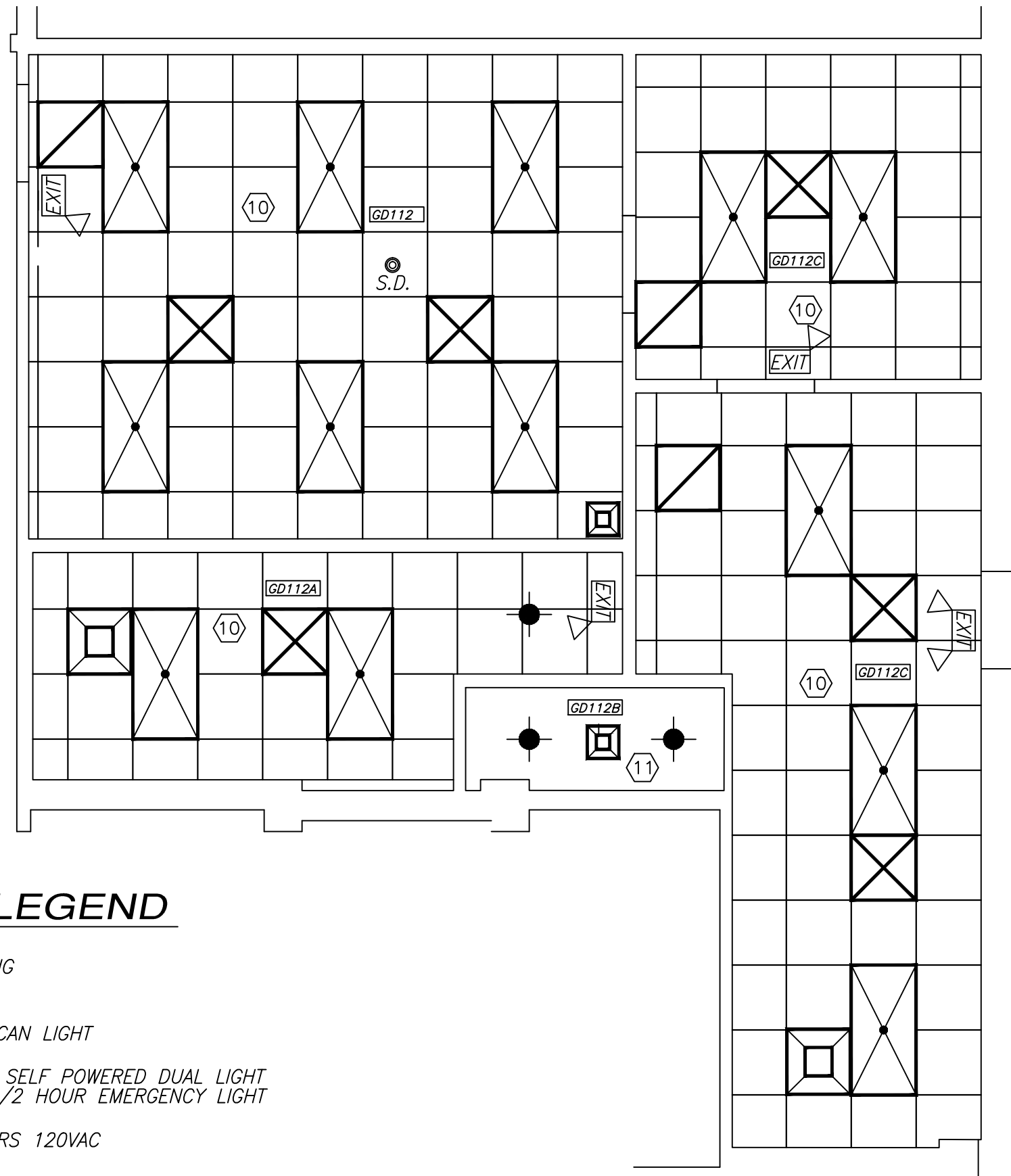


**GROUND FLOOR
NEW WORK PLAN**

SCALE: 1/4" = 1'-0"



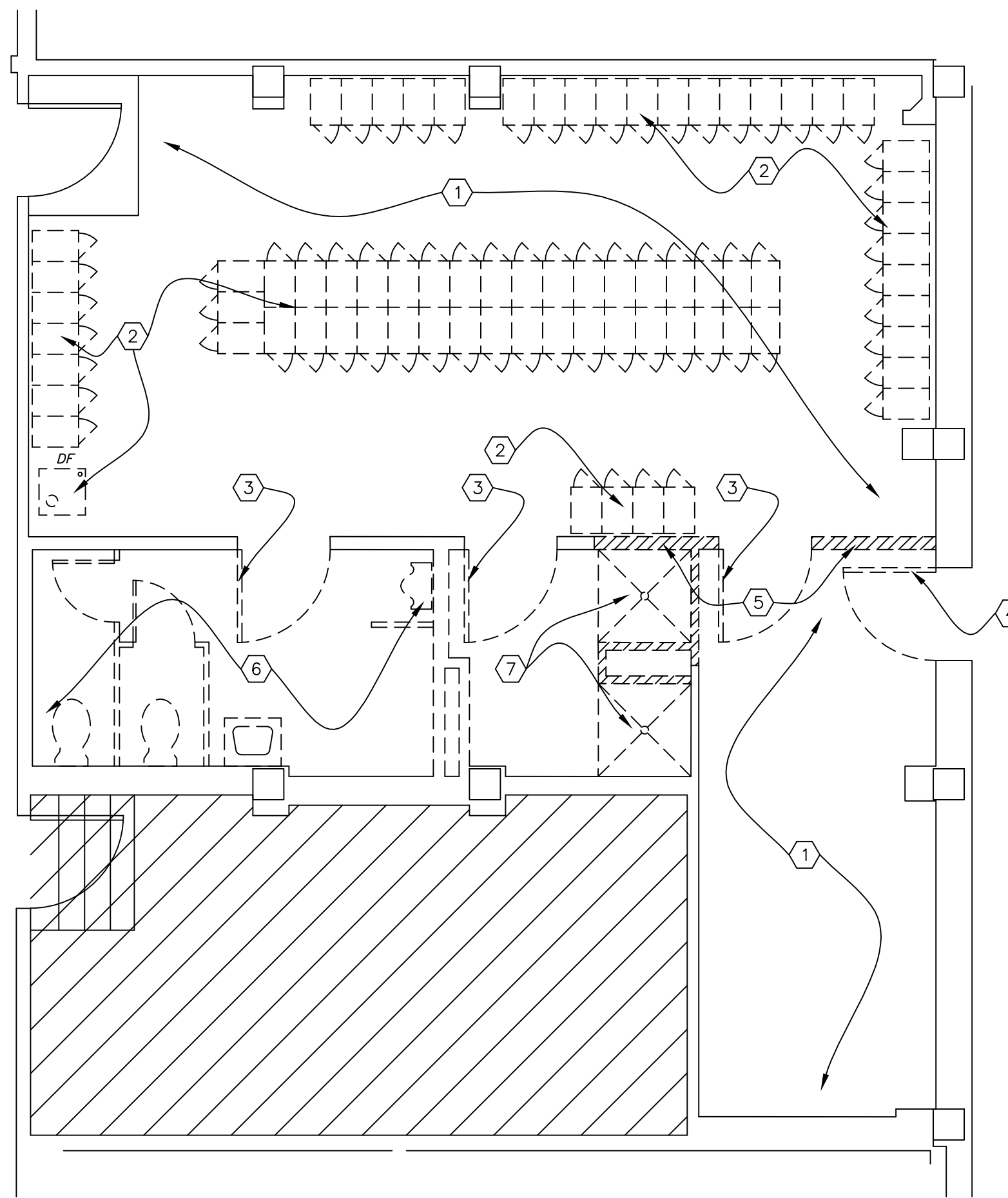
**GROUND FLOOR
CEILING PLAN**

SCALE: 1/4" = 1'-0"



CEILING PLAN LEGEND

- 2x4 LED LIGHTING (VA PROVIDED)
- LED RECESSED CAN LIGHT
- EXIT LIGHT W / SELF POWERED DUAL LIGHT W/ ATTACH 1-1/2 HOUR EMERGENCY LIGHT
- S.D. SMOKE DETECTORS 120VAC
- EXHAUST VENTS
- SUPPLY VENT
- RETURN VENT



**GROUND FLOOR
DEMOLITION PLAN**

SCALE: 1/4" = 1'-0"

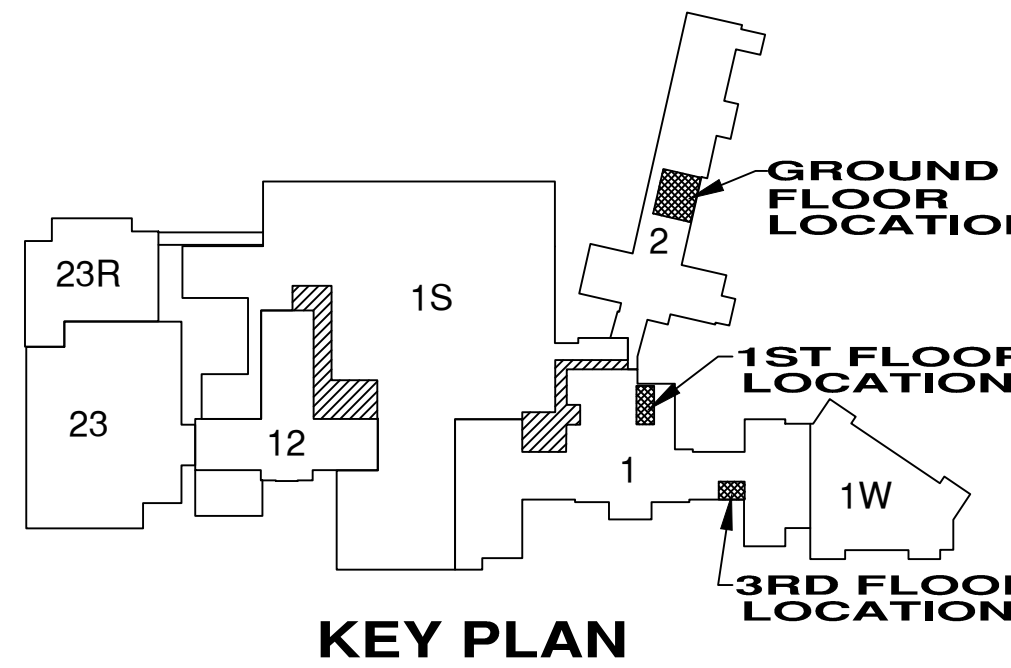


CONSTRUCTION NOTES

- 1 NEW DRYWALL PARTITION - 5/8" FIRE RESISTANT DRYWALL ON BOTH SIDES OF 4" 20 GAUGE METAL STUDS @ 16" O.C. EXTEND STUDS & DRYWALL TO UNDERSIDE OF DECK ABOVE. INSULATE WALLS FOR SOUND. INSTALL BLOCKING TO SUPPORT WALL HUNG CABINETS. PAINT ENTIRE WALL FROM CORNER TO CORNER BOTH SIDES. REFER TO ROOM FINISH SCHEDULE.
- 2 TOOTHING OF ALTERNATE MASONRY UNITS IN EXISTING OPENINGS REQUIRED. PRIME COAT AND PAINT FINISH. SEE ROOM FINISH SCHEDULE.
- 3 INSTALL NEW 3'-0"x 7'-0" HOLLOW METAL DOORS & 2" FRAMES. DOOR FRAMING STUDS SHALL BE DOUBLED AT EACH JAMB. INSTALL FLOOR ANCHOR CLIPS AS REQ. HARDWARE TO INCLUDE LEVER HANDLES, BUTTS, SILENCERS, CLOSERS & DOOR STOPS.
- 4 INSTALL NEW 3'-0"x 7'-0" INSULATED METAL DOOR & 2" FRAMES. DOOR JAMB FRAME SHALL BE CONCRETE FILLED. HARDWARE TO INCLUDE LEVER HANDLES, BUTTS, SILENCERS, CLOSER, SELF-ADHESIVE SEALS & DOOR STOP & NEW THRESHOLD. PAINT DOOR & FRAME PER MATERIAL & COLOR LEGEND FOR DOORS.
- 5 INSTALL NEW FREE STANDING 5 GALLON/HR WATER COOLER, OASIS MODEL P5CP OR APPROVED EQUAL. CONNECT TO EXISTING WATER SUPPLY, POWER AND DRAIN LINE. REFER TO PLUMBING FIXTURE SCHEDULE.
- 6 INSTALL NEW 2 TIER 12"x18"x76" METAL LOCKERS (16 GAUGE) WITH LEGS. EACH LOCKER SHALL INCLUDE NUMBER PLATE, 3 WALL HOOKS, DOUBLE CEILING HOOK, RECESSED HASP, SLOPING HOOD, FRONT BASE COVERS AND END BASE COVERS WHERE SIDES ARE EXPOSED, WALL ANCHOR BRACKETS SHALL BE INCLUDED TO SECURE TO WALL.
- 7 NEW DRYWALL CHASE PARTITION - 5/8" MOISTURE RESISTANT DRYWALL ON 4" 20 GAUGE METAL STUDS @ 16" O.C. TO 4" (MIN.) ABOVE HIGHEST ADJACENT FINISHED CEILING. INSTALL BLOCKING TO SUPPORT WALL HUNG FIXTURES. PAINT ENTIRE WALL FROM CORNER TO CORNER. REFER TO ROOM FINISH SCHEDULE.
- 8 NEW DRYWALL ENCLOSURE TO SQUARE OFF CORNER - 5/8" DRYWALL ON 2" 20 GAUGE METAL STUDS TO 4" (MIN.) ABOVE HIGHEST ADJACENT FINISHED CEILING. PAINT ENTIRE WALL FROM CORNER TO CORNER. REFER TO ROOM FINISH SCHEDULE.
- 9 DRILL 2" Ø HOLES & INSERT GROMMET RINGS AS SHOWN. 4 TOTAL.
- 10 NEW CEILING TILE, GRID, HVAC & LIGHTING. SEE FINISH SCHEDULE, MECHANICAL PLAN SHEET MP1 & LIGHTING PLAN SHEET E1.
- 11 NEW DRYWALL CEILING. SEE FINISH SCHEDULE, MECHANICAL PLAN SHEET MP1 & LIGHTING PLAN SHEET E1.
- 12 APPLY 1/2 MOISTURE RESISTANT DRYWALL ONTO ENTIRE C.M.U. WALLS WHERE IT EXIST. LOWER SECTION OF WALL TO RECEIVE CERAMIC TILE AND UPPER SECTION SHALL BE PAINTED. REFER TO ELEVATION D & F, SHEET A2 FOR TILE HEIGHT.
- 13 INSTALL NEW ROBE HOOK, MOUNT @ 64" A.F.F.
- 14 INSTALL NEW 18" WIDE TOWEL BAR, MOUNT @ 62" A.F.F.

DEMOLITION NOTES

- 1 ENTIRE ROOM TO RECEIVE NEW FINISHES. REMOVE EXISTING VCT FLOORING. REMOVE COVE BASE WHERE IT EXISTS. REMOVE EXISTING LIGHTING, SUSPENDED CEILING TILE & GRID. PATCH FLOORS & WALLS AS REQUIRED FOR NEW FINISH. REMOVE WALL HUNG ITEMS AND STORE APPROPRIATELY AS DIRECTED BY COR FOR RE-INSTALLATION. APPLY ARDEX SELF LEVELING CONCRETE UNDERLAMENT AS REQUIRED.
- 2 REMOVE EXISTING LOCKERS AND DRINKING FOUNTAIN.
- 3 REMOVE EXISTING DOORS & FRAMES. PATCH FLOORS & WALLS AS REQUIRED FOR NEW FINISH.
- 4 REMOVE EXISTING EXTERIOR DOOR & FRAME. NOTE: DOOR FRAME FILLED WITH CONCRETE. PATCH FLOORS & WALLS AS REQUIRED FOR NEW DOOR & FRAME.
- 5 REMOVE EXISTING MASONRY AND/OR STUD WALLS. PATCH FLOORS & WALLS AS REQUIRED FOR NEW FINISH.
- 6 REMOVE ALL PLUMBING FIXTURES, PARTITIONS. REMOVE EXISTING LIGHTING SUSPENDED CEILING TILE & GRID. REMOVE CERAMIC TILE ON WALLS & FLOORING. PATCH FLOORS & WALLS AS REQUIRED FOR NEW FINISH. PLUMBING CONTRACTOR TO REMOVE EXIST. PLUMBING FIXTURES AND CAP LINES AS REQUIRED. REFER TO PLUMBING DRAWING FOR DETAILS.
- 7 REMOVE SHOWER UNITS AND SUPPORTED FRAMING. REMOVE EXISTING LIGHTING SUSPENDED CEILING TILE & GRID. REMOVE CERAMIC TILE ON WALLS & FLOORING. PATCH FLOORS & WALLS AS REQUIRED FOR NEW FINISH. PLUMBING CONTRACTOR TO REMOVE EXIST. PLUMBING FIXTURES AND CAP LINES AS REQUIRED. REFER TO PLUMBING DRAWING SHEET M1 FOR DETAILS.



KEY PLAN



UNITED STATES DEPARTMENT OF VETERANS AFFAIRS
VA MEDICAL CENTER - 1540 SPRING VALLEY DRIVE - HUNTINGTON WV 25704

DRAWING TITLE:		PROJECT TITLE:		
GROUND FLOOR DEMOLITION & NEW WORK		LOCKER/BREAKROOM RENOVATION PROJECT		
APPROVED: CHRIS ECKLES ASS'T CHIEF, ENGINEERING	BUILDING: 2	PROJECT NUMBER: 14-109	DRAWING NUMBER: A1	
APPROVED: JOHN KLIM CHIEF, ENGINEERING	DRAWN: STEVE ELROD	DATE: JAN '14	DWG.	

REV. NO.	REVISION DESCRIPTION	DATE
1	PLUMBING FIXTURES RELOCATED IN ROOM GD112A, DOOR SIZE AND LOCATION CHANGED IN ROOM GD112B. REVISED NOTE 12, ADDED CONSTRUCTION NOTES 15. FOR ADDED LOCKERS, CONSTRUCTION 16 FOR ADDED LOCKER BENCH.	4-11-14