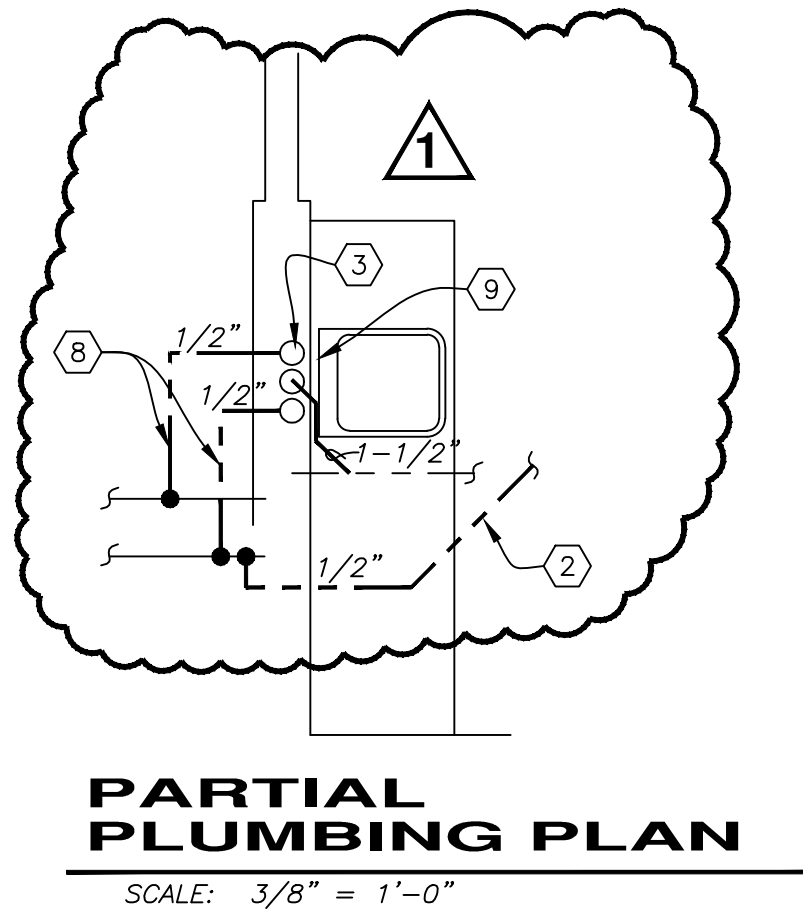
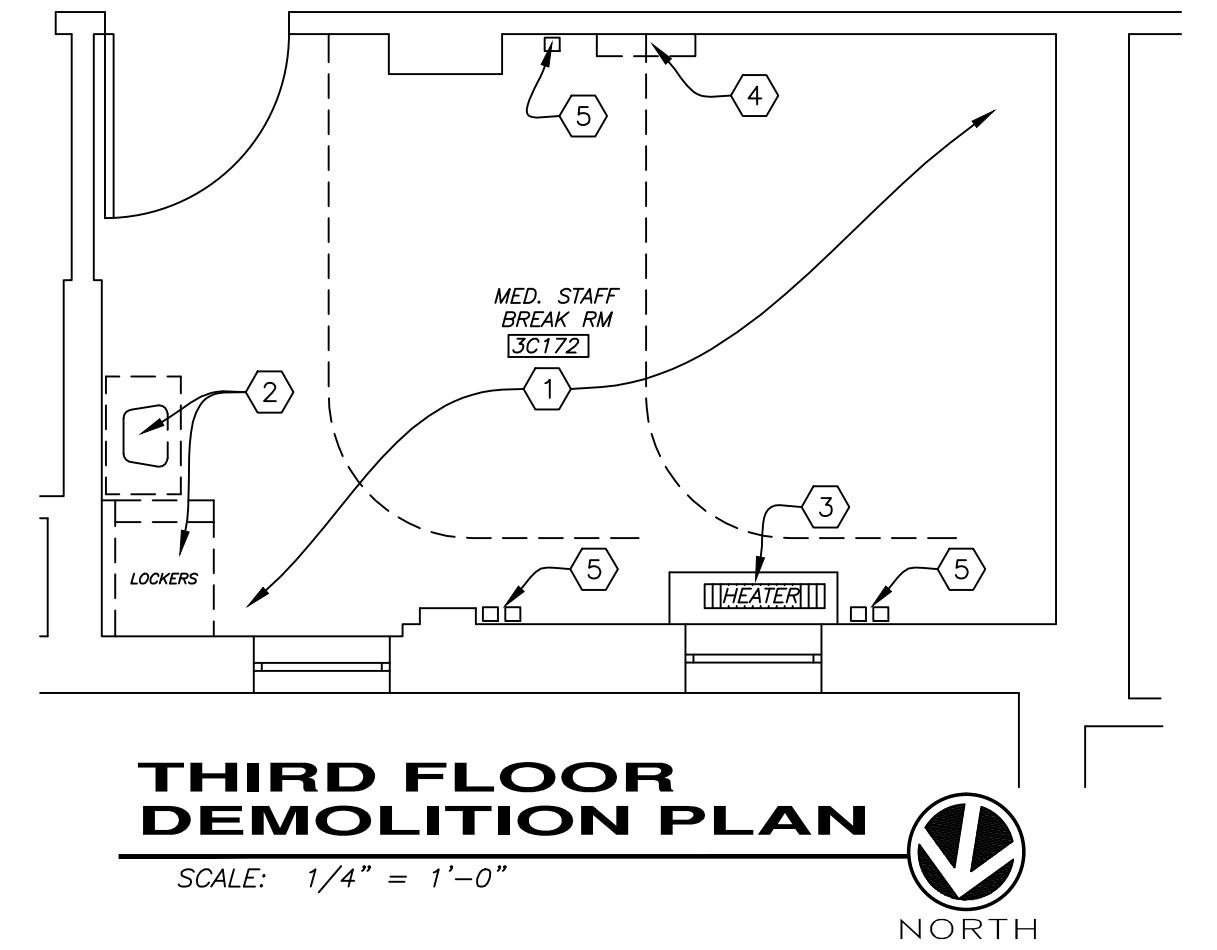
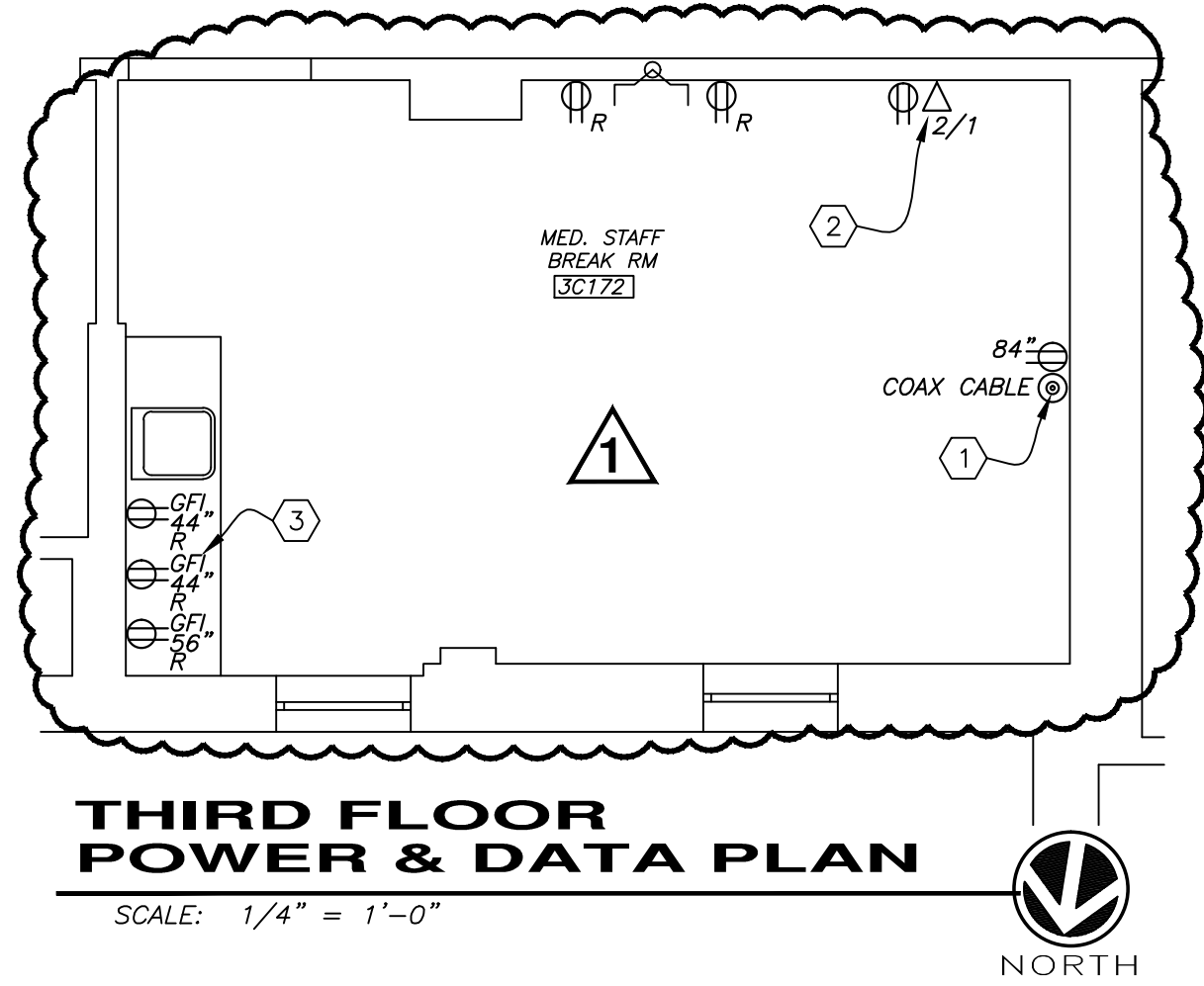
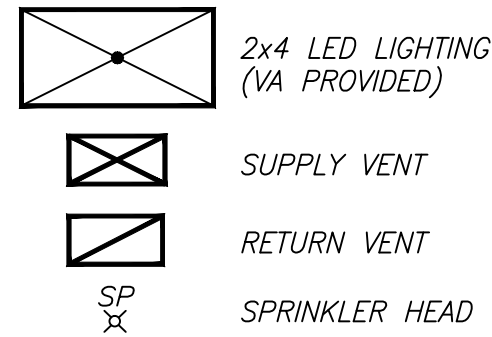


#### CEILING PLAN LEGEND



#### CONSTRUCTION NOTES

- FLOORS, WALLS & CEILING TO RECEIVE NEW FINISHES. SEE FINISH SCHEDULE.
- INSTALL WATER LINE CONNECTOR WITH INDIVIDUAL SHUTOFF VALVES FOR BUILT IN REFRIGERATOR ICE MACHINE UNITS.
- RE PLUMB NEW WASTE AND WATER PIPING TO NEW SINK FIXTURE. SEE PARTIAL PLUMBING PLAN THIS SHEET.
- NEW 2x2 CEILING TILE, GRID, HVAC DIFFUSER, GRILLS & LIGHTING. SEE FINISH SCHEDULE. RECESS CEILING TILE TO EXPOSE ENTIRE WINDOW OPENINGS.
- REPLACE EXISTING HVAC GRILLES WITH NEW. RECONNECT TO EXISTING DUCTWORK.
- INSTALL VA PROVIDED 2x4 LIGHT FIXTURES CONNECT TO NORMAL LIGHTING CIRCUIT.
- INSTALL NEW LIGHT SWITCH TO CONTROL 2x4 LIGHT FIXTURES.
- INSTALL NEW 1/2" COPPER SUPPLY PIPING TO NEW FIXTURES. ALL PIPING SHALL HAVE A MINIMUM 1/2" INSULATION. REFER TO MFG. CUT SHEETS FOR LOCATION TIE IN POINT AS NEEDED. WORK INCLUDES ALL CONNECTIONS AND MOUNTING SUPPORT HANGERS AS REQ. IN ACCORDANCE WITH LOCAL CODE.
- INSTALL NEW 1-1/2" SEWER PIPE FROM FIXTURES TO EXIST. SEWER PIPE. PROVIDE REDUCERS AS REQ. REFER TO MFG. CUT SHEETS FOR LOCATION TIE IN POINT. WORK INCLUDES REDUCER CONNECTIONS AND ALL MOUNTING SUPPORT HANGERS AS REQ. IN ACCORDANCE WITH LOCAL CODE. INSTALL & TIE NEW VENT PIPE TO NEAREST RISER.



#### ELECTRICAL NOTES

- INSTALL NEW COAX CABLE OUTLET IN WALL. REQUIRES ROUTING A NEW CABLE ABOVE CEILING TO CLOSEST CLOSET COORDINATE WORK WITH VA COR AND ELECTRICAL DEPT.
- INSTALL NEW DATA/COMM OUTLET. PER DATA NOTES REFERENCED ON SHEET E1.
- INSTALL NEW ELECTRIC OUTLETS PER ELECTRIC/DATA NOTES AND LEGEND REFERENCED ON SHEET E1. TYPICAL ALL NEW OUTLETS.

#### DEMOLITION NOTES

- ENTIRE ROOM TO RECEIVE NEW FINISHES. REMOVE EXISTING VCT FLOORING. REMOVE COVE BASE WHERE IT EXISTS. REMOVE EXISTING LIGHTING, SUSPENDED CEILING TILE & GRID. PATCH FLOORS & WALLS AS REQUIRED FOR NEW FINISH. REMOVE WALL HUNG ITEMS AND STORE APPROPRIATELY AS DIRECTED BY COR FOR RE-INSTALLATION. APPLY ARDEX SELF LEVELING CONCRETE UNDERLAMENT AS REQUIRED.
- REMOVE LOCKERS, PARTITION WALL, CASEWORK & PLUMBING FIXTURE. PATCH FLOORS & WALLS AS REQUIRED FOR NEW FINISH. PLUMBING CONTRACTOR TO REMOVE EXIST. PLUMBING FIXTURES AND PREPARE TO RECEIVE NEW FIXTURE AS SHOWN.
- REMOVE HEATING COIL UNIT COMPONENTS AS NEEDED TO CLEAN THOROUGHLY & REFURBISH UNIT FOR RE-USE. EXTERIOR FINISH SURFACE SHALL BE CLEANED SANDED, PATCHED AS REQUIRED AND PAINTED WITH EPOXY BASE PAINT.
- REMOVE PATIENT HEADWALL UNIT. OXYGEN, MEDICAL AIR & VACUUM LINES SHALL BE DISCONNECTED, CAPPED & CERTIFIED COMPLIANT BY REGISTERED MEDICAL GAS TECHNICIAN. DISCONNECT NURSE CALL, COMM LINES AND ELECTRIC BACK TO NEAREST JUNCTION BOX.
- DISCONNECT & REMOVE ALL SURFACE & POLE MOUNTED OUTLETS, COM DEVICES AND ASSOCIATED EXPOSED CONDUITS. EXISTING TV OUTLETS SHALL BE REMOVED, AND HOLES PATCHED OVER TO RECEIVE PAINT.

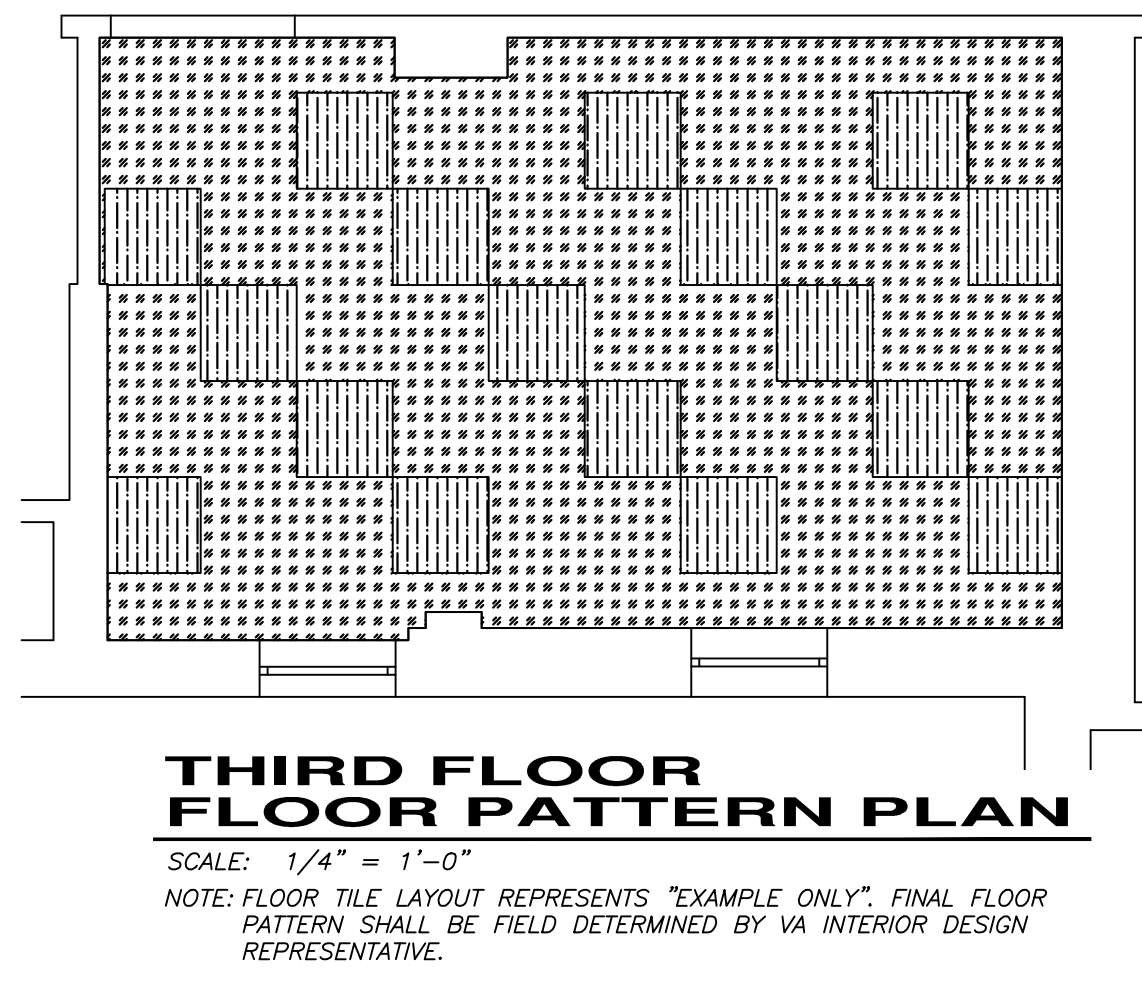
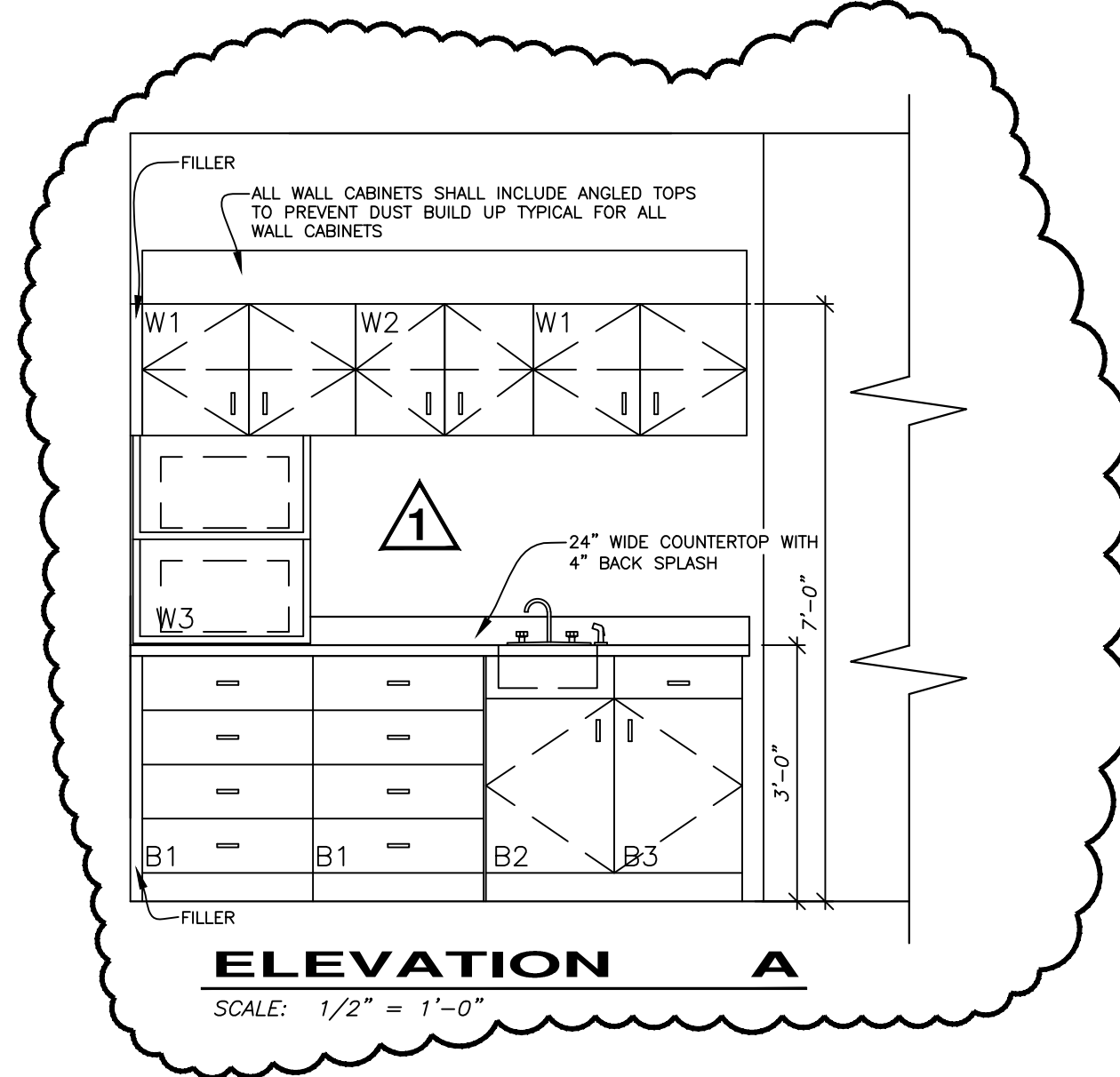
PLUMBING FIXTURE SCHEDULE							
P#	DESCRIPTION	CW	HW	SAN	VENT	TRAP	NOTES
P-105	COUNTERTOP S/S SINK	1/2"	1/2"	1-1/2"	1-1/2"	P	SEE NOTES 1, 2, 3
ADDITIONAL NOTES:							
1. PLUMBING TIE INS OF NEW FIXTURES WILL REQUIRE MODIFYING SUPPLY AND DRAIN LINES, CORING NEW HOLES THRU WALLS AND FLOORS, ETC. AND SHALL BE INCLUDED AS PART THE INSTALLATION.							
2. INCLUDES SINGLE BOWL STAINLESS STEEL SINK, GOOSENECK SPOUT FAUCET & PULL OUT SPRAY HEAD.							
3. FIXTURE SHALL BE RATED TO DISPENSE WATER AT A RATE OF 2.5 GALLON PER MINUTE (GPM).							

ROOM FINISH SCHEDULE						
RM.NO.	ROOM NAME	FLOOR FINISH	BASE	WALLS	CEILING	NOTES
3C172	LOUNGE	RES-1,2	RB	P1,2	ACT	SEE NOTES 1, 2, 3, 4, 5.
MATERIAL FINISH LEGEND						
ACOUSTIC CEILING TILE (ACT)		RUBBER BASE (RB)				
RESILANT FLOORING (RES)		PAINT (P)				
FINISH NOTES:						
1. ACOUSTIC CEILING TILE (ACT) SHALL BE 2x2 LAY IN TYPE, WASHABLE, MOLD, BACTERIA & MILDEW RESISTANT. INSTALL NEW GRID.						
2. PAINT (P) 1 COAT SHERWIN WILLIAMS MULTI-PURPOSE LATEX PRIMER, 2 COATS SHERWIN WILLIAMS SEMI GLOSS LATEX FINISH. COLOR REFER TO MATERIAL & COLOR LEGEND.						
3. RUBBER BASE (RB) SHALL BE 5-1/4" HIGH WITH CONTOUR, COLOR – MANNINGTON 918 FLAX.						
4. RESILANT FLOORING (RES) TWO COLOR PATTERN T.B.D. REFER TO FLOOR PATTERN LAYOUT AND MATERIAL & COLOR LEGEND SHEET A2.						
5. ONE ACCENT WALL SHALL BE PAINTED  THIS ROOM. ENTIRE DOOR & FRAME SHALL BE PAINTED  REFER TO MATERIAL & COLOR LEGEND SHEET A2.						

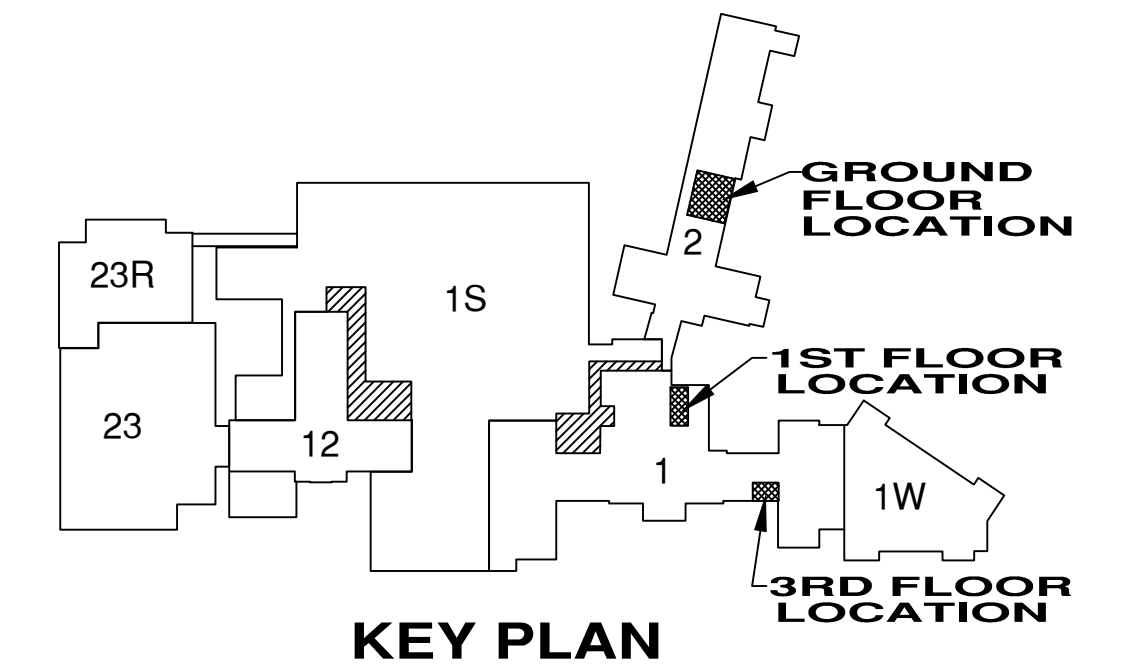
CASEWORK SCHEDULE							
CASEWORK NUMBER	MANUFACTURER'S SERIES	S I Z E			CASEWORK TYPE	ADJ. SHELF	DOORS
		W"	H"	D"			
B1	1	24"	36"	23"	DRAWERS	-	-
B2		18"	36"	23"	SINK CABINET	1	1
B3		18"	36"	23"	DOOR/DRAWER	-	1
B4		24"	36"	23"	DOOR/DRAWER	-	1
W1		30"	18"	16"	HINGED DOORS	1	2
W2		18"	18"	16"	HINGED DOORS	1	2
W3		24"	32"	16"	DUAL MICRO WAVE	-	-

#### CASEWORK NOTES

GENERAL CONTRACTOR TO VERIFY SIZE OF COUNTERTOPS. ALL CABINET JOINTS ARE TO BE FLUSH WITHOUT OVERLAPS. FIXTURES AND CONNECTIONS BY PLUMBING CONTRACTOR. COUNTER TOPS SHALL HAVE 4" H BACK SPLASH, FIELD JOINT & MARINE EDGED. COUNTER TOPS & BACKSPLASH SHALL BE SOLID SURFACE CORIAN. PROVIDE REAR, FRONT & CORNER FILLERS (SIZE VARIES) AS REQUIRED. ALL CASEWORK IS TO HAVE SOLID BACKS. ALL DIMENSIONS SHOWN ON CASEWORK SCHEDULE ARE NOMINAL DIMENSIONS.



NOTE: FLOOR TILE LAYOUT REPRESENTS "EXAMPLE ONLY". FINAL FLOOR PATTERN SHALL BE FIELD DETERMINED BY VA INTERIOR DESIGN REPRESENTATIVE.



REV. NO.	REVISION DESCRIPTION	DATE
1	CHANGE CASEWORK SCHEDULE, ELEVATION A CHANGED, ELEVATION B & COUNTERTOP REMOVED. ADDED POWER & PLUMBING CHANGES. REVISED CONSTRUCTION NOTES.	4-11-14



**UNITED STATES DEPARTMENT OF VETERANS AFFAIRS**  
VA MEDICAL CENTER - 1540 SPRING VALLEY DRIVE - HUNTINGTON WV 25704

DRAWING TITLE:		PROJECT TITLE:		
<b>PLANS, ELEVATIONS SCHEDULES &amp; DETAILS</b>		<b>LOCKER/BREAKROOM RENOVATION PROJECT</b>		
APPROVED: CHRIS ECKLES ASS'T CHIEF, ENGINEERING	BUILDING: 1	PROJECT NUMBER: 14-109	DRAWING NUMBER: A4	
APPROVED: JOHN KLIM CHIEF, ENGINEERING	DRAWN: STEVE ELROD	DATE: JAN '14	DWG.	