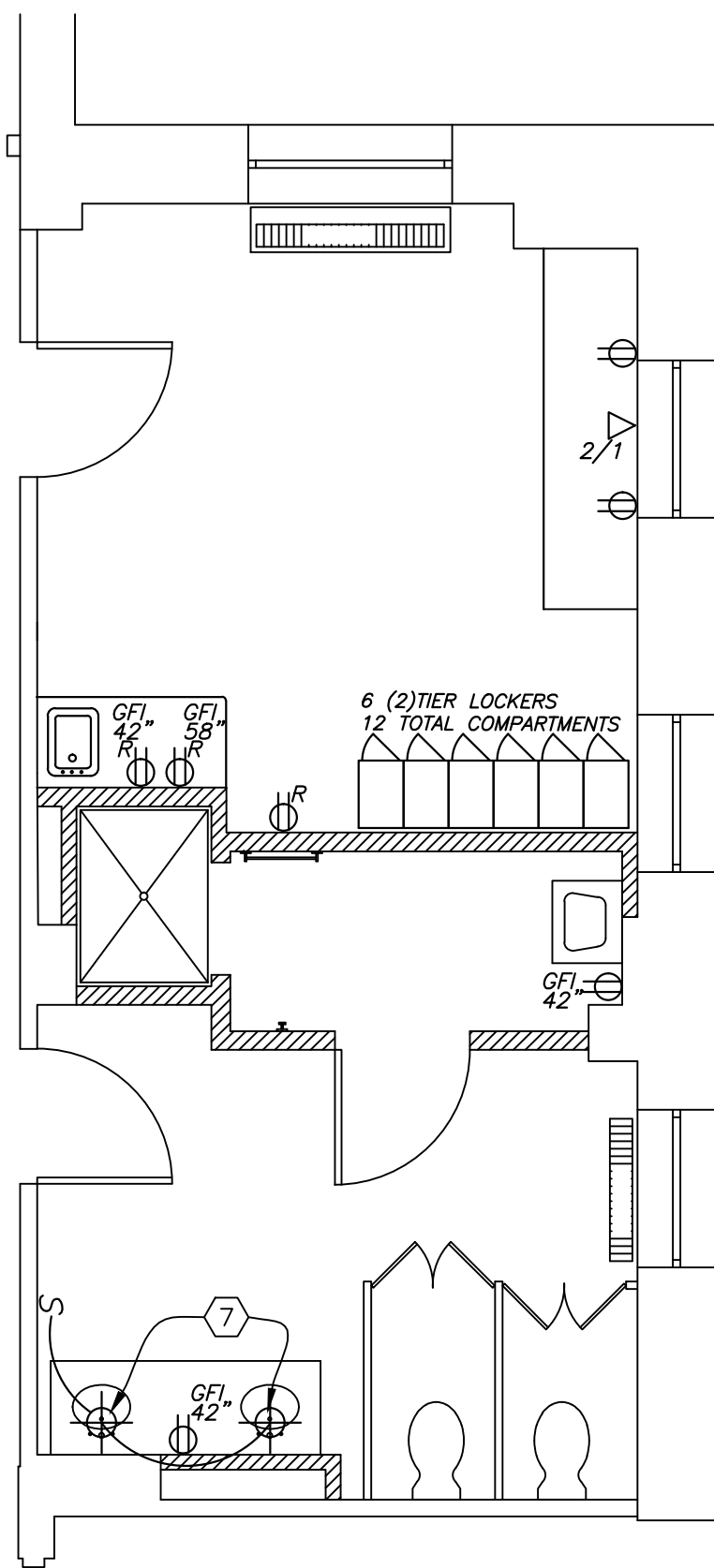


GROUND FLOOR
POWER & DATA PLAN

SCALE: 1/4" = 1'-0"



FIRST FLOOR
POWER & DATA PLAN

SCALE: 1/4" = 1'-0"

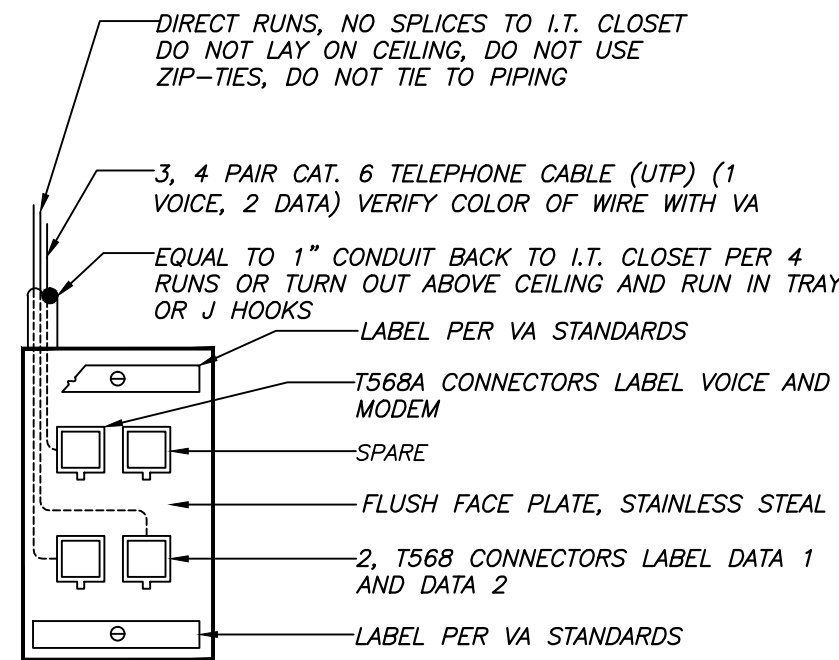


ELECTRIC/DATA LEGEND

- QUADRAPLEX RECEPTACLE
- DUPLEX RECEPTACLE
- DUPLEX MOUNTING HEIGHT
- GROUND FAULT INTERRUPT RECEPTACLE
- DATA/COM (2 DATA, 1 COM)
- COAX CABLE CONNECTION MOUNTED @ 84"
- 3 WAY SWITCH
- DENOTES BOX SHALL BE WATER PROOF SURFACE MOUNTED TO EXISTING MASONRY WALLS, CONDUIT SHALL BE 3/4" EMT.
- DENOTES A DEDICATED CIRCUIT FOR REFRIGERATOR AND/OR MICROWAVE OVEN.

GENERAL ELECTRICAL / DATA NOTES:

- ALL RECEPTACLES MOUNTED BACK OF COUNTERTOP SPACES WILL BE MOUNTED ABOVE COUNTERTOP FOR USE WHERE NOTED 42". RECEPTACLE FACE PLATE COVERS SHALL BE STAINLESS STEEL. EMERGENCY POWER RECEPTACLES SHALL BE STAMPED RED.
- ALL ELECTRIC FIXTURES SHALL BE HOSPITAL GRADE MATERIALS. ALL COVER PLATES SHALL BE STAINLESS STEEL.
- CONTRACTOR SHALL SUBMIT SHOP DRAWINGS FOR ALL EQUIPMENT BEFORE INSTALLATION.
- OUTLET BOXES SHALL BE STEEL, 4" SQUARE 1-1/2" DEEP, W/ 1/2" DEVISE RING WHERE RECESSED. SURFACE MOUNTED BOXES SHALL BE STEEL AND WATERPROOF PER NEC CODES.
- WIRING SHALL BE COPPER WITH TYPE THIN INSULATION, MINIMUM SIZE #12 AWG, ALL CONDUIT IS 3/4". CONTRACTOR SHALL COORDINATE ROUTING OF WIRING WITH COR PRIOR TO INSTALLATION.
- ALL CIRCUITS SHALL HAVE A GROUNDING CONDUCTOR INSTALLED IN THE RACEWAY WITH THE PHASE AND NEUTRAL CONDUCTORS, FOR EACH WIRING DEVICE A GROUNDING PIGTAIL JUMPER SHALL BE INSTALLED, TO CONNECT THE DEVICE TO THE BOX. EACH RECEPTACLE COVER PLATE SHALL HAVE A LABELED PANEL CIRCUIT # IDENTIFIER.
- ALL NEW VOICE AND DATA CABLING SHALL COORDINATE ROUTING WITH COR. NEW CABLES SHALL BE RE-INSTALLED IN 'D' RINGS ABOVE CORRIDOR CEILINGS. PROVIDE 1 NEW CAT 6 48 PORT PATCH PANEL IN EXISTING RACK. NEW PANELS SHALL MATCH EXISTING ORTRONICS PATCH PANELS.
- ALL SERVICE MOUNTED ELECTRIC DEVICES OR DATA BOXES AND ASSOCIATED CONDUITS SHALL BE PAINTED STEEL TO MATCH WALL PAINT WHEN EXTERNALLY MOUNTED TO CMU.
- COAX CABLE SHALL BE RUN ABOVE CEILING TILES TO AN EXISTING SPLICE BOX. PLACE CABLE INTO EXISTING CABLE TRAY OR J-HOOKS ABOVE CEILING. INSTALL CABLE HOOK WHERE NON-EXISTANT.

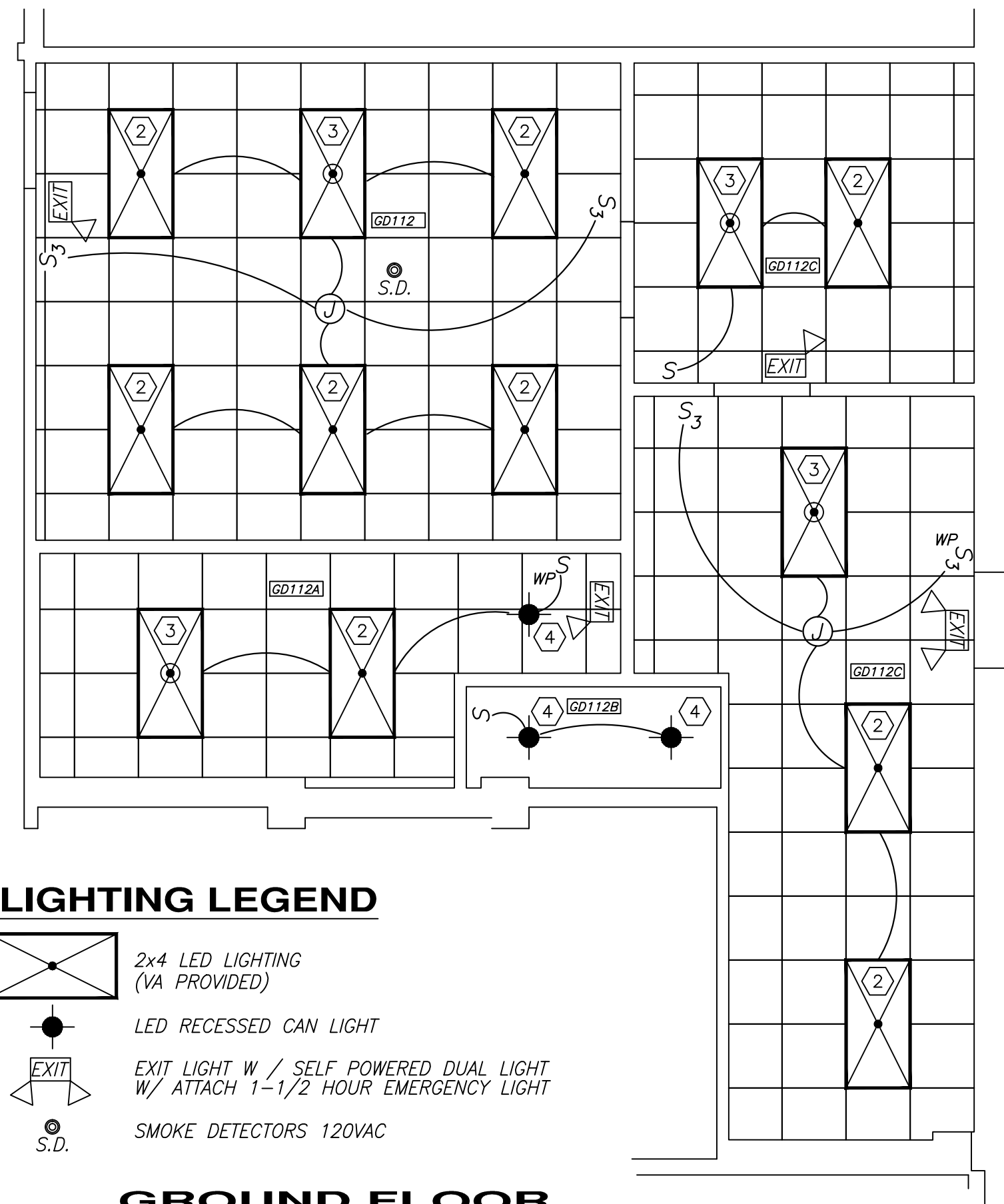


DATA OUTLET BY ORTRONICS WITH WHITE FLUSH PLATE, NO EXCEPTION
PROVIDE FIRE RATED SLEEVES IN EXISTING PARTITIONS AT IT CLOSET AND CORRIDOR
TERMINATE AND TEST ALL WIRING. LABEL PER VA STANDARD REPLACE AND REWIRE AS REQUIRED ON FAILED TESTING PROVIDE FINAL BOUND REPORT IN CD OR HARD COPY TO VA

DATA OUTLET DETAIL
3 JACK, MINIMUM FOR ALL LOCATIONS

ELECTRICAL & LIGHTING NOTES

- RELOCATE AND INSTALL NEW LIGHT SWITCHES AT LOCATIONS NOTED ON PLAN. SURFACE MOUNTED SWITCHES SHALL BE WATERPROOF STEEL WHERE MOUNTED TO MASONRY.
- INSTALL VA PROVIDED 2x4 LIGHT FIXTURES CONNECT TO NORMAL LIGHTING CIRCUIT.
- INSTALL VA PROVIDED 2x4 LIGHT FIXTURES. CONNECT TO EXISTING EMERGENCY LIGHTING CIRCUIT.
- INSTALL NEW COMPACT FLUORESCENT DOWNLIGHTS. LITHONIA LP6F 18DTT MVOLT 6L4 WITH A WHITE SPLAY FRESNEL LENS COVER. LAMP SHALL BE DOUBLE TWIN 18 WATT 120V.
- VERIFY ALL NEW RECEPTACLE & LIGHTING CIRCUIT CONNECTIONS TIED TO EXISTING CIRCUIT PANELS ARE INSTALLED PER NEC REQUIREMENTS. COORDINATE POWER OUTAGES WITH 24HR NOTICE.
- COAX CABLE REQUIRES ROUTING A NEW CABLE ABOVE CEILING TO CLOSEST CLOSET LOCATED IN GB172 NEAR SERVICE ELEVATORS. ESTIMATED @ 172 FEET FROM THIS LOCATION. COORDINATE WORK WITH VA COR AND ELECTRICAL DEPT.
- INSTALL 2 NEW WALL MOUNTED LIGHT FIXTURES. TYPE KICHLER 45119 CALLEIGH 3 DOWN LIGHT BATHROOM FIXTURE BRUSH NICKEL FINISH.
- REPLACE EXISTING EXHAUST FAN AND LOUVER UNIT.

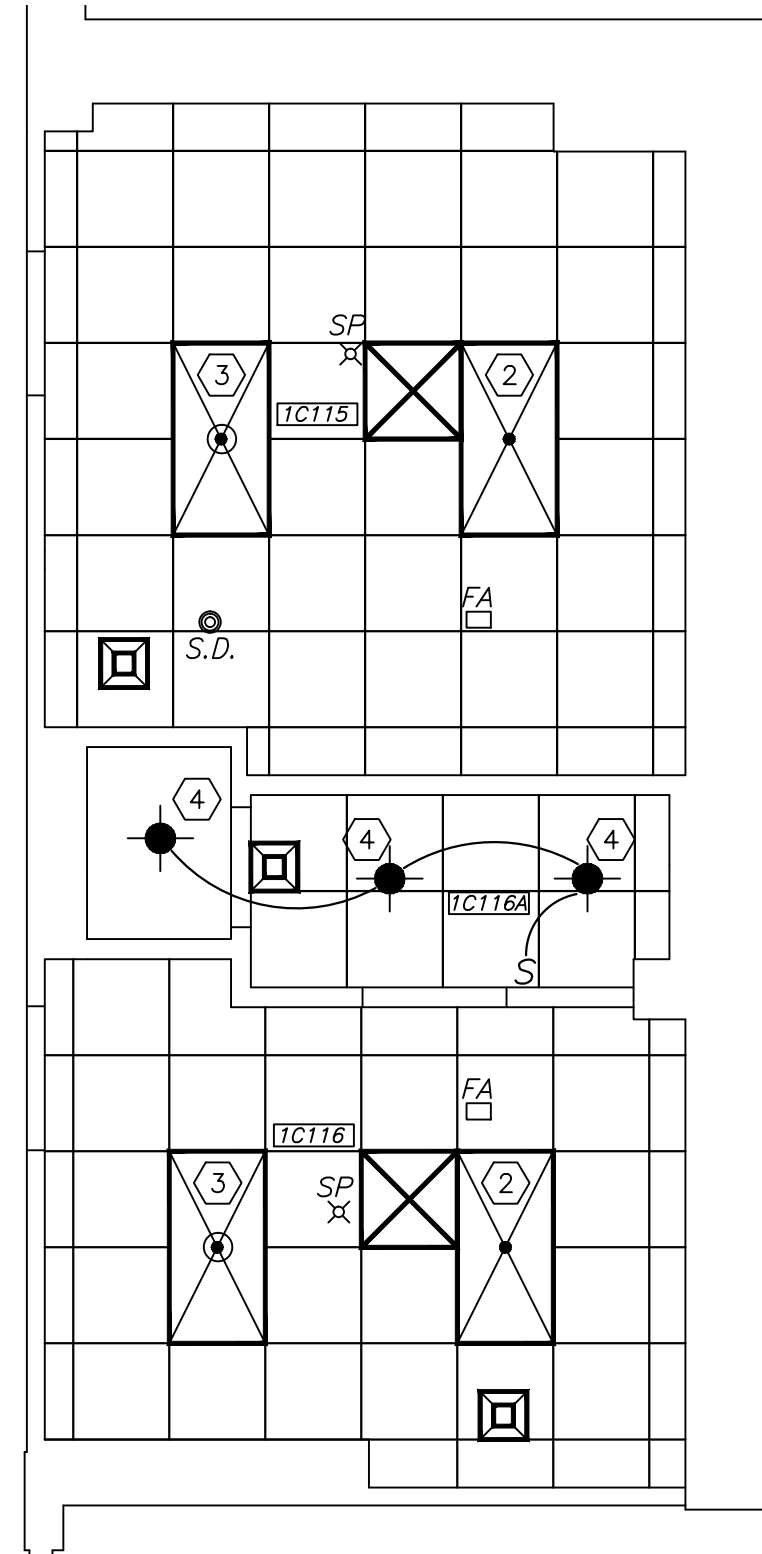


LIGHTING LEGEND

- 2x4 LED LIGHTING (VA PROVIDED)
- LED RECESSED CAN LIGHT
- EXIT LIGHT W / SELF POWERED DUAL LIGHT W/ ATTACH 1-1/2 HOUR EMERGENCY LIGHT
- SMOKE DETECTORS 120VAC

GROUND FLOOR
LIGHTING PLAN

SCALE: 1/4" = 1'-0"



FIRST FLOOR
LIGHTING PLAN

SCALE: 1/4" = 1'-0"



UNITED STATES DEPARTMENT OF VETERANS AFFAIRS
VA MEDICAL CENTER - 1540 SPRING VALLEY DRIVE - HUNTINGTON WV 25704

DRAWING TITLE:		PROJECT TITLE:			
POWER DATA & LIGHTING PLAN		LOCKER/BREAKROOM RENOVATION PROJECT			
APPROVED: CHRIS ECKLES ASS'T CHIEF, ENGINEERING	BUILDING: 1 & 2	PROJECT NUMBER: 14-109	DRAWING NUMBER: E1		
APPROVED: JOHN KLIM CHIEF, ENGINEERING	DRAWN: STEVE ELROD	DATE: JAN '14	DWG.		

REV. NO.	REVISION DESCRIPTION	DATE
1	RELOCATED GFI OUTLET FROM NORTHWALL TO SOUTHWALL	4-11-14