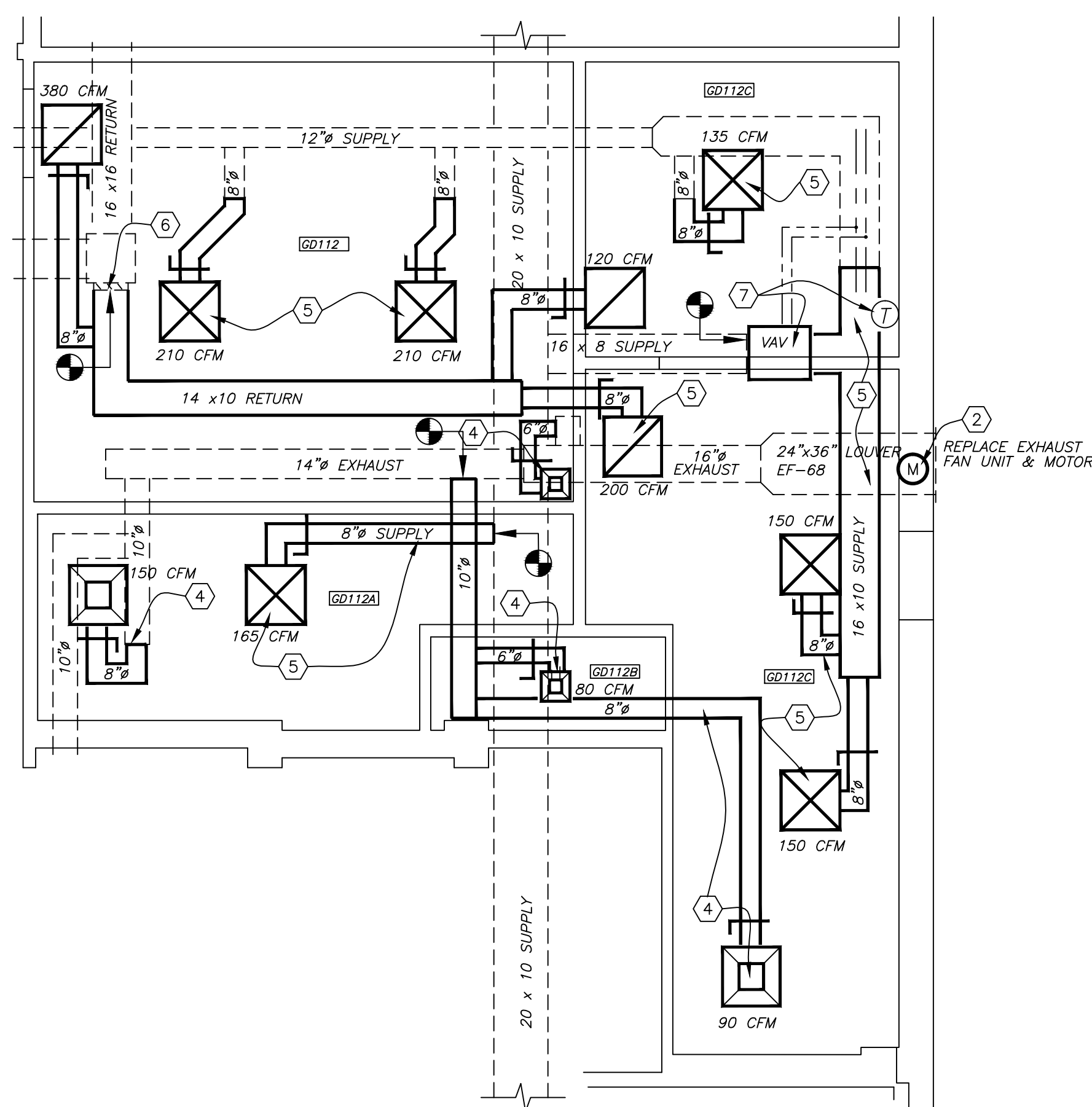


GROUND FLOOR MECH. DEMOLITION PLAN

SCALE: 1/4" = 1'-0"



GROUND FLOOR MECH. NEW WORK PLAN

SCALE: 1/4" = 1'-0"



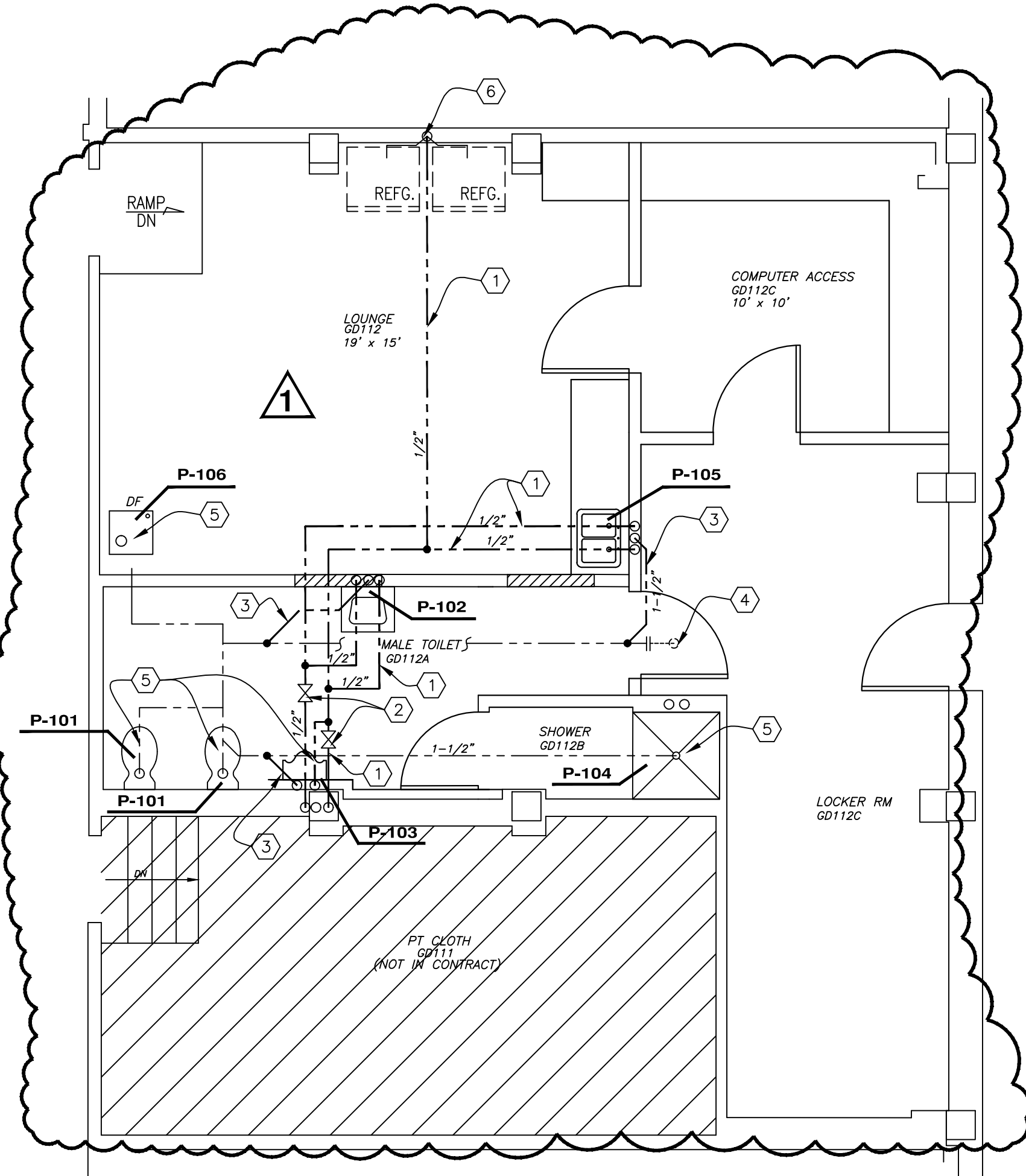
FIRST FLOOR MECH. DEMOLITION PLAN

SCALE: 1/4" = 1'-0"



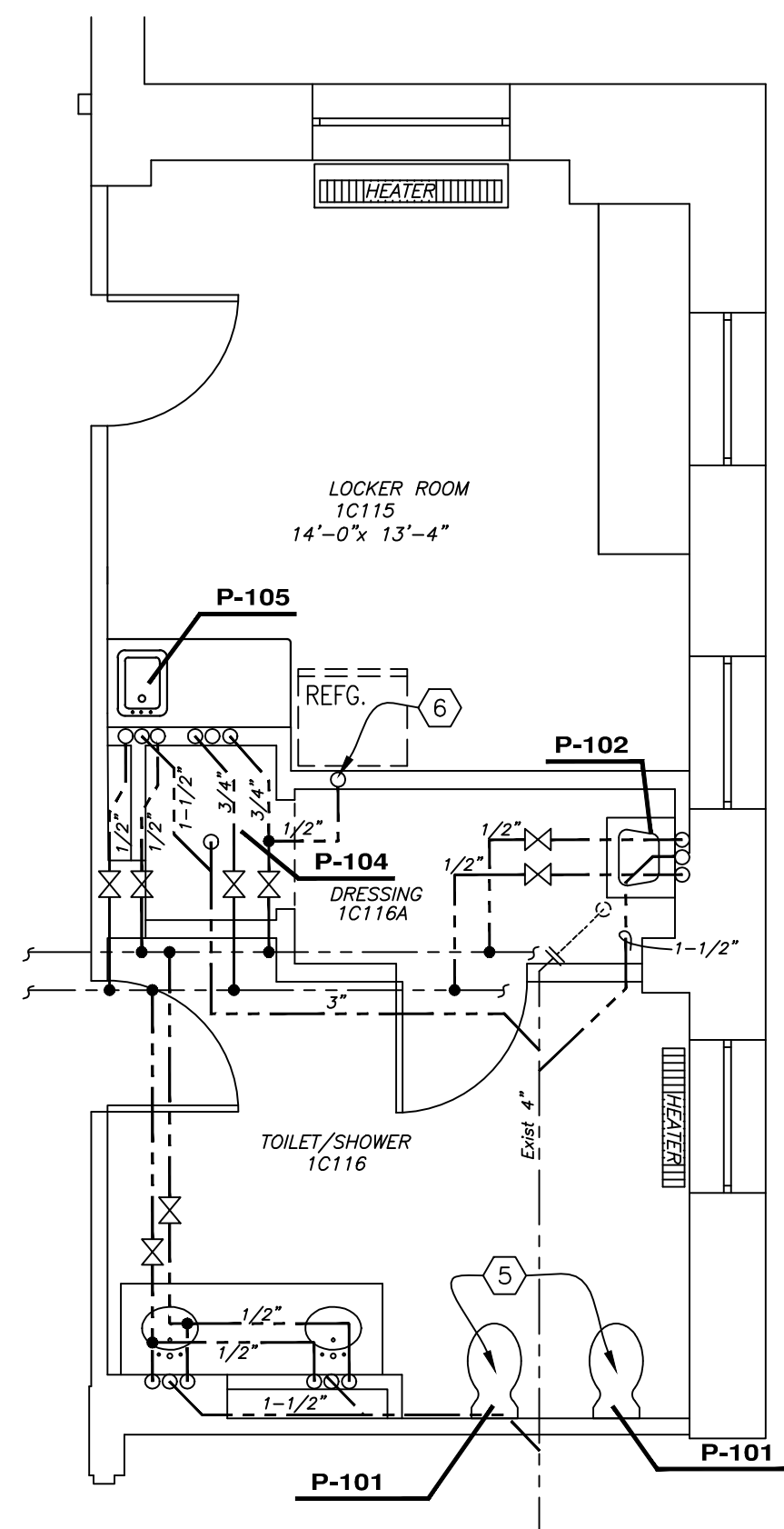
FIRST FLOOR MECH. NEW WORK PLAN

SCALE: 1/4" = 1'-0"



GROUND FLOOR PLUMBING PLAN

SCALE: 1/4" = 1'-0"



FIRST FLOOR PLUMBING PLAN

SCALE: 1/4" = 1'-0"



PLUMBING FIXTURE SCHEDULE

P#	DESCRIPTION	CW	HW	SAN	VENT	TRAP	NOTES
P-101	WATER CLOSET	EX.	-	EX.	EX.	INT	SEE NOTES 1, 2, 8
P-102	WALL HUNG LAVATORY	EX.	EX.	EX.	EX.	P	SEE NOTES 1, 3, 9
P-103	WALL HUNG URINAL	3/4"	-	3"	1-1/2"	INT	SEE NOTES 1, 3, 10
P-104	SHOWER	EX.	EX.	EX.	EX.	EX.	SEE NOTES 1, 4, 9
P-105	COUNTERTOP S/S SINK	1/2"	1/2"	1-1/2"	1-1/2"	P	SEE NOTES 1, 5, 9
P-106	DRINKING FOUNTAIN	EX.	-	EX.	EX.	EX.	SEE NOTES 1, 6
P-107	COUNTERTOP S/S SINK	1/2"	1/2"	1-1/2"	1-1/2"	P	SEE NOTES 1, 7, 9

ADDITIONAL NOTES:

- PLUMBING TIE INS OF NEW FIXTURES WILL REQUIRE MODIFYING SUPPLY AND DRAIN LINES. CORING NEW HOLES THRU WALLS AND FLOORS, ETC. AND SHALL BE INCLUDED AS PART THE INSTALLATION.
- FLOOR MOUNTED WATER CLOSETS SHALL INCLUDE BATTERY POWERED ELECTRONIC MOTION SENSOR DEVISE TO OPERATE FIXTURE.
- MOUNTING HEIGHTS OF NEW FIXTURES SHALL BE IN ACCORDANCE TO ELEVATIONS. FIXTURES SHALL INCLUDE BATTERY POWERED ELECTRONIC MOTION SENSOR DEVISE TO OPERATE FIXTURES.
- CONSTRUCT NEW CERAMIC TILE SHOWER STALL. WORK INCLUDES SLOPING FLOOR WITH CONCRETE TO NEW DRAIN, WATER DAM, CERAMIC TILED FLOORS & WALLS, SHOWER CURTAIN, CURTAIN ROD, WALL MOUNTED SOAP DISH, GRAB BAR, CLOTHING ROBE HOOK. ALL ITEM FIXTURES TO BE STAINLESS STEEL. SEE ELEVATION AND SECTION DETAIL AA.
- INCLUDES DOUBLE BOWL STAINLESS STEEL SINK, GOOSENECK SPOUT FAUCET, PULL OUT SPRAY HEAD AND UNDERCOUNTER GARBAGE DISPOSAL.
- DRINKING FOUNTAIN / WATER COOLER SHALL FLOOR MOUNTED, INCLUDES REFRIGERATION SYSTEM, DRYER, SPLASH RESISTANT STAINLESS STEEL.
- INCLUDES SINGLE BOWL STAINLESS STEEL SINK, GOOSENECK SPOUT FAUCET & PULL OUT SPRAY HEAD.
- FIXTURE SHALL USE WATER AT RATE OF 1.1 GALLON PER FLUSH (GPF) OR LESS.
- FIXTURE SHALL BE RATED TO DISPENSE WATER AT A RATE OF 2.5 GALLON PER MINUTE (GPM).
- FIXTURE SHALL USE WATER AT RATE OF 0.5 GALLON PER FLUSH (GPF) OR LESS.

PLUMBING NOTES

- INSTALL NEW 1/2" COPPER SUPPLY PIPING TO NEW FIXTURES. ALL PIPING SHALL HAVE A MINIMUM 1/2" INSULATION. REFER TO MFG. CUT SHEETS FOR LOCATION TIE IN POINT AS NEEDED. WORK INCLUDES ALL CONNECTIONS AND MOUNTING SUPPORT HANGERS AS REQ. IN ACCORDANCE WITH LOCAL CODE.
- INSTALL 1/2" NEW BALL VALVES TO NEW FIXTURES.
- INSTALL NEW 1-1/2" SEWER PIPE FROM FIXTURES TO EXIST. SEWER PIPE. PROVIDE REDUCERS AS REQ. REFER TO MFG. CUT SHEETS FOR LOCATION TIE IN POINT. WORK INCLUDES REDUCER CONNECTIONS AND ALL MOUNTING SUPPORT HANGERS AS REQ. IN ACCORDANCE WITH LOCAL CODE. INSTALL & TIE NEW VENT PIPE TO NEAREST RISER.
- REMOVE EXIST. PIPING CONNECTIONS FROM REMOVED SHOWER. CAP OFF ALL SUPPLY LINES AND DRAINS. CONCRETE FILL THROUGH FLOOR OPENING. PREPARE SURFACES FLUSH FOR NEW FOR NEW FINISHES.
- RE-USE EXISTING WATER LINE AND DRAINS TO CONNECT NEW FIXTURES & SHOWER.
- INSTALL WATER LINE CONNECTORS WITH INDIVIDUAL SHUTOFFS FOR BUILT IN REFRIGERATOR ICE MACHINE UNITS.

MECHANICAL NOTES

- REMOVE ALL (HATCHED) HVAC & EXHAUST DUCT WORK, MATERIALS, GRILLS LOUVERS & SUPPORT HANGERS. CAP & SEAL ALL OPENINGS.
- REPLACE EXISTING EXHAUST FAN AND LOUVER UNIT.
- REMOVE VAV UNIT AND SUPPORT HANGERS. CAP & SEAL ALL OPENINGS AND STEAM LINE CONNECTIONS. TURN OVER CONTROL UNIT FROM VAV TO COR FOR FUTURE USE.
- INSTALL NEW METAL EXHAUST DUCTS AND GRILLS AS SHOWN ON PLANS. PROVIDE ALL MOUNTING SUPPORT HANGERS AS REQ. IN ACCORDANCE WITH LOCAL CODES. INSTALL MANUAL CONTROL DAMPERS IN ALL DUCTWORK TO ADJUST/CONTROL AMOUNT OF EXHAUST AIR. PROVIDE SUBMITTALS FOR DAMPER. RE-BALANCE AIR FLOW PER TAB
- INSTALL NEW METAL HVAC INSULATED FOIL CRAFT EXTERIOR DUCTWORK PER SMACNA AND GRILLS AS SHOWN ON PLANS. PROVIDE ALL MOUNTING SUPPORT HANGERS AS REQ. IN ACCORDANCE WITH LOCAL CODES. INSTALL MANUAL CONTROL DAMPERS (TURNING VANES AT 90 DEG.) IN ALL DUCTWORK TO ADJUST/CONTROL AMOUNT OF EXHAUST AIR. PROVIDE SUBMITTALS FOR DAMPER. RE-BALANCE AIR FLOW PER TAB.
- REMOVE EXISTING LOUVER DEVICE FROM RETURN AIR DUCT AND INSTALL NEW METAL HVAC DUCTWORK AND GRILLS AS SHOWN ON PLANS. PROVIDE ALL MOUNTING SUPPORT HANGERS AS REQ. IN ACCORDANCE WITH LOCAL CODES. INSTALL MANUAL CONTROL DAMPERS IN ALL DUCTWORK TO ADJUST/CONTROL AMOUNT OF EXHAUST AIR. PROVIDE SUBMITTALS FOR DAMPER. RE-BALANCE AIR FLOW PER TAB
- INSTALL NEW VAV UNIT INTO EXISTING DUCT WORK SYSTEM AS SHOWN ON PLANS. PROVIDE ALL MOUNTING SUPPORT HANGERS AS REQ. IN ACCORDANCE WITH LOCAL CODES. WORK INCLUDE ALL STEAM LINE CONNECTIONS CONTROL THERMOSTAT SHALL BE MOUNTED ON WALL AS SHOWN AT 48" ABOVE FINISHED FLOOR. PROVIDE SUBMITTALS FOR VAV UNIT, CONTROLS AND THERMOSTAT.

REV. NO.	REVISION DESCRIPTION	DATE
1	RELOCATED PLUMBING FIXTURES & PIPING	4-11-14



UNITED STATES DEPARTMENT OF VETERANS AFFAIRS
VA MEDICAL CENTER - 1540 SPRING VALLEY DRIVE - HUNTINGTON WV 25704

MECHANICAL & PLUMBING PLANS

APPROVED:
CHRIS ECKLES
ASST' CHIEF, ENGINEERING

APPROVED:
JOHN KLIM
CHIEF, ENGINEERING

LOCKER/BREAKROOM RENOVATION PROJECT

BUILDING: 1 & 2
PROJECT NUMBER: 14-109
DRAWING NUMBER: MP1
DATE: JAN '14
DWG.