

three inches = one foot
one and one half inches = one foot
one inch = one foot
three quarters inch = one foot
one half inch = one foot
three eighths inch = one foot
one quarter inch = one foot
one eighth inch = one foot

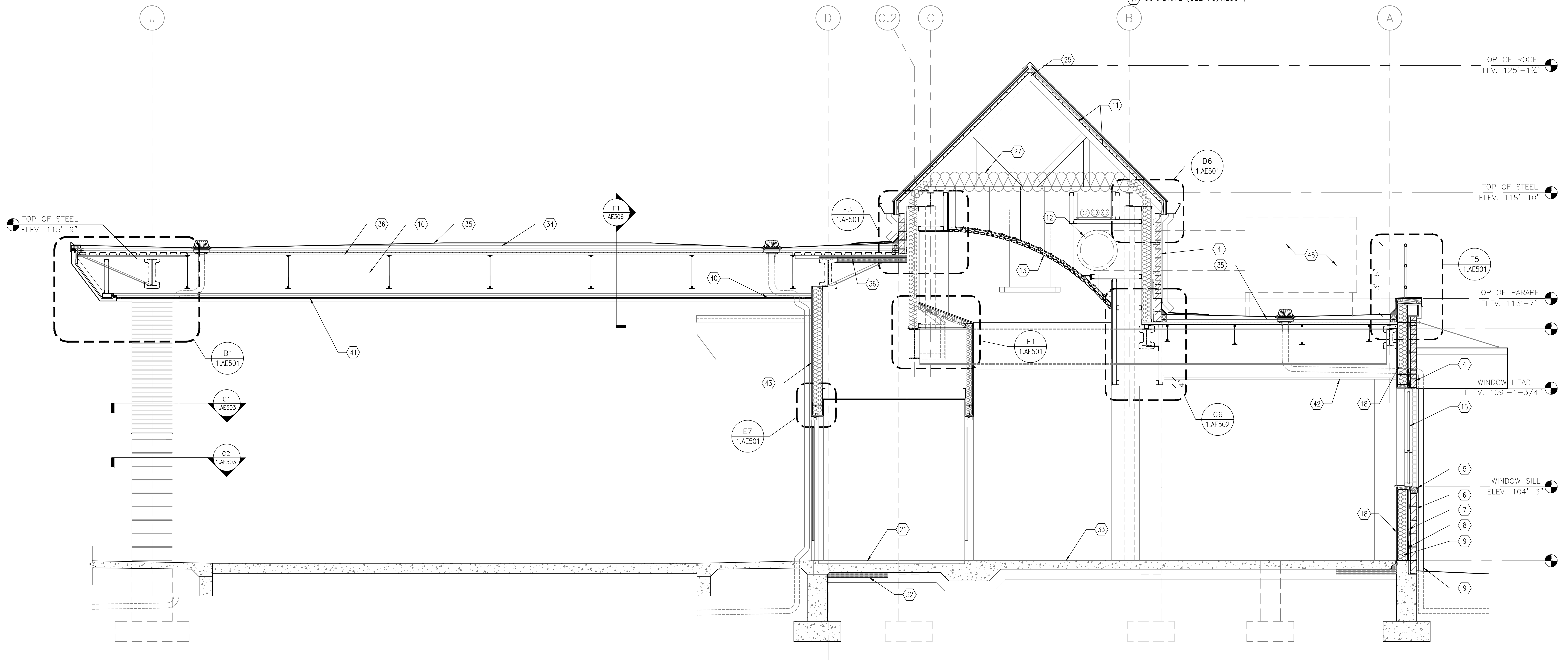
KEYNOTES

- 1 5/8" TYPE-X GYP BOARD.
- 2 8" WIDE ALUMINUM GUTTER.
- 3 TREATED WOOD BLOCKING
- 4 4" FACE BRICK TO MATCH NEW HOSPITAL.
- 5 PRECAST STONE SILL.
- 6 GROUND FACE BLOCK.
- 7 BUILDING WRAP STYLE VAPOR BARRIER.
- 8 R-5 FOAM INSULATION FOIL FACED EXTERIOR SHEATHING.
- 9 6" BATT INSULATION R-19 MIN.
- 10 STEEL JOIST WITH CEMENTITIOUS FIRE PROOFING. (REFER TO STRUCTURAL DWGS. FOR DETAILS)
- 11 ASPHALT SHINGLE ROOF OVER 15# FELT, (2) LAYERS OF 1/2" SHEATHING WITH 1x2 VERTICAL PURLINS BETWEEN @ 16" O.C., & 22GA 1.5B METAL DECK.
- 12 HVAC DUCTS; REFER TO MECHANICAL DWGS. FOR DETAILS.
- 13 FAUX WOOD METAL SLAT CEILING PANEL SYSTEM.
- 14 ALUMINUM ENTRY DOOR; REFER TO 1.AI601 FOR DOOR SCHEDULE.
- 15 THERMALLY BROKE ALUMINUM WINDOW FRAME W/ 1" INSULATED GLASS; SEE WINDOW ELEVATIONS FOR DETAILS.
- 16 STRUCTURAL MEMBER; REFER TO STRUCTURAL DWGS. FOR DETAILS.
- 17 AUTOMATED WINDOW SCREENS FOR CLERESTORY WINDOWS.
- 18 EXISTING BUILDING CONSTRUCTION TO REMAIN.
- 19 INSTALL 5/8" GYP. BOARD ON 3-5/8" METAL STUDS IN EXISTING DEMOLISHED WINDOW FRAME.
- 20 DOWNSPOUT BEYOND. TIE INTO STORM DRAIN. (SEE CIVIL DRAWINGS)
- 21 RECESSED WALK OFF MAT. SEE DETAIL B6/1.ID501
- 22 RIGID ROOF INSULATION. R-30 MIN.
- 23 2 PIECE ADJUSTABLE MASONRY ANCHORS @ 16" O.C., EACH WAY.
- 24 BRICK VENTS @ 40" O.C. MAX.
- 25 PRE-MANUFACTURED RIDGE VENT-CONTINUOUS
- 26 CONCRETE FOOTING AND FOUNDATIONS. REFER TO STRUCTURAL DWGS. FOR DETAILS.
- 27 12" BATT INSULATION. R-30 MIN.
- 28 INSULATION BAFFLE
- 29 1/2" FIRE TREATED OSB
- 30 METAL DECK. REFER TO STRUCTURAL DWGS. FOR DETAILS.

- 31 FLASHING WITH WEEPS @ 16" O.C. MAX.
- 32 UNDER SLAB RIGID INSULATION. 3'-0" WIDE, R-7 MIN.
- 33 CONCRETE FLOOR SLAB ON 4" GRANULAR FILL OVER VAPOR BARRIER.
- 34 RIGID ROOF INSULATION WITH TAPERED INSULATION.
- 35 SINGLE PLY ROOF MEMBRANE.
- 36 PROVIDE R-20 RIGID INSULATION OVER HEATED SPACE ONLY. PROVIDE MIN. THICKNESS ELSEWHERE FOR POSITIVE DRAINAGE AND WARRANTY.
- 37 METAL STUD ROOF TRUSSES. (SEE STRUCTURAL DWGS. FOR DETAILS)
- 38 TAPERED INSULATION.
- 39 EXISTING WALL CONSTRUCTION.
- 40 LINEAR DIFFUSER.
- 41 EIFS ON CEMENTITIOUS BOARD ON METAL FRAMING.
- 42 TAPERED WOOD PANEL CEILING SYSTEM. SEE RCP FOR DETAILS
- 43 COMPOSITE METAL PANEL.
- 44 2" LINEAR VENT.
- 45 4" BATT INSULATION.
- 46 NEW A.H.U. (SEE MECHANICAL DRAWINGS FOR DETAILS)
- 47 GUARDRAIL (SEE F5/AE501)

NOTES

- 1. REFER TO 1.AE001 FOR ARCHITECTURAL SYMBOLS AND ABBREVIATIONS.
- 2. REFER TO MECHANICAL, ELECTRICAL, AND PLUMBING SHEETS FOR SPECIFIC DEMOLITION NOTES FOR OTHER THAN GENERAL DEMOLITION.
- 3. REFER TO 1.ID101 FOR FINISH PLAN.
- 4. REFER TO 1.ID601 FOR FINISH SCHEDULE AND LEGEND.
- 5. REFER TO 1.AE101 FOR NEW WORK PLAN.
- 6. REFER TO 1.AI501 FOR WALL PROTECTION INFORMATION.
- 6. COORDINATE WORK WITH OTHER TRADES.



F1 SECTION THROUGH VESTIBULE AND CANOPY
1/2"-1'-0"

FULLY SPRINKLERED
BID DOCUMENTS 08-23-2013

<table border="1"><tr><td>Revision</td><td>01-10-14</td></tr><tr><td>Revision</td><td>03-18-14</td></tr><tr><td>Revision</td><td>04-02-14</td></tr><tr><td>Revision</td><td>04-04-14</td></tr><tr><td> </td><td> </td></tr><tr><td> </td><td> </td></tr><tr><td> </td><td> </td></tr><tr><td> </td><td> </td></tr><tr><td>Revisions</td><td>Date</td></tr></table>	Revision	01-10-14	Revision	03-18-14	Revision	04-02-14	Revision	04-04-14									Revisions	Date	CONSULTANTS:		ARCHITECT/ENGINEERS:	<div>PARADIGM ENGINEERS AND CONSTRUCTORS 200 Envoy Circle #201, Louisville KY 40299 - PH: 502.339.8511 - www.paradigmusa.com</div>	<div>COMMONWEALTH OF PENNSYLVANIA REGISTERED PROFESSIONAL BLAINE VAN GANSBEKE ENGINEER No. PE079836</div>	Drawing Title: BUILDING AND WALL SECTIONS	Project Title: NEW FRONT ENTRANCE BUILDING 1	Project Number: 595-11-125	Office of Construction and Facilities Management
Revision	01-10-14																										
Revision	03-18-14																										
Revision	04-02-14																										
Revision	04-04-14																										
Revisions	Date																										
						Location: LEBANON VAMC 1700 SOUTH LINCOLN AVE, LEBANON PA 17042-7829	Building Number: 1	Drawing Number: 1.AE301																			
						Approved Project Director:	Date: 08-28-2013	Checked: BYG	Drawn: FW																		