

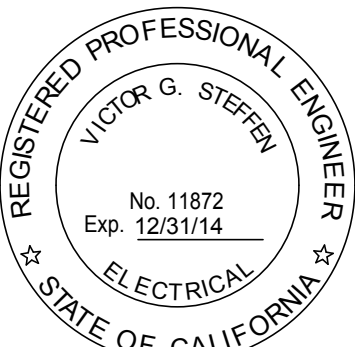

three inches = one foot
one and one half inches = one foot
one inch = one foot
three quarters inch = one foot
one half inch = one foot
three eighths inch = one foot
one quarter inch = one foot
one eighth inch = one foot

HILLIARD ARCHITECTS INC. COPYRIGHT



FIRST FLOOR
TECHNOLOGY OVERALL
ADMIN
1/8" = 1'-0"

FINAL BID DOCUMENTS

		CONSULTANTS:				ARCHITECT/ENGINEERS:		Drawing Title TECHNOLOGY OVERALL FLOOR PLAN		Project Title VA PA BLDG 6 ADMINISTRATIVE EXPANSION		Project Number 640-13-121P		<div>Office of Construction and Facilities Management</div> <div> Department of Veterans Affairs</div>			
								Approved: Project Director		Location VAPAHCS, PALO ALTO CAMPUS 3801 MIRANDA AVE. PALO ALTO, CA 94304		Building Number 6					
										Date 04.17.2014		Checked H.C.				Drawing Number T1.00A	
												Dwg. of					

VA FORM 08-6231

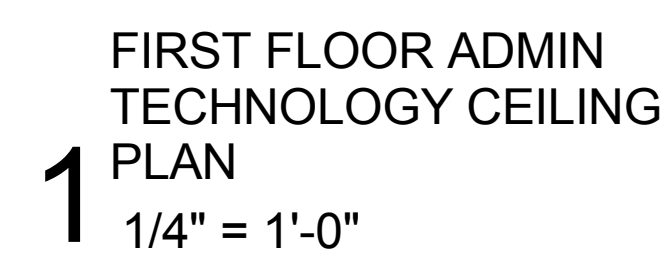
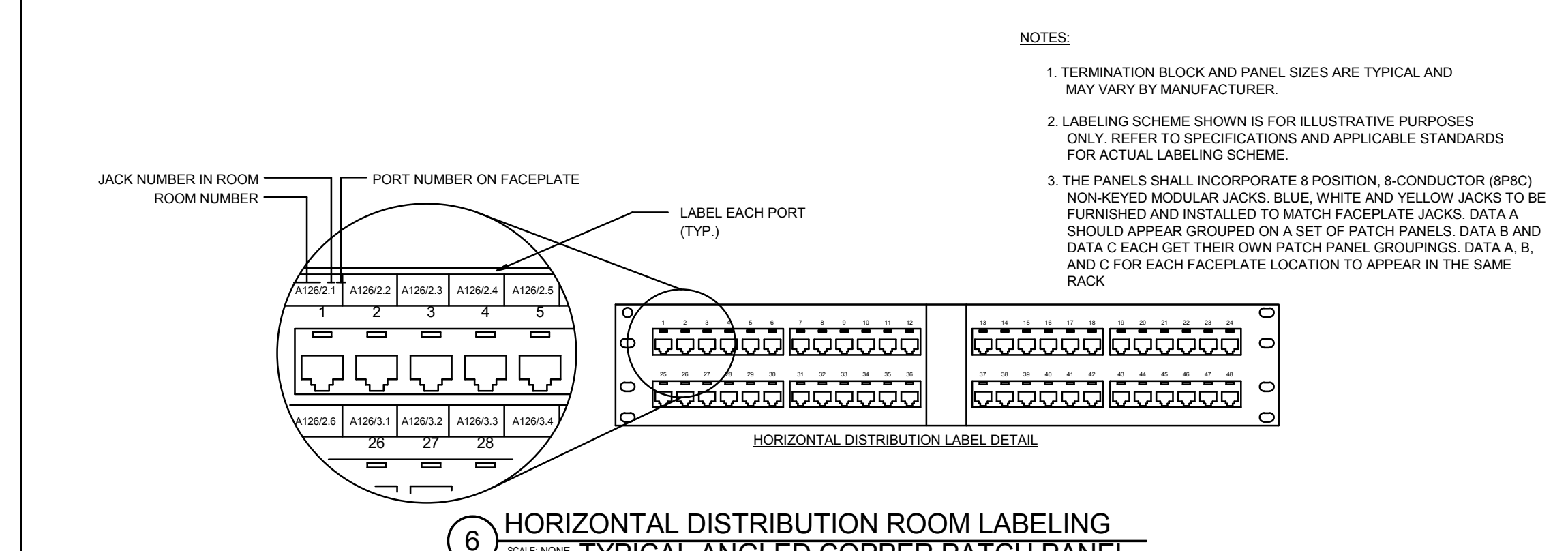
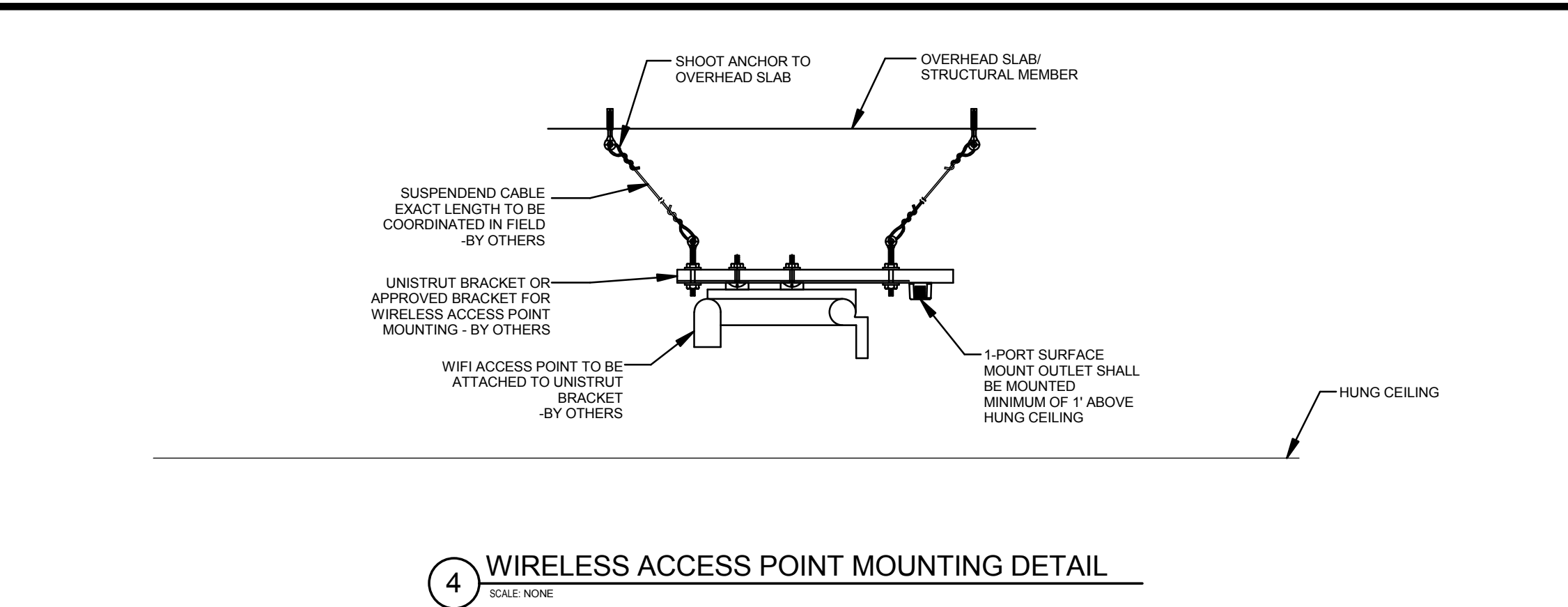
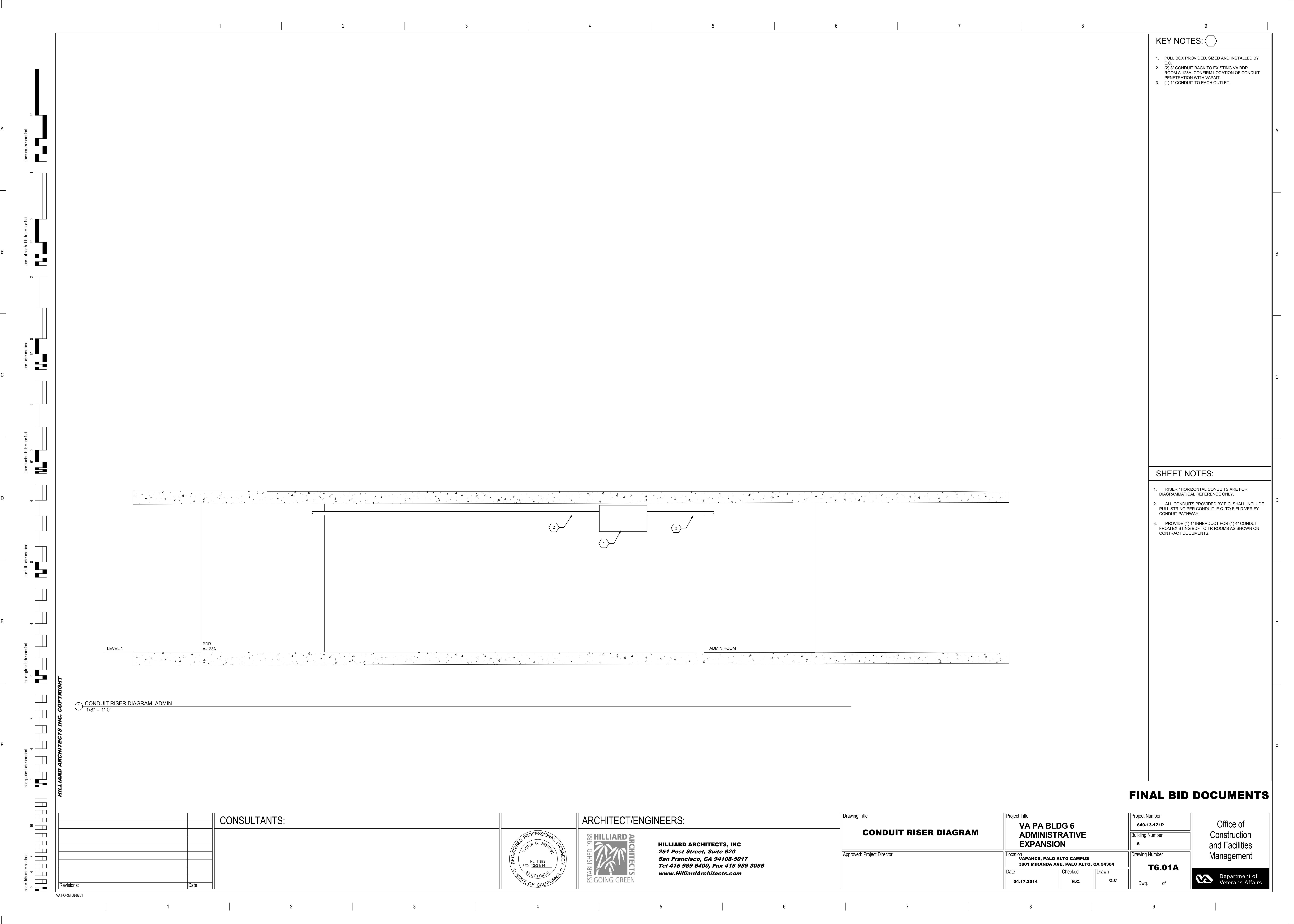


Figure 10: A sequence of 16 diagrams illustrating the construction of a 16-bit word from 16 one-bit nodes. The diagrams are arranged vertically, with the 16-bit word at the top and the 16 one-bit nodes at the bottom. Each diagram shows a sequence of 16 nodes, with some nodes being black (representing 1) and others white (representing 0). The nodes are connected by lines, and the sequence of nodes is shown for each of the 16 bits. The 16-bit word is shown as a sequence of 16 nodes, with the first node being black and the rest being white. The 16 one-bit nodes are shown as a sequence of 16 nodes, with the first node being black and the rest being white. The diagrams are labeled with the bit number (1 to 16) and the node number (1 to 16).

Office of
Construction
and Facilities
Management

[illegible]





A

B

C

D

E

F

A

B

C

D

E

F

three holes = one foot
6"

one and one half holes = one foot
6"

one inch = one foot
6"

three quarters inch = one foot
6"

one half inch = one foot
6"

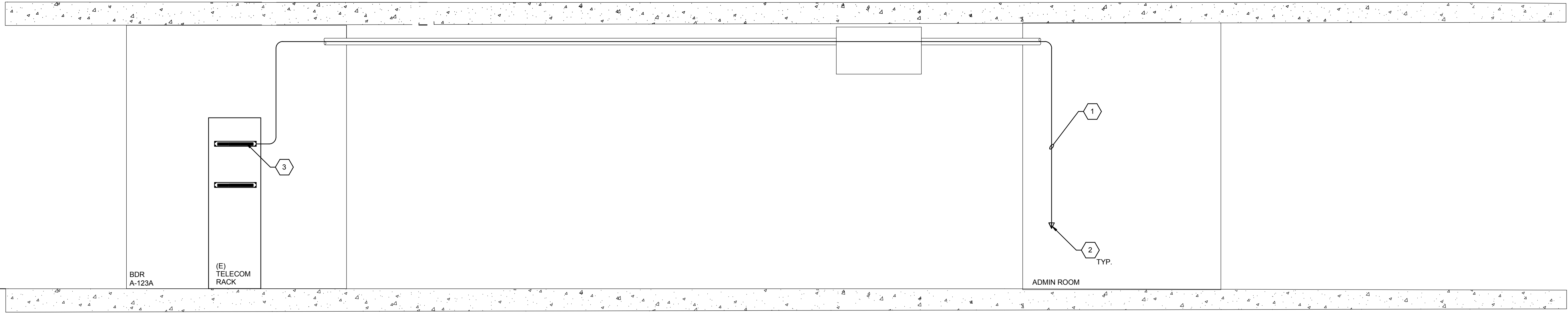
three eighths inch = one foot
6"

one quarter inch = one foot
6"

one eighth inch = one foot
6"

HILLIARD ARCHITECTS INC. COPYRIGHT

1 COPPER SINGLE LINE DIAGRAM_ADMIN
1/8" = 1'-0"



KEY NOTES:

- (6) CAT 6 UTP TO WORK AREA OUTLETS. TYPICAL.
- WORK AREA OUTLETS. TYPICAL.
- CAT6 48 PORT PATCH PANEL.

SHEET NOTES:

- COORDINATE WITH VA O&T FOR TERMINATION OF CABLING WITHIN ROOM BDR A-123A.

FINAL BID DOCUMENTS

		CONSULTANTS:				ARCHITECT/ENGINEERS:		Drawing Title COPPER SINGLE LINE DIAGRAM		Project Title VA PA BLDG 6 ADMINISTRATIVE EXPANSION		Project Number 640-13-121P		Office of Construction and Facilities Management 			
								Approved: Project Director		Location VAPAHCs, PALO ALTO CAMPUS 3801 MIRANDA AVE. PALO ALTO, CA 94304		Building Number 6					
Revisions:		Date								Date 04.17.2014		Checked H.C.		Drawn C.C.		Drawing Number T6.02A	
												Dwg. of					