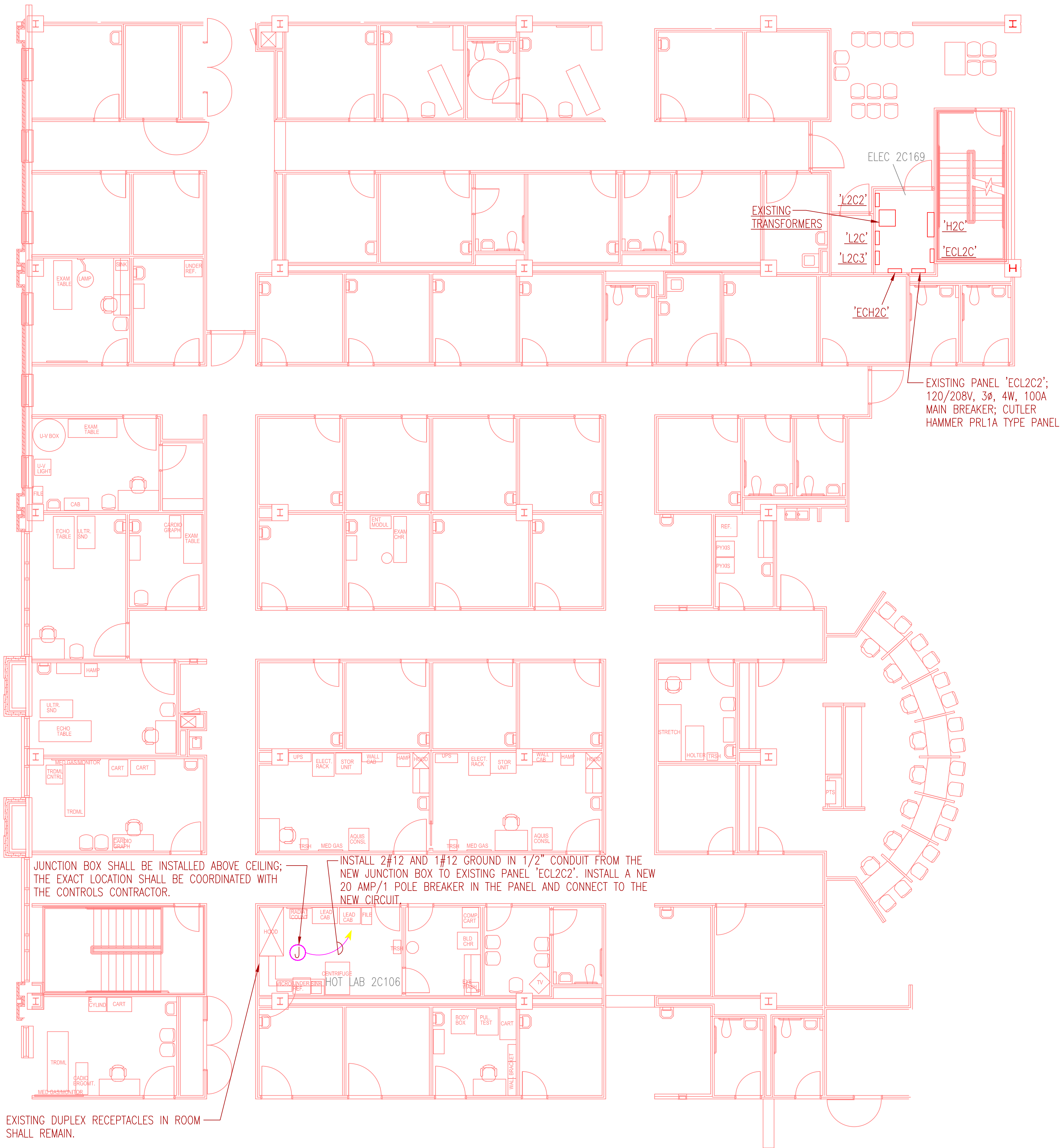


one eighth inch = one foot (for a sheet plotted at 30"x42")
one quarter inch = one foot (for a sheet plotted at 30"x42")
three eighths inch = one foot (for a sheet plotted at 30"x42")
one half inch = one foot (for a sheet plotted at 30"x42")
one inch = one foot (for a sheet plotted at 30"x42")
one and one half inches = one foot (for a sheet plotted at 30"x42")
two inches = one foot (for a sheet plotted at 30"x42")
three inches = one foot (for a sheet plotted at 30"x42")
four inches = one foot (for a sheet plotted at 30"x42")
five inches = one foot (for a sheet plotted at 30"x42")
six inches = one foot (for a sheet plotted at 30"x42")
seven inches = one foot (for a sheet plotted at 30"x42")
eight inches = one foot (for a sheet plotted at 30"x42")
nine inches = one foot (for a sheet plotted at 30"x42")
ten inches = one foot (for a sheet plotted at 30"x42")
eleven inches = one foot (for a sheet plotted at 30"x42")
twelve inches = one foot (for a sheet plotted at 30"x42")
thirteen inches = one foot (for a sheet plotted at 30"x42")
fourteen inches = one foot (for a sheet plotted at 30"x42")
fifteen inches = one foot (for a sheet plotted at 30"x42")
sixteen inches = one foot (for a sheet plotted at 30"x42")
seventeen inches = one foot (for a sheet plotted at 30"x42")
eighteen inches = one foot (for a sheet plotted at 30"x42")
nineteen inches = one foot (for a sheet plotted at 30"x42")
twenty inches = one foot (for a sheet plotted at 30"x42")
twenty one inches = one foot (for a sheet plotted at 30"x42")
twenty two inches = one foot (for a sheet plotted at 30"x42")
twenty three inches = one foot (for a sheet plotted at 30"x42")
twenty four inches = one foot (for a sheet plotted at 30"x42")
twenty five inches = one foot (for a sheet plotted at 30"x42")
twenty six inches = one foot (for a sheet plotted at 30"x42")
twenty seven inches = one foot (for a sheet plotted at 30"x42")
twenty eight inches = one foot (for a sheet plotted at 30"x42")
twenty nine inches = one foot (for a sheet plotted at 30"x42")
thirty inches = one foot (for a sheet plotted at 30"x42")
thirty one inches = one foot (for a sheet plotted at 30"x42")
thirty two inches = one foot (for a sheet plotted at 30"x42")
thirty three inches = one foot (for a sheet plotted at 30"x42")
thirty four inches = one foot (for a sheet plotted at 30"x42")
thirty five inches = one foot (for a sheet plotted at 30"x42")
thirty six inches = one foot (for a sheet plotted at 30"x42")
thirty seven inches = one foot (for a sheet plotted at 30"x42")
thirty eight inches = one foot (for a sheet plotted at 30"x42")
thirty nine inches = one foot (for a sheet plotted at 30"x42")
forty inches = one foot (for a sheet plotted at 30"x42")
forty one inches = one foot (for a sheet plotted at 30"x42")
forty two inches = one foot (for a sheet plotted at 30"x42")
forty three inches = one foot (for a sheet plotted at 30"x42")
forty four inches = one foot (for a sheet plotted at 30"x42")
forty five inches = one foot (for a sheet plotted at 30"x42")
forty six inches = one foot (for a sheet plotted at 30"x42")
forty seven inches = one foot (for a sheet plotted at 30"x42")
forty eight inches = one foot (for a sheet plotted at 30"x42")
forty nine inches = one foot (for a sheet plotted at 30"x42")
fifty inches = one foot (for a sheet plotted at 30"x42")
fifty one inches = one foot (for a sheet plotted at 30"x42")
fifty two inches = one foot (for a sheet plotted at 30"x42")
fifty three inches = one foot (for a sheet plotted at 30"x42")
fifty four inches = one foot (for a sheet plotted at 30"x42")
fifty five inches = one foot (for a sheet plotted at 30"x42")
fifty six inches = one foot (for a sheet plotted at 30"x42")
fifty seven inches = one foot (for a sheet plotted at 30"x42")
fifty eight inches = one foot (for a sheet plotted at 30"x42")
fifty nine inches = one foot (for a sheet plotted at 30"x42")
sixty inches = one foot (for a sheet plotted at 30"x42")
sixty one inches = one foot (for a sheet plotted at 30"x42")
sixty two inches = one foot (for a sheet plotted at 30"x42")
sixty three inches = one foot (for a sheet plotted at 30"x42")
sixty four inches = one foot (for a sheet plotted at 30"x42")
sixty five inches = one foot (for a sheet plotted at 30"x42")
sixty six inches = one foot (for a sheet plotted at 30"x42")
sixty seven inches = one foot (for a sheet plotted at 30"x42")
sixty eight inches = one foot (for a sheet plotted at 30"x42")
sixty nine inches = one foot (for a sheet plotted at 30"x42")
seventy inches = one foot (for a sheet plotted at 30"x42")
seventy one inches = one foot (for a sheet plotted at 30"x42")
seventy two inches = one foot (for a sheet plotted at 30"x42")
seventy three inches = one foot (for a sheet plotted at 30"x42")
seventy four inches = one foot (for a sheet plotted at 30"x42")
seventy five inches = one foot (for a sheet plotted at 30"x42")
seventy six inches = one foot (for a sheet plotted at 30"x42")
seventy seven inches = one foot (for a sheet plotted at 30"x42")
seventy eight inches = one foot (for a sheet plotted at 30"x42")
seventy nine inches = one foot (for a sheet plotted at 30"x42")
eighty inches = one foot (for a sheet plotted at 30"x42")
eighty one inches = one foot (for a sheet plotted at 30"x42")
eighty two inches = one foot (for a sheet plotted at 30"x42")
eighty three inches = one foot (for a sheet plotted at 30"x42")
eighty four inches = one foot (for a sheet plotted at 30"x42")
eighty five inches = one foot (for a sheet plotted at 30"x42")
eighty six inches = one foot (for a sheet plotted at 30"x42")
eighty seven inches = one foot (for a sheet plotted at 30"x42")
eighty eight inches = one foot (for a sheet plotted at 30"x42")
eighty nine inches = one foot (for a sheet plotted at 30"x42")
ninety inches = one foot (for a sheet plotted at 30"x42")
ninety one inches = one foot (for a sheet plotted at 30"x42")
ninety two inches = one foot (for a sheet plotted at 30"x42")
ninety three inches = one foot (for a sheet plotted at 30"x42")
ninety four inches = one foot (for a sheet plotted at 30"x42")
ninety five inches = one foot (for a sheet plotted at 30"x42")
ninety six inches = one foot (for a sheet plotted at 30"x42")
ninety seven inches = one foot (for a sheet plotted at 30"x42")
ninety eight inches = one foot (for a sheet plotted at 30"x42")
ninety nine inches = one foot (for a sheet plotted at 30"x42")
one hundred inches = one foot (for a sheet plotted at 30"x42")



OVERALL 2ND FLOOR ELECTRICAL PLAN
SCALE: 1/8"=1'0"

FRANK DAUGHTRY
architect pl
AA26002048
200 E. Government Street
Pensacola, FL 32502
Voice 850-433-3023
Fax 850-433-3025
Email frank@frankda.com

CONSULTANTS:

J:\blocks\BYA Logo large.jpg

216 E. Government St.
Pensacola FL 32502
FBPE Authorization No. 9617
PH: (850)939-3663
Email: admin@bagwellpl.com
FL PE No.-59251 & 60826

PROJECT NAME

JOINT AMBULATORY CARE CENTER
NUCLEAR MEDICAL RADIOISOTOPE HOOD

VA GULF COAST VETERANS HEALTH CARE SYSTEM
6425 OFFICE PARK PLAZA
NORTH PENSACOLA BLVD.
PENSACOLA, FL 32503

REVISIONS

DATE

KEY PLAN

STAMP

DATE

9/21/12

DRAWN

D. BAGWELL

CHECKED

D. BAGWELL

SHEET TITLE

PARTIAL 2ND
FLOOR ELECTRICAL
PLAN

SCALE

" = 1'-0"
0 16' 32'

CONSTRUCTION SUBMITTAL

PROJECT NUMBER

05090-00

BUILDING NUMBER

N/A

DRAWING NUMBER

E-2

Office of
Facilities
Management

Department of
Veterans Affairs