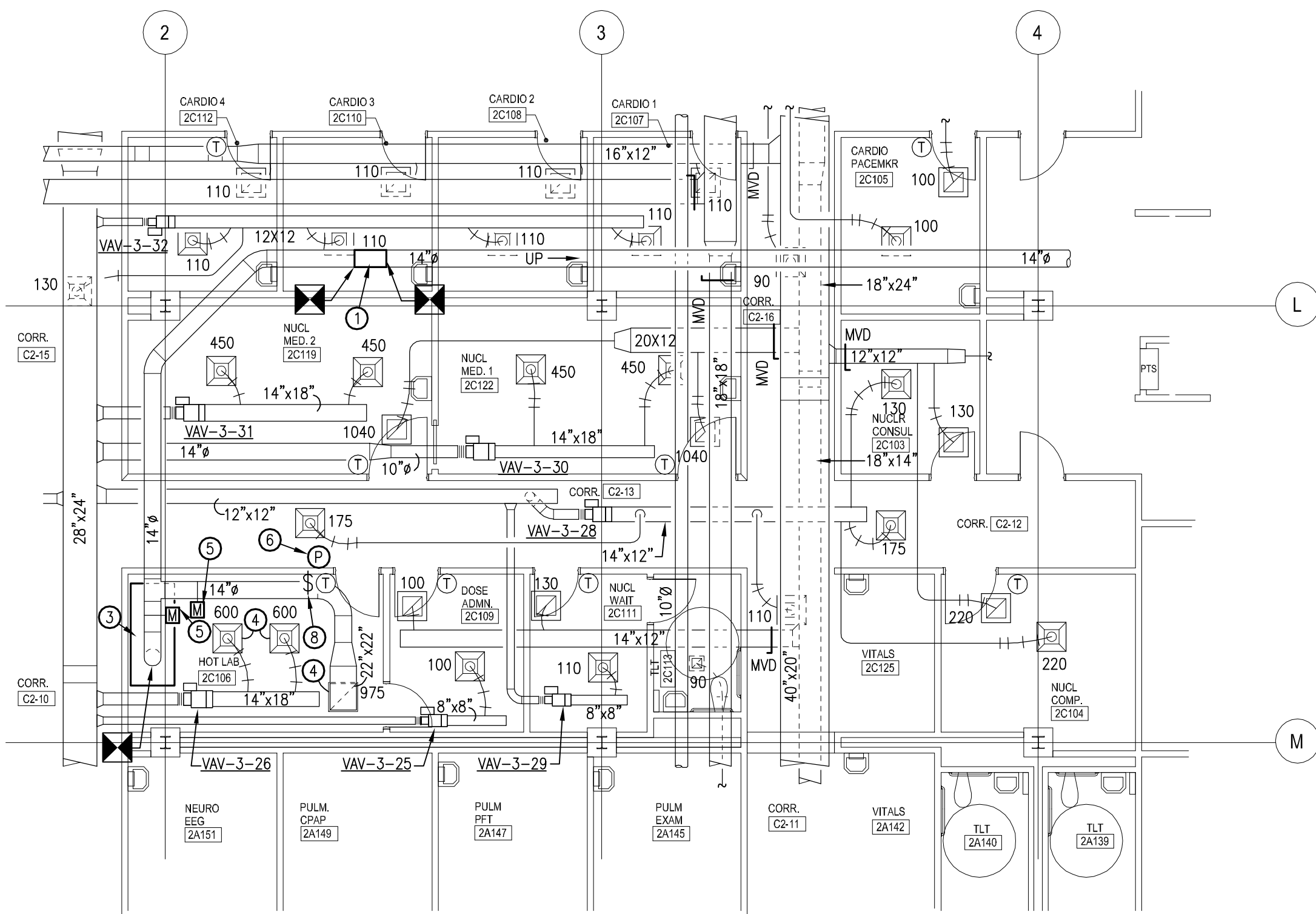
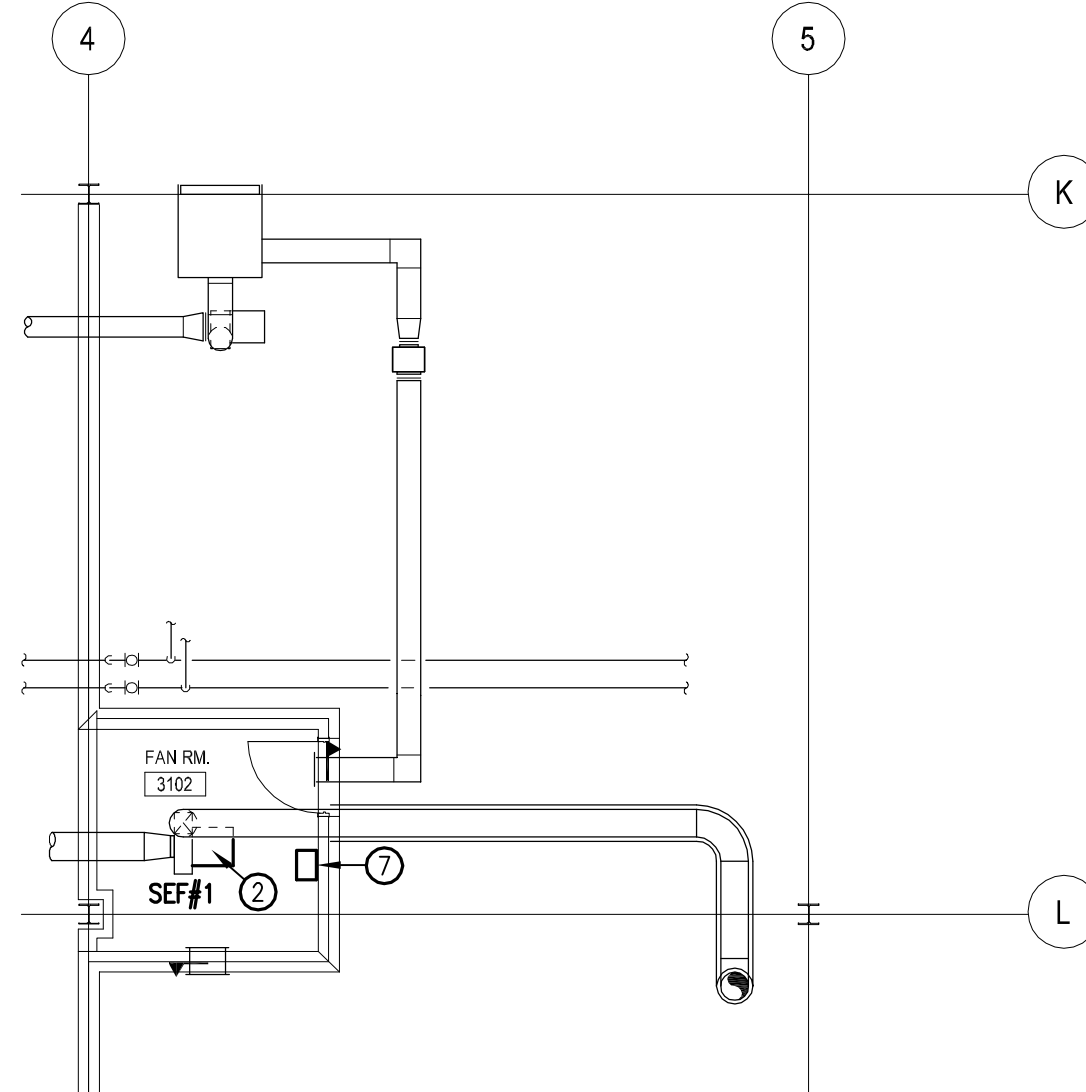


HVAC PARTIAL BUILDING SECTION
SCALE: 1/8" = 1'-0"



HVAC PARTIAL SECOND FLOOR NEW WORK PLAN
SCALE: 1/8" = 1'-0"



HVAC PARTIAL THIRD FLOOR NEW WORK PLAN
SCALE: 1/8" = 1'-0"

HVAC NEW WORK KEY NOTES:

1. INSTALL NEW SECTION OF 14" WELDED STAINLESS STEEL DUCT.
2. RETROFIT NEW EXPLOSION PROOF FAN MOTOR AND DISCONNECT.
3. INSTALL NEW RADIOISOTOPE HOOD PROVIDED BY OWNER. CONNECT TO EXISTING DUCTWORK.
4. REBALANCE EXISTING CEILING DIFFUSER TO INDICATED AIR FLOW.
5. INSTALL NEW DAMPER ACTUATOR ON EXISTING DAMPER. VALVE IN DUCT ABOVE THE HOOD.
6. NEW ROOM PRESSURE MONITOR WITH LOCAL READOUT AND ALARM. CONNECT TO DDC SYSTEM.
7. NEW VARIABLE FREQUENCY DRIVE FOR EXHAUST FAN.
8. NEW WALL MOUNTED TOGGLE SWITCH FOR HOOD CONTROL. THE SWITCH SHALL BE LABELED "HOOD ON" FOR THE OCCUPIED MODE IN THE SEQUENCE OF OPERATION AND LABELED "HOOD OFF" FOR THE UNOCCUPIED MODE.

HVAC GENERAL NOTES:

1. THE TEST AND BALANCE CONTRACTOR AND THE CONTROLS CONTRACTOR SHALL WORK TOGETHER ON SITE TO PROPERLY CALIBRATE THE EXHAUST SO THAT AIRFLOWS LISTED IN THE AIR BALANCE SCHEDULE AND SEQUENCE OF OPERATION ARE ACHIEVED.



FRANK DAUGHTRY
architect p/a
AA26002048
200 E. Government Street
Pensacola, FL 32502
Voice 850-433-3023
Fax 850-433-3025
Email frank@frankda.com

CONSULTANTS:

H.M. Yonge & Assoc., Inc.
Consulting Engineers

401 E. CHASSE STREET, SUITE 200
PENSACOLA, FLORIDA 32502
PHONE: (850) 434-2661

* CERTIFICATE OF AUTHORIZATION NO.: 5254
* MECHANICAL ENGINEER: TIMOTHY J. MITCHELL, P.E.
FLORIDA REG. NO. 68792

PROJECT NAME

JOINT AMBULATORY CARE CENTER
NUCLEAR MEDICAL RADIOISOTOPE HOOD

VA GULF COAST VETERANS HEALTH CARE SYSTEM
6425 OFFICE PARK PLAZA
NORTH PENSACOLA BLVD.
PENSACOLA, FL 32503

REVISIONS

DATE

KEY PLAN

STAMP



DATE

05/10/13

DRAWN

T. MITCHELL

CHECKED

T. MITCHELL

SHEET TITLE

HVAC NEW WORK PLAN

SCALE

1/8" = 1'-0"
0 16' 32'

CONSTRUCTION SUBMITTAL

PROJECT NUMBER

05090-00

BUILDING NUMBER

N/A

DRAWING NUMBER

M-201

Office of
Facilities
Management

Department of
Veterans Affairs