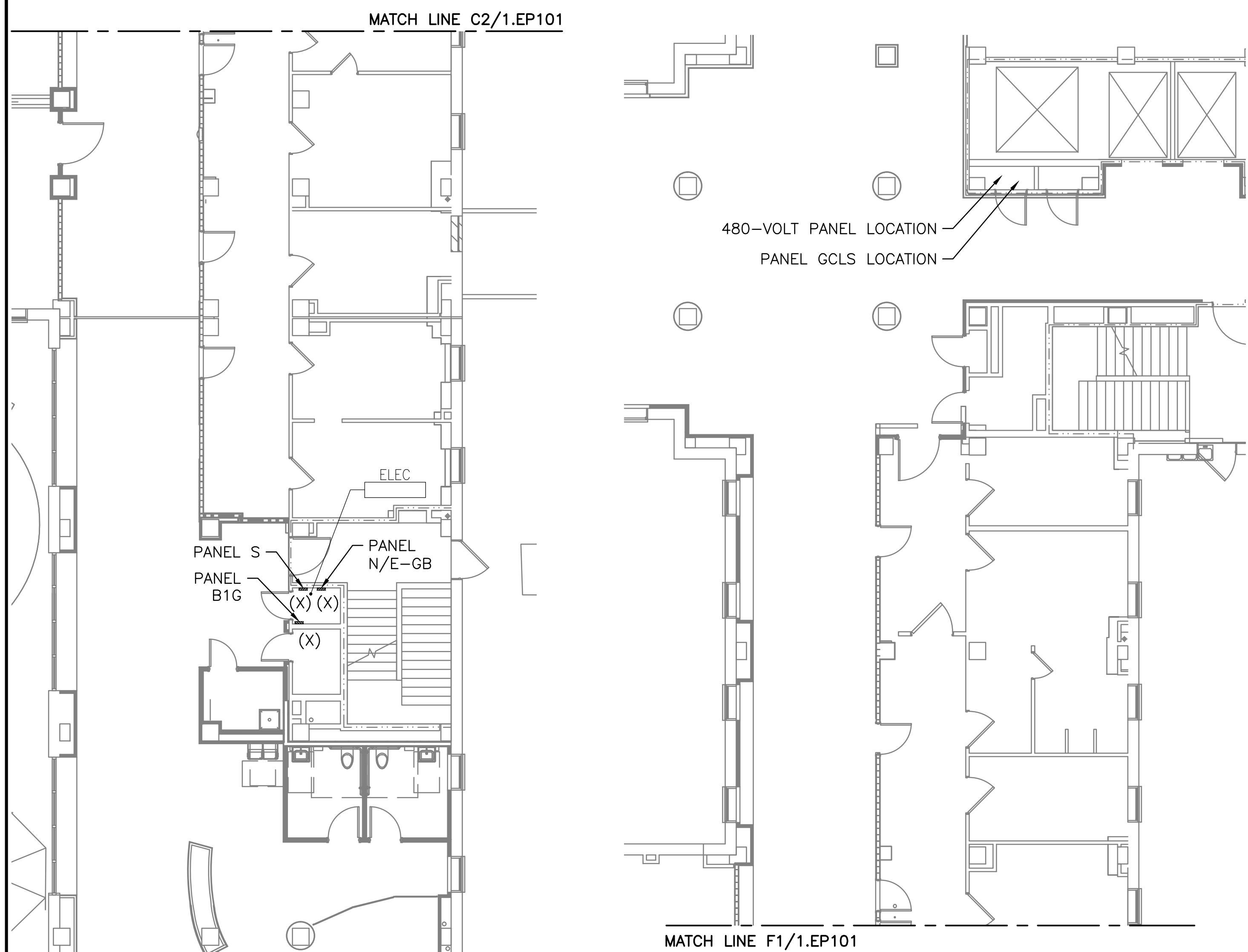
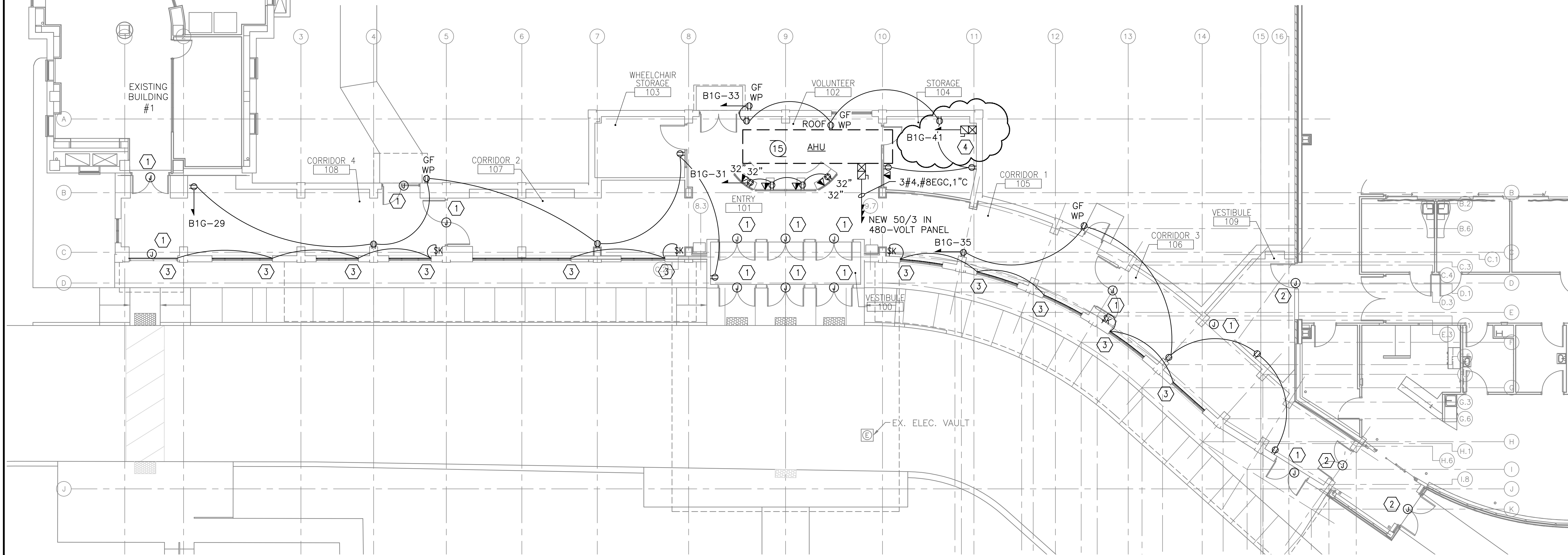


three inches = one foot
one and one half inches = one foot
one inch = one foot
three quarters inch = one foot
one half inch = one foot
three eighths inch = one foot
one quarter inch = one foot
one eighth inch = one foot



C2 PARTIAL FIRST FLOOR PLAN
1/8" = 1'-0"



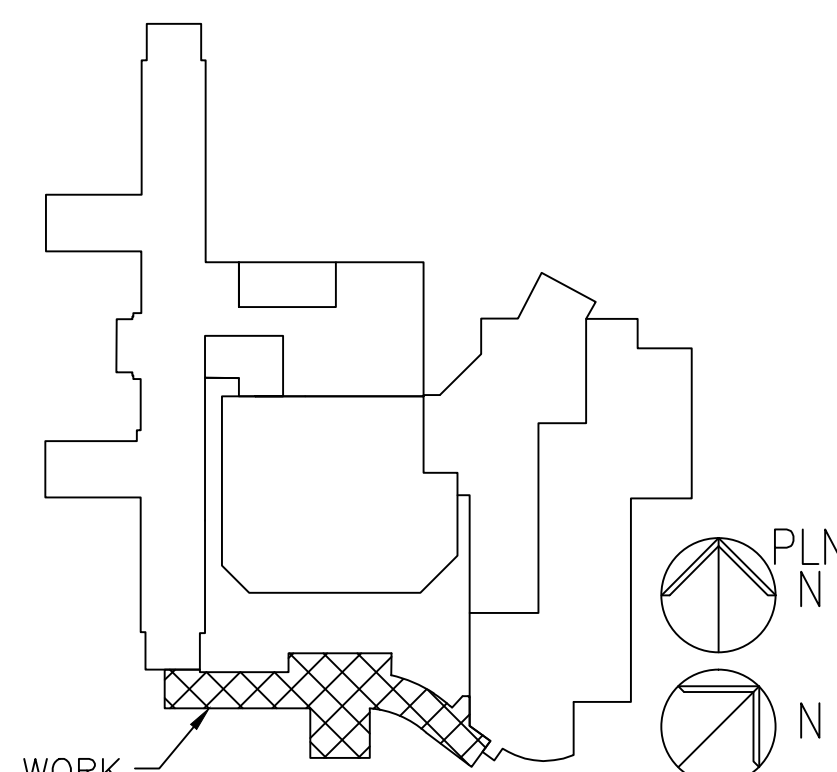
F1 PARTIAL FIRST FLOOR PLAN
1/8" = 1'-0"

NOTES

1. REFER TO SHEET 1.E-001 FOR LEGEND, ABBREVIATIONS, SCHEDULES AND GENERAL NOTES.
2. ALL RECEPTACLES SHALL BE UL LISTED AND MARKED AS HOSPITAL GRADE.
3. REFER TO ARCHITECT'S CASEWORK DETAILS AND ROOM ELEVATIONS FOR EXACT LOCATIONS AND MOUNTING HEIGHTS OF DEVICES.

KEYED NOTES

- 1 CONNECT AUTOMATIC DOOR OPERATORS TO LIFE SAFETY PANEL 'GCLS' CIRCUIT 10.
- 2 CONNECT AUTOMATIC DOOR OPERATORS TO EXISTING LIFE SAFETY CIRCUIT FROM SURGERY BUILDING.
- 3 CONNECT AUTOMATIC SHADES IN CLERESTORY WINDOWS TO CIRCUIT 'B1G-37'. INSTALL ALL WIRING AND PROVIDE ALL CONNECTIONS AS REQUIRED FOR SUBMITTED SHADE PRODUCTS INCLUDING INSTALLATION OF ALL POWER SUPPLIES, SENSORS, AND ACCESSORIES.
- 4 CONNECT SPRINKLER AIR COMPRESSOR INCLUDING 120-VOLT CONTROLS. FURNISH AND INSTALL CIRCUIT BREAKER LOCK.



KEYPLAN - NOT TO SCALE

FULLY SPRINKLERED
BID DOCUMENTS 08-23-2013

AMENDMENT	04-22-14
Revisions	Date

CONSULTANTS:

ARCHITECT/ENGINEERS:

PARADIGM
ENGINEERS AND CONSTRUCTORS

200 Envoy Circle #201, Louisville KY 40299 - PH: 502.339.8511 - www.paradigmusa.com



Drawing Title:
ELECTRICAL POWER PLAN

Approved Project Director

Project Title:
NEW FRONT ENTRANCE BUILDING 1

Location:
LEBANON VAMC
1700 SOUTH LINCOLN AVE, LEBANON PA 17042-7829

Date:
06-28-2013

Checked:
BYG

Drawn:
BAM

Project Number:
595-11-125

Building Number:
1

Drawing Number:
1.EP101

Office of
Construction
and Facilities
Management

