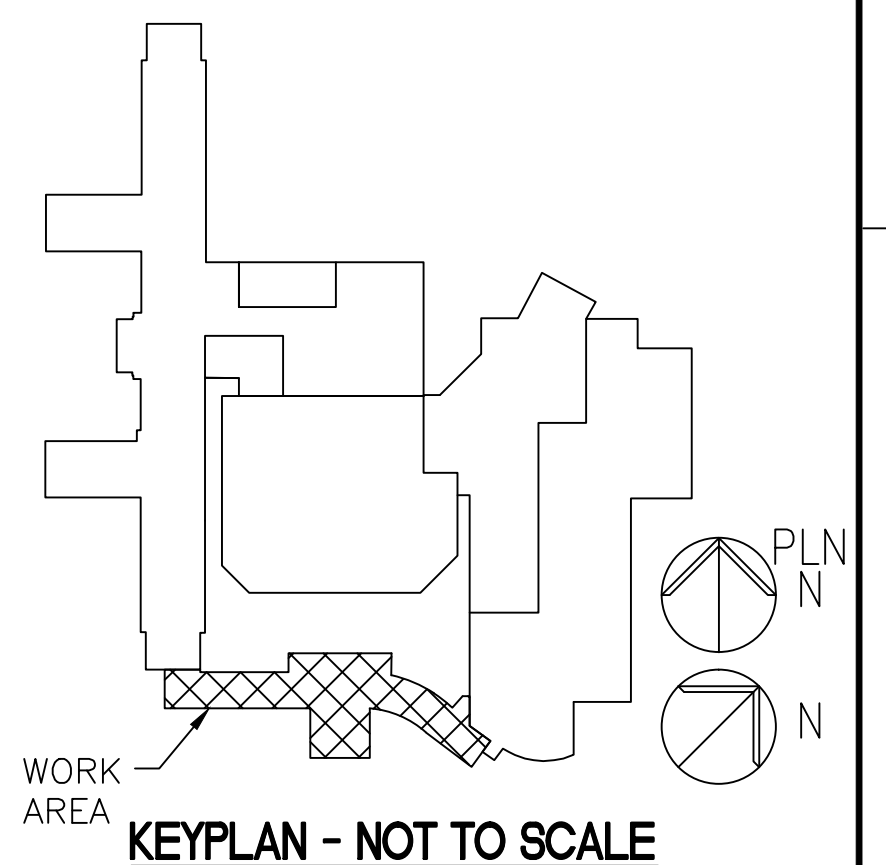


three inches = one foot
one and one half inches = one foot
one inch = one foot
three quarters inch = one foot
one half inch = one foot
three eighths inch = one foot
one quarter inch = one foot
one eighth inch = one foot

- NOTES**
1. REFER TO SHEET 1.E-001 FOR LEGEND, ABBREVIATIONS, SCHEDULES AND GENERAL NOTES.
 2. CONNECT NEW FIRE ALARM INITIATION DEVICES TO EXISTING INITIATION LOOP OF EXISTING FIRE ALARM SYSTEM.
 3. CONNECT NEW FIRE ALARM SIGNALING DEVICES TO EXISTING SIGNALING CIRCUITS. PROVIDE CIRCUIT EXPANDER AND AMPLIFIER AS MAY BE REQUIRED. CONFIRM CAPACITY AND SUBMIT FOR APPROVAL.
 4. CONNECT NEW DOOR HOLD-OPEN DEVICES TO EXISTING DOOR HOLDER CIRCUIT. CONFIRM CAPACITY OF DOOR HOLDER CIRCUIT AND INCLUDE ANY REQUIRED ADDITIONAL EQUIPMENT OR DEVICES FOR PROPER OPERATION. SUBMIT FOR APPROVAL.
 5. REFER TO PHASING PLAN FOR PROJECT PHASING REQUIREMENTS.
 6. REFER TO FIRE PROTECTION SHEETS FOR SPRINKLER ZONE LOCATIONS. REFER TO LIFE SAFETY PLAN FOR SMOKE PARTITION LOCATIONS DELINEATING EXISTING AND NEW SMOKE COMPARTMENTS.
 7. ALL NEW FIRE ALARM WORK SHALL BE COMPLETED BY NICET3 CERTIFIED TECHNICIANS.

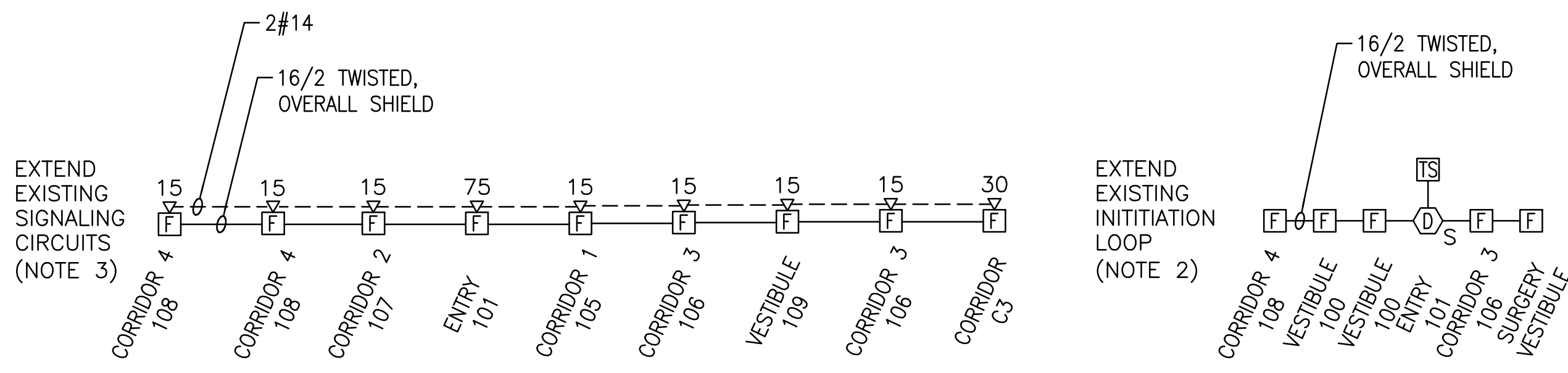
- KEY NOTES**
1. COORDINATE EXACT LOCATION OF DUCT SMOKE DETECTOR WITH MECHANICAL CONTRACTOR.
 2. COORDINATE REQUIREMENTS FOR SPRINKLER SYSTEM AIR COMPRESSOR WITH SPRINKLER CONTRACTOR.

- LEGEND**
- F FIRE ALARM PULL STATION. MOUNTED 48" AFF TO CENTERLINE OF STATION.
 - 15 AUDIO/VISUAL ALARM. COMBINATION SPEAKER WITH ADJUSTABLE CANDELA STROBE LIGHT. WALL MOUNTED 90" AFF TO TOP. CEILING MOUNT WHERE INDICATED. NUMBER INDICATES CANDELA RATING OF STROBE. 'WP' INDICATES WEATHERPROOF UNIT.
 - 15 VISUAL ALARM. ADJUSTABLE CANDELA STROBE LIGHT. WALL MOUNTED 90" AFF TO TOP. CEILING MOUNT WHERE INDICATED. NUMBER INDICATES CANDELA RATING OF STROBE. REFER TO SPECIAL REQUIREMENTS IN SLEEPING AREAS. NS INDICATES NON-SUPERVISED 120 VOLT REMOTE VISUAL SIGNAL, 177 CANDELA, CONNECTED TO NON-SUPERVISED SMOKE DETECTOR.
 - TS REMOTE TEST STATION WITH RESET FOR DUCT SMOKE DETECTOR
 - D S DUCT SMOKE DETECTOR
S 'S' INDICATES LOCATED IN SUPPLY PLENUM
R 'R' INDICATES LOCATED IN RETURN PLENUM
 - MM MONITOR MODULE
 - SFS SPRINKLER FLOW SWITCH
 - SLP SPRINKLER LOW PRESSURE SWITCH
 - SIS SPRINKLER VALVE TAMPER SWITCH

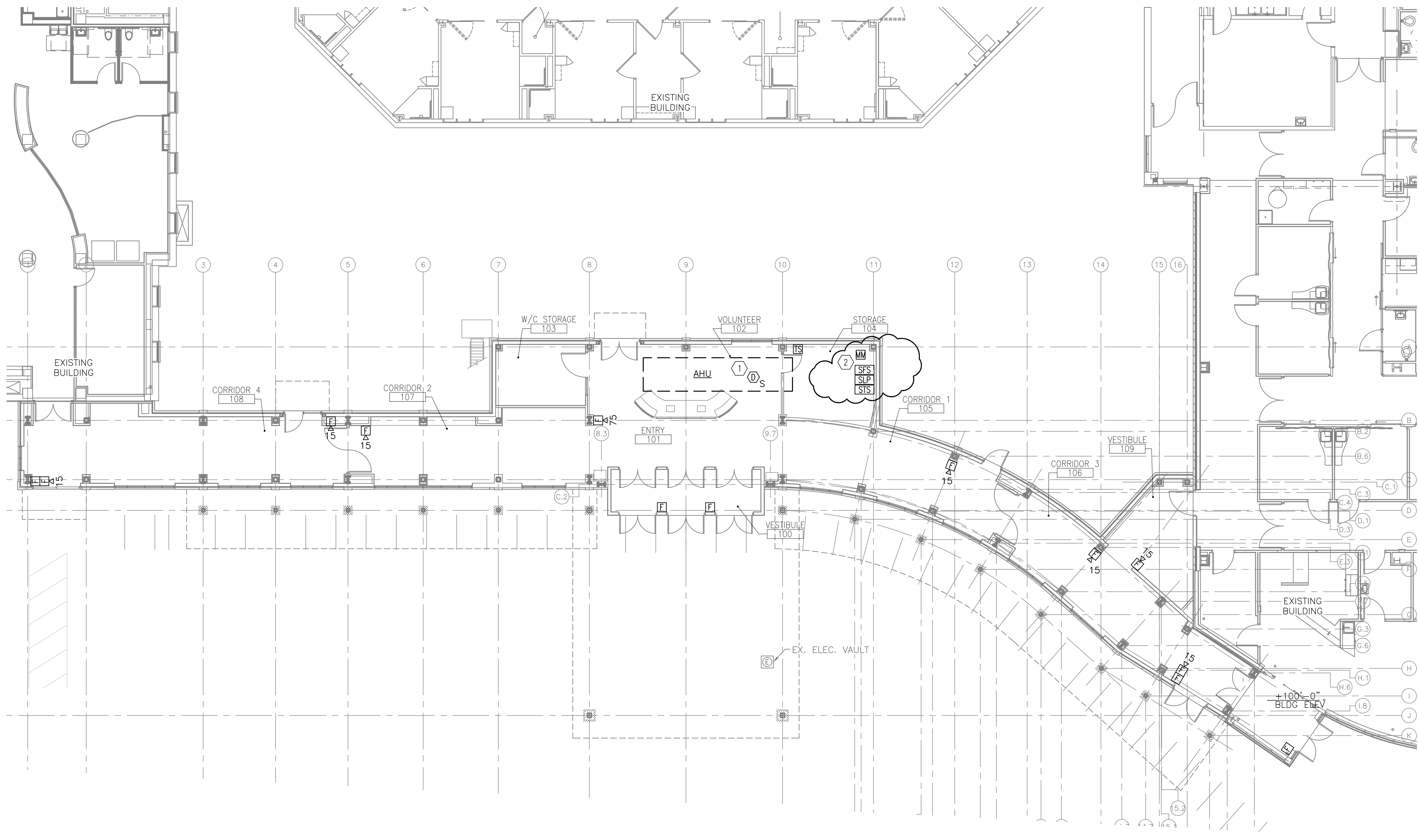


INPUT DEVICE:	OUTPUT:						
	SOUND GENERAL BUILDING ALARM	NOTIFY FIRE DEPARTMENT	INITIATE SUPERVISORY SIGNAL	CLOSE DAMPERS	SHUT DOWN AIR HANDLER OR FAN	CLOSE SMOKE BARRIER DOORS ON THE FLOOR	OPEN LOCKED EGRESS DOORS ON THE FLOOR
MANUAL PULL STATION	X	X				X	X
DUCT SMOKE DETECTOR			X	X	X		

A1 FIRE ALARM INPUT/OUTPUT MATRIX
NOT TO SCALE



A3 FIRE ALARM RISER DIAGRAMS
NOT TO SCALE



F1 FIRST FLOOR PLAN
1/8" = 1'-0"

CONSULTANTS:		ARCHITECT/ENGINEERS:		Drawing Title: FIRE ALARM PLAN		Project Title: NEW FRONT ENTRANCE BUILDING 1		Office of Construction and Facilities Management	
AMENDMENT Revisions		PARADIGM ENGINEERS AND CONSTRUCTORS 200 Envoy Circle #201, Louisville KY 40299 - PH: 502.339.8511 - www.paradigmusa.com		Approved Project Director		Location: LEBANON VAMC 1700 SOUTH LINCOLN AVE, LEBANON PA 17042-7829		Project Number: 595-11-125 Building Number: 1 Drawing Number: 1.FA101	
04-22-14 Date						Date: 06-28-2013 Checked: BVG Drawn: KLP		Department of Veterans Affairs	