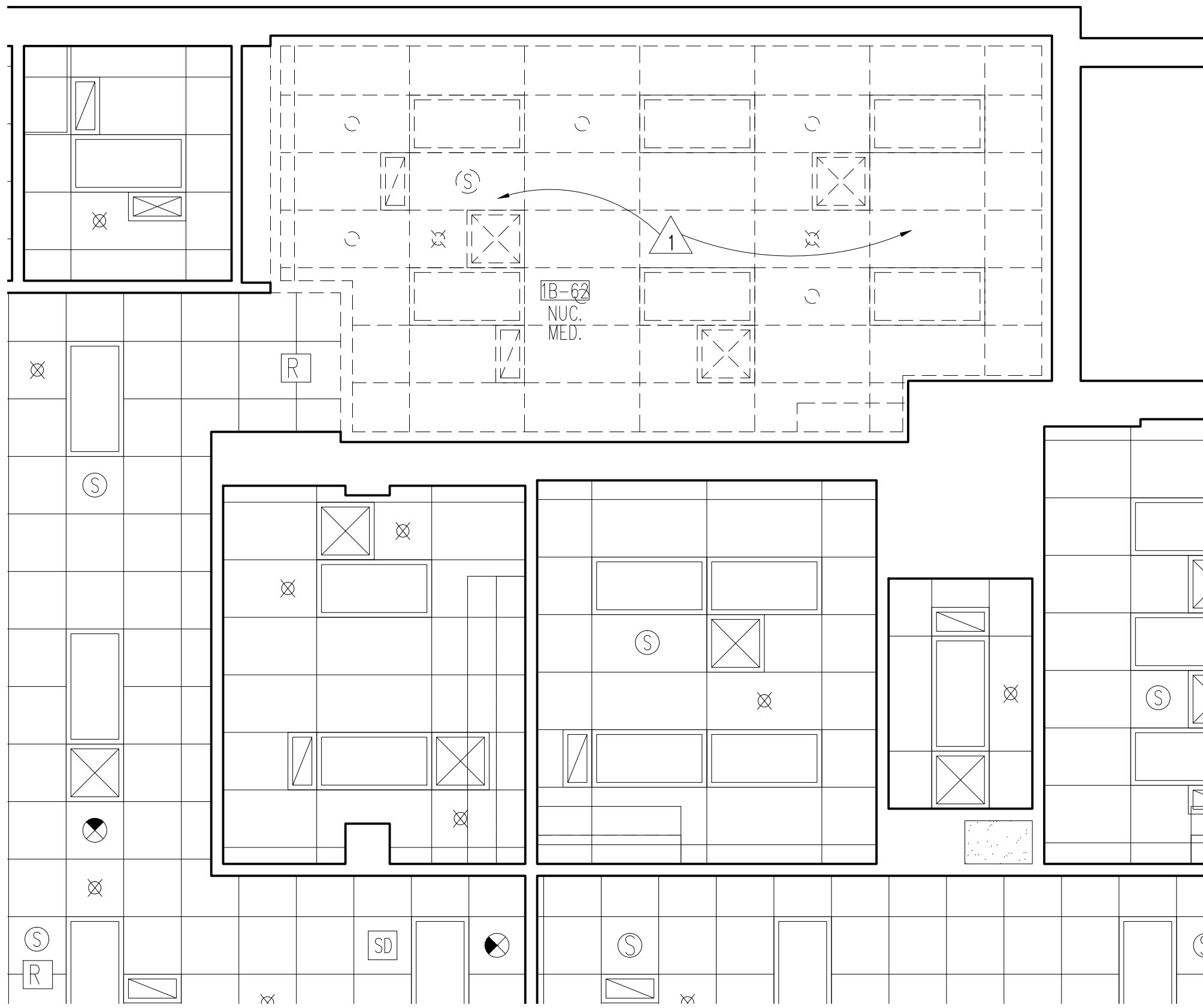


DEMOLITION PLAN
1/4"=1'-0"



REFLECTED CEILING DEMOLITION PLAN
1/4"=1'-0"

DEMOLITION NOTES

GENERAL

- REFER TO MECHANICAL DRAWINGS FOR RELATED DEMOLITION OF MECHANICAL CONSTRUCTION.
- REFER TO ELECTRICAL DRAWINGS FOR RELATED DEMOLITION OF ELECTRICAL CONSTRUCTION.
- DISPOSE OF ALL ITEMS NOT SALVAGED BY OWNER.
- MAINTAIN ACCESS TO ALL EXITS DURING CONSTRUCTION.

DEMOLITION SYMBOLS LEGEND

NOTE: ALL FURNISHINGS AND EQUIPMENT TO BE REMOVED BY OWNER UNLESS INDICATED OTHERWISE. VERIFY AND DISPOSE OF ALL ITEMS NOT SALVAGED BY OWNER.

--- DEMOLITION AS INDICATED

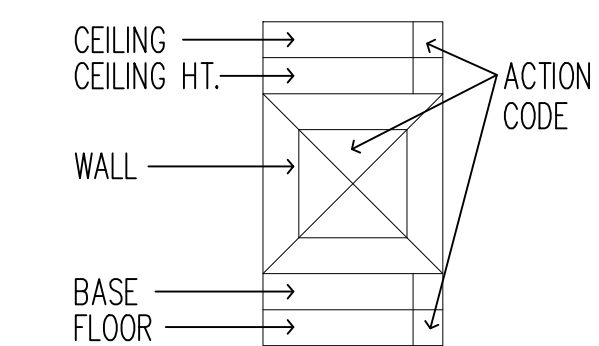
- REMOVE MODULAR WORKSURFACE, WALLSTRIPS, SUPPORTS AND PEDESTAL FILES. SALVAGE FOR REINSTALLATION.
- REMOVE MODULAR OVERHEAD BIN W/ TACKBOARD & TASKLIGHT. SALVAGE FOR REINSTALLATION.
- REMOVE WALL PARTITION.
- REMOVE FURRING/CHASE PARTITION. EXISTING TO REMAIN UNDER DEDUCT ALTERNATE NO. 1.
- REMOVE DOOR, FRAME & HARDWARE.
- REMOVE INTERIOR AND EXTERIOR WINDOW SASHES AND CAST PLASTIC WINDOW SILL. FRAME REMAINS. TURN SASHES OVER TO OWNER, OR DISPOSE OF IF REQUESTED BY OWNER.
- REMOVE PLUMBING ACCESSORIES. SALVAGE FOR REINSTALLATION.
- REMOVE MILLWORK. SALVAGE FOR REINSTALLATION.
- REMOVE TASK CHAIR. SALVAGE FOR REINSTALLATION.
- EMPLOY SERVICES OF MANUFACTURER OR APPROVED REPRESENTATIVE TO REMOVE NUCLEAR MEDICINE EQUIPMENT (INCLUDING SUPPORT STRUCTURE); TURN EQUIPMENT OVER TO OWNER. DISPOSE OF SUPPORT STRUCTURE.
- PATCH VOIDS AT REMOVED FLOOR BOXES, EQUIPMENT ANCHORS AND ABANDONED CONDUIT PENETRATIONS WITH GYPCRETE; LEVEL WITH EXISTING FLOOR.
- REMOVE PORTION OF WALL PROTECTION AS REQUIRED.
- REMOVE SIGNAGE. SALVAGE FOR REINSTALLATION.

FINISH ABBREVIATIONS

- ACT - ACOUSTIC CEILING TILE
- GWB - GYPSUM WALL BOARD
- P - PAINT
- SV - SHEET VINYL
- VN - VINYL BASE
- VCT - VINYL COMPOSITE TILE
- VWC - VINYL WALL COVERING

ACTION CODE

- EXISTING FINISH REMAINS - PATCH TO MATCH WHERE DAMAGED BY DEMOLITION.
- REMOVE WALL FINISH ONLY. EXISTING PARTITION REMAINS.
- EXISTING PARTITION OR FURRING TO BE REMOVED AT AREAS DESIGNATED AS DASHED LINES.
- REMOVE EXISTING FINISH.



PARTITION TYPE LEGEND

GENERAL:

- PROVIDE ACOUSTICAL SEAL AT INTERSECTION WITH DECK OR WALLS AND DUCT, PIPE AND CONDUIT PENETRATIONS TYPICAL.
 - PROVIDE FIRE/SMOKE SEAL WHERE RATED WALLS ARE INDICATED AND AT CORRIDOR WALLS. PROVIDE TWO 5/8" TYPE 'X' LAYERS GWB EA. SIDE WHERE 2 HOUR RATING IS INDICATED.
- (A) GWB/METAL STUD PARTITION. LEAD-LINED 5/8" TYPE 'X' GWB 1 SIDE; AND LEAD-LINED 5/8" TYPE 'X' GWB WITH 1/2" TYPE 'X' GWB OTHER SIDE OF 3 5/8" METAL STUD AT 16" O.C. WITH FULL THICKNESS ROCK WOOL INSULATION IN CAVITY. EXTEND TO UNDERSIDE OF DECK OR GWB SOFFIT ABOVE. PROVIDE VAPOR BARRIER BEHIND GWB AT EXTERIOR WALLS. UNDER DEDUCT ALTERNATE BID NO. 1, EXISTING CHASE AND FURRED WALLS REMAIN. LAMINATE LEAD-LINED 5/8" TYPE 'X' GWB TO FACE OF EXISTING WALL.

- (B) CHASE OR FURRED WALL, LEAD-LINED 5/8" TYPE 'X' GWB ON EXPOSED FACE OF 3 5/8" METAL STUDS AT 16" O.C., WITH FULL THICKNESS ROCK WOOL INSULATION IN CAVITY. EXTEND TO UNDERSIDE OF DECK OR GWB SOFFIT ABOVE. PROVIDE VAPOR BARRIER BEHIND GWB AT EXTERIOR WALLS. UNDER DEDUCT ALTERNATE BID NO. 1, EXISTING CHASE AND FURRED WALLS REMAIN. LAMINATE LEAD-LINED 5/8" TYPE 'X' GWB TO FACE OF EXISTING WALL.

--- 3MM LEAD RADIATION SHIELDING OR EQUIVALENT AT WALLS OR OPENINGS, 7' HIGH. PROVIDE TESTING AND CERTIFICATION BY A REGISTERED MEDICAL PHYSICIST.

♦♦♦♦ NON-COMBUSTIBLE TEMPORARY CONSTRUCTION BARRIER. PROVIDE CONSTRUCTION ACCESS DOORS IN BARRIER AT LOCATIONS TO BE DETERMINED BY VA AND CONTRACTOR.

CEILING NOTES

GENERAL

- REFER TO MECHANICAL DRAWINGS FOR RELATED MECHANICAL DEMOLITION.
- REFER TO ELECTRICAL DRAWINGS FOR RELATED ELECTRICAL DEMOLITION.
- CEILINGS IN SPACES OPEN TO PUBLIC MUST BE REPLACED IMMEDIATELY FOLLOWING DEMOLITION AND RELATED CONSTRUCTION.

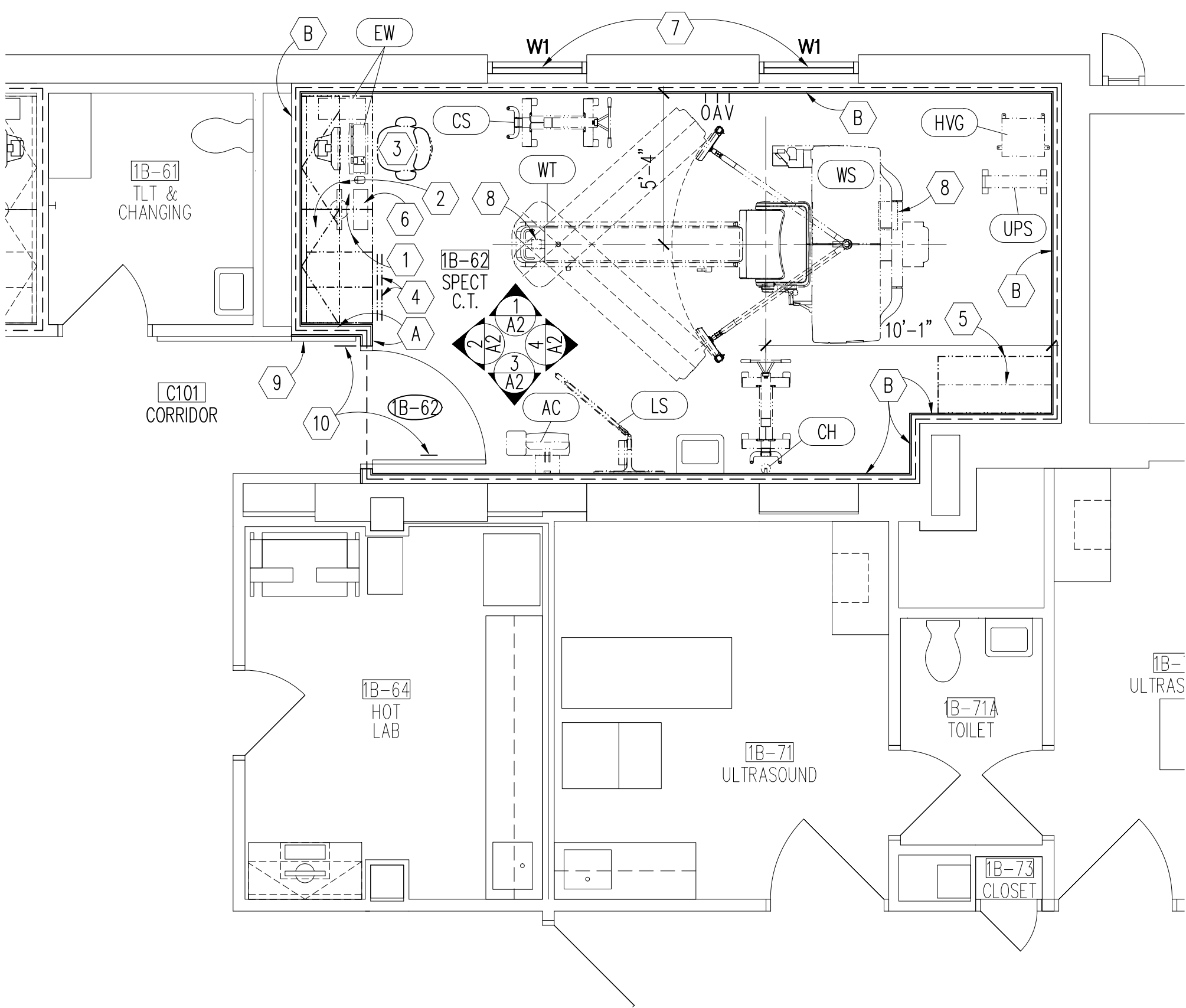
CEILING PLAN DEMOLITION LEGEND

- (A) REMOVE SUSPENDED A.T. CEILING. EXISTING CEILING TO REMAIN UNDER DEDUCT ALTERNATE BID NO. 1.

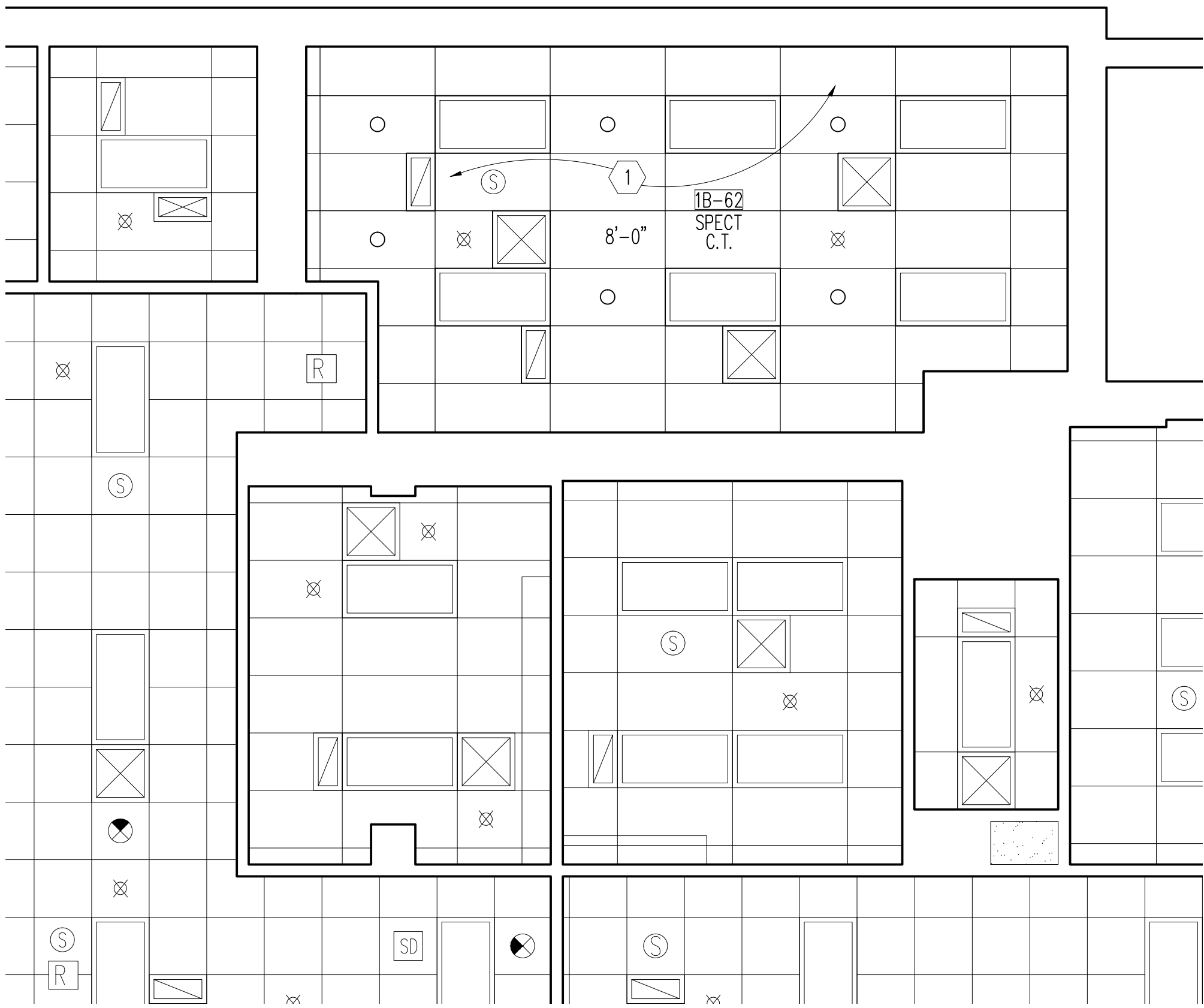
CEILING SYMBOLS LEGEND

--- CEILING DEMOLITION AS INDICATED

- 2'-0" x 4'-0" CEILING GRID
- 2'-0" x 2'-0" CEILING GRID
- RECESSED FLUORESCENT LIGHT FIXTURE
- DOWN LIGHT FIXTURE
- SPRINKLER
- SMOKE OR TEMPERATURE DETECTOR
- SPEAKER
- WIRELESS ROUTER
- EXIT
- SUPPLY GRILLE, CEILING DIFFUSER
- RETURN AIR GRILLE



REMODELING PLAN
1/4"=1'-0"



REFLECTED CEILING PLAN
1/4"=1'-0"

REMODELING NOTES

GENERAL

- REFER TO MECHANICAL DRAWINGS FOR RELATED MECHANICAL CONSTRUCTION.
- REFER TO ELECTRICAL DRAWINGS FOR RELATED ELECTRICAL CONSTRUCTION.

EQUIPMENT/FURNISHINGS LEGEND

- REINSTALL SALVAGED MODULAR WORKSURFACE, WALLSTRIPS & SUPPORTS (VC)
- REINSTALL SALVAGED MODULAR OVERHEAD BIN W/ TACKBOARD & TASKLIGHT (VC)
- REINSTALL SALVAGED TASK CHAIR (VC)
- PEDESTAL FILE (VC)
- REINSTALL SALVAGED MILLWORK (VC)
- THIN CLIENT (VV)
- SPANDREL WINDOW. SEE DETAILS 5/A2 & 6/A2.
- SAW-CUT EXISTING CONCRETE FLOOR TO PROVIDE FOR RECESSED FLOOR BOX FLUSH WITH TOP OF SLAB. SEE ELECTRICAL DRAWINGS FOR SPECIFIC FLOOR BOX LOCATION AND SIZE. SEE SHEET A2 FOR REQUIRED STRUCTURAL SUPPORT. NOISE OF DEMOLITION REQUIRES RESTRICTED WORK TIMES TO BE CLOSELY COORDINATED WITH VA.
- PATCH TO MATCH EXISTING WALL PROTECTION AS REQUIRED.
- REINSTALL SALVAGED SIGNAGE. ROOM SIGN PAPER INSERT TO BE REPLACED WITH REVISED ROOM NAME BY OWNER.

SPECT CT SCAN

NEW OWNER-FURNISHED AND INSTALLED EQUIPMENT

- AC - ACQUISITION TERMINAL (ON CART) (VV)
- CH - CALIBRATION SOURCE HOLDER (DUAL DETECTOR) (VV)
- CS - COLLIMATOR STORAGE CART (VV)
- EW - EXTENDED BRILLIANCE WORKSPACE (VV)
- HVG - HIGH VOLTAGE GENERATOR (VV)
- UPS - 5 KVA UNINTERRUPTIBLE POWER SUPPLY (VV)
- WS - BRIGHTVIEW SYSTEM (WITHOUT COLLIMATORS) (VV)
- WT - PATIENT TABLE (VV)
- LS - LEAD SHIELD (VV)

CEILING NOTES

GENERAL:

- REFER TO MECHANICAL DRAWINGS FOR RELATED MECHANICAL WORK.
- REFER TO ELECTRICAL DRAWINGS FOR RELATED ELECTRICAL WORK.
- CEILINGS IN SPACES OPEN TO PUBLIC MUST BE REPLACED IMMEDIATELY FOLLOWING DEMOLITION AND RELATED CONSTRUCTION.

CEILING LEGEND

- (1) NEW ACOUSTICAL CEILING TILE & GRID. ADJUST HEIGHT OF EXISTING SPRINKLERS TO REMAIN AS REQUIRED FOR CEILING WORK. EXISTING CEILING TO REMAIN UNDER DEDUCT ALTERNATE BID NO. 1.

CEILING SYMBOLS LEGEND:

- 2'-0" x 4'-0" CEILING GRID
- 2'-0" x 2'-0" CEILING GRID
- RECESSED FLUORESCENT LIGHT FIXTURE
- DOWN LIGHT FIXTURE
- SPRINKLER
- SMOKE OR TEMPERATURE DETECTOR
- SPEAKER
- WIRELESS ROUTER
- EXIT
- SUPPLY GRILLE, CEILING DIFFUSER
- RETURN AIR GRILLE



Dept. of Veterans Affairs
Health Care System
2101 Elm Street North
Fargo, ND 58102

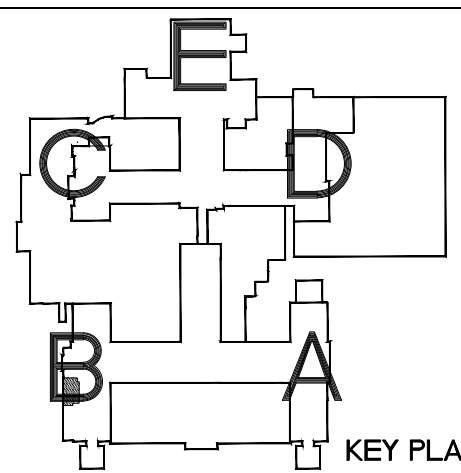


IMAGE GROUP INC.
403 CENTER AVENUE, SUITE 300
MOORHEAD, MN 56560

IMAGE GROUP INC. Architecture & Interiors
SOLEN & LARSON ENGINEERING, Structural Engineers
OBERMILLER NELSON ENGINEERING, Mechanical Engineers
MEN ENGINEERING, Electrical Engineers

I hereby certify that this plan specification, or report was prepared by me or under my direct supervision, and that I am duly Registered Architect under the laws of the State of North Dakota.

Date 3/7/2014 Reg. No. 378



Drawing Title
FIRST FLOOR DEMOLITION
AND REMODELING PLANS

VA Project No.

437-14-115

Building No.

9

Contract No.

VA263-P-1217

AutoCAD File Name

Plan_First.dwg

Project Title
SITE PREP FOR SPECT CT ROOM 1B-62

Designed By

RM

Location

FARGO VA HEALTH CARE SYSTEM
FARGO, ND

Checked By

RM

Drawn By

KS

Date
MARCH 7, 2014

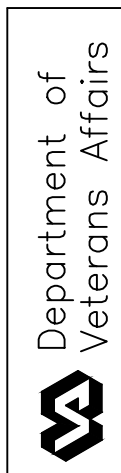
Scale

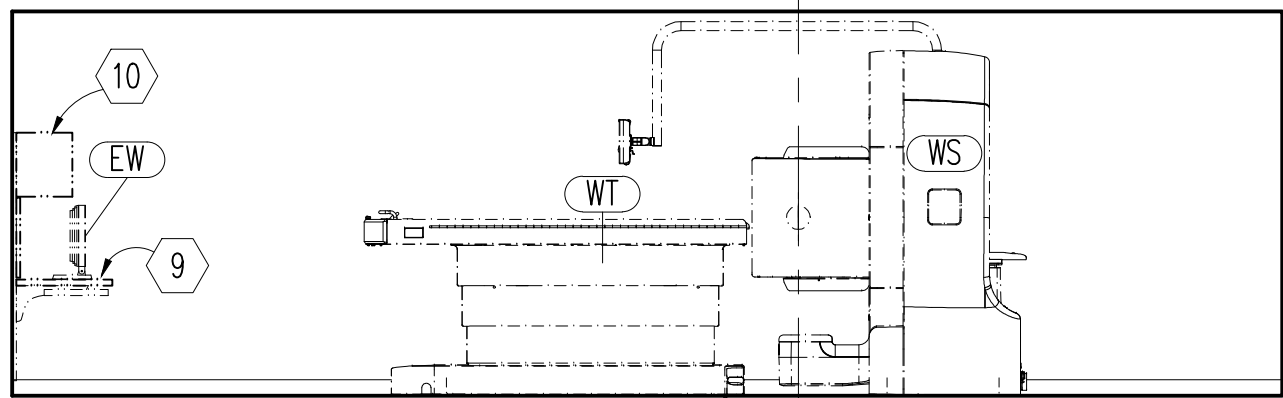
AS SHOWN

Drawing No.

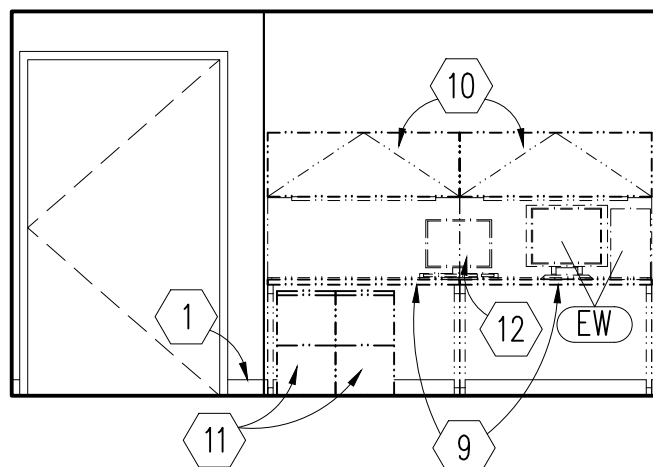
A1

Dwg 2 of 7

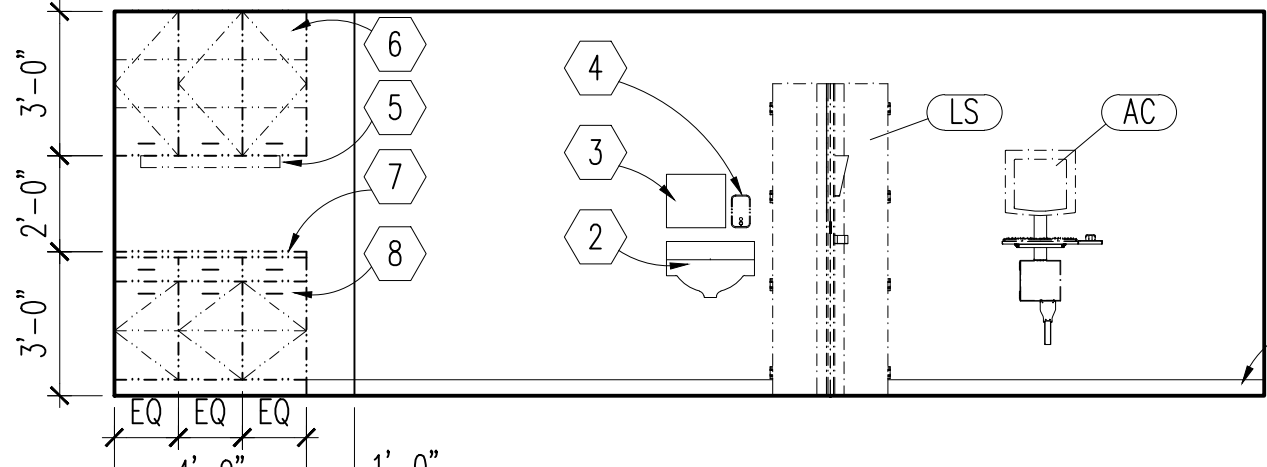




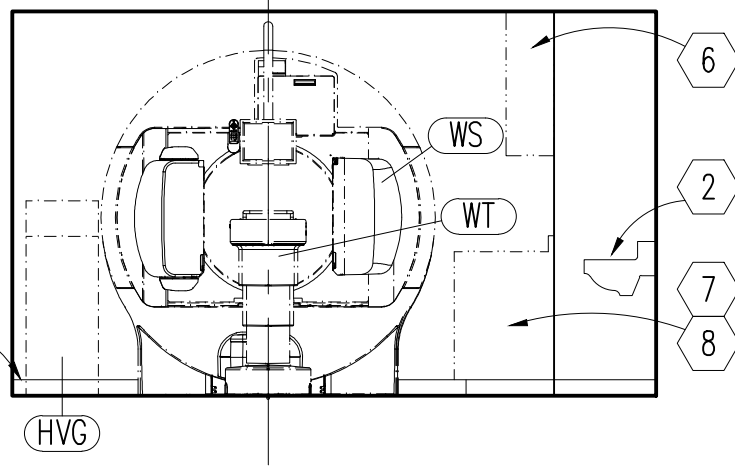
1 SPECT C.T. - 1B-62
A2 1/4"-1'-0" (NORTH ELEV.)



2 SPECT C.T. - 1B-62
A2 1/4"-1'-0" (WEST ELEV.)



3 SPECT C.T. - 1B-62
A2 1/4"-1'-0" (SOUTH ELEV.)



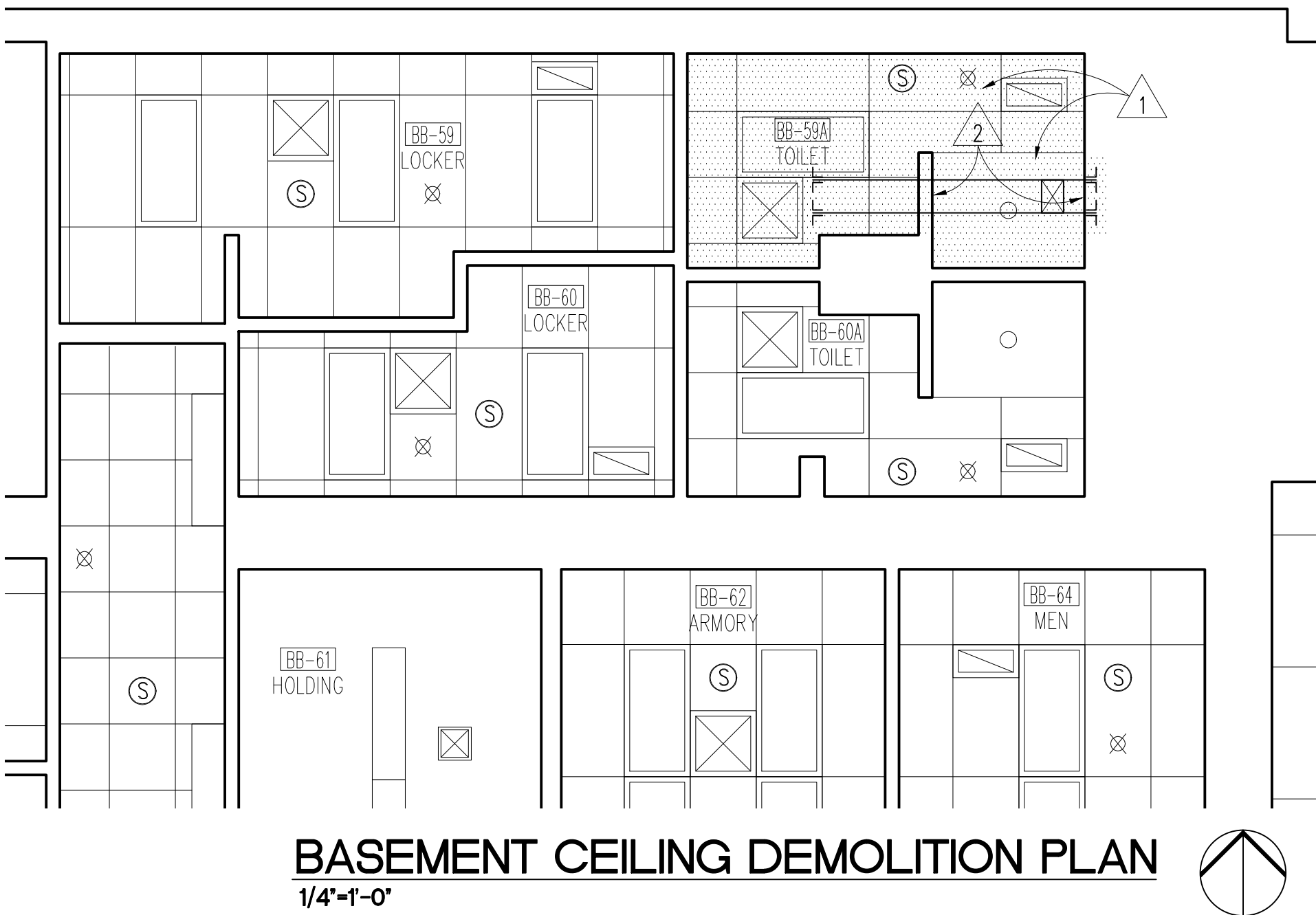
4 SPECT C.T. - 1B-62
A2 1/4"-1'-0" (EAST ELEV.)

ELEVATION NOTES LEGEND:

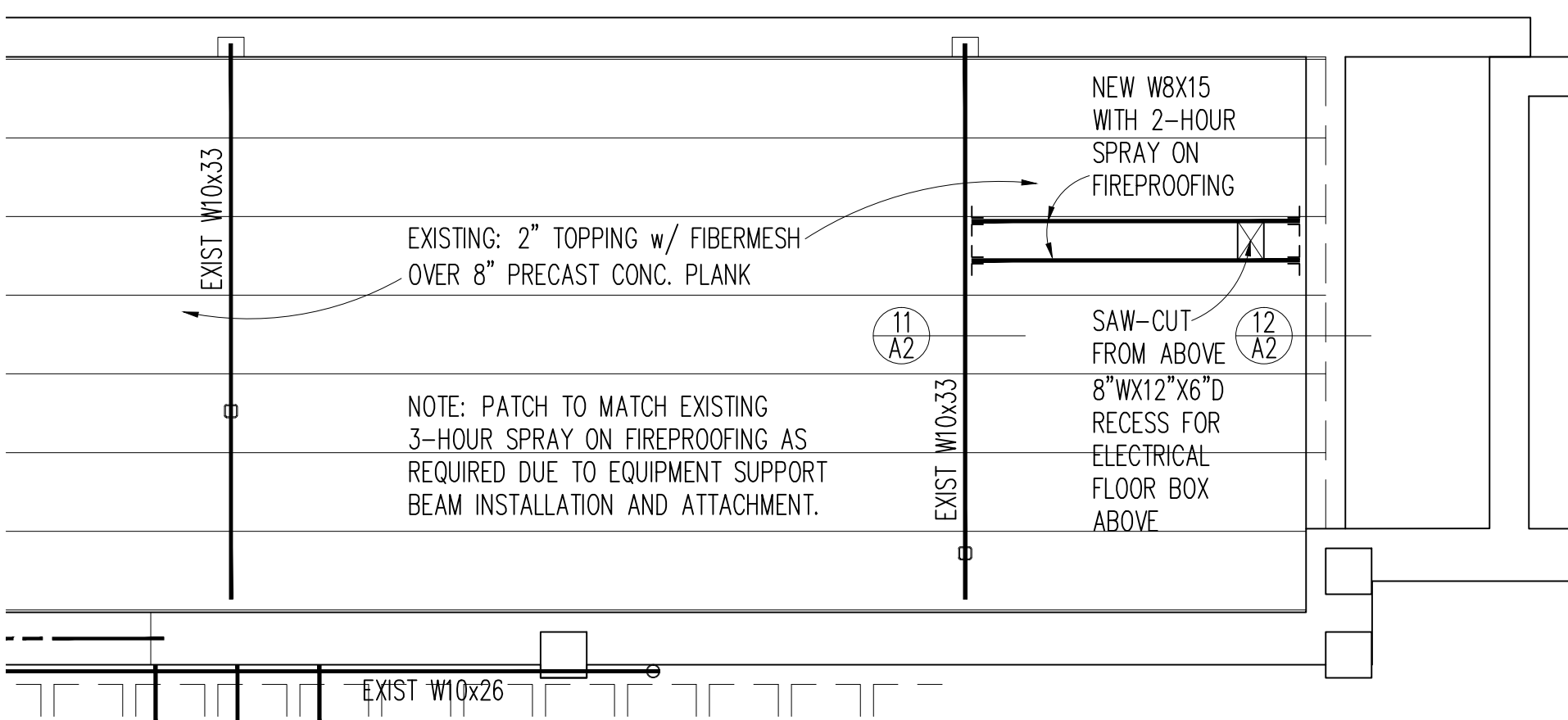
- 1 BASE. SEE ROOM FINISH SCHEDULE.
- 2 SINK. SEE MECHANICAL DRAWINGS.
- 3 REINSTALL SALVAGED PAPER TOWEL DISPENSER (VC)
- 4 REINSTALL SALVAGED SOAP DISPENSER (VC)
- 5 LIGHT FIXTURE. SEE ELECTRICAL DRAWINGS.
- 6 REINSTALL SALVAGED PLASTIC LAMINATE WALL CABINET (VC)
- 7 REINSTALL PLASTIC LAMINATE COUNTERTOP (VC)
- 8 REINSTALL PLASTIC LAMINATE BASE CABINET (VC)
- 9 REINSTALL SALVAGED MODULAR WORKSURFACE, WALLSTRIPS & SUPPORTS (VC)
- 10 REINSTALL SALVAGED MODULAR OVERHEAD BIN W/ TACKBOARD & TASKLIGHT (VC)
- 11 REINSTALL SALVAGED PEDESTAL FILE (VC)
- 12 THIN CLIENT (VV)

SPECT CT SCAN EQUIPMENT LEGEND:

- NEW OWNER-FURNISHED AND INSTALLED EQUIPMENT
- AC ACQUISITION TERMINAL (ON CART) (VV)
 - CH CALIBRATION SOURCE HOLDER (DUAL DETECTOR) (VV)
 - CS COLLIMATOR STORAGE CART (VV)
 - EW EXTENDED BRILLIANCE WORKSPACE (VV)
 - HVG HIGH VOLTAGE GENERATOR (VV)
 - UPS 5 KVA UNINTERRUPTIBLE POWER SUPPLY (VV)
 - WS BRIGHTVIEW SYSTEM (WITHOUT COLLIMATORS) (VV)
 - WT PATIENT TABLE (VV)
 - LS LEAD SHIELD (VV)



BASEMENT CEILING DEMOLITION PLAN
1/4"-1'-0"



FIRST FLOOR EQUIPMENT SUPPORT PLAN
1/4"-1'-0"

CEILING DEMOLITION NOTES LEGEND:

GENERAL

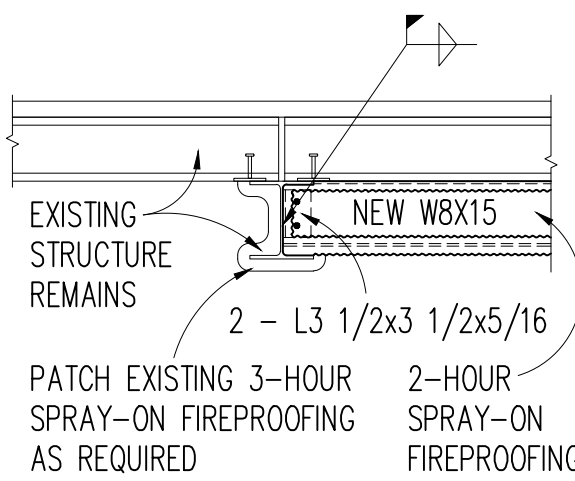
1. AREA IS OCCUPIED 24 HOURS/DAY. ALL WORK MUST BE COMPLETED IN A SINGLE DAY.

CEILING PLAN DEMOLITION LEGEND

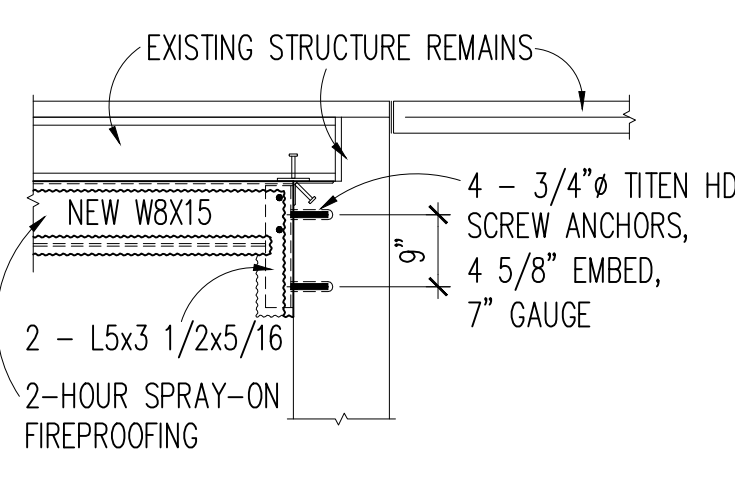
- 1 REMOVE EXISTING A.T. CEILING, GWB CEILING, AND FIXTURES AS REQUIRED IN AREA INDICATED BY SHADING TO INSTALL STRUCTURAL FLOOR SUPPORT ABOVE. SEE MECH. DRAWINGS FOR RELATED DUCTWORK REVISIONS.
- 2 CUT OPENING IN GWB PARTITION AS REQUIRED; PATCH TO MATCH EXISTING FINISH.

CEILING SYMBOLS LEGEND

- 2'-0" x 4'-0" CEILING GRID
- 2'-0" x 2'-0" CEILING GRID
- RECESSED FLUORESCENT LIGHT FIXTURE
- SPRINKLER
- SPEAKER
- EXIT
- SUPPLY GRILLE, CEILING DIFFUSER
- RETURN AIR GRILLE



11 SUPPORT BEAM DETAIL
A2 1/2"-1'-0"



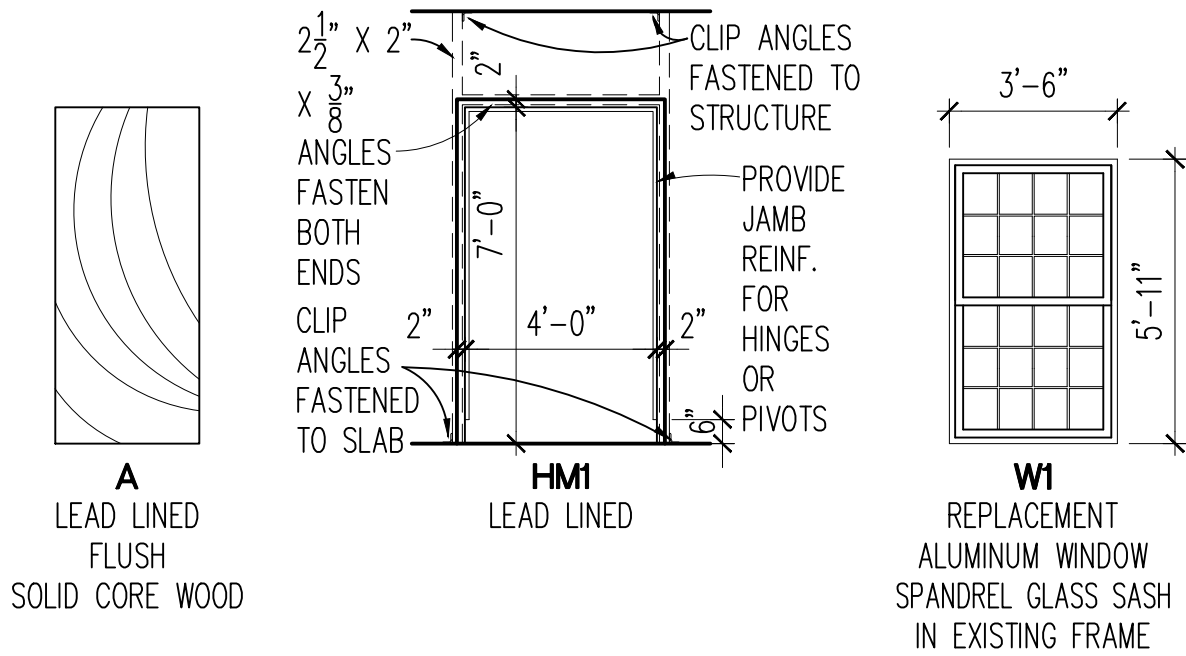
12 SUPPORT BEAM DETAIL
A2 1/2"-1'-0"

ROOM FINISH SCHEDULE

ROOM	FLOOR	BASE	WALLS	CEILING	REMARKS
NO.	NAME	SHEET VINYL EXISTING	SHEET VINYL EXISTING	PAINT EXISTING	A.C.T. EXISTING
1B-62	SPECT C.T.				
C101	CORRIDOR				

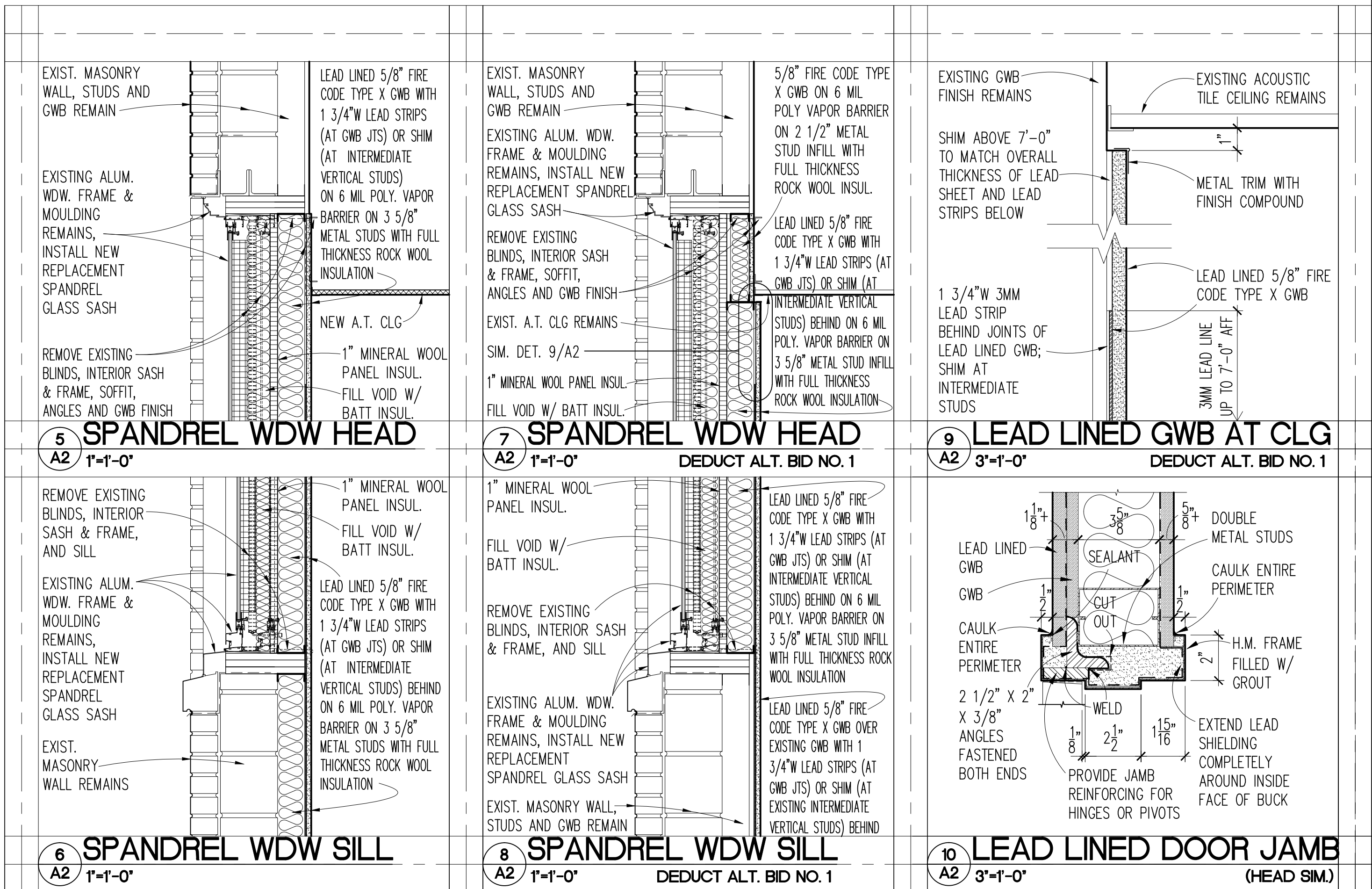
DOOR SCHEDULE

NO.	DOOR SIZE	TYPE	ELEV FRAME	DETAIL	GROUP HDWR	LABEL	REMARKS
1B-62	4-0 x 7-0 x 1-3/4	A	HM1	10/A2	T3L		LEAD LINED DOOR/FRAME



DOOR, H.M. FRAME AND WINDOW ELEVATIONS

1/4"-1'-0"



Dept. of Veterans Affairs
Health Care System
2101 Elm Street North
Fargo, ND 58102



IMAGE GROUP INC.
403 CENTER AVENUE, SUITE 300
MOORHEAD, MN 56560

IMAGE GROUP INC., Architecture & Interiors
SOLEN & LARSON ENGINEERING, Structural Engineers
OBERMILLER NELSON ENGINEERING, Mechanical Engineers
MEN ENGINEERING, Electrical Engineers

I hereby certify that this plan specification, or report was prepared by me or under my direct supervision, and that I am duly Registered Architect under the laws of the State of North Dakota.

Date 3/7/2014 Reg. No. 378

Drawing Title
SCHEDULES, INTERIOR ELEVATIONS, DETAILS,
BASEMENT CEILING DEMOLITION AND FIRST
FLOOR EQUIPMENT SUPPORT PLANS

VA Project No.

437-14-115

Building No.

9

Contract No.

VA263-P-1217
VA263-C-

AutoCAD File Name

Plan_First.dwg

Project Title
SITE PREP FOR SPECT CT ROOM 1B-62

Designed By

RM

Checked By

RM

Drawn By

KS

Local

FARGO VA HEALTH CARE SYSTEM
FARGO, ND

Date
MARCH 7, 2014

Scale
AS SHOWN

Drawing No.

A2

Dwg 3 of 7

Department of Veterans Affairs