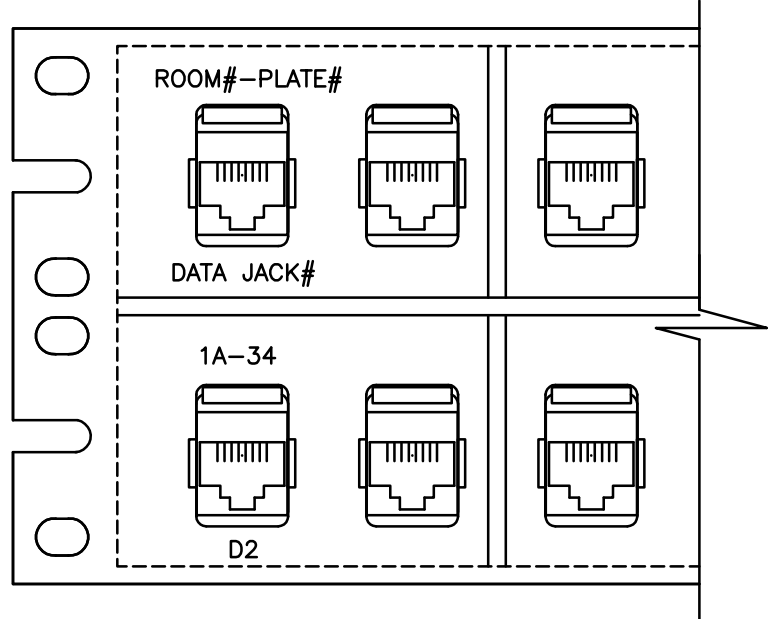
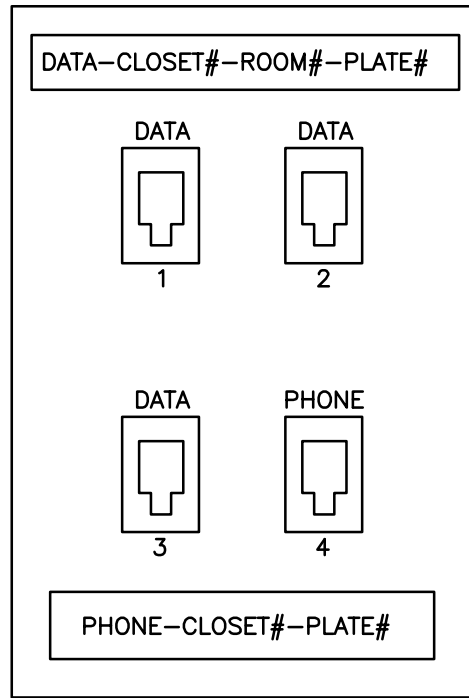


ELECTRICAL SYMBOLS LEGEND	
SYMBOLS	DESCRIPTION
	DASHED LINES INDICATE EXISTING FIXTURES, DEVICES, OR EQUIPMENT
	RECESSED FLUORESCENT
	FIXTURE CONNECTED TO EMERGENCY LIFE SAFETY POWER
	RECESSED CEILING MOUNTED LIGHT FIXTURE
	WALL MOUNTED LIGHT FIXTURE
	SINGLE POLE LIGHT SWITCH
	DIMMER (600 WATT UNLESS OTHERWISE NOTED)
	DUPLEX RECEPTACLE ("C" INDICATES EMERGENCY CRITICAL BRANCH POWER)
	DOUBLE DUPLEX RECEPTACLE ("C" INDICATES EMERGENCY CRITICAL BRANCH POWER)
	STROBE LIGHT
	COMBINATION COMPUTER/TELEPHONE OUTLET IN SINGLE GANG OPENING (NUMBER INDICATES QUANTITY OF CABLES AND JACKS, NO NUMBER INDICATES ONE)
	INTERCOM STATION
	CEILING MOUNTED RECESSED SPEAKER
	NURSE CALL CODE BLUE STATION, SINGLE GANG DEVICE
	NURSE CALL 4 BUTTON STAFF REGISTRATION, SINGLE GANG DEVICE
	NURSE CALL DOME LIGHT
	HOME RUN TO PANELBOARD, QUANTITY OF CONDUCTORS REQUIRED NOT INDICATED, PROVIDE QUANTITY AS REQUIRED FOR CIRCUIT NUMBERS SHOWN, SWITCHING ARRANGEMENT, OR NUMBER OF HOME RUNS SHOWN. #10 INDICATES WIRE SIZE. NO NUMBERS INDICATES #12, 3/4 INCH CONDUIT MINIMUM.



5 E1 PATCH PANEL SAMPLE LABELS  
NO SCALE

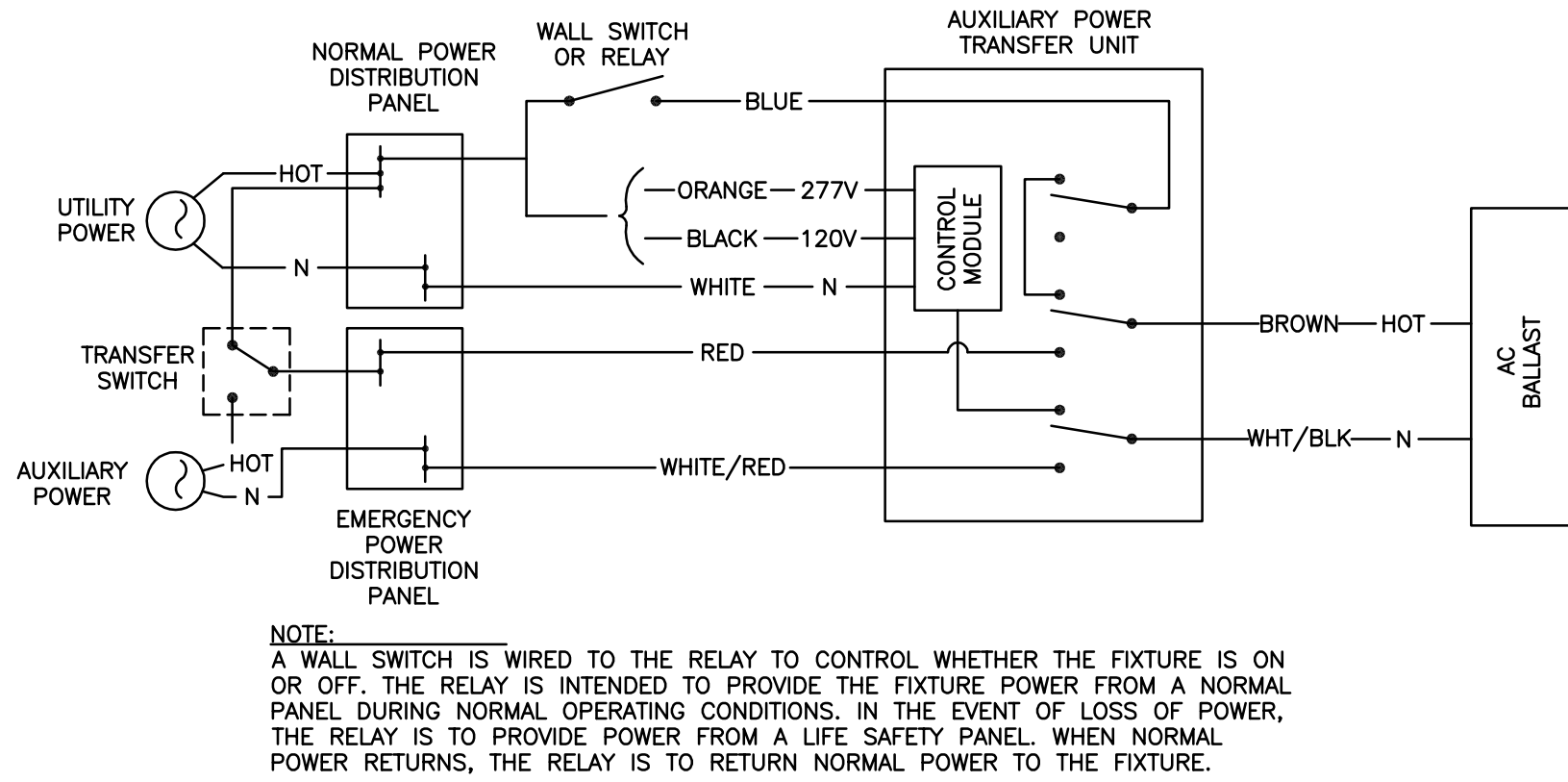


- NOTES:
1. (3) DATA, (1) PHONE JACK.
  2. SEE SECTION 27 10 05 FOR PLATE AND JACK REQUIREMENTS.
  3. DATA JACKS TO BE ORANGE COLOR, PHONE JACKS TO BE IVORY.
  4. PLATES ARE LABELED AS SHOWN. NUMBER PLATES ARE CLOCKWISE FROM THE DOOR.
  5. LABEL ALL VOICE AND DATA CABLES AT BOTH ENDS WITH "DATA CLOSET# - ROOM# - PLATE# - JACK#".
  6. ALL (4) JACKS TO BE CATEGORY 6e CABLES.
  7. DATA JACKS ARE NUMBERED LEFT TO RIGHT, TOP TO BOTTOM.

6 E1 TYPICAL COMMUNICATIONS DETAIL  
NO SCALE

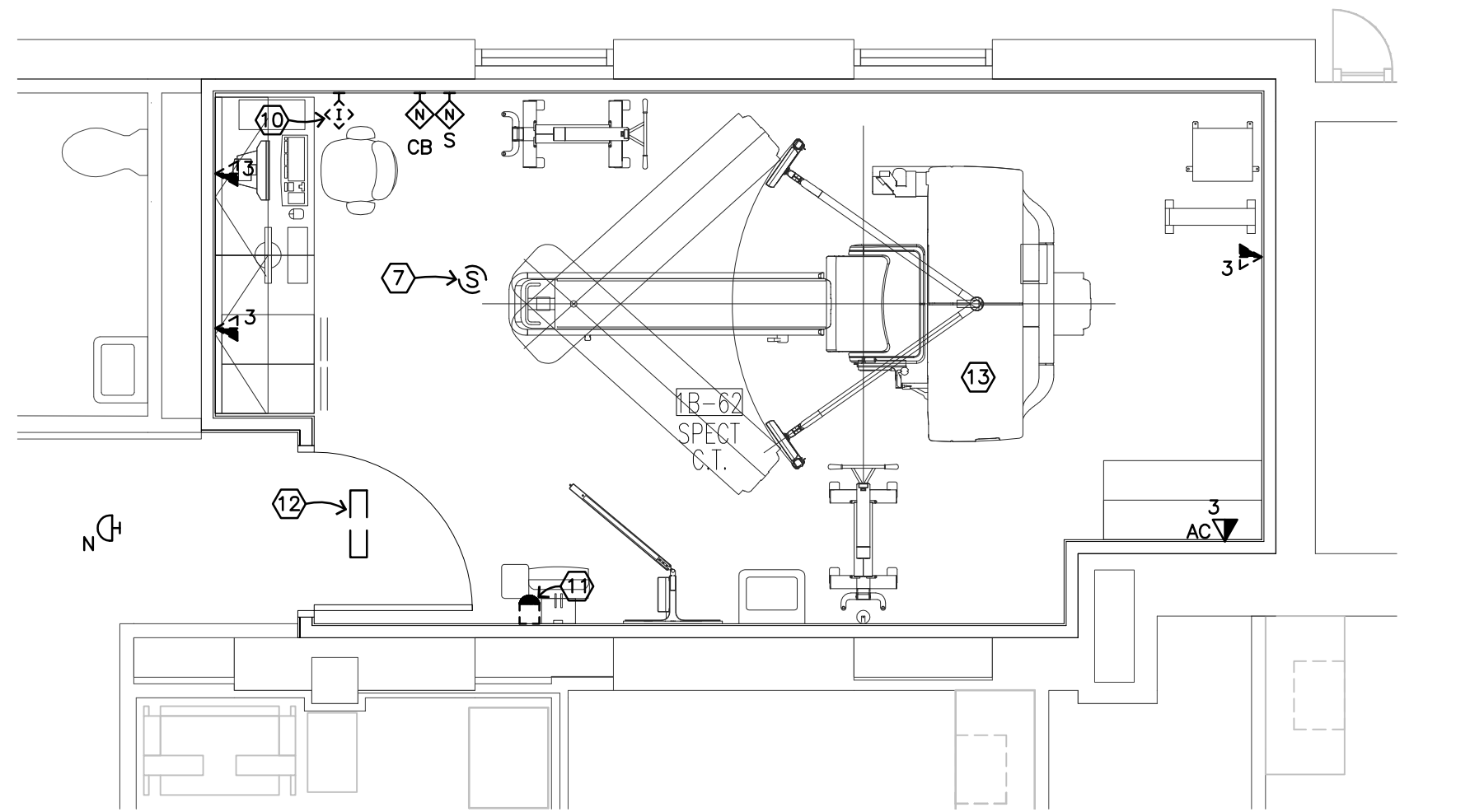
- DEMOLITION GENERAL NOTES:
1. ALL DEVICES AND EQUIPMENT SHOWN HATCHED TO BE REMOVED UNLESS NOTED OTHERWISE.
  2. ALL CONDUIT, BOXES AND CABLING ASSOCIATED WITH THE NUCLEAR MEDICINE MACHINE TO BE REMOVED.
  3. DELETE ALL WORK ASSOCIATED WITH THE REMOVAL AND REINSTALLATION OF ALL CEILING FIXTURES AND CEILING MOUNTED DEVICES UNDER REDUCT ALTERNATE BID 1.
  4. ALL DEVICES ON WALL NOT DEMOLISHED TO BE REMOVED TO ALLOW FOR WALL TO BE FURRED OUT AND LEAD LINING TO BE INSTALLED. REINSTALL ALL REMOVED DEVICES AND CONNECT TO EXISTING CIRCUITS, PROVIDE ADDITIONAL MUD AS REQUIRED FOR MOUNTING OF DEVICES.

- PLAN NOTES:
1. PROVIDE "X-RAY IN USE" LIGHT, LIGHT TO BE LITHONIA LE SERIES OR EQUAL. LETTERING TO READ "X-RAY IN USE", SINGLE FACE, SOLID, DIE-CAST ALUMINUM HOUSING, WHITE ALUMINUM FACING WITH WHITE HOUSING, RED LETTERING. SEE DETAIL 2/E2 FOR CONNECTION.
  2. CONNECT TO EXISTING LIGHT CIRCUIT IN ROOM, PANEL 91N2.
  3. CONNECT TO EXISTING 20A NORMAL POWER CIRCUIT IN ROOM.
  4. CONNECT TO EXISTING 20A CRITICAL POWER CIRCUIT IN ROOM.
  5. CONNECT FIXTURE SALVAGED DURING DEMOLITION.
  6. DISCONNECT AND REMOVE EXISTING FIXTURE/DEVICE AND SALVAGE FOR REINSTALLATION.
  7. CONNECT SALVAGED PAGING SPEAKER TO EXISTING PAGING ZONE.
  8. DISCONNECT POWER TO NUCLEAR MEDICINE GAMMA CAMERA. REMOVE NEMA L6-30 RECEPTACLE AND CONDUCTORS AND CONDUIT BACK TO PANEL 91N2.
  9. EMERGENCY LIGHTING RELAY, SEE DETAIL 7/E1.
  10. INSTALL AND RE-CONNECT SALVAGED MASTER INTERCOM STATION.
  11. INSTALL AND RE-CONNECT SALVAGED FIRE ALARM DEVICE TO EXISTING FIRE ALARM CIRCUIT.
  12. INSTALL AND RE-CONNECT SALVAGED CEILING MOUNT PATIENT ANNUNCIATOR.
  13. SEE SHEET E2 FOR INSTALLATION REQUIREMENTS OF NUCLEAR MEDICINE GAMMA CAMERA.

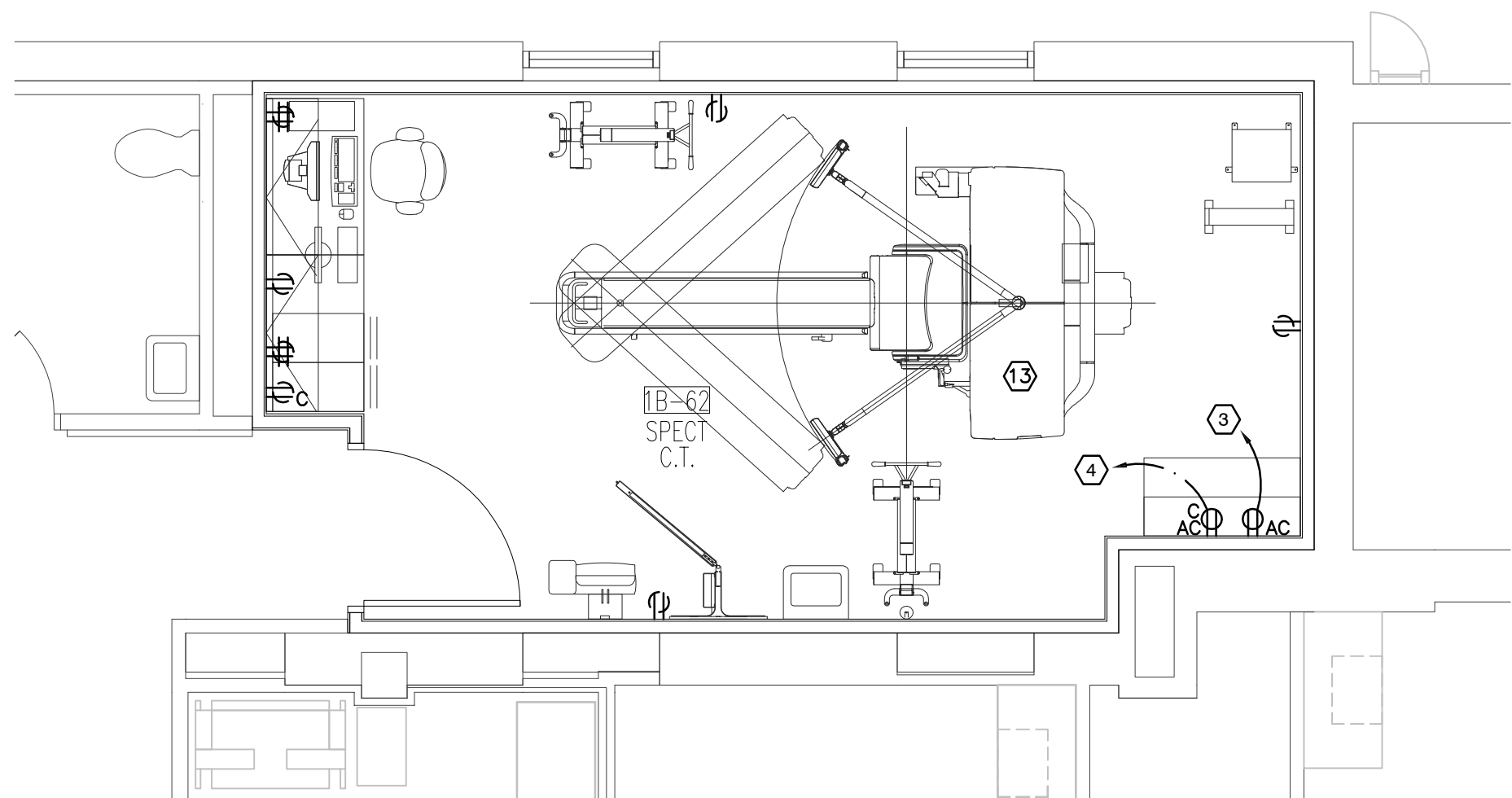


NOTE:  
A WALL SWITCH IS WIRED TO THE RELAY TO CONTROL WHETHER THE FIXTURE IS ON OR OFF. THE RELAY IS INTENDED TO PROVIDE THE FIXTURE POWER FROM A NORMAL PANEL DURING NORMAL OPERATING CONDITIONS. IN THE EVENT OF LOSS OF POWER, THE RELAY IS TO PROVIDE POWER FROM A LIFE SAFETY PANEL. WHEN NORMAL POWER RETURNS, THE RELAY IS TO RETURN NORMAL POWER TO THE FIXTURE.

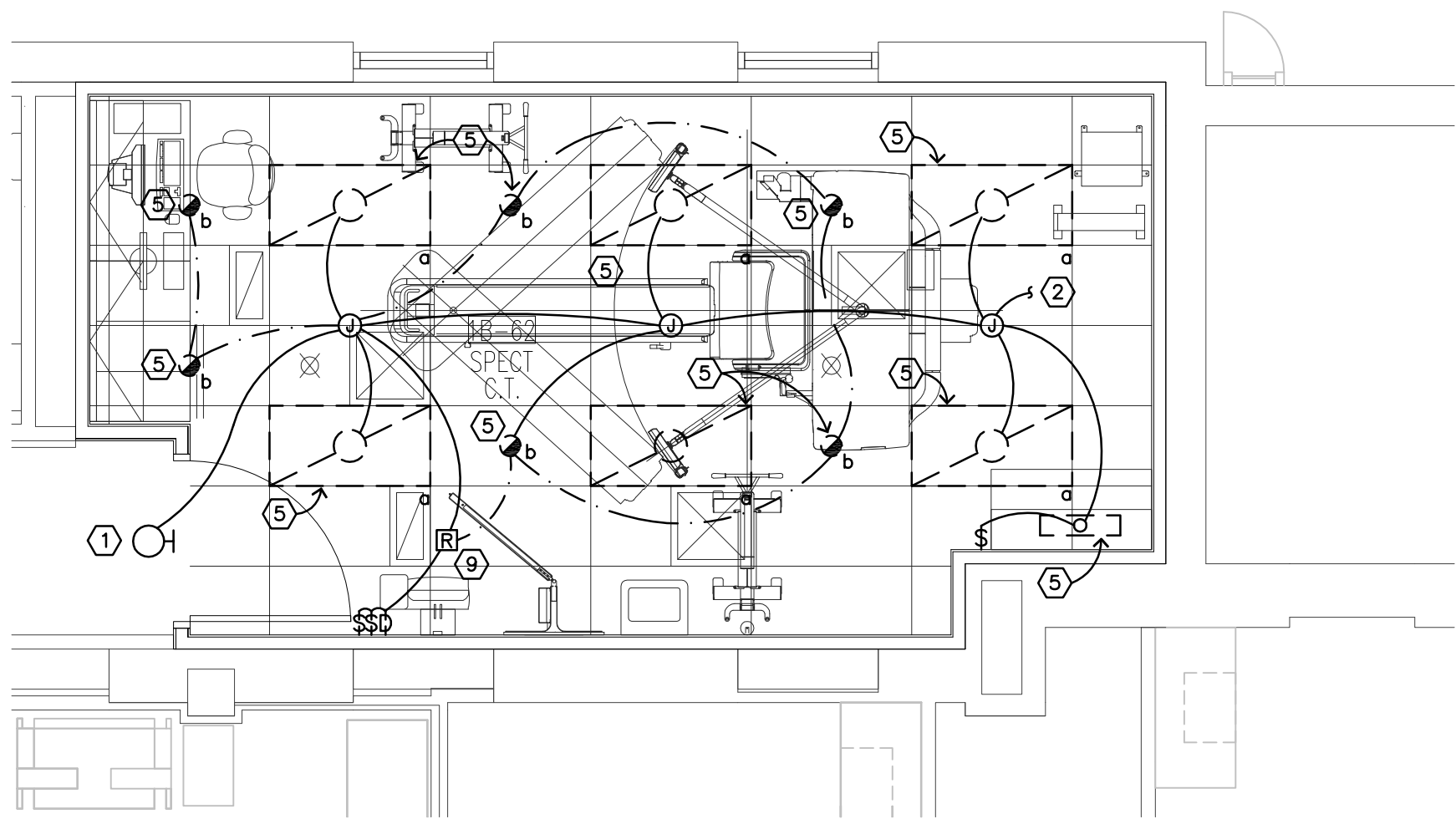
7 E1 EMERGENCY RELAY ONE-LINE DIAGRAM  
NO SCALE



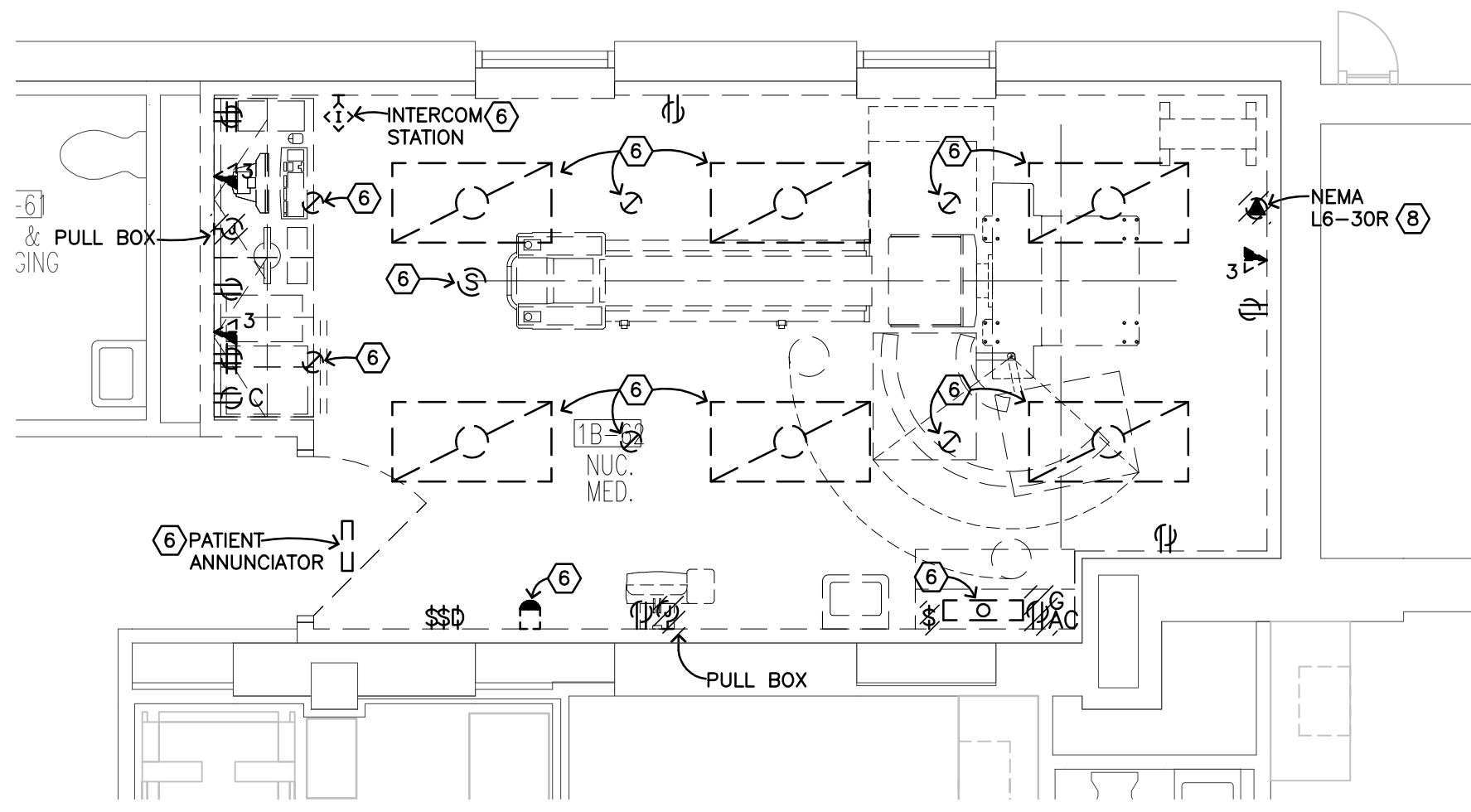
4 E1 FIRST FLOOR REMODELING PLAN - SYSTEMS



3 E1 FIRST FLOOR REMODELING PLAN - POWER



2 E1 FIRST FLOOR REMODELING PLAN - LIGHTING



1 E1 FIRST FLOOR DEMOLITION PLAN - ELECTRICAL



Dept. of Veterans Affairs  
Health Care System  
2101 Elm Street North  
Fargo, ND 58102

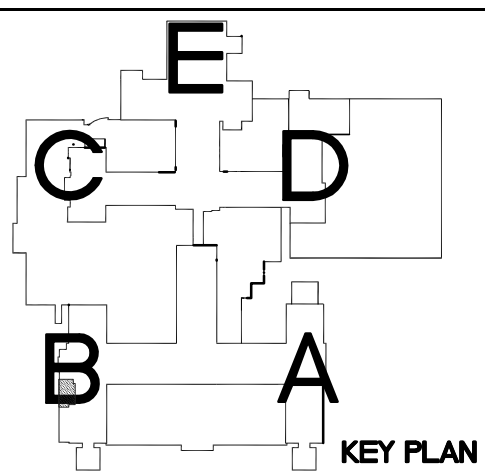


IMAGE GROUP INC.  
403 CENTER AVENUE, SUITE 300  
MOORHEAD, MN 56560

IMAGE GROUP INC., Architecture & Interiors  
SOLJEN & LARSON ENGINEERING, Structural Engineers  
OBERMILLER NELSON ENGINEERING, Mechanical Engineers  
MBN ENGINEERING, Electrical Engineers



MECHANICAL \* ELECTRICAL \* CIVIL  
303 7TH ST N, SUITE 200  
FARGO, ND 58102  
PHONE: 701.478.0330  
FAX: 701.478.0340



Drawing Title  
FIRST FLOOR DEMOLITION AND  
REMODELING PLANS -  
ELECTRICAL

VA Project No.  
437-14-115

Building No.  
9

Contract No.  
VA263-P-1217  
VA263-C-

AutoCAD File Name  
14-005 E1.dwg

Project Title  
SITE PREP FOR SPECT CT ROOM 1B-62

Designed By  
MB

Checked By  
MB

Drawn By  
TP

Location  
FARGO VA HEALTH CARE SYSTEM  
FARGO, ND

Date  
MARCH 7, 2014

Scale  
AS NOTED

Drawing No.  
E1

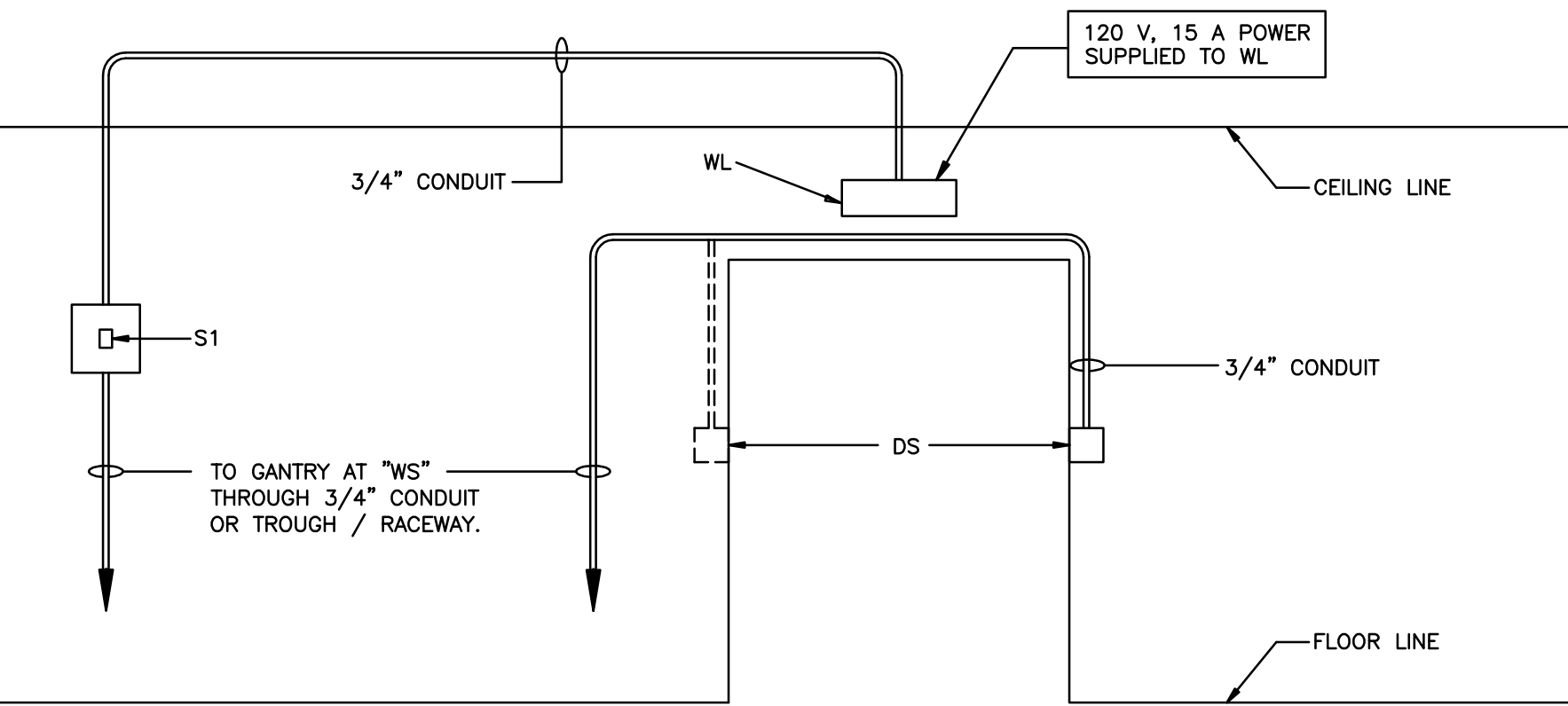
Dwg. 6 of 7



CONDUIT REQUIRED							
GENERAL NOTES							
1. ALL CONDUIT RUNS MUST TAKE MOST DIRECT ROUTE POINT TO POINT. 2. ALL CONDUIT RUNS MUST HAVE A PULL STRING.							
A CONDUIT SUPPLIED/INSTALLED BY CONTRACTOR - PHILIPS CABLES INSTALLED BY PHILIPS C CONDUITS AND CABLES SUPPLIED AND INSTALLED BY CONTRACTOR							
P Power (AC) S Signal							
CONDUIT			CONDUIT QUANTITY	CABLE TYPE (*)	MINIMUM CONDUIT SIZE	MAXIMUM CONDUIT LENGTH	SPECIAL REQUIREMENTS
RUN NO.	FROM	TO					
C 1	PANEL XB-9	A1	1	(P)	1 1/4"	PER N.E.C.	
C 2	PANEL 91N2	WL	1	(P)	3/4"	PER N.E.C.	
C 3	WL	S1	1	(P)	3/4"	100'	
C 4	S1	WS	1	(P)	3/4"	100'	
C 5	WS	DS	1	(P)	3/4"	200'	
C 6	A1	WS	1	(P)	2"	25'	
C 7	A1	A2	1	(P)	3/4"	100'	
A 8	WS	PT	1	(P)	3"	25'	CONDUIT RUN FOR CONNECTION BETWEEN GANTRY AND JUNCTION BOX UNDERNEATH TABLE.
A 9	WS	HV1	1	(P)	3"	15'	CONDUIT RUN FOR CONNECTION BETWEEN GANTRY AND "HVG".
A 10	WS	HV2	2	(P)	3"	15'	CONDUIT RUN FOR CONNECTION BETWEEN GANTRY AND "HVG".
A 11	WS	UPS	1	(P)	3"	14'	
A 12	WS	AC	SEE NOTE	(P/S)	SEE NOTE	SEE NOTE	(1) 2" CONDUIT WILL CONTAIN BOTH SIGNAL AND 110 VAC POWER CABLES IN A DOUBLE INSULATED POWER CORD. VERIFY WITH LOCAL CODE IF THESE CABLES NEED TO BE SEPARATED. IF SEPARATION IS REQUIRED, SUBSTITUTE (2) 1 1/2" CONDUITS. CABLE NOT TO EXCEED 60 CABLE FEET.

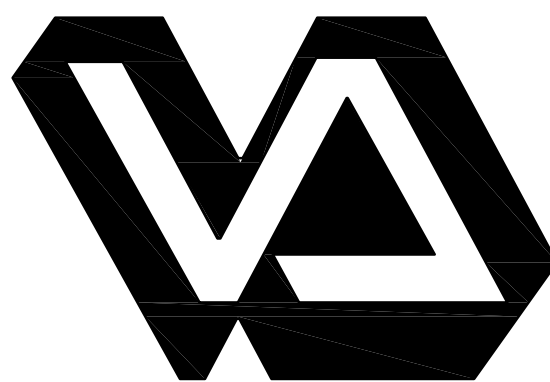
ELECTRICAL NOTES							
THE CONTRACTOR WILL SUPPLY & INSTALL ALL BREAKERS, SHUNT TRIP AND INCOMING POWER TO THE BREAKERS.							
1. THE CONTRACTOR SHALL SUPPLY & INSTALL ALL PULL BOXES, RACEWAYS, CONDUIT RUNS, STAINLESS STEEL COVERS, ETC. CONDUIT/RACEWAYS MUST BE FREE FROM BURRS AND SHARP EDGES OVER ITS ENTIRE LENGTH. ELECTRICAL RACEWAY SHALL BE INSTALLED WITH REMOVABLE COVERS. THE RACEWAY SHOULD BE ACCESSIBLE FOR THE ENTIRE LENGTH. IN CASE OF NON-ACCESSIBLE FLOORS, WALLS AND CEILINGS, AN ADEQUATE NUMBER OF ACCESS HATCHES SHOULD BE SUPPLIED TO ENABLE INSTALLATION OF CABLES. APPROVED CONDUITS MAY BE SUBSTITUTED. ALL RACEWAYS WILL BE DESIGNED IN A MANNER THAT WILL NOT ALLOW CABLES TO FALL OUT OF THE RACEWAY WHEN THE COVERS ARE REMOVED. IN MOST CASES, THIS WILL REQUIRE ABOVE-CEILING RACEWAY TO BE INSTALLED WITH THE COVERS REMOVABLE FROM THE TOP. RACEWAY SYSTEM AS ILLUSTRATED ON THIS DRAWING ARE BASED UPON LENGTH OF FURNISHED CABLES. ANY CHANGES IN ROUTING OF RACEWAY SYSTEM COULD EXCEED MAXIMUM ALLOWABLE LENGTH OF FURNISHED CABLES. CONDUIT OR RACEWAY ABOVE-CEILING MUST BE KEPT AS NEAR TO FINISHED CEILING AS POSSIBLE.							
2. ALL PRE-TERMINATED, OUT TO LENGTH CABLES, WILL BE SUPPLIED AND INSTALLED BY EQUIPMENT SUPPLIER. ALL WIRES THROUGH THE MAIN DISCONNECT AND TO THE GANTRY WILL BE SUPPLIED AND INSTALLED BY THE CONTRACTOR.							
3. PROVIDE AND INSTALL 4 - 2" DIA. CHASE NIPPLES BETWEEN ADJACENT WALL BOXES (WHEN APPLICABLE).							
4. CONDUIT SIZES SHALL BE VERIFIED BY THE CONTRACTOR, IN ACCORDANCE WITH NATIONAL ELECTRICAL CODES.							
5. CONVENIENCE OUTLETS ARE NOT ILLUSTRATED. THEIR NUMBER AND LOCATION ARE TO BE SPECIFIED BY THE ENGINEER. LOCATE AT LEAST ONE DUPLEX OUTLET WITHIN 2'-0" OF THE SYSTEM RACK CABINET (S) AND AT LEAST THREE (3) OUTLETS SPACED AROUND THE CONTROL ROOM. SEE SHEET E1.							
6. ALL SECTIONS OF RACEWAY AND CONDUIT SHALL BE GROUNDED WITH AN INDEPENDENT #6 A.W.G. GREEN WIRE THAT IS TO BE ATTACHED USING SOLDERLESS LUGS. ALL CEILING MOUNTED STRUCTURAL SUPPORT MEMBERS AND CEILING PLATES SHALL ALSO BE GROUNDED. ALL GROUNDING CONNECTIONS, TERMINALS, ETC. SHALL BE INSTALLED IN A MANNER TO PROVIDE ACCESSIBILITY FOR INSPECTION, MAINTENANCE, REPAIR, ETC.							

GENERAL NOTES:							
1. EQUIPMENT SUPPLIER WILL PERFORM ALL CABLE CONNECTIONS, BUT CONTRACTOR MUST RUN CABLES THROUGH WALLS, CEILINGS AND CONDUITS.							
E1. POWER CORD 14' LENGTH; CONNECT TO LEFT SIDE OF GANTRY.							
E2. 1" DIA. CABLE WITH 3" NON-REMOVABLE RECEPTACLE ON EACH END.							
E3. THE MAXIMUM CABLE LENGTH IS 70' FOR THE WALL MOUNTED AC AND 20' FOR THE CART MOUNTED VERSION. THESE TWO CABLES ARE ELECTRICALLY DIFFERENT AND ARE NOT INTERCHANGABLE. A MAXIMUM OF 10' WILL BE USED TO CONNECT FROM THE ELECTRICAL JUNCTION BOX TO THE GANTRY WHEN CONDUIT IS USED.							
E4. 1" DIA. TABLE UMBILICAL CABLE WITH NON-REMOVABLE PLUGS ON EACH END. ONE END PLUGS INTO GANTRY REAR AND THE OTHER END PLUGS INTO TABLE. CABLE MUST LAY ON FLOOR. CABLE IS 25' LONG.							
E5. 1.5" & 2" DIA CORRUGATED FLEX NYLON CONDUIT BOTH HAVING A LENGTH OF 8'. CABLE MUST LAY ON FLOOR. ADEQUATE SPACE IS NECESSARY. CONNECT TO LEFT SIDE OF GANTRY.							
2. POWER CORD ALWAYS COMES FROM LEFT REAR CORNER OF THE GANTRY							



- NOTES:
1. DOOR SWITCH TO BE LOCATED ON HINGE SIDE OF DOOR JAMB.
  2. IN CASE OF A DOUBLE JAMB, A DOOR SWITCH SHOULD BE LOCATED ON EACH HINGE SIDE.
  3. LED WARNING LIGHT, SEE LIGHT FIXTURE SCHEDULE ON E1.

## 2 E2 DOOR SWITCH/WARNING LIGHT/SAFETY SWITCH DETAIL NO SCALE

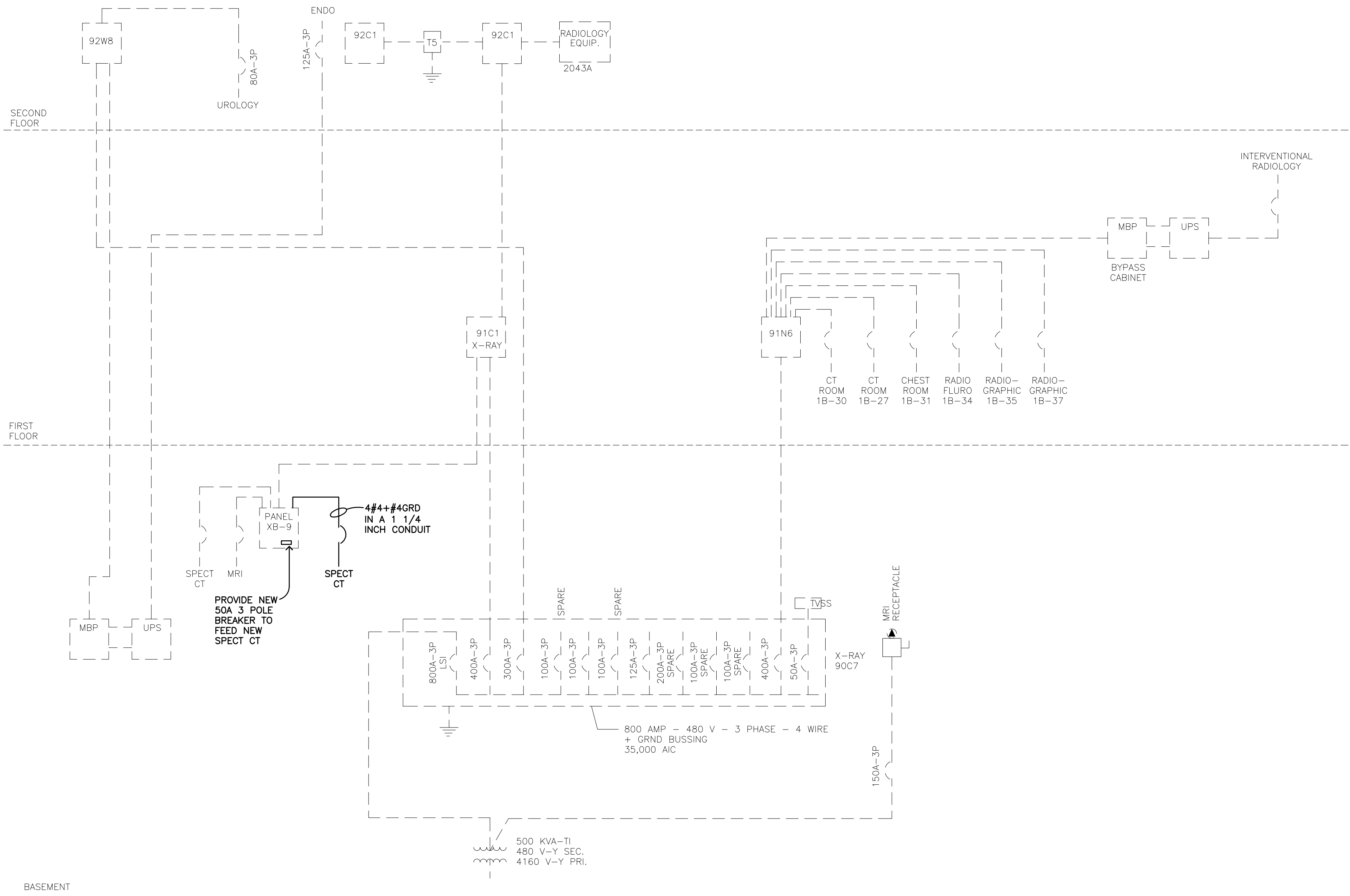
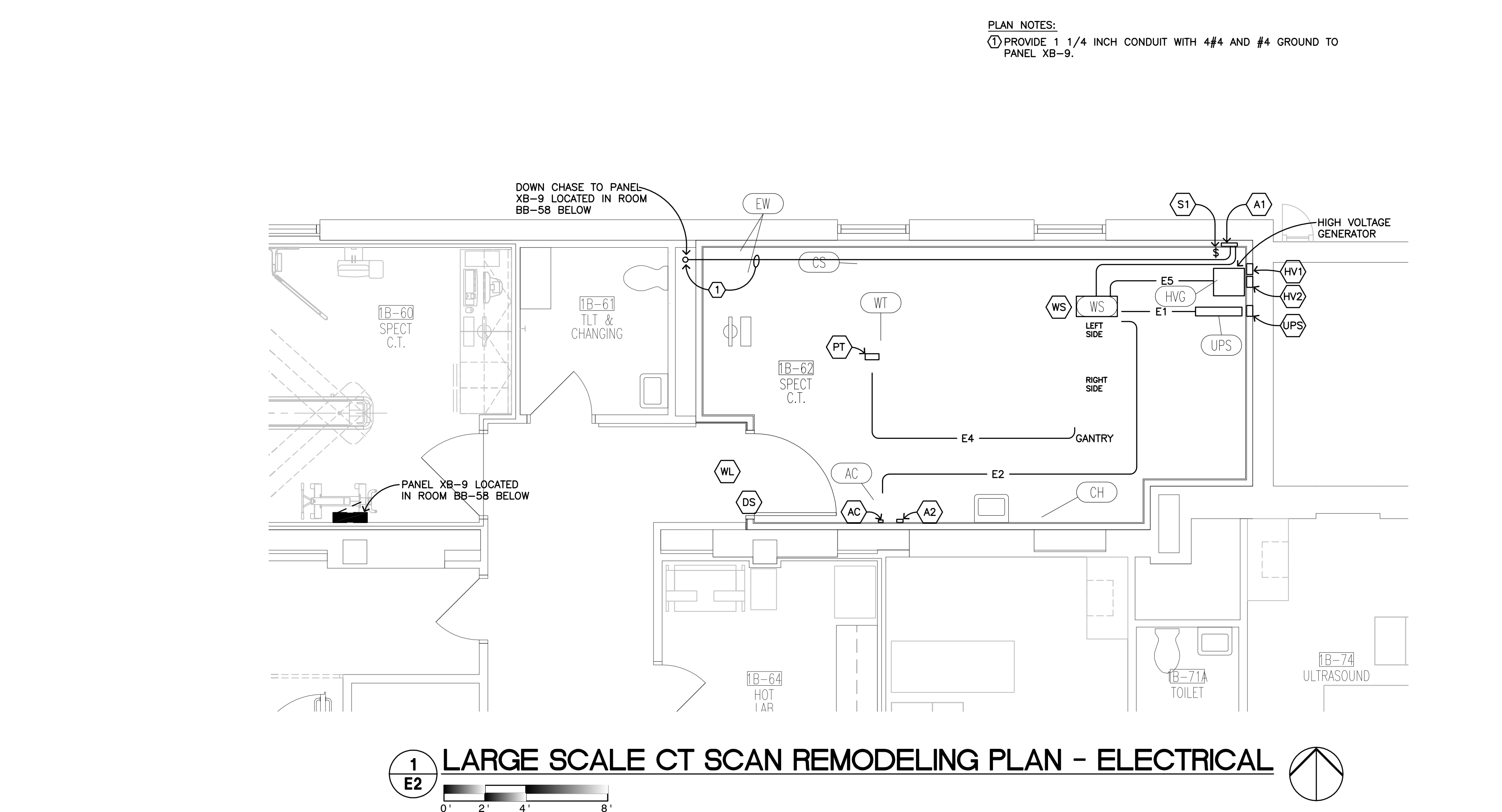


Dept. of Veterans Affairs  
Health Care System  
2101 Elm Street North  
Fargo, ND 58102






ELECTRICAL LEGEND	
ITEM NUMBER	DESCRIPTION
A1	400 - 480V, 50 A CIRCUIT BREAKER. LOCATE CIRCUIT BREAKER 60" ABOVE FINISHED FLOOR TO TOP OF CIRCUIT BREAKER. CIRCUIT BREAKER USED SHALL BE UL LISTED OR RECOGNIZED, RATED MAXIMUM 50A TO ENSURE COMPLIANCE TO IEC 60328. VERIFY THAT CIRCUIT BREAKER IS NOT MARKED WITH A GREEK SYMBOL, AND LOOK FOR VDE, TÜV, NEMKO, SEMKO, DEMKO, OR FMKO CERTIFICATION MARK. VERIFY LOCATION WITH VA PROJECT ENGINEER. COORDINATE WITH EQUIPMENT SUPPLIER.
A2	24 VAC, 1 A MINIMUM RATING, REMOTE EMERGENCY OFF (EPO), LATCHING TYPE, SINGLE MUSHROOM PUSH BUTTON, WITH N.O. DRY CONTACTS, AND HINGED, SEE-THROUGH PROTECTIVE COVER. FLUSH MOUNTED 60" ABOVE FINISHED FLOOR TO CENTERLINE OF BOX. (OPTIONAL).
WS	12" W X 8" L X 6" D FLOOR BOX MOUNTED UNDER FLOOR. SHALL CONTAIN A FIELD CUT OPENING WITH GROMMET LOCATED BY EQUIPMENT SUPPLIER AT TIME OF INSTALLATION. PROVIDE AN 8" CORE DRILL FROM FINISHED FLOOR TO BOX.
PT	4" W X 4" L X 4" D FLOOR BOX MOUNTED UNDER FLOOR. SHALL CONTAIN A FIELD CUT OPENING WITH GROMMET LOCATED BY PHILIPS SERVICE AT TIME OF INSTALLATION. PROVIDE A 3" CORE DRILL FROM FINISHED FLOOR TO BOX.
HV1	10" W X 10" L X 6" D FLUSH MOUNTED JUNCTION BOX. REMOVABLE COVER PLATE SHALL CONTAIN A GROMMETED NOTCH FOR CABLE ACCESS AS REQUIRED. 12" FROM FLOOR TO BOTTOM OF BOX. PREFERRED LOCATION BEHIND FINAL LOCATION OF "HVG".
HV2	10" W X 10" L X 6" D FLUSH MOUNTED JUNCTION BOX. REMOVABLE COVER PLATE SHALL CONTAIN A GROMMETED NOTCH FOR CABLE ACCESS AS REQUIRED. 12" FROM FLOOR TO BOTTOM OF BOX. PREFERRED LOCATION BEHIND FINAL LOCATION OF "HVG".
UPS	10" W X 10" L X 6" D FLUSH MOUNTED WALL BOX. REMOVABLE COVER PLATE SHALL CONTAIN A GROMMETED NOTCH FOR CABLE ACCESS AS REQUIRED. 12" FROM FLOOR TO BOTTOM OF BOX. PREFERRED LOCATION BEHIND FINAL LOCATION OF "UPS".
AC	4" W X 4" L X 4" D (OR EQUIVALENT) FLUSH MOUNTED JUNCTION BOX (18" ABOVE FINISHED FLOOR TO BOTTOM OF BOX). CONNECT TO IEC 60328. VERIFY THAT CIRCUIT BREAKER IS NOT MARKED WITH A GREEK SYMBOL, AND LOOK FOR VDE, TÜV, NEMKO, SEMKO, DEMKO, OR FMKO CERTIFICATION MARK. VERIFY LOCATION WITH VA PROJECT ENGINEER. COORDINATE WITH EQUIPMENT SUPPLIER.
WL	WARNING LIGHT ABOVE X-RAY ROOM DOOR
DS	DOOR ACTIVATED SWITCH SQUARE-D CAT. # CLASS 9007 TYPE A0 (OR EQUAL). SWITCH LOCATED ON HINGE SIDE OF DOOR.
S1	120VAC / 15 A, SINGLE POLE GENERAL PURPOSE ON/OFF SWITCH WITH RED COVER. FLUSH MOUNTED 60" ABOVE FINISHED FLOOR TO CENTERLINE OF BOX. SAFETY SWITCH IS REQUIRED BETWEEN SCANNER UNIT AND "WL" FOR EQUIPMENT SERVICE, IF A WARNING LIGHT IS USED. LOCATE NEXT TO "A1" IF POSSIBLE.
⌚	120 V / 20A DEDICATED DUPLEX OUTLET.
⚡	RJ45 TYPE ETHERNET 100/1000 MBIT NETWORK CONNECTOR.
⚡	RJ45 TYPE ETHERNET 100/1000 MBIT NETWORK CONNECTOR. NETWORK FIBER OPTIC AND ETHERNET CABLES, CONNECTORS, WALL BOXES, PATCH PANELS, ETC. ARE THE RESPONSIBILITY OF THE CONTRACTOR.

GENERAL ELECTRICAL INFORMATION	
1. GENERAL THE CONTRACTOR SHALL BE SOLELY RESPONSIBLE, AT THEIR EXPENSE, FOR PREPARATION OF THE SITE, INCLUDING ANY REQUIRED ELECTRICAL ALTERATIONS. THE SITE PREPARATION SHALL BE IN ACCORDANCE WITH THIS PLAN AND SPECIFICATIONS, THE ARCHITECTURAL/CONSTRUCTION DRAWINGS AND IN COMPLIANCE WITH ALL SAFETY AND ELECTRICAL CODES.	
2. MATERIALS AND LABOR THE CONTRACTOR SHALL BE SOLELY RESPONSIBLE TO PROVIDE AND INSTALL ALL ELECTRICAL DUCTS, BOXES, CONDUIT, CABLES, WIRES, FITTINGS, BUSHINGS, ETC., AS SEPARATELY SPECIFIED HEREIN.	
3. ELECTRICAL DUCTS AND BOXES ELECTRICAL DUCTS AND BOXES SHALL BE ACCESSIBLE AND HAVE REMOVABLE COVERS. FLOOR DUCTS AND BOXES SHALL HAVE WATERTIGHT COVERS. DUCTS SHALL BE DIVIDED INTO AS MANY AS THREE SEPARATE CHANNELS BY METAL DIVIDERS, SEPARATELY SPECIFIED HEREIN, TO SEPARATE WIRING AND/OR CABLES INTO GROUPS AS FOLLOWS: GROUP A: POWER WIRING AND/OR CABLES. GROUP B: SIGNAL AND/OR DATA AND PROTECTIVE GROUND WIRING AND/OR CABLES. GROUP C: X-RAY HIGH VOLTAGE CABLES. THE USE OF 90 DEG. ELLS IS NOT ACCEPTABLE. ON CEILING DUCT AND WALL DUCT USE 45 DEG. BENDS AT ALL CORNERS. ALL INTERSECTING POINTS IN DUCT TO HAVE CROSS OVER TUNNELS SUPPLIED AND INSTALLED BY CONTRACTOR TO MAINTAIN SEPARATION OF CABLES.	
4. CONDUIT CONDUIT POINT-TO-POINT RUNS SHALL BE AS DIRECT AS POSSIBLE. EMPTY CONDUIT RUNS USED FOR CABLES MAY REQUIRE PULL BOXES LOCATED ALONG THE RUN. A PULL WIRE OR CORD SHALL BE INSTALLED IN EACH CONDUIT RUN. ALL CONDUITS WHICH ENTER DUCT PRIOR TO THEIR TERMINATION POINT MUST MAINTAIN SEPARATION FROM OTHER CABLES. VIA USE OF DIVIDERS, CROSS OVER TUNNELS, OR FLEX CONDUIT SUPPLIED AND INSTALLED BY CONTRACTOR FROM ENTRANCE INTO DUCT TO EXIT FROM DUCT. MAXIMUM CONDUIT LENGTHS SHOWN ON THESE PLANS ARE CALCULATED FROM ELECTRICAL BOX ENTRANCE TO ELECTRICAL BOX ENTRANCE. ANY CONDUIT INSTALLED BELOW GRADE MUST BE WATER TIGHT.	
5. CONDUCTORS ALL CONDUCTORS, SEPARATELY SPECIFIED, SHALL BE 75° C STRANDED COPPER, RUNG OUT AND MARKED.	
6. DISCONNECTING MEANS A DISCONNECTING MEANS SHALL BE PROVIDED AS SEPARATELY SPECIFIED.	
7. WARNING LIGHTS AND DOOR SWITCHES "X-RAY ON" WARNING LIGHTS AND X-RAY TERMINATION DOOR SWITCHES SHOULD BE PROVIDED AT ALL ENTRANCES TO X-RAY ROOMS.	
8. GROUNDING INSULATED GROUNDING MUST CONFORM WITH CURRENT REQUIREMENTS FOR ELECTRICALLY SUSCEPTIBLE PATIENT AREAS. SEE ARTICLE 517, NATIONAL ELECTRICAL CODE.	

THE USE OF 90 DEGREE ELLS IS NOT ACCEPTABLE  
USE 45 DEGREE BENDS AT ALL RACEWAY  
THE MINIMUM BEND RADIUS OF THE FIBER OPTIC  
CABLES IS 2 INCHES.



## 3 E2 REVISED XRAY PANEL RISER - BUILDING 9 NO SCALE

		 <div>Dept. of Veterans Affairs Health Care System 2101 Elm Street North Fargo, ND 58102</div>	 <div>IMAGE GROUP INC., Architecture &amp; Interiors SOLJEN &amp; LARSON ENGINEERING, Structural Engineers OBERMILLER NELSON ENGINEERING, Mechanical Engineers MBN ENGINEERING, Electrical Engineers</div> <div>IMAGE GROUP INC. 403 CENTER AVENUE, SUITE 300 MOORHEAD, MN 56560</div>	 <div>MECHANICAL - ELECTRICAL - CIVIL 100 1ST AVE. SUITE 200 FARGO, ND 58102 PHONE: 701.478.0200 FAX: 701.478.0200</div>			Drawing Title <b>LARGE SCALE SPECT CT REMODELING PLAN - ELECTRICAL</b>		Project Title <b>SITE PREP FOR SPECT CT ROOM 1B-62</b>		Date <b>MARCH 7, 2014</b>		Department of Veterans Affairs				
							Scale <b>AS NOTED</b>										
VA Project No. <b>437-14-115</b>							Contract No. <b>VA263-P-1217 VA263-C-</b>		Designed By <b>MB</b>		Checked By <b>MB</b>			Drawn By <b>TP</b>		Drawing No. <b>E2</b>	
Building No. <b>9</b>							AutoCAD File Name <b>14-005 E2.dwg</b>		Location <b>FARGO VA HEALTH CARE SYSTEM FARGO, ND</b>					Dwg. 7 of 7			
Revisions							Date										