

IF THIS SHEET IS NOT 30" X 42" SEE GRAPHIC SCALES

three inches = one foot

one and one half inches = one foot

one inch = one foot

three quarters inch = one foot

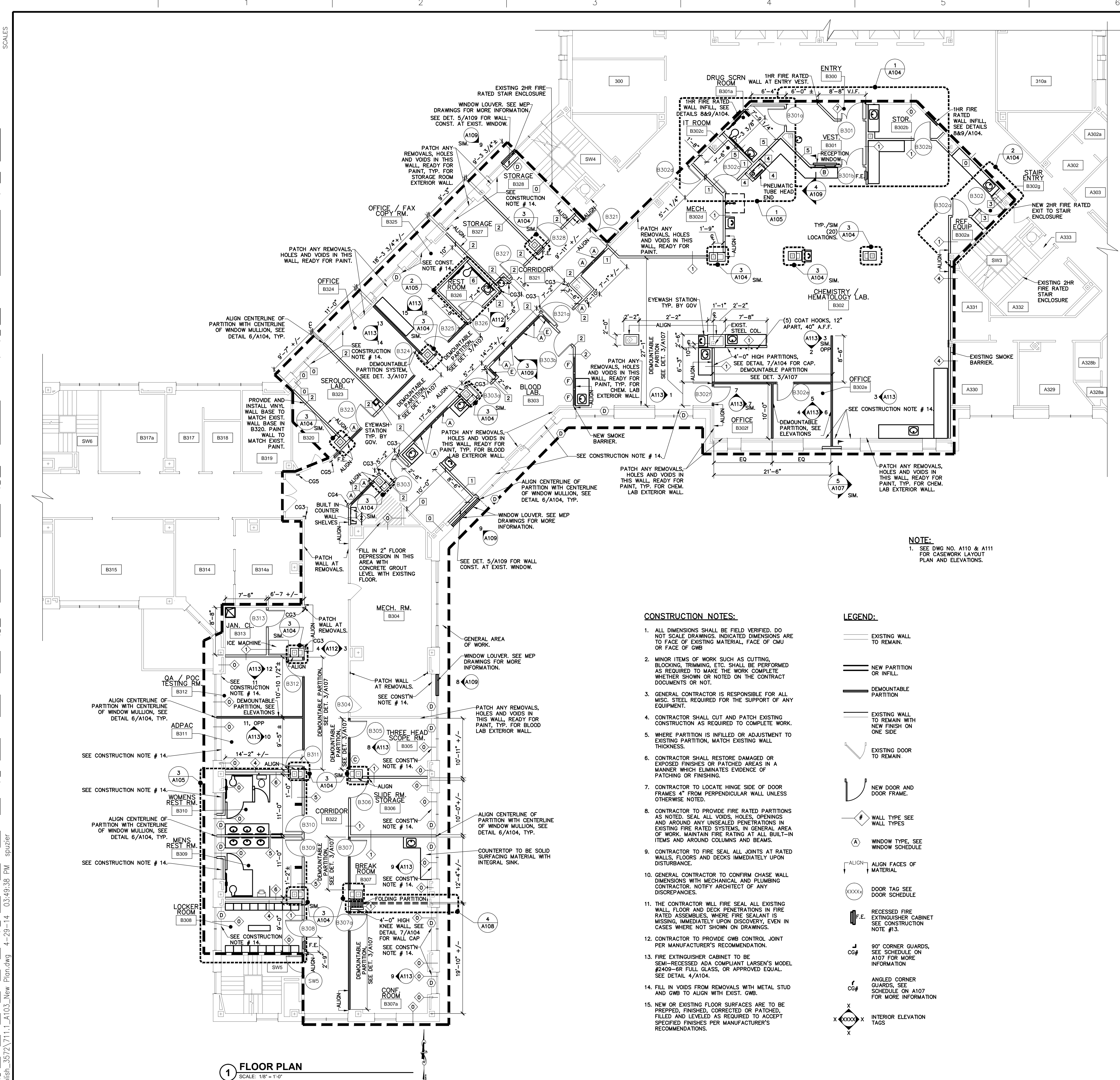
one half inch = one foot

three eighths inch = one foot

one quarter inch = one foot

one eighth inch = one foot

one eighth inch = one foot



CONSTRUCTION NOTES:

1. ALL DIMENSIONS SHALL BE FIELD VERIFIED. DO NOT SCALE DRAWINGS. INDICATED DIMENSIONS ARE TO FACE OF EXISTING MATERIAL, FACE OF CMU OR FACE OF GMB.
2. MINOR ITEMS OF WORK SUCH AS CUTTING, BLOCKING, TRIMMING, ETC. SHALL BE PERFORMED AS REQUIRED TO MAKE THE WORK COMPLETE. WHETHER SHOWN OR NOTED ON THE CONTRACT DOCUMENTS OR NOT.
3. GENERAL CONTRACTOR IS RESPONSIBLE FOR ALL MISC. STEEL REQUIRED FOR THE SUPPORT OF ANY EQUIPMENT.
4. CONTRACTOR SHALL CUT AND PATCH EXISTING CONSTRUCTION AS REQUIRED TO COMPLETE WORK.
5. WHERE PARTITION IS INFILLED OR ADJUSTMENT TO EXISTING PARTITION, MATCH EXISTING WALL THICKNESS.
6. CONTRACTOR SHALL RESTORE DAMAGED OR EXPOSED FINISHES OR PATCHED AREAS IN A MANNER WHICH ELIMINATES EVIDENCE OF PATCHING OR FINISHING.
7. CONTRACTOR TO LOCATE HINGE SIDE OF DOOR FRAMES 4" FROM PERPENDICULAR WALL UNLESS OTHERWISE NOTED.
8. CONTRACTOR TO PROVIDE FIRE RATED PARTITIONS AS NOTED. SEAL ALL VOIDS, HOLES, OPENINGS AND AROUND ANY UNSEALED PENETRATIONS IN EXISTING FIRE RATED SYSTEMS, IN GENERAL AREA OF WORK, MAINTAIN FIRE RATING AT ALL BUILT-IN ITEMS AND AROUND COLUMNS AND BEAMS.
9. CONTRACTOR TO FIRE SEAL ALL JOINTS AT RATED WALLS, FLOORS AND DECKS IMMEDIATELY UPON DISTURBANCE.
10. GENERAL CONTRACTOR TO CONFIRM CHASE WALL DIMENSIONS WITH MECHANICAL AND PLUMBING CONTRACTOR. NOTIFY ARCHITECT OF ANY DISCREPANCIES.
11. THE CONTRACTOR WILL FIRE SEAL ALL EXISTING WALL, FLOOR AND DECK PENETRATIONS IN FIRE RATED ASSEMBLIES, WHERE FIRE SEALANT IS MISSING, IMMEDIATELY UPON DISCOVERY, EVEN IN CASES WHERE NOT SHOWN ON DRAWINGS.
12. CONTRACTOR TO PROVIDE GMB CONTROL JOINT PER MANUFACTURER'S RECOMMENDATION.
13. FIRE EXTINGUISHER CABINET TO BE SEMI-RECESSED ADA COMPLIANT LARSEN'S MODEL #2409-6R FULL GLASS, OR APPROVED EQUAL. SEE DETAIL 4/A104.
14. FILL IN VOIDS FROM REMOVALS WITH METAL STUD AND GMB TO ALIGN WITH EXIST. GMB.
15. NEW OR EXISTING FLOOR SURFACES ARE TO BE PREPPED, FINISHED, CORRECTED OR PATCHED, FILLED AND LEVELED AS REQUIRED TO ACCEPT SPECIFIED FINISHES PER MANUFACTURER'S RECOMMENDATIONS.

LEGEND:

- EXISTING WALL TO REMAIN.
- NEW PARTITION OR INFILL.
- DEMOUNTABLE PARTITION.
- EXISTING WALL TO REMAIN WITH NEW FINISH ON ONE SIDE.
- EXISTING DOOR TO REMAIN.
- NEW DOOR AND DOOR FRAME.
- WALL TYPE. SEE WALL TYPES.
- WINDOW TYPE. SEE WINDOW SCHEDULE.
- ALIGN FACES OF MATERIAL.
- DOOR TAG. SEE DOOR SCHEDULE.
- RECESSED FIRE EXTINGUISHER CABINET. SEE CONSTRUCTION NOTE #13.
- 90° CORNER GUARDS. SEE SCHEDULE ON A107 FOR MORE INFORMATION.
- ANGLED CORNER GUARDS. SEE SCHEDULE ON A107 FOR MORE INFORMATION.
- INTERIOR ELEVATION TAGS.

WALL TYPES:

- INTERIOR RESURFACING
- TYPICAL INTERIOR PARTITION
- 4 7/8" INTERIOR PARTITION (UL # U419 1HR.)
- 2HR FIRE RATED PARTITION (UL # U906 2HR.)
- INTERIOR PARTITION, GMB ONE SIDE
- INTERIOR PARTITION, WITH CERAMIC TILE
- CHASE, WITH CERAMIC TILE
- INTERIOR PARTITION, WITH CERAMIC TILE (UL # U404 1HR.)
- ENCLOSURE PARTITION AT COLUMN ENCLOSURE (SEE 3/A104)

KEY PLAN - BLDG. 1 THIRD FLOOR

SCALE: N.T.S.

CONSULTANTS:

Engineering and Land Surveying, P.C.
1533 Crescent Road - Clifton Park, NY 12065

ARCHITECT/ENGINEERS:

HA2F
CONSULTANTS IN ENGINEERING
1 VAN PATTEN DR., CLIFTON PARK, N.Y. 12065
(518) 877-8566

Drawing Title
FLOOR PLAN

Approved Project Director

Project Title
**STRATTON VAMC 3RD FLOOR
B WING AND CORE
CONSOLIDATED LABS RENOVATION**

Location
STRATTON VA MEDICAL CENTER NY

Date
04/04/2014

Checked
CMD

Drawn
MM/LKB

Project Number
528A8-10-801

Building Number
BLDG. 1

Drawing Number
A-103

Dwg. 7 of 54

Office of
Construction
and Facilities
Management

Department of
Veterans Affairs