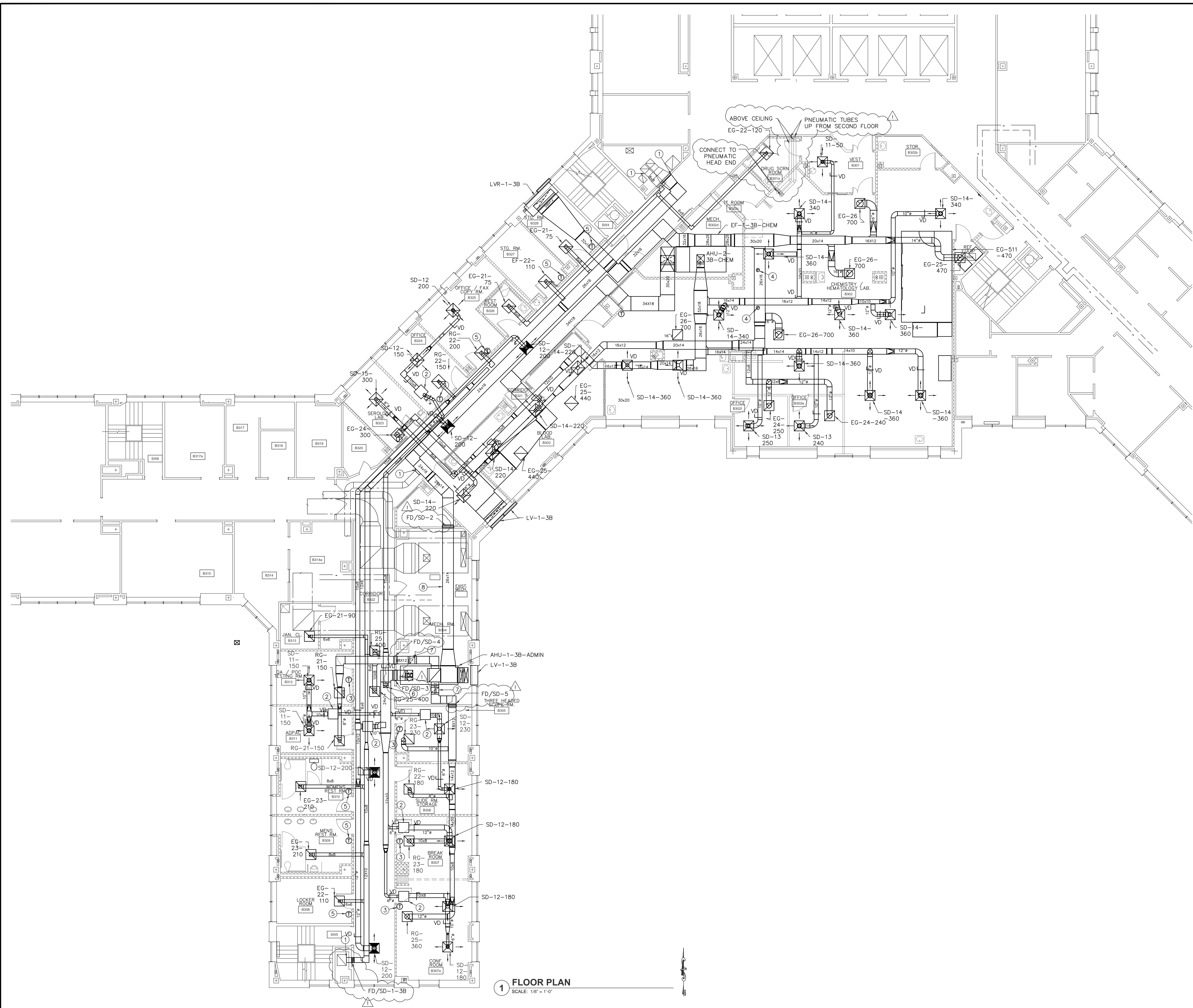


three inches = one foot
one and one half inches = one foot
one inch = one foot
three quarters inch = one foot
one half inch = one foot
three eighths inch = one foot
one quarter inch = one foot
one eighth inch = one foot

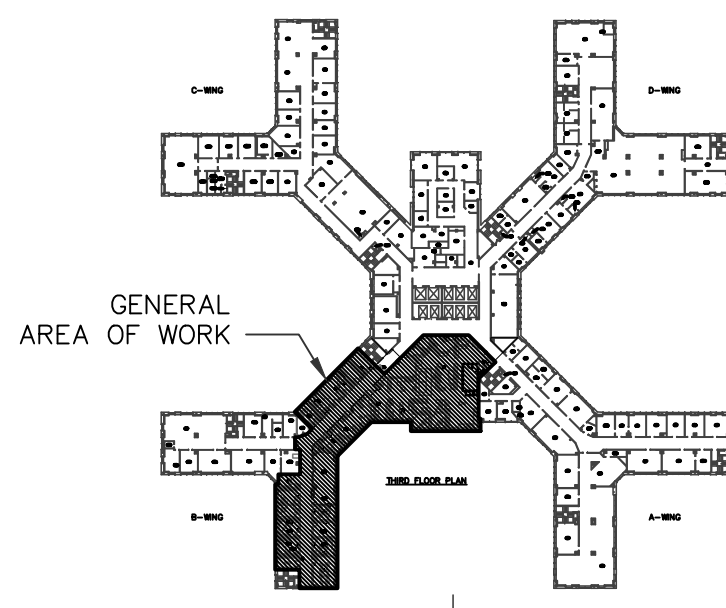
VA FORM 08-6231
E:\Projects\2012015.01\CoatNew Consolidated Labs 3B Sheets\MH-100.dwg 4-30-14 03:10:56 PM palmatiers



1 FLOOR PLAN
SCALE: 1/8" = 1'-0"

CONSTRUCTION NOTES:

- 1 CONNECT TO EXISTING DUCTWORK LEFT BY REMOVALS. SEE SPECIFICATIONS FOR CLEANING REQUIREMENTS.
- 2 NEW TERMINAL UNIT SEE SHEET MP-100 FOR CALLOUT AND PIPING ARRANGEMENTS.
- 3 THERMOSTAT TO CONTROL VAV TERMINAL UNIT AND RADIANT CEILING PANEL - SEE MP-100 FOR RADIANT CEILING PANEL.
- 4 8" DUCT DOWN - CONNECT TO VISTA ANALYZER PER MANUFACTURER'S RECOMMENDATIONS.
- 5 THERMOSTAT TO CONTROL RADIANT CEILING PANEL SEE MP-100 FOR RADIANT CEILING PANELS.
- 6 DROP DOWN FROM BOTTOM OF DUCT.
- 7 RISE UP TO 8" TO BOTTOM OF DUCT.
- 8 COORDINATE HEIGHT AND CONFIGURATION OF DUCTWORK WITH EXISTING MECHANICAL SYSTEMS



0 KEY PLAN - BLDG. 1 THIRD FLOOR
SCALE: N.T.S.

SCALE: 1/8" = 1'-0"

REVISIONS	DATE
100% DESIGN SUBMISSION	2014/04/29
95% DESIGN SUBMISSION REVISED	2014/04/03
95% DESIGN SUBMISSION	2014/02/23
65% DESIGN RE-SUBMISSION	2014/01/31
65% DESIGN SUBMISSION	2013/09/30
30% DESIGN SUBMISSION	2013/06/04
	2013/01/18

CONSULTANTS:

Engineering and Land Surveying, P.C.
1533 Crescent Road - Clifton Park, NY 12065

ARCHITECT/ENGINEERS:

HA2F
CONSULTANTS IN ENGINEERING
1 VAN PATTEN DR, CLIFTON PARK, NY, 12065
(518) 877-8566

Drawing Title
**MECHANICAL NEW WORK 3B
DUCTWORK PLAN**

Approved: Project Director

Project Title
**STRATTON VAMC 3RD FLOOR
B WING AND CORE
CONSOLIDATE LABS RENOVATION**

Location
STRATTON VA MEDICAL CENTER NY

Date
04/03/2014

Checked
SMP

Drawn
SMP

Project Number
528A8-10-801

Building Number
BLDG. 1

Drawing Number
MH-100

Dwg. 24 of 54

Office of
Construction
and Facilities
Management

Department of
Veterans Affairs