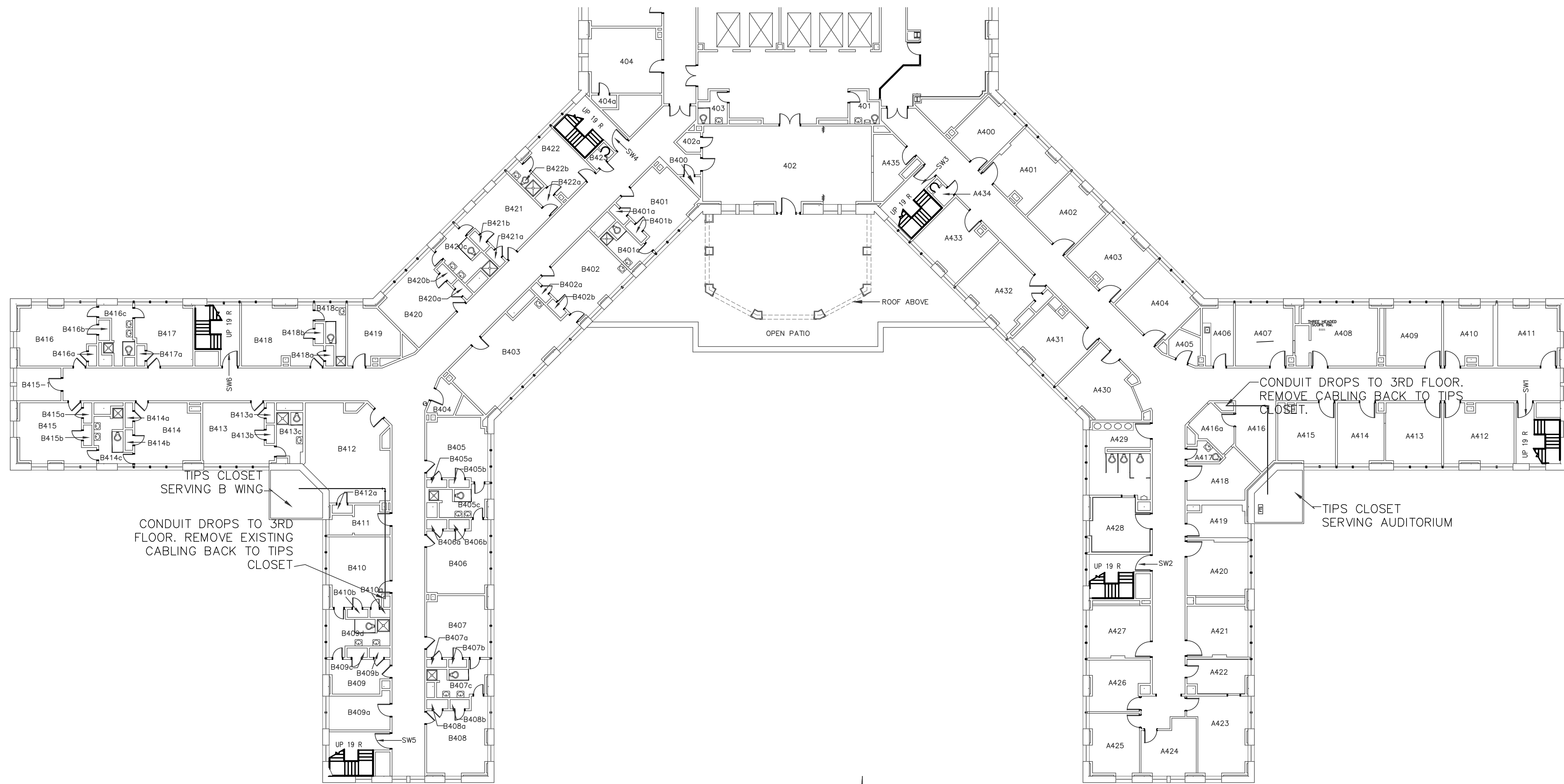


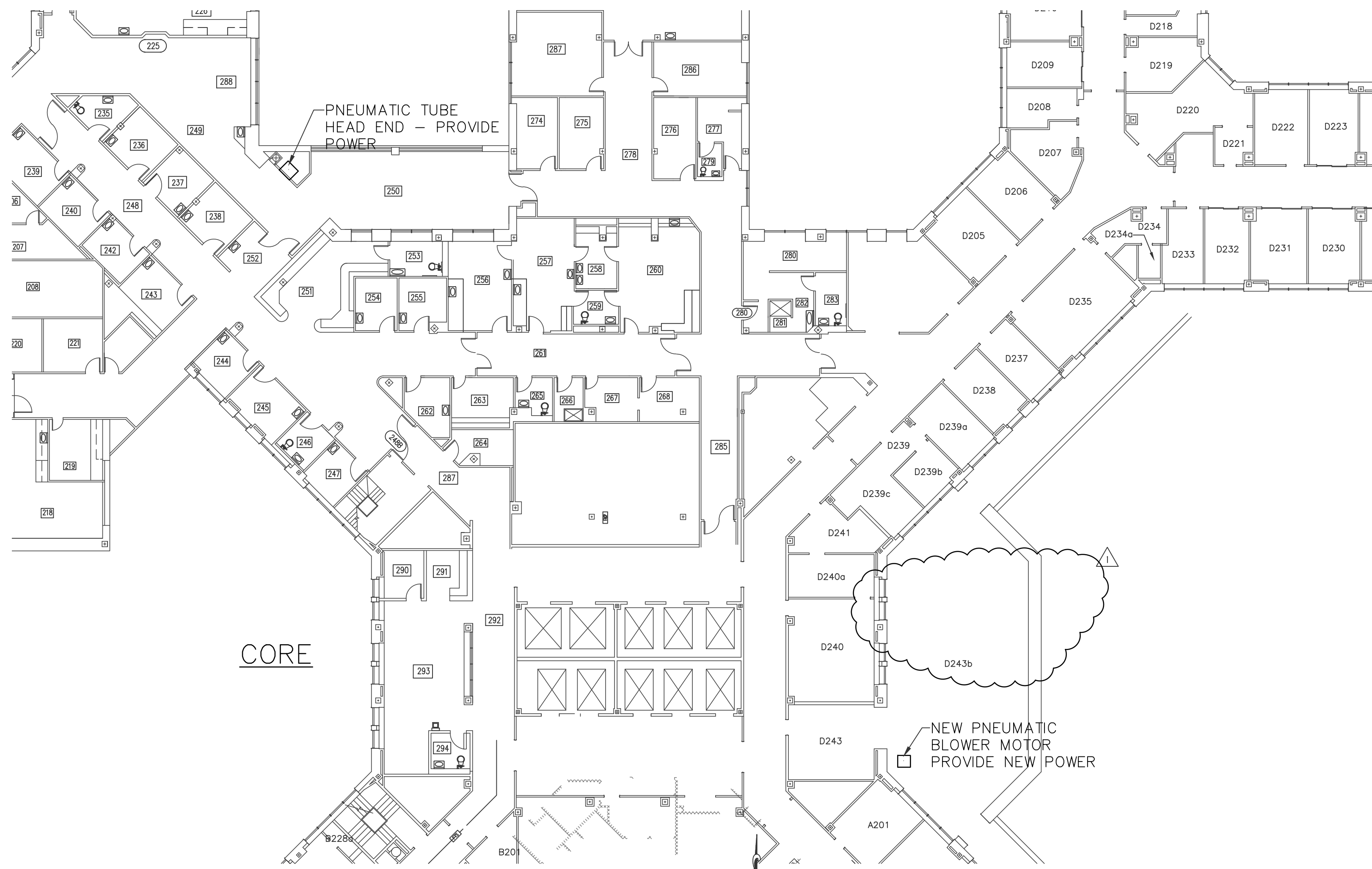
three inches = one foot  
one and one half inches = one foot  
one inch = one foot  
three quarters inch = one foot  
one half inch = one foot  
three eighths inch = one foot  
one quarter inch = one foot  
one eighth inch = one foot

ES:\Projects\2012015.01\Coat\New Consolidated Labs 3B Sheets\ES-400.dwg 4-29-14 02:31:59 PM palmatiers

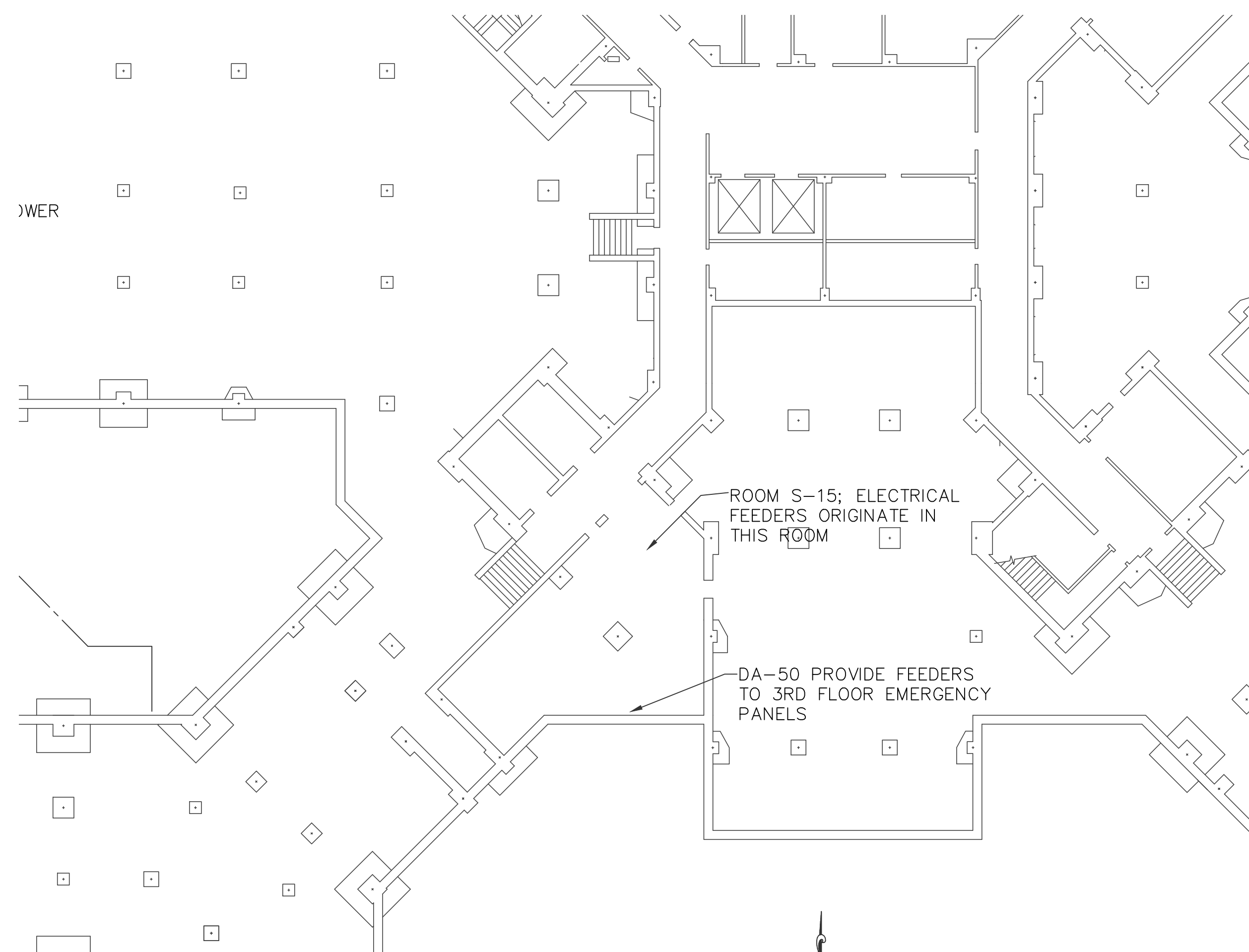
VA FORM 08-6231



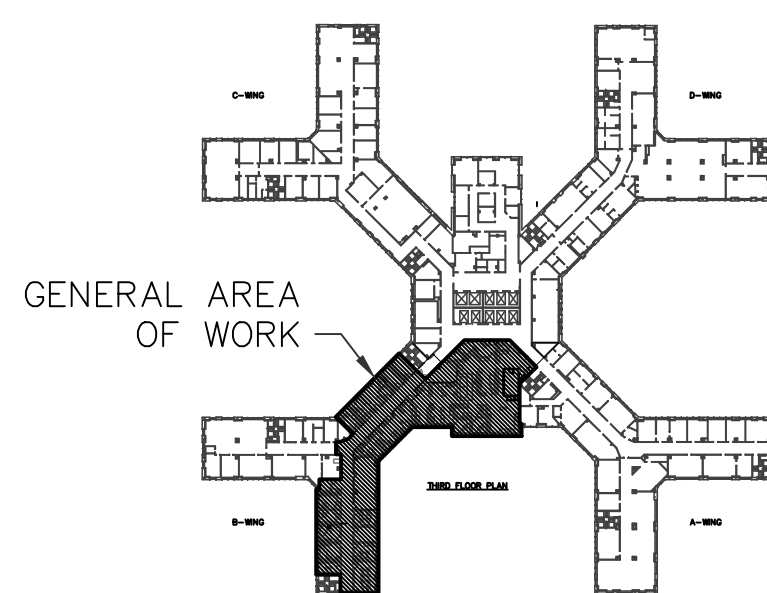
1 FLOOR PLAN - FOURTH FLOOR  
SCALE: 1/16" = 1'-0"



1 FLOOR PLAN - SECOND FLOOR  
SCALE: 1/16" = 1'-0"



1 FLOOR PLAN - SECOND FLOOR  
SCALE: 1/16" = 1'-0"



0 KEY PLAN - BLDG. 1 THIRD FLOOR  
SCALE: N.T.S.

SCALE: 1/8"=1'-0"

RFI#3 RESPONSE	2014/04/29
100% DESIGN SUBMISSION	2014/04/03
95% DESIGN SUBMISSION REVISED	2014/02/23
95% DESIGN SUBMISSION	2014/01/31
65% DESIGN RE-SUBMISSION	2013/09/30
65% DESIGN SUBMISSION	2013/06/04
30% DESIGN SUBMISSION	2013/01/18
Revisions:	Date

CONSULTANTS:

**Engineering and Land Surveying, P.C.**  
1533 Crescent Road - Clifton Park, NY 12065



ARCHITECT/ENGINEERS:

**HA2F**  
CONSULTANTS IN ENGINEERING  
1 VAN PATTEN DR, CLIFTON PARK, N.Y. 12065  
(518) 877-8566

HA2F PROJECT No.: 2012015.01

Drawing Title  
**ELECTRICAL NEW WORK 3B  
DETAIL PLANS**

Approved Project Director  
\_\_\_\_\_  
\_\_\_\_\_  
\_\_\_\_\_

Project Title  
**STRATTON VAMC 3RD FLOOR  
B WING AND CORE  
CONSOLIDATE LABS RENOVATION**

Location  
STRATTON VA MEDICAL CENTER NY

Date  
04/03/2014

Checked  
SMP

Drawn  
SMP

Project Number  
528A8-10-801

Building Number  
BLDG. 1

Drawing Number  
**ES-400**

Dwg. 47 of 54

Office of  
Construction  
and Facilities  
Management

Department of  
Veterans Affairs