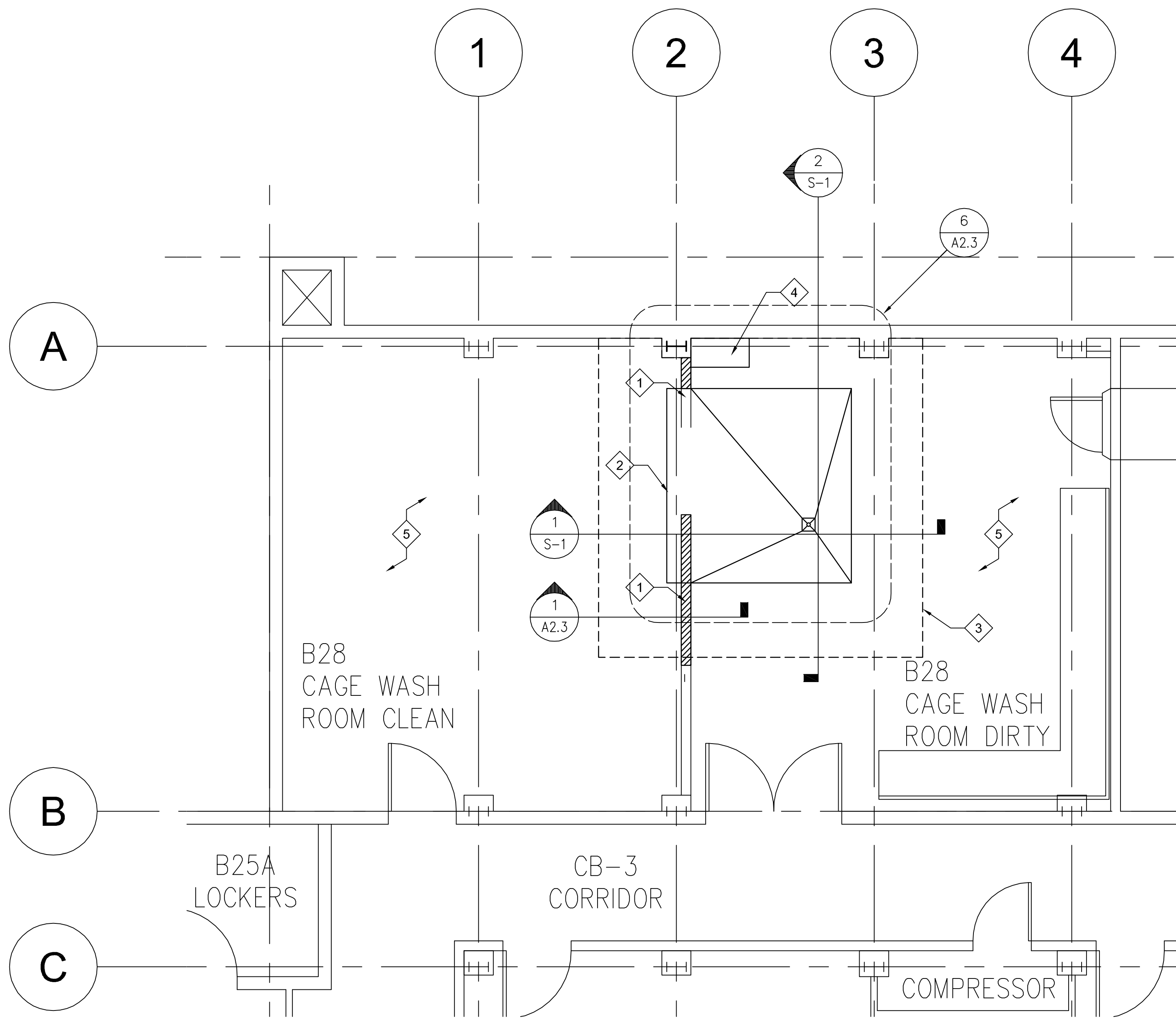
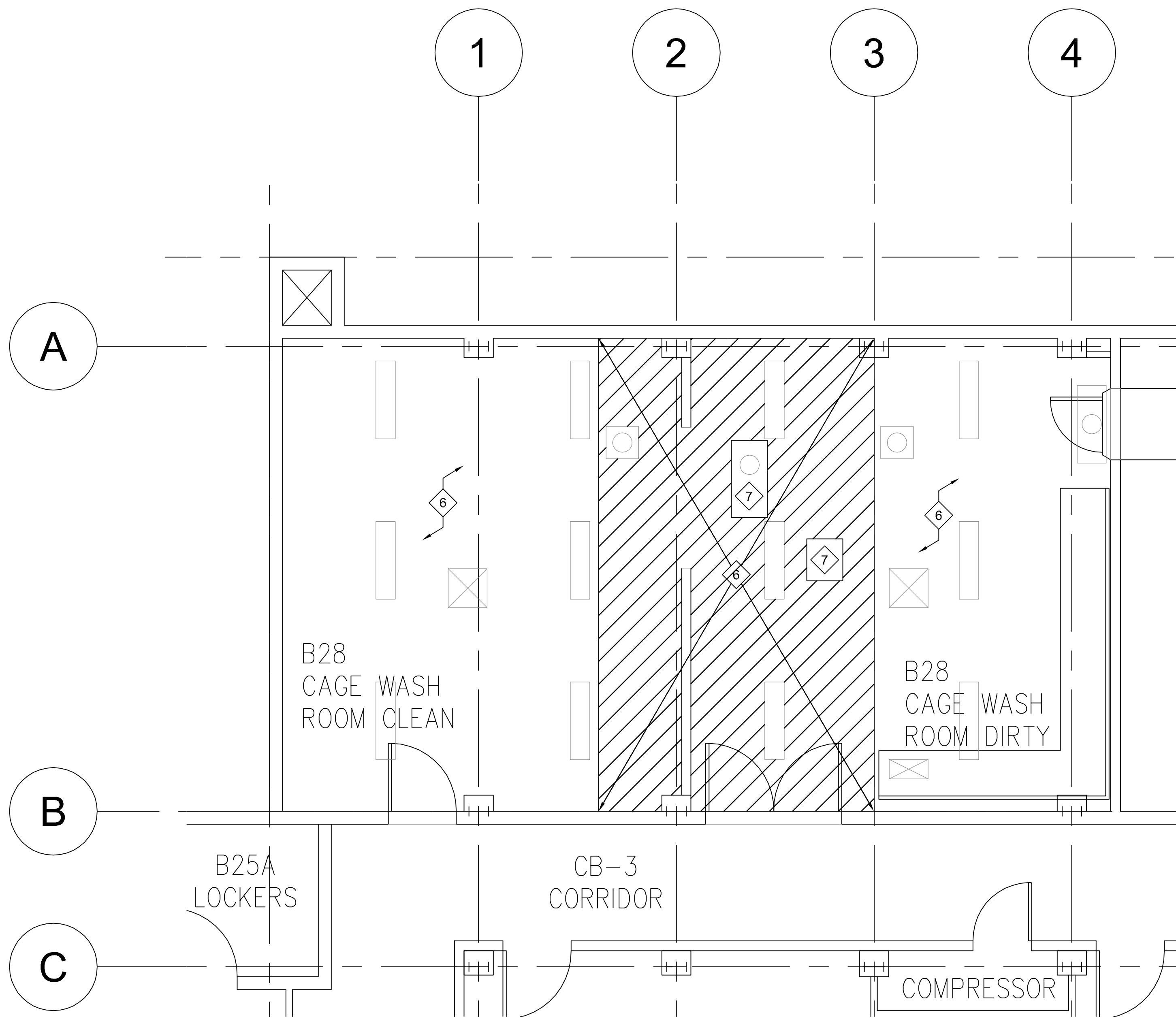




three inches = one foot  
one and one half inches = one foot  
one inch = one foot  
three quarters inch = one foot  
one half inch = one foot  
three eighths inch = one foot  
one quarter inch = one foot  
one eighth inch = one foot



1 ENLARGED BASEMENT RENOVATION FLOOR PLAN  
SCALE : 1/4" = 1'-0"



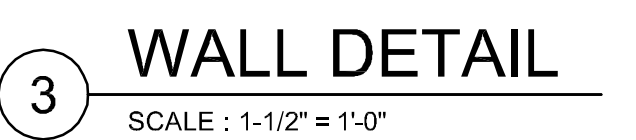
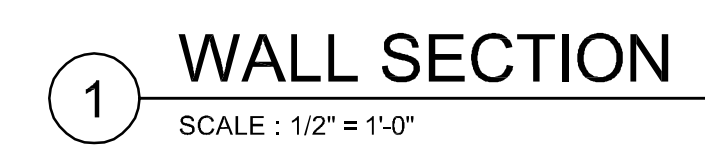
2 ENLARGED BASEMENT RENOVATION REFLECTED CEILING PLAN  
SCALE : 1/4" = 1'-0"

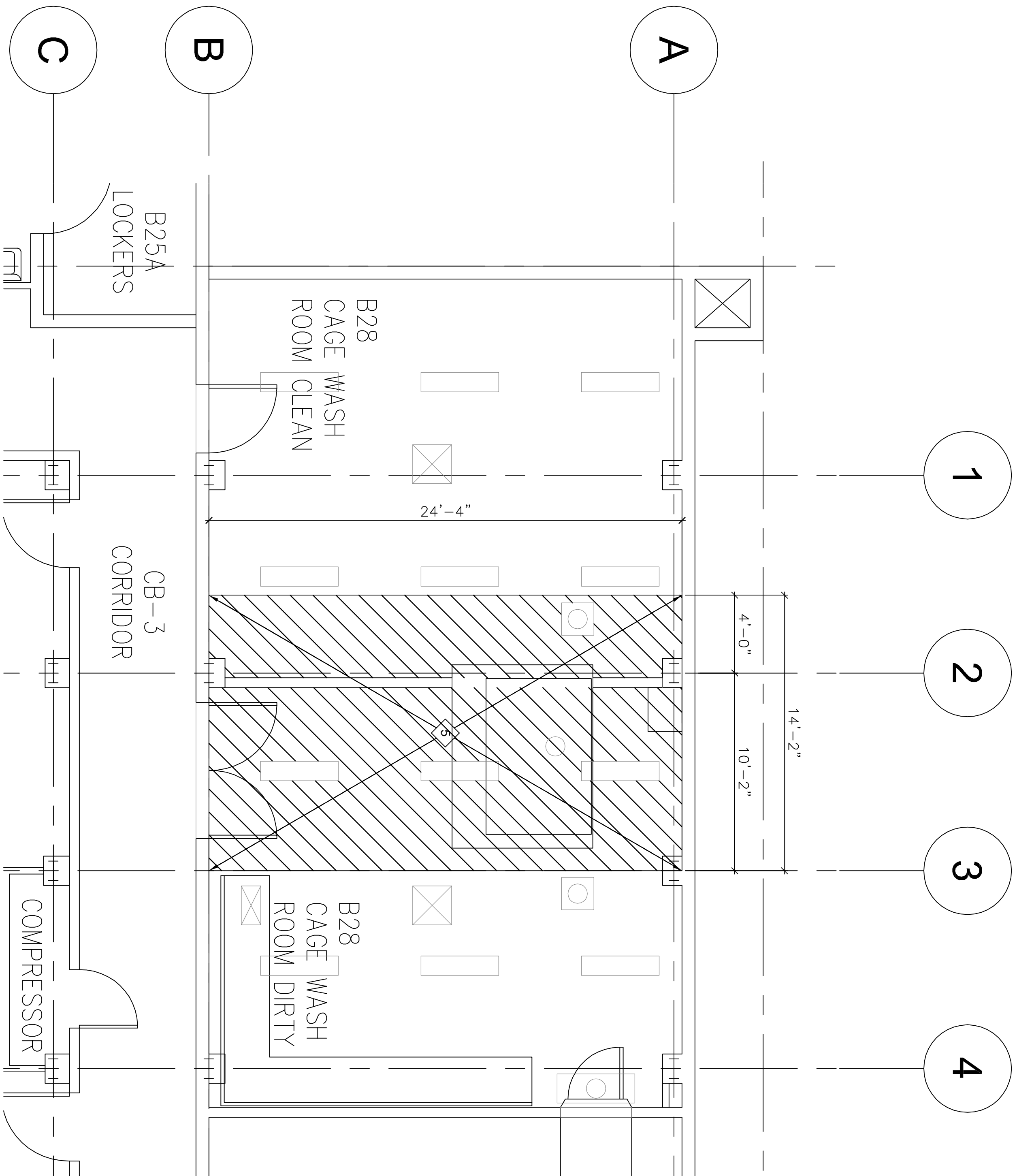
KEY NOTES

- NEW SECTION OF WALL (STUDS & DRYWALL) TO MATCH EXISTING. WALL OPENINGS DIMENSIONS ARE 90" WIDE x 100" HIGH (7'-6"x8'-4") CONTRACTOR TO COORDINATE POSITION OF WALL OPENING WITH ALIGNMENT OF PIT AND CASE WASHER EQUIPMENT. COAT ENTIRE WALL WITH WHITE RESINOUS PAINT.
- NEW PIT SEE 6/A2.3 FOR PIT DETAILS.
- NEW CONCRETE SLAB ON VAPOR BARRIER.
- NEW CONC. PAD (4" HT) FOR EQUIPMENT.
- FLOOR FINISH: APPLY NEW RESINOUS FLOORING WITH CONTINUOUS COVE BASE 6" HIGH.
- CEILING: PROVIDE NEW PLASTER CEILING AND WHITE RESINOUS PAINT ENTIRE CEILING AREA FOR UNIFORM APPEARANCE.
- ACCESS PANELS: COORDINATE FINAL LOCATION WITH EQUIPMENT AND UTILITY REQUIREMENTS. (1) 24"x24", (1) 24"x48".

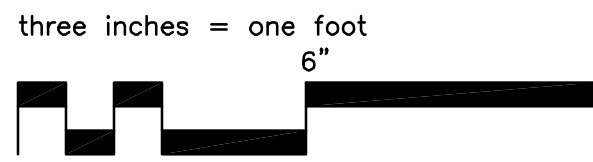
ARCHITECT/ENGINEERS		ARCHITECT/ENGINEER		Drawing Title		Project Title		Project Number		Office of Facilities Management	
Schwab Engineering & Management A Certified SB/DVBE Firm 1000 E. Walnut Street, Suite 227, Pasadena, CA 91106 T: 888.900.3623 F: 626.453.2759 www.schwabeng.com		[Seal]		ENLARGED BASEMENT RENOVATION PLANS		B138 SITE PREP FOR REPLACEMENT OF CAGE WASHER		600-13-137			
Revisions		Date		Approved Project Director		Location		Drawing Number		Department of Veterans Affairs	
						5901 EAST SEVENTH ST. LONG BEACH, CA 90822		A2.2			
						Date		Checked		Drawn	
						February 21, 2014		DN		AB	
								Dwg 6 of 21			



 Department of  
Veterans Affairs



- 5 REMOVE SECTION OF LATH & PLASTER CEILING.



1 SCALE: 1/4" = 1'-0"



2  
SCALE: 1/4" = 1'-0"

