

Mounting:

SURFACE

PANEL:

"BLC-B" (EXISTING)

LOCATION: BASEMENT MAIN ELECT. RM.

VOLTAGE:

208Y/120V, 3PH, 4W

MIN. AIC SYM:

10,000

225 AMP BUS

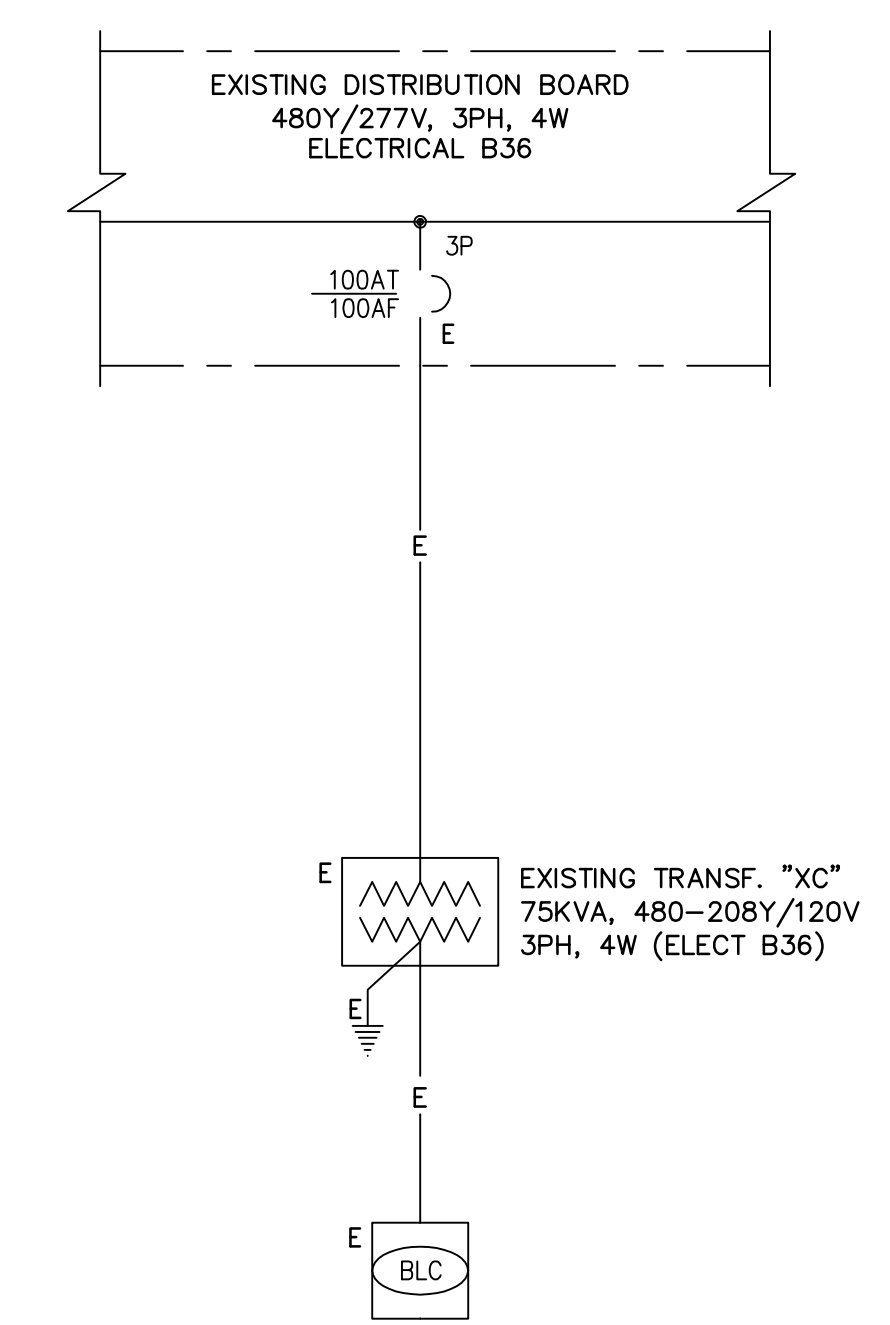
225A-3P MAIN

C.B.

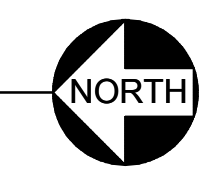
DESCRIPTION	VOLT-AMPERES			L T G	R E C	P H A S E	C I R C U I T	B R K E R	C I R C U I T	B R K E R	L T G	R E C	P H A S E	C I R C U I T	B R K E R	VOLT-AMPERES			DESCRIPTION				
	PHASE A	PHASE B	PHASE C													PHASE A	PHASE B	PHASE C					
(F) SPARE							3	30	1	2	20	1				540			(F) RECEPTACLES				
----							-	3	4	20	1							600	(F) TJS350 PANEL				
----							-	5	6	20	1							720	(F) RECEPTACLES				
(F) DRYER	2200						2	30	7	8	20	1				720			(F) RECEPTACLES				
----		2200					-	9	10	20	1							520	(F) RECEPTACLES				
(F) WASHER			1500				1	20	11	12	20	1						520	(F) RECEPTACLES				
(F) STERILIZER	1200						1	20	13	14	20	1				1000			(F) BATTERY CHARGER-GENSET				
(F) SPARE							1	20	15	16	20	1						1200	(F) HEATERS-GENSET				
(F) SPARE							1	20	17	18	20	1						1200	(F) HEATERS-GENSET				
NEW CAGE WASHER (*)	3000						1	3	40	19	20	30	3			2200			(F) GARBAGE DISP. RM. B28				
----		3000					-	21	22	-	-	-	-	-	-			2200	----				
----			3000				-	23	24	-	-	-	-	-	-			2200	----				
(F) LTCP-8	900						1	20	25	26	-	1							(F) SPACE				
(F) RADIOLOGY		1000					2	20	27	28	-	1							(F) SPACE				
----			1000				-	29	30	-	1								(F) SPACE				
(F) WASHER STATION	1000						3	20	31	32	50	3				2500			(F) GARBAGE DISP. RM. B28				
----		1600					-	33	34	-	-	-	-	-	-			2500	----				
----			1600				-	35	36	-	-	-	-	-	-			2500	----				
(F) SUB-PNL "BLC-B"	5000						3	100	37	38	-	1							(F) SPACE				
----		5000					-	39	40	-	1								(F) SPACE				
----			5000				-	41	42	-	1								(F) SPACE				
VA PER PHASE	13900	13800	12100													6960	6920	7140	VA PER PHASE				
CONTINUOUS LOAD																TOTAL VA PER PHASE				20880			
+ OTHER =																59820							
TOTAL LOAD =																59820		VA					
																166.01 AMPS @ 208Y/120volts, 3Ph, 4W							

4/10/24 11:36

NOTE:
(*) PROVIDE NEW 40A-3P BRANCH CIRCUIT BREAKER IN PLACE OF EXISTING BEING REMOVED. NEW "CAGE WASHER" ELECTRICAL LOAD IS LESS THAN THE EXISTING BEING REMOVED. THEREFORE, EXISTING PANEL "BLC" CAN CARRY THE TOTAL LOAD WITHOUT OVERLOADING



1 ELECTRICAL BASEMENT OVERALL PLAN
SCALE : 1/8" = 1'-0"



2 ONE LINE DIAGRAM
NTS

[illegible]