

GENERAL NOTES

1

KEY NOTE SYMBOL

1 2

MULTIPLE KEY NOTES APPLYING TO THE SAME ITEM

2
XXX

DETAIL NUMBER

XXX

DRAWING NUMBER WHERE DRAWN

A
XXX

SECTION LETTER

XXX

DRAWING NUMBER WHERE SHOWN

26-P 3

BUILDING NO. WHERE EQUIPMENT IS LOCATED.

EQUIPMENT ABBREVIATION (PUMP)

PUMP NO. 3 IN BUILDING NO. 26

TYPICAL UNIT NO.

SAN
1

PIPE SYSTEM

1

RISER NUMBER

1. THE CONTRACTOR SHALL VERIFY ALL DIMENSIONS, ELEVATIONS, INVERTS, PIPE SIZES AND MATERIALS, FLUID FLOW DIRECTION(S) AND CONDITIONS AT THE SITE AND REPORT ANY DISCREPANCIES TO THE ENGINEER PRIOR TO BEGINNING INSTALLATION OR FABRICATION WORK. (DO NOT SCALE DRAWINGS).
2. THE CONTRACTOR IS RESPONSIBLE FOR ANY DAMAGE TO EXISTING UTILITIES EVEN IF THE UTILITIES ARE NOT SHOWN ON THE DRAWINGS. THE CONTRACTOR SHALL REPAIR ALL DAMAGES AT THEIR OWN EXPENSE AND WILL BE RESPONSIBLE FOR ANY ADDITIONAL DAMAGES CAUSED BY A SYSTEM BEING DOWN.
3. THIS INSTALLATION WILL CONFORM TO ALL CODES AND THE REQUIREMENTS OF FEDERAL, STATE, AND LOCAL REGULATORY AGENCIES HAVING JURISDICTION.
4. INSTALL ALL PRODUCTS IN ACCORDANCE WITH THE MANUFACTURERS RECOMMENDATIONS, CONTRACT DOCUMENTS AND THE APPLICABLE CODES, STANDARDS AND REGULATIONS.
5. THE CONTRACTOR WILL BE RESPONSIBLE FOR ENSURING THAT ALL RULES AND REGULATIONS, INCLUDING THOSE WHICH MAY BE ISSUED BY THE OWNER, ARE BEING OBSERVED, ENFORCED, AND PROMPTLY ENFORCED. THE CONTRACTOR SHALL BE RESPONSIBLE FOR THE SAFETY AND INDIRECTLY BY HIM ON THE PREMISES, AND THE OWNER'S EMPLOYEES WHO MAY BE IMPACTED OR AFFECTED BY CONTRACTOR ACTIVITIES. THE CONTRACTOR WILL INSTALL SIGNAGE, TEMPORARY FENCES, BARRIERS, AND OTHER MEANS TO PROVIDE WARNING AND TEMPORAL SAFETY. PLACEMENT OF THESE ITEMS WILL BE COORDINATED WITH THE OWNER AND HIS ONGOING OPERATIONS AND WILL PROMPTLY BE REVISED WHEN WORK IN A PARTICULAR AREA HAS BEEN COMPLETED.
6. ALL WORK WILL BE LAWFULLY EXECUTED IN A NEAT AND WORKMANLIKE MANNER AND WILL BE DONE IN ACCORDANCE WITH THE GOVERNING CODES, INDUSTRY STANDARDS AND IN CONFORMANCE WITH THE MANUFACTURERS RECOMMENDATIONS AND REQUIREMENTS.
7. WORK UNDER THIS CONTRACT SHALL CONSIST OF THE CONTRACTOR PROVIDING ALL LABOR, MATERIALS, AND SERVICES, INCLUDING WORK NOT SPECIFICALLY SHOWN BUT REASONABLY IMPLIED.
8. WORK ALL DRAWINGS WITH THE PROJECT SPECIFICATIONS.
9. PIPING SHOWN ON RESPECTIVE PLANS OCCURS ABOVE THAT FLOOR OR AT THE CEILING OF THAT FLOOR SERVING THE FLOOR ABOVE UNLESS OTHERWISE NOTED.
10. PIPING RUNNING WITH A STORY IS DESIGNATED AS "RISE". PIPING RISING TO ANOTHER STORY IS NOTED AS "UP". PIPING DROPPING WITHIN A STORY IS NOTED AS "DROP". PIPING DROPPING TO ANOTHER STORY IS NOTED AS "DN".

1. ALL PIPING MATERIALS AND COMPONENTS INCLUDING FITTINGS, PIPE, FLANGES, VALVES, ETC. SHALL BE DESIGNATED, FABRICATED AND INSTALLED PER THE APPROPRIATE SECTIONS OF THE LATEST CODES, VETERAN'S AFFAIRS PLUMBING STANDARDS AND PROJECT CONTRACT DOCUMENTS.
2. ALL SANITARY SEWERS 3" AND SMALLER SHALL SLOPE 1/4" PER FOOT (MIN), ALL SANITARY SEWERS 4" AND LARGER SHALL SLOPE 1/8" PER FOOT (MIN) IN THE DIRECTION OF FLOW.
3. ALL HORIZONTALLY ROUTED WASTE VENTS SHALL BE INSTALLED WITH A SLOPE TO FACILITATE GRAVITY DRAINAGE TO THE WASTE SYSTEM.
4. ALL CLEANOUTS INSTALLED IN THE SEWER SYSTEM SHALL BE SIZED AS FOLLOWS:

PIPE SIZE	SIZE OF CLEANOUT
2"	2"
2 1/2"	2 1/2"
3"	3"
4-6"	4"
5. CLEANOUTS INSTALLED IN HORIZONTAL DRAINAGE PIPING SHALL BE SPACED AT INTERVALS NOT EXCEEDING 100'.
6. THE MAXIMUM VERTICAL DISTANCE FROM THE FIXTURE OUTLET (LAVATORY, FLOOR DRAIN ETC.) TO THE TRAP WEIR SHALL BE 24".
7. SURFACES TO BE SOLDERED SHALL BE CLEANED BRIGHT. THE JOINTS SHALL BE PROPERLY FLUXED AND MADE WITH APPROVED SOLDER. SOLDER JOINTS FOR POTABLE WATER SHALL BE MADE WITH A SOLDER CONTAINING NOT MORE THAN 0.2 PERCENT LEAD.
8. UNIONS SHALL BE INSTALLED AT ALL EQUIPMENT. THE USE OF DIELECTRIC UNIONS AND FLANGES MUST BE INSTALLED IN AREAS WHERE JOINING OF DISSIMILAR METALS (ie CARBON STEEL TO COPPER OR BRONZE, ETC.) THIS IS TO FACILITATE PIPING REMOVAL AND REASSEMBLY FOR FUTURE MAINTENANCE WORK AND/OR PREVENT GALVANIC CORROSION.
9. CONTRACTOR SHALL PROPERLY BRACE, ANCHOR, AND SUPPORT ALL PIPING, VALVES ETC. IN ACCORDANCE WITH MSS SP-58.
10. PIPE SUPPORT SPACING SHALL BE IN ACCORDANCE WITH MSS-58.
11. ALL POTABLE WATER BRANCHES SHALL BE INSTALLED WITH ISOLATION VALVES CLOSE TO MAIN WATER SUPPLY.
12. ALL PLUMBING FIXTURES SHALL BE PROVIDED WITH WATER ISOLATION VALVES.
13. CONTRACTOR SHALL PROVIDE WALL ACCESS COVERS TO ALL CLEANOUTS AND VALVES LOCATED WITHIN WALLS.
14. ALL WATER SUPPLY AND DRAIN PIPES UNDER LAVATORIES SHALL BE PROTECTED IN ACCORDANCE WITH VETERAN'S AFFAIRS STANDARDS.
15. ALL PIPES OR TUBING WHICH PASS THROUGH RATE- AND NON-RATE- RATED WALLS, FLOORS AND FOUNDATION WALLS, SHALL PASS THROUGH A SCHEDULE 40 CARBON STEEL PIPE SLEEVE. SLEEVES WHICH PASS THROUGH MASONRY SHALL BE GALVANIZED COATED. ALL SLEEVES SHALL BE INSTALLED FLUSH ON BOTH SIDES OF WALL PENETRATION.

NON-RATE RATED: THE SLEEVE SHALL BE SIZED TO ALLOW FREE PASSAGE OF INSULATED AND NON-INSULATED PIPES AND TUBING.

RATE RATED WALLS: PIPES WHICH PASS THROUGH FIRE-RATED WALLS & FLOOR SHALL USE THE APPROPRIATE CODE APPROVED, TESTED AND INSTALLATION METHOD OF SEALING WHILE MAINTAINING THE INTEGRITY OF THE WALL'S FIRE RATING(S).

FOUNDATION WALLS & FOUNDATION: PIPES WHICH PASS THROUGH EXTENSION WALLS OR FOUNDATION WALLS SHALL BE SEALED AND MADE WEATHER-TIGHT.
16. INSULATE COLD AND HOT WATER PIPING PER THE PROJECT DOCUMENTS WITH FIRE RETARDANT VAPOR BARRIER JACKET. WATER INSULATION SHALL BE SEALED WITH A FIRE RESISTIVE ADHESIVE.
17. CONTRACTOR IS RESPONSIBLE FOR ALL TESTING AND COORDINATION OF INSPECTIONS OF THE ENTIRE POTABLE WATER, SANITARY SEWER AND VENT SYSTEMS. TESTING SHALL BE IN ACCORDANCE WITH THE VETERAN'S AFFAIRS STANDARDS AND THE INTERNATIONAL PLUMBING CODE.
18. ALL PIPING AND VALVES SHALL BE PROPERLY IDENTIFIED, LABELED AND TAGGED.
19. CONTRACTOR SHALL FLUSH AND DISINFECT THE ENTIRE POTABLE WATER SYSTEM FLUSHING AND DISINFECTION OF THE POTABLE WATER SYSTEM SHALL BE IN ACCORDANCE WITH THE VETERAN'S AFFAIRS STANDARDS AND THE INTERNATIONAL PLUMBING CODE.
20. PROVIDE THREE (3) ELBOW SWING JOINTS FOR ALL DOMESTIC HOT WATER CONNECTIONS TO THE MAIN.
21. CONTRACTOR SHALL PROVIDE AND INSTALL THERMAL EXPANSION/CONTRACTION COMPENSATION IN THE DOMESTIC HOT WATER AND RECIRCULATION SYSTEMS, LIMITING THE MAXIMUM MOVEMENT TO 1 1/2" OR LESS. ANCHORS & RESTRAINTS SHALL BE INSTALLED WHERE REQUIRED TO ADVANCE FIRE RATED WALLS AND FLOORS. ALL PIPES SHALL BE PROPERLY JOINTED TO THE THERMAL EXPANSION LOOPS OR COMPENSATORS.

 Department of
Veterans Affairs

GENERAL SHEET NOTES:

1. REFER TO SHEET P0.01 FOR PLUMBING GENERAL NOTES, SYMBOLS AND ABBREVIATIONS.

SHEET KEYNOTES:

DEMOLITION

- EXISTING STORM DRAINAGE PIPING TO REMAIN.
- EXISTING PLUMBING FIXTURES AND ASSOCIATED SUPPORTS DCW, DHW, SAN AND VENT PIPING TO BE REMOVED.
- EXISTING SHOWER FLOOR DRAIN TO BE REMOVED. REFER TO ARCHITECTURAL DRAWINGS FOR REPAIR OF EXISTING CONCRETE FLOOR.
- EXISTING DCW, DHW, DHWR, SANITARY AND VENT RISERS TO BE REMOVED. CUT EXISTING PIPING IN CEILING BELOW AND 3/4" DCW & DHW IN THIRD FLOOR CEILING FOR PENTHOUSE SUPPLY AND VENT THRU ROOF TO REMAIN.
- EXISTING DCW, DHW, DHWR, SANITARY AND VENT RISERS TO BE REMOVED. CUT EXISTING PIPING IN CEILING BELOW. CAP EXISTING DCW RISER IN CEILING BELOW. EXISTING VENT THRU ROOF TO REMAIN.
- EXISTING DCW, DHW, DHWR, SANITARY AND VENT RISERS TO BE REMOVED. CUT EXISTING PIPING IN CEILING BELOW. EXISTING VENT THRU ROOF TO REMAIN.
- EXISTING STORM RISER TO BE REMOVED. CONNECT NEW STORM DRAIN TO EXISTING STORM RISER IN CEILING BELOW AND CONNECT NEW/RELOCATED STORM RISER TO EXISTING STORM DRAIN IN CEILING.
- EXISTING MEDICAL GAS ZONE VALVE BOX AND PIPING TO BE REMOVED.
- EXISTING PIPING FOR PENTHOUSE SINK TO BE REMOVED AND BRANCH PIPING CAPPED AT MAIN TO REMAIN.
- EXISTING CAPPED PIPING TO REMOVED PLUMBING FIXTURES TO BE REMOVED.

NEW WORK

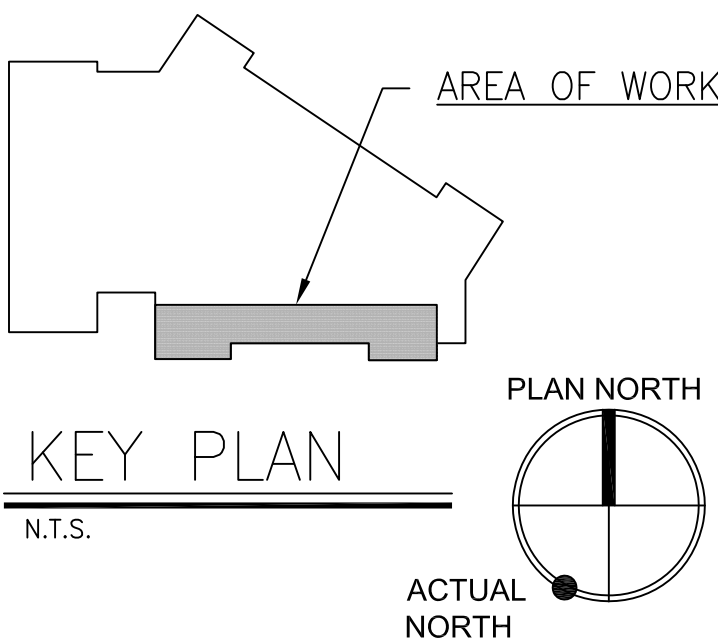
- A. EXISTING STORM DRAINAGE PIPING TO REMAIN.
- B. CONNECT 3/4" DCW, 3/4" DHW & 1/2" DHWR TO EXISTING RISERS IN CEILING BELOW.
- C. CONNECT 3/4" DCW & 3/4" DHW TO EXISTING SUPPLY PIPING UP TO PENTHOUSE.
- D. 1/2" DHWR, 3/4" DHW, 3/4" DCW, 3" VENT RISE & DN.
- E. CONNECT 3" VENT TO EXISTING SAN STACK AND VENT RISERS IN CEILING OF FLOOR BELOW AND CONNECT TO EXISTING VTR.
- F. CONNECT 3" SD TO EXISTING 3" SD RISER IN CEILING OF FLOOR BELOW.
- G. 3" SD & 4" VENT RISE & DN.
- H. CONNECT 1/2" DHWR TO EXISTING DHW & DHWR RISERS IN CEILING OF FLOOR BELOW.
- I. CONNECT 1-1/2" DCW, 3/4" DHW & 1/2" DHWR TO EXISTING RISERS IN CEILING BELOW.
- J. 1-1/2" DCW, 3/4" DHW & 1/2" DHWR RISE & DN.
- K. CONNECT 4" SAN & 4" VENT TO EXISTING RISERS IN CEILING OF FLOOR BELOW AND CONNECT TO EXISTING VTR.
- L. 1/2" DCW & 1/2" DHW DROP, 1-1/2" SAN DN & 1-1/2" VENT RISE
- M. 4" SAN DN & VENT RISE, 4" VENT RISE & DN
- N. 1-1/2" DCW & 1/2" DHW DROP
- O. 1-1/2" DCW DROP, 4" SAN DN & 2" VENT RISE
- P. PROVIDE NEW 3" VTR, MAINTAIN CODE REQUIRED CLEARANCE FROM PENTHOUSE AIR INTAKES.

1 PARTIAL THIRD FLOOR PLAN - DEMOLITION

SCALE: 1/4" = 1'-0"

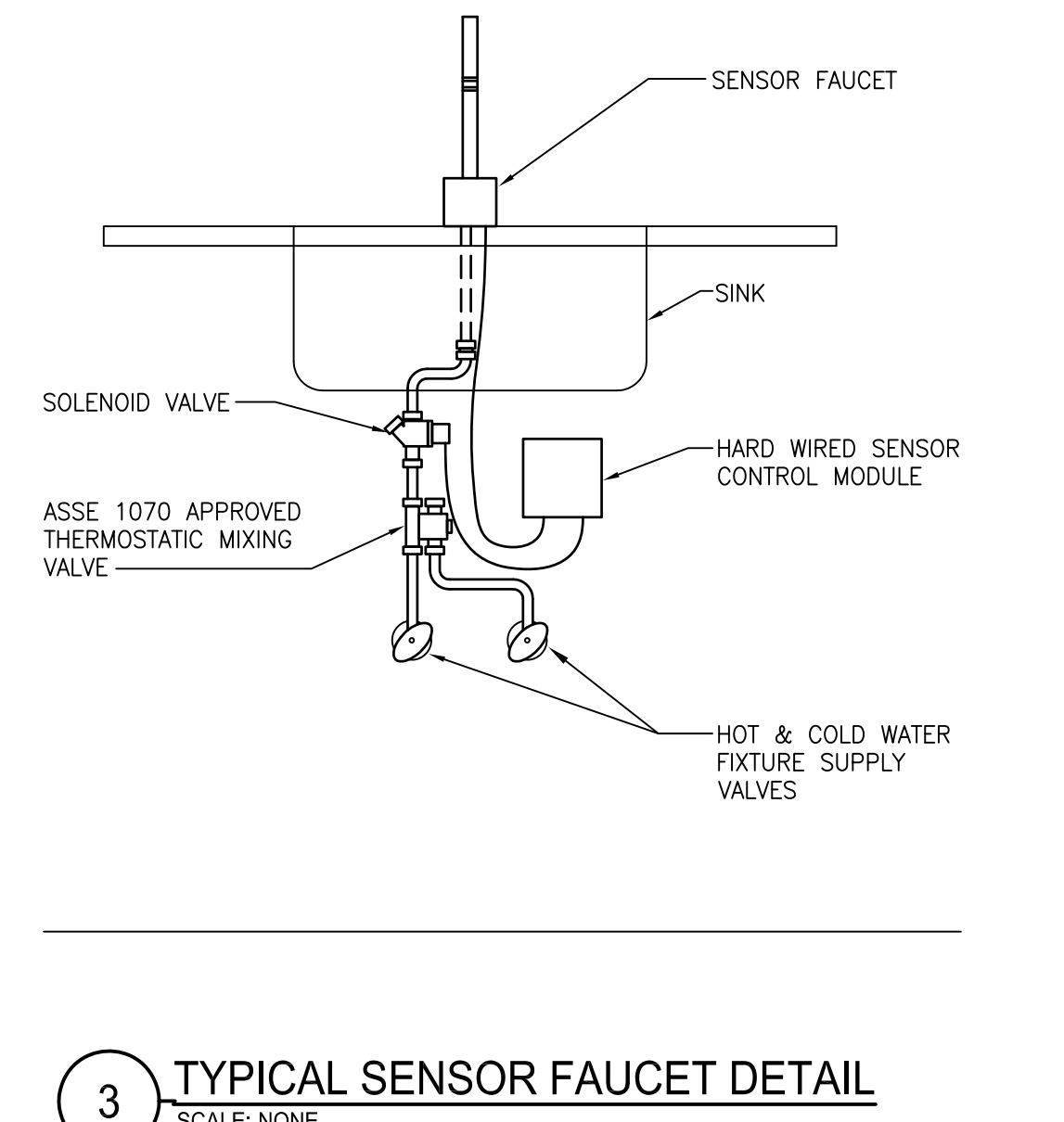
2 PARTIAL THIRD FLOOR PLAN - NEW WORK

SCALE: 1/4" = 1'-0"



100% CONSTRUCTION DOCUMENTS
FULLY SPRINKLERED

--	--	--	--	--	--	--	--	--	--	--	--	--	--	--	--	--	--	--	--	--	--	--	--	--	--	--	--	--	--	--	--	--	--	--	--	--	--	--	--	--	--	--	--	--	--	--	--	--	--	--	--	--	--	--	--	--	--	--	--	--	--	--	--	--	--	--	--	--	--	--	--	--	--	--	--	--	--	--	--	--	--	--	--	--	--	--	--	--	--	--	--	--	--	--	--	--	--	--	--	--	--	--	--	--	--	--	--	--	--	--	--	--	--	--	--	--	--	--	--	--	--	--	--	--	--	--	--	--	--	--	--	--	--	--	--	--	--	--	--	--	--	--	--	--	--	--	--	--	--	--	--	--	--	--	--	--	--	--	--	--	--	--	--	--	--	--	--	--	--	--	--	--	--	--	--	--	--	--	--	--	--	--	--	--	--	--	--	--	--	--	--	--	--	--	--	--	--	--	--	--	--	--	--	--	--	--	--	--	--	--	--	--	--	--	--	--	--	--	--	--	--	--	--	--	--	--	--	--	--	--	--	--	--	--	--	--	--	--	--	--	--	--	--	--	--	--	--	--	--	--	--	--	--	--	--	--	--	--	--	--	--	--	--	--	--	--	--	--	--	--	--	--	--	--	--	--	--	--	--	--	--	--	--	--	--	--	--	--	--	--	--	--	--	--	--	--	--	--	--	--	--	--	--	--	--	--	--	--	--	--	--	--	--	--	--	--	--	--	--	--	--	--	--	--	--	--	--	--	--	--	--	--	--	--	--	--	--	--	--	--	--	--	--	--	--	--	--	--	--	--	--	--	--	--	--	--	--	--	--	--	--	--	--	--	--	--	--	--	--	--	--	--	--	--	--	--	--	--	--	--	--	--	--	--	--	--	--	--	--	--	--	--	--	--	--	--	--	--	--	--	--	--	--	--	--	--	--	--	--	--	--	--	--	--	--	--	--	--	--	--	--	--	--	--	--	--	--	--	--	--	--	--	--	--	--	--	--	--	--	--	--	--	--	--	--	--	--	--	--	--	--	--	--	--	--	--	--	--	--	--	--	--	--	--	--	--	--	--	--	--	--	--	--	--	--	--	--	--	--	--	--	--	--	--	--	--	--	--	--	--	--	--	--	--	--	--	--	--	--	--	--	--	--	--	--	--	--	--	--	--	--	--	--	--	--	--	--	--	--	--	--	--	--	--	--	--	--	--	--	--	--	--	--	--	--	--	--	--	--	--	--	--	--	--	--	--	--	--	--	--	--	--	--	--	--	--	--	--	--	--	--	--	--	--	--	--	--	--	--	--	--	--	--	--	--	--	--	--	--	--	--	--	--	--	--	--	--	--	--	--	--	--	--	--	--	--	--	--	--	--	--	--	--	--	--	--	--	--	--	--	--	--	--	--	--	--	--	--	--	--	--	--	--	--	--	--	--	--	--	--	--	--	--	--	--	--	--	--	--	--	--	--	--	--	--	--	--	--	--	--	--	--	--	--	--	--	--	--	--	--	--	--	--	--	--	--	--	--	--	--	--	--	--	--	--	--	--	--	--	--	--	--	--	--	--	--	--	--	--	--	--	--	--	--	--	--	--	--	--	--	--	--	--	--	--	--	--	--	--	--	--	--	--	--	--	--	--	--	--	--	--	--	--	--	--	--	--	--	--	--	--	--	--	--	--	--	--	--	--	--	--	--	--	--	--	--	--	--	--	--	--	--	--	--	--	--	--	--	--	--	--	--	--	--	--	--	--	--	--	--	--	--	--	--	--	--	--	--	--	--	--	--	--	--	--	--	--	--	--	--	--	--	--	--	--	--	--	--	--	--	--	--	--	--	--	--	--	--	--	--	--	--	--	--	--	--	--	--	--	--	--	--	--	--	--	--	--	--	--	--	--	--	--	--	--	--	--	--	--	--	--	--	--	--	--	--	--	--	--	--	--	--	--	--	--	--	--	--	--	--	--	--	--	--	--	--	--	--	--	--	--	--	--	--	--	--	--	--	--	--	--	--	--	--	--	--	--	--	--	--	--	--	--	--	--	--	--	--	--	--	--	--	--	--	--	--	--	--	--	--	--	--	--	--	--	--	--	--	--	--	--	--	--	--	--	--	--	--	--	--	--	--	--	--	--	--	--	--	--	--	--	--	--	--	--	--	--	--	--	--	--	--	--	--	--	--	--	--	--	--	--	--	--	--	--	--	--	--	--	--	--	--	--	--	--	--	--	--	--	--	--	--	--	--	--	--	--	--	--	--	--	--	--	--	--	--	--	--	--	--	--	--	--	--	--	--	--	--	--	--	--	--	--	--	--	--	--	--	--	--	--	--	--	--	--	--	--	--	--	--	--	--	--	--	--	--	--	--	--	--	--	--	--	--	--	--	--	--	--	--	--	--	--	--	--	--	--	--	--	--	--	--	--	--	--	--	--	--	--	--	--	--	--	--	--	--	--	--	--	--	--	--	--	--	--	--	--	--	--	--	--	--	--	--	--	--	--	--	--	--	--	--	--	--	--	--	--	--	--	--	--	--	--	--	--	--	--	--	--	--	--	--	--	--	--	--	--	--	--	--	--	--	--	--	--	--	--	--	--	--	--	--	--	--	--	--	--	--	--	--	--	--	--	--	--	--	--	--	--	--	--	--	--	--	--	--	--	--	--	--	--	--	--	--	--	--	--	--	--	--	--	--	--	--	--	--	--	--	--	--	--	--	--	--	--	--	--	--	--	--	--	--	--	--	--	--	--	--	--	--	--	--	--	--	--	--	--	--	--	--	--	--	--	--	--	--	--	--	--	--	--	--	--	--	--	--	--	--	--	--	--	--	--	--	--	--	--	--	--	--	--	--	--	--	--	--	--	--	--	--	--	--	--	--	--	--	--	--	--	--	--	--	--	--	--	--	--	--	--	--	--	--	--	--	--	--	--	--	--	--	--	--	--	--	--	--	--	--	--	--	--	--	--	--	--	--	--	--	--	--	--	--	--	--	--	--	--	--	--	--	--	--	--	--	--	--	--	--	--	--	--	--	--	--	--	--	--	--	--	--	--	--	--	--	--	--	--	--	--	--	--	--	--	--	--	--	--	--	--	--	--	--	--	--	--	--	--	--	--	--	--	--	--	--	--	--	--	--	--	--	--	--	--	--	--	--	--	--	--	--	--	--	--	--	--	--	--	--



MANUAL OVER-RIDE* BUTTON

ELECTRICAL BOXES

SENSOR

1" STOP

C/L OF FIXTURE

FINISHED WALL

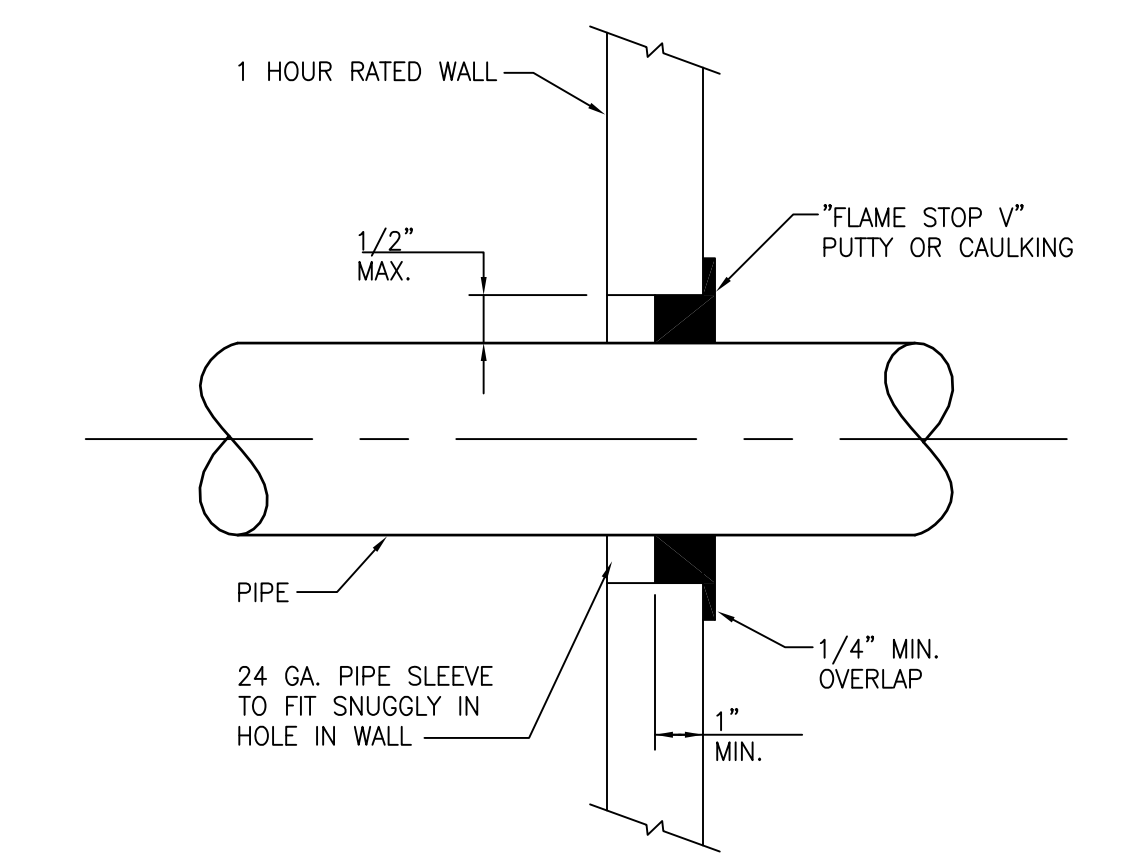
FINISHED FLOOR

UNLESS OTHERWISE NOTED ON ARCHITECTURAL DRAWINGS

24 VOLT TRANSFORMER

2"

2 TYPICAL WATER CLOSET DETAIL
SCALE: NONE



1 TYPICAL VA WALL PENETRATION DETAIL
SCALE: NONE

100% CONSTRUCTION DOCUMENTS
FULLY SPRINKLERED

 Department of
Veterans Affairs