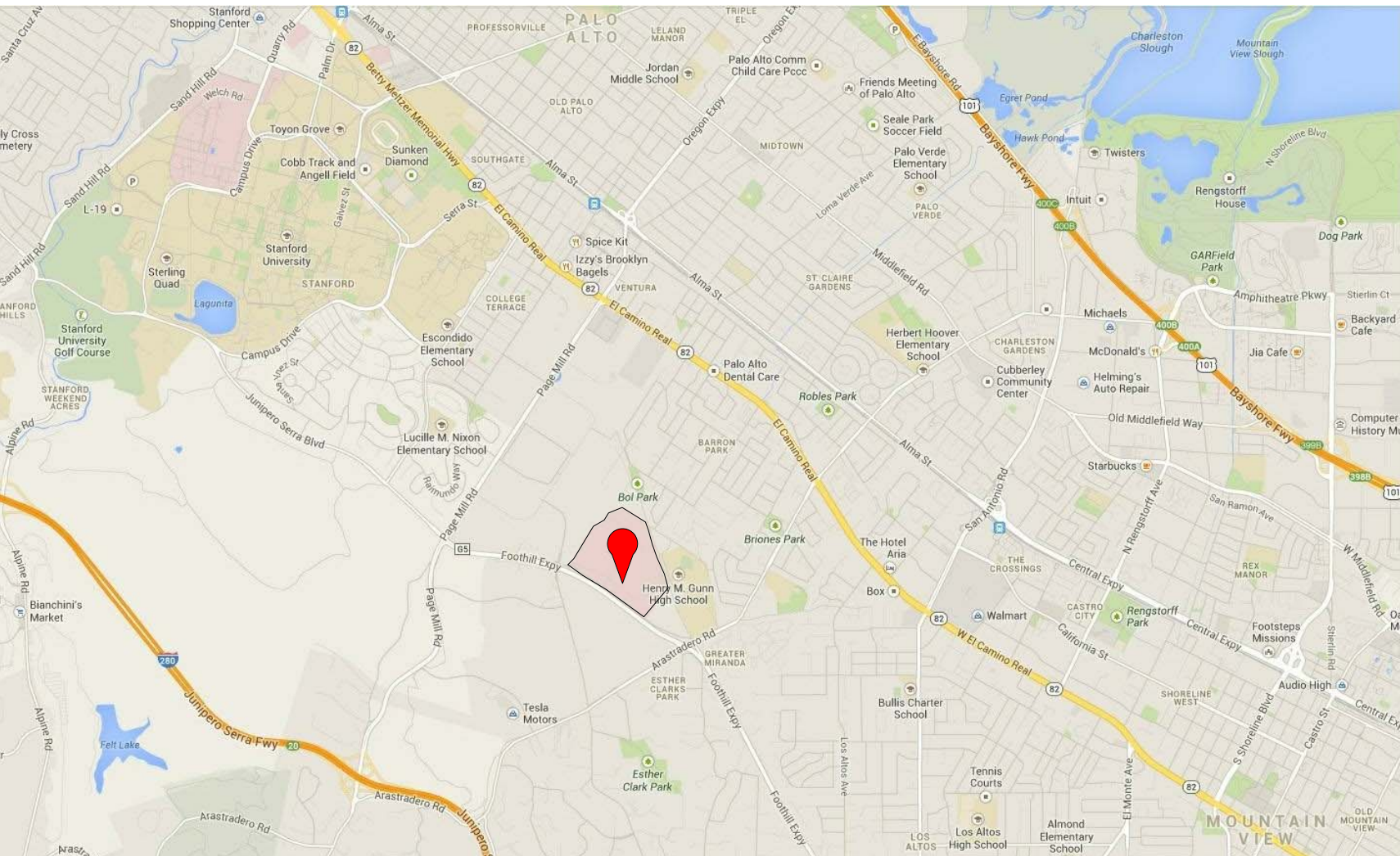




VICINITY MAP



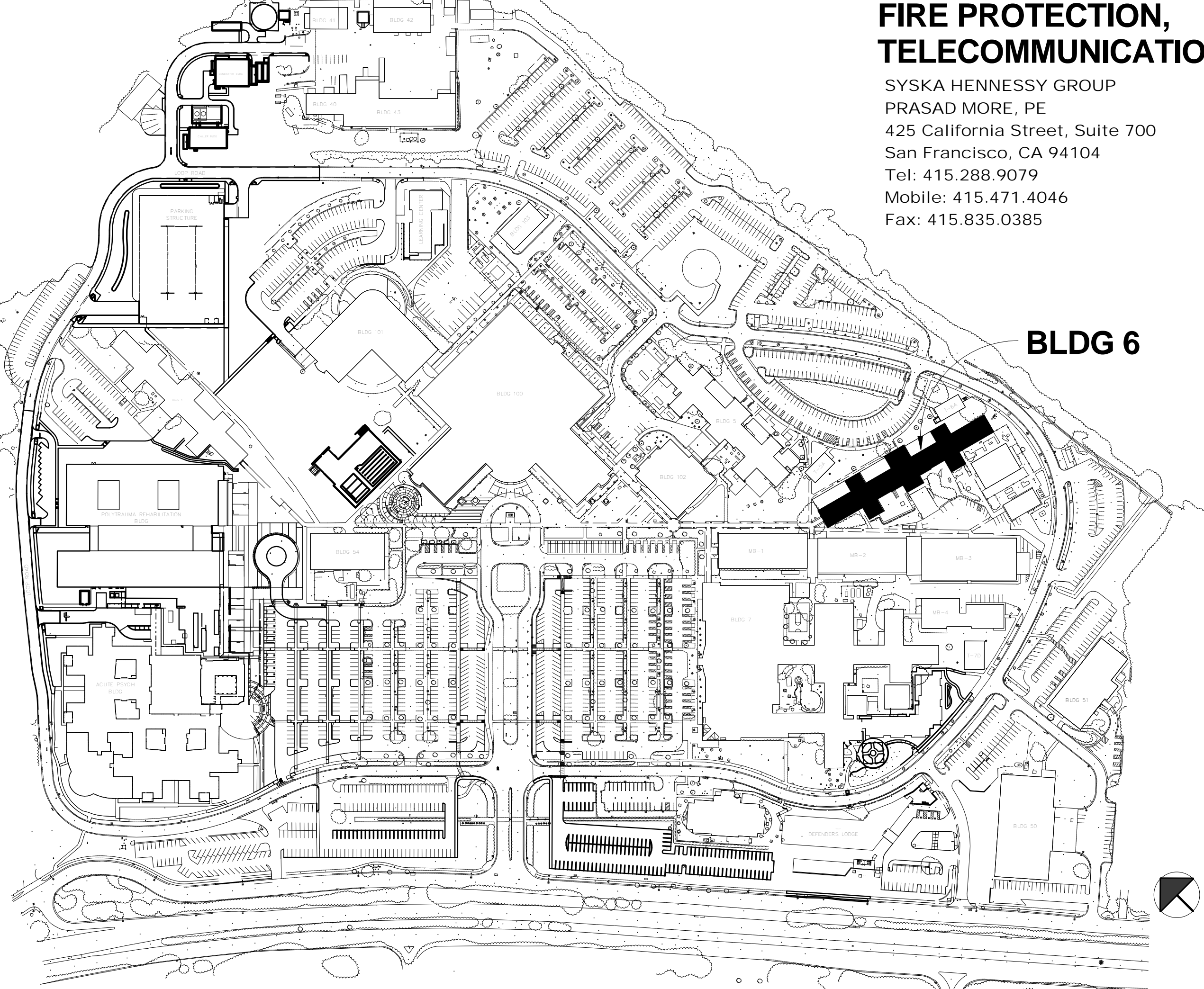
VA CONTACT

ARCHITECT

STRUCTURAL ENGINEER

BUEHLER & BUEHLER STRUCTURAL ENGINEERS
WILLIAM RADER, SE
600 Q Street, Suite 200
Sacramento, CA 95811
Tel: 916.443.0303
Fax: 916.443.0313

SYSKA HENNESSY GROUP
PRASAD MORE, PE
 425 California Street, Suite 700
 San Francisco, CA 94104
 Tel: 415.288.9079
 Mobile: 415.471.4046
 Fax: 415.835.0385

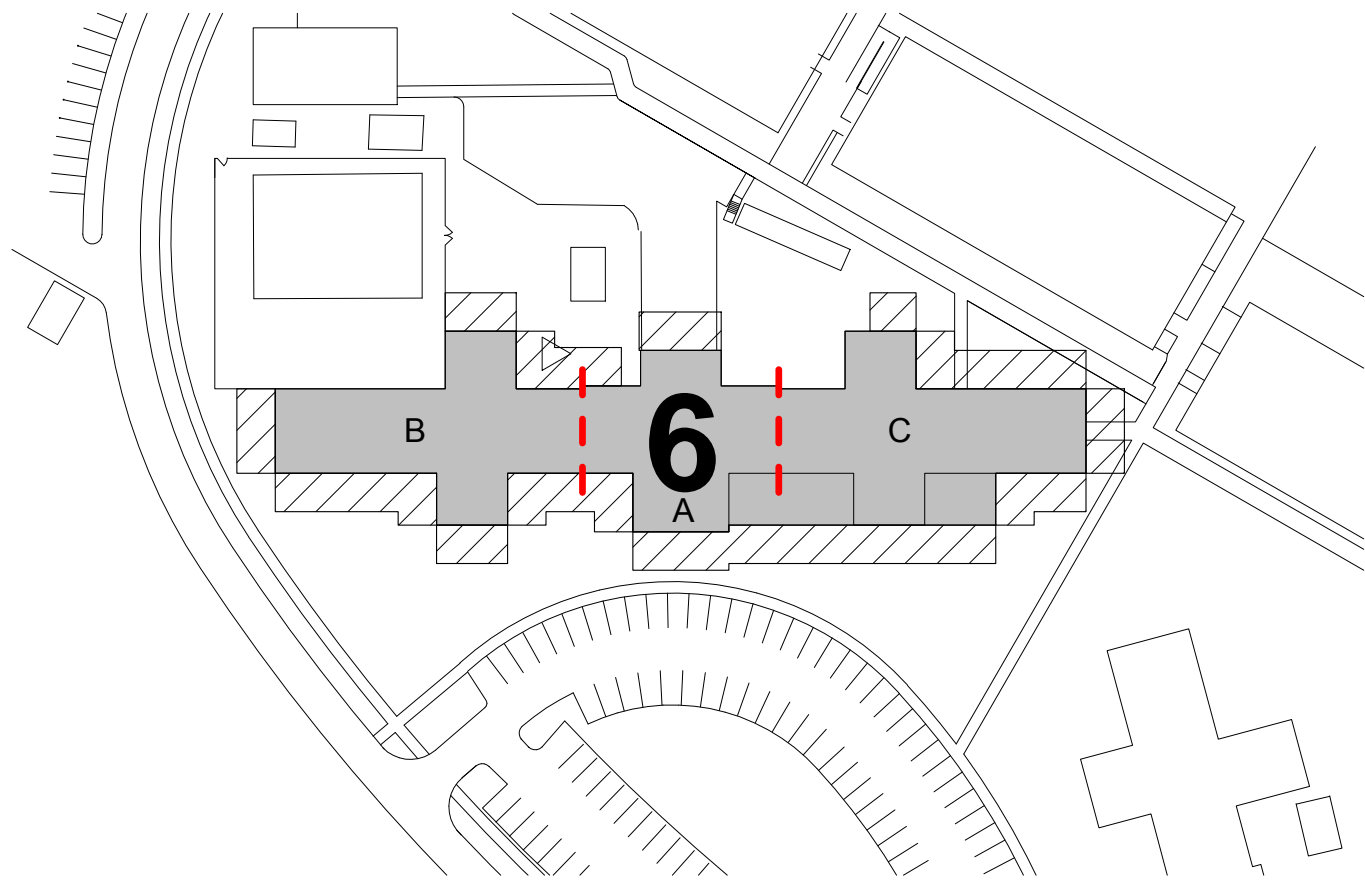


FINAL BID DOCUMENTS

[illegible]

BUILDING INFORMATION

BUILDING INFORMATION:	
OCCUPANCY:	Business
CONSTRUCTION TYPE:	Type II-B
FIRE SPRINKLERS:	Yes
BUILDING AREAS	
FIRST FLOOR:	29,859 SF
SECOND FLOOR:	25,271 SF
THIRD FLOOR:	25,270 SF
TOTAL:	80,400 SF
ALLOWABLE AREAS:	
IBC TABLE 503	23,000 SF
FRONTAGE INCREASE	133%
ALLOWABLE AREA, PER STORY	30,590 SF
TOTAL ALLOWABLE AREA	91,770 SF
ALLOWABLE BUILDING HEIGHT:	
OCCUPANCY	Business
IBC TABLE 503	3 STORIES (55 FEET)
ALLOWABLE HEIGHT	55 FEET
EXISTING BUILDING HEIGHT	41 FEET



PERIMETER OF BUILDING WITH NO LESS THAN 20 FEET OF FRONTAGE

PER 2012 IBC, SECTION 506.2, EQUATION 5-2

F = 982 feet
P = 1312 feet
W = 20 feet

Area increase due to frontage = 0.33

PER 2012 IBC, TABLE 503

CONSTRUCTION TYPE II-B	
Building area limitation per story	= 23,000 SF
Building area limitation per story including frontage increase	= 30,590 SF

PLUMBING FIXTURE COUNT

PER IBC 2012 - TABLE 2002.1

LEVEL	OCC LOAD	WATER CLOSETS				LAVATORY			
		1 PER 25 FOR FIRST 50 AND 1 PER 50 FOR REMAINDER EXCEEDING 50				1 PER 40 FOR FIRST 80 AND 1 PER 80 FOR THE REMAINDER EXCEEDING 80			
		# REQUIRED		# PROVIDED		# REQUIRED		# PROVIDED	
1, 2, 3	804	18	M	9	9	3	12	6	8
			F	9	17		12	6	14
			UNISEX		4				4

FOR PLAN VIEW, SEE A1.01A AND A1.02A

OCCUPANCY TABULATION SUMMARY (Administrative Expansion)				
Level	AREA *	Occupancy	Occupant AREA	O.L.
FIRST FLOOR	913	B	100 SF	10
	913			10

GENERAL NOTES

- DIMENSIONS OF EXISTING WORK ARE FROM FACE OF FINISH. DIMENSIONS OF NEW WORK ARE TO FACE OF STUD.
- BASEBOARD: REPLACE/PROVIDE NEW BASEBOARD AT NEW WALLS, AND AT NEW FLOORING.
- THE CONTRACTOR IS RESPONSIBLE FOR OBTAINING ALL NECESSARY PERMITS AND APPROVALS REQUIRED FROM REGULATING AGENCIES BEFORE STARTING ANY WORK.
- THE CONTRACTOR SHALL BE SOLELY AND COMPLETELY RESPONSIBLE FOR THE WORKING CONDITIONS AT THE JOB SITE, INCLUDING THE SAFETY OF ALL PERSONS AND PROPERTY. DO NOT SCALE THE DRAWINGS. WRITTEN DIMENSIONS SHALL TAKE PRECEDENCE OVER SCALED DIMENSIONS. IF ANY DISCREPANCIES OR OMISSIONS IN THE DIMENSIONS ARE DISCOVERED, THE CONTRACTOR SHALL NOTIFY THE CONTRACTING OFFICER IMMEDIATELY. ANY WORK DONE WITHOUT PROPER NOTIFICATION BEING GIVEN TO THE CONTRACTING OFFICER IS THE SOLE RESPONSIBILITY OF THE CONTRACTOR.
- THE CONTRACTOR IS RESPONSIBLE FOR CHECKING FIELD CONDITIONS PRIOR TO COMMENCEMENT OF WORK. THE CONTRACTOR SHALL REPORT ANY PROBLEMS TO THE VA COTR. CHANGES RESULTING FROM CONDITIONS ARISING IN THE FIELD WHICH ARE NOT BROUGHT TO THE ATTENTION OF THE VA COTR WILL NOT RESULT IN ANY ADDITIONAL COST TO THE CLIENT.
- THE GENERAL CONTRACTOR SHALL REVIEW ALL SUBMITTALS FROM SUBCONTRACTORS PRIOR TO SUBMITTING THEM TO ARCHITECT AND CONTRACTING OFFICER.
- THE CONTRACTOR SHALL MAINTAIN THE PREMISES IN A CLEAN AND ORDERLY MANNER. PATHS OF TRAVEL SHALL NOT BE BLOCKED. THE CONTRACTOR SHALL LEAVE AREA CLEAN AND FREE OF DEBRIS AT THE END OF EACH WORK DAY.
- THE CONTRACTOR SHALL BE RESPONSIBLE FOR REMOVING ALL LEFT OVER MATERIALS, DEBRIS, TOOLS AND EQUIPMENT USED IN THE CONSTRUCTION AT THE END OF THE PROJECT.
- ANY DAMAGE DONE BY THE CONTRACTOR TO THE EXISTING BUILDING, EQUIPMENT, OR FURNISHINGS SHALL BE PATCHED TO MATCH UNDAMAGED EXISTING ADJACENT CONSTRUCTION OR REPAIRED TO ORIGINAL CONDITION AND FUNCTION PRIOR TO DAMAGE. ALL SUCH PATCHING AND REPAIR SHALL BE DONE AT THE CONTRACTOR'S EXPENSE.
- CONTRACTOR TO COORDINATE ALL WORK OF ALL TRADES AND WORKING TIME AND METHODS WITH THE V.A. TO INSURE MINIMUM DISTURBANCE TO THE BUILDING FUNCTIONS WILL OCCUR.
- OTHER AREAS OF BUILDING WILL REMAIN OCCUPIED DURING CONSTRUCTION. WORK MAY NEED TO BE PERFORMED OUTSIDE REGULAR BUSINESS HOURS IF DEEMED DISRUPTIVE BY THE PROJECT MANAGER. COSTS ASSOCIATED WITH THIS REQUIREMENT SHALL BE INCLUDED IN THE BASE BID AND WILL NOT BE BILLABLE SEPARATELY TO THE CLIENT. BIDDERS SHALL COORDINATE WITH ON-SITE CLIENT PROJECT MANAGER PRIOR TO BIDDING.

APPLICABLE CODES & STANDARDS

ALL CONSTRUCTION WORK, ARCHITECTURAL, MECHANICAL, ELECTRICAL, FIRE PROTECTION, ETC. SHALL CONFORM TO THE MOST CURRENT ISSUE OF THE INTERNATIONAL BUILDING CODE, AND ANY APPLICABLE LOCAL, STATE AND FEDERAL CODES AND GUIDELINES.

- INTERNATIONAL BUILDING CODE (IBC)
- UNIFORM FEDERAL ACCESSIBILITY STANDARDS (UFAS)
- NATIONAL FIRE PROTECTION ASSOCIATION (NFPA)
- NFPA 1
- NFPA 13
- NFPA 98
- NFPA 99
- NFPA 101, 101A, & 101B LIFE SAFETY CODE
- NATIONAL ELECTRIC CODE (NEC) NFPA 70
- NATIONAL STANDARD PLUMBING CODE (NSPC)
- ASME MECHANICAL CODES
- ASHRAE STANDARD 62-2004
- OSHA
- VA BARRIER DESIGN GUIDE PG-18-03
- VA DESIGN GUIDES, MASTER SPECIFICATION & TECHNICAL INFORMATION AVAILABLE ON THE VA TECHNICAL INFORMATION (TIL) WEBSITE www.cfm.va.gov/til/
- HEALTH INSURANCE PORTABILITY AND ACCOUNTABILITY ACT OF 1996 (HIPAA)
- FACILITY GUIDELINES INSTITUTE (FGI) GUIDELINES FOR DESIGN AND CONSTRUCTION OF HEALTH CARE FACILITY

SYMBOLS

DEMOLISHED WALL

EXISTING WALL

NEW NON-RATED WALL

NEW 1 HOUR FIRE RATED ASSEMBLY

BOUNDARY OF WORK

F.O.F.

F.O.S.

DIMENSIONS FROM FACE OF FINISH TO FACE OF STUD WHERE NOTED

CENTERLINE OF COLUMN OR STUD, ETC.

AREAS OF NO WORK

ROOM NAME

ROOM NUMBER

C000

GRAPHIC SCALE

DOOR SYMBOL

FRAME TYPE

DOOR TYPE

DOOR MODIFICATION

DOOR SIZE

DOOR ID

WINDOW TAG

WORK POINT OR CONTROL POINT

REVISION (AREA OF REVISION IN CLOUD)

WALL OR PARTITION TYPE

SIGNAGE

DOOR

5" AT NEW DOORS U.O.N.

EQUIPMENT TAG

DETAIL INDICATOR

DETAIL

REFERENCE DRAWING NUMBER

ELEVATION INDICATOR, EXTERIOR

EXTERIOR ELEVATION IDENTIFICATION

REFERENCE DRAWING NUMBER

ELEVATION INDICATOR, INTERIOR

INTERIOR ELEVATION IDENTIFICATION

REFERENCE DRAWING NUMBER

BUILDING SECTION INDICATOR

SECTION IDENTIFICATION

REFERENCE DRAWING NUMBER

NORTH

NORTH ARROW

CONCRETE

EARTH

GRAVEL

STAINLESS STEEL

WOOD

GYP. BOARD

CERAMIC TILE (ELEVATION)

CERAMIC TILE (SECTION)

COUNTER TOP MATERIAL

BATT INSULATION

RIGID INSULATION

LEVEL 3 BALLISTIC FIBERGLASS

PROJECT DESCRIPTION

THIS PROJECT IS THE FIRST OF TWO PROJECTS INTENDED FOR VA PALO ALTO BUILDING 6 "C" WING. THIS PROJECT ADDS NEW ADMINISTRATIVE OFFICE SPACE FOR THE FACILITIES PLANNING DEPARTMENT. THE SUBSEQUENT PROJECT WILL RENOVATE THE INTERIOR OF THE EXISTING BUILDING FOR LAB SPACE, AND ADD ANOTHER EXPANSION THAT WILL TIE IN STRUCTURALLY WITH THIS PROJECT.

AREA OF WORK:
1,000 SF ADDITION

DRAWING INDEX

GENERAL (ADMIN)		FIRE PROTECTION (ADMIN)	
.G0.00A	COVER SHEET	FP0.10A	SITE PLAN
.G0.01A	TITLE SHEET	FP1.11A	PIPING PLAN
		FP1.31A	REFLECTED CEILING PLAN
		FP9.10A	NOTES & DETAILS
ARCHITECTURAL (ADMIN)		TELECOMMUNICATIONS (ADMIN)	
A0.01A	ABBREVIATIONS	T0.00A	TECHNOLOGY COVER SHEET
A0.02A	ACCESSIBILITY REQUIREMENTS	T1.00A	TECHNOLOGY OVERALL FLOOR PLAN
A0.03A	EGRESS DIAGRAM	T1.11A	TECHNOLOGY FIRST FLOOR PLAN
A1.00A	SITE PLAN	T2.11A	TECHNOLOGY FIRST FLOOR CEILING PLAN
A1.01A	OVERALL BUILDING PLANS	T5.01A	TECHNOLOGY DETAILS
A1.02A	OVERALL BUILDING PLANS	T6.01A	CONDUIT RISER DIAGRAM
A1.21A	FIRST FLOOR DEMOLITION PLAN	T6.02A	COPPER SINGLE LINE DIAGRAM
A1.31A	FIRST FLOOR DEMOLITION CEILING PLAN		
A2.11A	FIRST FLOOR PLAN		
A2.20A	ROOF PLAN		
A2.21A	FIRST FLOOR REFLECTED CEILING PLAN		
A3.10A	EXTERIOR ELEVATIONS		
A3.20A	BUILDING SECTIONS & WALL SECTIONS		
A5.10A	INTERIOR ELEVATIONS		
A8.10A	EXTERIOR DETAILS		
A9.10A	WINDOW, FINISH, SIGNAGE SCHEDULES		
A9.30A	WALL SCHEDULE & DETAILS		
A9.40A	CEILING ASSEMBLY DETAILS		
A9.60A	SIGNAGE TYPE DETAILS		
STRUCTURAL (ADMIN)			
S1.01A	GENERAL NOTES		
S1.02A	TYPICAL DETAILS		
S1.03A	INT MTL STUD DETAILS		
S1.04A	EXT MTL STUD DETAILS		
S2.01A	PARTIAL FOUNDATION PLAN		
S2.02A	PARTIAL ROOF FRAMING PLAN		
S3.01A	SECTIONS AND DETAILS		
S5.01A	STEEL DETAILS		
SE505A	ELECTRICAL DETAILS		
SM507A	MECHANICAL DETAILS		
MECHANICAL (ADMIN)			
M001A	SYMBOLS, NOTES AND ABBREVIATIONS		
M002A	MECHANICAL SCHEDULES		
M101A	MECHANICAL ADMIN FIRST FLOOR PLAN		
M102A	MECHANICAL ADMIN ROOF PLAN		
M501A	MECHANICAL DETAILS		
M502A	MECHANICAL DETAILS		
C701A	MECHANICAL CONTROL DIAGRAMS		
PLUMBING (ADMIN)			
P001A	PLUMBING SYMBOLS, ABBREVIATIONS, NOTES AND SHEET INDEX		
P101A	FIRST FLOOR PLUMBING PLAN, ROOF PLAN		
P501A	PLUMBING DETAILS		
ELECTRICAL (ADMIN)			
E001A	SYMBOLS, NOTES AND ABBREVIATIONS		
ELD101A	ADMIN LIGHTING DEMOLITION PLAN – 1ST FLOOR		
EL101A	ADMIN LIGHTING PLAN – 1ST FLOOR		
EP101A	ADMIN POWER PLAN – 1ST FLOOR		
EP102A	ADMIN POWER PLAN - ROOF		
E501A	ELECTRICAL DETAILS		
E601A	PANEL SCHEDULES		
E701A	SINGLE LINE DIAGRAM		

FINAL BID DOCUMENTS

CONSULTANTS:

ARCHITECT/ENGINEERS:



251 Post Street, Suite 620
San Francisco, CA 94108-5017
Tel 415 989 6400, Fax 415 989 3056
www.HilliardArchitects.com

TITLE SHEET

Drawing Title

Approved: Project Director

Project Title
VA PALO ALTO BLDG 6
ADMINISTRATIVE
EXPANSION

Location
VAPAHCs, PALO ALTO CAMPUS
3801 MIRANDA AVE. PALO ALTO, CA 94304

Date
04.17.2014

Checked
M.H.

Drawn
J.P.

Project Number
640-13-121P

Building Number
6

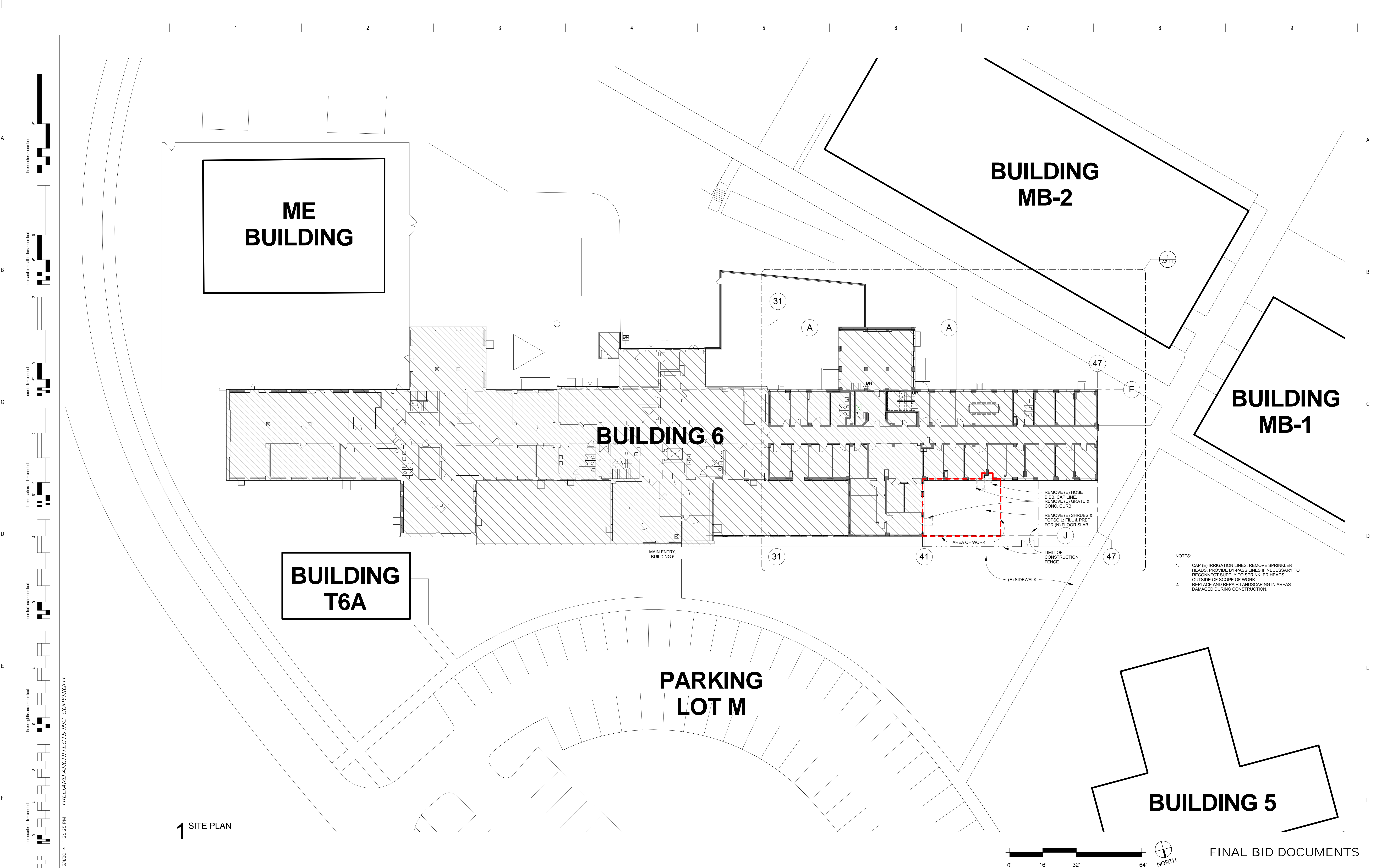
Drawing Number
.G0.01A

Dwg. of

Office of
Construction
and Facilities
Management

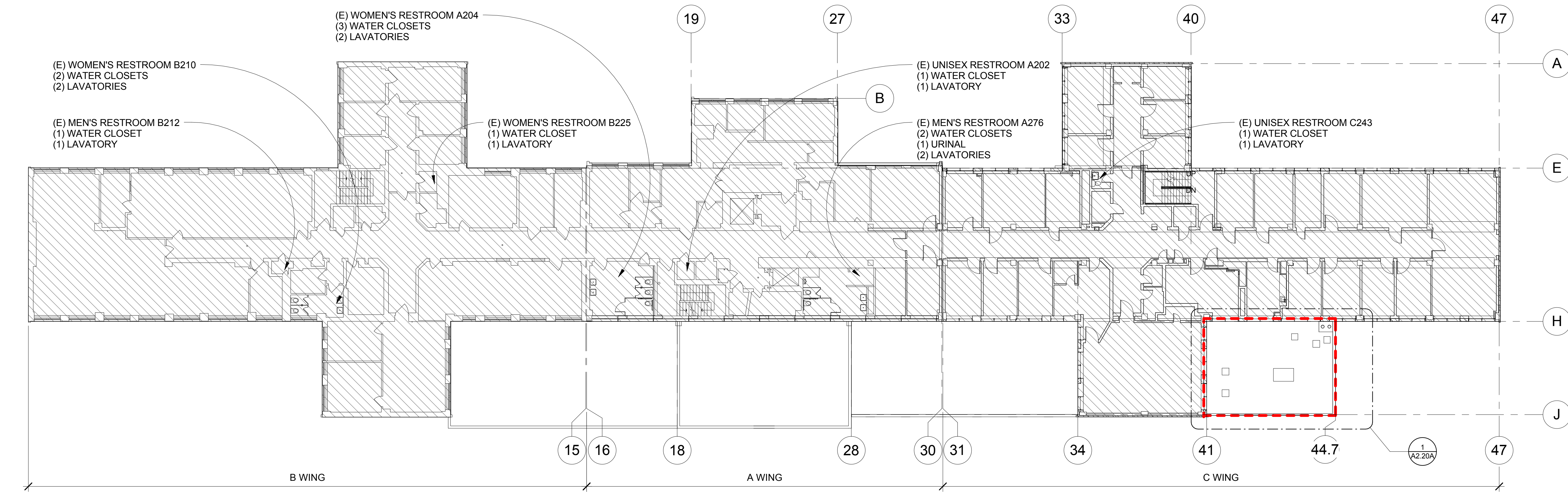


[illegible]

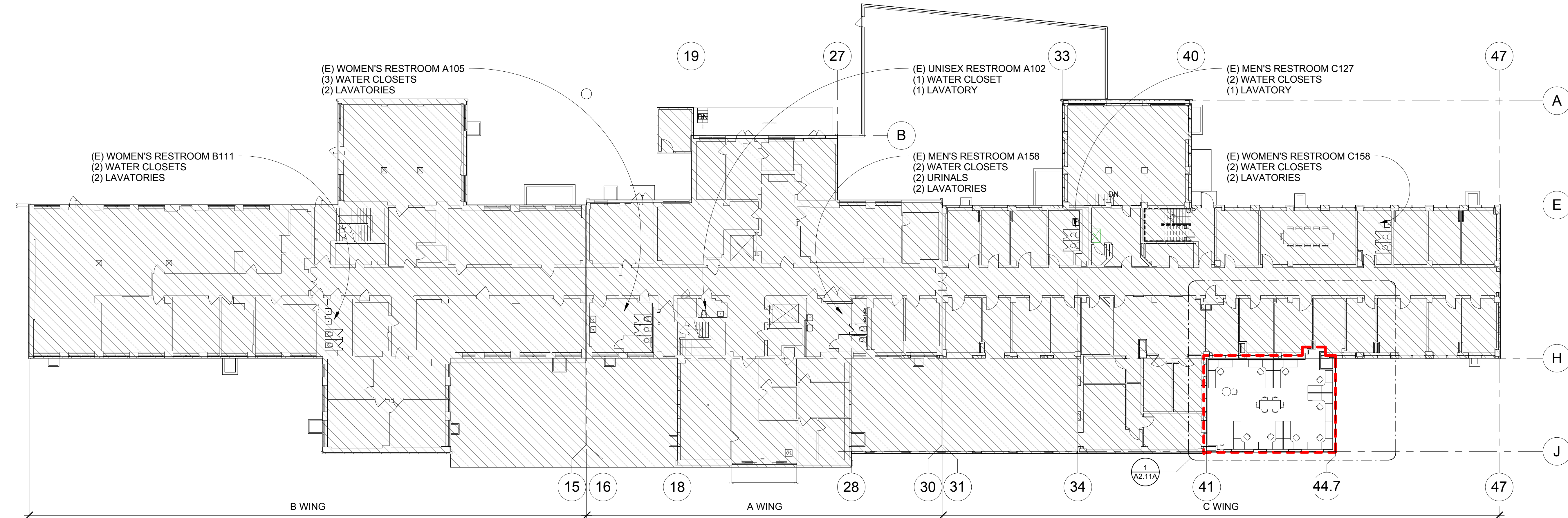


		<div>CONSULTANTS:</div>		<div>ARCHITECT/ENGINEERS:</div> <div><div></div><div>251 Post Street, Suite 620 San Francisco, CA 94108-5017 Tel 415 989 6400, Fax 415 989 3056 www.HilliardArchitects.com</div></div>	<div>Drawing Title</div> <div>SITE PLAN</div>	<div><div>Project Number</div><div>VA PALO ALTO BLDG 6</div><div>ADMINISTRATIVE</div><div>EXPANSION</div></div>	<div><div>Project Number</div><div>640-13-121P</div><div>Building Number</div><div>6</div></div>	<div>Office of Construction and Facilities Management</div> <div> <div>Department of Veterans Affairs</div></div>
					<div>Approved: Project Director</div>	<div><div>Location</div><div>VAPAHCS, PALO ALTO CAMPUS 3801 MIRANDA AVE, PALO ALTO, CA 94304</div></div>	<div><div>Drawing Number</div><div>A1.00A</div><div>Dwg. of</div></div>	
					<div>Date</div> <div>04.17.2014</div>	<div><div>Checked</div><div>M.H.</div></div>	<div><div>Drawn</div><div>M.U.</div></div>	
Revisions:	Date							

three inches = one foot
one and one half inches = one foot
one inch = one foot
three quarters inch = one foot
one half inch = one foot
three eighths inch = one foot
one quarter inch = one foot
one eighth inch = one foot



2 OVERALL BUILDING PLAN - SECOND FLOOR



1 OVERALL BUILDING PLAN - FIRST FLOOR

LEGEND

AREA OF NO WORK

BOUNDARY OF WORK

0' 16' 32' 64'

NORTH

FINAL BID DOCUMENTS

5/4/2014 11:26:27 PM HILLIARD ARCHITECTS INC. COPYRIGHT

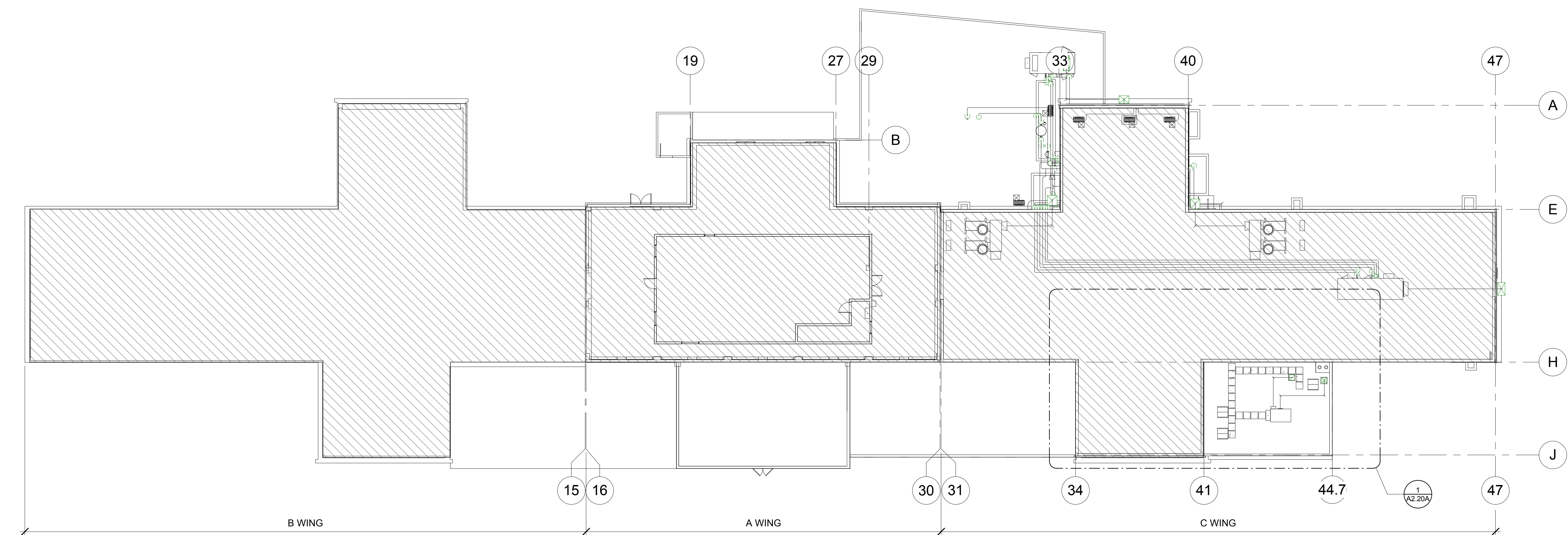
CONSULTANTS:		ARCHITECT/ENGINEERS:		Drawing Title		Project Title		Project Number	
				OVERALL BUILDING PLANS		VA PALO ALTO BLDG 6 ADMINISTRATIVE EXPANSION		640-13-121P	
		251 Post Street, Suite 620 San Francisco, CA 94108-5017 Tel 415 989 6400, Fax 415 989 3056 www.HilliardArchitects.com		Approved: Project Director		Location VAPAHCS, PALO ALTO CAMPUS 3801 MIRANDA AVE. PALO ALTO, CA 94304		Building Number 6	
						Date 04.17.2014		Drawing Number A1.01A	
						Checked M.H.		Dwg. of	
						Drawn J.P.			
Revisions:									
Date									

Office of
Construction
and Facilities
Management

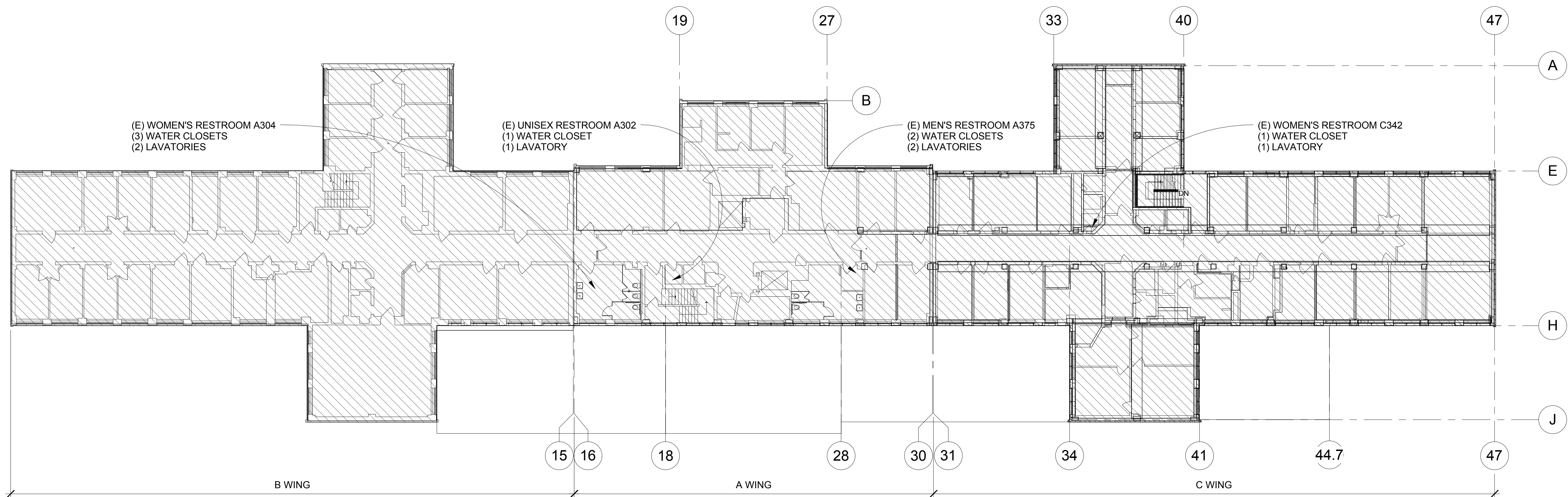
Department of
Veterans Affairs

three inches = one foot
one and one half inches = one foot
one inch = one foot
three quarters inch = one foot
one half inch = one foot
three eighths inch = one foot
one quarter inch = one foot
one eighth inch = one foot

5/4/2014 11:26:29 PM HILLIARD ARCHITECTS INC. COPYRIGHT



4 OVERALL BUILDING PLAN - ROOF

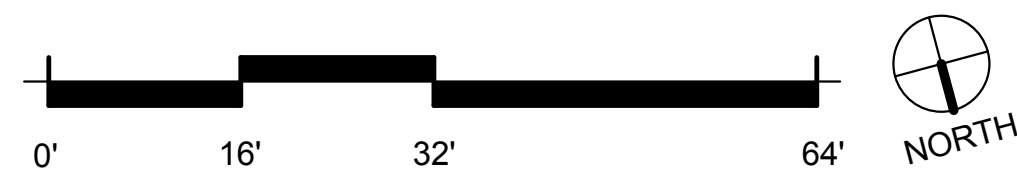


3 OVERALL BUILDING PLAN - THIRD FLOOR

LEGEND

AREA OF NO WORK

BOUNDARY OF WORK



FINAL BID DOCUMENTS

		<div>CONSULTANTS:</div>			<div>ARCHITECT/ENGINEERS:</div> <div><div></div><div>251 Post Street, Suite 620 San Francisco, CA 94108-5017 Tel 415 989 6400, Fax 415 989 3056 www.HilliardArchitects.com</div></div>	<div>Drawing Title</div> <div>OVERALL BUILDING PLANS</div> <div>Approved: Project Director</div>	<div>Project Title</div> <div>VA PALO ALTO BLDG 6 ADMINISTRATIVE EXPANSION</div> <div>Location</div> <div>VAPAHCS, PALO ALTO CAMPUS 3801 MIRANDA AVE, PALO ALTO, CA 94304</div> <div><div>Date</div><div>04.17.2014</div><div>Checked</div><div>M.H.</div><div>Drawn</div><div>Author</div></div>	<div>Project Number</div> <div>640-13-121P</div> <div><div>Building Number</div><div>6</div></div> <div><div>Drawing Number</div><div>A1.02A</div></div> <div><div>Dwg.</div><div>of</div></div>	<div>Office of Construction and Facilities Management</div> <div> Department of Veterans Affairs</div>	
Revisions:	Date									

A
three inches = one foot

B
one and one half inches = one foot

C
one inch = one foot

D
three quarters inch = one foot

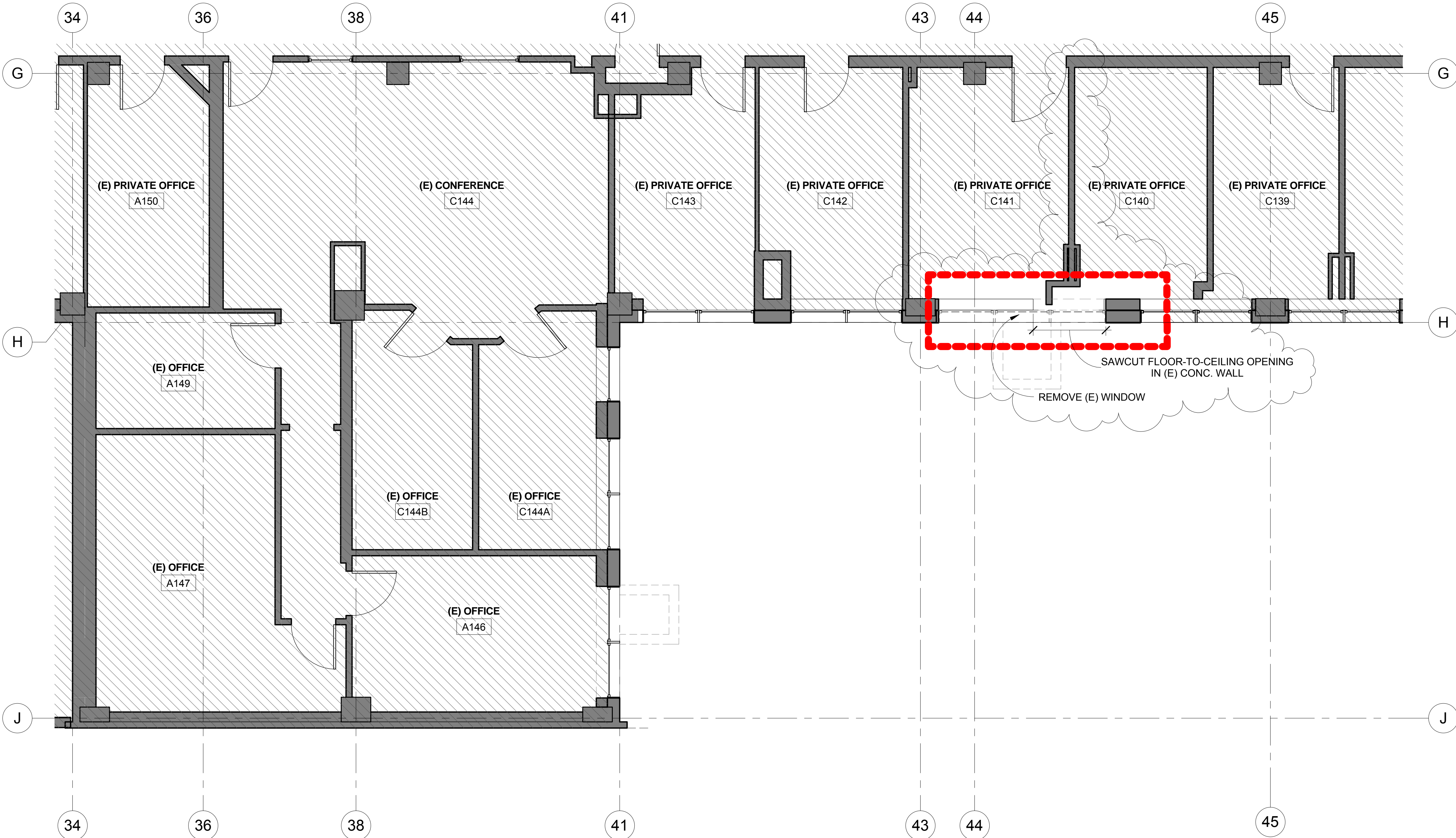
E
one half inch = one foot

F
three eighths inch = one foot

one quarter inch = one foot

one eighth inch = one foot

5/4/2014 11:26:30 PM HILLIARD ARCHITECTS INC. COPYRIGHT



1 DEMOLITION PLAN - FIRST FLOOR



LEGEND

- AREA OF NO WORK
- BOUNDARY OF WORK
- (E) FLOOR FINISH TO BE DEMOLISHED

FINAL BID DOCUMENTS

Revision 1	05.02.2014
Revisions:	Date

CONSULTANTS:

ARCHITECT/ENGINEERS:

251 Post Street, Suite 620
San Francisco, CA 94108-5017
Tel 415 989 6400, Fax 415 989 3056
www.HilliardArchitects.com

Drawing Title
FIRST FLOOR DEMOLITION PLAN

Approved: Project Director

Project Title
VA PALO ALTO BLDG 6
ADMINISTRATIVE
EXPANSION

Location
VAPAHCS, PALO ALTO CAMPUS
3801 MIRANDA AVE, PALO ALTO, CA 94304

Date
04.17.2014

Checked
M.H.

Drawn

Project Number
640-13-121P

Building Number
6

Drawing Number
A1.21A

Dwg. of

Office of
Construction
and Facilities
Management

Department of
Veterans Affairs

 AREA OF NO WORK

FIRE EXTINGUISHER CABINET

■■■■■ BOUNDARY OF WORK



FINAL BID DOCUMENTS

[illegible]



1 ROOF PLAN

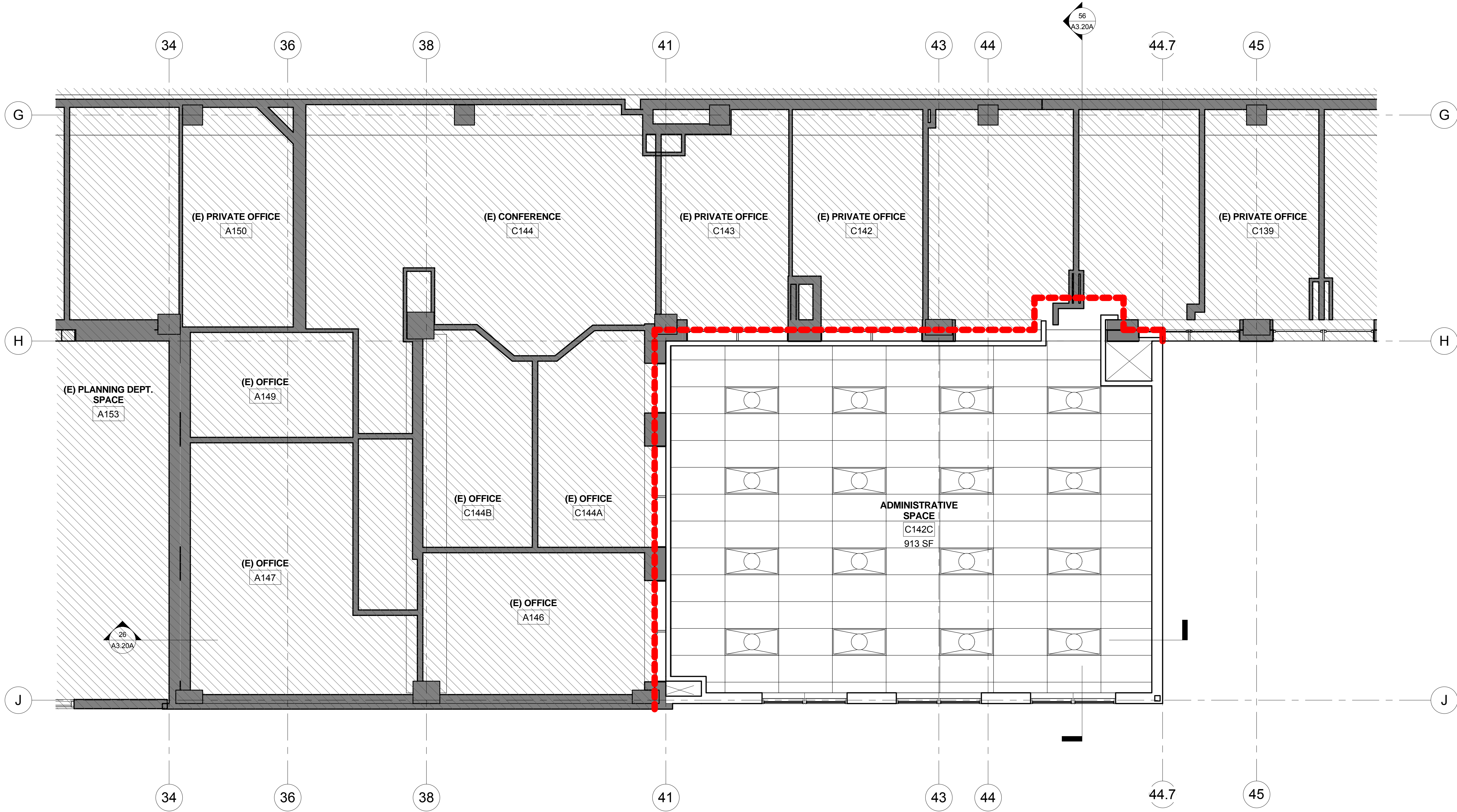


		CONSULTANTS:		ARCHITECT/ENGINEERS:	 <div> 251 Post Street, Suite 620 San Francisco, CA 94108-5017 Tel 415 989 6400, Fax 415 989 3056 www.HilliardArchitects.com </div>	<div> Drawing Title <div>ROOF PLAN</div> </div> <div> Approved: Project Director </div>	<div> Project Title <div>VA PALO ALTO BLDG 6 ADMINISTRATIVE EXPANSION</div> </div> <div> Location VAPAHCS, PALO ALTO CAMPUS 3801 MIRANDA AVE, PALO ALTO, CA 94304 </div> <div> Date 04.17.2014 </div>	<div> Project Number 640-13-121P </div> <div> Building Number 6 </div> <div> Checked M.H. </div>	<div> Drawing Number A2.20A </div> <div> Dwg. of </div>	<div> Office of Construction and Facilities Management </div> <div>  Department of Veterans Affairs </div>
Revision 1 Revisions:	05.02.2014 Date									

A
three inches = one foot
1
0
6'
one and one half inches = one foot
2
0
6'
one inch = one foot
0
6'
three quarters inch = one foot
2
0
6'
one half inch = one foot
4
0
6'
three eighths inch = one foot
0
6'
one quarter inch = one foot
8
0
6'
one eighth inch = one foot
4
0
6'
one sixteenth inch = one foot
16
0
6'

5/4/2014 11:26:34 PM
HILLIARD ARCHITECTS INC. COPYRIGHT
VA FORM 08-6231

- GENERAL NOTES:
- FOR MECH, ELECTRICAL AND PLUMBING DEMO, SEE MEP DRAWINGS.
 - ALL LIGHT FIXTURES IN A.C.T. CEILING TO BE CENTERED IN TILE U.O.N.
 - FOR NEW EXIT SIGNS, SEE ELECTRICAL DRAWINGS.

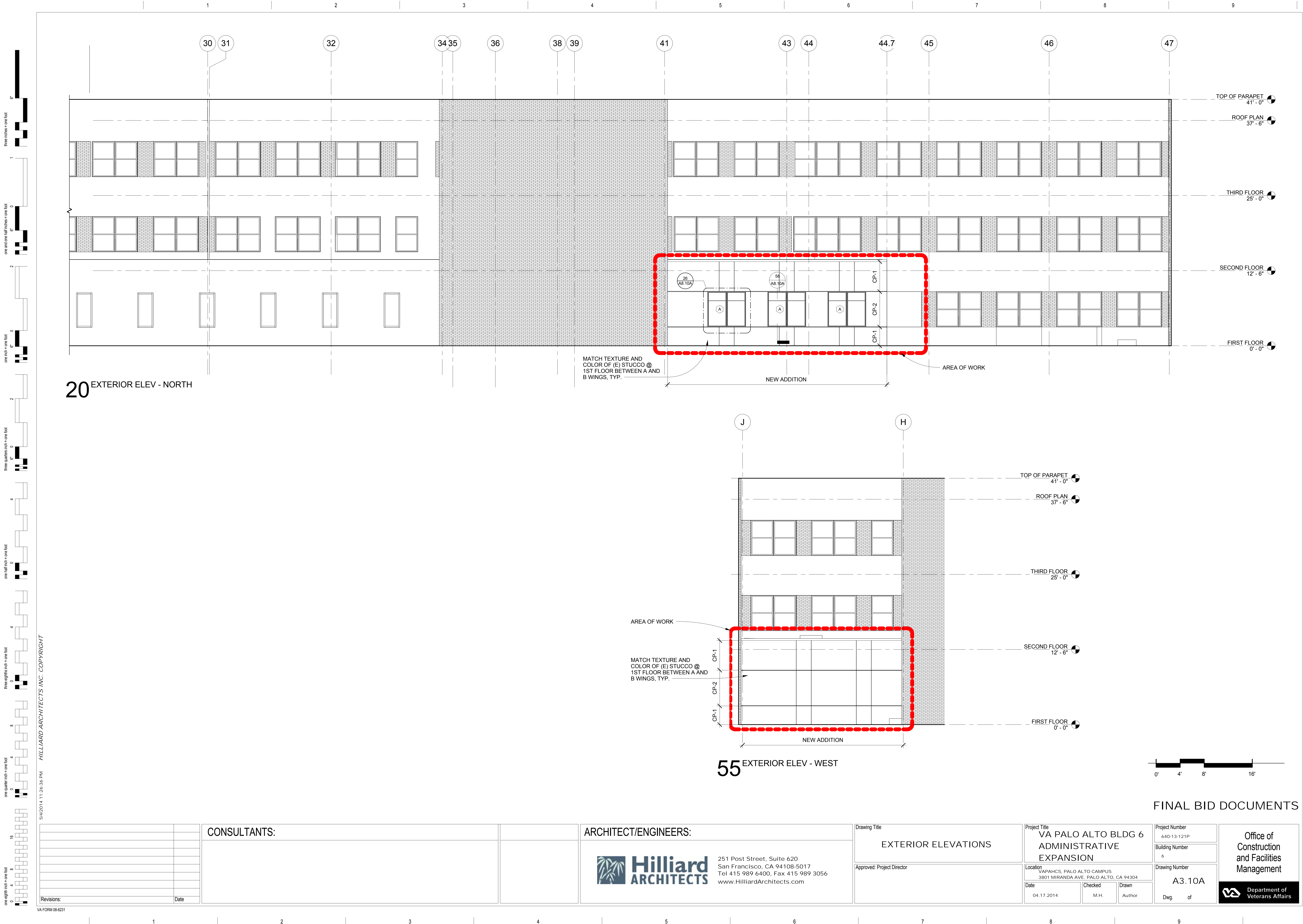


REFLECTED CEILING PLAN
2 - FIRST FLOOR

- LEGEND
- (N) T-BAR CLG. @ 9' - 0" U.O.N.
 - AREA OF NO WORK
 - LIGHTING FIXTURES, SEE LIGHT PLAN AND FIXTURE SCHEDULE
 - BOUNDARY OF WORK

FINAL BID DOCUMENTS

CONSULTANTS:		ARCHITECT/ENGINEERS:		Drawing Title FIRST FLOOR REFLECTED CEILING PLAN		Project Title VA PALO ALTO BLDG 6 ADMINISTRATIVE EXPANSION		Project Number 640-13-121P		Office of Construction and Facilities Management Department of Veterans Affairs			
				Approved: Project Director		Location VAPAHCs, PALO ALTO CAMPUS 3801 MIRANDA AVE. PALO ALTO, CA 94304		Building Number 6					
Revisions:						Date 04.17.2014		Checked M.H.				Drawing Number A2.21A	
Date								Drawn J.P.				Dwg. of	



20 EXTERIOR ELEV - NORTH

55 EXTERIOR ELEV - WEST

FINAL BID DOCUMENTS

		<div>CONSULTANTS:</div>		<div>ARCHITECT/ENGINEERS:</div> <div><div></div><div>251 Post Street, Suite 620 San Francisco, CA 94108-5017 Tel 415 989 6400, Fax 415 989 3056 www.HilliardArchitects.com</div></div>	<div>Drawing Title</div> <div>EXTERIOR ELEVATIONS</div> <div>Approved: Project Director</div>	<div><div><div>Project Title</div><div>VA PALO ALTO BLDG 6 ADMINISTRATIVE EXPANSION</div></div><div><div>Location</div><div>VAPAHCS, PALO ALTO CAMPUS 3801 MIRANDA AVE, PALO ALTO, CA 94304</div></div><div><div>Date</div><div>04.17.2014</div></div><div><div>Checked</div><div>M. H.</div></div><div><div>Drawn</div><div>Author</div></div></div>	<div><div>Project Number</div><div>640-13-121P</div></div> <div><div>Building Number</div><div>6</div></div> <div><div>Drawing Number</div><div>A3.10A</div></div> <div><div>Dwg.</div><div>of</div></div>	<div>Office of Construction and Facilities Management</div> <div> Department of Veterans Affairs</div>	
Revisions:	Date								

A

B

C

D

E

F

A

B

C

D

E

F

1 2 3 4 5 6 7 8 9

three inches = one foot
6"

one and one half inches = one foot
6"

one inch = one foot
6"

three quarters inch = one foot
6"

one half inch = one foot
6"

three eighths inch = one foot
6"

one quarter inch = one foot
6"

one eighth inch = one foot
6"

5/4/2014 11:26:37 PM
HILLIARD ARCHITECTS INC. COPYRIGHT

VA FORM 08-6231

CONSULTANTS:

ARCHITECT/ENGINEERS:



251 Post Street, Suite 620
San Francisco, CA 94108-5017
Tel 415 989 6400, Fax 415 989 3056
www.HilliardArchitects.com

Drawing Title

BUILDING SECTIONS & WALL
SECTIONS

Approved: Project Director

Project Title

VA PALO ALTO BLDG 6
ADMINISTRATIVE
EXPANSION

Location

VAPAHCs, PALO ALTO CAMPUS
3801 MIRANDA AVE. PALO ALTO, CA 94304

Date

04.17.2014

Checked

M.H.

Drawn

Author

Project Number

640-13-121P

Building Number

6

Drawing Number

A3.20A

Dwg. of

Office of
Construction
and Facilities
Management



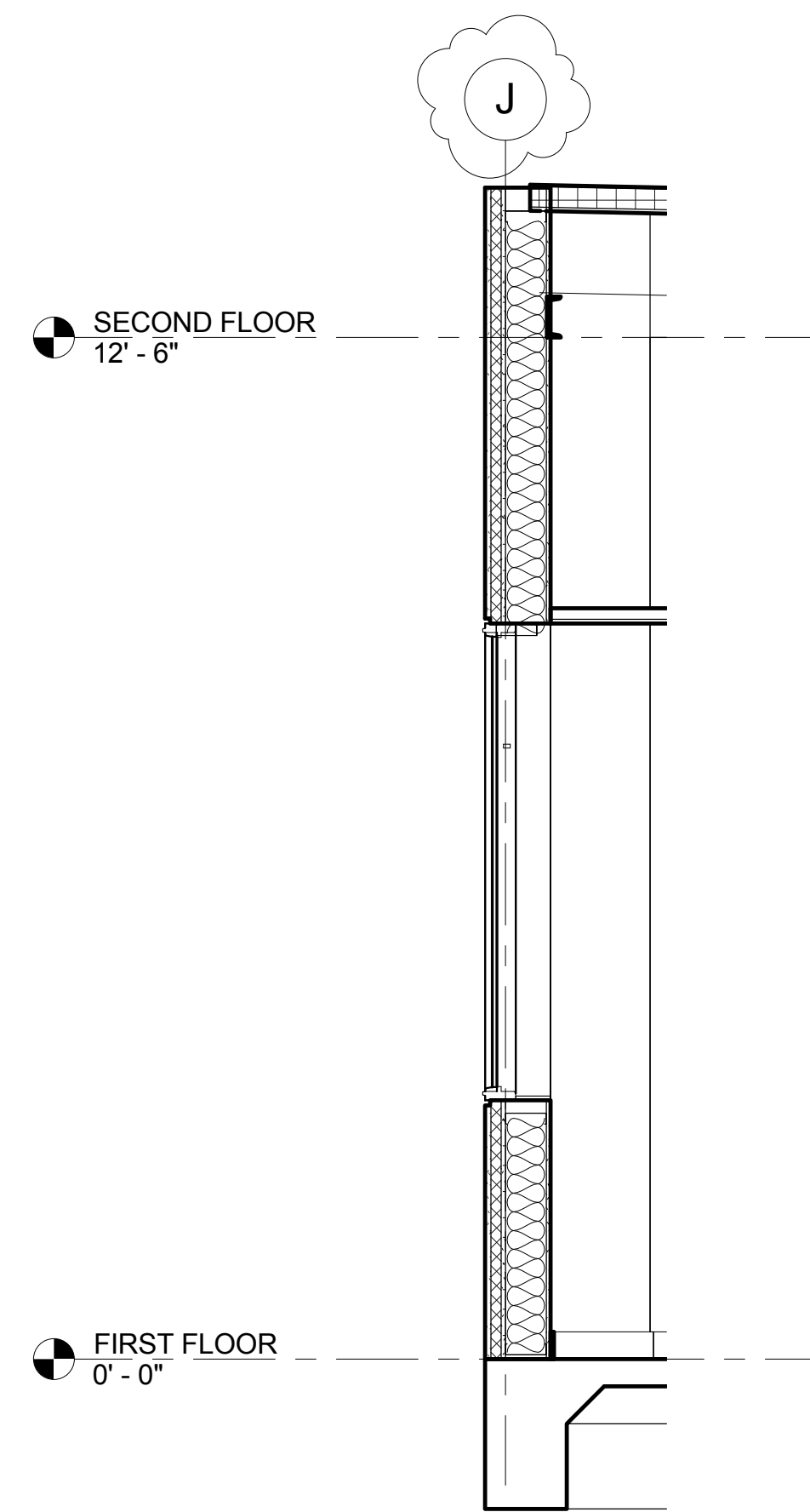
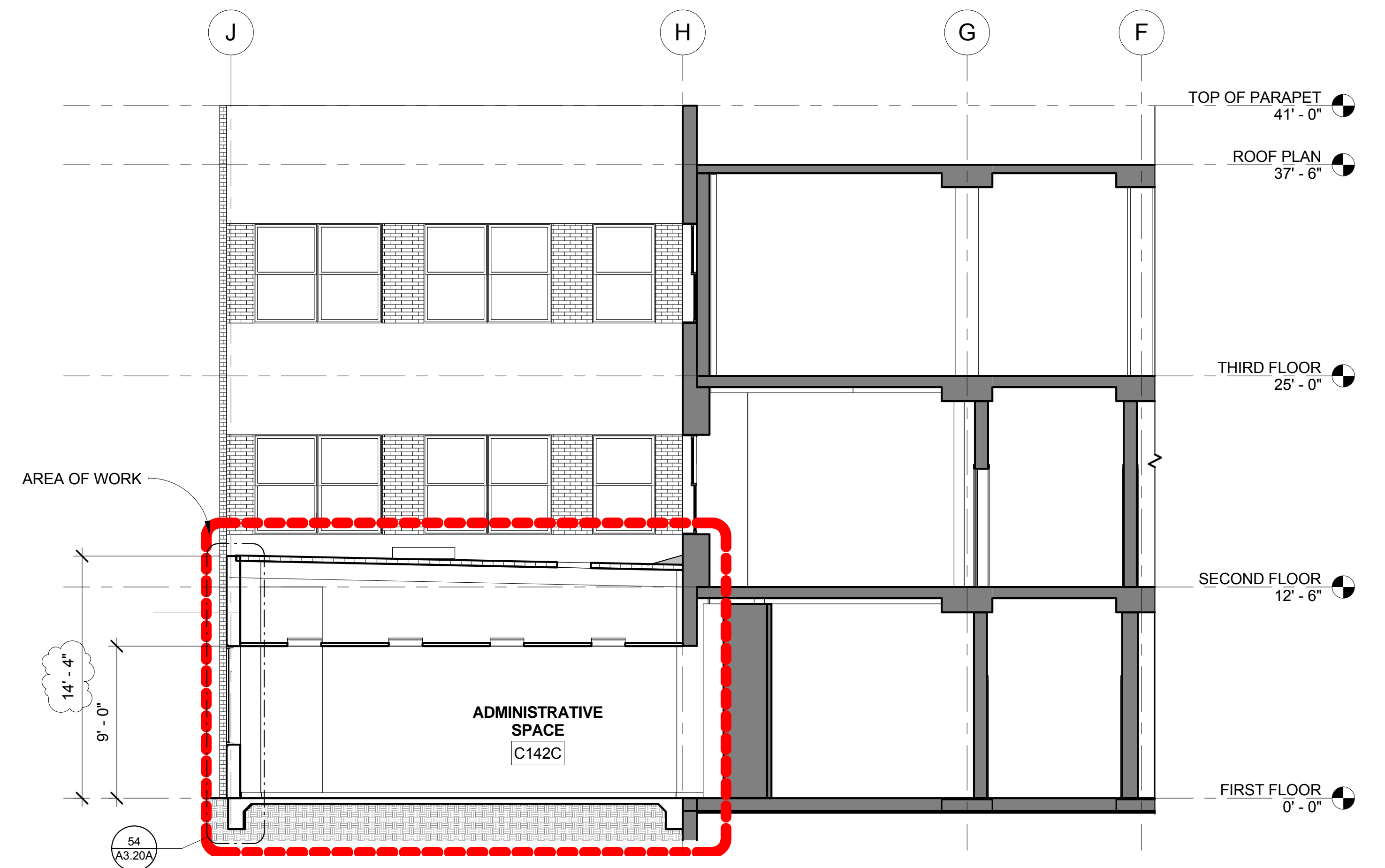
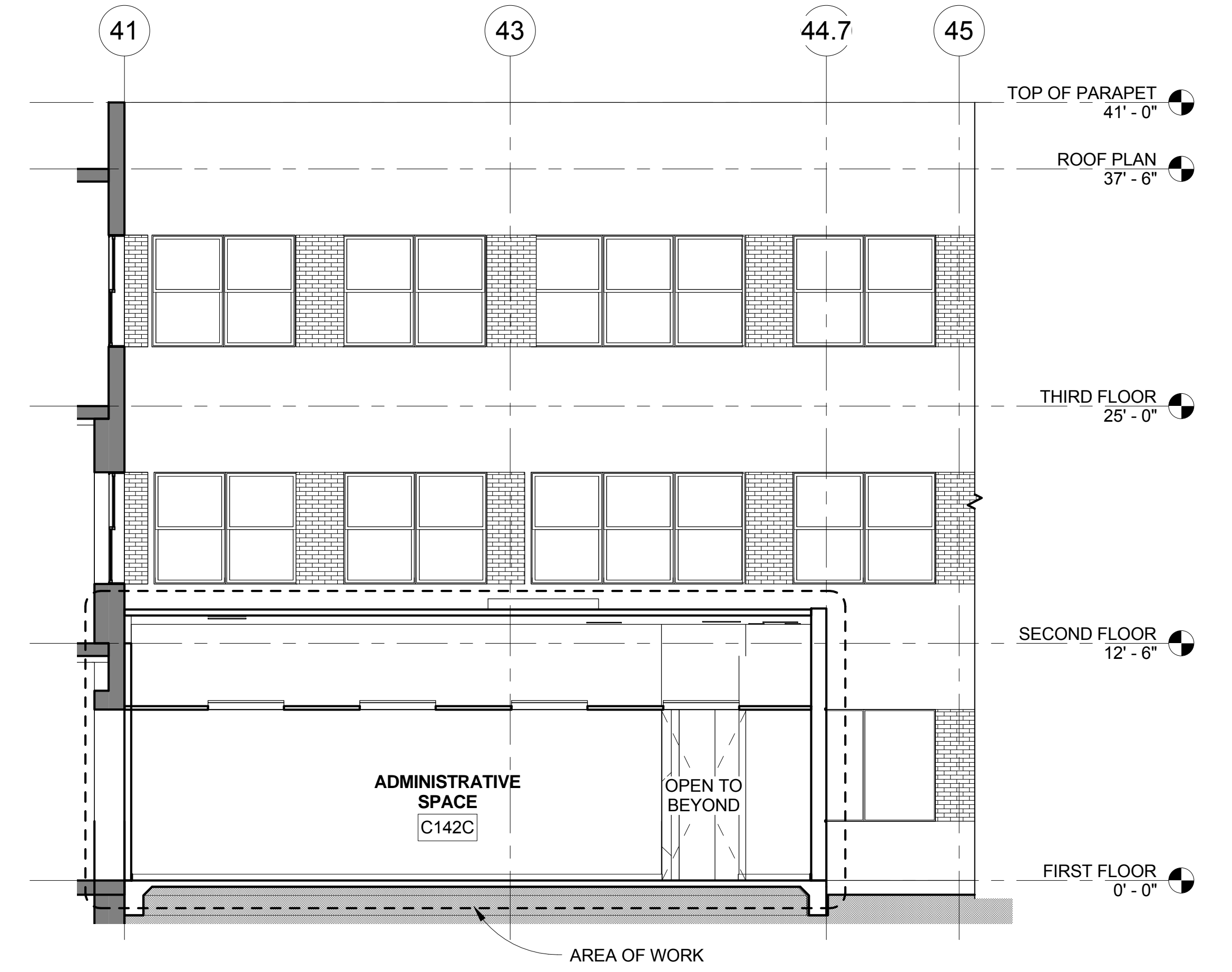
FINAL BID DOCUMENTS

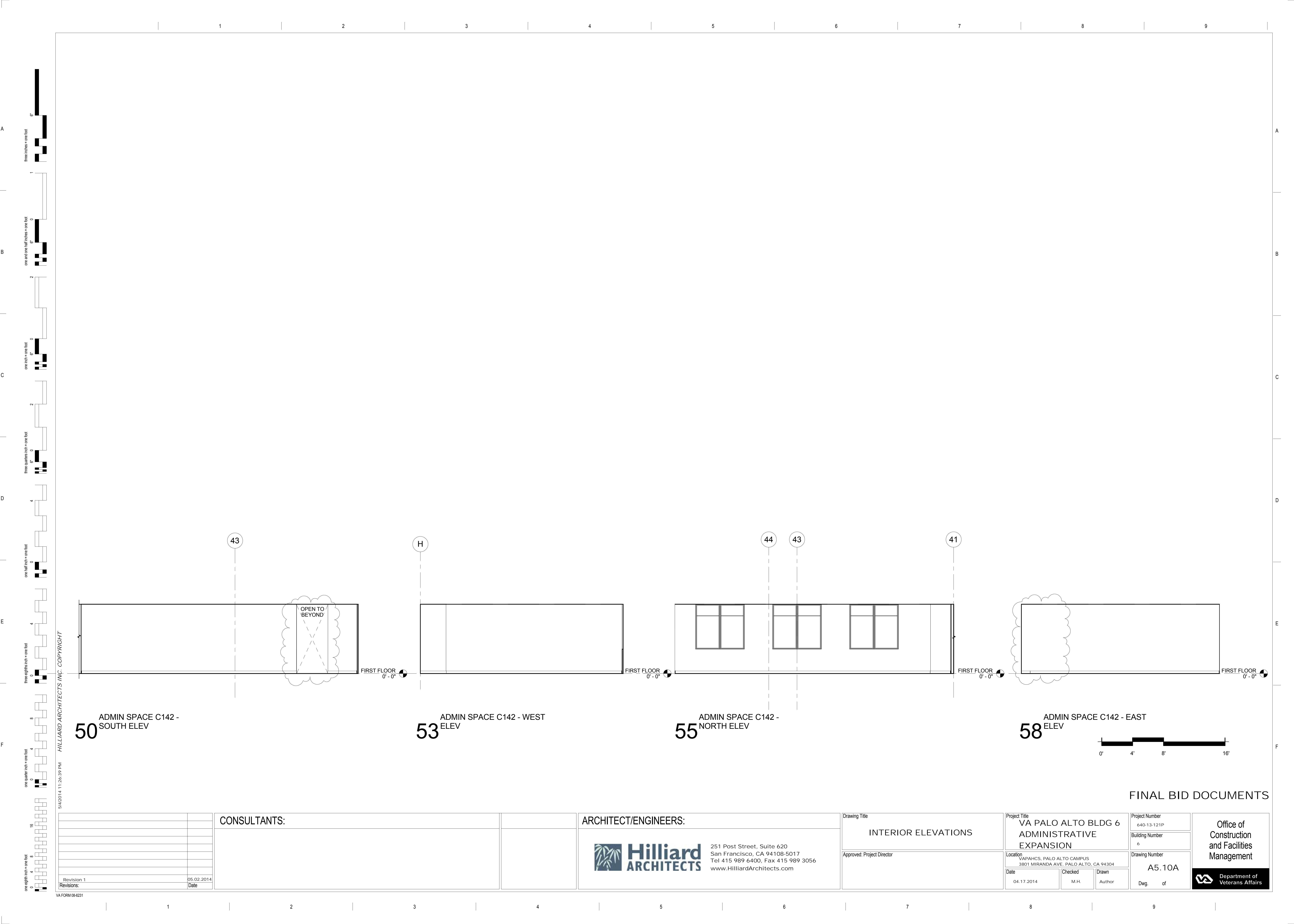
0' 4' 8' 16'

26 SECTION - NORTH

54 WALL SECTION @ ADMIN
SPACE

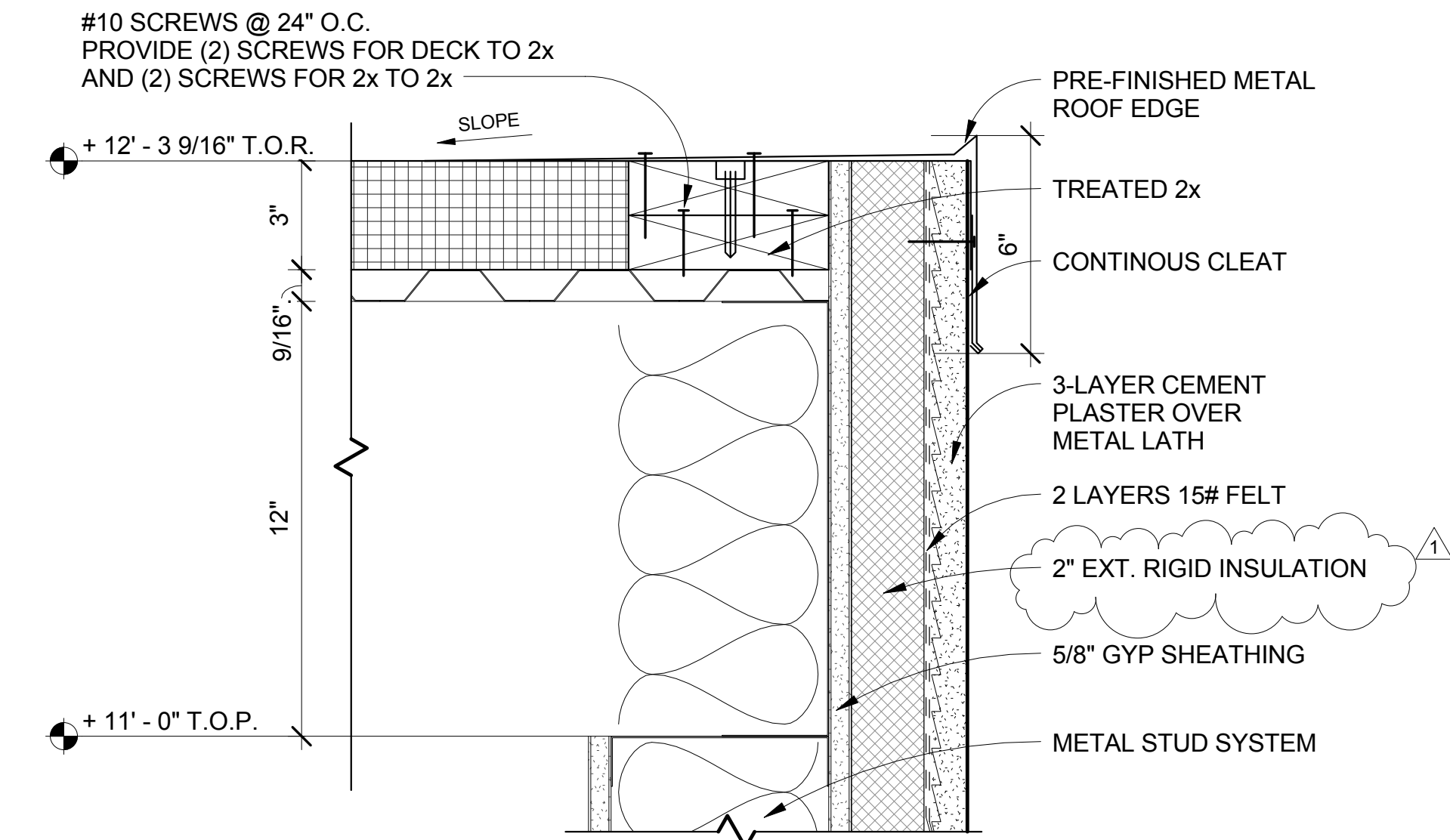
56 SECTION - WEST



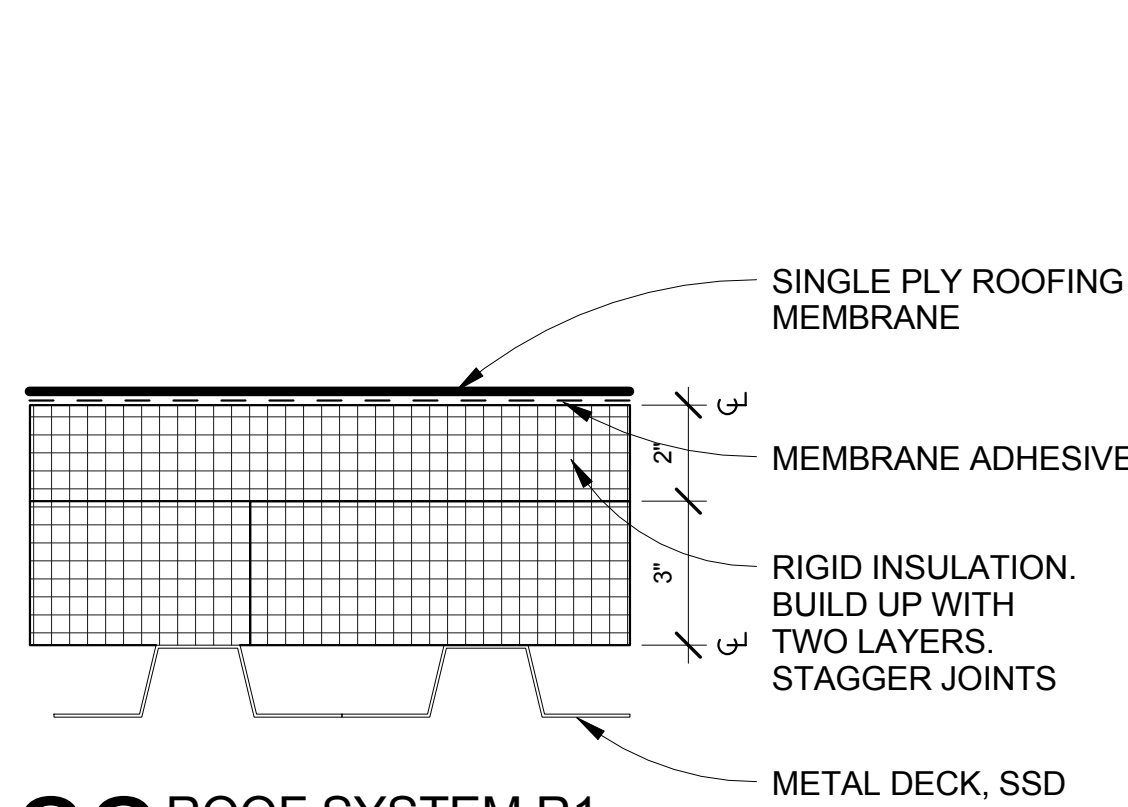


5/4/2014 11:26:39 PM HILLIARD ARCHITECTS INC. COPYRIGHT

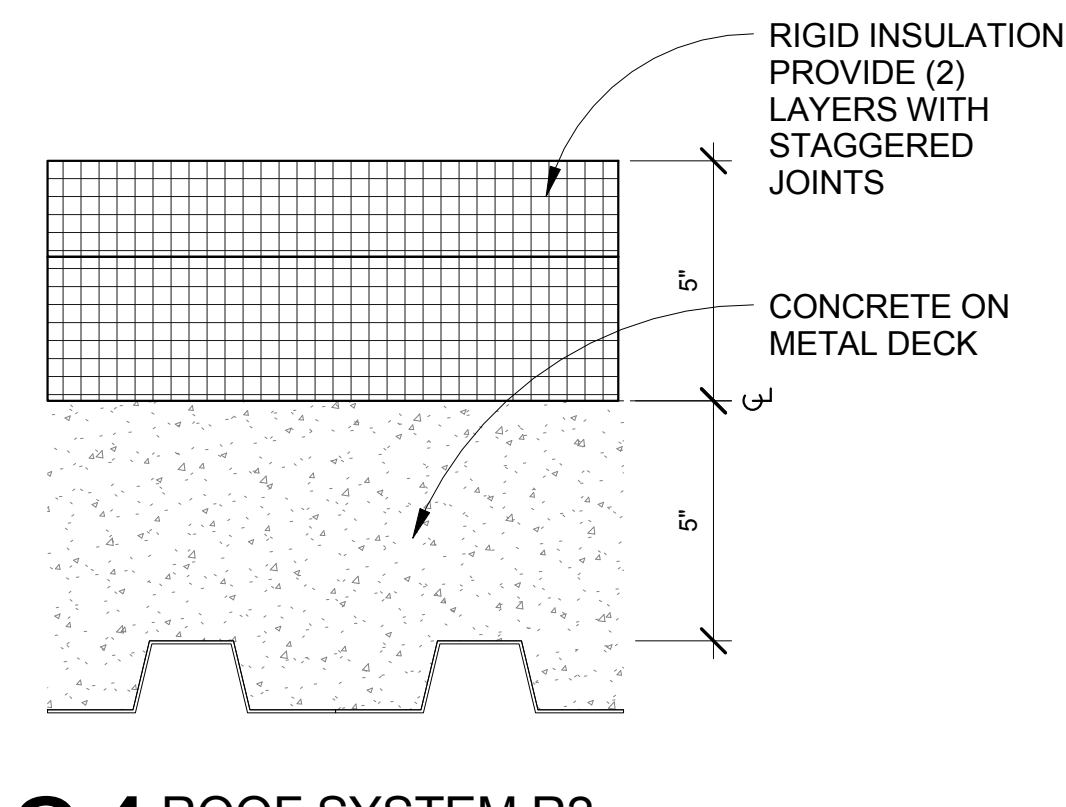
VA FORM 08-6231



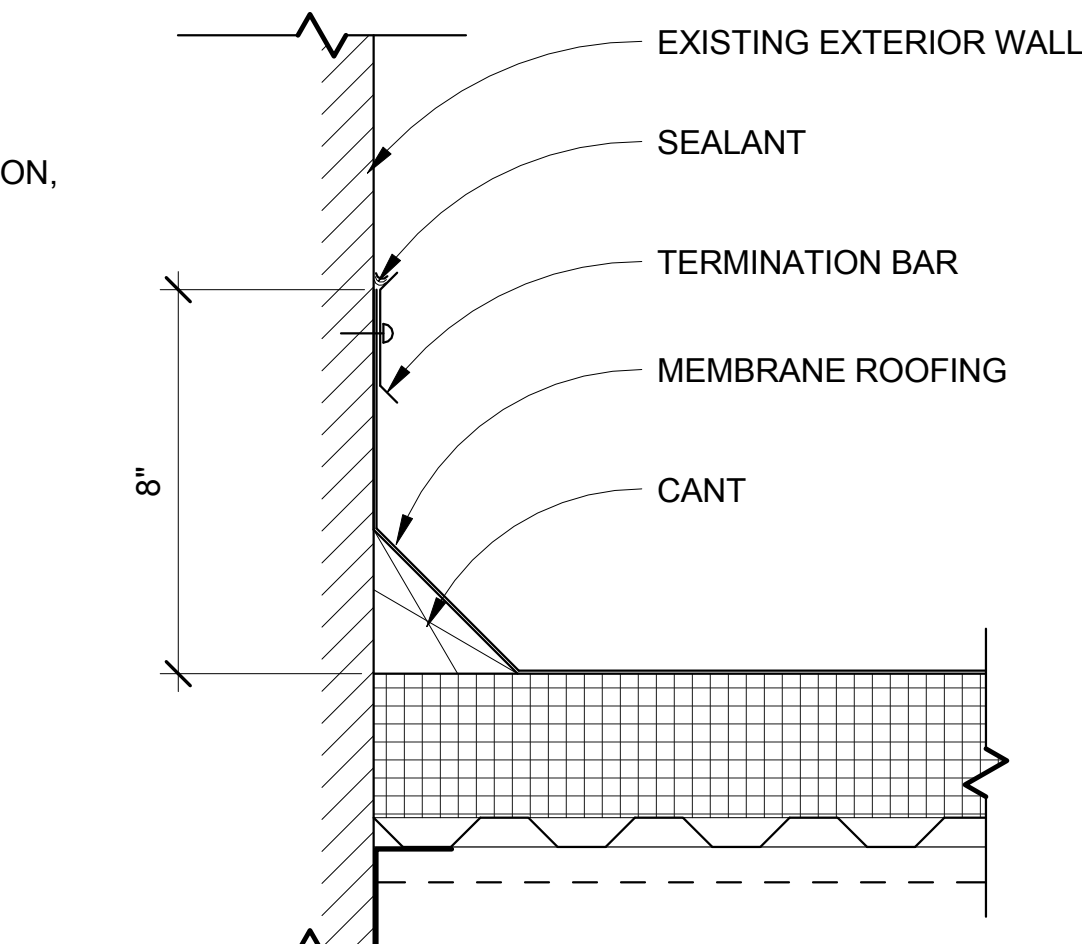
01 GRAVEL STOP @ ROOF



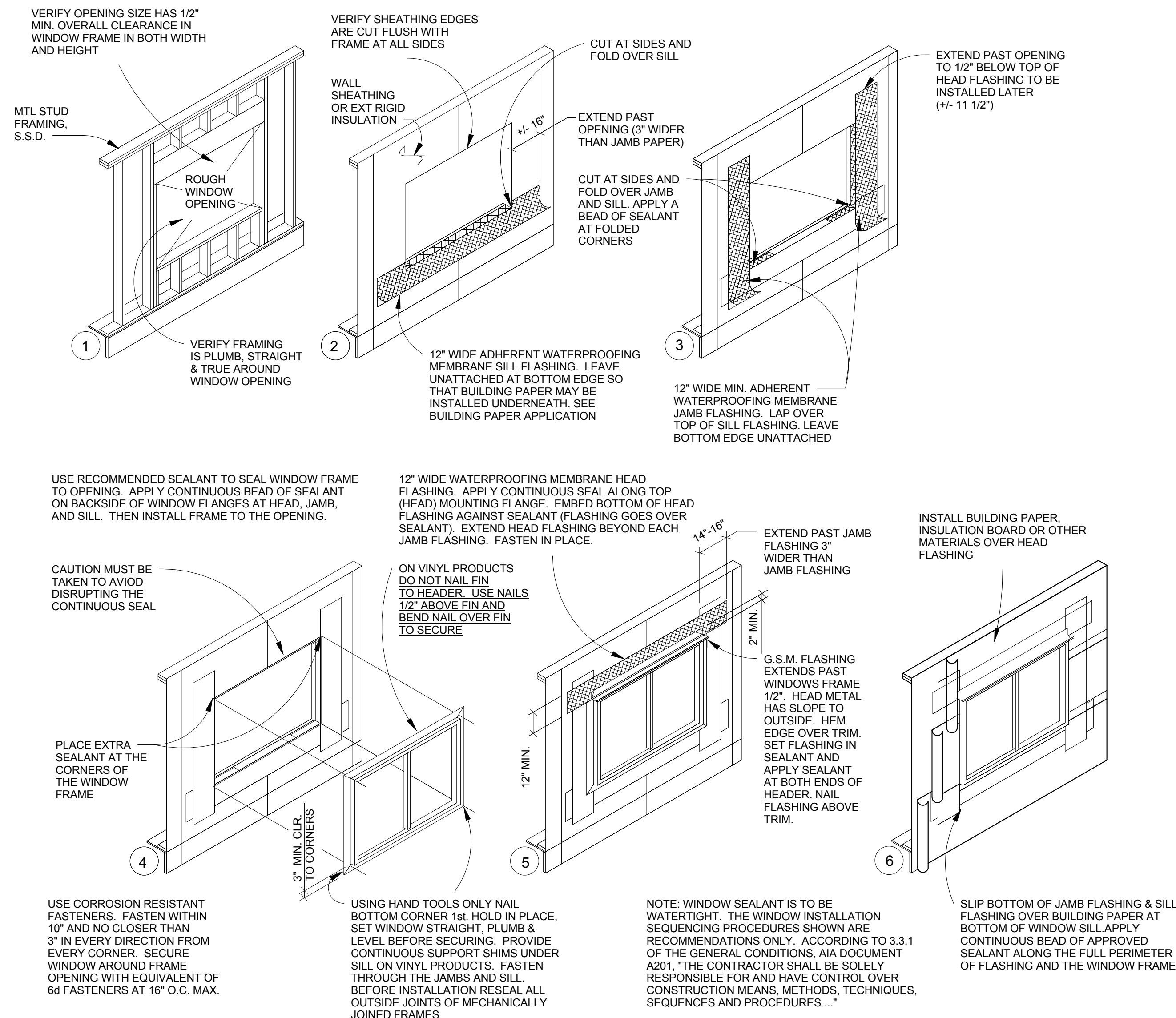
22 ROOF SYSTEM R1



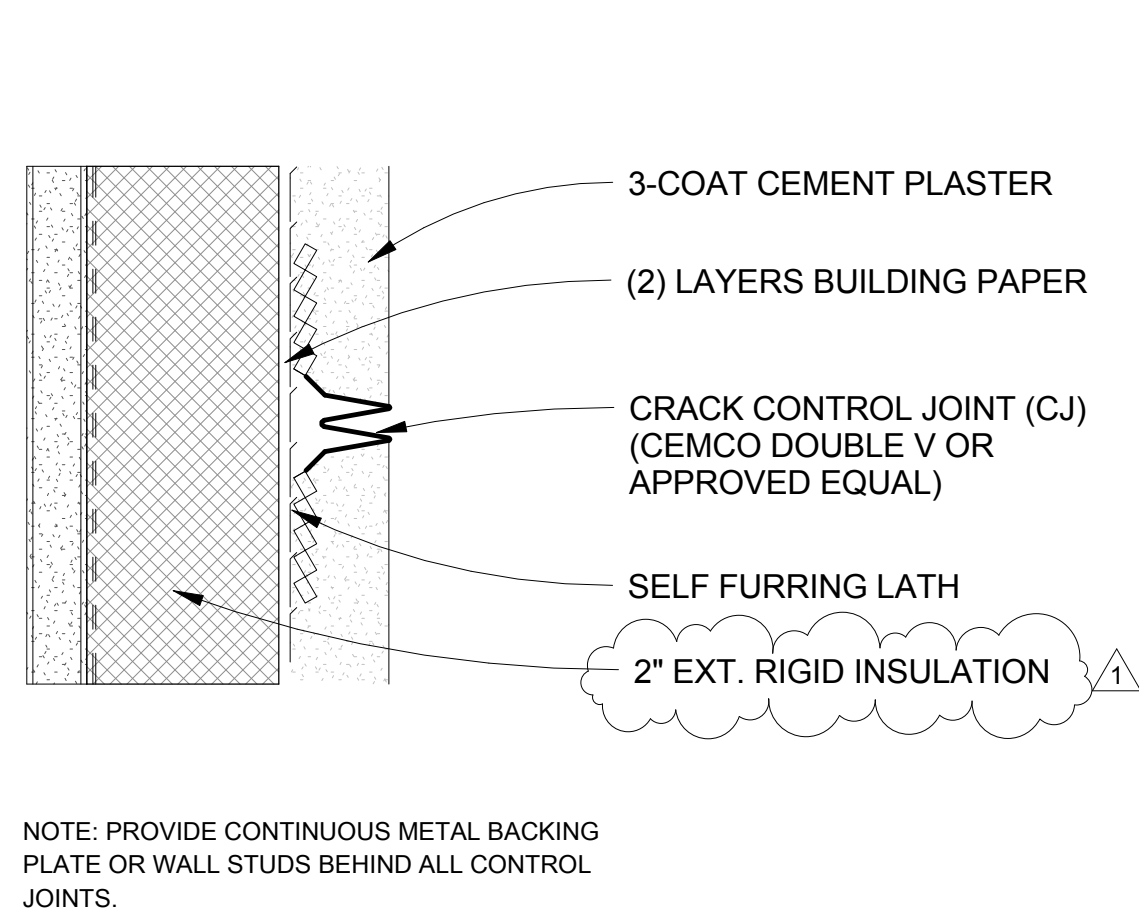
24 ROOF SYSTEM R2



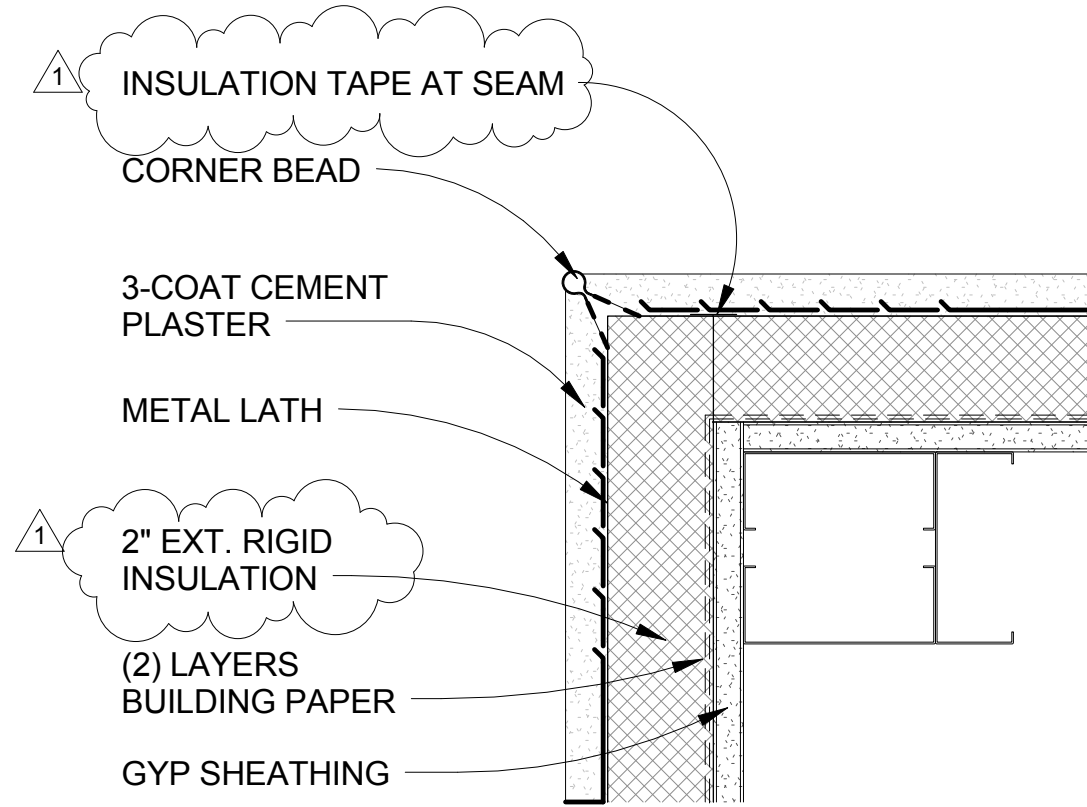
25 TERMINATION BAR AT PERIMETER OF ROOFING



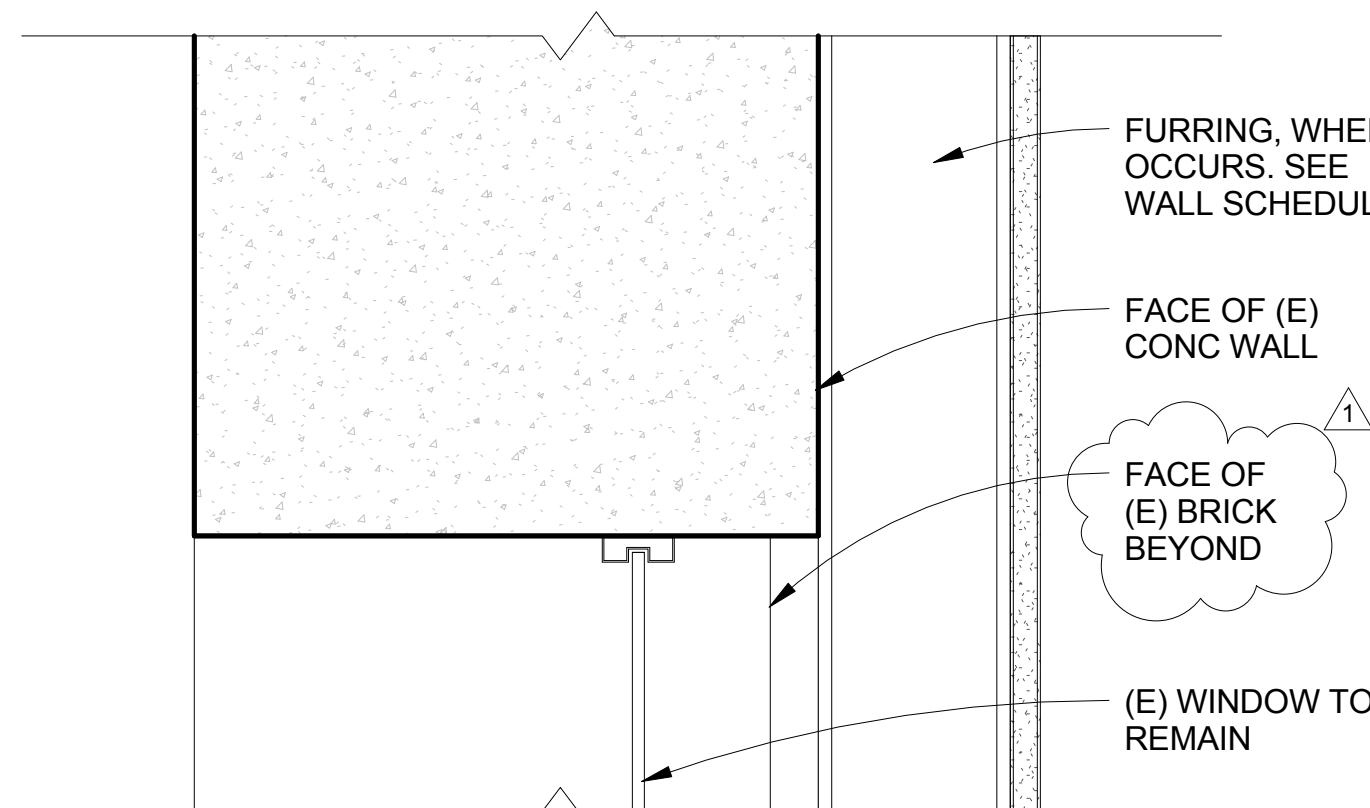
26 WINDOW FLASHING DETAILS



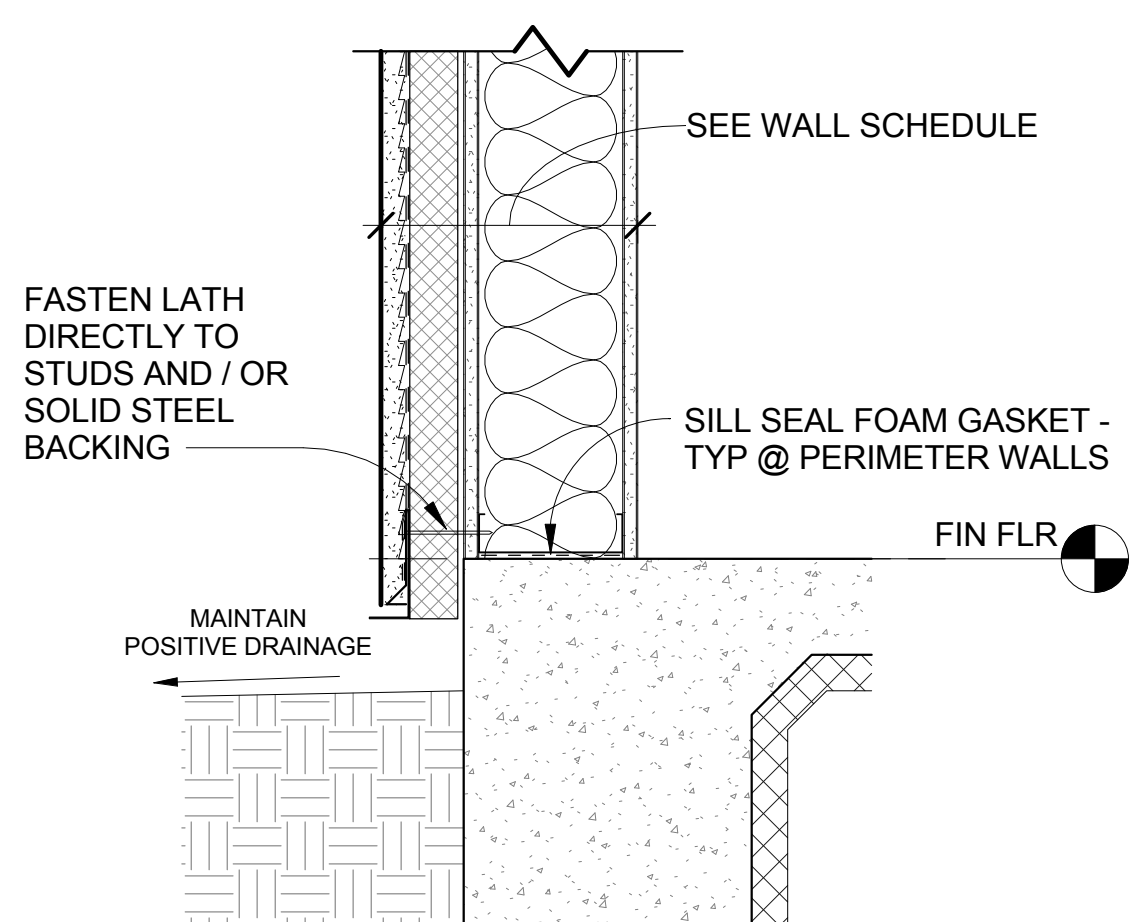
32 CONTROL JOINT



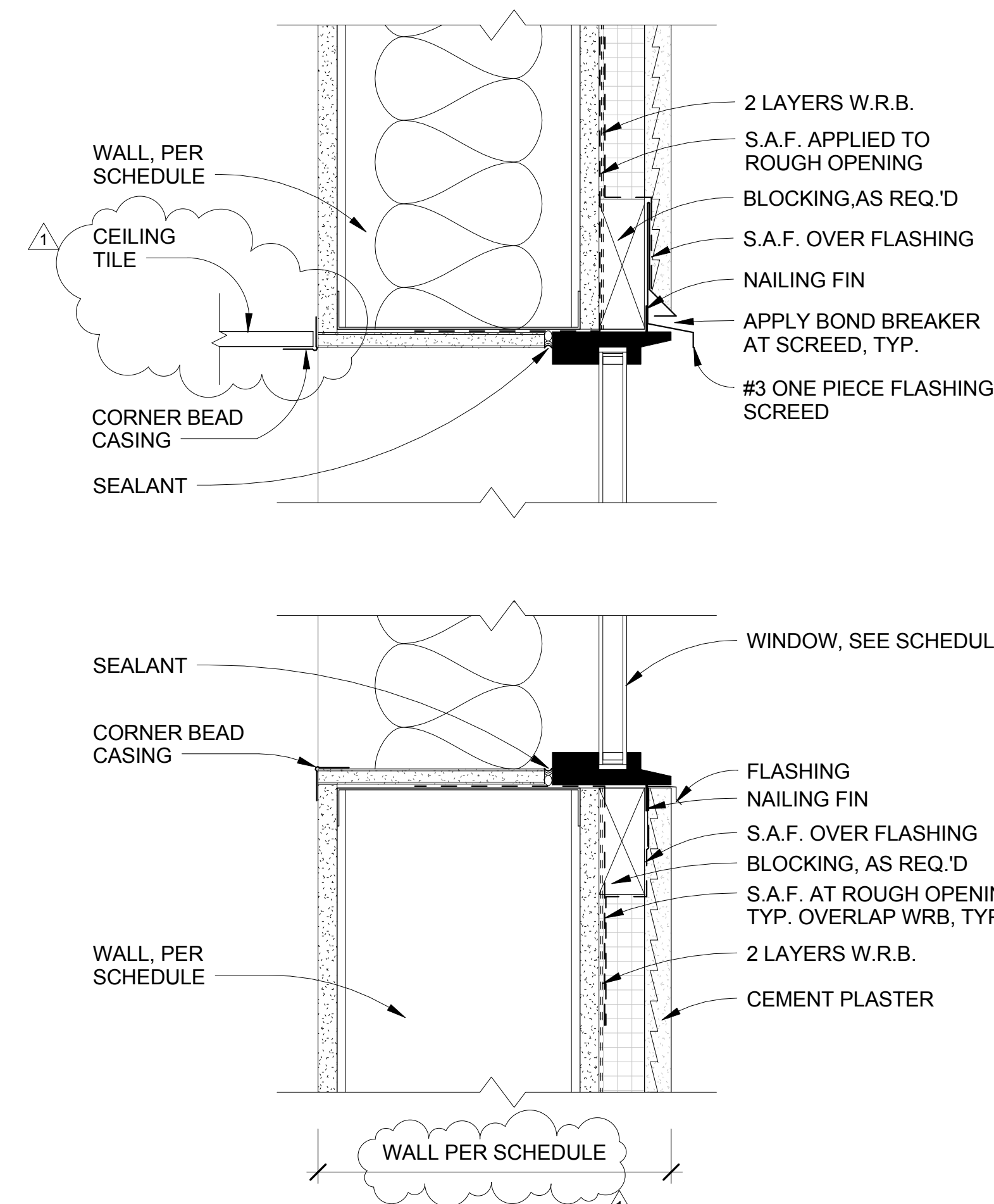
33 WALL - OUTSIDE CORNER



55 FURRING @ EXISTING WALL



52 EXT. WALL @ LANDSCAPING



58 WINDOW HEAD/SILL @ CEMENT PLASTER

HILLIARD ARCHITECTS INC. COPYRIGHT

		CONSULTANTS:				ARCHITECT/ENGINEERS:		Drawing Title		Project Title		Project Number		Office of Construction and Facilities Management Department of Veterans Affairs	
						<div></div> <div>251 Post Street, Suite 620 San Francisco, CA 94108-5017 Tel 415 989 6400, Fax 415 989 3056 www.HilliardArchitects.com</div>		EXTERIOR DETAILS		VA PALO ALTO BLDG 6 ADMINISTRATIVE EXPANSION		640-13-121P			
				Approved: Project Director				Location VAPAHCS, PALO ALTO CAMPUS 3801 MIRANDA AVE. PALO ALTO, CA 94304		Building Number 6					
Revision 1		05.02.2014						Date 04.17.2014		Checked M.H.		Drawn			
Revisions:		Date													
												Dwg. of			

three inches = one foot

one and one half inches = one foot

one inch = one foot

three quarters inch = one foot

one half inch = one foot

three eighths inch = one foot

one quarter inch = one foot

one eighth inch = one foot

5/4/2014 11:26:42 PM

HILLIARD ARCHITECTS INC. COPYRIGHT

SIGNAGE MESSAGE SCHEDULE					
SIGN NUMBER	VA SIGN TYPE	DESCRIPTION	SIGN TEXT	LAYOUT/SYMBOL	INSTALLATION NOTES
FIRST FLOOR					
142-2	IN-01.31	Perpendicular (Flag) Mount Fire Equipment Identification Sign	[Symbol] Fire Equipment	Message on both sides	Center above fire equipment cabinet. 84" to bottom of sign. Mechanically fasten to wall with expandable anchors as needed for wall type.

31

SIGNAGE MESSAGE SCHEDULE

FINISH LEGEND					
TYPE	MARK	FINISH ITEM	MANUFACTURER	COLOR	NOTES
FLOORS	CPT-1A	CARPET	PER VA	PER VA	
	RB-2A	6" TOPSET BASE	BURKE	PER VA	
CEILINGS	ACT-1A	ACOUSTICAL CEILING TILE	ARMSTRONG OPTIMA, 15/16" HD GRID, 2x4 CEILING TILES	WHITE	
PAINT	PT-1A	PAINT	KELLY MOORE	WHITE - PRISTINE LINEN (TYP)	
	PT-2A	PAINT	KELLY MOORE	KM354-1 HACIENDA CLAY (ACCENT)	

41

FINISH LEGEND

ROOM FINISH SCHEDULE									
RM. NO.	NAME	FLOOR		WALLS				CEILING	NOTES
		FINISH	BASE	NORTH	EAST	SOUTH	WEST	MATERIAL	
C142C	ADMINISTRATIVE SPACE	CPT-1A	RB-2A	PT-1A	PT-2A	PT-1A	PT-2A	ACT-1A	

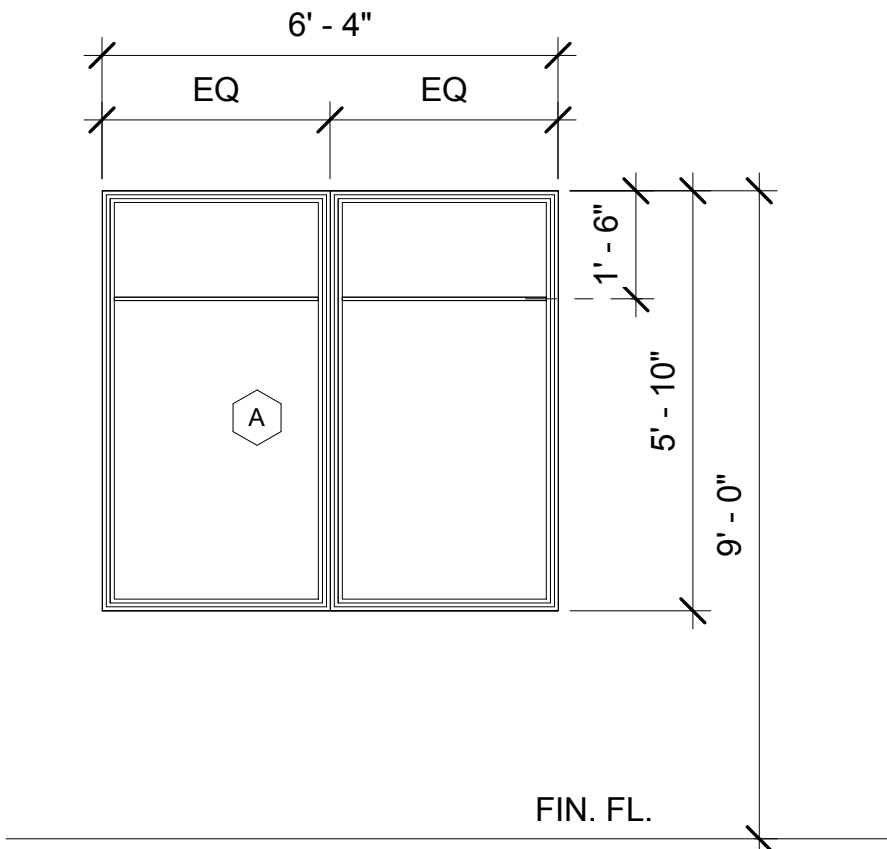
51

FINISH SCHEDULE

WINDOW SCHEDULE					
MARK	TYPE	WIDTH	HEIGHT	HEAD HEIGHT	COMMENTS
A	FIXED	6' - 4"	5' - 10"	9' - 0"	VINYL, DOUBLE-GLAZED

56

WINDOW SCHEDULE



57

WINDOW TYPE A

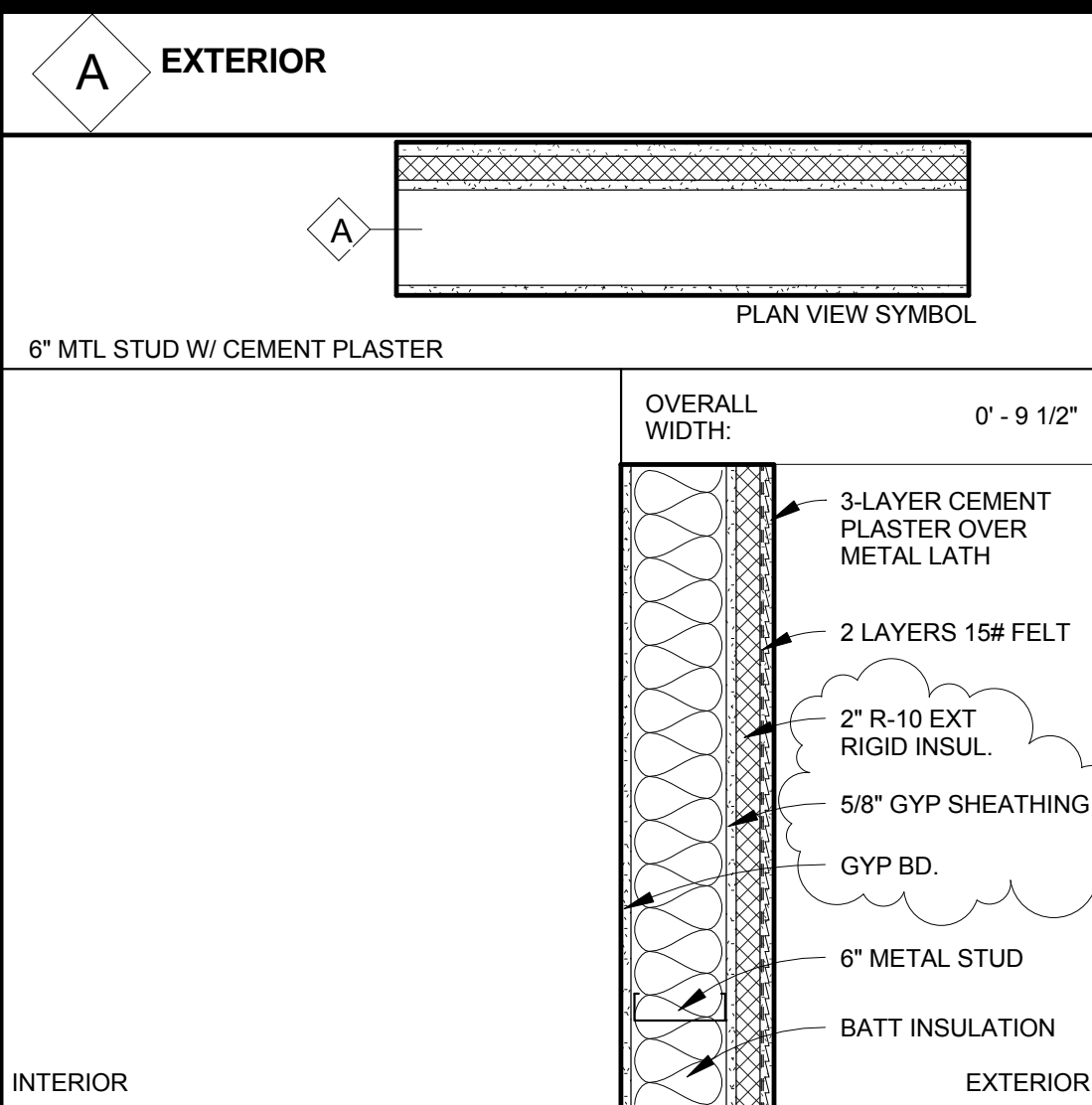
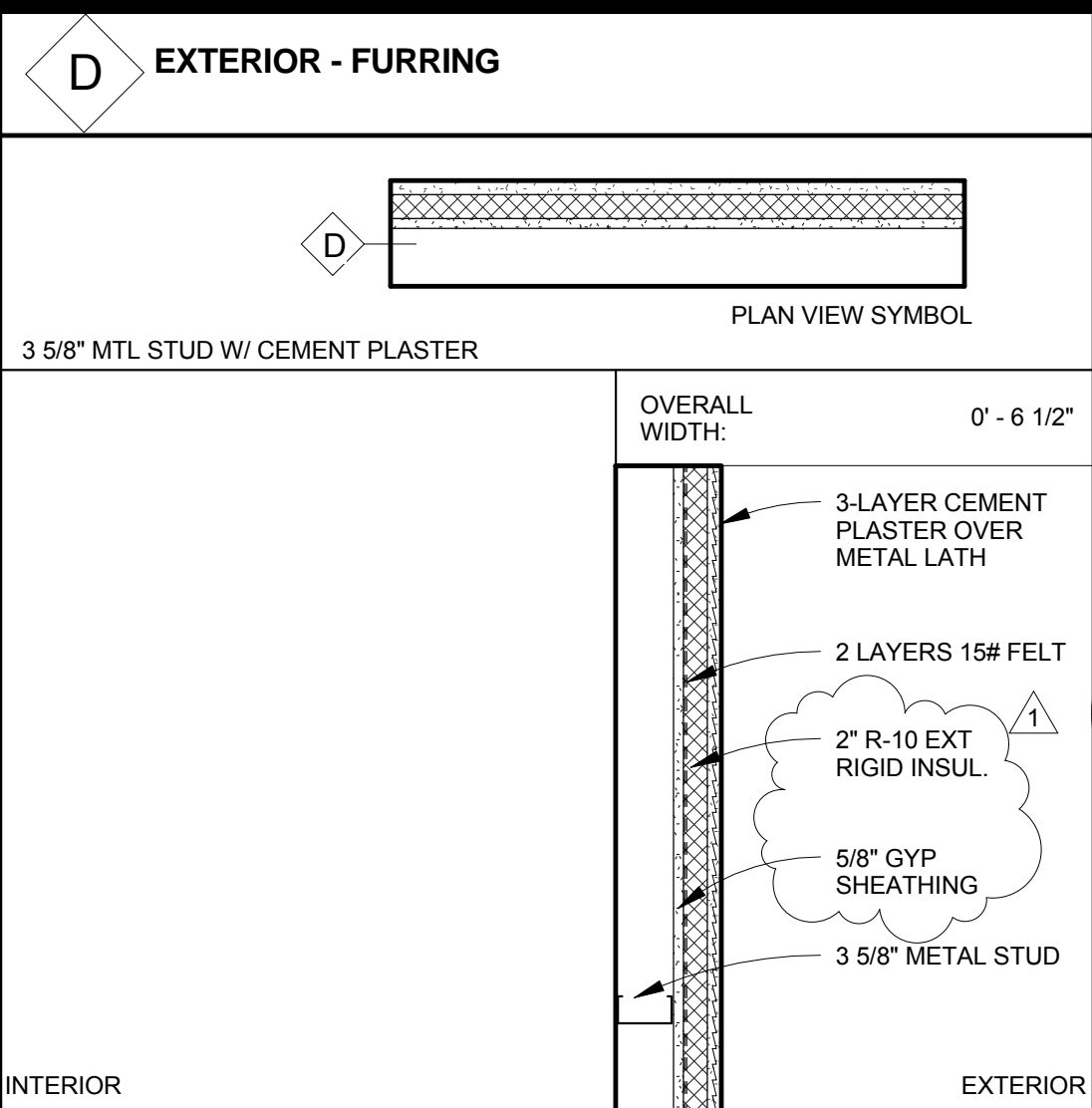
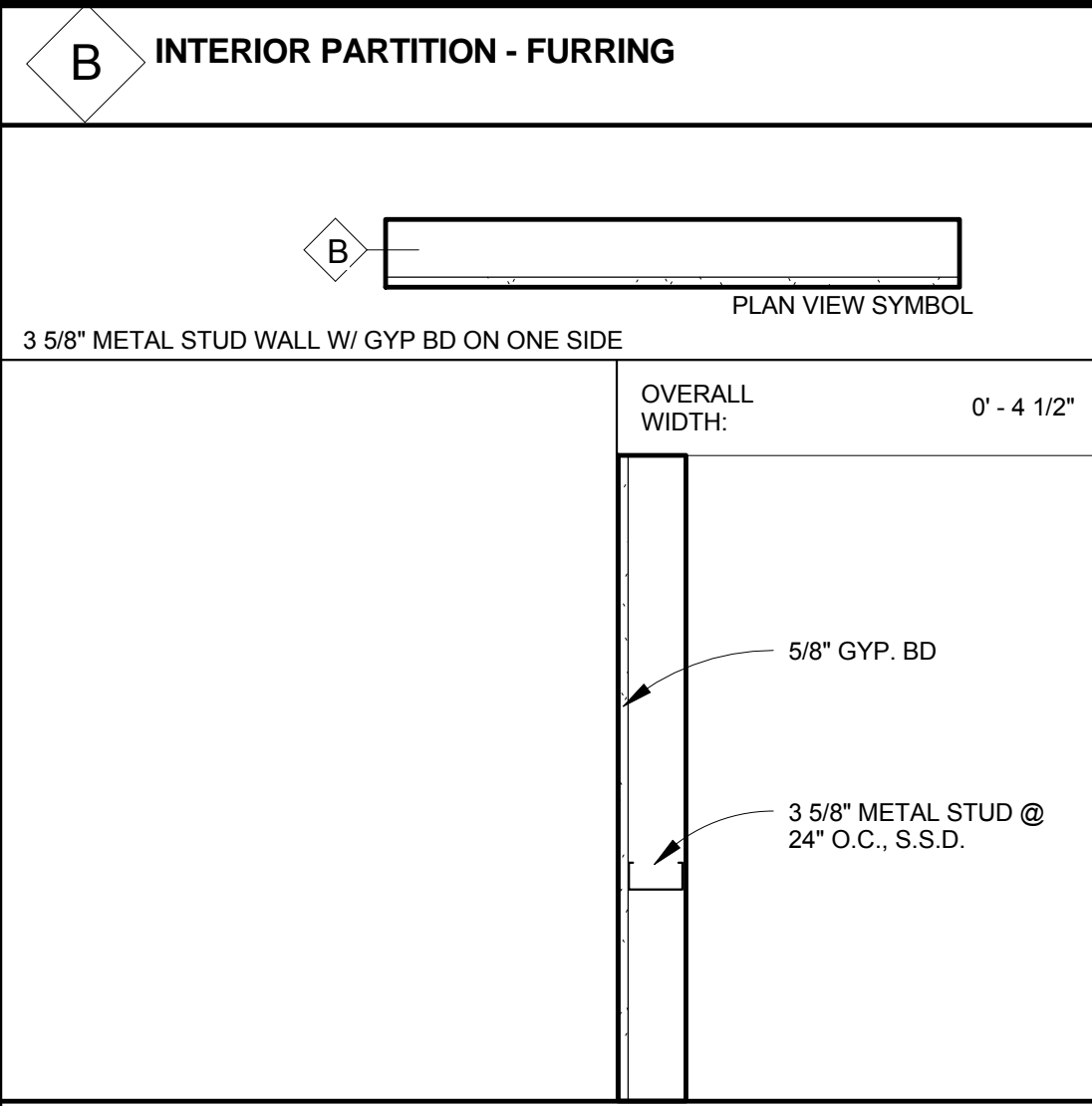
<div>Revision 105.02.2014</div> <div>Revisions:Date</div>	CONSULTANTS:	ARCHITECT/ENGINEERS: <div><div></div><div>251 Post Street, Suite 620 San Francisco, CA 94108-5017 Tel 415 989 6400, Fax 415 989 3056 www.HilliardArchitects.com</div></div>	<div>Drawing Title</div> <div>WINDOW, FINISH, SIGNAGE SCHEDULES</div> <div>Approved: Project Director</div>	<div>Project Title</div> <div>VA PALO ALTO BLDG 6 ADMINISTRATIVE EXPANSION</div> <div>Location</div> <div>VAPAHCs, PALO ALTO CAMPUS 3901 MIRANDA AVE. PALO ALTO, CA 94304</div> <div>Date</div> <div>04.17.2014</div> <div>Checked</div> <div>M.H.</div> <div>Drawn</div> <div>J.P.</div>	<div>Project Number</div> <div>640-13-121P</div> <div>Building Number</div> <div>6</div> <div>Drawing Number</div> <div>A9.10A</div> <div>Dwg. of</div>	<div>Office of Construction and Facilities Management</div> <div>Department of Veterans Affairs</div>
---	--------------	--	---	---	---	--

NON-RATED

ONE HOUR

INTERIOR WALLS

EXTERIOR WALLS



ARCHITECT/ENGINEERS:



251 Post Street, Suite 620
San Francisco, CA 94108-5017
Tel 415 989 6400, Fax 415 989 3056
www.HilliardArchitects.com

Drawing Title

WALL SCHEDULE & DETAILS

Approved: Project Director

Project Title

VA PALO ALTO BLDG 6
ADMINISTRATIVE
EXPANSION

Location

VAPAHCs, PALO ALTO CAMPUS
3801 MIRANDA AVE, PALO ALTO, CA 94304

Date

04.17.2014

Checked

M.H.

Drawn

Project Number

640-13-121P

Building Number

6

Drawing Number

A9.30A

Dwg. of

Office of
Construction
and Facilities
Management



Department of
Veterans Affairs

FINAL BID DOCUMENTS

CONSULTANTS:

5/4/2014 11:26:42 PM HILLIARD ARCHITECTS INC. COPYRIGHT

VA FORM 08-6231

