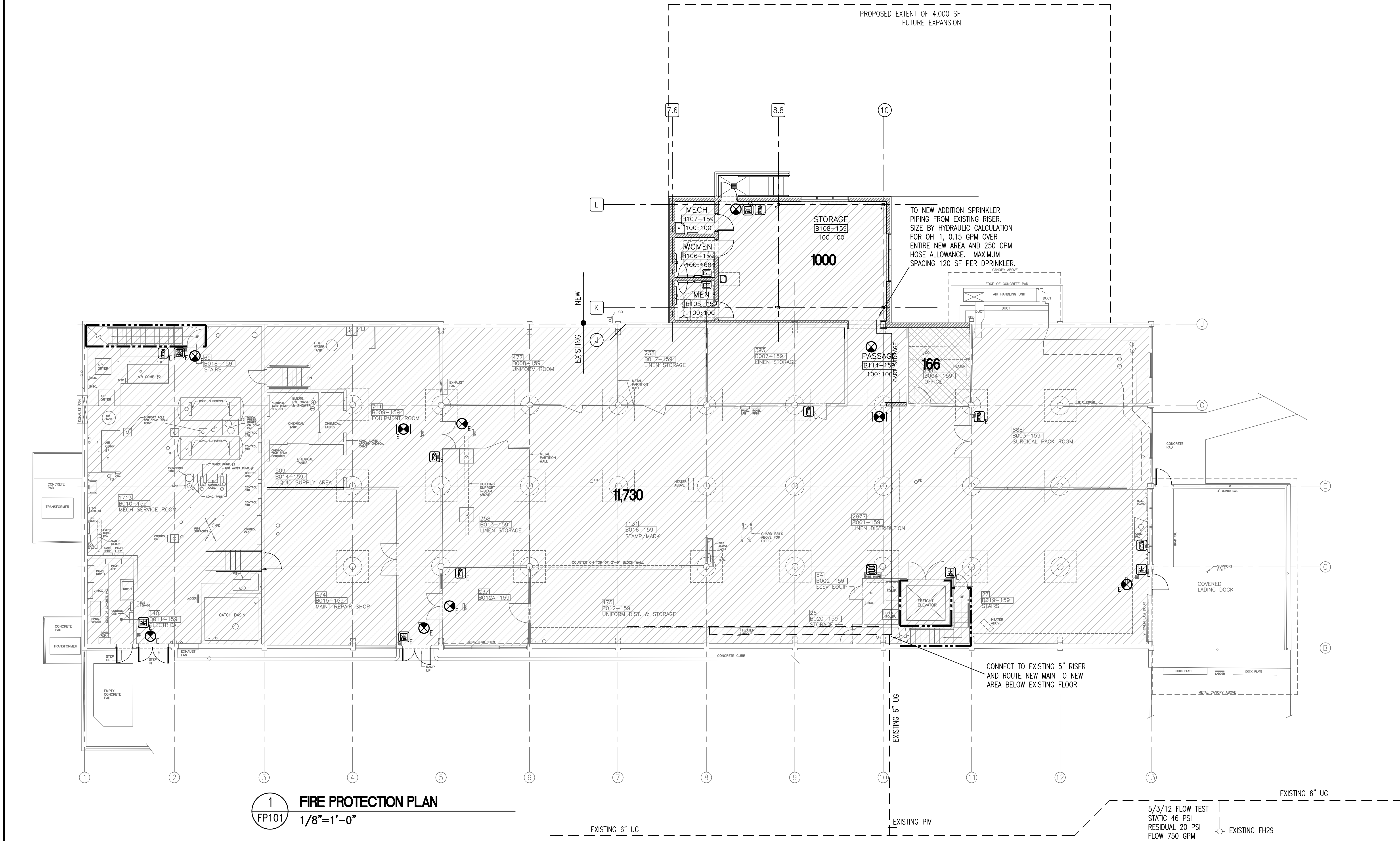
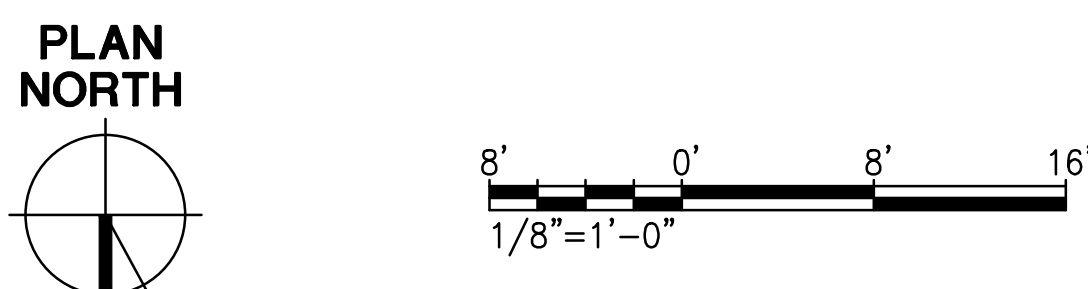


three inches = one foot
one and one half inches = one foot
one inch = one foot
three quarters inch = one foot
one half inch = one foot
three eighths inch = one foot
one quarter inch = one foot
one eighth inch = one foot
one eighth inch = one foot



- GENERAL FIRE PROTECTION NOTES:
1. ALL WORK SHALL BE IN ACCORDANCE WITH NFPA 13, 2010.
 2. EXISTING SYSTEM IS DESIGNED USING ORDINARY HAZARD PIPE SCHEDULE SIZING.
 3. DESIGN SYSTEM EXPANSION FOR NEW ADDITION BY HYDRAULIC DESIGN FOR ORDINARY HAZARD GROUP 1 TO PROVIDE 0.15 GPM PER SF OVER ENTIRE NEW AREA WITH 250 GPM HOSE ALLOWANCE.
 4. SUPPLY NEW AREA FROM EXISTING 5" SYSTEM RISER. ROUTE SUPPLY TO NEW AREA FROM EXISTING RISER BELOW FLOOR.
 5. ALL PIPING SHALL BE BLACK STEEL. PIPING 1.5" AND LESS SHALL BE SCHEDULE 40; PIPING 2.0" AND LARGER SHALL BE SCHEDULE 10.
 6. BASE CALCULATIONS ON FLOW TESTED LISTED ON PLAN. DUE TO LIMITED SUPPLY, PIPE SIZES SHALL BE INCREASED AS REQUIRED TO KEEP NEW AREA DEMAND BELOW EXISTING SUPPLY CURVE.
 7. PIPING SHOWN IS DIAGRAMMATIC ONLY. THE CONTRACTOR IS RESPONSIBLE FOR ACTUAL PIPE ROUTING, COORDINATION WITH OTHER TRADES, QUANTITY OF SPRINKLERS AND ALL DEVICES REQUIRED FOR A COMPLETE AND OPERATIONAL SYSTEM PER NFPA 13.



1
FIRE PROTECTION PLAN
FP101
1/8"=1'-0"

CONSULTANTS:		ARCHITECT/ENGINEERS:		Drawing Title FIRE PROTECTION PLAN NEW ADDITION	Project Title LAUNDRY UPGRADES	Project Number 598-12-122	CENTRAL ARKANSAS VETERANS AFFAIRS HEALTHCARE SYSTEM
				Approved Project Director	Location LITTLE ROCK, ARKANSAS	Building Number 159	
Revisions				Date MAY 21, 2013	Checked ROW	Drawn JMM	
Date						Dwg. 1 of 1	