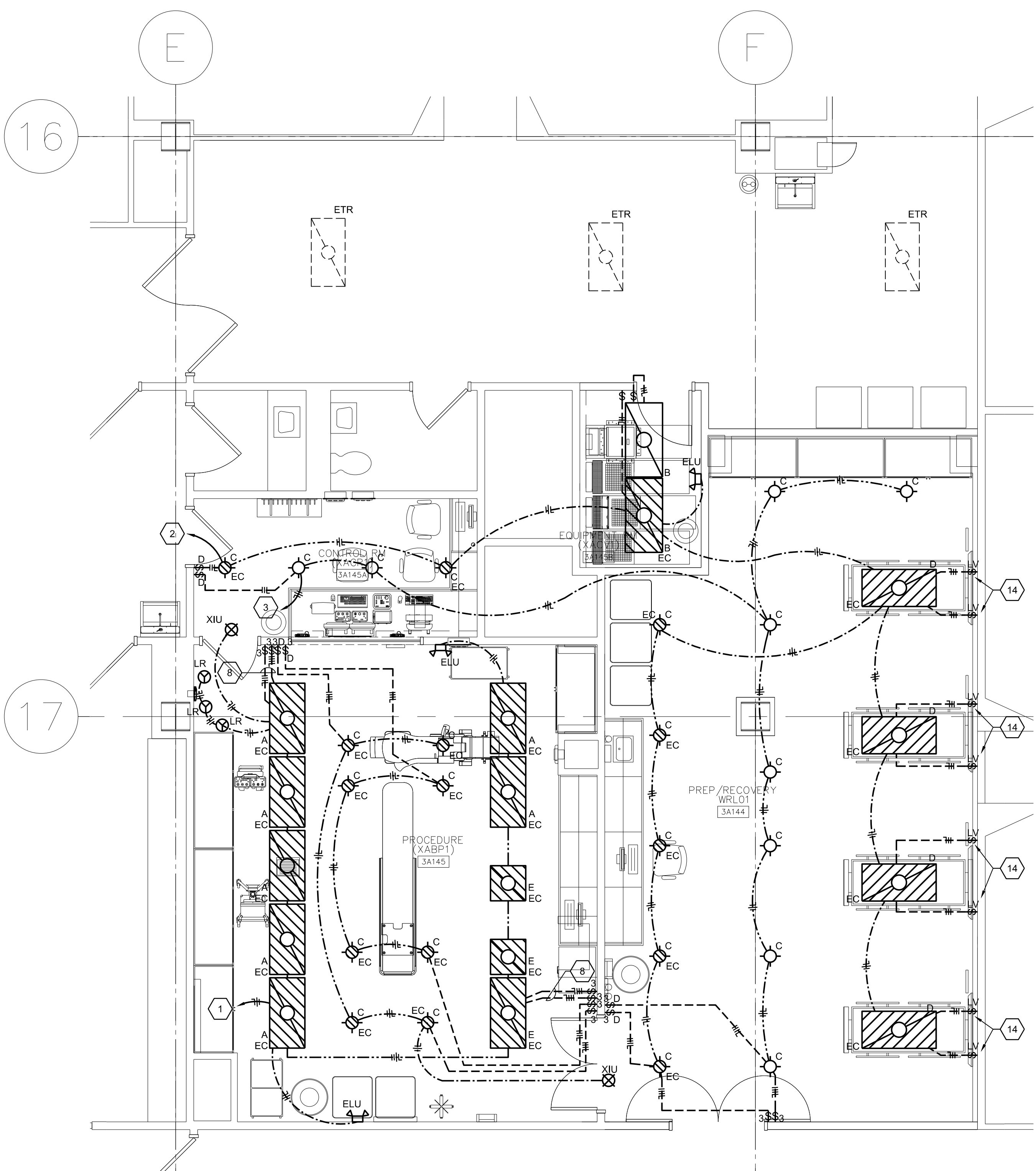
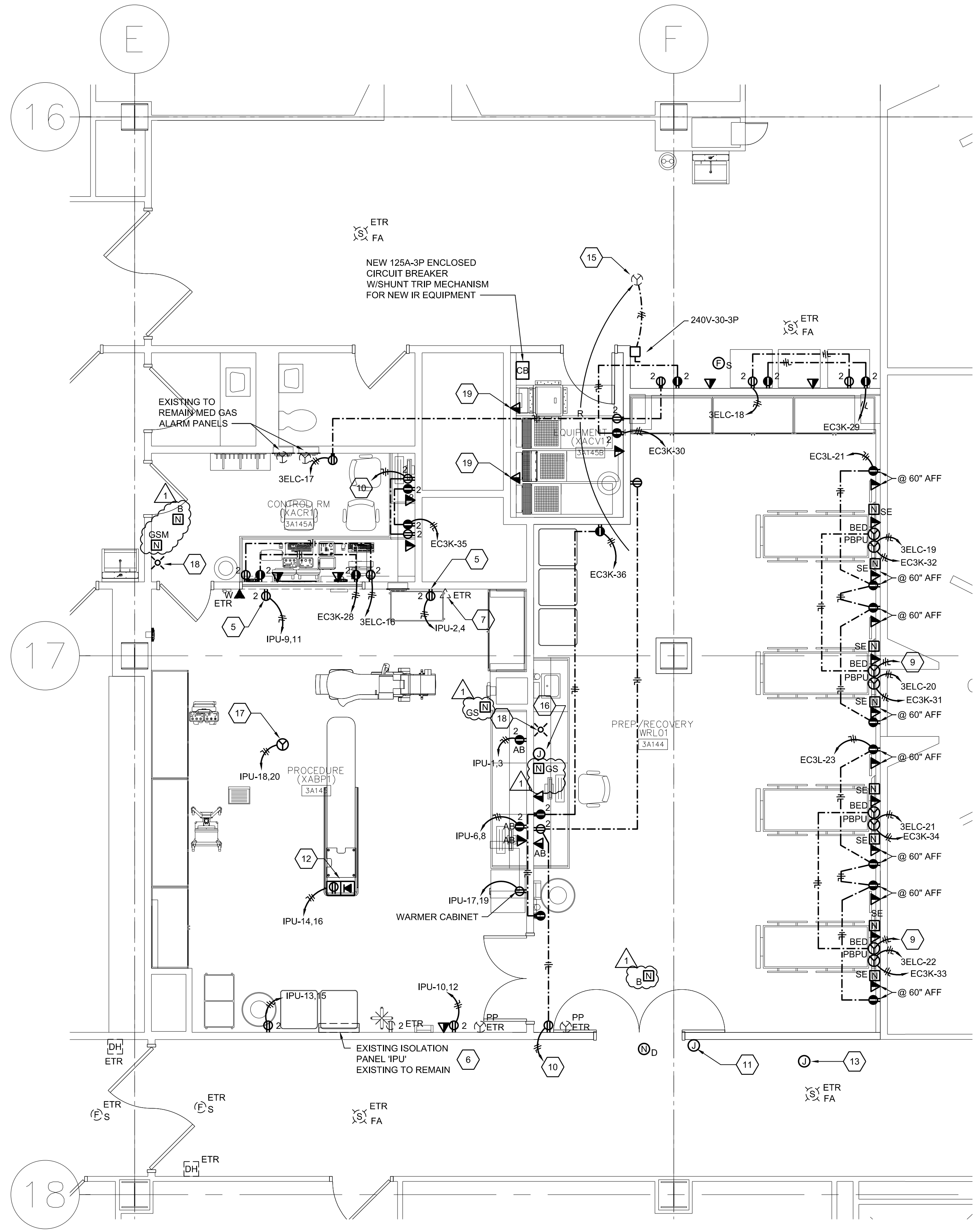


three inches = one foot
one and one half inches = one foot
one inch = one foot
three quarters inch = one foot
one half inch = one foot
three eighths inch = one foot
one quarter inch = one foot
one eighth inch = one foot



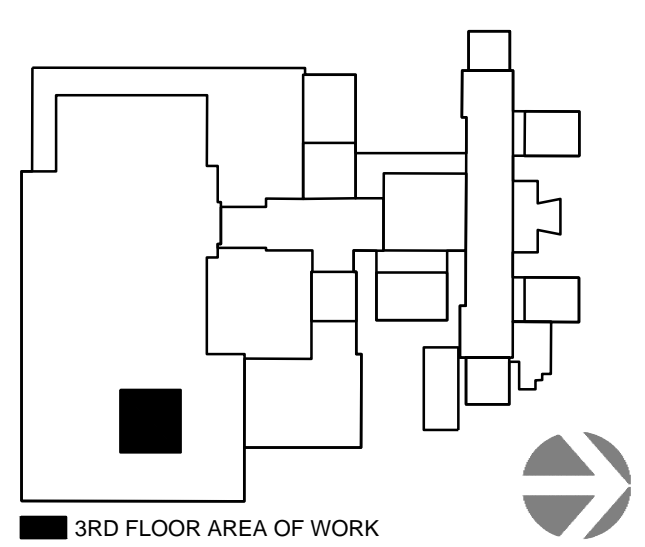
1 PARTIAL THIRD FLOOR PLAN - LIGHTING
Scale: 1/4" = 1'-0"



2 PARTIAL THIRD FLOOR PLAN - POWER AND SIGNAL
Scale: 1/4" = 1'-0"

GENERAL NOTES THIS DRAWING:
1. REFER TO DRAWING ES102 FOR EXISTING BRANCH PANEL LOCATIONS.

- KEYNOTES THIS DRAWING:**
1. EXTEND AND RECONNECT EXISTING EMERGENCY CRITICAL BRANCH CIRCUIT, FROM PANEL 'EC3J', RETAINED DURING DEMOLITION PHASE TO NEW FIXTURES.
 2. EXTEND AND RECONNECT EXISTING EMERGENCY CRITICAL BRANCH CIRCUIT, FROM PANEL 'EC3G', RETAINED DURING DEMOLITION PHASE TO NEW FIXTURES.
 3. EXTEND AND RECONNECT EXISTING NORMAL POWER BRANCH CIRCUIT, FROM PANEL '3EHA', RETAINED DURING DEMOLITION PHASE TO NEW FIXTURES.
 4. EXTEND BRANCH CIRCUIT TO VISUAL WARNING SIGNAL LIGHTS IN INTERSTITIAL FLOOR ABOVE.
 5. PROVIDE NEW RECEPTACLE IN EXISTING ROUGH-IN LOCATION LEFT FROM DEMOLITION, RE-USE CONCEALED CONDUIT TO GAIN ACCESS TO CEILING SPACE ABOVE.
 6. EC SHALL CLEAN PANEL INTERIOR AND EXTERIOR AS WELL AS TEST EXISTING METERING TO ENSURE LIM METER IS WITHIN APPLICABLE ISOLATION PANEL STANDARDS.
 7. EC SHALL PROVIDE TWO NEW DATA JACKS IN EXISTING OUTLET AND TWO NEW DATA CABLE FROM JACKS TO TELECOM CLOSET.
 8. EACH SWITCH SHALL CONTROL ONE BALLAST IN EACH FIXTURE.
 9. MATCH, SPlice, EXTEND AND CONNECT EXISTING NORMALEMERGENCY BRANCH CIRCUIT RETAINED DURING DEMOLITION OF PREVIOUS HEADWALL UNIT TO NEW BED LOCATOR RECEPTACLE.
 10. MATCH, SPlice, EXTEND AND CONNECT EXISTING NORMAL POWER BRANCH CIRCUIT RETAINED DURING DEMOLITION OF PREVIOUS HEADWALL UNIT TO NEW RECEPTABLES.
 11. PROVIDE 4"x4" RECESSED OUTLET BOX W/BLANK COVERPLATE @ 42" AFF FOR CARD READER PROVIDED BY OTHERS. FROM OUTLET BOX, PROVIDE 1" C. WNYLON PULLCORD, TO ABOVE CEILING CABLE TRAY.
 12. COORDINATE FINAL LOCATION OF FLOOR BOX WITH FINAL TABLE PLACEMENT. CONFIRM ALL ROUGH-INS WITH ARCHITECT.
 13. DOUBLE GANG, FLUSH WITH CEILING, OUTLET BOX WITH BLANK COVER FOR CAMERA EQUIPMENT PROVIDED BY OTHERS. PROVIDE 3/4" C FROM OUTLET BOX TO EXISTING CABLE TRAY. COORDINATE FINAL LOCATION OF OUTLET BOX WITH ARCHITECT.
 14. PROVIDE SWITCHES INTEGRAL TO PREFABRICATED PATIENT BEDSIDE UNIT.
 15. RELOCATED SPLIT SYSTEM AIR HANDLING UNIT. FROM JUNCTION BOX PROVIDE DURING DEMOLITION, MATCH, SPlice, AND EXTEND NEW CONDUCTORS TO SPLIT SYSTEM LOCATION. PROVIDE NEW DISCONNECT SWITCH AS INDICATED AHEAD OF SPLIT SYSTEM TO ALLOW FOR LOCAL DISCONNECTION OF POWER.
 16. DOUBLE GANG, RECESSED OUTLET BOX WITH BLANK COVER FOR MONITOR EQUIPMENT PROVIDED BY OTHERS. PROVIDE 3/4" C FROM OUTLET BOX TO EXISTING CABLE TRAY. COORDINATE FINAL LOCATION OF OUTLET BOX WITH ARCHITECT.
 17. FINAL CONNECTION TO SURGICAL LIGHT TRANSFORMER. FINAL LOCATION SHALL BE DETERMINED BY EQUIPMENT SUPPLIER, VERIFY FINAL LOCATION IN FIELD BEFORE PERFORMING ROUGH-INS.
 18. FRO NEW FIRE ALARM STROBE DEVICE, PROVIDE 2 #12 IN 3/4" C. TO EXISTING CORRIDOR STROBE CIRCUIT.
 19. COORDINATE LOCATION OF OUTLET WITH IR EQUIPMENT WITHIN ROOM.



<div><div></div><div>ADDENDUM #1</div></div>		5/7/14		<div>CONSULTANTS</div> <div>MEP ENGINEERING</div> <div>H.F. LENZ CO.</div> <div>1407 Scarp Avenue Johnstown, PA 15904 814.269.9300</div>		<div>ENVIRONMENTAL ENGINEER</div> <div>LAWHON and ASSOCIATES, INC.</div> <div>975 Eastwind Drive Suite 190 Westerville, Ohio 43081 614.818.5200</div>		<div>ENGINEER</div> <div><div><div></div><div>COMMONWEALTH OF PENNSYLVANIA</div><div>PROFESSIONAL ENGINEER</div><div>TIMOTHY M. FARHART</div><div>1000</div></div></div>	
--	--	--------	--	--	--	---	--	--	--