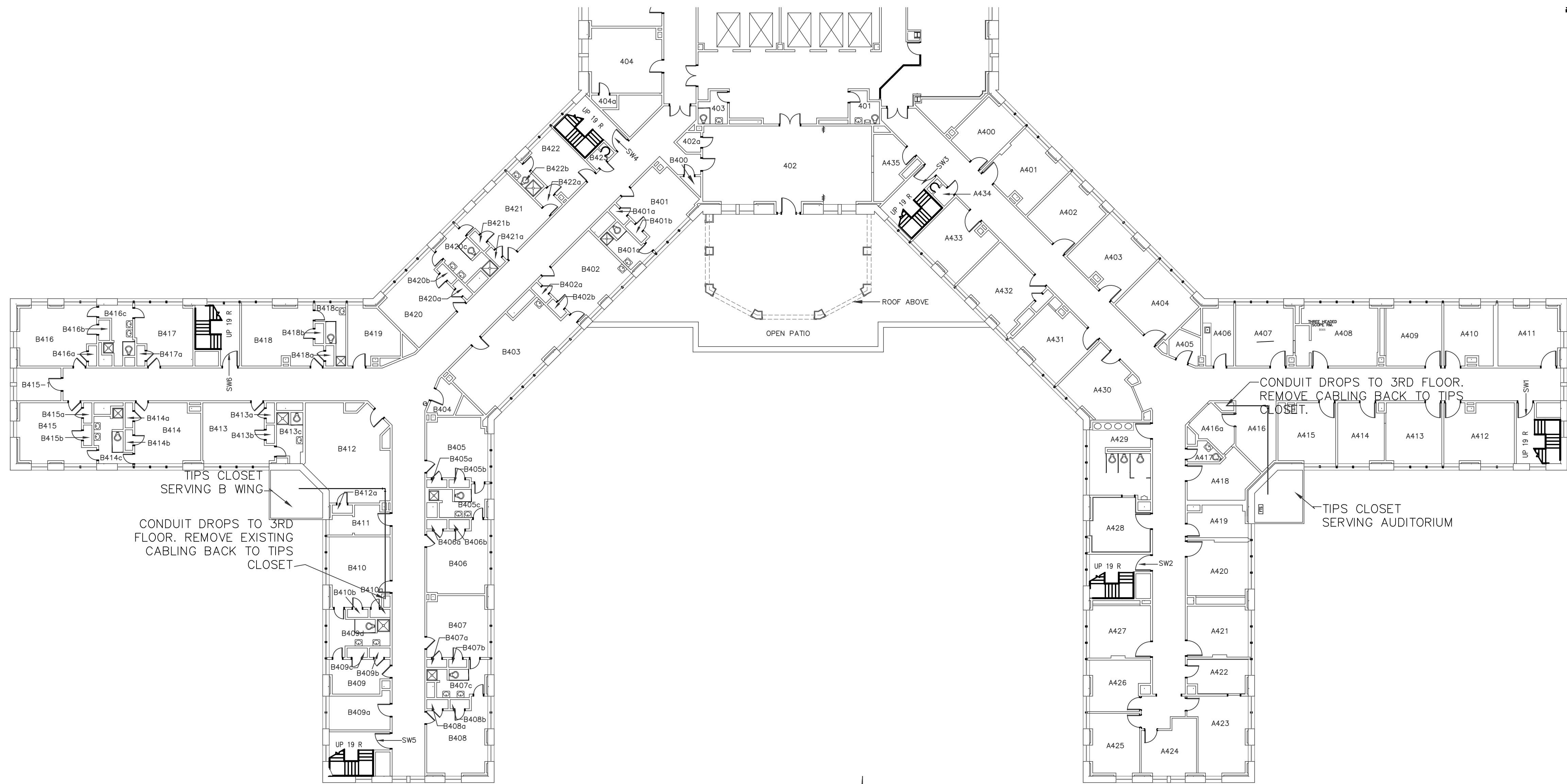
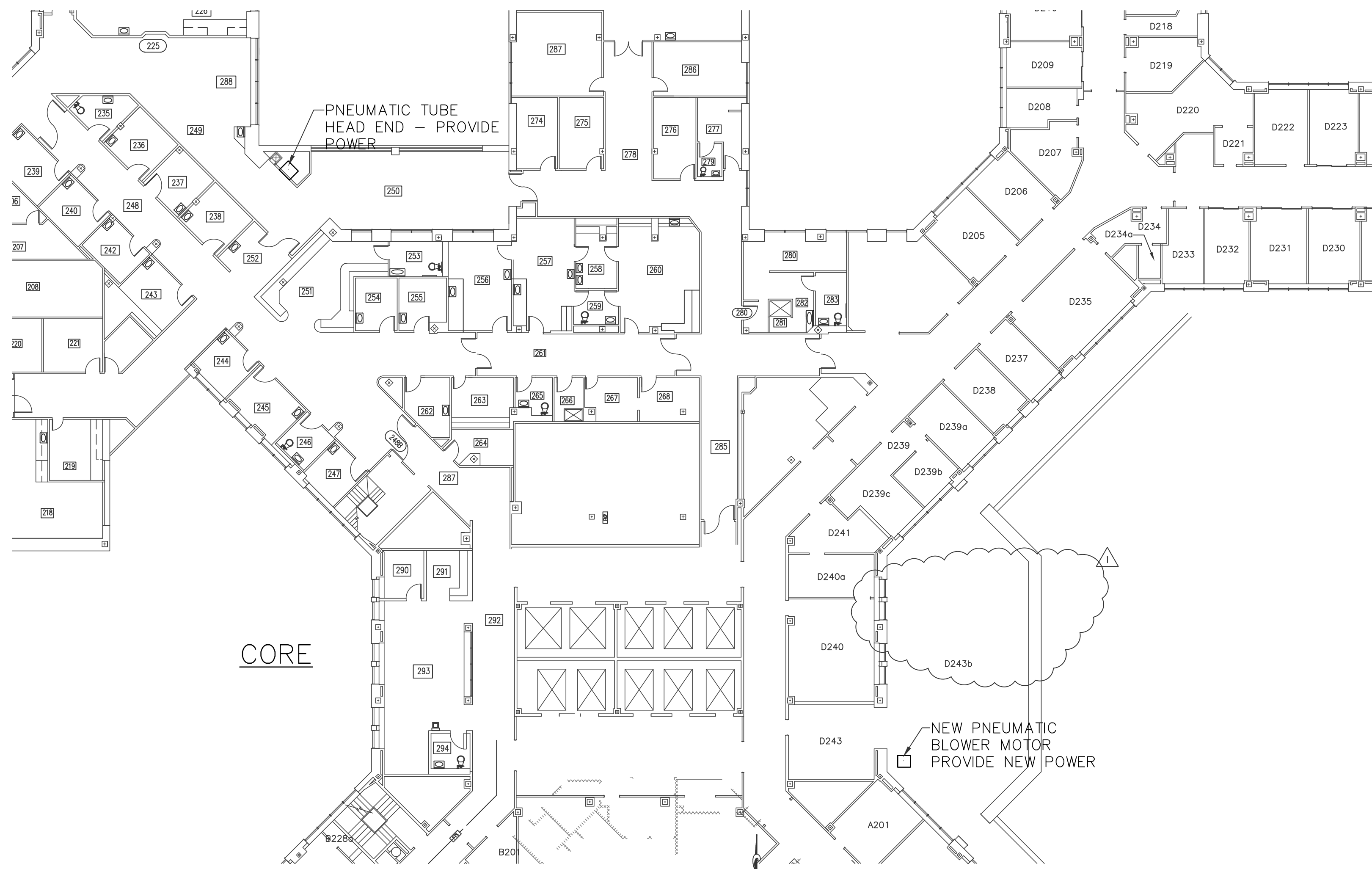


three inches = one foot  
one and one half inches = one foot  
one inch = one foot  
three quarters inch = one foot  
one half inch = one foot  
three eighths inch = one foot  
one quarter inch = one foot  
one eighth inch = one foot

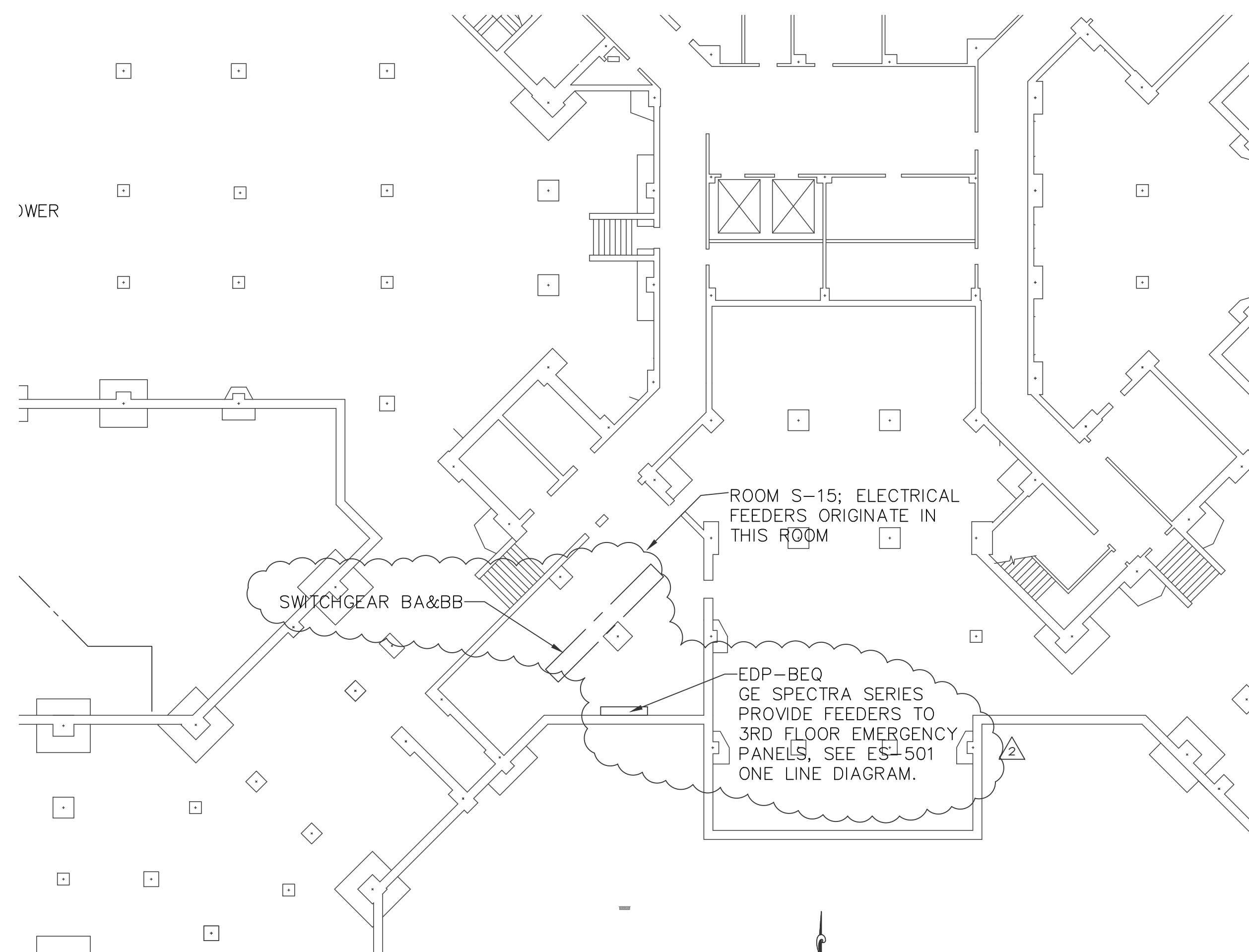
ES-400.dwg 5-08-14 09:16:14 AM palmatiers



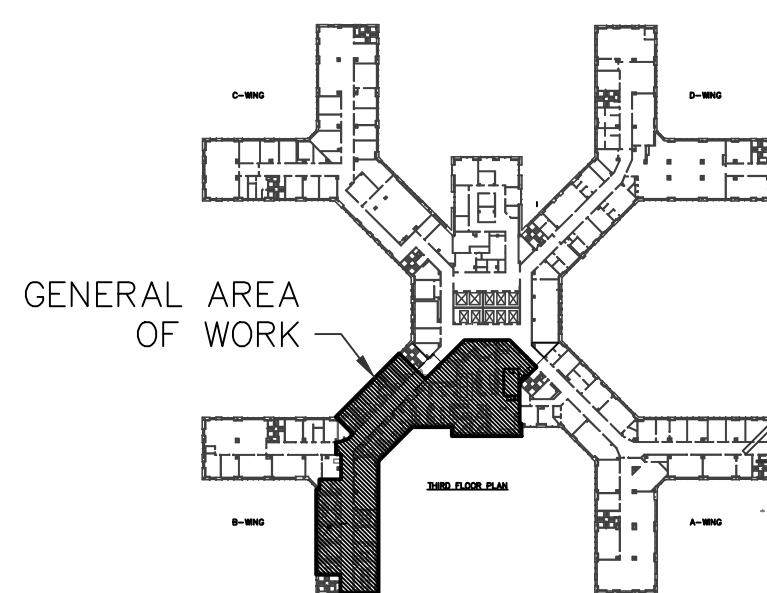
1 FLOOR PLAN - FOURTH FLOOR  
SCALE: 1/16" = 1'-0"



1 FLOOR PLAN - SECOND FLOOR  
SCALE: 1/16" = 1'-0"



1 FLOOR PLAN - SUB-BASEMENT  
SCALE: 1/16" = 1'-0"



0 KEY PLAN - BLDG. 1 THIRD FLOOR  
SCALE: N.T.S.

SCALE: 1/8"=1'-0"

RFI#4 RESPONSE 2014/05/08 RFI#3 RESPONSE 2014/04/29 100% DESIGN SUBMISSION 2014/04/03 95% DESIGN SUBMISSION REVISED 2014/02/23 95% DESIGN SUBMISSION 2014/01/31 65% DESIGN RE-SUBMISSION 2013/09/30 65% DESIGN SUBMISSION 2013/06/04 30% DESIGN SUBMISSION 2013/01/18		CONSULTANTS: <b>Engineering and Land Surveying, P.C.</b> 1533 Crescent Road - Clifton Park, NY 12065		ARCHITECT/ENGINEERS: <b>HA2F</b> CONSULTANTS IN ENGINEERING 1 VAN PATTEN DR, CLIFTON PARK, N.Y. 12065 (518) 877-8566		Drawing Title <b>ELECTRICAL NEW WORK 3B DETAIL PLANS</b>		Project Title <b>STRATTON VAMC 3RD FLOOR B WING AND CORE CONSOLIDATE LABS RENOVATION</b>		Project Number 528A8-10-801 Building Number BLDG. 1 Drawing Number <b>ES-400</b> Dwg. 47 of 54		Office of Construction and Facilities Management Department of Veterans Affairs	
Approved Project Director Date 04/03/2014		Checked SMP		Drawn SMP		Location STRATTON VA MEDICAL CENTER NY		Date 04/03/2014		Checked SMP		Drawn SMP	