

FIRE CODE INFORMATION

APPLICABLE CODE: NFPA 101 LIFE SAFETY CODE, 2009 EDITION

CONSTRUCTION TYPE I: FULLY SPRINKLERED

OCCUPANCY TYPE: BUSINESS (CHAPTER 38)

REQUIRED FIRE RESISTANCE RATINGS:

- COLUMN: 2 HOURS
- FLOOR BEAM: 2 HOURS
- ROOF BEAM: 2 HOURS
- FLOOR-CEILING: 2 HOURS
- ROOF-CEILING: 2 HOURS
- EXIT CORRIDORS: NO FIRE RATING, SELF-LATCHING DOORS ARE REQUIRED. WALLS AND CEILING SHALL BE CONSTRUCTED TO RESIST PASSAGE OF SMOKE

FIRE WALLS: 2 HOURS; 1 HOUR AROUND STORAGE ROOMS IN EXCESS OF 100 SQFT

SHAFTS: 2 HOURS

FIRE CODE LEGEND

FW-2 FW-2 2 HOUR FIRE WALL

FW-1 FW-1 1 HOUR FIRE WALL

SR SR SR SR SMOKE RESISTANT

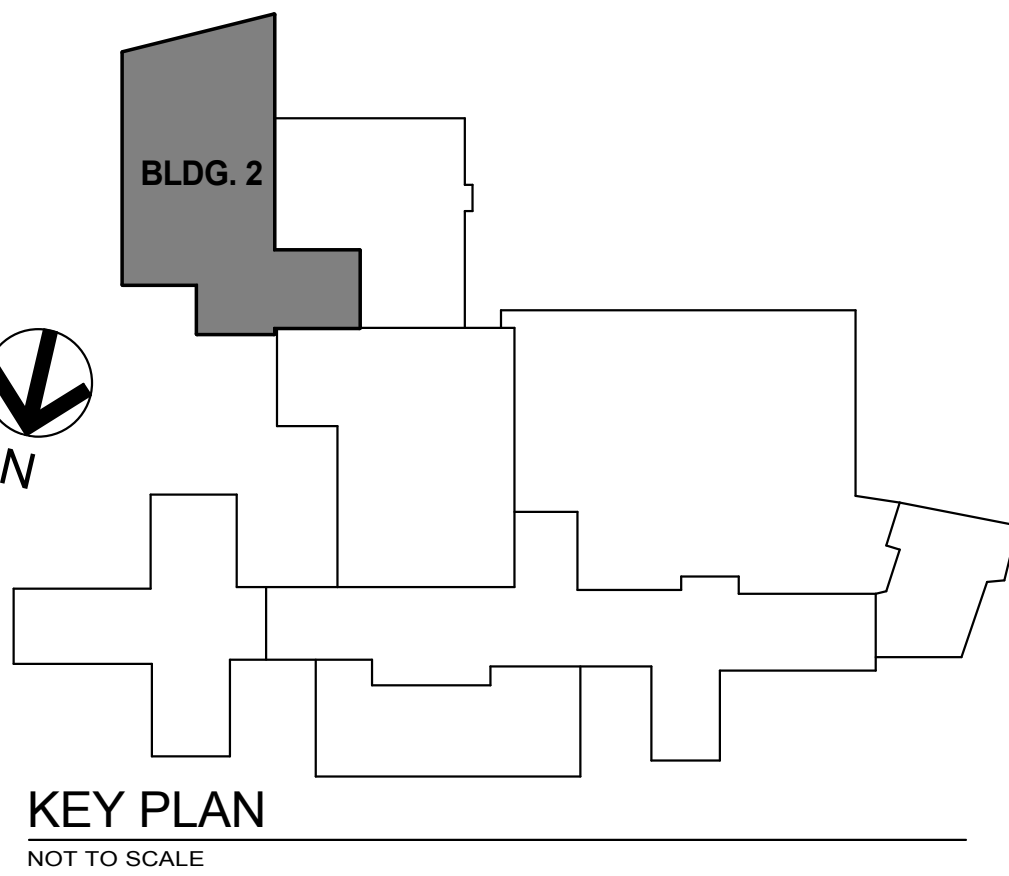
FEC FIRE EXTINGUISHER

--- LIMITS OF CONSTRUCTION

← EXIT

EXISTING WAREHOUSE

FIRE CODE PLAN LEVEL 1
1/8" = 1'-0"



2-1

SHIVEHATTERY
ARCHITECTURE+ENGINEERING

2834 Northgate Drive | Iowa City, Iowa 52245
319.354.5040 | fax 319.354.6921 | shive-hattery.com
Iowa | Illinois | Missouri

Drawing Title

FIRE CODE PLAN - LEVEL 1

Approved: Division Chief

Approved: Service Director

Project Title
RENOVATE AND
EXPAND SPACE FOR
PATIENT SUPPORT
AREAS

Building Number
2

Location
IOWA CITY VA HEALTH CARE SYSTEM
IOWA CITY, IOWA

Checked
Approver

Drawn
EAS

Date 12-17-2012
CONSTRUCTION
DOCUMENTS

Project No.
DVA# 6536-311
S-H# 110240-0

DRAWING No.
2-FC1
Dwg. 1 of 3

Veterans
Administration