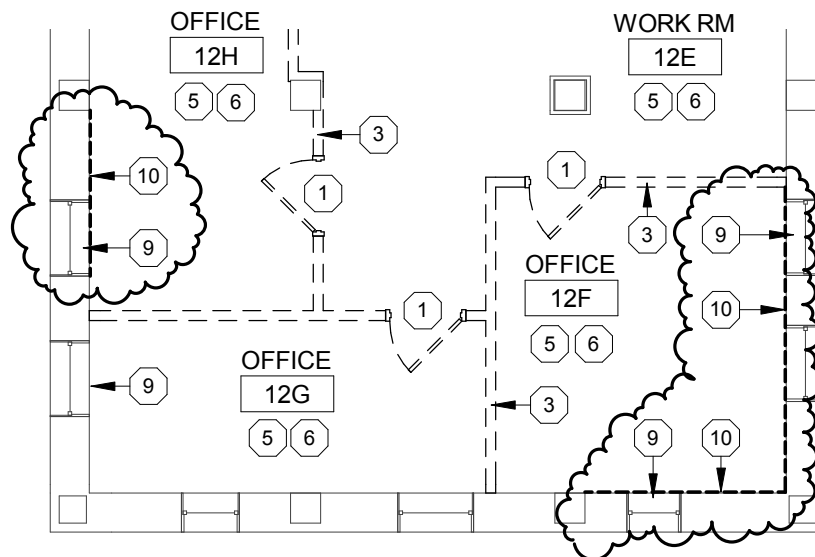


DEMOLITION KEYNOTES

NUMBER	DESCRIPTION
9	CAREFULLY REMOVE EXISTING RADIATOR. COORDINATE REMOVAL WITH HVAC DOCUMENTS AND NEW WALL CONSTRUCTION WITH ARCHITECTURAL WALL INFILL DETAIL.
10	CAREFULLY REMOVE BOTTOM 2'-0" OF EXISTING WALL AS REQUIRED TO INSTALL NEW ELECTRICAL BACK BOXES. COORDINATE EXTENT OF REMOVAL WITH THE ELECTRICAL CONSTRUCTION DOCUMENTS.

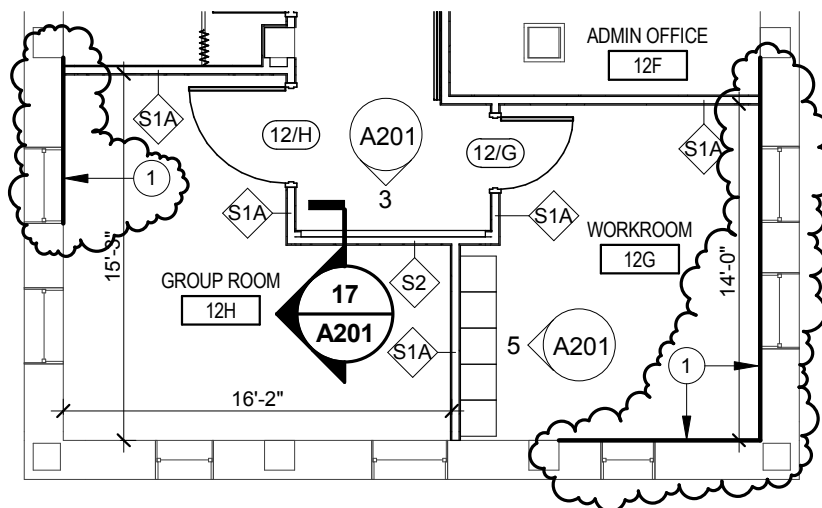


1

PARTIAL BASEMENT PLAN - DEMO

1/8" = 1'-0"

REFER TO SHEET AD100



2

PARTIAL BASEMENT PLAN - NEW WORK

1/8" = 1'-0"

REFER TO SHEET A100

NUMBER	DESCRIPTION
1	PATCH AND REPAIR WALLS REQUIRED TO MATCH EXISTING CONSTRUCTION. COORDINATE WITH DEMOLITION PLANS.

PROJECT:
Renovate B3 Basement for Acupuncture /
Chiropractic Services at the Canandaigua VA
Medical Center

PROJECT #: 528A5-13-532

A|E works

6587 HAMILTON AVENUE
PITTSBURGH, PA 15206
PH: 412.287.7333 FAX: 412.287.7334
www.ae-works.com

DRW / CHK:
SB / RW
SCALE:
1/8" = 1'-0"

© AE Works Ltd.

ADDENDUM SKETCH

AS-A01

05/08/14