



DEPARTMENT OF VETERANS AFFAIRS

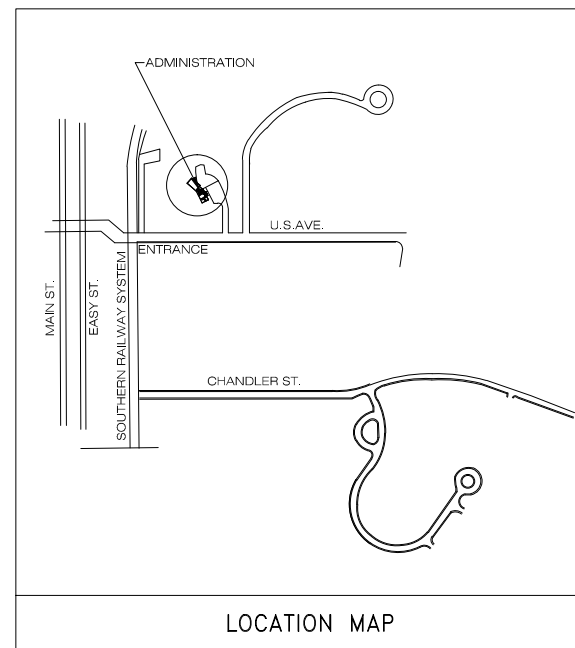
CULPEPER NATIONAL CEMETERY

PROJECT #: 839-NRM14-0002

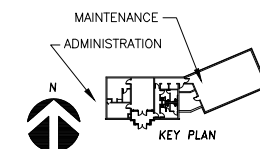


305 U.S. AVENUE CULPEPER, VA 22701

ADMINISTRATION BUILDING MODIFICATIONS

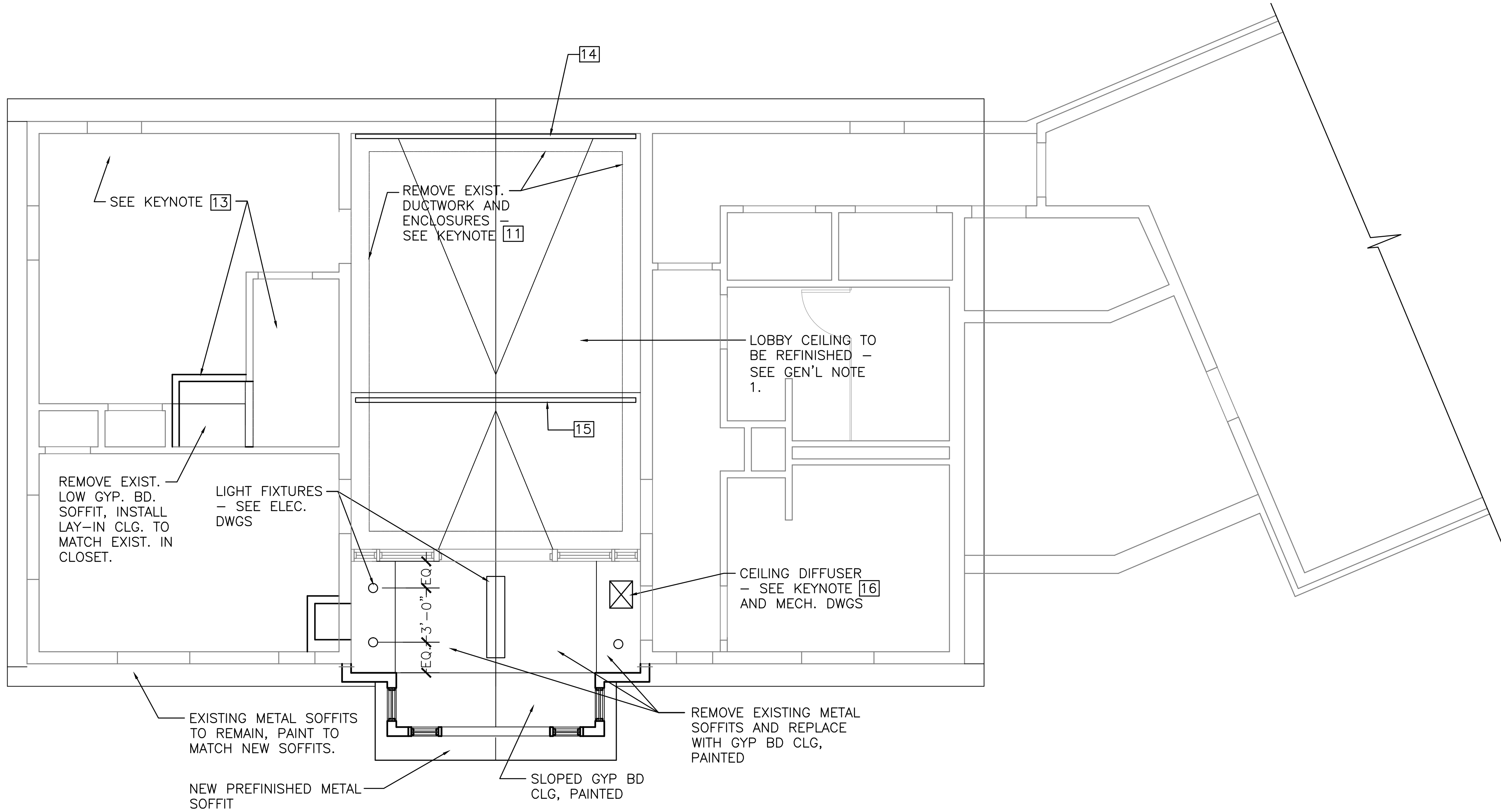


INDEX OF DRAWINGS	
SHEET NO.	SHEET TITLE
X-001	COVER AND SHEET INDEX
A-101	FLOOR PLAN & RCP
A-102	ROOF PLAN & EXT. ELEVATIONS
A-103	ENLARGED PLANS & DETAILS
A-104	SECTIONS AND DETAILS
M-101	HVAC PLAN
E-101	ELECTRICAL PLAN



BID PACKAGE

Revisions	Date	PRIME:	SURVEYOR:	OTHER:	NATIONAL CEMETERY ADMINISTRATION	Drawing Title	Project Title	Date
		amec				COVER SHEET AND INDEX	ADMINISTRATION BUILDING MODIFICATIONS CULPEPER NATIONAL CEMETERY	April 11, 2014
		AMEC Environment & Infrastructure, INC. 3200 TOWN POINT DR. KENNESAW, GA 30144 AMEC PROJECT: 6151-12-0118				Approved: Director, Technical Support Service	Building Number XX	Checked JCA
AMEC PROJECT: 6151-12-0118			Approved: Chief, Architectural & Engineering Division			Location CULPEPER, VIRGINIA	DRAWING NO. X-001	Dwg. 1 of 7



GENERAL NOTES

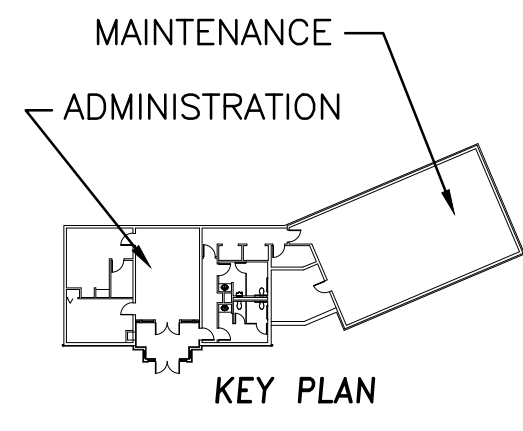
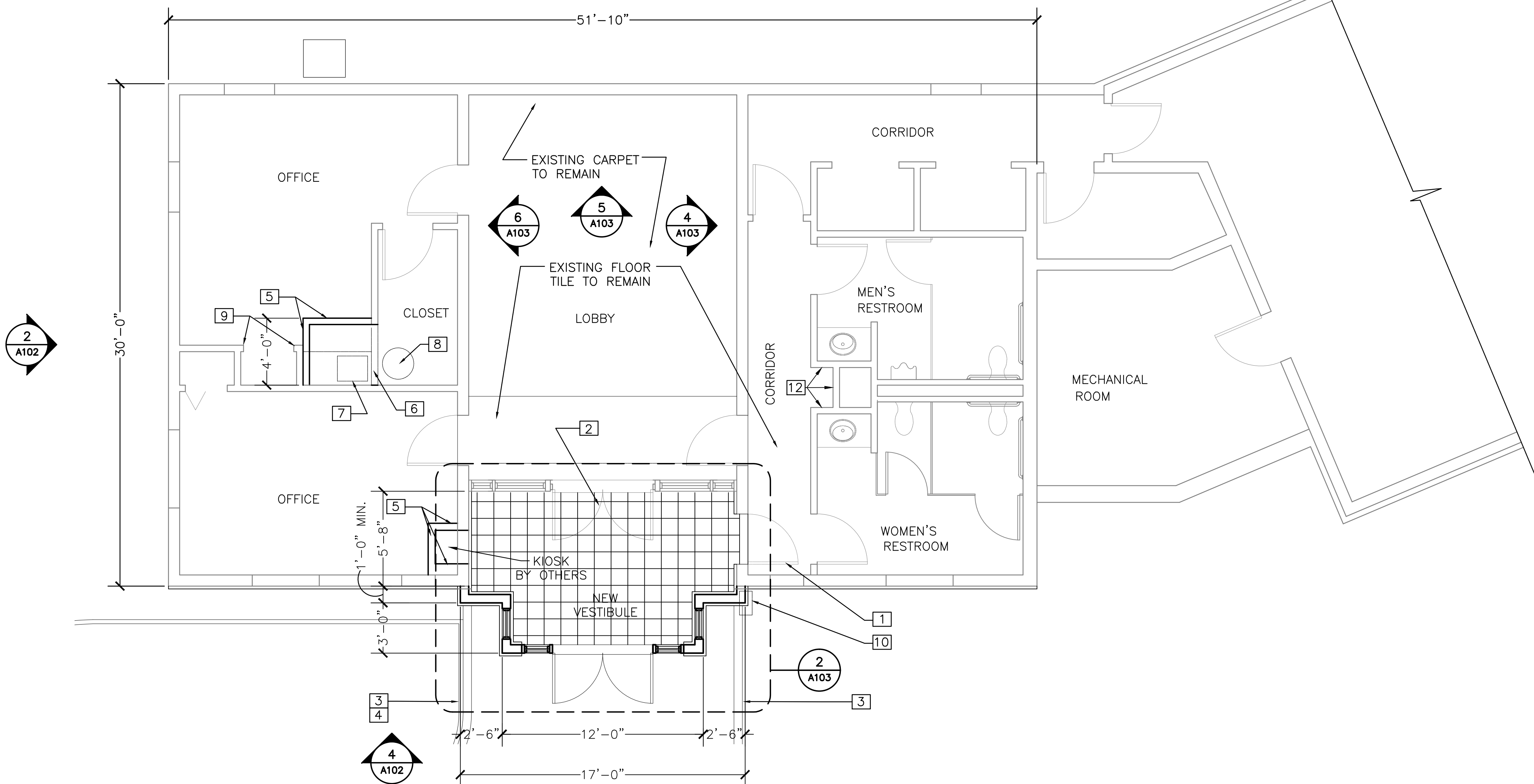
1. REPAIR AND REFINISH EXIST. GYP. BD. CEILING IN LOBBY. REPLACE DEFECTIVE MATERIAL AND RESTORE GYP. BD. SURFACE AS REQUIRED TO RECEIVE PAINT FINISH SPECIFIED FOR NEW CONSTRUCTION.
2. OTHER CEILINGS ARE TO REMAIN IN EXIST. CONDITION EXCEPT AS OTHERWISE NOTED.
3. WHERE CEILINGS, FINISHES, OR ADJACENT CONSTRUCTION ARE DAMAGED BY DEMOLITION AND NEW CONSTRUCTION THEY SHALL BE PATCHED, REPAIRED AND/OR PAINTED TO MATCH EXISTING.
4. DIMENSIONS SHOWN ON THE DRAWINGS ARE NOMINAL AND MUST BE FIELD VERIFIED BY THE CONTRACTOR PRIOR TO CONSTRUCTION OF NEW WORK.

KEYNOTES

- 1 REMOVE EXISTING DOOR LEAF AND PLUG HOLES IN FRAME. PAINT EXIST. DOOR FRAME TO REMAIN.
- 2 EXISTING ENTRY DOORS TO BE RETROFITTED WITH MAGNETIC LOCK CONTROLLED FROM DESK SWITCH.
- 3 EXISTING FLUSH CONC. CURB TO REMAIN
- 4 EXISTING BRICK BORDER TO REMAIN
- 5 NEW PARTITION: 2 X 4 WOOD STUDS @ 16" O.C. W/ 1 LAYER 1/2" GYP. BD. EACH SIDE. INSTALL NEW BASE TO MATCH EXISTING.
- 6 EXISTING PARTITION TO BE REMOVED
- 7 EXISTING CABINET AND SINK TO BE REMOVED.
- 8 EXISTING WATER HEATER TO BE REMOVED
- 9 EXISTING DOOR FRAME TO REMAIN
- 10 EXISTING MAILBOX TO BE REMOVED AND RELOCATED
- 11 REMOVE EXIST. DUCTWORK AND DUCTWORK ENCLOSURES INSIDE LOBBY. TERMINATE DUCTWORK AS INDICATED ON MECHANICAL DRAWINGS. SEE WALL ELEVATIONS ON SHEET A-103 FOR ADDITIONAL INFORMATION.
- 12 PATCH AND PAINT WALLS TO MATCH EXISTING ADJACENT TO REMOVED KIOSK. PATCH FLOORING AS REQUIRED IF DAMAGED.
- 13 REMOVE AND REINSTALL EXISTING LAY-IN CEILING COMPONENTS AS REQUIRED FOR HVAC MODIFICATIONS. REPLACE EXISTING CEILING GRID AS REQUIRED TO ACCOMMODATE NEW CONSTRUCTION.
- 14 WALL MOUNTED TRACK LIGHTING- SEE WALL ELEVATION SHEET A-103 AND ELEC. DRAWINGS.
- 15 CEILING MOUNTED TRACK LIGHTING- SEE ELEC. DRAWINGS.
- 16 COORDINATE LIGHT FIXTURE AND DIFFUSER LOCATIONS WITH EXISTING SOFFIT FRAMING - DISTANCE BETWEEN EXISTING FIXTURES TO BE 2'-6" MIN., 3'-6" MAX.

INTERIOR FINISH SCHEDULE

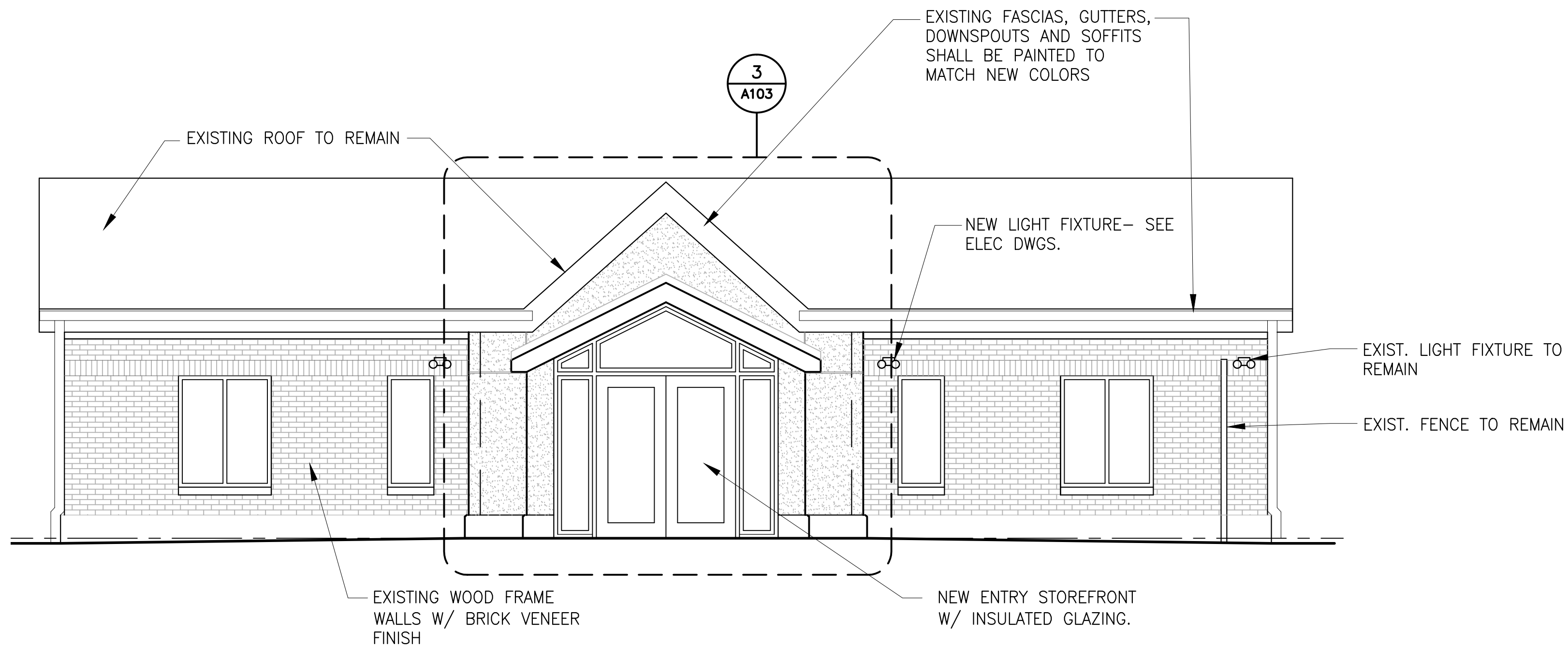
1. FLOOR TILE AT NEW VESTIBULE (FT-1): MARRAZZI GLAZED PORCELAIN TILE JJB5 GRAPHITE - TR 6404 09 12X12X1/8" THICK GRANITE GRAPHITE TILE BY AMERICAN MARRAZZI TILE, INC.
2. ALL OTHER FINISHES TO MATCH EXISTING UNLESS NOTED OTHERWISE.



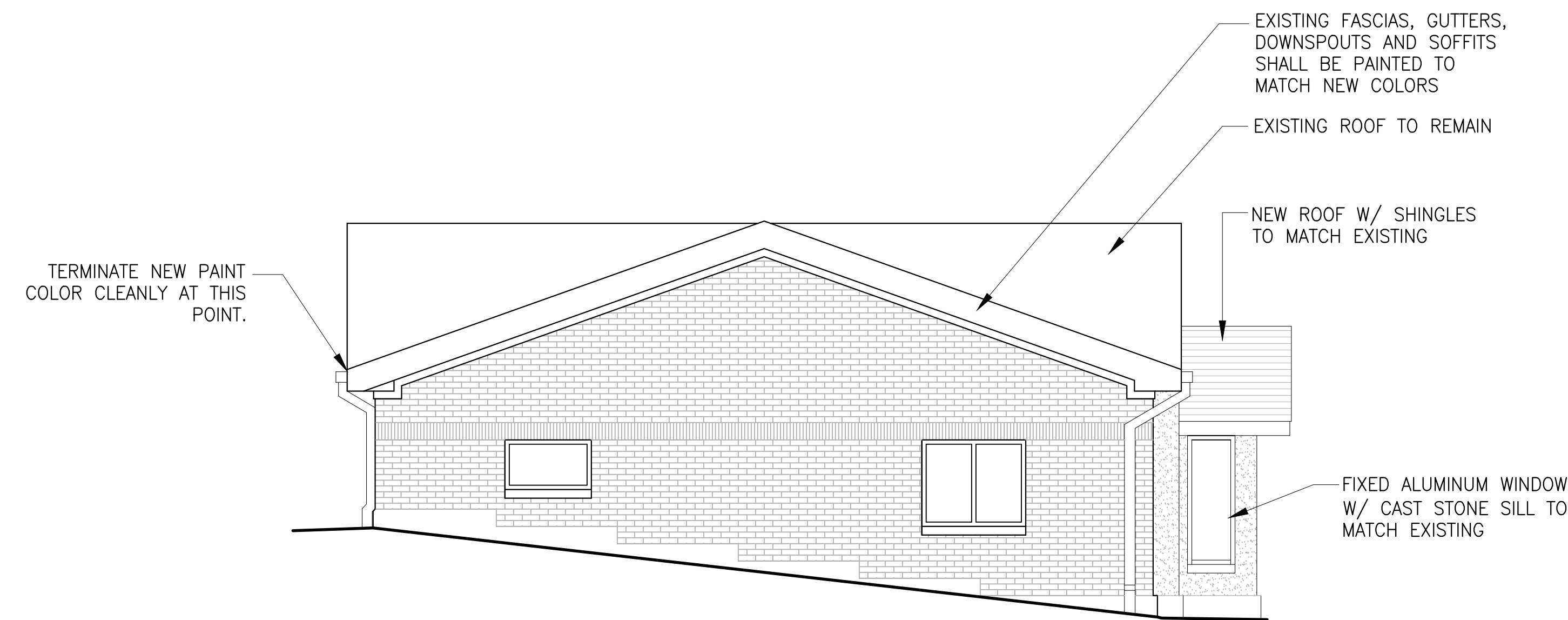
2 REFLECTED CEILING PLAN
A-101 SCALE 1/4" = 1'-0"

1 SCHEMATIC FLOOR PLAN
A-101 SCALE 1/4" = 1'-0"

<div>PRIME: amec AMEC Environment & Infrastructure, INC. 3200 TOWN POINT DR. KENNESAW, GA. 30144 AMEC PROJECT: 6151-12-0118</div>		<div>SURVEYOR: OTHER:</div>		<div> NATIONAL CEMETERY ADMINISTRATION</div>		<div>Drawing Title FLOOR PLAN & RCP</div> <div>Approved: Director, Technical Support Service Approved: Chief, Architectural & Engineering Division</div>		<div>Project Title ADMINISTRATION BUILDING MODIFICATIONS CULPEPER NATIONAL CEMETERY</div> <div>Building Number XX Checked JCA Drawn LKB Location CULPEPER, VIRGINIA</div>		<div>Date April 11, 2014 Project No. 839-NRM14-0002 DRAWING NO. A-101 Dwg. 2 OF 7</div>	
--	--	---------------------------------	--	---	--	---	--	--	--	--	--



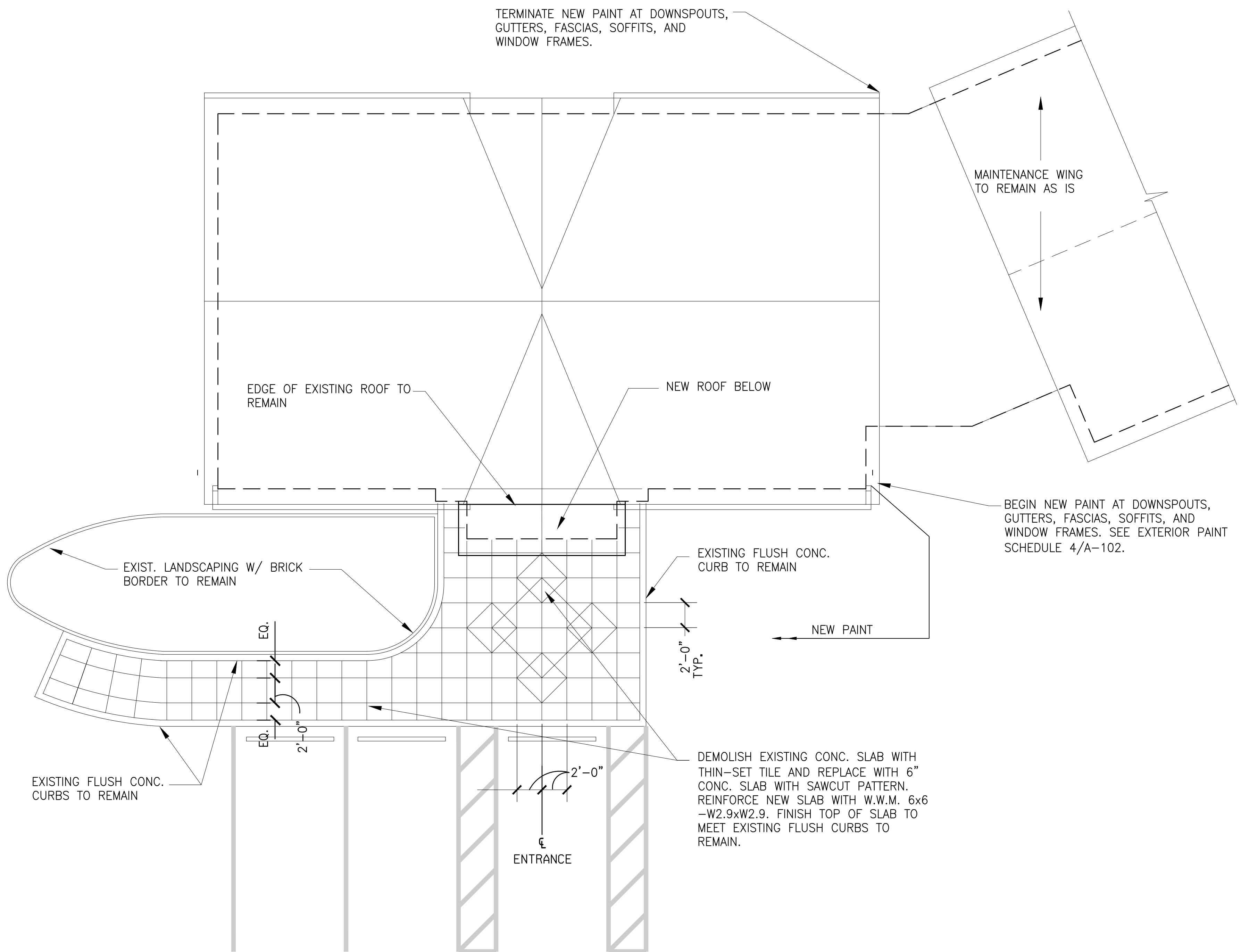
4 SOUTH ELEVATION
A-102 SCALE 1/4" = 1'-0"



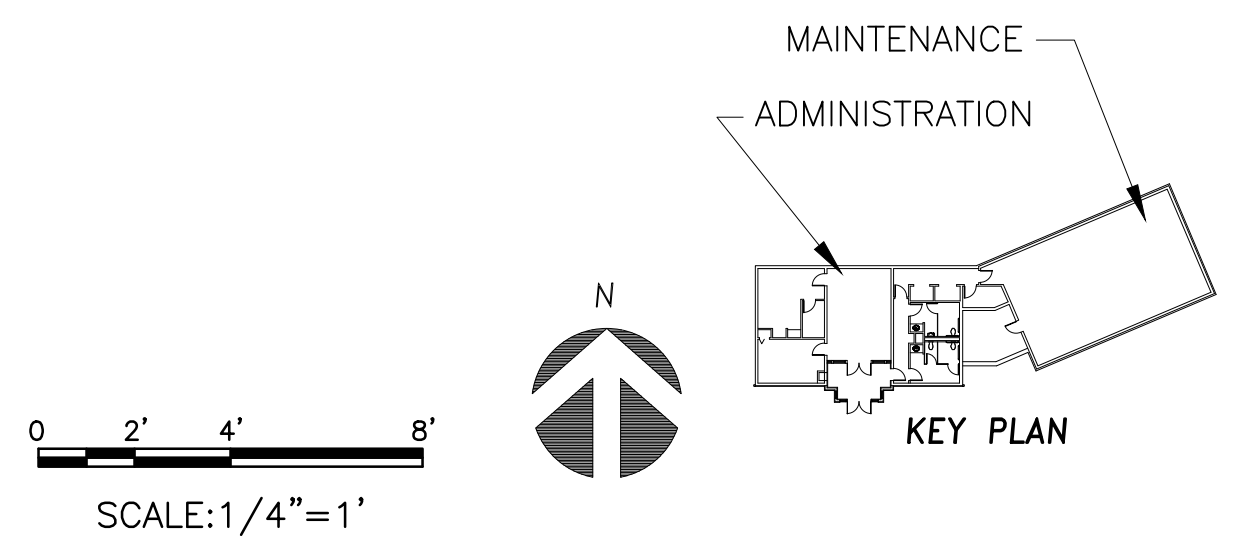
2 WEST ELEVATION
A-102 SCALE 1/4" = 1'-0"

DESIGNATION	LOCATION	PRODUCT
PT-1	DOWNSPOUTS, GUTTERS, FASCIAS AND SOFFITS	BEHR ANTIQUE TIN UL260-21
PT-2	EXTERIOR WINDOW FRAMES	BEHR SUEDE GRAY UL-260-3
PT-3	STUCCO	BEHR ELASTOMERIC STUCCO PAINT SANDSTONE BEIGE MS-41


1 EXTERIOR PAINT SCHEDULE
A-102 SCALE NTS

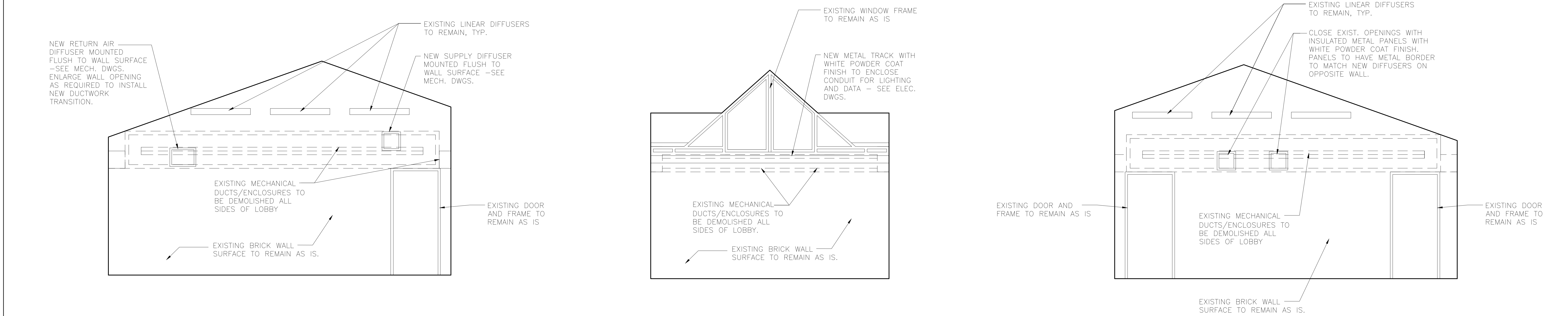


3 ROOF PLAN/HARDSCAPE PLAN
A-102 SCALE 3/16" = 1'-0"

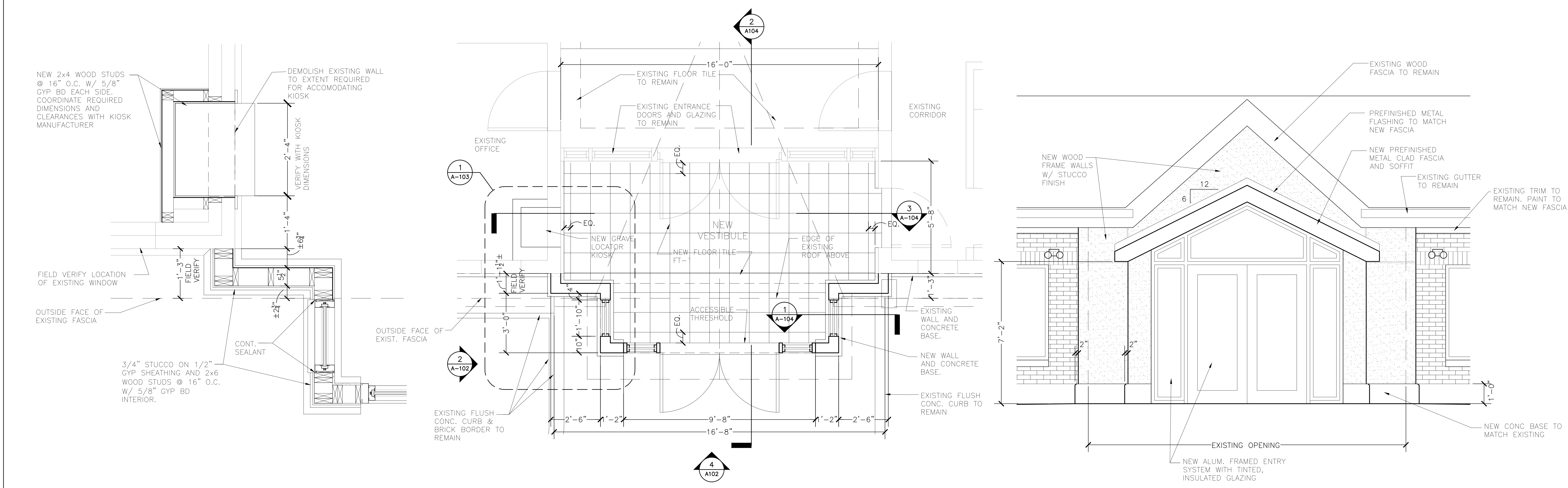


BID PACKAGE

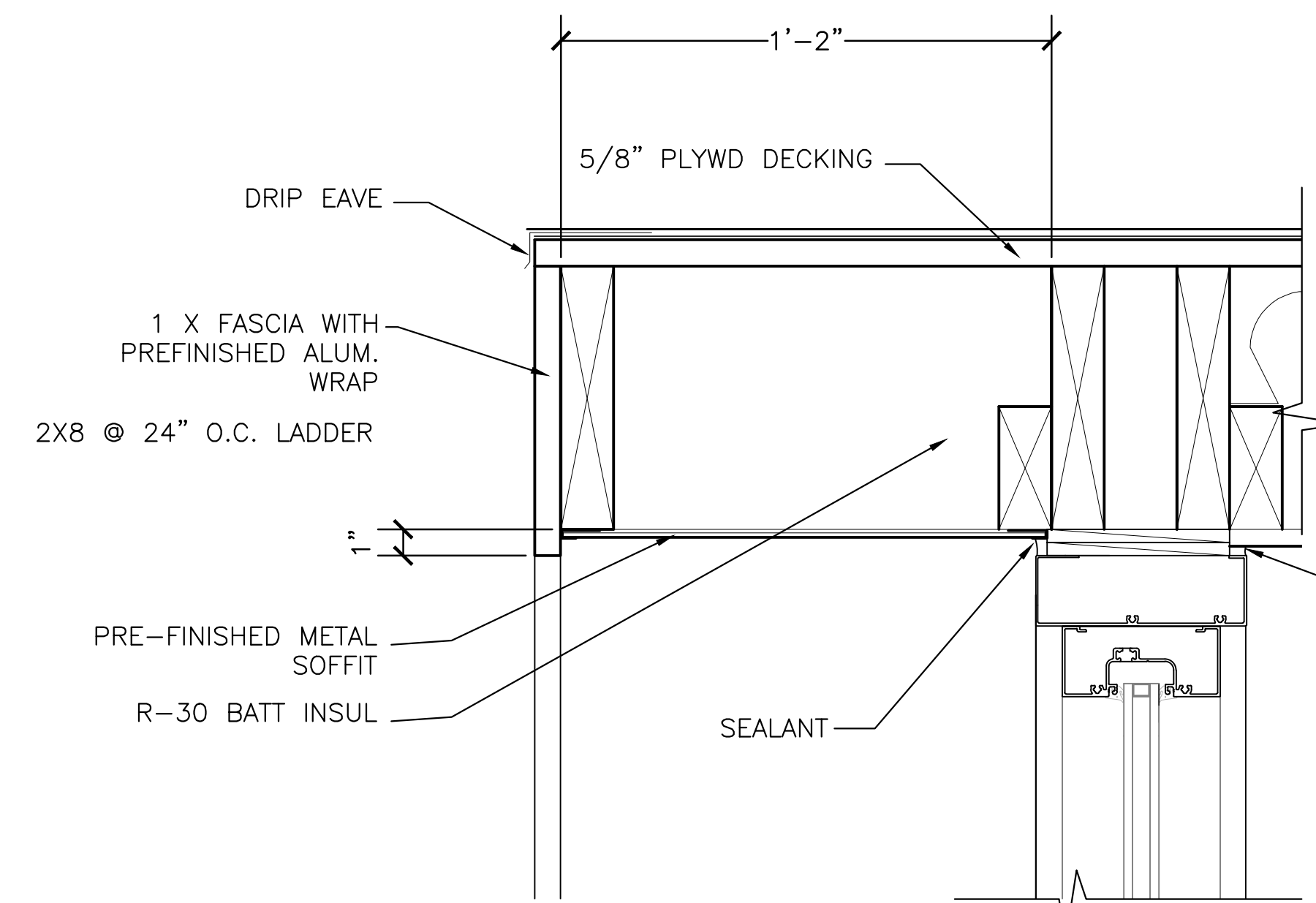
Revisions Date	amec AMEC Environment & Infrastructure, INC. 3200 TOWN POINT DR. KENNESAW, GA. 30144 AMEC PROJECT: 6151-12-0118	PRIME:	SURVEYOR:	OTHER:	 NATIONAL CEMETERY ADMINISTRATION	Drawing Title ROOF PLAN & EXT. ELEVATIONS	Project Title ADMINISTRATION BUILDING MODIFICATIONS CULPEPER NATIONAL CEMETERY	Date April 11, 2014		
						Approved: Director, Technical Support Service	Building Number XX	Checked JCA	Drawn LKB	Project No. 839-NRM14-0002
						Approved: Chief, Architectural & Engineering Division	Location CULPEPER, VIRGINIA			DRAWING NO. A-102
									Dwg. 3 OF 7	



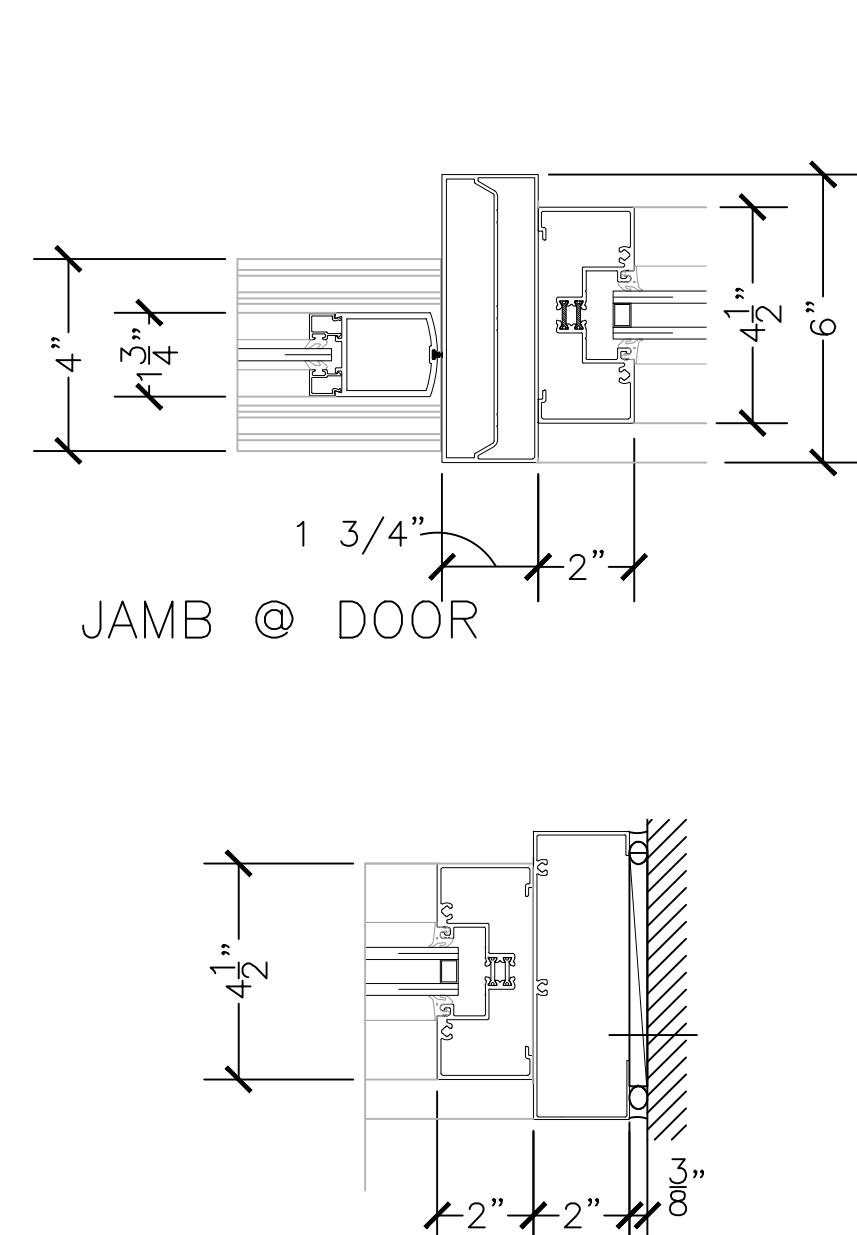
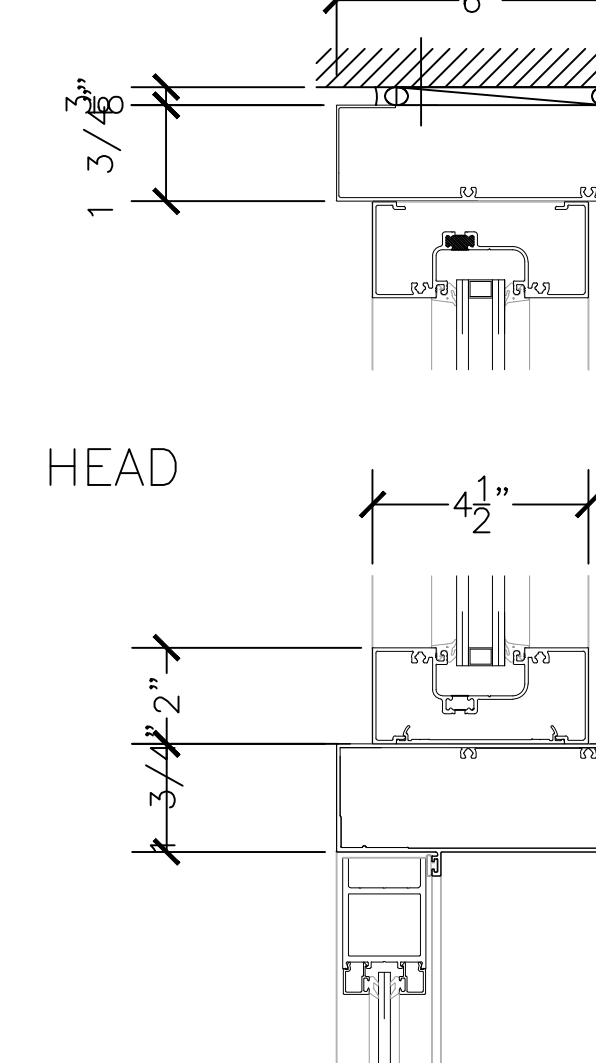
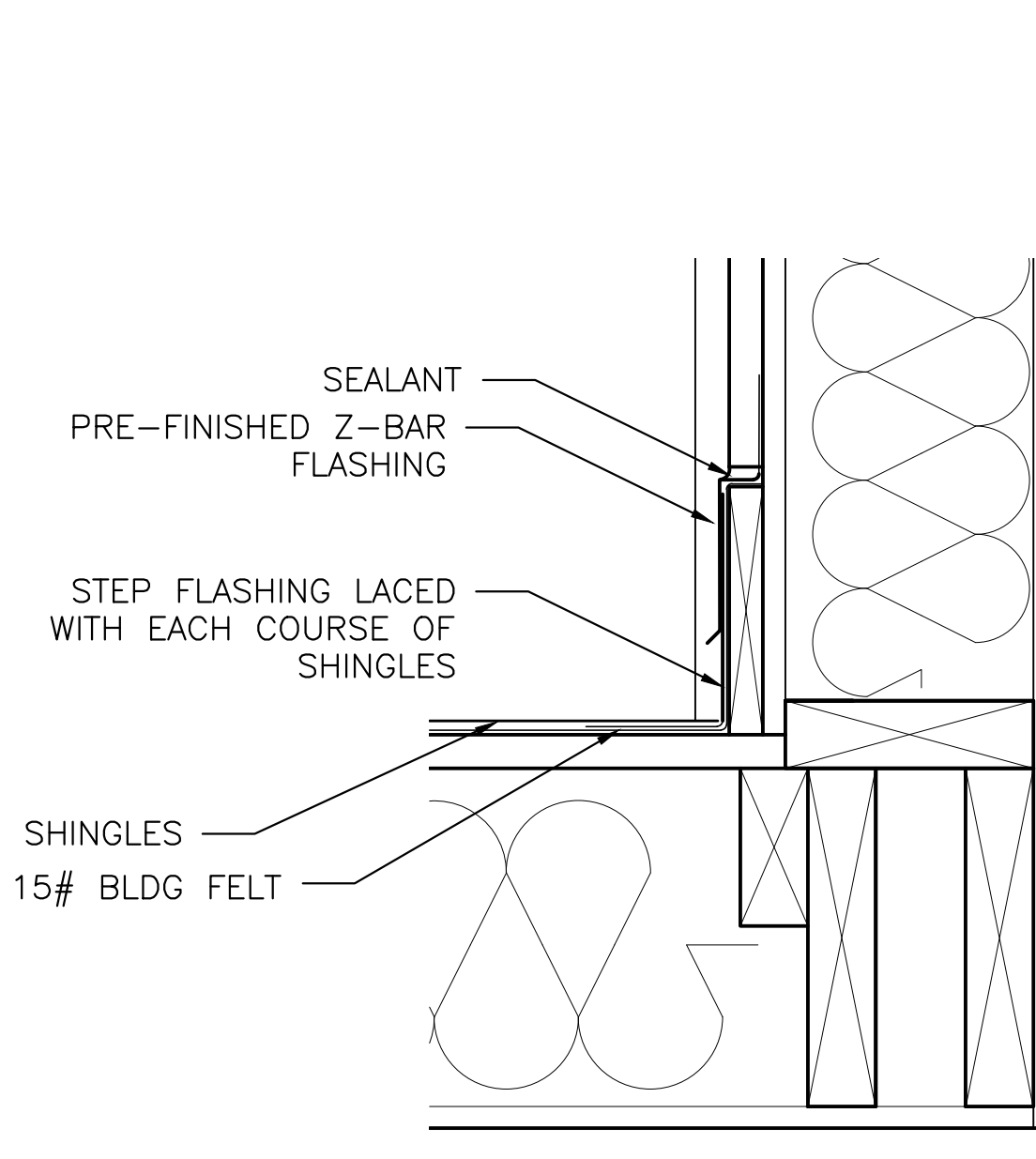
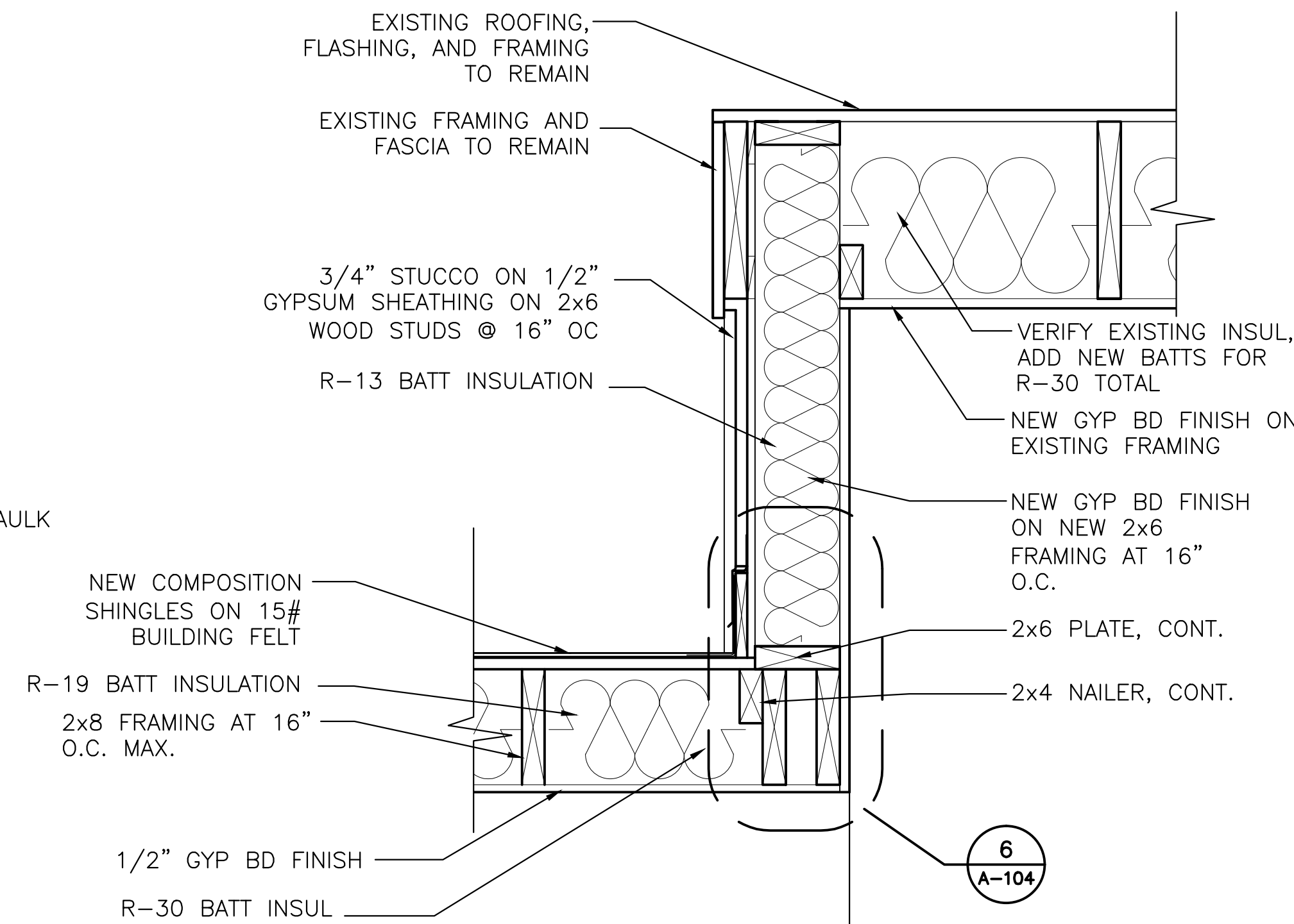
4	INTERIOR ELEVATION	5	INTERIOR ELEVATION	6	INTERIOR ELEVATION
A-103	SCALE 3/16" = 1'-0"	A-103	SCALE 3/16" = 1'-0"	A-103	SCALE 3/16" = 1'-0"



1	PLAN DETAIL	2	ENLARGED ENTRY PLAN	3	NEW ENTRY ELEVATION	BID PACKAGE	
A-103	SCALE 1" = 1'-0"	A-103	SCALE 1/2" = 1'-0"	A-103	SCALE 1/2" = 1'-0"		
PRIME: amec AMEC Environment & Infrastructure, INC. 3200 TOWN POINT DR. KENNESAW, GA. 30144 AMEC PROJECT: 6151-12-0118		SURVEYOR: OTHER:		NATIONAL CEMETERY ADMINISTRATION		Drawing Title ENLARGED PLANS & DETAILS Approved: Director, Technical Support Service Approved: Chief, Architectual & Engineering Division	
				Project Title ADMINISTRATION BUILDING MODIFICATIONS CULPEPER NATIONAL CEMETERY		Date April 11, 2014 Project No. 839-NRM14-0002 DRAWING NO. A-103 Dwg. 4 OF 7	
				Building Number XX Location CULPEPER, VIRGINIA		Checked JCA Drawn LKB	



NOTE: FINISH FOR NEW METAL SOFFIT AND FASCIA WRAP TO MATCH PETERSON ALUMINUM PAC-CLAD "MUSKET GRAY"



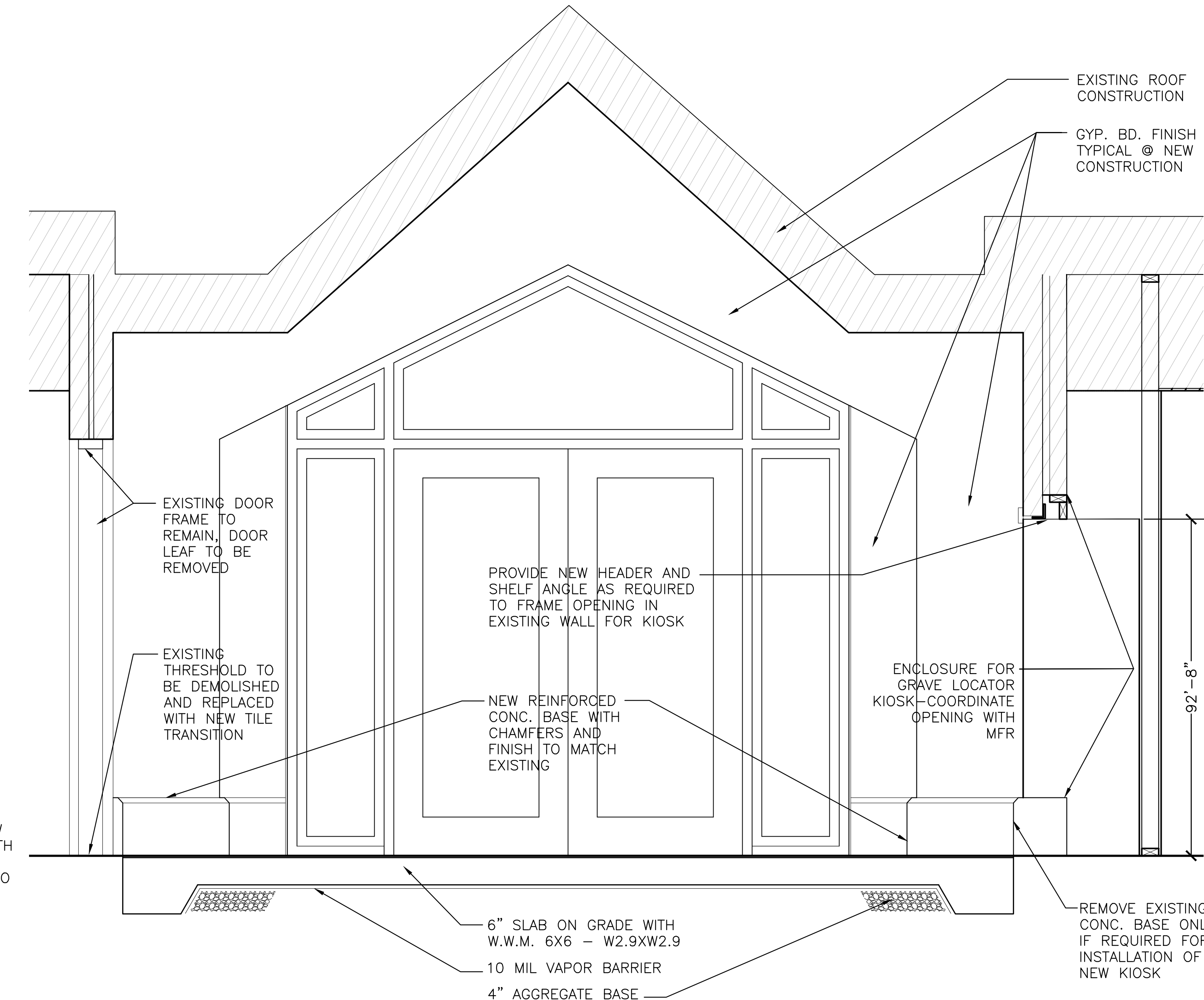
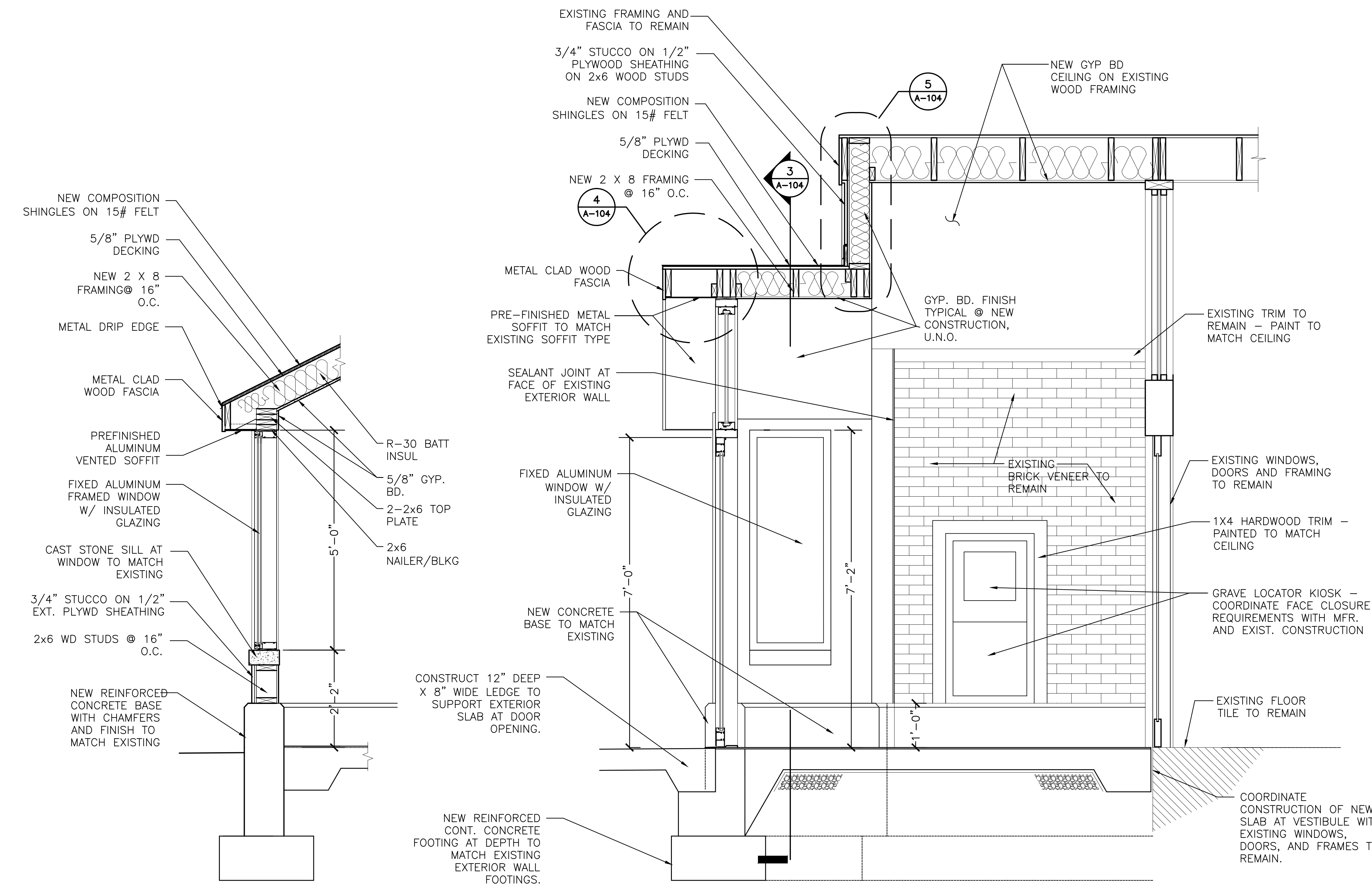
NOTE: FINISH FOR NEW WINDOWS AND STOREFRONT TO MATCH PETERSON ALUMINUM PAC-CLAD "SLATE GRAY"

7 STOREFRONT AND ENTRANCE DETAILS
A-104 SCALE 3" = 1'-0"

4 SECTION THRU VESTIBULE
A-104 SCALE 3" = 1'-0"

5 STUB-WALL DETAIL
A-104 SCALE 1 1/2" = 1'-0"

6 STEP FLASHING DETAIL
A-104 SCALE 1 1/2" = 1'-0"



1 SECTION THRU VESTIBULE
A-104 SCALE 3/4" = 1'-0"

2 SECTION THRU VESTIBULE
A-104 SCALE 3/4" = 1'-0"

3 SECTION THRU VESTIBULE
A-104 SCALE 3/4" = 1'-0"

BID PACKAGE



AMEC Environment & Infrastructure, INC.
3200 TOWN POINT DR.
KENNESAW, GA. 30144

AMEC PROJECT: 6151-12-0118



NATIONAL
CEMETERY
ADMINISTRATION

SECTIONS AND DETAILS

Approved: Director, Technical Support Service

Approved: Chief, Architectural & Engineering Division

Project Title
ADMINISTRATION BUILDING
MODIFICATIONS
CULPEPER NATIONAL CEMETERY

Building Number
XX

Checked
JCA

Drawn
LKB

Location
CULPEPER, VIRGINIA

Date
April 11, 2014

Project No.
839-NRM14-0002

DRAWING NO.
A-104

Dwg. 5 OF 7

AIR HANDLER & CONDENSING UNIT SCHEDULE																	
AIR HANDLER (INDOOR)												CONDENSING UNIT (OUTDOOR)					
MARK	BASIS OF DESIGN	MODEL	TONS	SUPPLY AIR (CFM)	COOLING CONDITIONS				ELECTRICAL				MARK	BASIS OF DESIGN	MODEL	ELECTRICAL	NOTES
	MANUFACTURER				AHRI RATED COOLING CAPACITY (MBH)	SENSIBLE CAPACITY (MBH)	SEER	EER	FAN (AMPS)	FAN E.S.P. (IN WG)	VOLT/PH	AUX. ELECTRIC HEATING COIL (kW)		MANUFACTURER		VOLT/PH	
AHU-1	ARMSTRONG AIR	BCS2M36V05NA1P	2	700	24	18	18	13	2.5	0.50	240/1	5	CU-1	ARMSTRONG AIR	4SCU18LT124P	240/1	①②③④⑤
① CONTRACTOR TO PROVIDE CONDENSATE PUMP IF REQUIRED																	
② CONTRACTOR TO PROVIDE LONG-LINE SET IF REQUIRED																	
③ CONTRACTOR TO PROVIDE TRANSFORMER IF REQUIRED																	
④ INDOOR EXPANSION VALVE: A4TXV01																	
⑤ INTERLOCK AHU-1 AND CU-1 TO OPERATE PER MANUFACTURER'S INSTRUCTIONS.																	

AIR DISTRIBUTION SCHEDULE							
MARK	BASIS OF DESIGN	MODEL	FLOW (CFM)	NECK (IN)	FACE (IN)	BORDER	FINISH
S-1	PRICE	520D	615	12x12	HORIZONTAL FRONT BLADES	F	WHITE POWDER COAT
S-2	PRICE	SMD	350	12x9	1B	TYPE 1 SURFACE MOUNT	WHITE POWDER COAT
S-3	PRICE	SCDA	350	10 DIA.	24x24 ADJUSTABLE SQUARE CONE	LAY-IN	WHITE POWDER COAT
R-1	PRICE	530	---	18x12	-----	F	WHITE POWDER COAT
R-2	PRICE	530	---	12x12	-----	F	WHITE POWDER COAT

NOTE 1:
PROVIDE INSULATED (2-INCH THICK FIBERGLASS BATT WITH FSK JACKET) GALVANIZED SHEETMETAL DUCTWORK. SUPPORT ACCORDING TO SMACNA STANDARDS. PRESSURE CLASS: 1-INCH

NOTE 2:
PROVIDE DOUBLE-WALLED, INSULATED FLEXIBLE DUCTWORK. SUPPORT ACCORDING TO SMACNA STANDARDS. PRESSURE CLASS: 1-INCH

NOTE 3:
PROVIDE PROGRAMMABLE THERMOSTAT PER MANUFACTURER'S RECOMMENDATIONS. SUITABLE FOR INSTALLED EQUIPMENT. MINIMUM FEATURES TO INCLUDE NIGHT SETBACK AND HOLIDAY SCHEDULE.

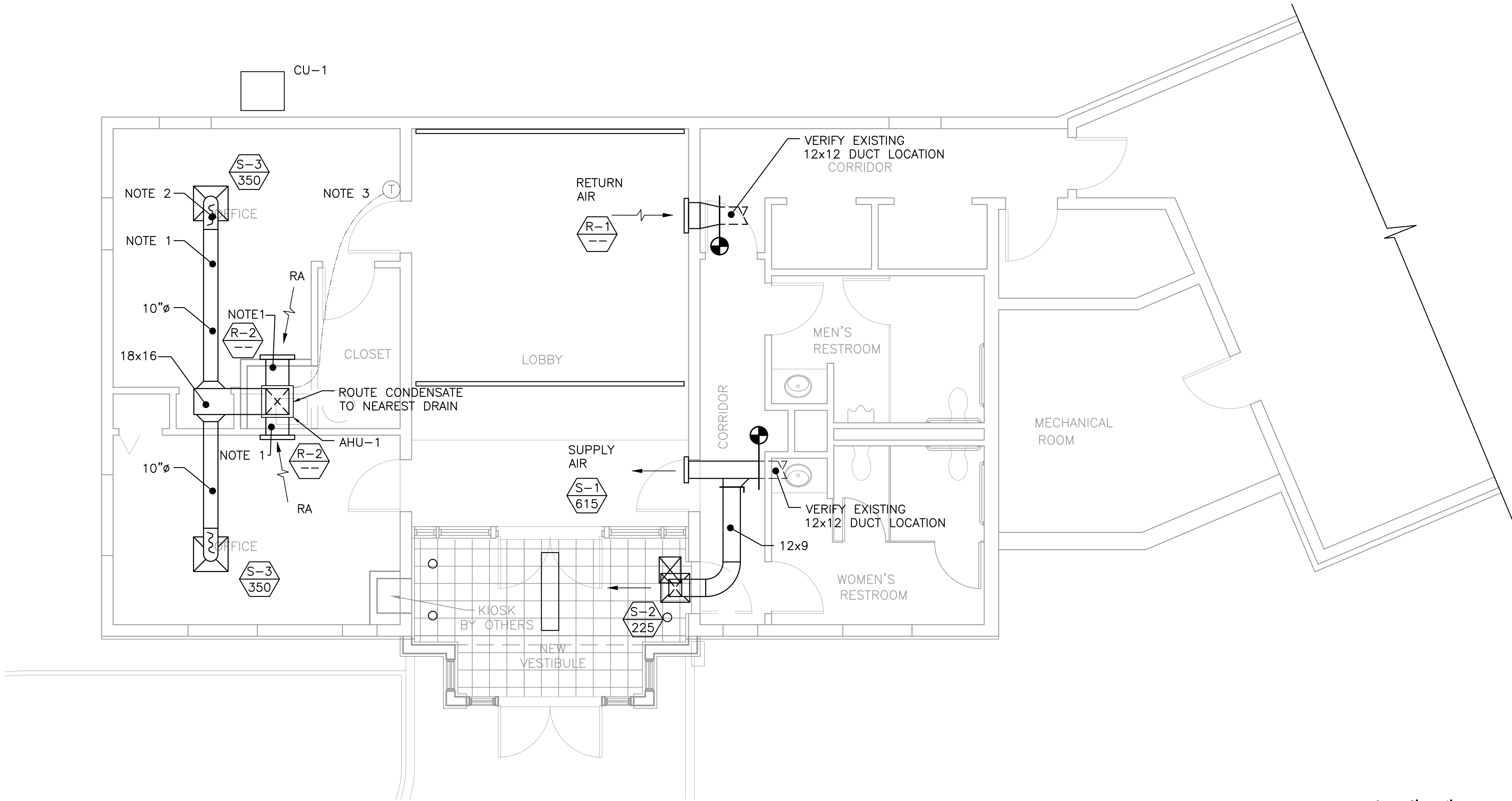
SYMBOLS

TARGET INDICATES NEW DUCT CONNECTION TO EXISTING DUCTWORK

MARK (SEE AIR DISTRIBUTION SCHEDULE)

CFM

THERMOSTAT



0 2' 4' 8'
SCALE: 1/4" = 1'

MAINTENANCE

ADMINISTRATION

KEY PLAN

1

SCHEMATIC HVAC FLOOR PLAN

M-101

SCALE 1/4" = 1'-0"

PRIME:

AMEC Environment & Infrastructure, INC.
3200 TOWN POINT DR.
KENNESAW, GA. 30144

SURVEYOR:

OTHER:

NATIONAL CEMETERY ADMINISTRATION

Drawing Title

HVAC PLAN

Project Title

ADMINISTRATION BUILDING MODIFICATIONS
CULPEPER NATIONAL CEMETERY

Approved: Director, Technical Support Service

Building Number XX

Checked DPA

Drawn MJL

Approved: Chief, Architectual & Engineering Division

Location CULPEPER, VIRGINIA

Date

April 11, 2014

Project No.

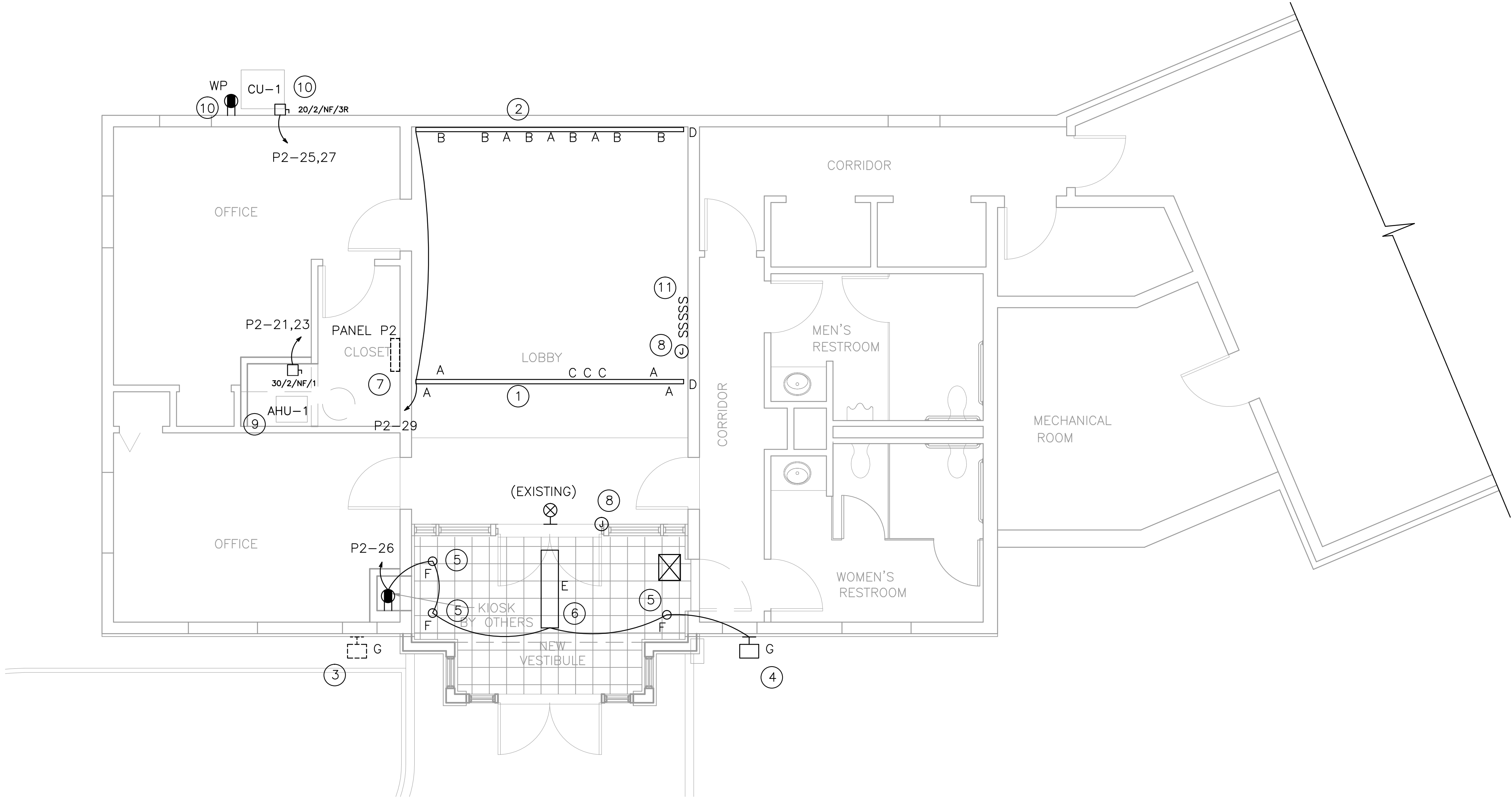
839-NRM14-0002

DRAWING NO.

M-101

Dwg. 6

OF 7



1 ELECTRICAL FLOOR PLAN
E-101 SCALE 1/4" = 1'-0"

PANELBOARD	PANEL P2	V	W	DATE
FED FROM PANEL				
CKT	LOAD DESCRIPTION	CKT	LOAD DESCRIPTION	
1	120V RM 104 SPLIT LVS WEST (104) 8 REC. RM GFI ABOVE SINK	2	120V RM 104 SPLIT LVS WEST (104) 8 REC. RM GFI ABOVE SINK	
3	RECS RM 104 GFI ENTRANCE	4	SPARE	
5	SPARE	6	MICROWAVE	
7	RM 100 LIGHTS AND RECS (100) 8 REC. NORTH WALL RM 100	8	RECS NORTH WALL RM 100	
9	KITCH COIL RM 101	10	REC EAST WALL RM 100	
11	COVE LVS RM 100	12	REC EAST WALL RM 100	
13	KITCH AND ELECTRIC RM LVS	14	FLOOR FLOD RM 104	
15	RECS COUNTER LVS UNDER CABINETS	16	SPARE	
17	SPARE	18	SPARE	
19	SPARE	20	SPARE	
21	SPARE	22	SPARE	
23	SPARE	24	SPARE	
25	SPARE	26	SPARE	
27	KITCHEN REFRIGERATOR	28	WATER READER	
29	AND STOVE UNIT	30	KITCHEN	
31		32		
33		34		
35		36		
37		38		
39		40		
41		42		



2 EXISTING ELECTRICAL PANEL P2
E-101 SCALE 1/4" = 1'-0"

LEGEND

- NEW 9.5"Wx48"L LIGHT FIXTURE, TYPE INDICATED
- NEW TRACK LIGHT FIXTURE, TYPE INDICATED
- NEW EXTERIOR WALL MOUNTED DUAL FLOOD LIGHT FIXTURE.
- EXISTING EXTERIOR WALL MOUNTED DUAL FLOOD LIGHT FIXTURE.
- EXISTING EXIT LIGHT TO REMAIN
- NEW GFCI DUPLEX RECEPTACLE
- NEW JUNCTION BOX
- LONG CROSSMARK INDICATES PHASE, SHORT CROSSMARK INDICATES NEUTRAL, GROUND NOT SHOWN
- NEW HOME RUN (ONE ARROW PER CIRCUIT)
- EXISTING SINGLE POLE LIGHT SWITCH TO REMIAN
- NEW THREE WAY TOGGLE LIGHT SWITCH
- EXISTING PANEL TO REMAIN
- NON FUSED DISCONNECT SWITCH, SIZE/POLES/FUSE/ENCLOSURE (NEMA) TYPE, MOUNTING HEIGHT = 36" ABOVE FINISH FLOOR

LIGHTING FIXTURE SCHEDULE

TYPE	LAMPS	VOLT	FIXTURE DESCRIPTION	MOUNTING
A	75W PAR-30	120	ROUND BACK CYLINDER, 4.5" DIAMETER, WHITE, PRESCOLITE AKTRCP30	TRACK MOUNTED
B	50W PAR-20	120	LINE FORM STYLE, WHITE, PRESCOLITE AKTLF20	TRACK MOUNTED
C	60W PAR-16	120	ROUND BACK CYLINDER, 2.75" DIAMETER, WHITE, PRESCOLITE AKTRCP16	TRACK MOUNTED
D	--	120	TWO CIRCUIT TRACK, WHITE, 12' LENGTH, PRESCOLITE AKT12	CEILING/WALL FLUSH
E	1-F28T5 (LAMPS & BALLAST: 65W)	120	SINGLE ROW 4' LONG FLUORESCENT INDIRECT LUMINAIRE, 9.5"WIDTH, DIE CAST ALUMINUM WITH AIRCRAFT CABLE SUSPENSION. MODEL# ALERA CV-4-1T5-S-CM-48-EP-U-MW-HRF	PENDANT MOUNTED.
F	LP32T35K	120	6" VERTICAL TRIPLE TUBE LENSED DOWNLIGHT PRESCOLITE LF6CFV-32-EB	CEILING RECESSED
G	2X 150W MAX EACH	120	TWIN PAR HOLDER, DUSK TO DAWN LITHONIA LIGHTING OFTH300PR-120-P-BZ	WALL FLUSH

ABBREVIATIONS:

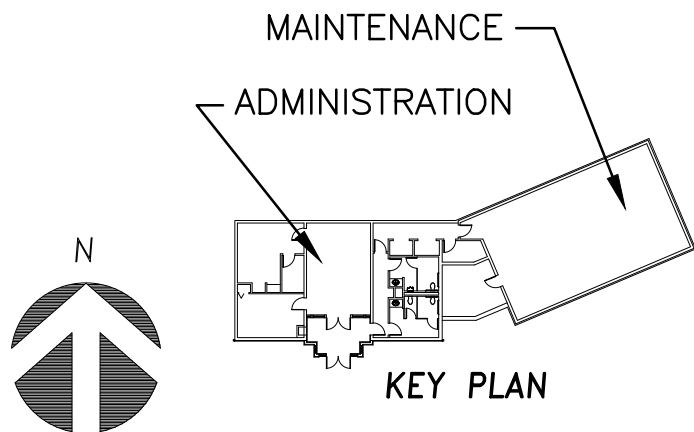
- 3W THREE WIRE
- 4W FOUR WIRE
- A/E ARCHITECT/ENGINEER
- AC ALTERNATING CURRENT
- AF AMP FRAME
- AFF ABOVE FINISHED FLOOR
- AIC AMPERE INTERRUPTING CAPACITY
- A AMPERE
- BLDG BUILDING
- BKR BREAKER
- C CONDUIT
- CKT CIRCUIT
- CU COPPER
- DEMO DEMOLITION
- DWG DRAWINGS
- E EMERGENCY
- FLA FULL LOAD AMPS
- FT FEET
- GND GROUND
- HP HORSEPOWER
- HT HEIGHT
- HZ HERTZ
- J JUNCTION BOX
- KW KILOWATT
- NEC NATIONAL ELECTRICAL CODE
- NEMA NATIONAL ELECTRICAL MANUFACTURERS ASSOCIATION
- N NEUTRAL
- NFPA NATIONAL FIRE PROTECTION ASSOCIATION
- NTS NOT TO SCALE
- P POLE
- PH PHASE
- RGS RIGID GALVANIZED STEEL
- RM ROOM
- SPEC SPECIFICATION
- SW SWITCH
- TYP TYPICAL
- UL UNDERWRITERS LABORATORY
- V VOLT
- W WATTS
- WP WEATHER PROOF

KEY NOTES:

- NEW CEILING MOUNTED TRACK TYPE "D". INSTALL LIGHT FIXTURES AS INDICATED. SEE LIGHTING FIXTURE SCHEDULE ON THIS SHEET.
- NEW WALL MOUNTED TRACK TYPE "D". INSTALL LIGHT FIXTURES AS INDICATED. SEE LIGHTING FIXTURE SCHEDULE ON THIS SHEET.
- REPLACE EXISTING EXTERIOR WALL MOUNTED DUAL FLOOD LIGHT FIXTURE WITH NEW TYPE "G" FIXTURE. RECONNECT TO EXISTING CIRCUIT. SEE LIGHTING FIXTURE SCHEDULE ON THIS SHEET.
- NEW EXTERIOR WALL MOUNTED DUAL FLOOD LIGHT FIXTURE TYPE "G". NEW FIXTURE TO MATCH EXISTING FIXTURE IN COLOR AND MATERIAL. SEE LIGHTING FIXTURE SCHEDULE ON THIS SHEET.
- NEW CEILING MOUNTED RECESSED CAN LIGHT FIXTURE TYPE "F". SEE LIGHTING FIXTURE SCHEDULE ON THIS SHEET.
- NEW CABLE HUNG FLUORESCENT LIGHT FIXTURE TYPE "E". SEE LIGHTING FIXTURE SCHEDULE ON THIS SHEET.
- VERIFY LOCATION OF EXISTING PANEL "P2". VERIFY THAT AVAILABLE SPACE EXISTS IN PANEL P2. IF THE CIRCUIT IS AVAILABLE, PROVIDE NEW CIRCUIT BREAKERS AS INDICATED. VOLTAGE DROP SHOULD NOT BE MORE THAN 3%.
- PROVIDE NEW SECURITY MAGNETIC DOOR LATCH WITH PUSH BUTTON RELEASE. COORDINATE LOCATION OF RELEASE BUTTON WITH OWNER. INSTALL ACCESS CARD READER ADJACENT TO DOOR IN VESTIBULE AND AN EXIT PUSH BUTTON ADJACENT TO DOOR IN LOBBY. COORDINATE EXACT LOCATION WITH OWNER.
- PROVIDE NEW 240V DISCONNECT (MIN 30A) FOR AHU-1. CONNECT CIRCUIT BACK TO EXISTING PANEL P2 AND PROVIDE NEW 30A DOUBLE POLE HACR TYPE CIRCUIT BREAKER.
- PROVIDE NEW 240V OUTDOOR RATED DISCONNECT (MIN 20A) FOR CU-1. CONNECT CIRCUIT BACK TO EXISTING PANEL P2 AND PROVIDE NEW 20A DOUBLE POLE HACR TYPE CIRCUIT BREAKER. ADD NEW GFCI RECEPTACLE IN WEATHER PROOF ENCLOSURE AND CONNECT TO NEAREST 120V CIRCUIT.
- COORDINATE LOCATION AND CIRCUITING OF NEW LOBBY AND VESTIBULE LIGHT SWITCHES WITH OWNER. PROVIDE A SEPARATE SWITCH FOR EACH TYPE OF FIXTURE "A", "B", "C", "E", AND "F".

GENERAL NOTES:

- COORDINATE LOCATIONS OF NEW LIGHTING FIXTURES WITH ARCHITECTURAL DRAWINGS.
- ALL EXPOSED INTERIOR CONDUITS SHALL BE EMT.
- CONTRACTOR SHALL USE CONDUCTOR INSULATION TYPE "THWN" FOR ALL BRANCH CIRCUITS.
- ALL ELECTRICAL WORK SHALL BE IN ACCORDANCE WITH THE LATEST APPROVED NEC EDITION, AND LOCAL CODES AND REGULATIONS.
- A GREEN EQUIPMENT GROUNDING CONDUCTOR INSULATED OR BARE WIRE SHALL BE INCLUDED IN EACH CABLE OR CONDUIT AND ATTACHED TO THE FRAME OF ENCLOSURE.
- MINIMUM TRADE CONDUIT SIZE SHALL BE 3/4". CONDUITS CONTAINING MORE THAN THREE CURRENT CARRYING CONDUCTORS SHALL BE ADJUSTED ACCORDING TO NEC CODE (TABLE 310.15(B)(2)(a)).
- ANY NEW CIRCUIT BREAKER TO BE INSTALLED IN AN EXISTING PANEL SHALL HAVE AIC RATING NOT LESS THAN THE WITHSTANDING RATING OF THE EXISTING PANEL.
- FIELD VERIFY ALL EXISTING INFORMATION SHOWN ON THIS SHEET PRIOR TO COMMENCING WORK.
- ALL MATERIAL FURNISHED BY THE CONTRACTOR SHALL BE NEW AND UL LISTED. MATERIALS SHALL BE SUBJECT TO TEST, INSPECTION AND APPROVAL BY THE OWNER OR THE ENGINEERS.
- UPDATE EXISTING DIRECTORIES FOR EXISTING PANELBOARDS WHERE NEW CIRCUITS ARE ADDED.



BID PACKAGE

Revisions	Date	PRIME:	SURVEYOR:	OTHER:		NATIONAL CEMETERY ADMINISTRATION	Drawing Title	Project Title	Date		
							ELECTRICAL PLAN	ADMINISTRATION BUILDING MODIFICATIONS CULPEPER NATIONAL CEMETERY	April 11, 2014		
							Approved: Director, Technical Support Service	Building Number	Checked	Drawn	Project No.
							XX	GP	TO	839-NRM14-0002	
						Approved: Chief, Architectual & Engineering Division	Location	Drawing No.			
							CULPEPER, VIRGINIA	E-101			
									Dwg. 7 OF 7		