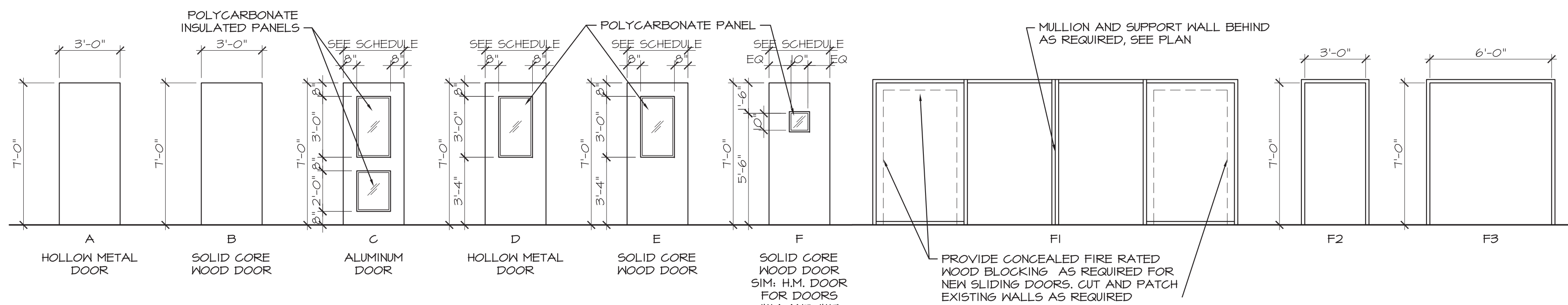


DOOR SCHEDULE

LOCATION		DOOR						FRAME					REMARKS
NO.	ROOM	WIDTH	HEIGHT	THK	TYPE	MATERIAL	FINISH	TYPE	MATERIAL	FINISH	HDWR	FIRE RATING	
101A	EXTERIOR	EXIST	EXIST	EXIST	EXIST	ALUM	BR ANOD	EXIST	EXIST	BR ANOD	EXIST	-	SEE DOOR SCHEDULE NOTE #1 SEE DOOR SCHEDULE NOTE #1
101B	EXTERIOR	EXIST	EXIST	EXIST	EXIST	ALUM	BR ANOD	EXIST	EXIST	BR ANOD	EXIST	-	
102A	LOBBY 102	4'-0"	T'-0"	1-3/4"	C	ALUM	BR ANOD	FI	ALUM	BR ANOD			
102B	LOBBY 102	4'-0"	T'-0"	1-3/4"	C	ALUM	BR ANOD	FI	ALUM	BR ANOD			
103	NEW MECH RM 103	3'-0"	T'-0"	1-3/4"	A	H.M.	P-2	F2	HM	P-2			LEVEL 3 BALLISTIC UL RATING 90 MIN
104	ENTRY 104	3'-8"	T'-0"	1-3/4"	A	H.M.	P-2					45 MIN	
105	STORAGE 105	3'-0"	T'-0"	1-3/4"	A	H.M.	P-2						
106	RECEPTION 106	3'-0"	T'-0"	1-3/4"	D	H.M.	P-2						
107	OPERATIONS 107	3'-0"	T'-0"	1-3/4"	E	WD	MFR						
109A	BADGE PHOTOS/INTERVIEW 109	3'-0"	T'-0"	1-3/4"	F	WD	MFR					45 MIN	LEVEL 3 BALLISTIC UL RATING; 1-WAY FILM ON GLAZING (OFFICE PRIVATE SIDE)
109B	BADGE PHOTOS/INTERVIEW 109	3'-8"	T'-0"	1-3/4"	A	H.M.	P-2					45 MIN	LEVEL 3 BALLISTIC UL RATING
110A	HALLWAY/ WORK AREA 110	3'-0"	T'-0"	1-3/4"	A	WD	MFR						LEVEL 3 BALLISTIC UL RATING 45 MIN
110B	HALLWAY/ WORK AREA 110	3'-0"	T'-0"	1-3/4"	B	WD	MFR						
110C	HALLWAY/ WORK AREA 110	3'-8"	T'-0"	1-3/4"	A	H.M.	P-2						
111	DEPUTY CHIEF 111	3'-0"	T'-0"	1-3/4"	B	WD	MFR						
112	CHIEF 112	3'-0"	T'-0"	1-3/4"	B	WD	MFR						
114	HOLDING 114	3'-8"	T'-0"	1-3/4"	F 51M	H.M.	P-2						SEE DOOR SCHEDULE NOTE #3; 1-WAY FILM ON GLAZING (CORRIDOR PRIVATE SIDE)
115	EVIDENCE 115	3'-0"	T'-0"	1-3/4"	A	H.M.	P-2						SEE DOOR SCHEDULE NOTE #3; 1-WAY FILM ON GLAZING (ARMORY PRIVATE SIDE)
117	ARMORY 117	3'-0"	T'-0"	1-3/4"	F 51M	H.M.	P-2						
118	UNISEX TOILET 118	3'-0"	T'-0"	1-3/4"	B	WD	MFR						
119	MEN'S LOCKER RM 119	3'-0"	T'-0"	1-3/4"	B	WD	MFR						
120	WOMEN'S LOCKER RM 120	3'-0"	T'-0"	1-3/4"	B	WD	MFR						
121A	NEW MECH RM 121	(2) 2'-6"	T'-0"	1-3/4"	A	H.M.	P-2	F3					LEVEL 3 BALLISTIC UL RATING
121B	NEW MECH RM 121	2'-6"	T'-0"	1-3/4"	A	H.M.	P-2	F2					

DOOR SCHEDULE LEGEND:

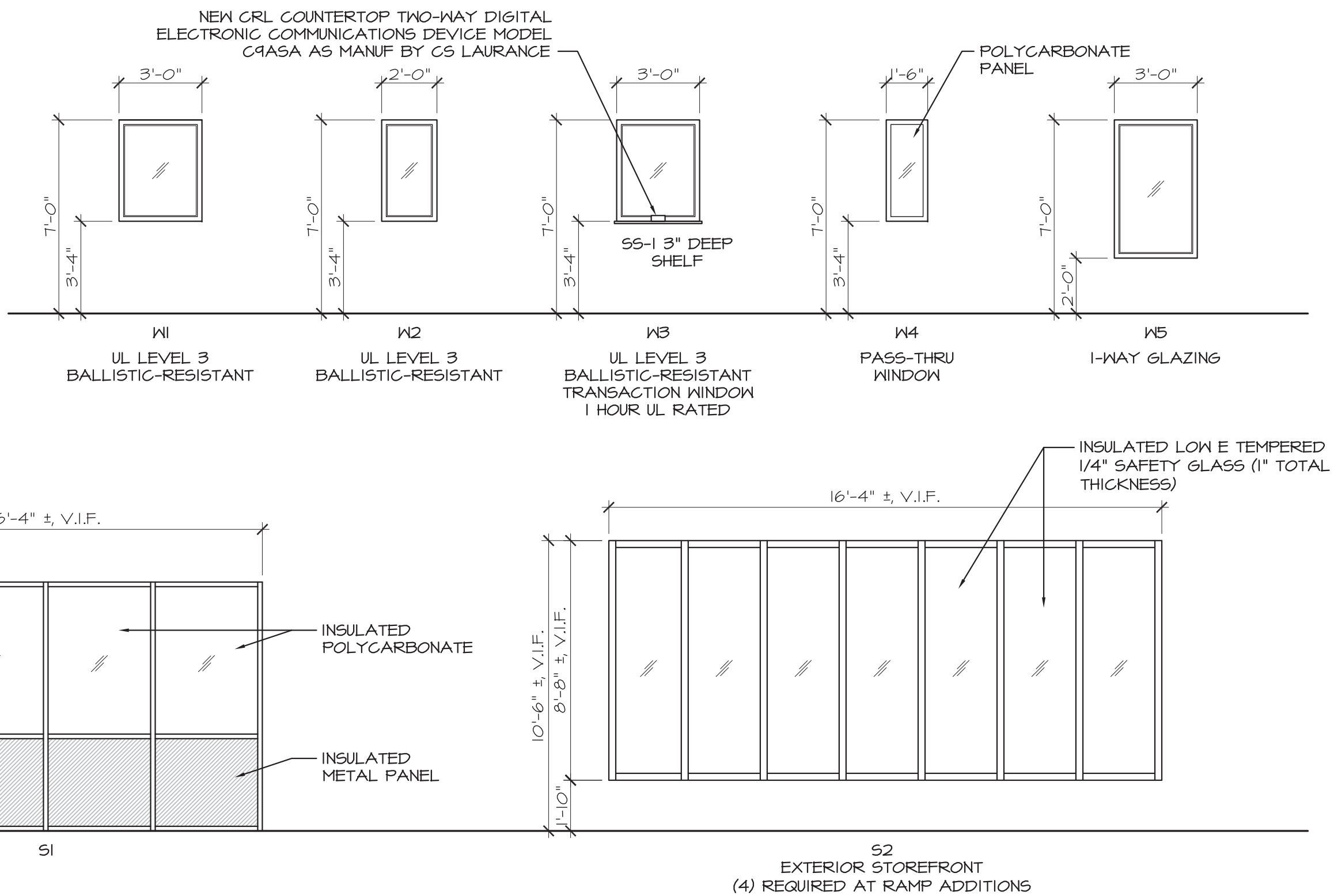
ALUM H.M.	ALUMINUM HOLLOW METAL	GL WD	GLASS WOOD
--------------	--------------------------	----------	---------------



TYPE	ROUGH OPEN	DESCRIPTION	HEAD HT	FRAME MAT'L	FINISH	GLAZING	MANUFACTURER	MODEL	REMARKS
W1	3'-0" X 3'-8"	FIXED	7'-0" AFF	S.S. AND ALUM	MFR	SEE NOTE #2	CR LAURANCE		UL LEVEL 3 BALLISTIC-RESISTANT, I-HR RATED
W2	2'-0" X 3'-8"	FIXED	7'-0" AFF	S.S. AND ALUM	MFR	SEE NOTE #2	CR LAURANCE		UL LEVEL 3 BALLISTIC-RESISTANT, I-HR RATED
W3	3'-0" X 3'-8"	FIXED	7'-0" AFF	S.S. AND ALUM	MFR	SEE NOTE #1	CR LAURANCE		UL LEVEL 3 BALLISTIC-RESISTANT, I-HR RATED
W4	1'-6" X 3'-8"	FIXED	7'-0" AFF	H.M.	P-2	SEE NOTE #3	CR LAURANCE		UL LEVEL 3 BALLISTIC-RESISTANT
W5	3'-0" X 5'-0"	FIXED	7'-0" AFF	H.M.	P-2	1-WAY MIRROR	CS LAURANCE		UL LEVEL 3 BALLISTIC-RESISTANT, 1-WAY GLAZING, MIRROR OPPOSITE SIDE

WINDOW SCHEDULE NOTES

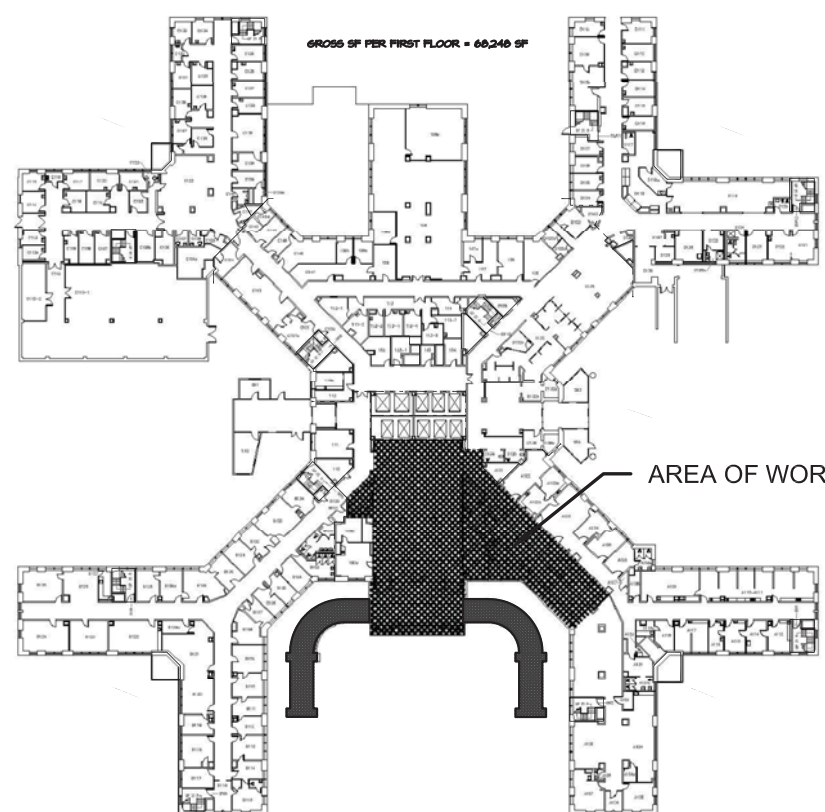
1. WINDOW TO BE INTERIOR TRANSACTION WINDOW WITH UL LEVEL 3 BALLISTIC RESISTANT RATING AND 1-HR FIRE RATING TO HAVE ELECTRONIC COMMUNICATION SYSTEM (NO PENETRATION ALLOWED).
2. WINDOW TO BE UL LEVEL 3 BALLISTIC RESISTANT RATED AND 1-HR FIRE RATED, AND TINTED (ONE MAY VISION) GLAZING.
3. WINDOW TO BE A UL LEVEL 3 BALLISTIC RESISTANT RATED.



Keynotes

Key Value	Keynote Text
-----------	--------------

KEY PLAN



CONSULTANTS:

[illegible]

ARCHITECT/ENGINEERS:

FELLENZER III
ENGINEERING LLP

**22 Mulberry St., Suite 2A, 181 Church St., Suite 100,
Middletown, NY 10940 Poughkeepsie, NY 12601
t 845-343-1481 fx 845-320-8735 t 845-454-9704 fx 855-320-873535**

UNAUTHORIZED ALTERATION OR ADDITION TO A PLAN BEARING A
LICENSED PROFESSIONAL ENGINEER'S SEAL IS A VIOLATION OF
STATE EDUCATION LAW



Liscum
McCormack
VanVoorhis LLP

ARCHITECTURE
PLANNING INTERIORS

Drawing Title
DOOR SCHEDULE & TYPES AND
WINDOW SCHEDULE & TYPES

Approved: Project Director

Project Title
**RENOVATE LOBBY & POLICE
SUITE AT STRATTON VA
MEDICAL CENTER**

Location	V.A.M.C. ALBANY, NY
----------	---------------------

Date 4/4/14

Checked
RV

Drawn
AR/AW

Project Number

Building Number

Drawing Number

1-AS-501

Dwg. 22 of 40

Office of
Construction
and Facilities
Management

