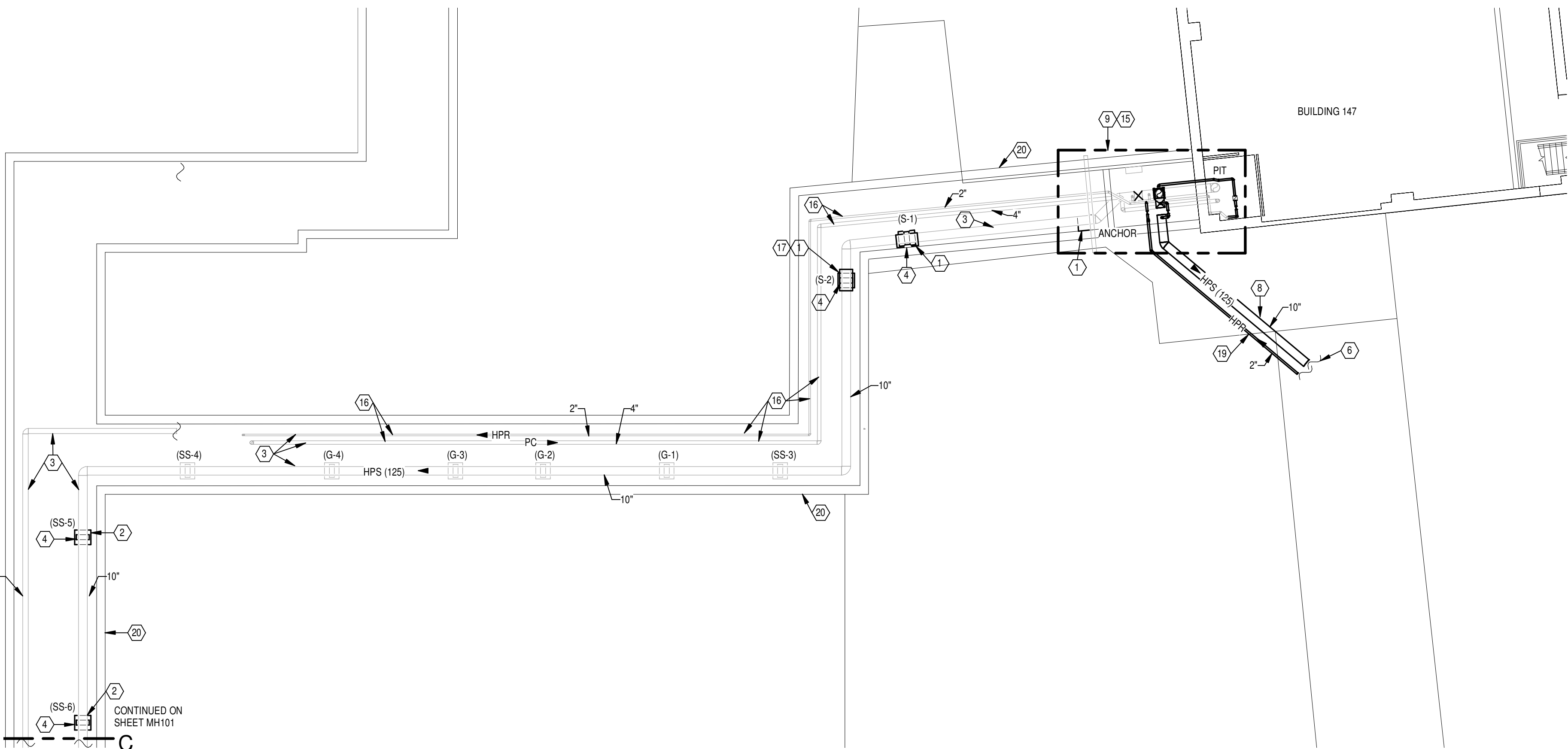
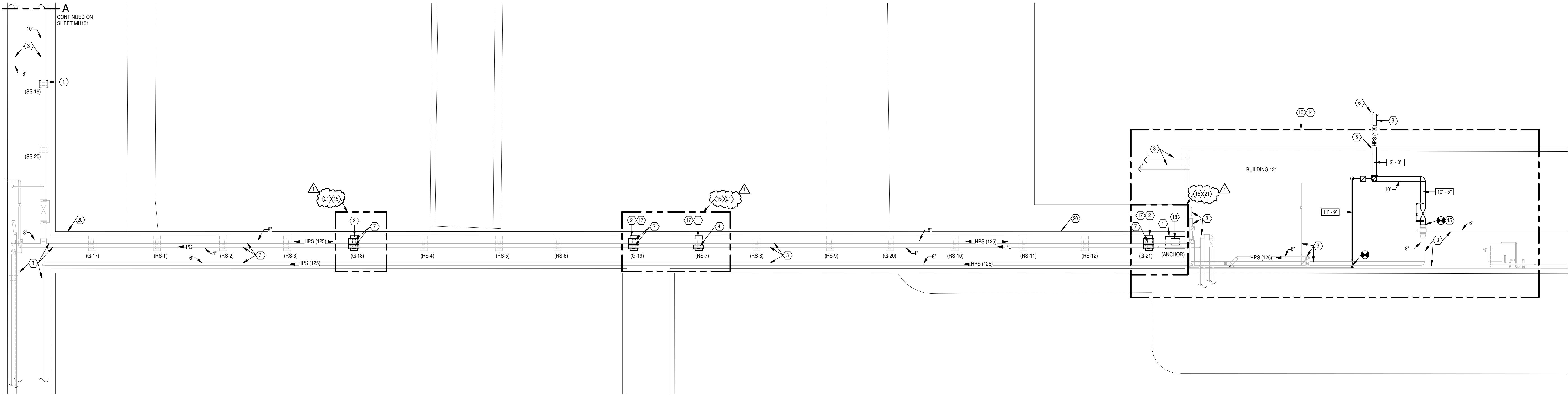


three inches = one foot  
one and one-half inches = one foot  
one inch = one foot  
three-quarters inch = one foot  
one-half inch = one foot  
three-eighths inch = one foot  
one-quarter inch = one foot  
one-eighth inch = one foot



ENLARGED TUNNEL PARTIAL PLAN  
SCALE: 1/2" = 1'-0"



TUNNEL PLAN - NEW WORK  
SCALE: 1/8" = 1'-0"

### GENERAL NOTES

- A REFER TO SHEET M001 FOR LEGEND, ABBREVIATIONS AND ADDITIONAL GENERAL NOTES.
- B PRIOR TO THE START OF REPAIR WORK CONTRACTOR SHALL PERFORM A VISUAL AND SOUND SURVEY OF ALL CONCRETE SUPPORT BLOCKS PER SPECIFICATION SECTION 03 01 00.
- C REFER TO SHEET M001 FOR TYPICAL PIER WORK.
- D PROVIDE NEW PRESSURE GAUGES AROUND ALL NEW VALVES AS SPECIFIED.

### NOTES

- 1 KNOWN LOCATION OF CONCRETE PIER REQUIRING SURFACE REPAIR NEEDS. REFER TO DETAIL ON SHEET M001 AND SPECIFICATION SECTION 03 01 00.
- 2 KNOWN LOCATION OF CONCRETE PIER REQUIRING REPLACEMENT. REFER TO DETAIL ON SHEET M001 AND SPECIFICATION SECTION 03 01 00.
- 3 EXISTING PIPING TO REMAIN.
- 4 PROVIDE ONE GUIDE/SUPPORT AT THIS LOCATION. RE-INSULATE PIPING WHERE INSULATION REMOVED FOR GUIDE/SUPPORT WORK.
- 5 SEAL PIPE PENETRATION THROUGH WALLS BELOW GRADE PER PIPING SYSTEM MANUFACTURER'S RECOMMENDATIONS. COORDINATE EXACT WALL OPENING SIZE AND LOCATION REQUIRED.
- 6 REFER TO SHEET C130 FOR PIPING LOCATIONS, AND ADDITIONAL INFORMATION.
- 7 PROVIDE GUIDES/SUPPORTS FOR BOTH PIPES (10" AND 4") AT THIS LOCATION. RE-INSULATE PIPING WHERE INSULATION REMOVED FOR GUIDE/SUPPORT WORK.
- 8 PROVIDE NEW DIRECT BURIED, PREFABRICATED, 8" STEAM PIPING SYSTEM. REFER TO SPECIFICATION SECTION 33 83 00 AND SHEET C130 FOR ADDITIONAL INFORMATION.
- 9 REFER TO LARGE SCALE PARTIAL PLAN ON THIS SHEET FOR ADDITIONAL INFORMATION.
- 10 REFER TO LARGE SCALE PARTIAL PLAN ON SHEET M001 FOR ADDITIONAL INFORMATION.
- 11 PROVIDE 1" VALVED TAP TO DRAIN STEAM LINE.
- 12 PROVIDE INVERTED BUCKET TRAP SIZED FOR 760 LBS/HR.
- 13 EXISTING PVC CONDUIT TO REMAIN.
- 14 RE-INSULATE PIPING WHERE ASBESTOS INSULATION REMOVED.
- 15 THIS WORK SHALL OCCUR DURING THE ANNUAL 48 HOUR STEAM PLANT SHUTDOWN. THIS GENERALLY OCCURS OVER A WEEKEND, FRIDAY EVENING TO SUNDAY EVENING. COORDINATE EXACT SCHEDULE WITH COB.
- 16 PROVIDE NEW HANGERS ON EXISTING PIPING.
- 17 UNDER DEDUCT ALTERNATE #2, CONCRETE WORK ASSOCIATED WITH THIS PIER SHALL BE OMITTED.
- 18 PROVIDE NEW ANCHOR. RE-INSULATE PIPING AFTER ANCHOR INSTALLATION.
- 19 PROVIDE NEW DIRECT BURIED, PREFABRICATED, 2" HIGH PRESSURE RETURN PIPING SYSTEM. REFER TO SPECIFICATION SECTION 33 83 00 AND SHEET C130 FOR ADDITIONAL INFORMATION.
- 20 EXISTING TUNNEL TO REMAIN.
- 21 PIER REPLACEMENT IN THIS AREA TO BE COMPLETED DURING STEAM PLANT SHUT DOWN. UTILIZE QUICK SETTING CONCRETE. REFER TO SPECIFICATION SECTION 03 01 00 FOR ADDITIONAL INFORMATION.

1 Revisions	ADDENDUM #2 05/15/2014 Date	CONSULTANTS:		ARCHITECT/ENGINEERS:		Drawing Title	Project Title	Project No.	Office of Construction and Facilities Management  Department of Veterans Affairs
				 MEP Design Technology Planning Commissioning Energy Nationally Recognized Leader in Sustainability 1400 W Dorothy Lane, Dayton, OH 45409-1310 Ph 937-224-0861 Fax 937-224-5777 www.heapy.com		TUNNEL PLAN - NEW WORK	INSTALL STEAM LINE BYPASS B147 TO B121	552-15-210 2013-04013	
						Approved: Project Director	Location Dayton, Ohio	Building Number 121,147	
							Date 03/28/2014	Checked JAC	Dwg. of
							Drawn PCW		