

ADDENDUM #1 – REVISIONS TO THE CONTRACT DOCUMENTS
Grand Junction VA Medical Center PM&RS and Prosthetics Center

Specifications:

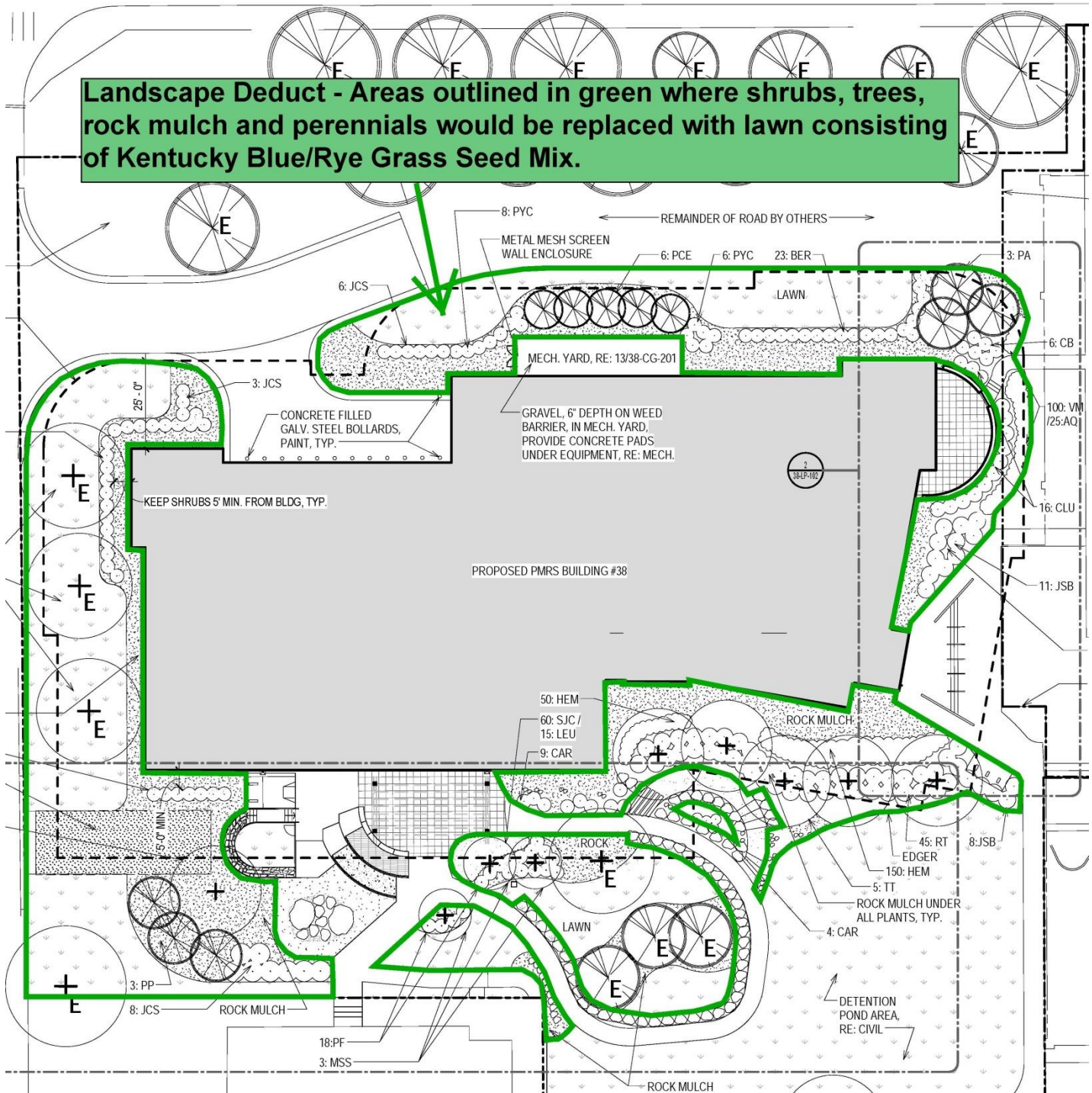
SECTION 01 00 00 GENERAL REQUIREMENTS

Add the following deduct alternates to 1.2 STATEMENT OF BID ITEM(S):

Item 1. Deduct Alternate Delete Landscaping

P. DEDUCT ALTERNATE NO. 14: Delete Landscaping.

Delete all landscape shrubs, trees, rock mulch and perennials and replace with lawn consisting of Kentucky Blue/Rye Grass Seed Mix. For further clarification, see delineation that follows:



ADDENDUM #1 – REVISIONS TO THE CONTRACT DOCUMENTS

Grand Junction VA Medical Center PM&RS and Prosthetics Center

Item 2. Deduct Alternate Delete Trellis

Q. DEDUCT ALTERNATE NO. 15: Delete Trellis.

Delete steel trellis in its entirety to include stone wrapped columns, footings and pedestals.

Item 3. Add Alternate Chilled Water Piping

R. ADDITIVE ALTERNATE NO. 16: CHILLED WATER PIPING

Install 6" factory pre-insulated chilled water piping at a depth of 4'-0" below grade to a point 5'-0" to the north of the mechanical room. Provide shutoff valves and blind flanges for future connection. All underground chilled water lines with fluid temperatures up to 250° F shall be 'Thermafab' type, as manufactured by Thermacor, or equivalent. The pipe shall be insulated with polyurethane foam and enclosed in an outer jacket of FRP or PVC. Standard fittings, takeoffs, expansion loops, anchors, etc., shall be factory fabricated and insulated. Fittings shall be prefabricated with short tangent lengths attached to simplify field installation. Chilled water conduit system internal piping shall be Schedule 40 black steel, ASTM A53, Grade A or B carbon steel through 10" pipe size, Thermacor 'Ferro-Therm' or equivalent. All joints shall be butt welded for sizes 2-1/2 inches and greater, and butt welded or socket welded for 2 inches and below. Where possible, straight sections shall be supplied in 20 or 40 foot random lengths with 6 to 8 inches of piping exposed at each end for field joint fabrication.

Route chilled water piping up along north interior wall of mechanical room and provide valves and blind flanges for future connection. Chilled water pipe system is intended to sit empty until possible future connection to campus chilled water loop.

Item 4. Add Alternate AHU Additional Space

S. ADDITIVE ALTERNATE NO. 17: AHU ADDITIONAL SPACE

AHU manufacturer shall provide additional space in unit for future 6-row chilled water coil downstream of preheat coil. Do not provide coil, only space to accommodate future installation.

Item 5. Delete RE Field Office

SECTION 01 00 00 GENERAL REQUIREMENTS

Delete subsection 1.14 Resident Engineer's Field Office in its entirety.

Item 6. Change to Photographic Documentation

SECTION 01 00 00 GENERAL REQUIREMENTS

Replace the second to last sentence of subsection 1.23 G (Photographic Documentation) with "BIM requirements will no longer be necessary. Permanent Record shall have interface capabilities with Contract Drawings."

Item 7. Change to Decorative Metal Note

SECTION 09 06 00 SCHEDULE FOR FINISHES

Spec Division 05 50 00 Decorative Metal DM-1, the "Notes" column shall read: "Security and Check In Desks". Refer to D1/38-IN-301 and D4/38-IN-301.

Item 8. Change to Ceramic Tile

SECTION 09 06 00 SCHEDULE FOR FINISHES

Spec Division 09 3013 Ceramic Tile: For G-1 and G-2 Basis of Design Manufacturer shall read: "Laticrete", Description/Model shall read "SpectraLOK Pro Premium" and Color shall read "to be determined at submittal review."

ADDENDUM #1 – REVISIONS TO THE CONTRACT DOCUMENTS

Grand Junction VA Medical Center PM&RS and Prosthetics Center

Item 9. Change to Painting

SECTION 09 06 00 SCHEDULE FOR FINISHES

Spec Division 09 9100, Spec Section Painting: PT-2 shall read: "Color - #6119 Antique White – Main Walls". PT-3 shall read: "Color - #6121 Whole Wheat – Accent, door/window frames." (PT-1 is unchanged. PT-3a and PT-3b are revised to be PT-3. PT-4, PT-5, EPX-1 and UC-1 are unchanged).

Item 10. Change to Blinds

SECTION 09 06 00 SCHEDULE FOR FINISHES

Spec Division 12 2113 "throughout" in the "Notes" column shall mean: "all glazed openings located on exterior walls except Waiting 101, Conference 1 – Room 176, Conference 2 – Room 177, Conference 3 – Room 178 and glazed doors and sidelites. (Waiting 101 receives no blinds or shades). Gym 104 doors shall not receive blinds, but the sidelites next to and window WF-07 between doors 104C and 104D shall receive blinds. Glazing noted as "Glazing 2", clerestory windows, located above "Glazing 1" view level windows, shall not receive blinds."

Item 11. Change to Shades

SECTION 09 06 00 SCHEDULE FOR FINISHES

Spec Division 12 2413 the "Notes" column shall read: "Roller shades are to be provided on the glazed openings located on exterior walls of Conference 1 – Room 176, Conference 2 – Room 177 and Conference 3 – Room 178, covering both clerestory and view windows to provide black out capability for all glazed openings in these rooms.

For Manually Operated Roller Shades:

- A. Field Measurements: Where roller shades are indicated to fit to other construction, verify dimensions of other construction by field measurements before fabrication and indicate measurements on Shop Drawings. Allow clearances for operating hardware of operable glazed units through entire operating range. Notify Architect of installation conditions that vary from Drawings. Coordinate fabrication schedule with construction progress to avoid delaying the Work.
- B. Chain-and-Clutch Operating Mechanisms: With continuous-loop bead chain and clutch that stops shade movement when bead chain is released; permanently adjusted and lubricated.
 - 1. Bead Chains: Manufacturer's standard.
 - a. Loop Length: Full length of roller shade.
 - b. Limit Stops: Provide upper and lower ball stops.
 - c. Chain-Retainer Type: Clip, jamb mount.
 - 2. Spring Lift-Assist Mechanisms: Manufacturer's standard for balancing roller-shade weight and lifting heavy roller shades.
 - a. Provide for shadebands that weigh more than 10 lb or for shades as recommended by manufacturer, whichever criteria are more stringent.
- C. Rollers: Corrosion-resistant steel or extruded-aluminum tubes of diameters and wall thicknesses required to accommodate operating mechanisms and weights and widths of shadebands indicated without deflection. Provide with permanently lubricated drive-end assemblies and idle-end assemblies designed to facilitate removal of shadebands for service.

ADDENDUM #1 – REVISIONS TO THE CONTRACT DOCUMENTS

Grand Junction VA Medical Center PM&RS and Prosthetics Center

1. Roller Drive-End Location: Right side of inside face of shade.
 2. Direction of Shadeband Roll: Regular, from back of roller.
 3. Shadeband-to-Roller Attachment: Manufacturer's standard method.
- D. Mounting Hardware: Brackets or endcaps, corrosion resistant and compatible with roller assembly, operating mechanism, installation accessories, and mounting location and conditions indicated.
- E. Shadebands:
1. Shadeband Material: Light-filtering fabric.
 2. Shadeband Bottom (Hem) Bar: Steel or extruded aluminum.
 - a. Type: Enclosed in sealed pocket of shadeband material.
 - b. Color and Finish: As indicated in section 090640 Finish Material Schedule.
- F. Installation Accessories:
1. Front Fascia: Aluminum extrusion that conceals front and underside of roller and operating mechanism and attaches to roller endcaps without exposed fasteners.
 - a. Shape: L-shaped.
 - b. Height: Manufacturer's standard height required to conceal roller and shadeband when shade is fully open, but not less than 4 inches.
 2. Exposed Headbox: Rectangular, extruded-aluminum enclosure including front fascia, top and back covers, endcaps, and removable bottom closure.
 - a. Height: Manufacturer's standard height required to enclose roller and shadeband when shade is fully open, but not less than 4 inches.
 3. Endcap Covers: To cover exposed endcaps.
 4. Installation Accessories Color and Finish: As selected from manufacturer's full range.

FABRICATION

- A. Product Safety Standard: Fabricate roller shades to comply with WCMA A 100.1, including requirements for flexible, chain-loop devices; lead content of components; and warning labels.
- B. Unit Sizes: Fabricate units in sizes to fill window and other openings as follows, measured at 74 deg F:
1. Between (Inside) Jamb Installation: Width equal to jamb-to-jamb dimension of opening in which shade is installed less 1/4 inch per side or 1/2-inch total, plus or minus 1/8 inch . Length equal to head-to-sill or -floor dimension of opening in which shade is installed less 1/4 inch, plus or minus 1/8 inch.
 2. Outside of Jamb Installation: Width and length as indicated, with terminations between shades of end-to-end installations at centerlines of mullion or other defined vertical separations between openings.
- C. Shadeband Fabrication: Fabricate shadebands without battens or seams to extent possible except as follows:

ADDENDUM #1 – REVISIONS TO THE CONTRACT DOCUMENTS

Grand Junction VA Medical Center PM&RS and Prosthetics Center

1. Vertical Shades: Where width-to-length ratio of shadeband is equal to or greater than 1:4, provide battens and seams at uniform spacings along shadeband length to ensure shadeband tracking and alignment through its full range of movement without distortion of the material.

EXECUTION

- A. Install roller shades level, plumb, and aligned with adjacent units according to manufacturer's written instructions.
 1. Opaque Shadebands: Located so shadeband is not closer than 2 inches to interior face of glass. Allow clearances for window operation hardware.
- B. Adjust and balance roller shades to operate smoothly, easily, safely, and free from binding or malfunction throughout entire operational range.
- C. Clean roller-shade surfaces after installation, according to manufacturer's written instructions.
- D. Provide final protection and maintain conditions, in a manner acceptable to manufacturer and Installer, that ensure that roller shades are without damage or deterioration at time of Substantial Completion.
- E. Replace damaged roller shades that cannot be repaired, in a manner approved by Architect, before time of Substantial Completion."

Item 12. Change to Fire Hydrant Specification

Section 33 10 00

Revise Subsection 2.8 Fire Hydrants A as follows :

A. Size of main valve opening of each hydrant shall be 125 mm (5 inches), minimum. Hose thread, size of fire apparatus connection, and shape, size and direction of rotation of operating head of hydrant shall be identical with those in use at station.

Item 13. Baby Changing Table

SECTION 10 28 00

Add Section:

2.16 BABY CHANGING STATION

- A. Surface-Mounted Horizontal Design Baby Changing Stations:
 1. Basis of Design: Model KB200-00, cream color, as Manufactured by Koala Kare Products, a Division of Bobrick.
 2. Or equal.

ADDENDUM #1 – REVISIONS TO THE CONTRACT DOCUMENTS
Grand Junction VA Medical Center PM&RS and Prosthetics Center

Civil:

Item 14. Correct Loading Dock Note

Sheet 38-CG-101

Correct loading dock note from "Dock Lift Beacon BTAD-40-606" to "Dock Lift Beacon BTAD-50-608 Or Equal".

Item 15. Correct Loading Dock Note

Sheet 38-CG-102

Correct loading dock note from "Dock Lift Beacon BTAD-40-606" to "Dock Lift Beacon BTAD-50-608 Or Equal".

Item 16. Correct Detail 2 Note

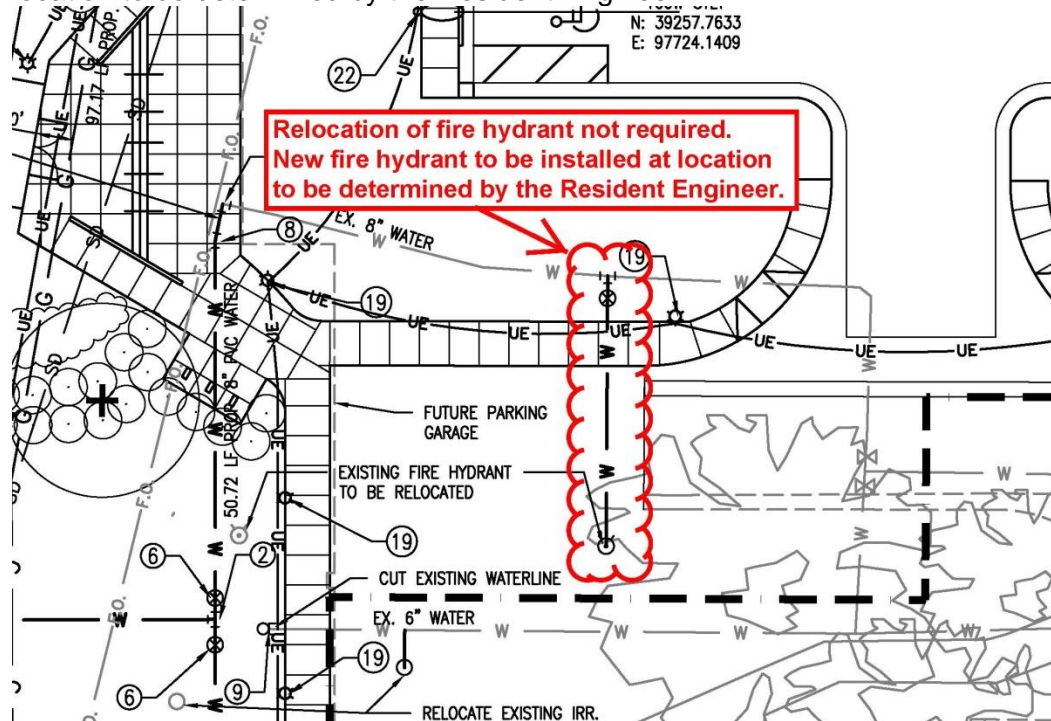
Sheet 38-CG-201

Correct Detail 2 note from "Gravel Path" to "Conc. Walk (4" Thick)".

Item 17. Delete Fire Hydrant Relocation/Add New Fire Hydrant

Sheet 38-CU-101

Delete relocating fire hydrant at location as shown in sketch below. Install new fire hydrant at location to be determined by the Resident Engineer.



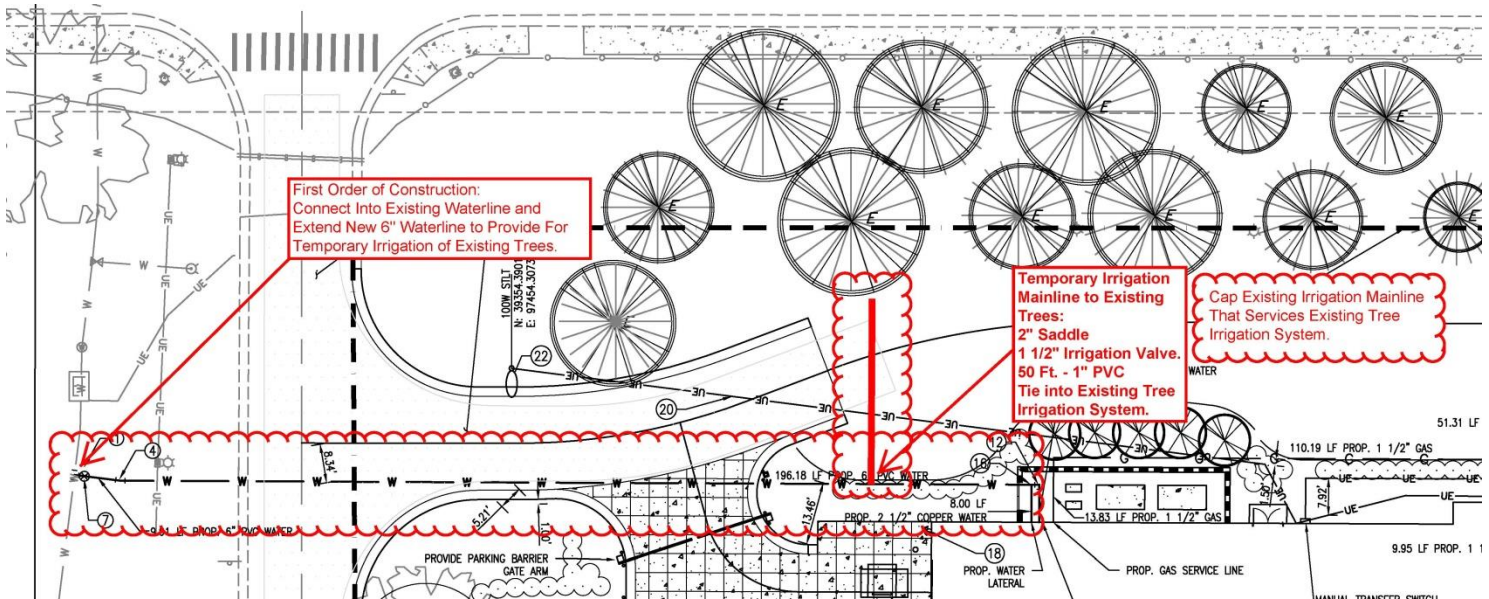
ADDENDUM #1 – REVISIONS TO THE CONTRACT DOCUMENTS

Grand Junction VA Medical Center PM&RS and Prosthetics Center

Item 18: Provide Temporary Irrigation to Existing Trees

Sheet 38-CU-101

Revise sheet to include notes in sketch below to provide temporary irrigation to existing trees during construction.



Landscape:

Item 19. Revise Parking Lot Note

Sheet 38-LP-101

Revise parking lot note "LIMITS OF DEDUCT ALTERNATE #1, RE: CIVIL" to "LIMITS OF **CHANGE #1**, RE: CIVIL". Change #1 is detailed in Specification Section 01 00 00 General Requirements under Subsection 1.2 Statement of Bid Item(s).

Eliminate parking lot note "PROVIDE LAWN AROUND PARKING LOT WITH KENTUCKY BLUE / RYE GRASS SEED MIX WITHIN PROJECT BOUNDARY LINE AS PART OF DEDUCT ALTERNATE #1".

Item 20. Eliminate Seeding Note and Bike Rack Note

Sheet 38-LP-102

Eliminate note in detention pond area "DEDUCT #2, THIS AREA, PROVIDING SEEDING ONLY, TYP., RE: CIVIL".

Revise note "BIKE RACKS (DEDUCT ALTERNATE #4)" to "BIKE RACKS".

Structural:

Item 21. Column Clarification

Sheet 38-SF-101

Clarification - The columns found at Grids DA-D1, DB-D1, DC-D1, DE-D1 and DF-D1 are HSS12X6X5/8.

ADDENDUM #1 – REVISIONS TO THE CONTRACT DOCUMENTS

Grand Junction VA Medical Center PM&RS and Prosthetics Center

Item 22. High Window Addition

Sheet 38-S-203:

At wall elevation F1, provide a 8" bond beam with 1-#6 E.F. at the sill of the high window from the window jamb slightly to the left of grid C to the right door jamb. Delete lowermost reinforcement shown through window between grids C.7 and C.

At wall elevation F1, provide a bond beam and vertical reinforcement at the sill of the window between grids C.7 and C similar to D1I38-S-203.

At wall elevation F1, discontinuous vertical reinforcement shown should be at the high window. This is typical. Continuous reinforcement should be where there is no wall opening for a window. This is typical.

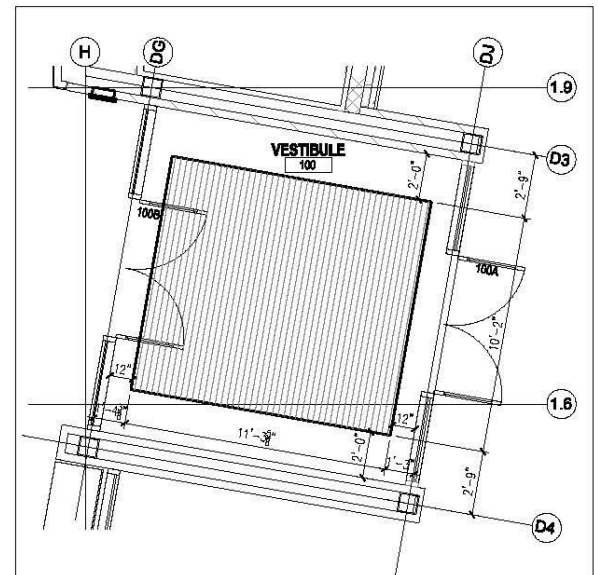
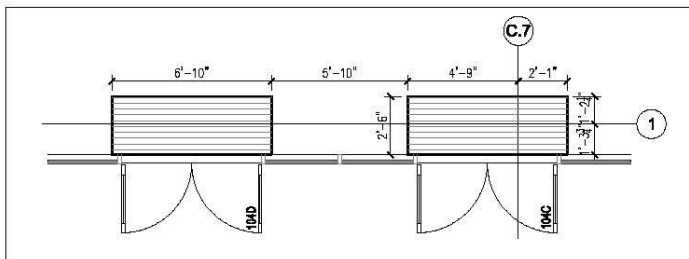
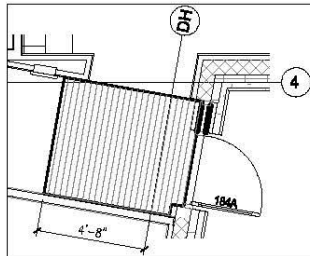
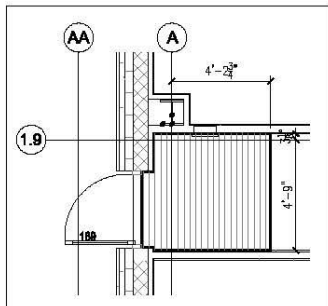
At wall elevation F1, provide typical vertical reinforcement.
Reinforcement is continuous, otherwise discontinuous at windows openings.

At Wall elevation D1, vertical reinforcement is not continuous through strip window (typical).

Item 23: Floor Grille Dimensions

Sheet 38-S-303:

Add the following floor grille dimensioning details:



1

FIRST FLOOR - FLOOR GRILLE DIMENSIONS

1/4" = 1'-0"

RE: 38-IN-101



ADDENDUM #1 – REVISIONS TO THE CONTRACT DOCUMENTS

Grand Junction VA Medical Center PM&RS and Prosthetics Center

Architectural:

Item 24: Revise Trellis Detail

Sheet 38-AE-301:

Revise detail 5 “TRELLIS ELEVATION (DEDUCT ALTERNATE #4)” to “TRELLIS ELEVATION (DEDUCT ALTERNATE #15)”

Item 25: Revision to Include Clerestory Window

Sheet 38-AE-302:

Revise 2/38-AE-302 to include an additional clerestory (high) window similar to the upper center lite, (complete aluminum fixed storefront framing with Glazing 2), of WF-14, 4/38-A-702. Dimensions to be 5'-4" x 2'-0".

Additional clerestory (high) window to be located 2'-0" west of grid C. Hollow metal door and frame 142B to be located 9'-4" west of grid C.

Item 26: Revise to Include Additional Window

Sheet 38-AI-101:

Revise 1/38-AI-101 to reflect an additional clerestory (high) window, 5'-4" in length, located 2'-0" west of grid C. Window shall be similar to the upper center lite, (complete aluminum fixed storefront framing with Glazing 2), of WF-14, 4/38-A-702.

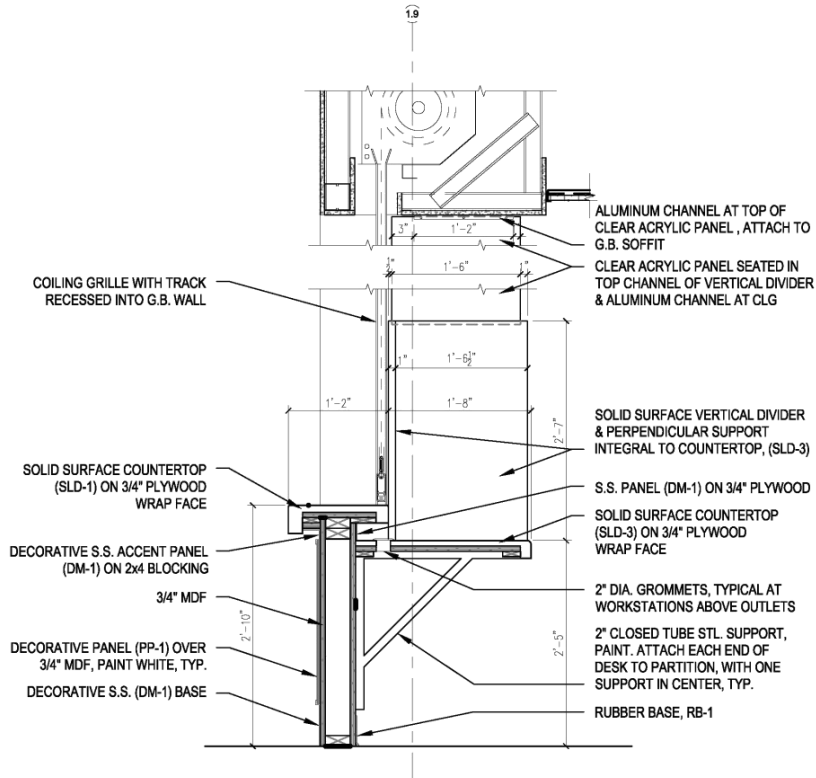
ADDENDUM #1 – REVISIONS TO THE CONTRACT DOCUMENTS
Grand Junction VA Medical Center PM&RS and Prosthetics Center

Interiors:

Item 27: Divider to Check-In Counter

Sheet 38-IN-301:

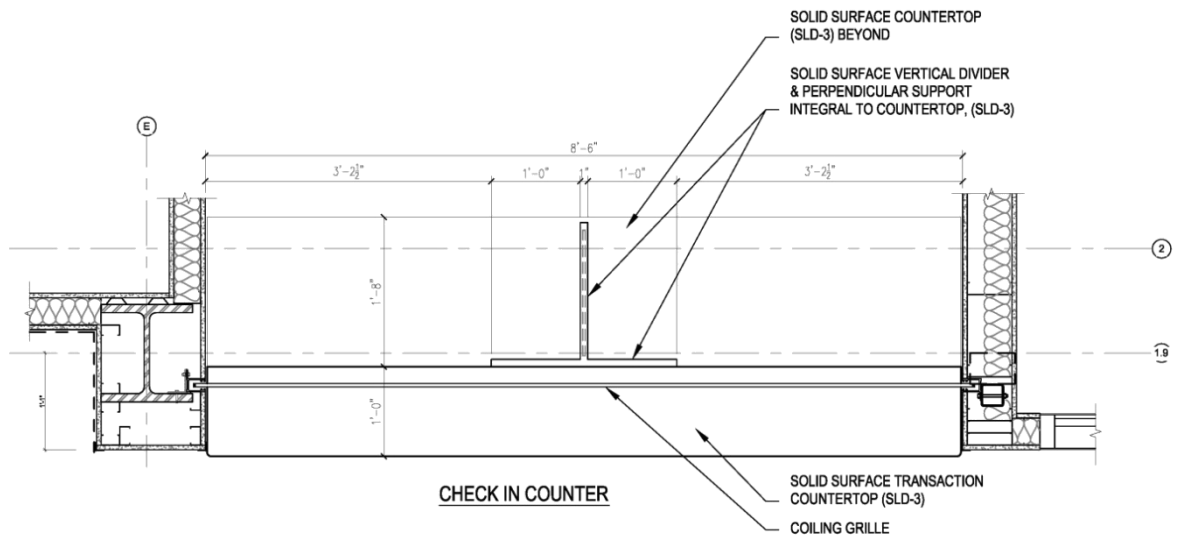
Add a solid surface vertical divider and perpendicular support integral to the countertop to the check-in counter (room 155) per the following drawings:



1 CHECK-IN COUNTER SECTION

1" = 1'-0"

RE: 38-IN-301



2 PLAN DETAIL - CHECK-IN COUNTER

1" = 1'-0"

RE: 38-IN-101

ADDENDUM #1 – REVISIONS TO THE CONTRACT DOCUMENTS

Grand Junction VA Medical Center PM&RS and Prosthetics Center

Item 28: Toilet Accessory (Baby Changing Table)

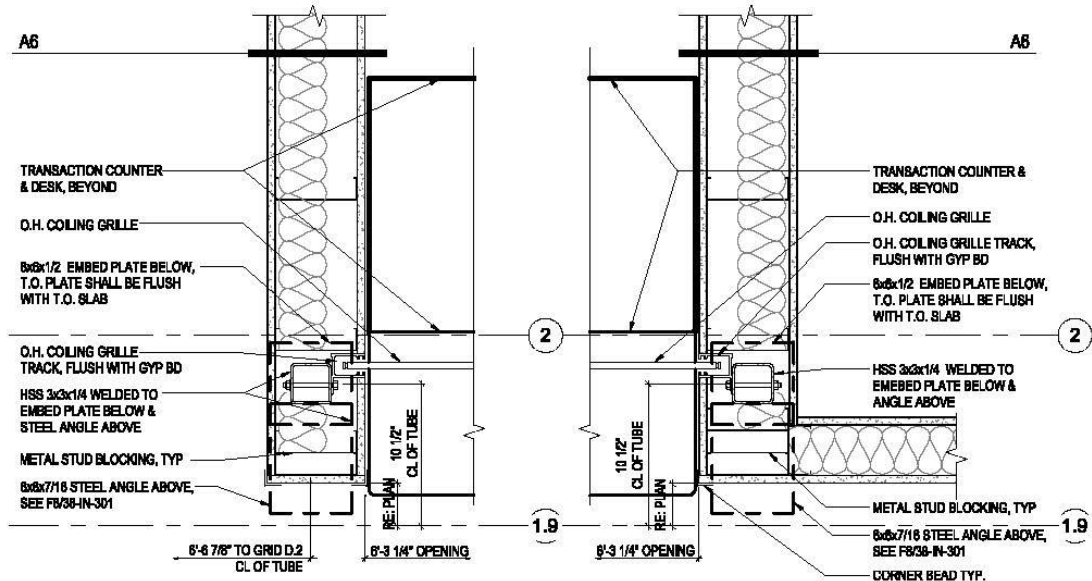
Sheet 38-IN-401:

Add one (1) TA-18 Baby Changing Station to the Toilet Accessory Schedule. In Toilet 170, move TA-13 to the north wall. Install 6" from the west wall. In Toilet 170, mount TA-18 on the west wall in previous location of TA-13. Install in a manner when in the fully open position, that is consistent with manufacturer's instructions, adhering to ADA requirements, and avoiding both the full swing of the door and relocated TA-13.

Item 29: Revise Coiling Grille at Check-In Counter

Sheet 38-IN-411

Revise details F1, F2, F3, F4 per the following drawings:



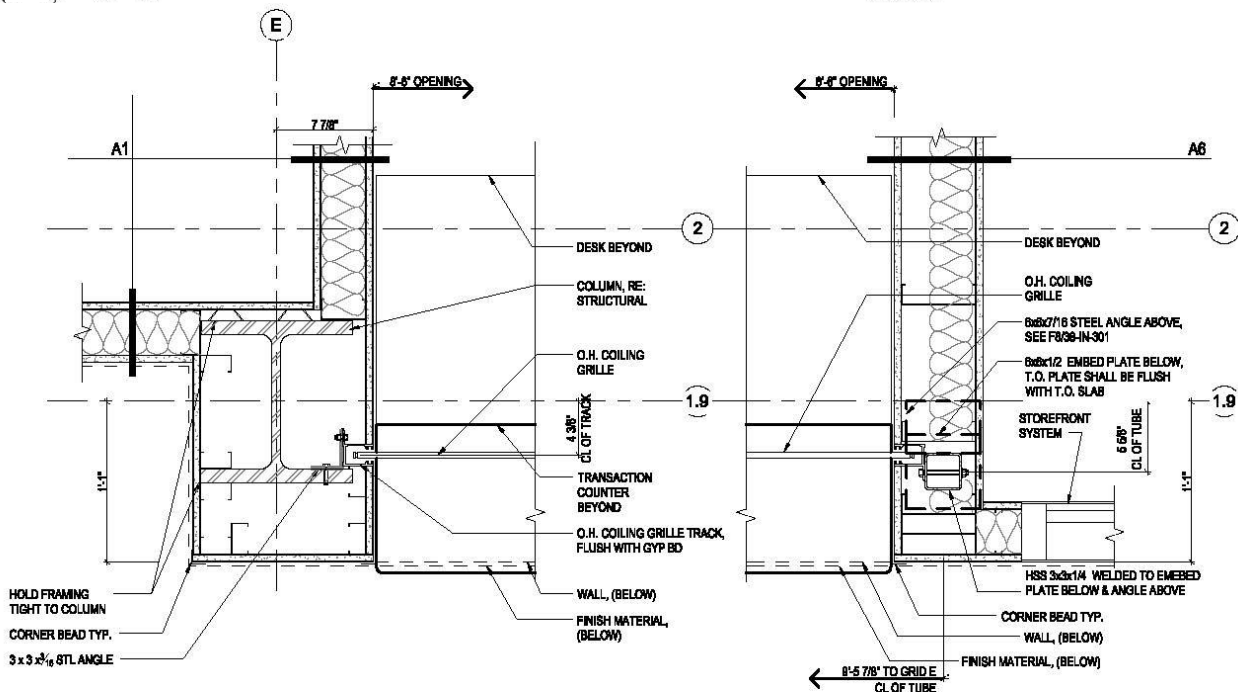
F1

F2

PLAN DETAIL - COILING GRILLE AT CHECK-OUT COUNTER

1 1/2\" = 1'-0"

RE: 38-IN-411



F3

F4

PLAN DETAIL - COILING GRILLE AT CHECK-IN COUNTER

1 1/2\" = 1'-0"

RE: 38-IN-411

ADDENDUM #1 – REVISIONS TO THE CONTRACT DOCUMENTS

Grand Junction VA Medical Center PM&RS and Prosthetics Center

Mechanical:

Item 30: AHU Rating

Sheet 38-M-701, Mechanical Schedules

AHU/CU-1 shall have a Unit IEER of 20.8 and shall be rated in accordance with AHRI standard 340/360-2007. AHU/CU-1 shall have an EER of 14.0. Unit shall be rated 25,000 AIC.

Item 31: Mechanical Controls

Sheet 38-MI-601, Mechanical Controls

Mechanical Controls shall tie into the existing campus Johnson Controls FMS in the Boiler Plant, Building 9.

Item 32: Exhaust Duct

Sheet 38-MH-101

Keyed note 12. In addition to the pad for the future dust collector, a 6" medium pressure exhaust duct shall be routed through the Mechanical room north wall and capped for future use. The medium pressure dust exhaust duct shall be routed to machine room 141 and capped for future use.

Electrical:

Item 33: Grounding Rods

Sheet 38-EG-101, Grounding Plan

Add 3/4"x10'-0" grounds rods along counterpoise system. Provide rods at all connections to Lightning Protection system drops.

Item 34: Conduit Systems

Section 28 31 00-2.2-A-4

Add "All conduit systems shall be red."