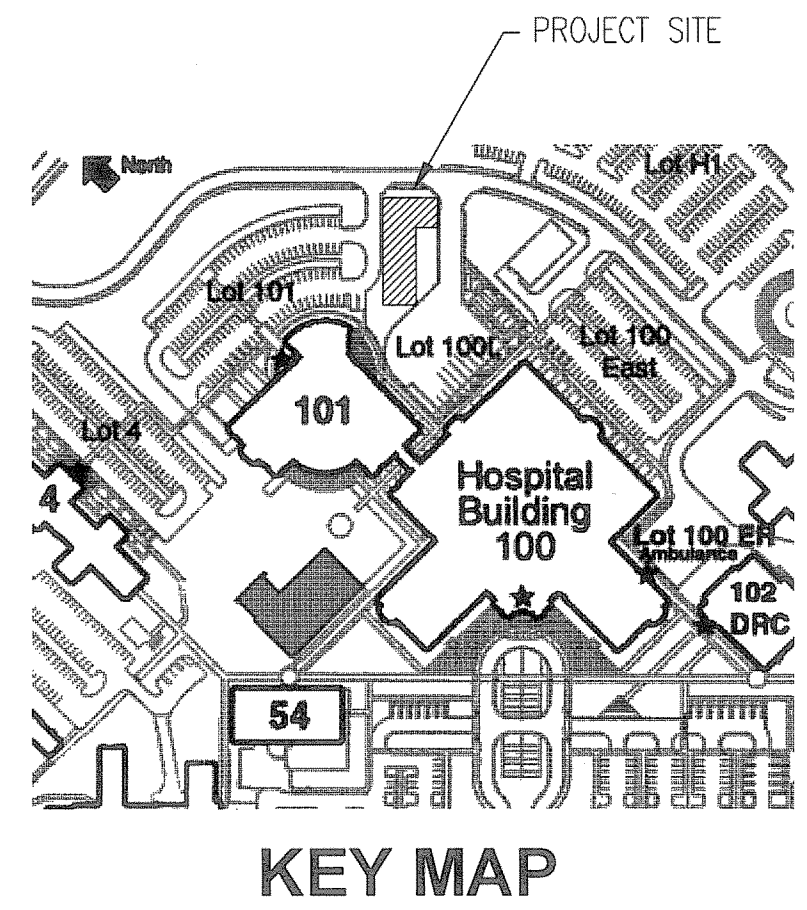
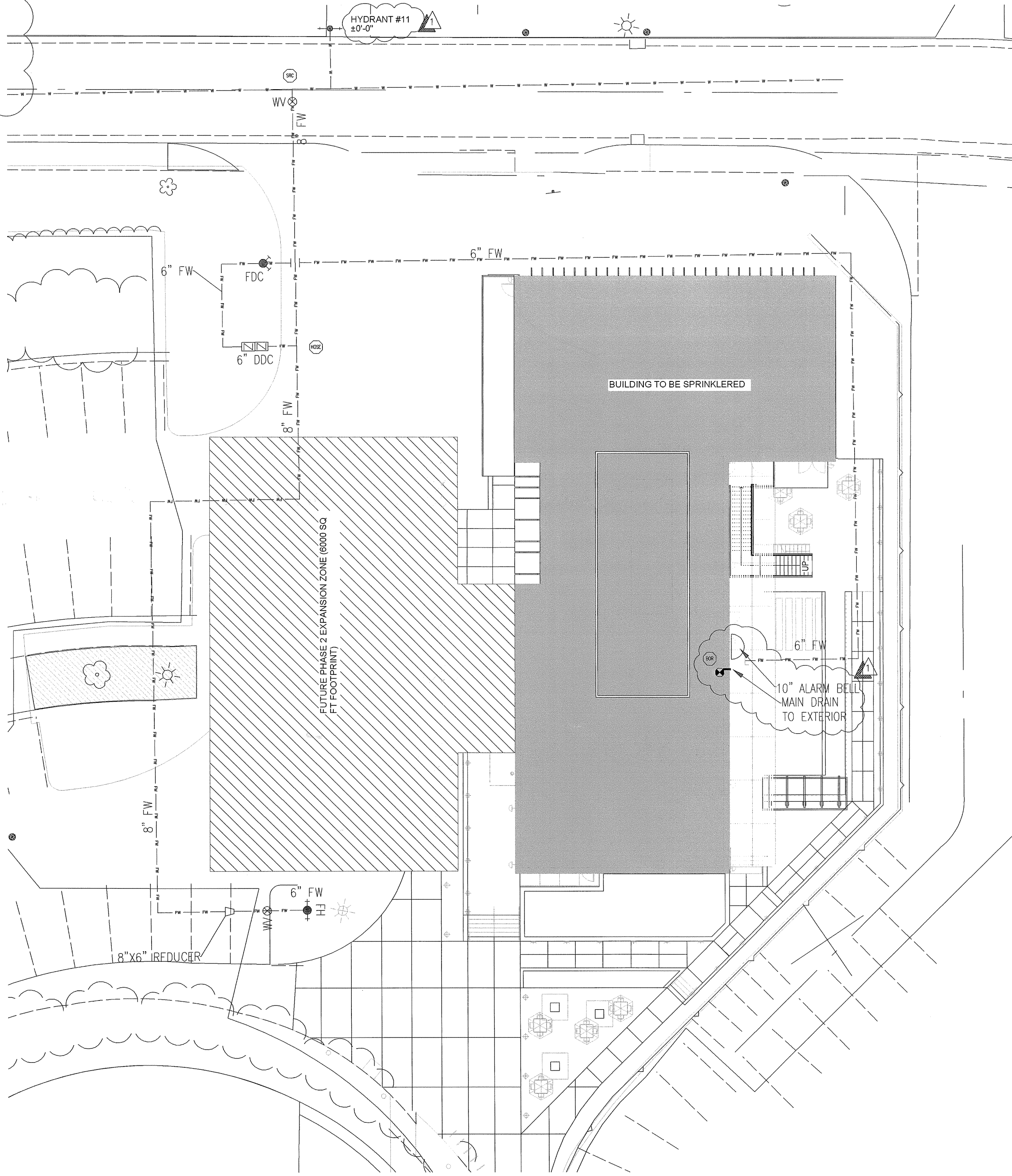


WATER FLOW TEST INFORMATION	
STATIC (PSI)	85
RESIDUAL (PSI)	45
FLOW (GPM)	1075
DATE	10/27/2008
TIME	N/A
TEST LOCATION	HYDRANT #1
3801 MIRANDA AVE. PALO ALTO, CA	OBTAINED FROM: CDSO FIRE PROTECTION



VA PAHCS
VA Mental Health Center
 VA PALO ALTO
 3801 Miranda Avenue
 Palo Alto, California 94304

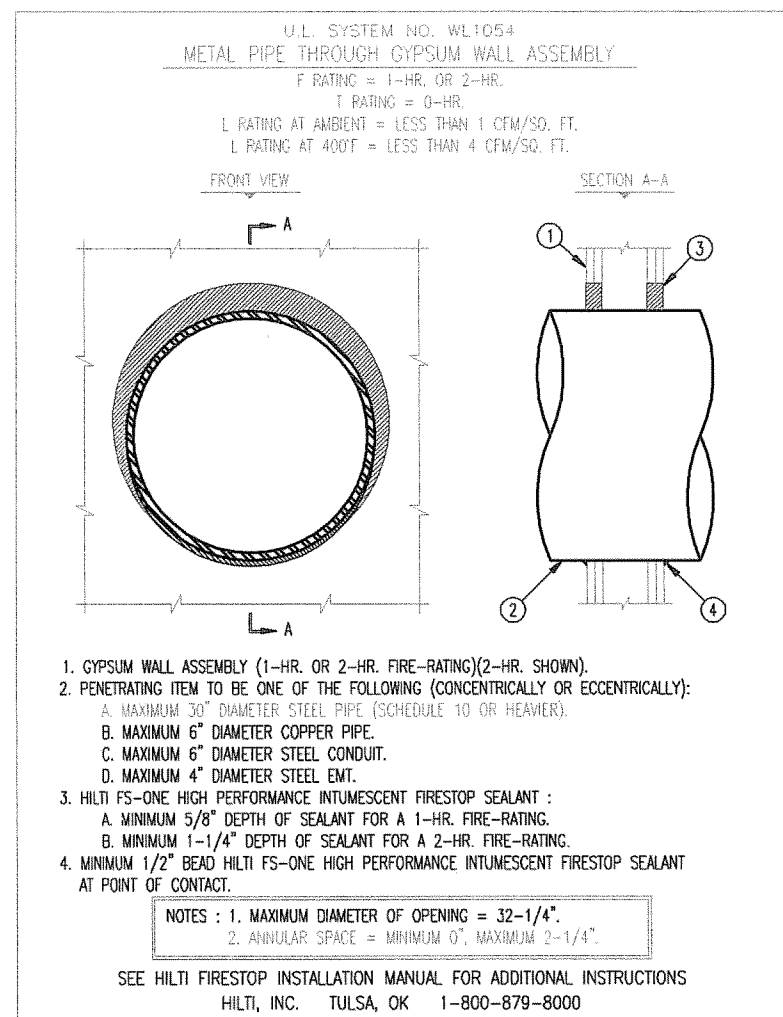
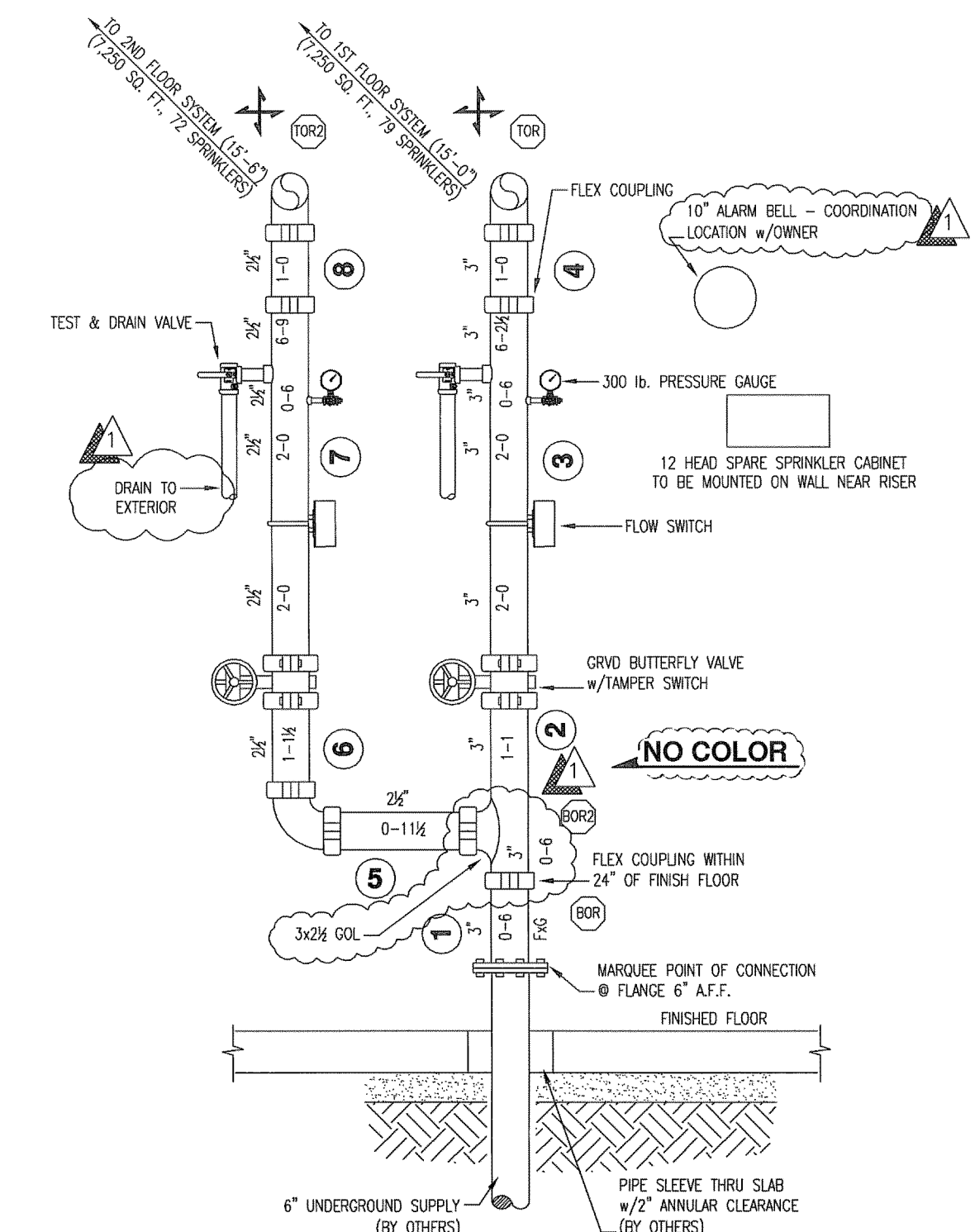


GENERAL NOTES

1. THE AUTOMATIC SPRINKLER SYSTEM SHALL CONFORM TO THE REQUIREMENTS OF THE 2010 EDITION OF NFPA 13.
2. PENETRATIONS OF RATED ASSEMBLIES SHALL BE FIRE STOPPED. (SEE DETAIL)
3. MARQUEE FIRE PROTECTION TO BEGIN WORK AT A FLANGED OUTLET LEFT IN THE RISER ROOM.
4. ALL ELECTRICAL WIRING TO BE PERFORMED BY OTHERS.
5. ARMOVERS LONGER THAN 24" SHALL BE PROVIDED WITH A HANGER.
6. THE NEW SYSTEM IS HYDRAULICALLY CALCULATED. (SEE PIPING PLAN)
7. NEW PIPING SHALL BE SUPPLIED FROM 6" UNDERGROUND.
8. UPON COMPLETION, THE OVERHEAD SYSTEM SHALL BE TESTED AT 200 PSI FOR TWO (2) HOURS. (BEFORE TIE-IN)
9. BUILDING CONSTRUCTION IS OF NON-COMBUSTIBLE CONSTRUCTION.
10. OWNER: DEPARTMENT OF VETERAN AFFAIRS
3801 MIRANDA AVENUE
PALO ALTO, CA 94304
11. EXCLUSIONS (WORK BY OTHERS):
 1. Cleaning, Priming and Painting of Pipe.
 2. Wiring of Devices and Alarms.
 3. Access Panels.
 4. Structural Calculations.
 5. Freeze Protection.
 6. Plan Review, Permit and Water Dept. Flow Fees
 7. Underground.

EARTHQUAKE BRACING NOTES

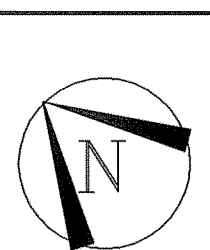
1. EARTHQUAKE BRACING SHALL BE PROVIDED PER NFPA 13 (2010) & SECTION 9.3.5.
2. LOADS ARE DETERMINED BY ANALYSIS PER 9.3.5.6.1 (SEE CALCULATIONS).
3. LONGITUDINAL BRACES SHALL BE ALLOWED TO ACT AS LATERAL BRACES WHERE THEY ARE INSTALLED WITHIN 24" OF PIPING WHICH IS BRACED LATERALLY AND VICE VERSA PER 9.3.5.4.2 & 9.3.5.3.5.
4. EACH RUN OF PIPE BETWEEN A CHANGE IN DIRECTION SHALL BE PROVIDED WITH BOTH LATERAL AND LONGITUDINAL BRACING. CORROSION: PIPE RINGS LESS THAN 12 IN. PER 9.3.5.11.3.



UNDERGROUND SITE PLAN

1. INFORMATION SHOWN IS FOR REFERENCE OF HYDRAULIC DESIGN INFORMATION ONLY. DESIGN AND INSTALLATION IS BY OTHERS.
2. U.G. PIPING SHALL BE FLUSHED AND TESTED (BY OTHERS) BEFORE TIE-IN.
3. MARQUEE FIRE PROTECTION TO BEGIN WORK AT A FLANGED OUTLET IN THE RISER ROOM.

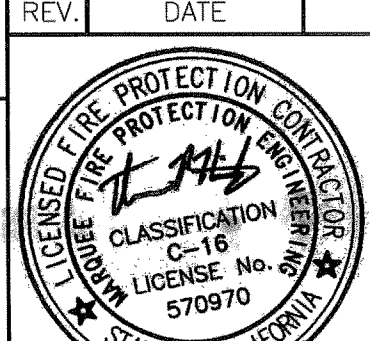
"AS-BUILT"



SYMBOL	DESCRIPTION	SYMBOL	DESCRIPTION
1	2-WAY EARTHQUAKE BRACE	2	SYSTEM RISER
2	4-WAY EARTHQUAKE BRACE	3	PIPE ELEVATION (NOT SHOWN)
3	PIPE ELEVATION (NOT SHOWN)	4	PIPE ELEVATION (NOT SHOWN)
4	PIPE ELEVATION (NOT SHOWN)	5	PIPE ELEVATION (NOT SHOWN)
5	PIPE ELEVATION (NOT SHOWN)	6	PIPE ELEVATION (NOT SHOWN)
6	PIPE ELEVATION (NOT SHOWN)	7	PIPE ELEVATION (NOT SHOWN)
7	PIPE ELEVATION (NOT SHOWN)	8	PIPE ELEVATION (NOT SHOWN)
8	PIPE ELEVATION (NOT SHOWN)	9	PIPE ELEVATION (NOT SHOWN)
9	PIPE ELEVATION (NOT SHOWN)	10	PIPE ELEVATION (NOT SHOWN)
10	PIPE ELEVATION (NOT SHOWN)	11	PIPE ELEVATION (NOT SHOWN)
11	PIPE ELEVATION (NOT SHOWN)	12	PIPE ELEVATION (NOT SHOWN)
12	PIPE ELEVATION (NOT SHOWN)	13	PIPE ELEVATION (NOT SHOWN)
13	PIPE ELEVATION (NOT SHOWN)	14	PIPE ELEVATION (NOT SHOWN)
14	PIPE ELEVATION (NOT SHOWN)	15	PIPE ELEVATION (NOT SHOWN)
15	PIPE ELEVATION (NOT SHOWN)	16	PIPE ELEVATION (NOT SHOWN)
16	PIPE ELEVATION (NOT SHOWN)	17	PIPE ELEVATION (NOT SHOWN)
17	PIPE ELEVATION (NOT SHOWN)	18	PIPE ELEVATION (NOT SHOWN)
18	PIPE ELEVATION (NOT SHOWN)	19	PIPE ELEVATION (NOT SHOWN)
19	PIPE ELEVATION (NOT SHOWN)	20	PIPE ELEVATION (NOT SHOWN)
20	PIPE ELEVATION (NOT SHOWN)	21	PIPE ELEVATION (NOT SHOWN)
21	PIPE ELEVATION (NOT SHOWN)	22	PIPE ELEVATION (NOT SHOWN)
22	PIPE ELEVATION (NOT SHOWN)	23	PIPE ELEVATION (NOT SHOWN)
23	PIPE ELEVATION (NOT SHOWN)	24	PIPE ELEVATION (NOT SHOWN)
24	PIPE ELEVATION (NOT SHOWN)	25	PIPE ELEVATION (NOT SHOWN)
25	PIPE ELEVATION (NOT SHOWN)	26	PIPE ELEVATION (NOT SHOWN)
26	PIPE ELEVATION (NOT SHOWN)	27	PIPE ELEVATION (NOT SHOWN)
27	PIPE ELEVATION (NOT SHOWN)	28	PIPE ELEVATION (NOT SHOWN)
28	PIPE ELEVATION (NOT SHOWN)	29	PIPE ELEVATION (NOT SHOWN)
29	PIPE ELEVATION (NOT SHOWN)	30	PIPE ELEVATION (NOT SHOWN)
30	PIPE ELEVATION (NOT SHOWN)	31	PIPE ELEVATION (NOT SHOWN)
31	PIPE ELEVATION (NOT SHOWN)	32	PIPE ELEVATION (NOT SHOWN)
32	PIPE ELEVATION (NOT SHOWN)	33	PIPE ELEVATION (NOT SHOWN)
33	PIPE ELEVATION (NOT SHOWN)	34	PIPE ELEVATION (NOT SHOWN)
34	PIPE ELEVATION (NOT SHOWN)	35	PIPE ELEVATION (NOT SHOWN)
35	PIPE ELEVATION (NOT SHOWN)	36	PIPE ELEVATION (NOT SHOWN)
36	PIPE ELEVATION (NOT SHOWN)	37	PIPE ELEVATION (NOT SHOWN)
37	PIPE ELEVATION (NOT SHOWN)	38	PIPE ELEVATION (NOT SHOWN)
38	PIPE ELEVATION (NOT SHOWN)	39	PIPE ELEVATION (NOT SHOWN)
39	PIPE ELEVATION (NOT SHOWN)	40	PIPE ELEVATION (NOT SHOWN)
40	PIPE ELEVATION (NOT SHOWN)	41	PIPE ELEVATION (NOT SHOWN)
41	PIPE ELEVATION (NOT SHOWN)	42	PIPE ELEVATION (NOT SHOWN)
42	PIPE ELEVATION (NOT SHOWN)	43	PIPE ELEVATION (NOT SHOWN)
43	PIPE ELEVATION (NOT SHOWN)	44	PIPE ELEVATION (NOT SHOWN)
44	PIPE ELEVATION (NOT SHOWN)	45	PIPE ELEVATION (NOT SHOWN)
45	PIPE ELEVATION (NOT SHOWN)	46	PIPE ELEVATION (NOT SHOWN)
46	PIPE ELEVATION (NOT SHOWN)	47	PIPE ELEVATION (NOT SHOWN)
47	PIPE ELEVATION (NOT SHOWN)	48	PIPE ELEVATION (NOT SHOWN)
48	PIPE ELEVATION (NOT SHOWN)	49	PIPE ELEVATION (NOT SHOWN)
49	PIPE ELEVATION (NOT SHOWN)	50	PIPE ELEVATION (NOT SHOWN)
50	PIPE ELEVATION (NOT SHOWN)	51	PIPE ELEVATION (NOT SHOWN)
51	PIPE ELEVATION (NOT SHOWN)	52	PIPE ELEVATION (NOT SHOWN)
52	PIPE ELEVATION (NOT SHOWN)	53	PIPE ELEVATION (NOT SHOWN)
53	PIPE ELEVATION (NOT SHOWN)	54	PIPE ELEVATION (NOT SHOWN)
54	PIPE ELEVATION (NOT SHOWN)	55	PIPE ELEVATION (NOT SHOWN)
55	PIPE ELEVATION (NOT SHOWN)	56	PIPE ELEVATION (NOT SHOWN)
56	PIPE ELEVATION (NOT SHOWN)	57	PIPE ELEVATION (NOT SHOWN)
57	PIPE ELEVATION (NOT SHOWN)	58	PIPE ELEVATION (NOT SHOWN)
58	PIPE ELEVATION (NOT SHOWN)	59	PIPE ELEVATION (NOT SHOWN)
59	PIPE ELEVATION (NOT SHOWN)	60	PIPE ELEVATION (NOT SHOWN)
60	PIPE ELEVATION (NOT SHOWN)	61	PIPE ELEVATION (NOT SHOWN)
61	PIPE ELEVATION (NOT SHOWN)	62	PIPE ELEVATION (NOT SHOWN)
62	PIPE ELEVATION (NOT SHOWN)	63	PIPE ELEVATION (NOT SHOWN)
63	PIPE ELEVATION (NOT SHOWN)	64	PIPE ELEVATION (NOT SHOWN)
64	PIPE ELEVATION (NOT SHOWN)	65	PIPE ELEVATION (NOT SHOWN)
65	PIPE ELEVATION (NOT SHOWN)	66	PIPE ELEVATION (NOT SHOWN)
66	PIPE ELEVATION (NOT SHOWN)	67	PIPE ELEVATION (NOT SHOWN)
67	PIPE ELEVATION (NOT SHOWN)	68	PIPE ELEVATION (NOT SHOWN)
68	PIPE ELEVATION (NOT SHOWN)	69	PIPE ELEVATION (NOT SHOWN)
69	PIPE ELEVATION (NOT SHOWN)	70	PIPE ELEVATION (NOT SHOWN)
70	PIPE ELEVATION (NOT SHOWN)	71	PIPE ELEVATION (NOT SHOWN)
71	PIPE ELEVATION (NOT SHOWN)	72	PIPE ELEVATION (NOT SHOWN)
72	PIPE ELEVATION (NOT SHOWN)	73	PIPE ELEVATION (NOT SHOWN)
73	PIPE ELEVATION (NOT SHOWN)	74	PIPE ELEVATION (NOT SHOWN)
74	PIPE ELEVATION (NOT SHOWN)	75	PIPE ELEVATION (NOT SHOWN)
75	PIPE ELEVATION (NOT SHOWN)	76	PIPE ELEVATION (NOT SHOWN)
76	PIPE ELEVATION (NOT SHOWN)	77	PIPE ELEVATION (NOT SHOWN)
77	PIPE ELEVATION (NOT SHOWN)	78	PIPE ELEVATION (NOT SHOWN)
78	PIPE ELEVATION (NOT SHOWN)	79	PIPE ELEVATION (NOT SHOWN)
79	PIPE ELEVATION (NOT SHOWN)	80	PIPE ELEVATION (NOT SHOWN)
80	PIPE ELEVATION (NOT SHOWN)	81	PIPE ELEVATION (NOT SHOWN)
81	PIPE ELEVATION (NOT SHOWN)	82	PIPE ELEVATION (NOT SHOWN)
82	PIPE ELEVATION (NOT SHOWN)	83	PIPE ELEVATION (NOT SHOWN)
83	PIPE ELEVATION (NOT SHOWN)	84	PIPE ELEVATION (NOT SHOWN)
84	PIPE ELEVATION (NOT SHOWN)	85	PIPE ELEVATION (NOT SHOWN)
85	PIPE ELEVATION (NOT SHOWN)	86	PIPE ELEVATION (NOT SHOWN)
86	PIPE ELEVATION (NOT SHOWN)	87	PIPE ELEVATION (NOT SHOWN)
87	PIPE ELEVATION (NOT SHOWN)	88	PIPE ELEVATION (NOT SHOWN)
88	PIPE ELEVATION (NOT SHOWN)	89	PIPE ELEVATION (NOT SHOWN)
89	PIPE ELEVATION (NOT SHOWN)	90	PIPE ELEVATION (NOT SHOWN)
90	PIPE ELEVATION (NOT SHOWN)	91	PIPE ELEVATION (NOT SHOWN)
91	PIPE ELEVATION (NOT SHOWN)	92	PIPE ELEVATION (NOT SHOWN)
92	PIPE ELEVATION (NOT SHOWN)	93	PIPE ELEVATION (NOT SHOWN)
93	PIPE ELEVATION (NOT SHOWN)	94	PIPE ELEVATION (NOT SHOWN)
94	PIPE ELEVATION (NOT SHOWN)	95	PIPE ELEVATION (NOT SHOWN)
95	PIPE ELEVATION (NOT SHOWN)	96	PIPE ELEVATION (NOT SHOWN)
96	PIPE ELEVATION (NOT SHOWN)	97	PIPE ELEVATION (NOT SHOWN)
97	PIPE ELEVATION (NOT SHOWN)	98	PIPE ELEVATION (NOT SHOWN)
98	PIPE ELEVATION (NOT SHOWN)	99	PIPE ELEVATION (NOT SHOWN)
99	PIPE ELEVATION (NOT SHOWN)	100	PIPE ELEVATION (NOT SHOWN)

VA MENTAL HEALTH CENTER
 3801 MIRANDA AVE
 PALO ALTO, CA 94304

12-28-2012	AS-BUILT	Date: 07/01/11
11-06-2011	ARCH. CONSULTANT PLAN REVIEW	Contract With: OVERAA
REV. DATE	REVISION	BY Scale: 1/16" = 1'-0"
1	1	Drawn: T. HINTZ
2	2	Job No: 1211-636
3	3	Sheet: FP-1
4	4	Of 3 Sheets



MARQUEE
 FIRE PROTECTION
 710 W. Stadium Lane
 Sacramento, CA 95834-1130
 TEL 916.641-7997 / 707.642-7905
 FAX 916.641-0775
 CA. LIC. 570970 C-16

SEISMIC BRACING CALCULATIONS (PER NFPA 13)						
MARQUEE FIRE PROTECTION 710 WEST STADIUM LANE SACRAMENTO, CA 95834 PHONE: (916) 641-7997 FAX: (916) 641-0775 DESIGNER: T.HINTZ		DATE: 7-1-11 SHEET 1 OF 3 PROJECT: VA MENTAL HEALTH ADDRESS: 3801 MIRANDA AVE. PALO ALTO, CA 94304				
BRACE IDENTIFICATION No. C2 (REFERENCE PLANS) LATERAL BRACE: X LONGITUDINAL BRACE: X		SEISMIC BRACE ATTACHMENTS STRUCTURAL ATTACHMENT FITTING: MAKE: TOLCO MODEL: 980 LISTED LOAD RATING: 2765 lbs. ADJUSTED LOAD RATING PER 9.3.5.10.3: 1955 lbs. PIPE ATTACHMENT FITTING: MAKE: TOLCO MODEL: 1000 LISTED LOAD RATING: 2015 lbs. ADJUSTED LOAD RATING PER 9.3.5.10.3: 1425 lbs.				
BRACE INFORMATION LENGTH OF SWAY BRACE: 7'-0" DIAMETER OF SWAY BRACE: 1" TYPE OF BRACE: SCH. 40 ANGLE OF BRACE: 45° LEAST RADIUS OF GYRATION: 42 L/R VALUE: 200 MAXIMUM HORIZONTAL LOAD: 1310 lbs.		SEISMIC BRACE ASSEMBLY DETAIL CONCRETE BEAM 8" X 16" BOLT 1/2" NUT & WASHER SCH. 40 PIPE TOLCO PG. 980 SWAY BRACE FITTING SCH. 40 PIPE TOLCO PG. 1000 FAST CLAMP				
FASTENER INFORMATION ORIENTATION OF CONNECTING SURFACE: B FASTENER TYPE: WEDGE ANCHOR DIAMETER: 1/2" LENGTH: 3 1/2" MAXIMUM LOAD: 406 lbs.		SPRINKLER SYSTEM LOAD CALCULATION (F _{pw} =C _p W _p)				
PIPE DIAMETER	PIPE TYPE	PIPE LENGTHS	WEIGHT PER FT	TOTAL WEIGHT PER FT (W _p)	COEFFICIENT (C _p)	TOTAL WEIGHT (F _{pw})
1"	SCH. 40	55.88	2.05	114.55	.93	106.54
1 1/4"	SCH. 40	43.25	2.93	126.72	.93	117.85
1 1/2"	SCH. 40	0	3.61	0.00	.93	0.00
2"	SCH. 40	0	5.13	0.00	.93	0.00
2 1/2"	SCH. 10	18.58	5.89	109.44	.93	101.78
3"	SCH. 10	0	7.94	0.00	.93	0.00
4"	SCH. 10	0	11.78	0.00	.93	0.00
6"	SCH. 10	0	23.03	0.00	.93	0.00
TOTAL LOAD = WEIGHT OF WATER FILLED PIPE =				326.16		
TOTAL LOAD x 15% =				375.09		

SEISMIC BRACING CALCULATIONS (PER NFPA 13)						
MARQUEE FIRE PROTECTION 710 WEST STADIUM LANE SACRAMENTO, CA 95834 PHONE: (916) 641-7997 FAX: (916) 641-0775 DESIGNER: T. HINTZ		DATE: 7-1-11 SHEET 2 OF 3 PROJECT: VA MENTAL HEALTH ADDRESS: 3801 MIRANDA AVE. PALO ALTO, CA 94304				
BRACE IDENTIFICATION No. S1 (REFERENCE PLANS) LATERAL BRACE: X LONGITUDINAL BRACE: X		SEISMIC BRACE ATTACHMENTS STRUCTURAL ATTACHMENT FITTING: MAKE: TOLCO MODEL: 980 LISTED LOAD RATING: 2765 lbs. ADJUSTED LOAD RATING PER 9.3.5.10.3: 1955 lbs. PIPE ATTACHMENT FITTING: MAKE: TOLCO MODEL: 1000 LISTED LOAD RATING: 2015 lbs. ADJUSTED LOAD RATING PER 9.3.5.10.3: 1425 lbs.				
BRACE INFORMATION LENGTH OF SWAY BRACE: 7'-0" DIAMETER OF SWAY BRACE: 1" TYPE OF BRACE: SCH. 40 ANGLE OF BRACE: 45° LEAST RADIUS OF GYRATION: 42 L/R VALUE: 200 MAXIMUM HORIZONTAL LOAD: 1310 lbs.		SEISMIC BRACE ASSEMBLY DETAIL 				
FASTENER INFORMATION ORIENTATION OF CONNECTING SURFACE: B FASTENER TYPE: BOLT DIAMETER: 1/2" LENGTH: 3 1/2" MAXIMUM LOAD: 2050 lbs.						
SPRINKLER SYSTEM LOAD CALCULATION (F _{pw} =C _p W _p)						
PIPE DIAMETER	PIPE TYPE	PIPE LENGTHS	WEIGHT PER FT	TOTAL WEIGHT PER FT (W _p)	COEFFICIENT (C _p)	TOTAL WEIGHT (F _{pw})
1"	SCH. 40	0	2.05	0.00	.93	0.00
1 1/4"	SCH. 40	0	2.93	0.00	.93	0.00
1 1/2"	SCH. 40	0	3.61	0.00	.93	0.00
2"	SCH. 40	0	5.13	0.00	.93	0.00
2 1/2"	SCH. 10	0	5.89	0.00	.93	0.00
3"	SCH. 10	80.0	7.94	635.20	.93	590.74
4"	SCH. 10	0	11.78	0.00	.93	0.00
6"	SCH. 10	0	23.03	0.00	.93	0.00
TOTAL LOAD = WEIGHT OF WATER FILLED PIPE =				590.74		
TOTAL LOAD x 15% =				679.35		

SEISMIC BRACING CALCULATIONS (PER NFPA 13)						
MARQUEE FIRE PROTECTION 710 WEST STADIUM LANE SACRAMENTO, CA 95834 PHONE: (916) 641-7997 FAX: (916) 641-0775 DESIGNER: T. HINTZ		DATE: 7-1-11 SHEET 3 OF 3 PROJECT: VA MENTAL HEALTH ADDRESS: 3801 MIRANDA AVE. PALO ALTO, CA 94304				
BRACE IDENTIFICATION No. S1 (REFERENCE PLANS) LATERAL BRACE: X LONGITUDINAL BRACE: X		SEISMIC BRACE ATTACHMENTS STRUCTURAL ATTACHMENT FITTING: MAKE: TOLCO MODEL: 980 LISTED LOAD RATING: 2765 lbs. ADJUSTED LOAD RATING PER 9.3.5.10.3: 1955 lbs. PIPE ATTACHMENT FITTING: MAKE: TOLCO MODEL: 1000 LISTED LOAD RATING: 2015 lbs. ADJUSTED LOAD RATING PER 9.3.5.10.3: 1425 lbs.				
BRACE INFORMATION LENGTH OF SWAY BRACE: 7'-0" DIAMETER OF SWAY BRACE: 1" TYPE OF BRACE: SCH. 40 ANGLE OF BRACE: 45° LEAST RADIUS OF GYRATION: 42 L/R VALUE: 200 MAXIMUM HORIZONTAL LOAD: 1310 lbs.		SEISMIC BRACE ASSEMBLY DETAIL 				
FASTENER INFORMATION ORIENTATION OF CONNECTING SURFACE: B FASTENER TYPE: BOLT DIAMETER: 1/2" LENGTH: 3 1/2" MAXIMUM LOAD: 2050 lbs.						
SPRINKLER SYSTEM LOAD CALCULATION (Fpw=CpWp)						
PIPE DIAMETER	PIPE TYPE	PIPE LENGTHS	WEIGHT PER FT	TOTAL WEIGHT PER FT (Wp)	COEFFICIENT (Cp)	TOTAL WEIGHT (Fpw)
1"	SCH. 40	94.67	2.05	194.07	.93	180.49
1 1/4"	SCH. 40	70.0	2.93	205.10	.93	190.74
1 1/2"	SCH. 40	0	3.61	0.00	.93	0.00
2"	SCH. 40	0	5.13	0.00	.93	0.00
2 1/2"	SCH. 10	0	5.89	0.00	.93	0.00
3"	SCH. 10	30.67	7.94	243.52	.93	226.47
4"	SCH. 10	0	11.78	0.00	.93	0.00
6"	SCH. 10	0	23.03	0.00	.93	0.00
TOTAL LOAD = WEIGHT OF WATER FILLED PIPE =				597.70 lbs		
TOTAL LOAD x 15% =				687.36 lbs		

SEISMIC COEFFICIENT

2005 ASCE 7 Standard

VA MENTAL HEALTH - PALO ALTO
3801 Miranda Ave
Palo Alto, CA 94304

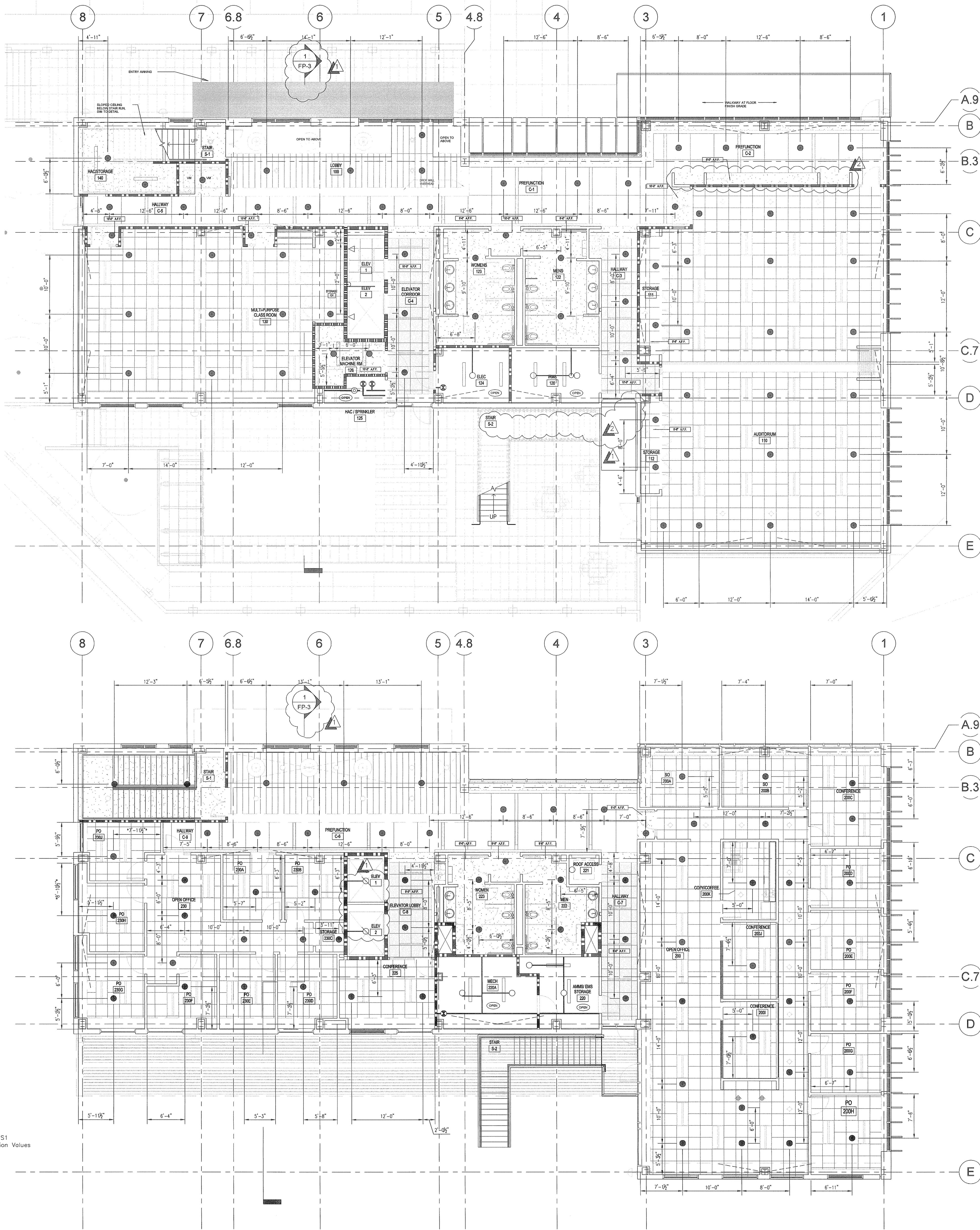
Per SS-001, note XII/4 Seismic Design

Spectral Response Accelerations S_s and S₁
S_s and S₁ = Mapped Spectral Acceleration Values
Site Class D

1.959 S_s
0.827 S₁

C_p Value per NFPA 13 Table 9.3.5.6.2

S_s C_p
2.00 0.93



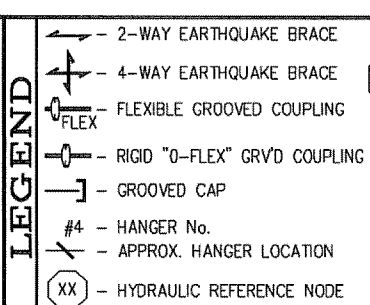
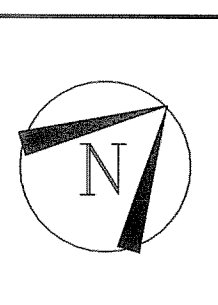
FIRST FLOOR REFLECTED CEILING PLAN

- PENDENT SPRINKLERS SHALL BE CENTER OR "QUARTER POINT" OF CEILING TILES.
- SPACING OF PENDENT SPRINKLERS IS FOR LIGHT HAZARD PER NFPA 13.
- PENDENT SPRINKLERS SHALL BE CHROME WITH WHITE MODEL E1 RECESSED ESCUTCHEONS.
- * INDICATES USE OF "SMALL ROOMS" RULE PER NFPA 13.
- - INDICATES USE OF #401 2-PIECE CANOPY DUE TO SURFACE MOUNTED LIGHT FIXTURES.
- ▬ - INDICATES RATED WALLS.
- ALL CEILINGS TO BE AT +13'-0" ABOVE FINISH FLOOR. (UNO)
- FOR PROTECTION OF AREAS NOT SHOWN SEE PIPING PLAN ON SHEET FP-3.

SECOND FLOOR REFLECTED CEILING PLAN

- PENDENT SPRINKLERS SHALL BE CENTER OR "QUARTER POINT" OF CEILING TILES.
- SPACING OF PENDENT SPRINKLERS IS FOR LIGHT HAZARD PER NFPA 13.
- PENDENT SPRINKLERS SHALL BE CHROME WITH WHITE MODEL E1 RECESSED ESCUTCHEONS.
- * INDICATES USE OF "SMALL ROOMS" RULE PER NFPA 13.
- - INDICATES USE OF #401 2-PIECE CANOPY DUE TO SURFACE MOUNTED LIGHT FIXTURES.
- ▬ - INDICATES RATED WALLS.
- ALL CEILINGS TO BE AT +10'-0" ABOVE FINISH FLOOR. (UNO)
- FOR PROTECTION OF AREAS NOT SHOWN SEE PIPING PLAN ON SHEET FP-3.

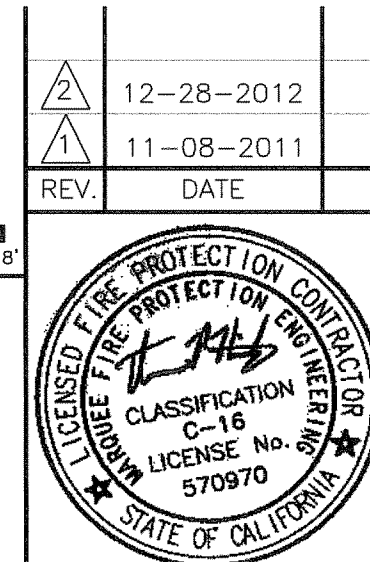
"AS-BUILT"



1 - 2-WAY CARTRIDGE BRACE	2 - SYSTEM ROOF	3 - GROOVE END END
4 - 4-WAY CARTRIDGE BRACE	4 - PIPE ELEVATION	4 - GROOVE + GROOVE
5 - FLEXIBLE GROINED COUPLING	5 - TOP OF BRACE	5 - GROOVE + GROOVE
6 - RIGID "X" JOINT COUPLING	6 - BOTTOM OF BRACE	6 - TOP OF BRACE
7 - GROINED CAP	7 - UNLESS NOTED OTHERWISE	7 - BOTTOM OF BRACE
8 - HANGER NO.	8 - ABOVE FINISH FLOOR	8 - OVERHEAD
9 - APPROX HANGER LOCATION	9 - BELOW TOP OF CEILING	9 - HANGER NO.
10 - CUT ON JOB	10 - SPRINKLER	10 - SPRINKLER
11 - THREAD ONE END	11 - NEW	11 - NEW

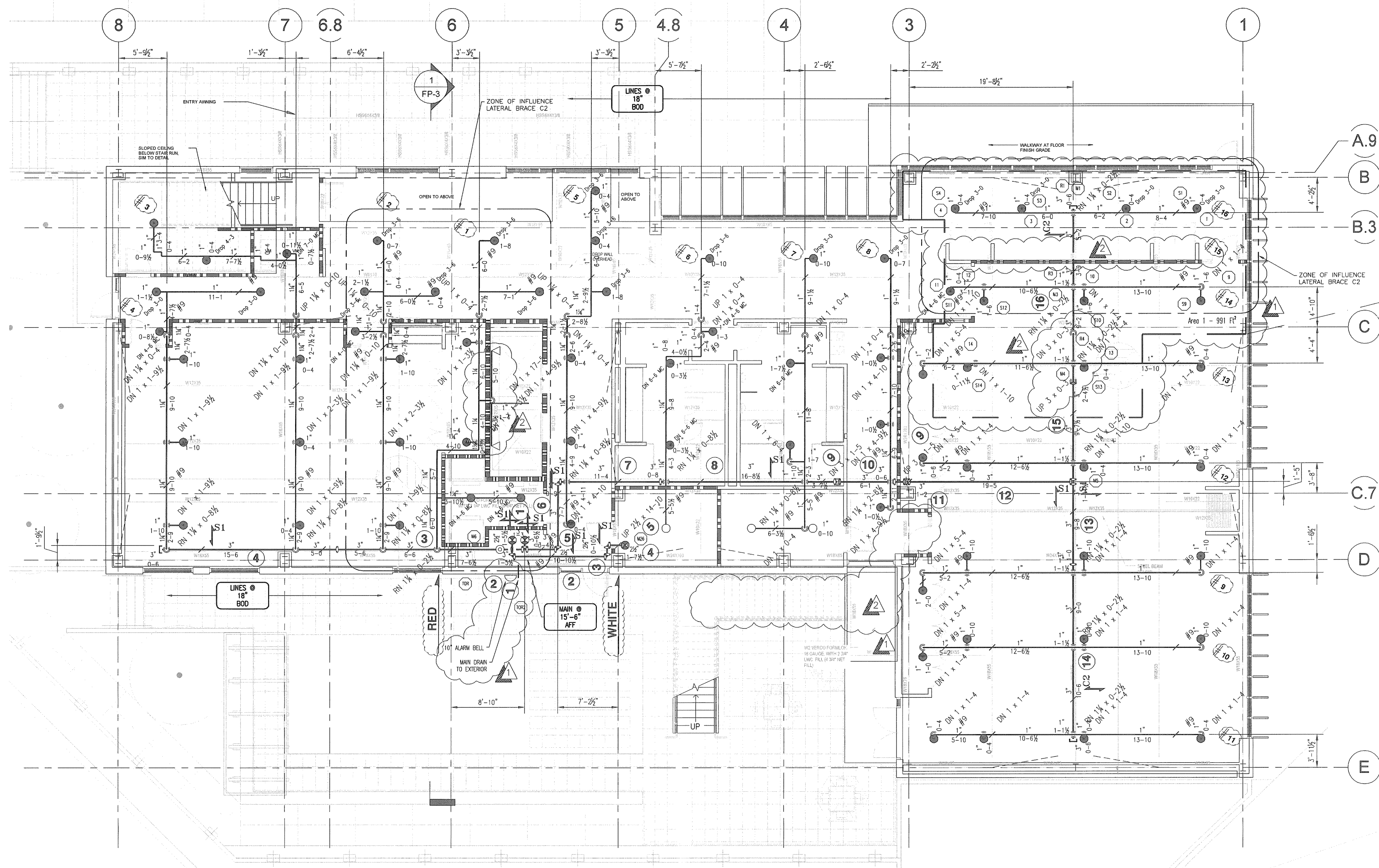
000 = TOTAL SPRINKLERS THIS SHEET

VA MENTAL HEALTH CENTER
3801 MIRANDA AVE
PALO ALTO, CA 94304

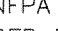


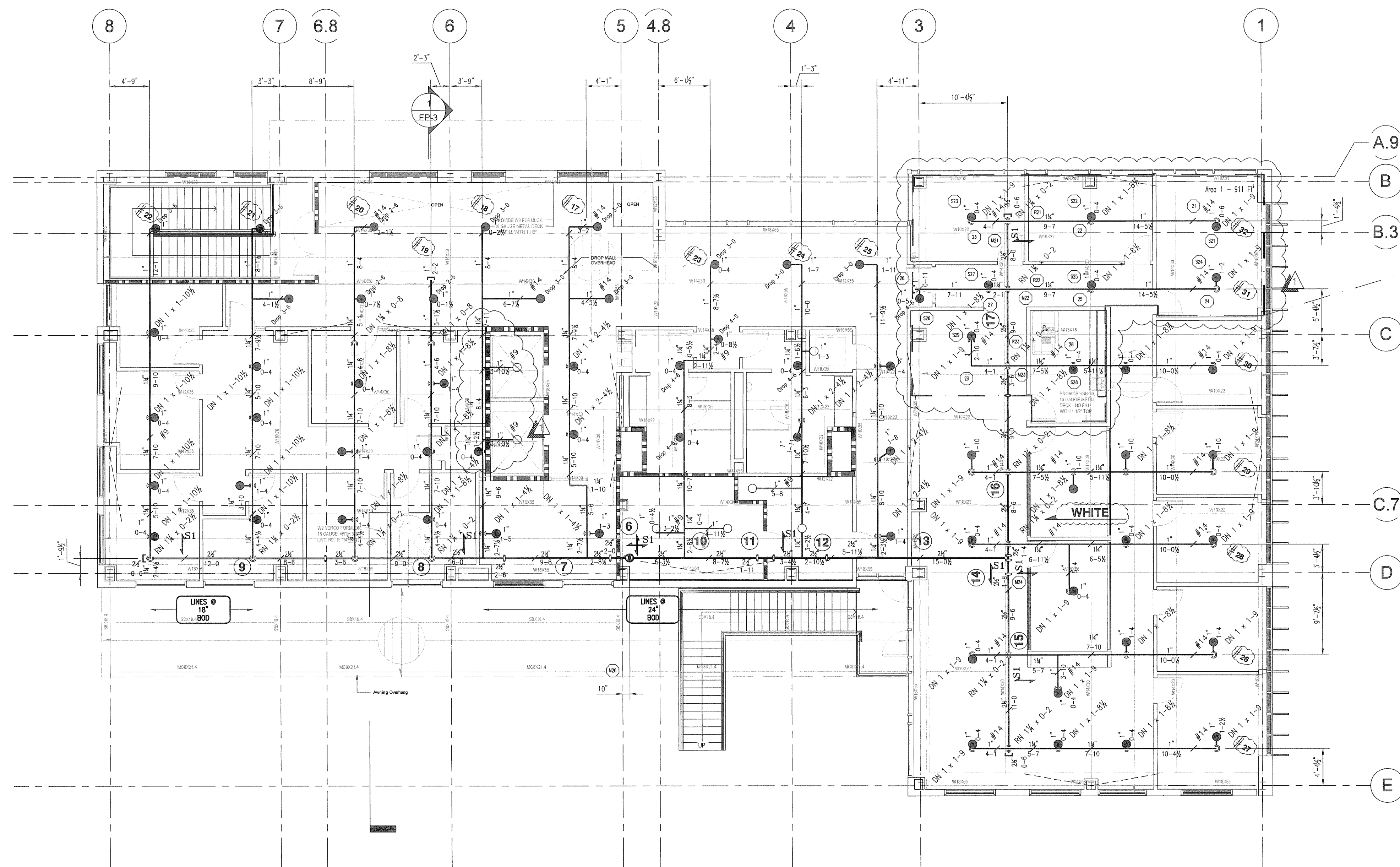
MARQUEE
FIRE PROTECTION
710 W. Stadium Lane
Sacramento, CA 95834-1130
TEL 916.641-7997 / 707.642-7905
FAX 916.641-0775
CA. LIC. 570970 C-16

Date: 07/01/11
Contract With: OVERAA
Scale: 1/8" = 1'-0"
Drawn: T. HINTZ
Job No: 1211-636
Sheet: FP-2
Of 3 Sheets




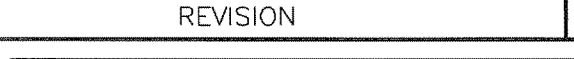

AREA ADJUSTMENT
(DESIGN AREA REDUCTION FOR Q.R. SPRINKLERS)
CEILING HEIGHT. . . . **+13'-0"**
 $\frac{-3(13'-0")}{2} + 55 = 35.5\%$
 $1500 \times 35.5\% = 532.5 \text{ Sq. Ft.}$
 $1500 - 532.5 = 967.5 \text{ Sq. Ft.}$

1. AT UNOBSTRUCTED CONSTRUCTION SPRINKLER DEFLECTOR SHALL BE BETWEEN 1" AND 12" BELOW THE BOTTOM OF THE CEILING.
2. AT OBSTRUCTED CONSTRUCTION SPRINKLER DEFLECTOR SHALL NOT EXCEED 6" BELOW THE BOTTOM OF THE FRAMING. (DEFLECTOR SHALL NOT EXCEED 22" BELOW THE DECK.)
3. MAIN PIPING SHALL HANG AT $\pm 15^{\circ}$ -0" AFF. (UNO)
LINE PIPING SHALL HANG AT 24" BOO. (UNO)
3. ALL HANGERS SHALL BE (#7) C-CLAMP W/ RETAINER STRAP (UNO). (SEE DETAILS)
4. DROPS TO SPRINKLERS SHALL BE 1" x 1'-6" WITH 1" x $\frac{1}{2}$ " R.C. (UNO)
5. MAIN PIPING SHALL BE SCHEDULE 10 STEEL (THINWALL) AND SHALL BE ROLL GROOVED PER NFPA 13. LINE PIPING SHALL BE SCHEDULE 40 STEEL (STANDARD) AND SHALL BE GROOVED OR THREADED PER NFPA 13. 



AREA ADJUSTMENT
(DESIGN AREA REDUCTION FOR Q.R. SPRINKLERS)
CEILING HEIGHT, . . . $+10'-0"$
 $\frac{-3(10'-0")}{2} + 55 = 40\%$
 $1500 \times 40\% = 600 \text{ Sq. Ft.}$
 $1500 - 600 = 900 \text{ Sq. Ft.}$

1. AT UNOBSTRUCTED CONSTRUCTION SPRINKLER DEFLECTOR SHALL BE BETWEEN 1" AND 12" BELOW THE BOTTOM OF THE CEILING.
2. AT OBSTRUCTED CONSTRUCTION SPRINKLER DEFLECTOR SHALL NOT EXCEED 6" BELOW THE BOTTOM OF THE DECKING. (DEFLECTOR SHALL NOT EXCEED 22" BELOW THE DECKING.)
3. MAIN PIPING SHALL HANG AT $\pm 12\frac{1}{2}$ " \pm AFF. (UNO)
LINE PIPING SHALL HANG AT 20" BOD. (UNO)
3. ALL HANGERS SHALL BE (#7) C-CLAMP W/ RETAINER STRAP (UNO). (SEE DETAILS)
4. DROPS TO SPRINKLERS SHALL BE 1" x 1"-6" WITH 1"x 1/2" R.C. (UNO)
5. MAIN PIPING SHALL BE SCHEDULE 10 STEEL (THINWALL) AND SHALL BE ROLL GROOVED PER NFPA 13. LINE PIPING SHALL BE SCHEDULE 40 STEEL (STANDARD) AND SHALL BE GROOVED OR THREADED PER NFPA 13. (UNO)

	12-28-2012	AS-BUILT	T.H.	Date: 07/01/11
	11-08-2011	ARCH. CONSULTANT PLAN REVIEW	T.H.	Contract With: OVERAA
REV.	DATE	REVISION	BY	Scale: 1/8" = 1'-0"
			<p>FIRE PROTECTION</p> <p>710 W. Stadium Lane Sacramento, CA 95834-1130 TEL 916. 641-7897 / 707. 642-7905 FAX 916. 641-0775 CA. LIC. 570970 C-16</p>	Drawn: T. HINTZ
				Job No: 12111-636
				Sheet: FP-3
				Of 3 Sheets