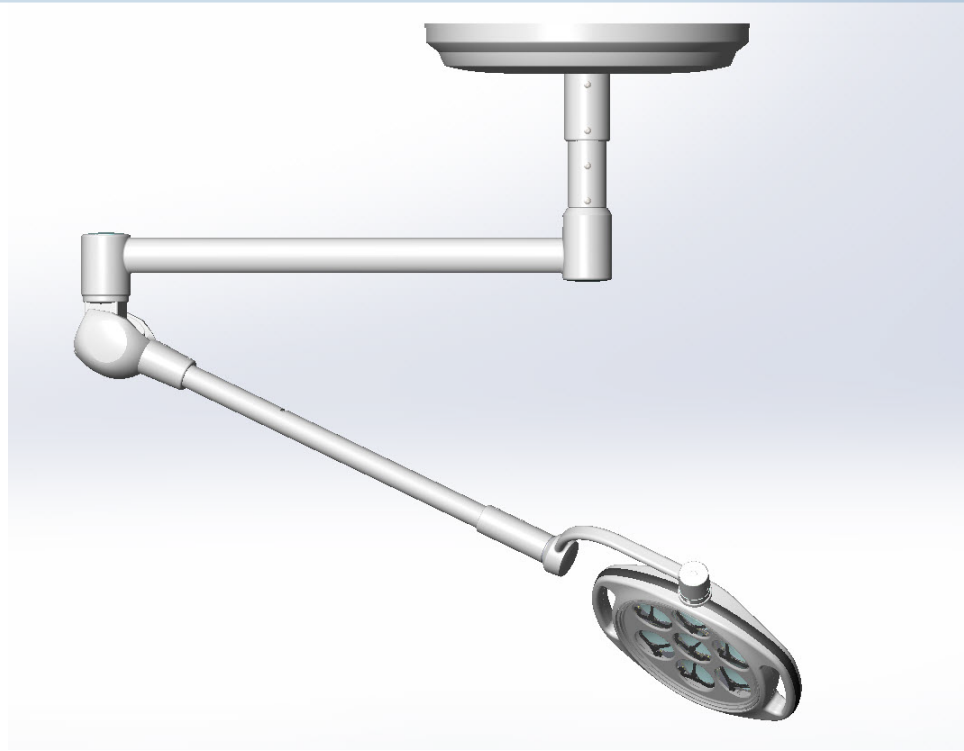


**SPECTRA AUT1 LED EXAMINATION LIGHT CEILING MOUNTED****Introduction**

The Spectra AUT1 series LED examination light was developed to bring excellent, color correct light to various departments that require examination lighting. The performance is matched by its low cost of ownership and durability. Applications include emergency departments, labor and delivery, imaging, and general examination.

**Standard Features**

- Sealed lighthead provides smooth surface for clean wipedown between cases
- Lighthead mounted intensity control allows one touch adjustment of light intensity level
- Spring balanced articulating arm offers easy positioning and stability
- Cool temperature LEDs keep environment from becoming uncomfortably hot
- Total reach of 71" (1803mm)
- 360° rotation of arms; 355° pitch and 360° roll rotation of lighthead

**Accessories**

- Optional sterilizable handle (B4-242-04)
- Disposable sterilizable handle covers available

**Architectural Specification**

Lighting system should consist of a 12" (305mm) LED exam light. Includes polymer lighthead with 7 high efficiency LEDs (51,200 lux), VSRD optics, and a minimum life of 40,000 hours. Ceiling mounted with a total reach of 71" (1803mm). 360° rotation of arms; 355° pitch and 360° roll rotation of lighthead. Light should be Skytron Spectra AUT1C.

**Technical Data**

**Electrical:** 100-240 VAC, 50/60 Hz, single phase, 0.4 amps, 45 VA

**Intensity:** 51,200 lux (4,740 fc) at 1 meter

**Light Field Diameter at 1 meter:** 6" (152mm)

**Color Temperature:** 4317K

**CRI:** 96

**LED Life:** 40,000 hours

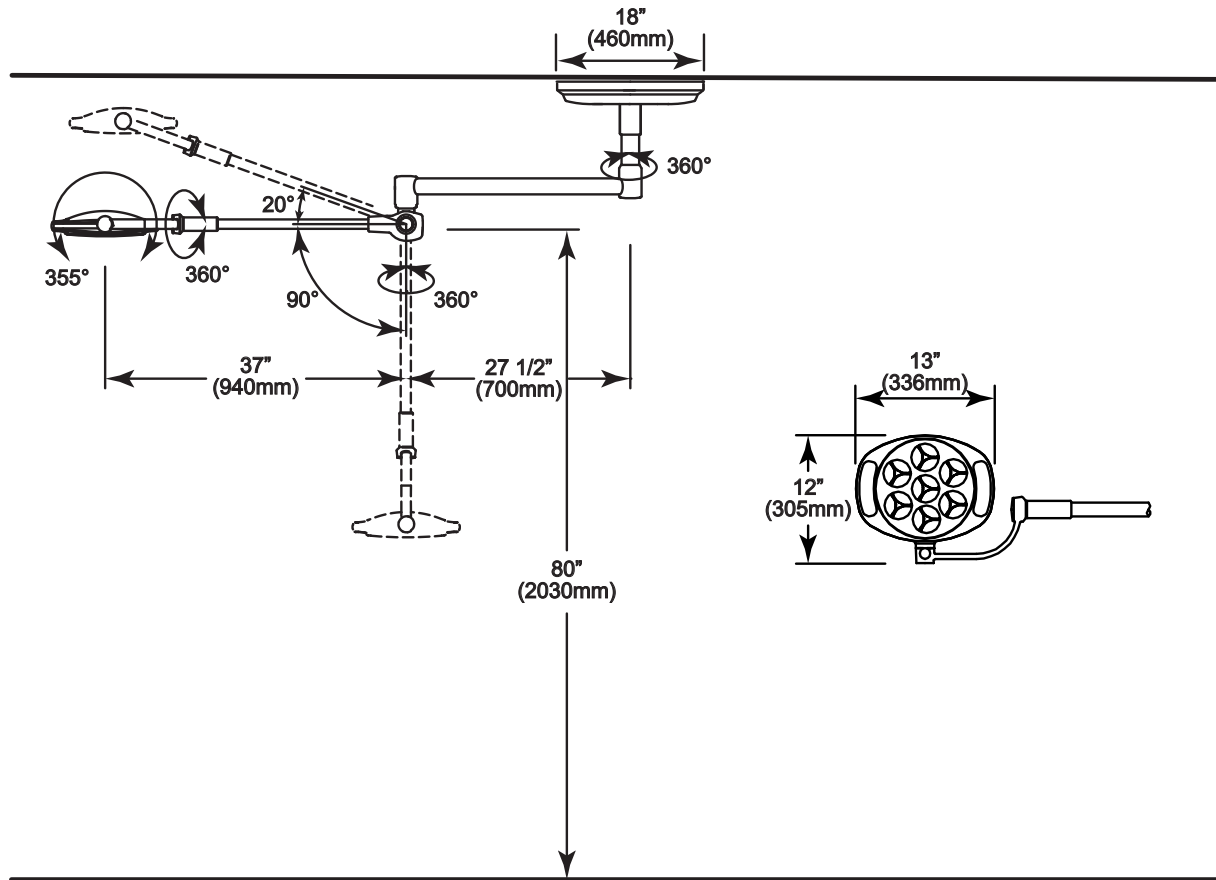
**Total Reach:** 71" (1803mm)

**Fixture Weight:** 35.83 lbs (16.25 kg)

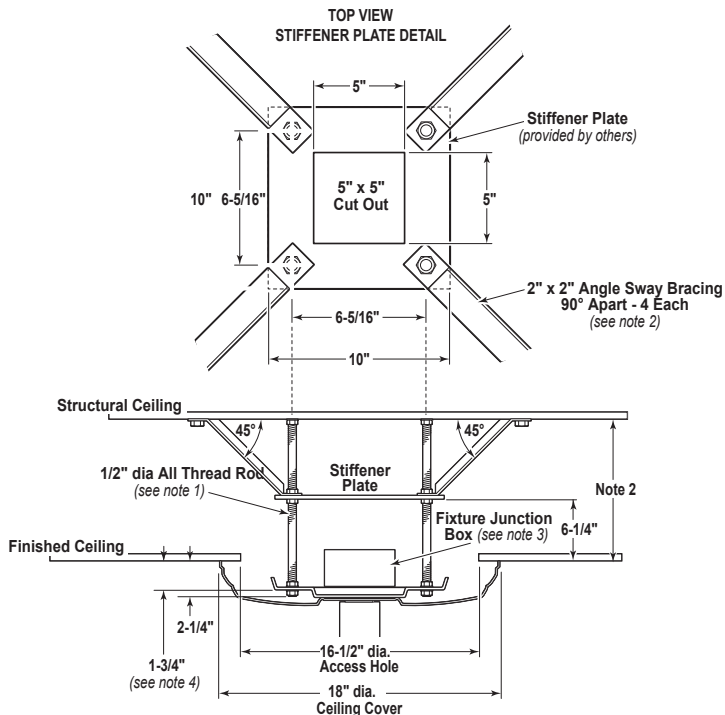
**Moment Load:** 88.2 ft-lbs (119.6 Nm)

**Minimum Ceiling Height:** 98" (2489mm)

**Maximum Ceiling Height:** 124" (3150mm)



### Standard Mounting Structure



### Notes

1. 1/2" support rods located for total support of light, all labor and materials for mounting structure fabrication supplied by General Contractor. Fixture to be level at mounting and positioned as shown to assure proper fit of ceiling cover.
2. For support rod length over 48", two stiffener plates and two sets of sway bracing may be required (contact Skytron representative). For support rod lengths of 12" or less, sway braces may be omitted.
3. All conduit, wiring, and other electrical materials as well as installation labor for such materials associated with the installation of the Skytron examination light to be provided by Electrical Contractor. All installations of Skytron surgical lights should be under the direct supervision of a Skytron representative. All wiring to be in accordance with local codes. Properly circuit protected 100-240 VAC, 50/60 Hz power supply to be provided by facility.
4. Fixture to be level at mounting and positioned as shown to assure proper fit of ceiling cover.
5. CONTRACTOR HAS FINAL RESPONSIBILITY for the strength and stability of the Mounting Structure.