

ROOM FINISH SCHEDULE											
ROOM NO.	ROOM NAME	FLOOR	BASE	WALLS				CEILING		COMMENTS	
				NORTH	EAST	SOUTH	WEST	FINISH	HEIGHT		
FIRST FLOOR											
1H1	HALLWAY	VCT PATTERN	RB-2	P-3	P-3	P-3	P-3	AT-1	10' - 6"	3	
1H2	HALLWAY	VCT PATTERN	RB-2	P-3	P-3	P-3	P-3	AT-1	9' - 0"	3	
1H3	HALLWAY	VCT PATTERN	RB-2	P-3	P-3	P-3	P-3	AT-1	9' - 0"	3	
1H4	HALLWAY	VCT PATTERN	RB-2	P-3	P-3	P-3	P-3	AT-1	9' - 0"	3	
1H5	HALLWAY	VCT PATTERN	RB-2	P-3	P-3	P-3	P-3	AT-1	9' - 0"	3	
1R17a	STO	ERF-1	EF- 1	P-3	P-3	P-3	P-3	P-5	9' - 0"		EXISTING
1V01	STORAGE	ERF-1	ERF-1	P-3	P-3	P-3	P-3	P-5	9' - 0"		
1V02	VESTIBULE	VCT PATTERN	RB-2	P-3	P-3	P-3	P-3	AT-1	9' - 4"		
1V03	WOMEN LR.	PT-1	PTB- 1	P-3	PWT- 1	P-3	P-3	P-5	9' - 0"	1	
1V03a	WOMEN RR	PT-1	PTB- 1	PWT- 1	PWT- 1	PWT- 1	PWT- 1	P-5	9' - 0"		PT-2 AND PT-3 AT SHOWER FLOOR
1V04	MEN LR.	PT-1	PTB- 1	P-3	P-3	P-3	PWT- 1	P-5	9' - 0"	1	
1V04a	MEN RR	PT-1	PTB- 1	PWT- 1	PWT- 1	PWT- 1	PWT- 1	P-5	9' - 0"		PT-2 AND PT-3 AT SHOWER FLOOR
1V05	GOWNING AREA	VCT PATTERN	RB-2	P-3	P-3	P-3	P-3	AT-1	9' - 4"	3	
1V06	MICE COLONY	ERF-1	ERF-1	P-2	P-2	P-2	P-2	P-5	9' - 0"		
1V07	HAC	PT-2	PTB- 2	P-3	P-3	P-3	P-3	P-5	10' - 0"		
1V08	RAT COLONY	ERF-1	ERF-1	P-2	P-2	P-2	P-2	P-5	9' - 0"		
1V09	EQUIPMENT STORAGE	ERF-1	ERF-1	P-3	P-3	P-3	P-3	P-5	10' - 0"		
1V10	VESTIBULE	ERF-1	ERF-1	P-3	P-3	P-3	P-3	P-5	9' - 0"		
1V10a	ABSL-2 HOLDING & PROCEDURE AREA	ERF-1	ERF-1	P-2	P-2	P-2	P-2	P-5	9' - 0"		
1V10b	ABSL-2 HOLDING AREA	ERF-1	ERF-1	P-2	P-2	P-2	P-2	P-5	9' - 0"		
1V11	MED. SUP. STORAGE	ERF-1	ERF-1	P-3	P-3	P-3	P-3	P-5	9' - 0"		
1V12	NECROPSY	ERF-1	ERF-1	P-3	P-3	P-3	P-3	P-5	9' - 0"		
1V13	PROCEDURE ROOM	ERF-1	ERF-1	P-3	P-3	P-3	P-3	P-5	9' - 0"		
1V14	PROCEDURE ROOM	ERF-1	ERF-1	P-3	P-3	P-3	P-3	P-5	9' - 0"		
1V15	STO	VCT- 6	RB-2	P-3	P-3	P-3	P-3	AT-1	9' - 0"		
1V16	PROCEDURE ROOM	ERF-1	ERF-1	P-3	P-3	P-3	P-3	P-5	9' - 0"		
1V17	PROCEDURE ROOM	ERF-1	ERF-1	P-3	P-3	P-3	P-3	P-5	9' - 0"		
1V18	PROCEDURE ROOM	ERF-1	ERF-1	P-3	P-3	P-3	P-3	P-5	9' - 0"		
1V19	PALLET STORAGE	ERF-1	ERF-1	P-2	P-2	P-2	P-2	P-5	9' - 0"		
1V20	CLEAN SIDE	ERF-1	ERF-1	P-2	P-2	P-2	P-2	P-5	12' - 0"		
1V20a	AUTOCLAVE	Concrete - Floor	None	None	None	None	None	None	9' - 0"		
1V20b	CAGE WASHER	Concrete - Floor	None	None	None	None	None	None	9' - 0"		
1V21	FEED & BEDDING	ERF-1	ERF-1	P-3	P-3	P-3	P-3	P-5	9' - 0"		
1V22	GOWNING AREA	VCT- 6	RB-2	P-3	P-3	P-3	P-3	P-5	9' - 0"		
1V23	TECH OFFICE	VCT-1	RB-2	P-4	P-4	P-4	P-4	AT-1	9' - 0"		
1V23a	VETERINARIAN OFFICE	VCT-1	RB-2	P-4	P-4	P-4	P-4	AT-1	9' - 0"		
1V24	RECEIVING AREA	SC-1	RB-2	P-3	P-3	P-3	P-3	P-5	OPEN TO STRUCTURE		
1V25	SOILED SIDE	ERF-1	ERF-1	P-2	P-2	P-2	P-2	P-5	12' - 0"		
1V25a	STO	ERF-1	ERF-1	P-2	P-2	P-2	P-2	P-5	8' - 0"		
1V26	ELECT.	SC-1	RB-2	P-3	P-3	P-3	P-3	P-5	9' - 0"		
1V27	TEMP. HOLD.	SC-1	RB-2	P-3	P-3	P-3	P-3	P-5	OPEN TO STRUCTURE		
1V28	IT / TELECOMM	SC-1	RB-2	P-3	P-3	P-3	P-3	P-5	OPEN TO STRUCTURE		
1V29	WASTE STORAGE	ERF-1	ERF-1	P-3	WP- 5	WP- 5	P-3	P-5	9' - 0"		
1V30	RADIO. WASTE	ERF-1	ERF-1	P-3	WP- 5	WP- 5	P-3	P-5	9' - 0"		
1V31	TANK STOR.	SC-1	RB-2	P-3	P-3	P-3	P-3	P-5	9' - 0"		
1V32	ELEV.M.R.	SC-1	RB-2	P-3	P-3	P-3	P-3	P-5	9' - 0"		
ELEV - 3	ELEV. - 3	Concrete - Floor	None	None	None	None	None	None	OPEN TO STRUCTURE		
STAIR - 3	STAIR - 3	RF-1	RB-2	P-3	P-3	P-3	P-3	P-5	OPEN TO STRUCTURE		RUBBER TREAD AND NOSING RT-1
STAIR - 4	STAIR - 4	RF-1	RB-1	P-3	P-3	P-3	P-3	P-5	OPEN TO STRUCTURE		RUBBER TREAD AND NOSING RT-1
SECOND FLOOR											
2C2.1	HALLWAY	VCT PATTERN	RB-1	P-1	P-1	P-1	P-1	AT-1	9' - 4"	3	
2H1	HALLWAY	VCT PATTERN	RB-1	P-1	P-1	P-1	P-1	AT-1	9' - 4"	3	
2H2	HALLWAY	VCT PATTERN	RB-1	P-1	P-1	P-1	P-1	AT-1	9' - 4"	3	
2R38	LAB	VCT-1	RB-1	P-2	P-2	P-2	P-2	AT-2	9' - 0"		
2R39	LAB	VCT-1	RB-1	P-2	P-2	P-2	P-2	AT-2	9' - 0"		
2R40	CORE EQUIP.	VSF-1	VSF-1	P-2	P-2	P-2	P-2	AT-2	10' - 0"		
2R41	LAB #10	VSF-1	VSF-1	P-2	P-2	P-2	P-2	AT-2	10' - 0"		
2R41a	TISSUE CULTURE ROOM	VSF-1	VSF-1	P-2	P-2	P-2	P-2	AT-2	10' - 0"		
2R42	MECHANICAL ROOM	Concrete - Floor	RB-1	P-2	P-2	P-2	P-2	P-5	OPEN TO STRUCTURE	2	
2R42a	AIR PLENUM	Concrete - Floor	RB-1	P-1	P-1	P-1	P-1	P-5	OPEN TO STRUCTURE	2	
2R43	LAB #11	VSF-1	VSF-1	P-2	P-2	P-2	P-2	AT-2	10' - 0"		
2R43a	TISSUE CULTURE ROOM	VSF-1	VSF-1	P-2	P-2	P-2	P-2	AT-2	10' - 0"		
2R44	COLD PROCEDURE ROOM	Concrete - Floor	RB-1	P-2	P-2	P-2	P-2	P-5	10' - 0"		
2R45	CORE EQUIPMENT	VSF-1	VSF-1	P-2	P-2	P-2	P-2	AT-2	10' - 0"		
2R46	HAC	PT-2	PTB- 2	P-3	P-3	P-3	P-3	P-5	10' - 0"		
2R47	ELECTRON MICROSCOPE SUITE, PREPARATION ROOM /LAB	VSF-1	VSF-1	P-2	P-2	P-2	P-2	AT-2	10' - 0"		
2R47a	SCOPE ROOM SUPPORT	VSF-1	VSF-1	P-2	P-2	P-2	P-2	AT-2	10' - 0"		
2R47b	ELECTRON MICROSCOPE SUITE, SCOPE ROOM	VSF-1	VSF-1	P-2	P-2	P-2	P-2	AT-2	10' - 0"		
2R47c	ELECTRON MICROSCOPE SUITE, MICROTOME ALCOVE	VSF-1	VSF-1	P-2	P-2	P-2	P-2	AT-2	10' - 0"		
2R48	ELECTRICAL ROOM	VCT-1	RB-1	P-2	P-2	P-2	P-2	P-5	10' - 0"		
2R49	IT / TELECOMM	VCT-1	RB-1	P-2	P-2	P-2	P-2	P-5	OPEN TO STRUCTURE	2	

BASIS OF DESIGN

1. PRODUCT DESIGNATIONS ARE INCLUDED SOLELY TO ESTABLISH THE INTENDED "LEVEL OF QUALITY" REQUIRED, AND IS NOT INTENDED TO ESTABLISH PROPRIETARY PRODUCT REQUIREMENTS.

NOTES:

1. ANY SPECIFIC SCHEDULED PRODUCT BELOW IS SUBJECT TO "OR EQUAL" SUBSTITUTION REQUEST, BUT IS ALSO SUBJECT TO COMPLIANCE WITH REQUIREMENTS, REVIEW AND APPROVAL OF DIRECTOR AND ARCHITECT

\*SUBSTITUTION REQUEST MUST BE SUBMITTED AND APPROVED BY VA PRIOR TO BID.

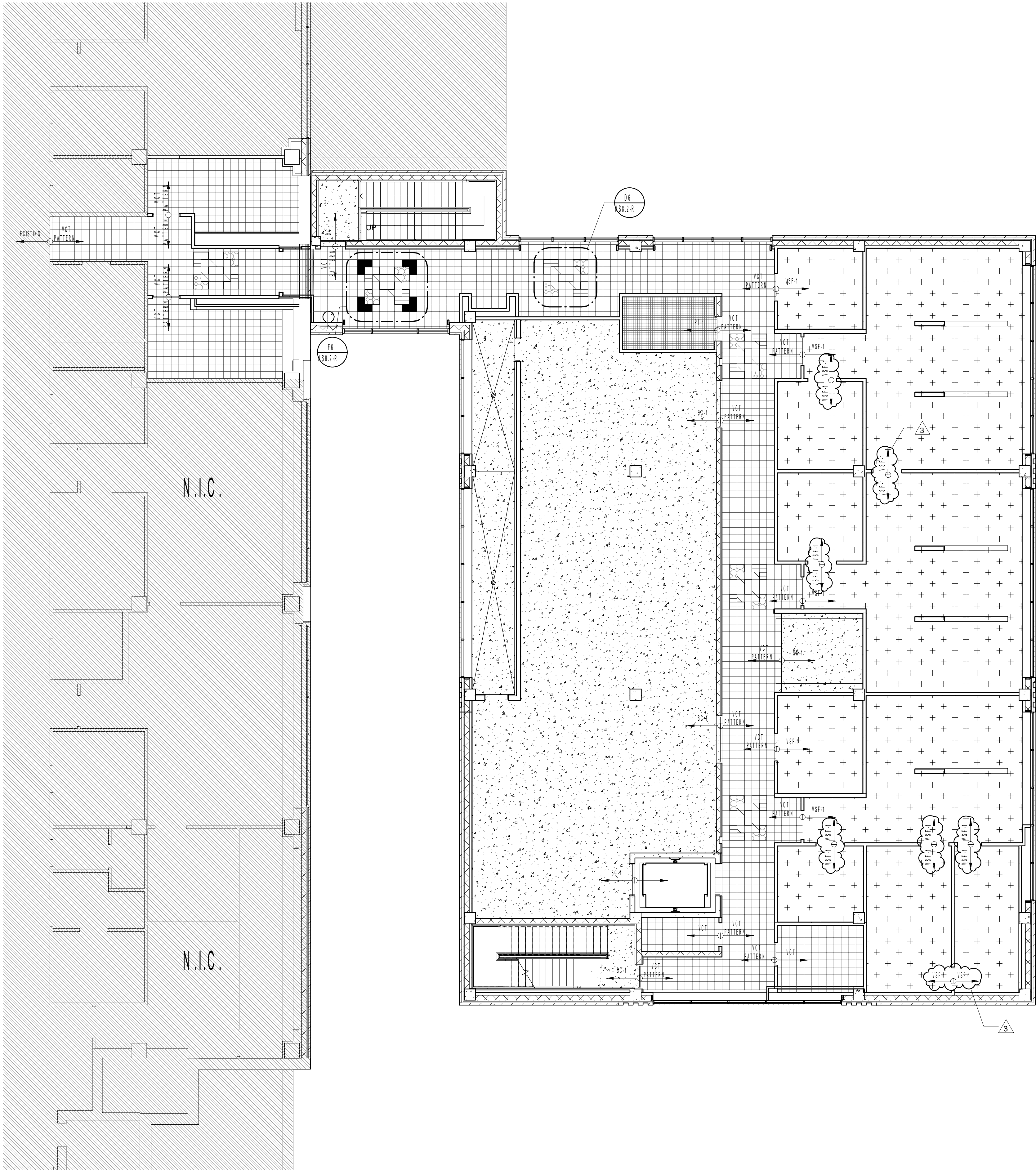
MATERIAL SCHEDULE LEGEND

DESIGNATION	MANUFACTURER	DESCRIPTION: STYLE, COLOR, SIZE	LOCATION(S)(COMMENT(S))	
FLOORING MATERIALS:				
CARPET:				
CP-1	ATLAS CARPET MILLS	STUDIO COLLECTION; COMPOSITE CP01 AERIAL VIEW	BROADLOOM	
VINYL COMPOSITION TILE:				
VCT-1	MANNINGTON COMMERCIAL	ESSENTIALS 121 WARM BEIGE 12"X12"	MAIN FIELD	
VCT-2	MANNINGTON COMMERCIAL	ESSENTIALS 143 FLAX 12"X12"	ACCENT	
VCT-3	MANNINGTON COMMERCIAL	ESSENTIALS 259 OLIVIA 12"X12"	ACCENT	
VCT-4	MANNINGTON COMMERCIAL	ESSENTIALS 265 FOREST 12"X12"	ACCENT	
VCT-5	MANNINGTON COMMERCIAL	ESSENTIALS 238 BROWN EARTH	ACCENT	
VCT-6	MANNINGTON COMMERCIAL	ESSENTIALS 133 ALMONDINE	MAIN FIELD	
VCT-7	MANNINGTON COMMERCIAL	ESSENTIALS 200 NAVY	ACCENT	
VINYL SHEET FLOORING:				
VSF-1	ARMSTRONG POSSIBILITIES	PETIT POINT 88213 WHITE SAND	4" INTEGRAL BASE	
EPOXY RESIN FLOOR:				
ERF-1	SKA FLOOR INDUSTRIAL	SKAFLOOR QUARTZITE 8000 SANDSTONE TOP COAT: SF215 GLOSS	INTEGRAL BASE	
PORCELAIN TILE:				
PT-1	DALTILE	CONTINENTAL SLATE PERSIAN GOLD 12" x 12"	MAIN FIELD	
PT-2	DALTILE	KEYSTONES D335 ALMOND 2" x 2"		
PT-3	DALTILE	KEYSTONES D407 CINNAMON RANGE 2" x 2"		
BASE:				
RB-1	JOHNSONITE - RUBBER	85 BURGUNDY	4" HIGH	
RB-2	JOHNSONITE - RUBBER	280 SHORELINE	4" HIGH	
PTB-1	DALTILE	CONTINENTAL SLATE PERSIAN GOLD 8" x 12"	ACCENT	
PTB-2	DALTILE	KEYSTONES 2" x 2" WB-88 ALMONDINE		
RT-1	JOHNSONITE - RUBBER TREAD	85 BURGUNDY		
RT-2	JOHNSONITE - RUBBER TREAD	280 SHORELINE		
SEALED CONCRETE:				
SC-1	ARIZONA POLYMER FLOORING	POLYURETHANE 350 HIGH PERFORMANCE CONCRETE SEALER		
WALL FINISHES:				
PAINT:				
P-1	SHERWIN WILLIAMS	SW 6143 BASKET BEIGE	DOOR FRAMES TO MATCH EXISTING	
P-2	SHERWIN WILLIAMS	SW 6126 NAVAJO WHITE		
P-3	SHERWIN WILLIAMS	SW 7042 SHOJUN WHITE		
P-4	SHERWIN WILLIAMS	SW 6150 UNIVERSAL KHAKI		
P-6	SHERWIN WILLIAMS	SW 6237 DARK NIGHT		
PORCELAIN WALLTILE:				
PWT-1	DALTILE	CONTINENTAL SLATE CS54 PERSIAN GOLD 12" x 18"	STAGGERED	
PWT-2	DALTILE	CONTINENTAL SLATE CS54 PERSIAN GOLD BLOCK RANDOM MOSAIC		
WALL PROTECTOR:				
WP-1	CS ACROVYN HAND RAIL	ECR-325 - STAINLESS STEEL	DOOR FRAMES TO MATCH EXISTING	
WP-2	CS ACROVYN CORNER GUARD	VA-400N PARTIAL HEIGHT 103 BEIGE		
WP-3	CS ACROVYN CRASH RAIL	SCR-30N 393 WISSON WHITE		
WP-4	CS ACROVYN CRASH RAIL	SCR-30N 103 BEIGE		
WP-5	MARLTITE - STANDARD FRP	PEBBLED SURFACE - P100 WHITE		
BRICK:				
BR-1	SIoux CITY BRICK	MOUNTAIN SHADOW VELOUR	ACCENT FIELD	
BR-2	ACME	BLENDE 188 DOE SKIN		
GROUT:				
G-1	LATICRETE	39 MUSHROOM		
MORTAR:				
M-1	MATCH EXISTING AT BUILDING 205 (NO.)	38 SANDSTONE)		
MILLWORK FINISHES:				
PLASTIC LAMINATE:				
HPDL-1	WILSONART	4879-30 STEEL MESH	LAB LOWER CABINETS	
HPDL-2	WILSONART	10776-60 KENSINGTON MAPLE		
HPDL-3	PIONITE	BEIGE LINEN AT301		
COUNTERTOPS:				
SS-1	THERMOSCIENTIFIC EPOXYN PRODUCTS	06 BLACK	LAB COUNTERTOPS	
SS-2	THERMOSCIENTIFIC EPOXYN PRODUCTS	18 SAND		
SS-3	FORMICA	CREMA TERRAZZO 744		
PL-1	HIGH DENSITY POLYETHYLENE RESIN	CAPUCCINO (PROVIDE SELECTION SAMPLES)		
STAIR LANDING, TREAD AND RISERS:				
RF-1	JOHNSONITE - RUBBER FLOORING	DIAMOND (C) PATTERN, #49 BEIGE 24X24	LANDING TREADS AND RISERS	
RT-1	JOHNSONITE - RUBBER TREADS AND RISERS	(C) HEAVY DUTY DIAMOND #49 BEIGE		
CEILING MATERIALS:				
SUSPENDED ACOUSTICAL PANEL:				
AT-1	ARMSTRONG ACOUSTICAL TILE	24"x24" ARMATUFF MEDIUM TEXTURE, WHITE; SQUARE LAY-IN		
AT-2	ARMSTRONG ACOUSTICAL TILE	24"x24" CERAMAGUARD, WHITE; SQUARE LAY-IN		
GYPSUM BOARD (PAINT COLOR):				
P-5	SHERWIN WILLIAMS	SW 7006 EXTRA WHITE		
EXPOSED STRUCTURE (PAINT COLOR):				
P-5	SHERWIN WILLIAMS	SW 7006 EXTRA WHITE		

REMARKS:

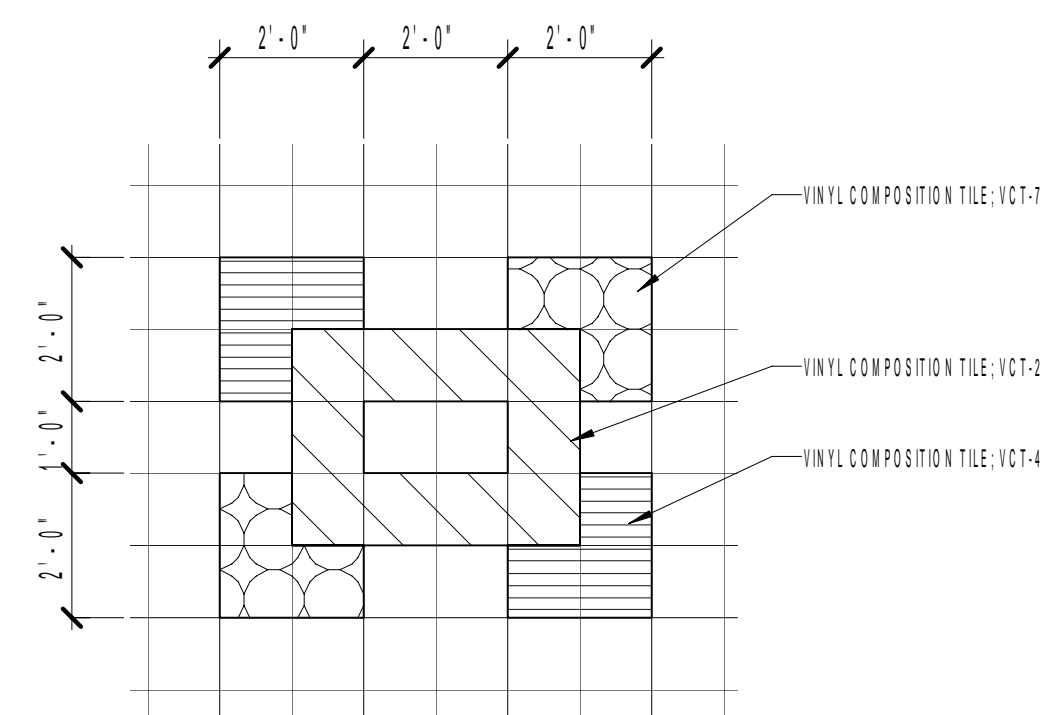
1. REFER TO ELEVATIONS ON SHEET ASS.1 FOR ACCENT WALL TILE PATTERN.
2. EXPOSED STRUCTURE TO BE PAINTED AS SCHEDULED.
3. REFER TO FLOOR FINISH SHEET(S), SERIES AB, FOR FLOOR FINISH PATTERN(S).
4. CEILING HEIGHT VARIES. REFER TO REFLECTED CEILING PLANS FOR LOCATIONS.
5. GUARDRAILS/HANDRAILS AND STEEL ELEMENTS, INCLUDING COLUMN(S) UNDER STAIRS TO RECEIVE PAINT AS SCHEDULED.
6. REFER TO SPECIFICATIONS FOR PAINT FINISH AND GLOSS LEVEL.

Revision 3		05/19/2014		CONSULTANTS		ARCHITECT		Drawing Title		Project Title		Project Number		Office of Construction and Facilities Management	
Revisions:		Date				WEST EAST DESIGN GROUP		ROOM FINISH SCHEDULE		RESEARCH ADDITION TO BUILDING 205		674-279		Office of Construction and Facilities Management	
						200 East Grayson, Suite 207 San Antonio, TX 78215				Location		205		Department of Veterans Affairs	
						210.530.0755				Date		May 19, 2014		Checked	
						WWW.WESTEASTDESIGN.COM				Approved Project Director				DRAWN	
						These documents can not be copied or reproduced without written consent from WestEast Design Group								EHP	
														Dwg. 31 of 41	

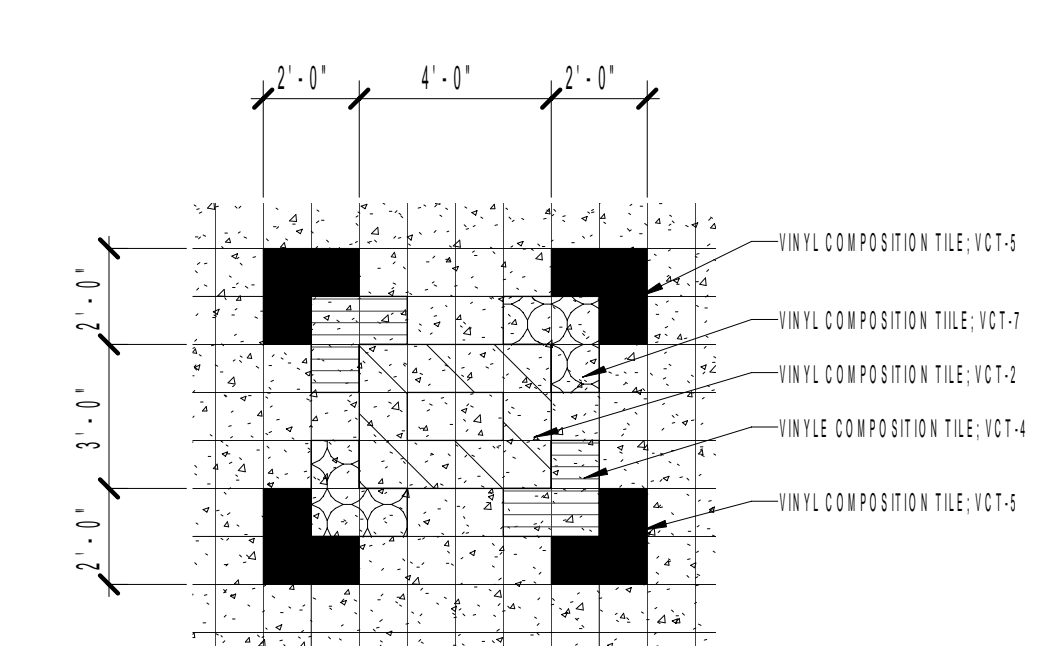


**FLOOR FINISH LEGEND:**

	SEALED CONCRETE FLOOR; SC-1
	PORCELAIN TILE; PT-1
	PORCELAIN TILE BLEND; PT-2 (80%) PT-3 (20%)
	VINYL COMPOSITION TILE; VCT-1 (2ND FLOOR) VCT-6 (1ST FLOOR)
	VINYL COMPOSITION TILE; VCT-2
	VINYL COMPOSITION TILE; VCT-3
	VINYL COMPOSITION TILE; VCT-4
	VINYL COMPOSITION TILE; VCT-5
	VINYL COMPOSITION TILE; VCT-7
	VINYL SHEET FLOORING; VSF-1
	EPXY FLOOR; ERF-1



**D6 TYP. PATTERN FLOOR TILE**  
SCALE: 3/8" = 1'-0"



**F6 PATTERN FLOOR TILE**  
SCALE: 1/4" = 1'-0"

	FLOOR TRANSITION LEGEND
VCT TO VCT FLOORING	USE TRANSITION STRIP
VCT TO EPXY FLOORING	USE MARBLE THRESHOLD
VCT TO PORCELAIN TILE	USE TRANSITION STRIP
VCT TO SEALED CONCRETE	USE TRANSITION STRIP
VCT TO SHEET VINYL FLOORING	USE TRANSITION STRIP
VCT TO CARPET TRANSITION	USE TRANSITION STRIP
VCT TO CONCRETE	USE TRANSITION STRIP
EPXY FLOORING TO SEALED CONCRETE	USE TRANSITION STRIP
PORCELAIN TILE TO PORCELAIN TILE	USE TRANSITION STRIP
SEALED CONCRETE AT FLOOR DRAIN	USE TRANSITION STRIP
PORCELAIN TILE AT FLOOR DRAIN	USE TRANSITION STRIP
VCT TO EXISTING VCT	
VCT TO EPXY FLOORING	
VCT TO PORCELAIN TILE	
VCT TO SEALED CONCRETE	
VCT TO SHEET VINYL FLOORING	
VCT TO CARPET TRANSITION	
VCT TO EXTERIOR CONCRETE	
EPXY FLOORING TO SEALED CONCRETE	
PORCELAIN TILE TO PORCELAIN TILE	
SEALED CONCRETE AT FLOOR DRAIN	
PORCELAIN TILE AT FLOOR DRAIN	

**F1 SECOND FLOOR - FINISH PLAN**  
DATE: 10/19/14

<b>CONSULTANTS</b>		<b>ARCHITECT</b>		<b>SECOND FLOOR FINISH PLAN</b>		<b>RESEARCH ADDITION TO BUILDING 205</b>		<b>Office of Construction and Facilities Management</b>	
		200 East Grayson, Suite 207 San Antonio, TX 78215							
		210.530.0755							
		WWW.WESTEASTDESIGN.COM							
		These documents can not be copied or reproduced without written consent from WestEast Design Group							
Revision 3		05/19/2014		Drawing Title		Project Number		Project Title	
Revisions:		Date		SECOND FLOOR FINISH PLAN		674-279		RESEARCH ADDITION TO BUILDING 205	
				Approved Project Director		Location		Building Number	
						2100 S. 10th St., San Antonio, TX 78215		205	
						Date		Drawing Number	
						May 19, 2014		AS0.2-R	
						Checked		Dwg. 38 of 41	
						TB			
						DRAWN			
						EHP			