

three inches = one foot

one and one half inches = one foot

one inch = one foot

three quarters inch = one foot

one half inch = one foot

three eighths inch = one foot

one eighth inch = one foot

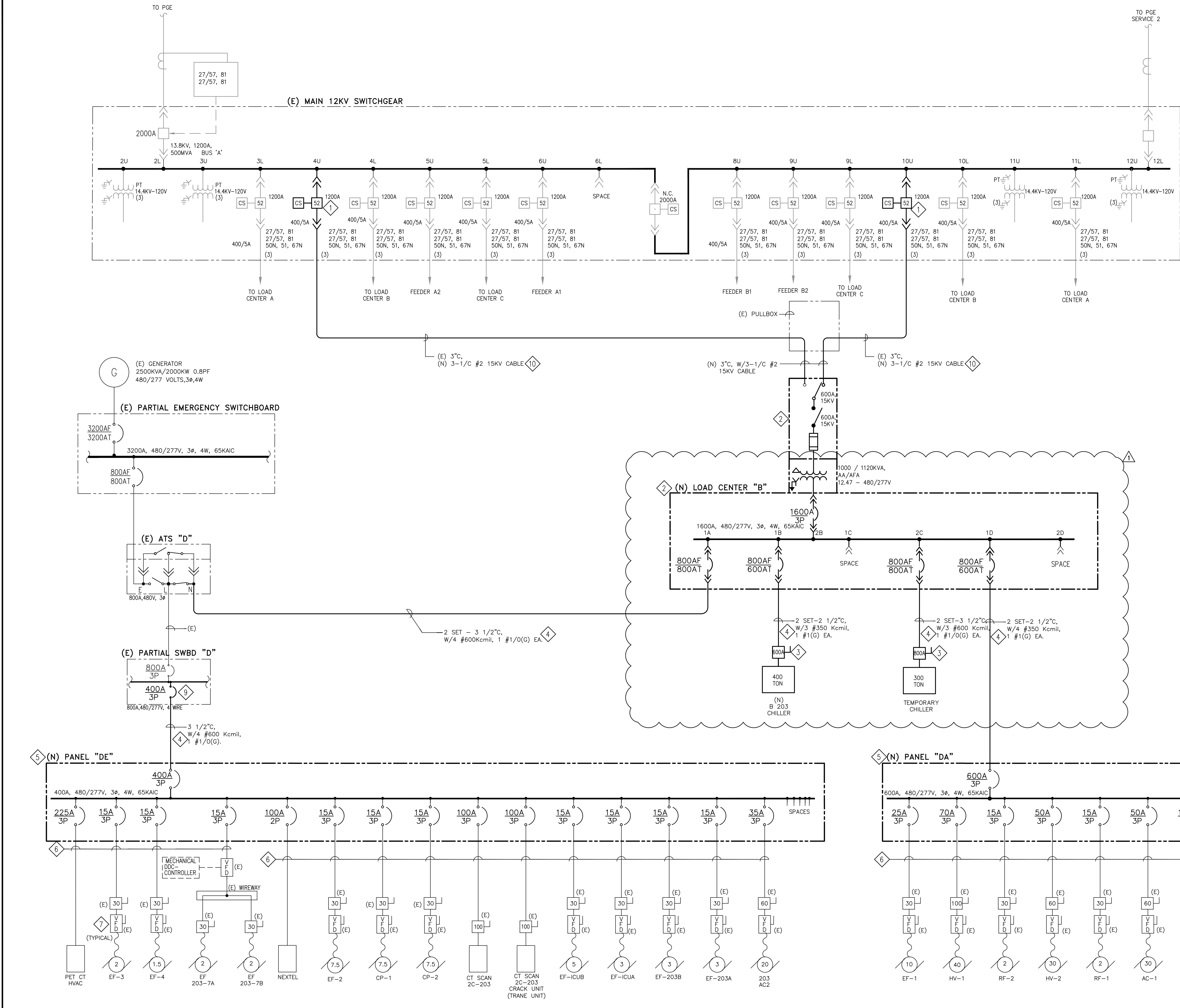
one quarter inch = one foot

one eighth inch = one foot

one eighth inch = one foot

one eighth inch = one foot

one eighth inch = one foot



### GENERAL NOTE:

- 1 ALL INSTALLATION SHOWN IN DRAWING AS EXISTING IS BASED ON THE ASSUMPTION THAT THE ELECTRICAL SYSTEM UPGRADE PROJECT AND THE NEW EMERGENCY GENERATOR PROJECT ARE COMPLETED AND IN SERVICE.
- 2 CIRCUIT CONNECTIONS TO EXISTING COMPARTMENT TO BE FIELD TRACED/VERIFIED BY CONTRACTOR PRIOR TO COMMENCING NEW WORK.

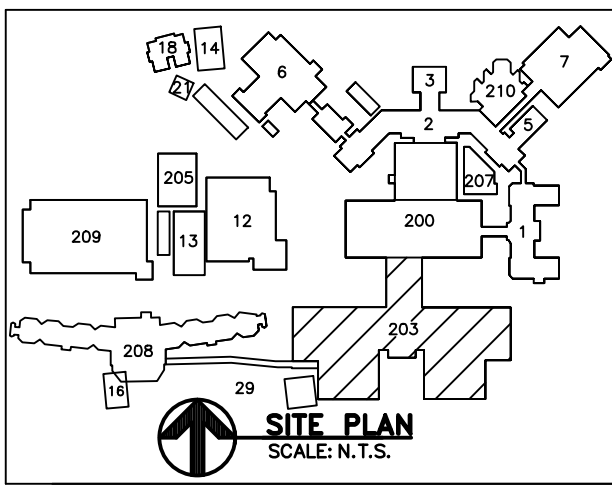
### SHEET NOTES:

- 1 PROVIDE AND INSTALL (N) 15KV, 1200A, 500MVA DRAW OUT, VACUUM CIRCUIT BREAKER. CIRCUIT BREAKER SHALL MATCH EXISTING INCLUDING METER, RELAYS AND ALL REQUIRED APPURTENANCES FOR A FULLY OPERATIONAL SYSTEM AS EXISTING. SEE ALSO DRAWING E-60-1.0 FOR LOCATION.
- 2 PROVIDE AND INSTALL A (N) 1000KVA, 12.47KV - 480/277V UNIT SUBSTATION "LOAD CENTER D", INCLUDING A PRIMARY SELECTOR FUSED SWITCH, DRY TYPE TRANSFORMER AND A LOW VOLTAGE 480/277V, 1600A, 3ø, 4W SWITCHGEAR WITH POWER CIRCUIT BREAKERS, AS SHOWN IN SLD DRAWING.
- 3 PROVIDE AND INSTALL A (N) 600A, 600V, 3P AND A 800A, 600V, 3P HEAVY DUTY UNFUSED DISCONNECT SWITCH IN A NEMA 3R ENCLOSURE FOR B203 AND TEMPORARY CHILLERS RESPECTIVELY AS SHOWN IN SLD AND PLAN DRAWING E-60-1.1.
- 4 PROVIDE AND INSTALL FEEDER WIRE AND CONDUITS SIZES AS SHOWN IN DWG, AND CONNECT TO CORRESPONDING EQUIPMENT. (SEE DWG.'S E-60-1.0 AND E-60-2.0)
- 5 PROVIDE AND INSTALL NEW 600A AND 400A, 480/277V, 3ø 4 WIRE DISTRIBUTION PANELS "DA" AND "DE" RESPECTIVELY AS SHOWN IN SLD, SEE DRAWING E-60-0.2 FOR PANEL SCHEDULES AND DRAWING E-60-2.0. CONTRACTOR SHALL FIELD VERIFY MOTOR HORSE POWER AND COORDINATE WITH THE ENGINEER BEFORE ORDERING CIRCUIT BREAKERS.
- 6 SPLICE/EXTEND FEEDER WIRES AND CONDUIT FROM NEW J-BOX TO BE INSTALLED NEAR EXISTING MCC "AE" AND "A", TO CORRESPONDING DISTRIBUTION PANEL (SEE NOTE 3 AND NOTE 5 IN DWG E-60-2.0 AND NOTE 1 IN DWG. ED-60-0.2), TERMINATE EACH CIRCUIT AT EACH CORRESPONDING DISTRIBUTION PANEL AS SHOWN IN SLD AND PANEL SCHEDULE IN DRAWING E-60-0.2.
- 7 EXISTING DRIVES PROVIDED AND INSTALLED BY OTHERS.
- 8 PROVIDE AND INSTALL NEW VFD RATED FOR MOTOR HP AS SHOWN WITH DISCONNECT AND ISOLATION BY PASS. VFD SHALL BE MOUNTED ON STATIONS. VFD FOR COOLING TOWER FAN CT-1 SHALL BE MOUNTED ON WALL AND SHALL HAVE A NEMA 3R ENCLOSURE AND A SUN SHIELD. ALL OTHER VFD SHALL HAVE NEMA 12 ENCLOSURES.
- 9 CONTRACTOR SHALL PROVIDE, INSTALL AND REPLACE EXISTING 600A/3P CIRCUIT BREAKER WITH NEW 400A/3P, 600V CIRCUIT BREAKER. NEW CIRCUIT BREAKER TYPE AND INTERRUPTING RATING SHALL MATCH EXISTING.
- 10 PROVIDE 3 #2AWG, 15KV, COPPER SHIELDED CABLE TO CONNECT NEW LOAD CENTER "D" TO MAIN 12KV SWITCHGEAR, CIRCUIT BREAKERS 4 AND 10 RESPECTIVELY. CABLE SHALL BE INSTALLED IN EXISTING 3" CONDUIT FROM MAIN SWITCHGEAR TO EXISTING PULLBOX ABOVE LOAD CENTER "A" AND IN NEW 3" CONDUIT FROM (E) PULLBOX TO LOAD CENTER "D".

SHOW DEMO ALSO

REVISED PER VA REDLINES		02/09/14
100% FINAL SUBMISSION		01/23/13
Revisions:		Date

### CONSULTANTS:



### ARCHITECT/ENGINEERS:

**ADVANCE DESIGN CONSULTANTS, INC**  
PROFESSIONAL ENGINEERS  
998 PARK AVENUE SAN JOSE, CA 95126  
(408) 297-1881 FAX: (408) 294-3186

WWW.ADCENGINEERS.COM

### Drawing Title:

**ELECTRICAL  
NEW ONE LINE DIAGRAM**

Approved Project Director:

### Project Title:

**BUILDING 203  
CHILLER REPLACEMENT**

Location:  
**4150 CLEMENT ST. SAN FRANCISCO, CA**

Date:  
**AUGUST 2011**

Checked:  
**L. FLORES**

Drawn:  
**A. FLORES**

### Project Number:

**662-11-004**

Building Number:  
**203**

Drawing Number:  
**203-E-60-01**

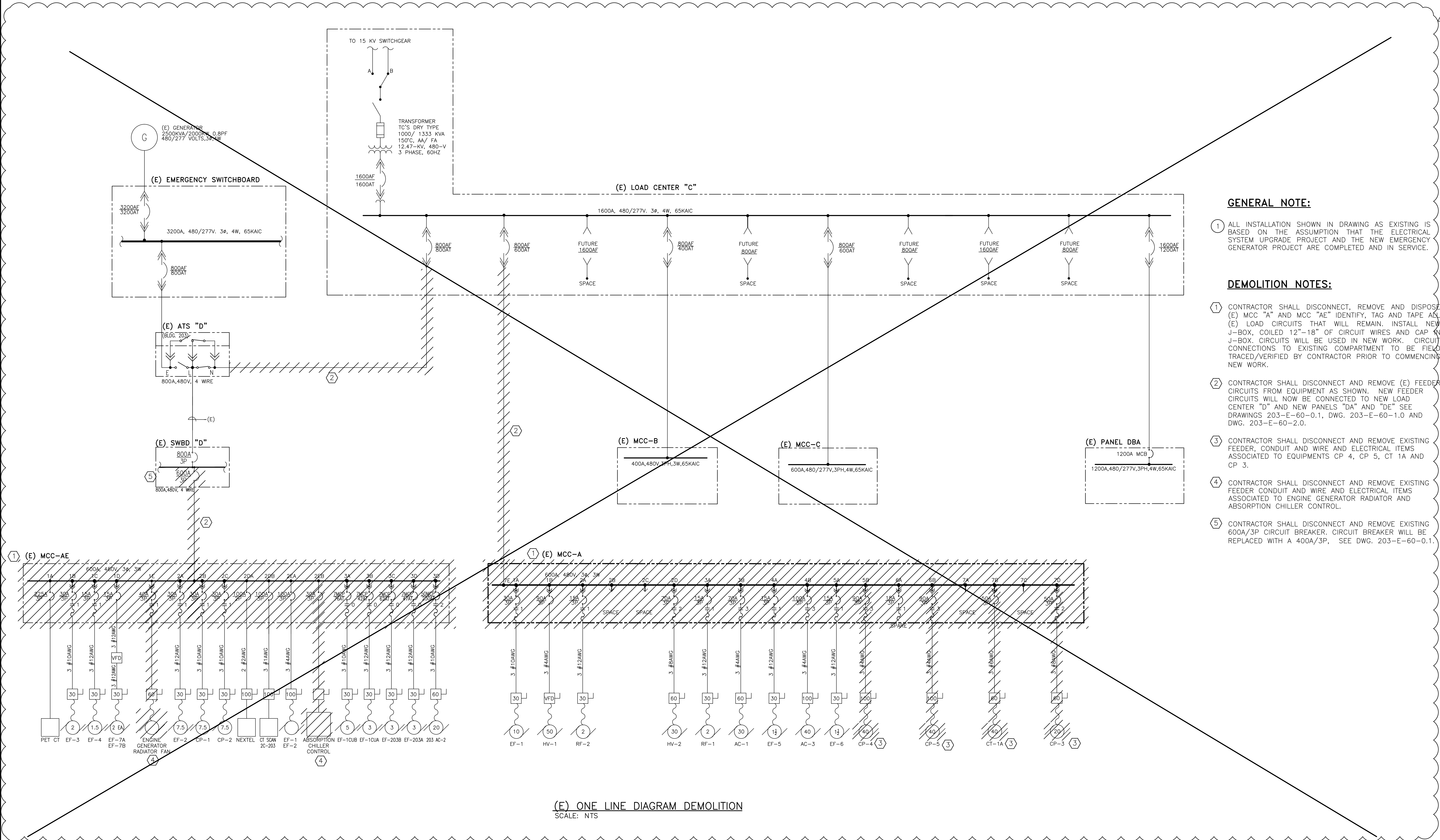
Dwg. -- of --

Office of  
Construction  
and Facilities  
Management

Department of  
Veterans Affairs



three inches = one foot  
one and one half inches = one foot  
one inch = one foot  
three quarters inch = one foot  
one half inch = one foot  
three eighths inch = one foot  
one quarter inch = one foot  
one eighth inch = one foot  
one eighth inch = one foot



<b>CONSULTANTS:</b>		<b>ARCHITECT/ENGINEERS:</b>		<b>Drawing Title:</b>		<b>Project Title:</b>		<b>Project Number:</b>		<b>Office of Construction and Facilities Management</b> Department of Veterans Affairs	
		<b>ADVANCE DESIGN CONSULTANTS, INC.</b> PROFESSIONAL ENGINEERS 998 PARK AVENUE SAN JOSE, CA 95126 (408) 297-1881 FAX: (408) 294-3186 WWW.ADCENGINEERS.COM		<b>ELECTRICAL ONE LINE DIAGRAM - DEMOLITION</b>		<b>BUILDING 203 CHILLER REPLACEMENT</b>		<b>662-11-004</b>			
				<b>Approved Project Director:</b>		<b>Location:</b>		<b>Building Number:</b>			
						<b>4150 CLEMENT ST. SAN FRANCISCO, CA</b>		<b>203</b>			
<b>Revisions:</b>		<b>SITE PLAN</b> SCALE: N.T.S.				<b>Date:</b>		<b>Checked:</b>		<b>Drawn:</b>	
REVISED PER VA REDLINES 100% FINAL SUBMISSION						AUGUST 2011		ALEX Q.		M. CUILLAR	
02/09/14 01/23/13 Date										<b>203-ED-60-0.1</b> Dwg. -- of --	