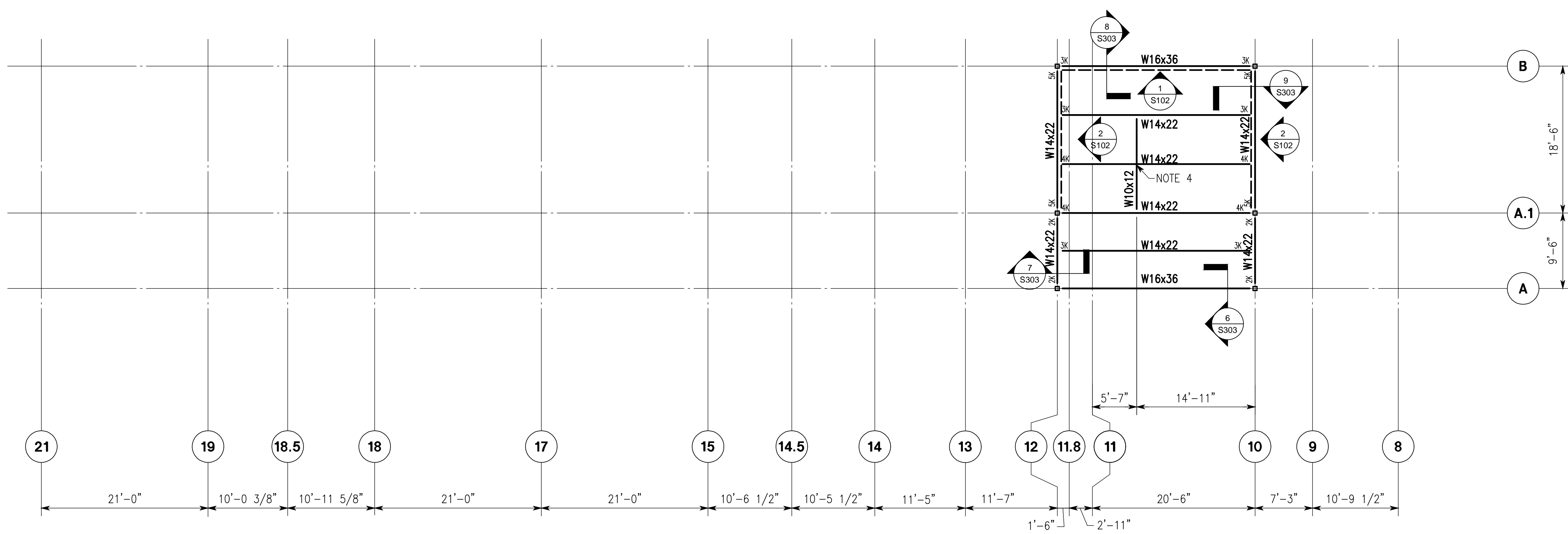


Penthouse Floor Framing Plan

1/8"=1'-0"

1. TOP OF SLAB MATCH EXISTING ELEVATOR ROOF ±658'-8 1/4".
2. FLOOR FRAMING SYSTEM: CONCRETE SLAB ON NON-COMPOSITE CONCRETE METAL DECK ON STEEL BEAMS.
3. VERIFY LOCATION OF OPENINGS WITH ARCHITECTURAL AND MECHANICAL DRAWINGS.
4. DECK CLOSURE ANGLE CONTINUOUS AROUND EXISTING STRUCTURE - ATTACH WITH 1/2"x6" HILTI KWIK HUS-EZ SCREW ANCHORS.







Penthouse Roof Framing Plan

1/8"=1'-0"

1. TOP OF STEEL ELEVATION ±670'-4 3/4".
2. ROOF FRAMING SYSTEM: 1.5" METAL DECK ON STEEL BEAMS.
3. VERIFY LOCATION OF HOIST BEAM WITH MECHANICAL CONTRACTOR.
4. ATTACH HOIST BEAM TO UNDERSIDE OF STEEL.

Column Schedule			
COLUMN DESIGNATION		C1	C2
COLUMN	SIZE	22"Ø	HSS 4x4x3/8
	BASE PLATE	EXISTING	1/2"x8"x8"
	ANCHOR RODS	8-#8 BARS	(4) 3/4"x1'
	NOTES	#4 TIES @12"	

CONSTRUCTION DOCUMENTS - 100% FINALS FULLY SPRINKLERED

CONSULTING ENGINEERS:  LBYP, Inc. Civil and Structural Engineers 716 South 30th Street Birmingham, AL 35233 Main (205) 251-4500 Fax (205) 324-4181		ARCHITECT:  CMH Architects, Inc. 1800 International Park Drive, Suite 300 Birmingham, AL 35243 (205) 969-2696 - TEL (205) 969-3930 - FAX www.cmharch.com Copyright © 2011 CMH Architects, Inc.		PROJECT MANAGEMENT:  WALKER AND MOORE 1108 Laurel Lane Montgomery, Alabama 36106 Telephone: 334.380.4999 Facsimile: 334.264.5555		Drawing Title PENTHOUSE FRAMING PLANS	Project Title A/E AMBULATORY SURGERY IMPROVEMENTS	Project Number 521-328	Office of Construction and Facilities Management 
Revisions		Date		Approved Project Director James Zellander		Location VAMC - Birmingham, Alabama	Building Number 0000000000	Drawing Number S206	
						Date 5/23/2014	Checked WIN	Drawn GVA	