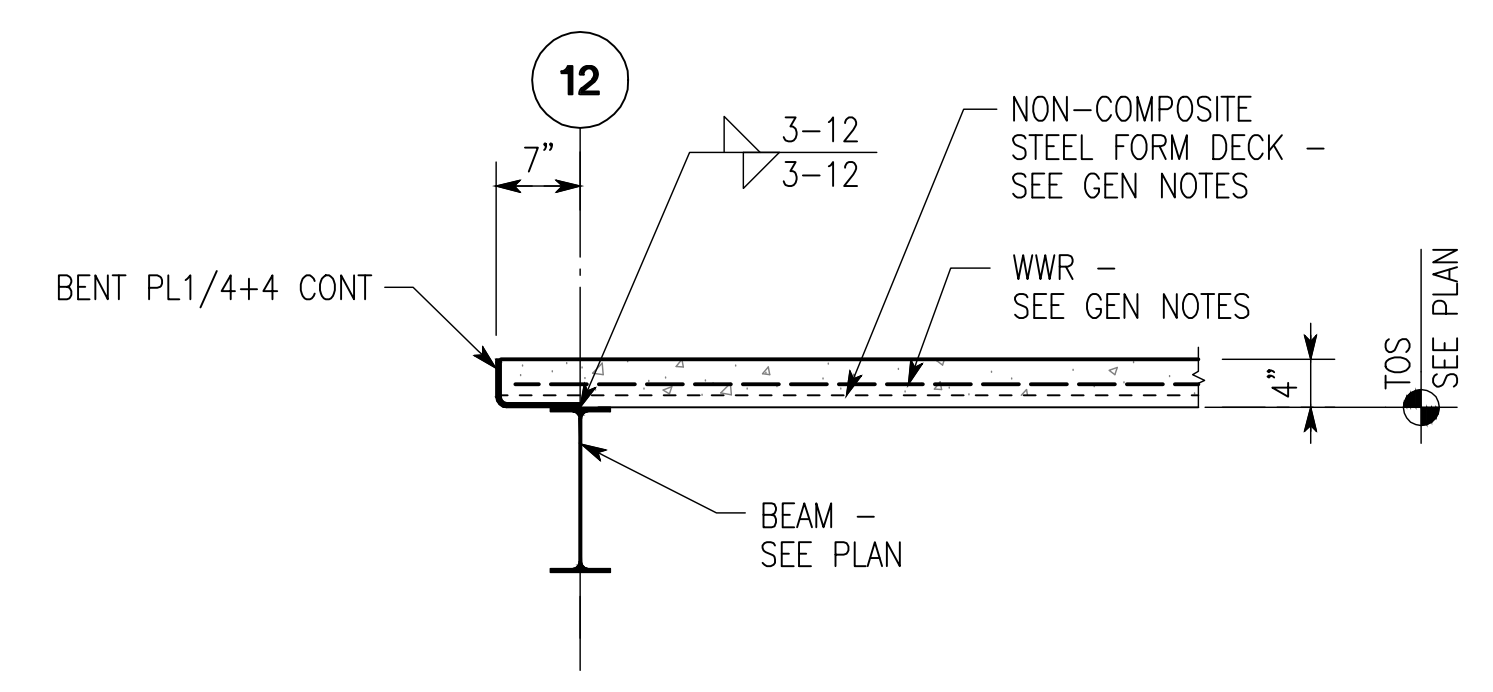
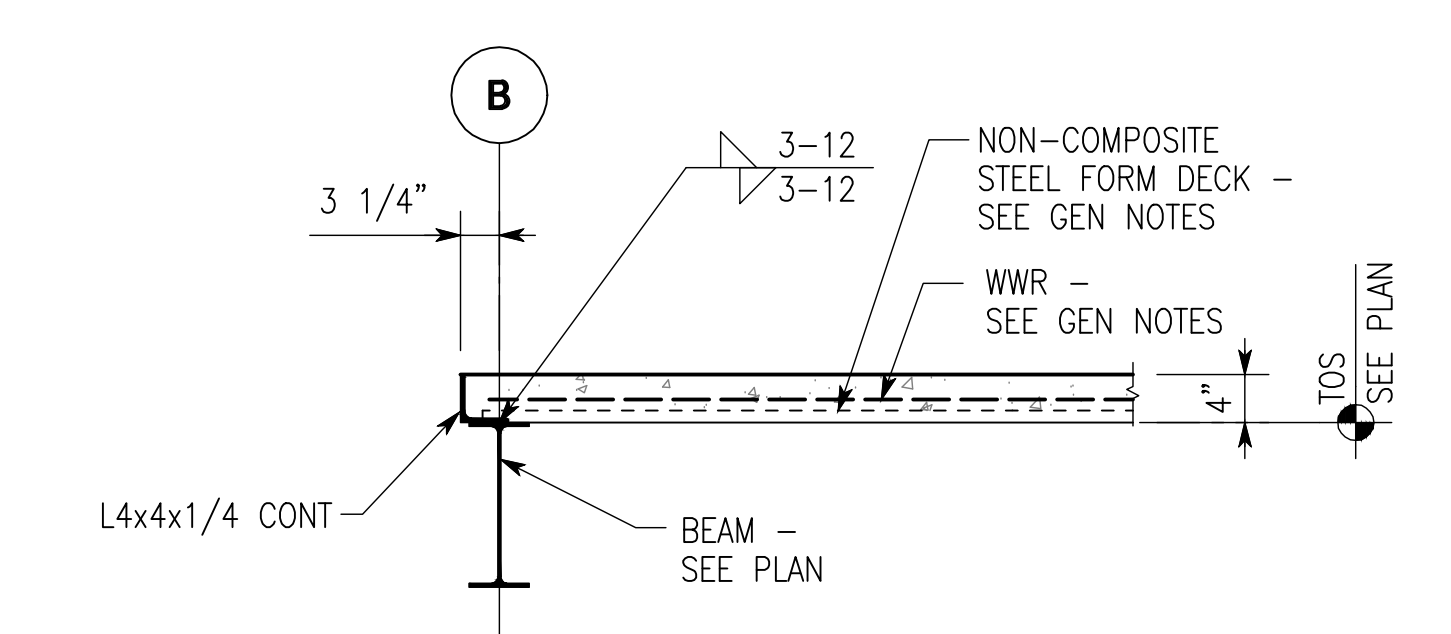


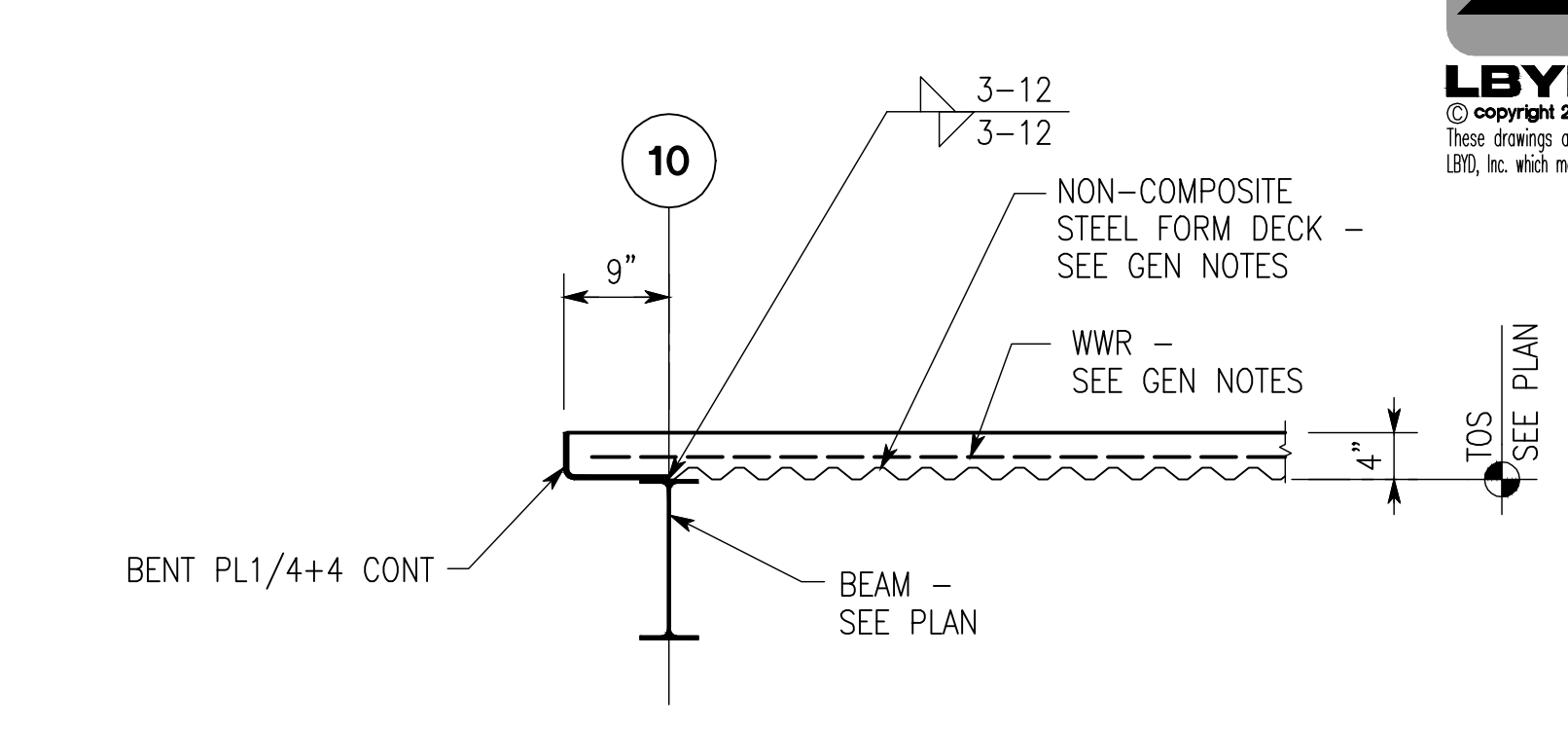
1 Section
S303 3/4"=1'-0"



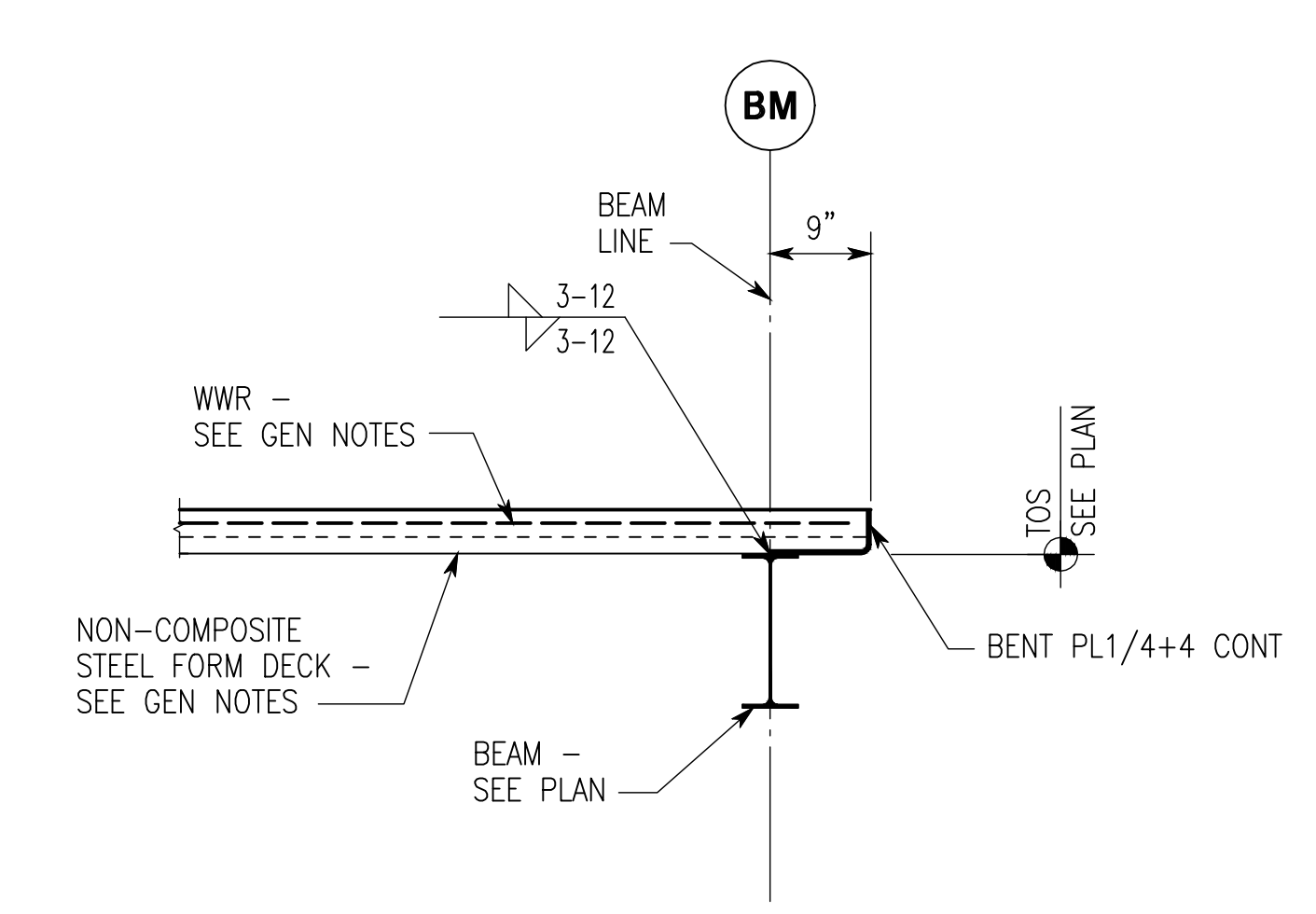
2 Section
S303 3/4"=1'-0"



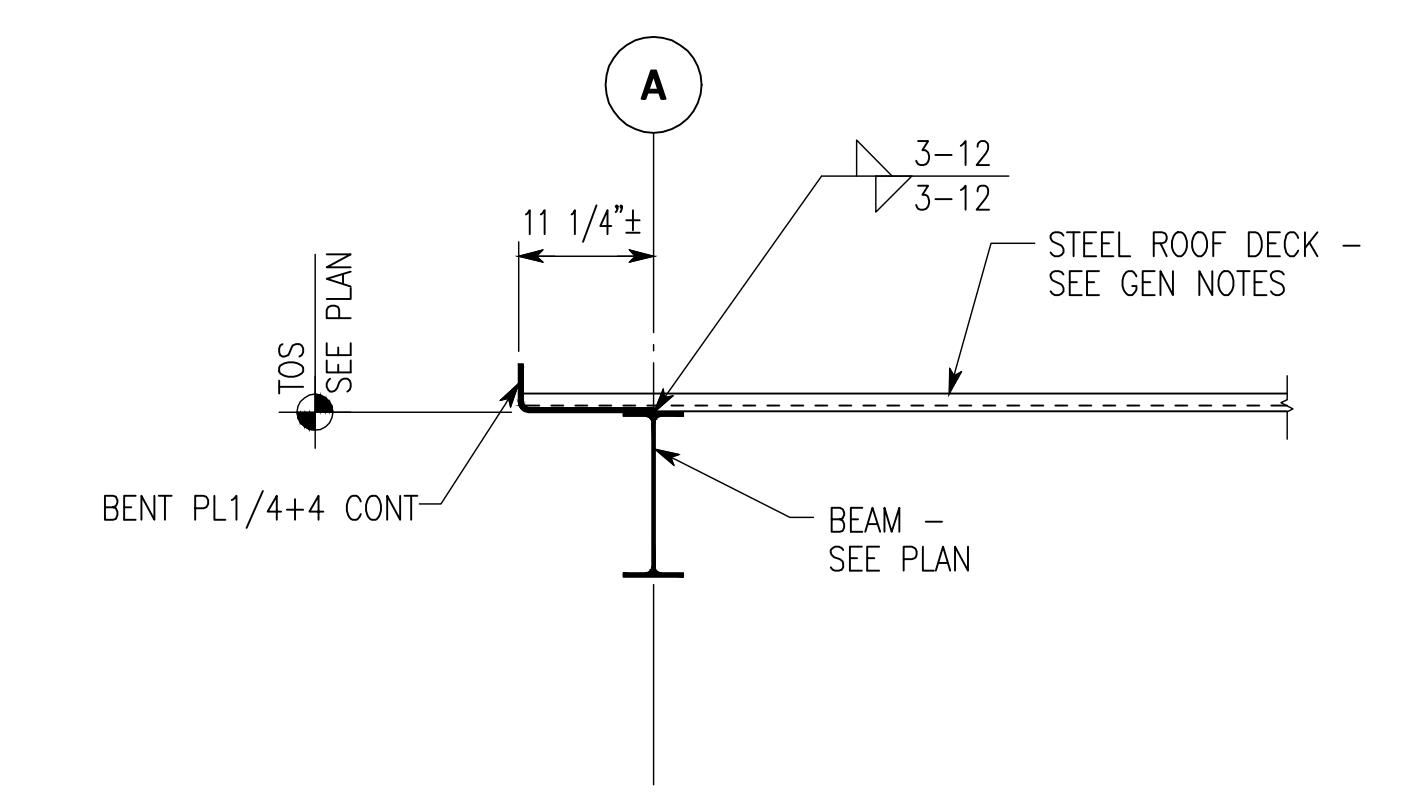
3 Section
S303 3/4"=1'-0"



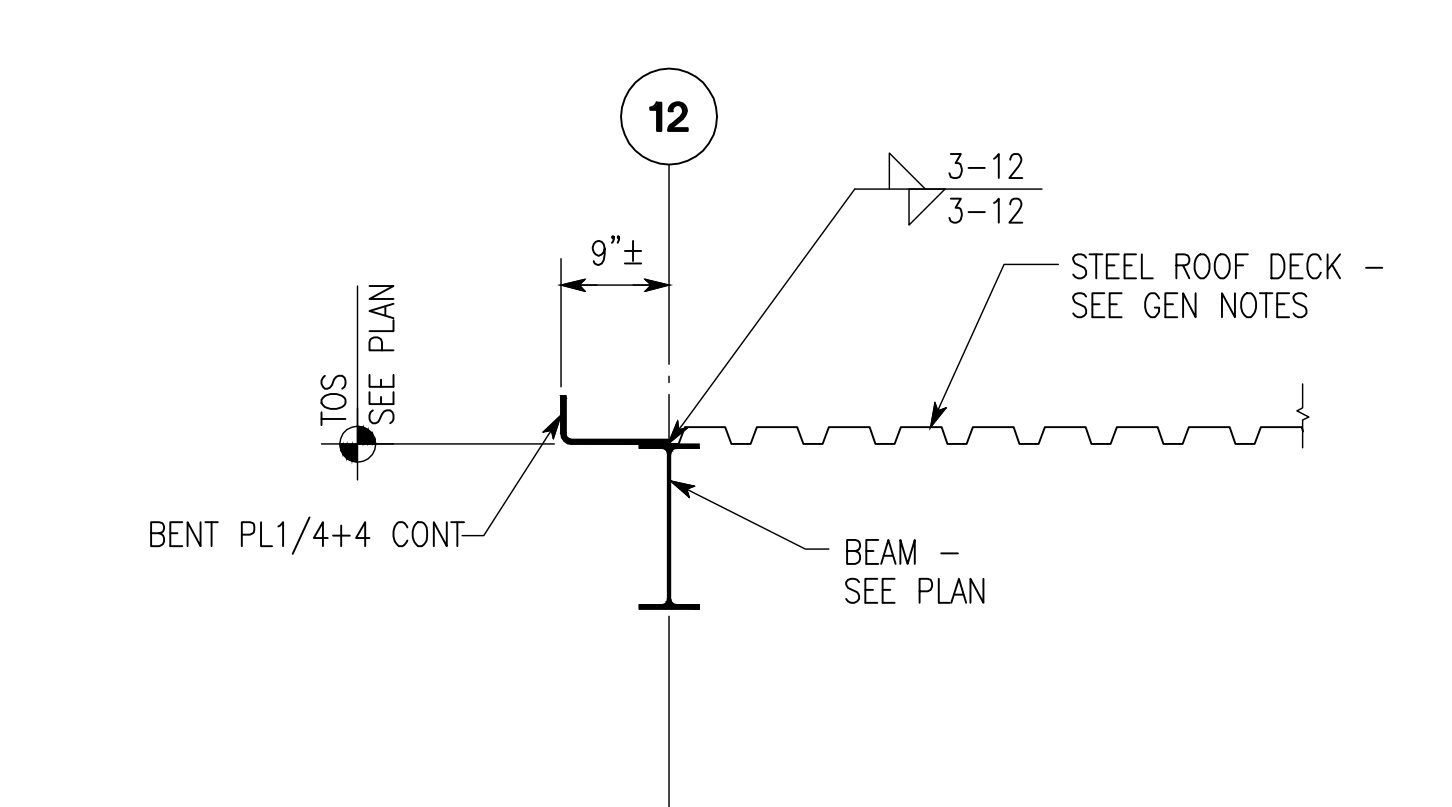
4 Section
S303 3/4"=1'-0"



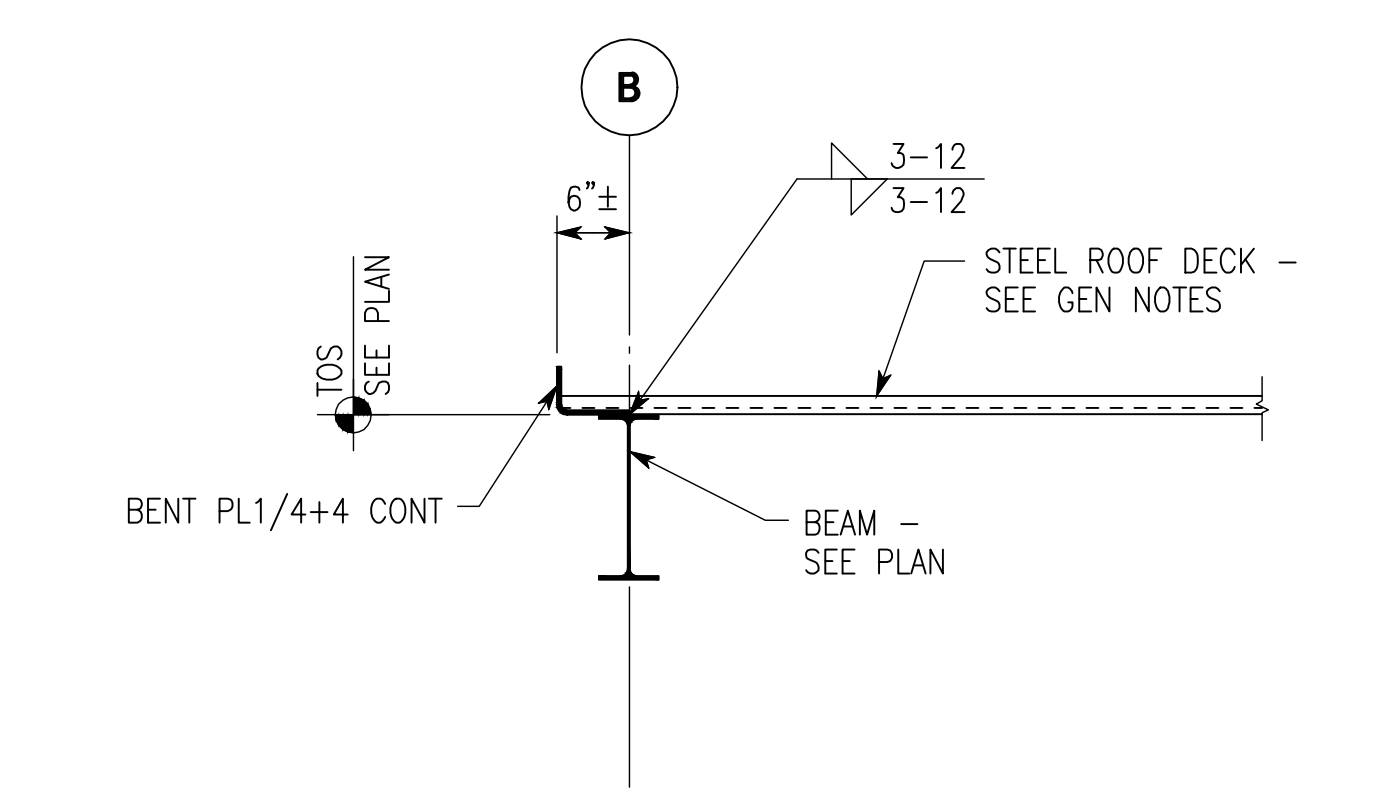
5 Section
S303 3/4"=1'-0"



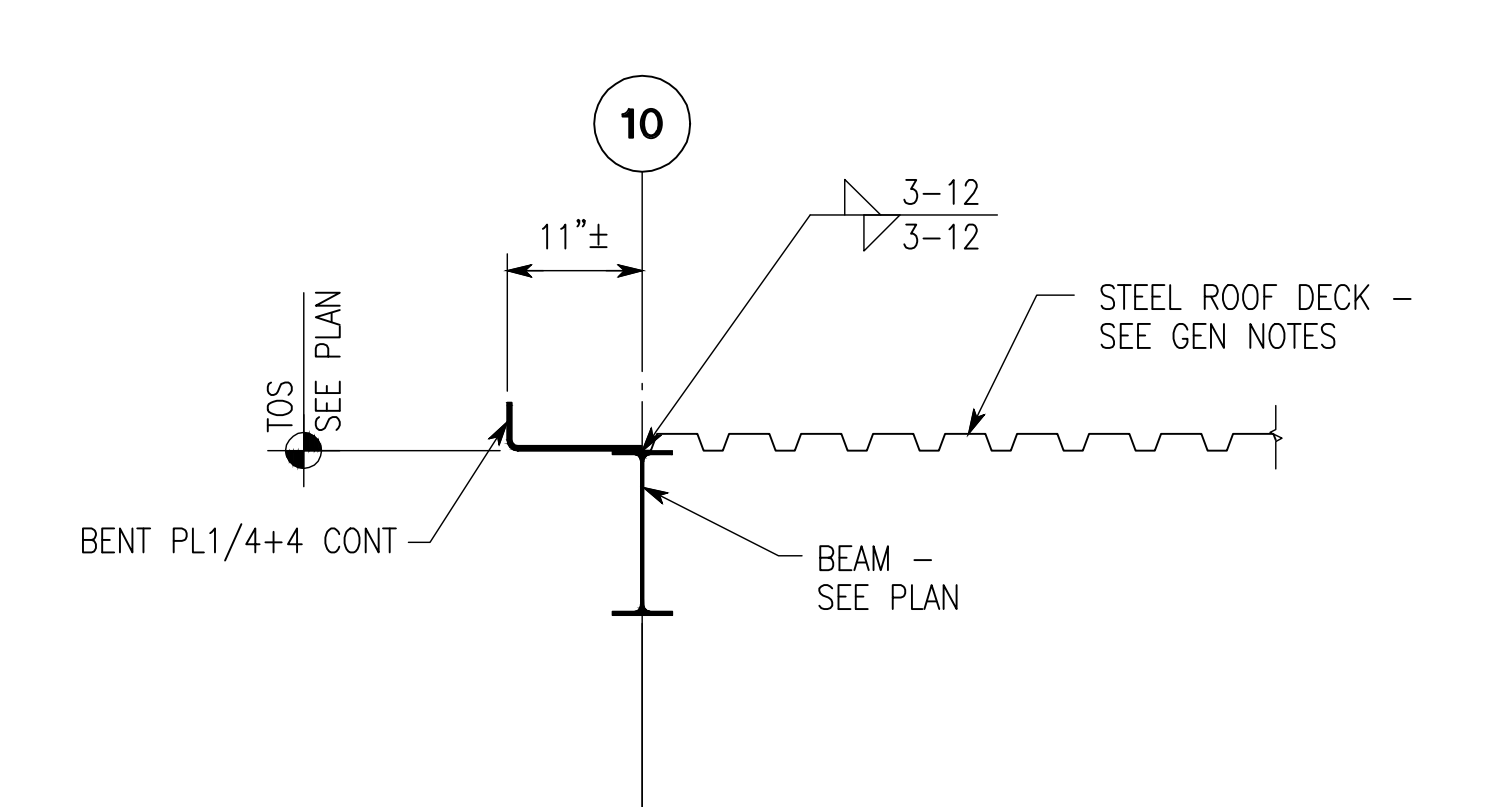
6 Section
S303 3/4"=1'-0"



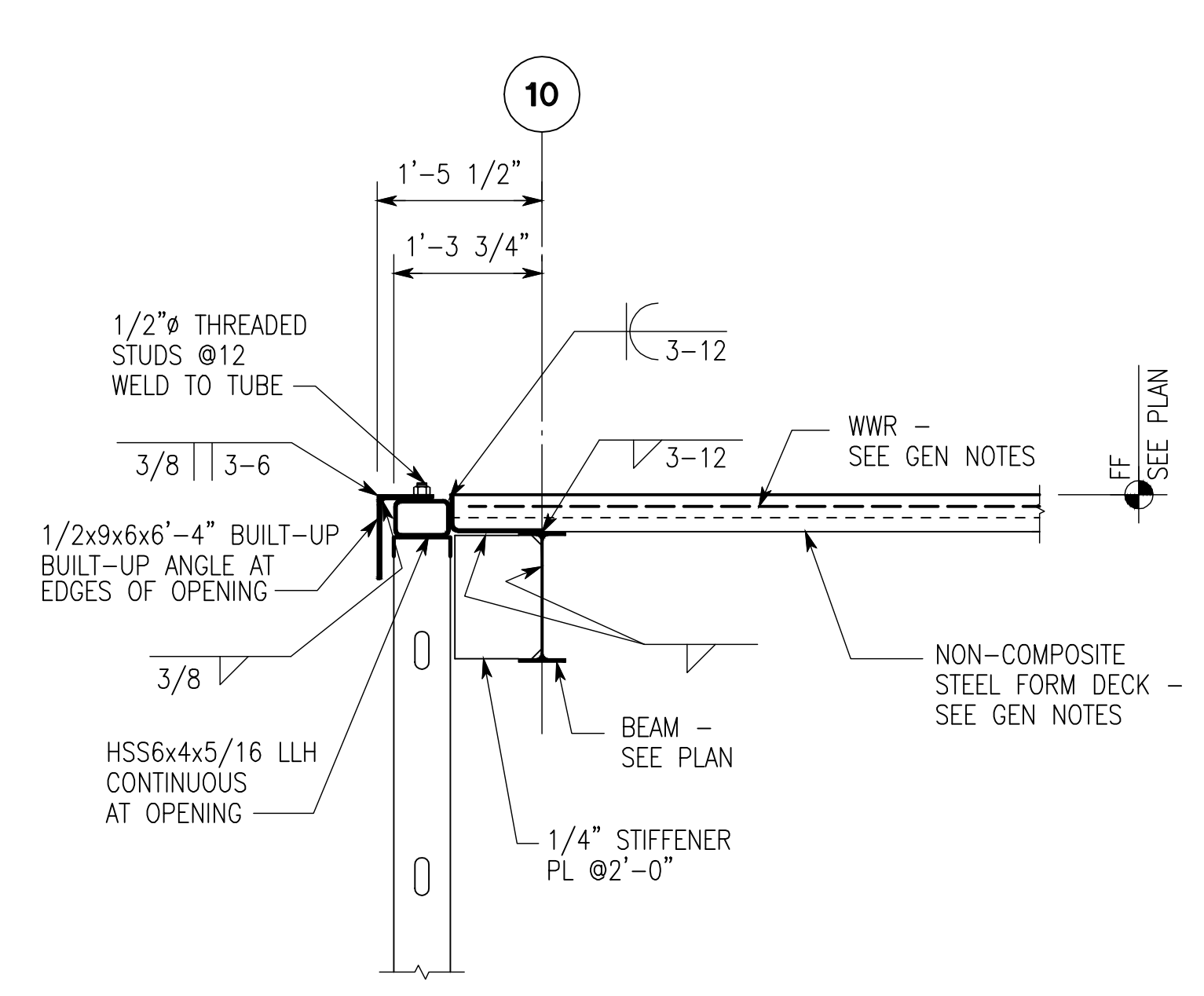
7 Section
S303 3/4"=1'-0"



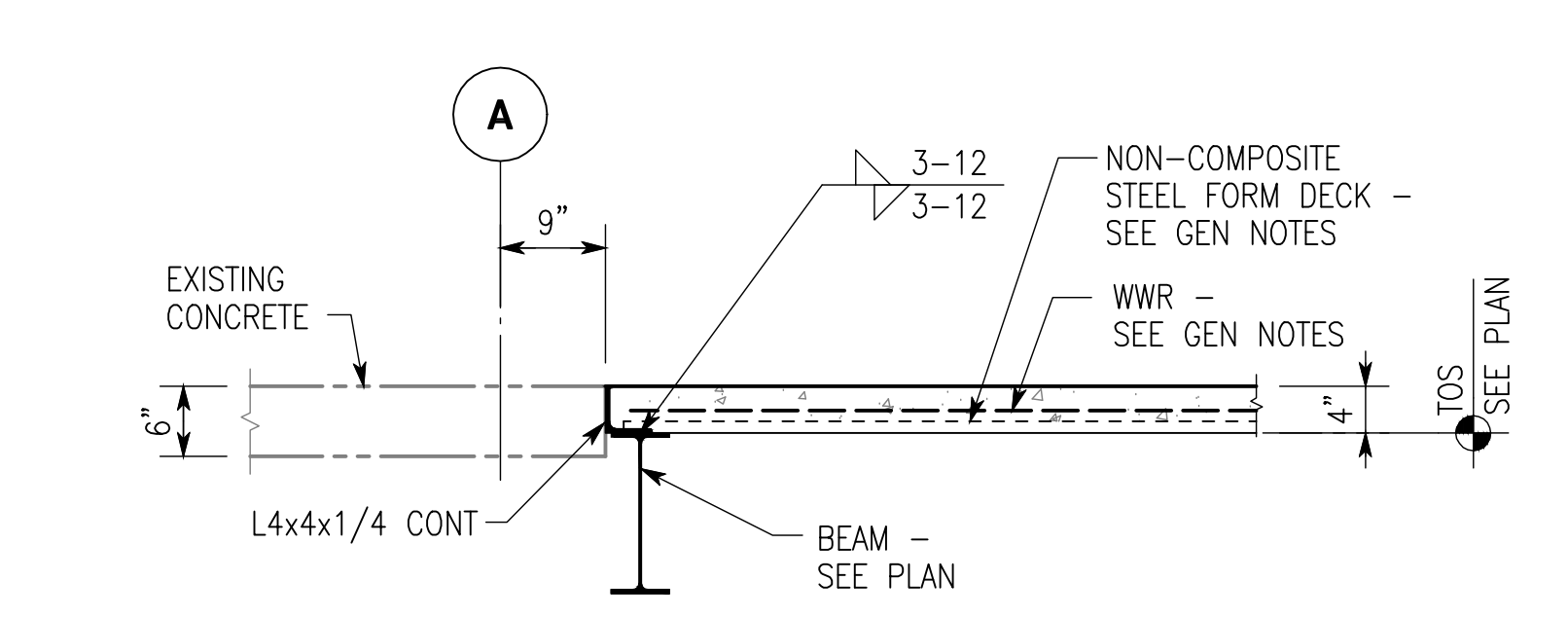
8 Section
S303 3/4"=1'-0"



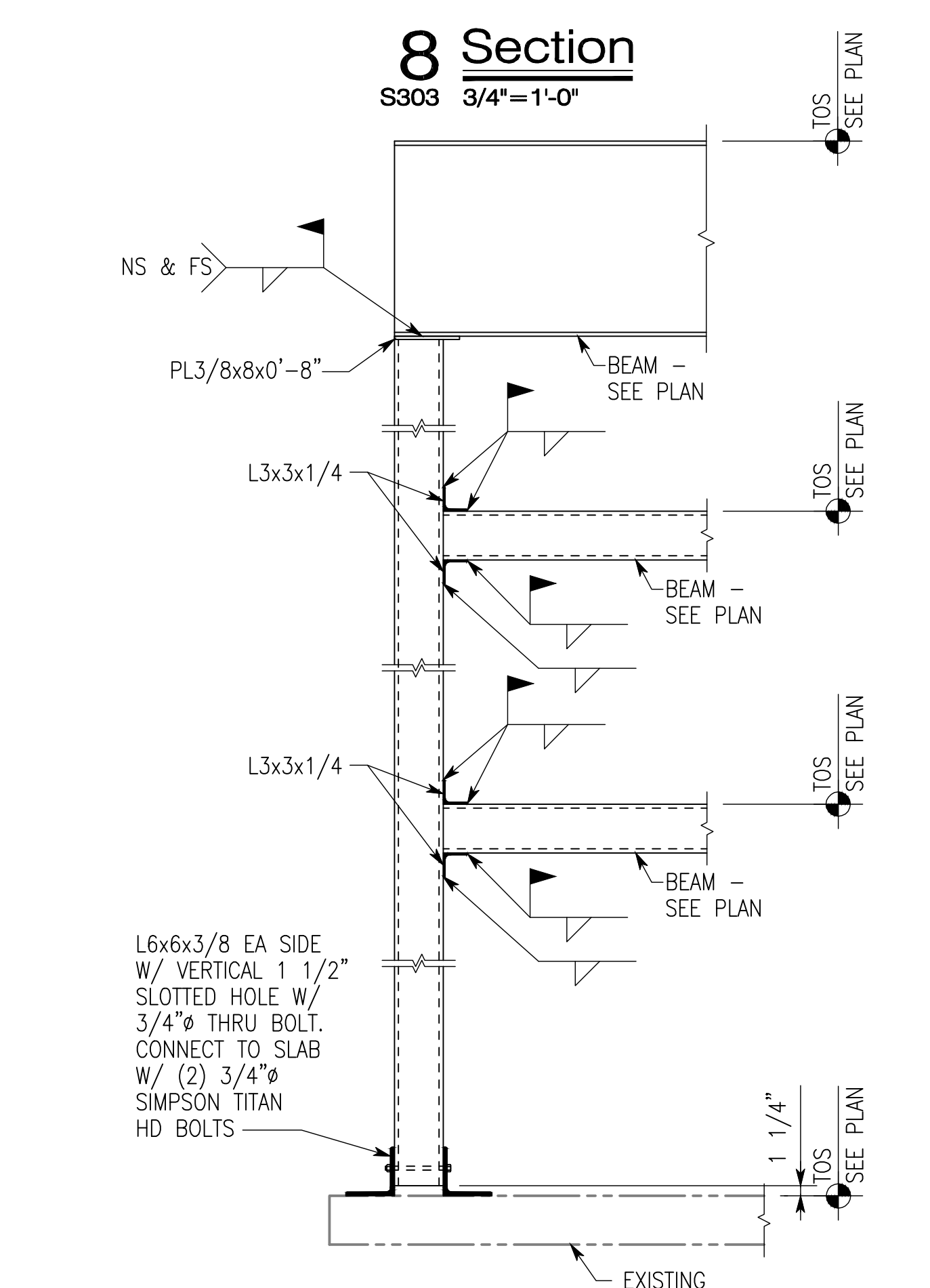
9 Section
S303 3/4"=1'-0"



10 Section
S303 3/4"=1'-0"



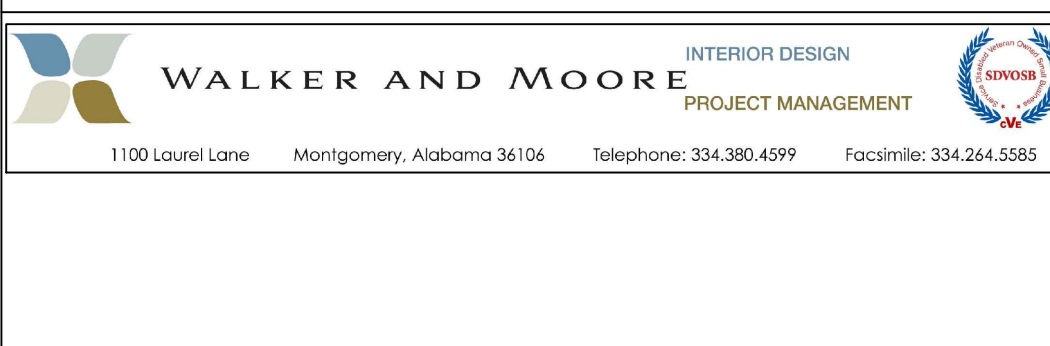
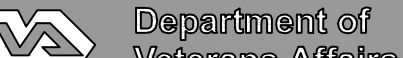


11 Section
S303 3/4"=1'-0"



12 Section
S303 3/4"=1'-0"

CONSTRUCTION DOCUMENTS - 100% FINALS FULLY SPRINKLERED

CONSULTING ENGINEERS:  Civil and Structural Engineers 716 South 30th Street Birmingham, AL 35233 Main (205) 251-4500 Fax (205) 324-4181		ARCHITECT:  CMH Architects, Inc. 1800 International Park Drive, Suite 300 Birmingham, AL 35243 (205) 969-2696 - TEL (205) 969-3930 - FAX www.cmharch.com Copyright © 2011 CMH Architects, Inc.		PROJECT MANAGEMENT:  WALKER AND MOORE 1100 Laurel Lane Montgomery, Alabama 36106 Telephone: 334.380.4999 Facsimile: 334.264.5585		Drawing Title SECTIONS Approved Project Director James Zellander		Project Title A/E AMBULATORY SURGERY IMPROVEMENTS Location VAMC - Birmingham, Alabama Date 5/23/2014 Checked WIN Drawn LAP		Project Number 521-328 Building Number 0000000000 Drawing Number S303 Dwg. 11 of 124		Office of Construction and Facilities Management 	
---	--	--	--	--	--	--	--	--	--	--	--	--	--

three inches = one foot
one and one half inches = one foot
one inch = one foot
three quarters inch = one foot
one half inch = one foot
three eighths inch = one foot
one quarter inch = one foot
one eighth inch = one foot
one eighth inch = one foot

PLOT DATE: 5/19/2014 3:53 PM I:\101-10-256\001\CADD\ACAD\S303.dwg