

ANSI A117.1 & A.D.A. STANDARDS

THE FOLLOWING CODES HAVE BEEN USED TO OUTLINE ACCESSIBILITY GUIDELINES CONTAINED WITHIN THIS SHEET. WHERE THERE IS A CONFLICT BETWEEN TWO OR MORE CODES, THE MOST STRINGENT REQUIREMENT HAS BEEN USED (DEPENDENT ON APPROVAL BY ADMINISTRATIVE AUTHORITY ADOPTING THESE STANDARDS).

- 2009 ICC/ANSI A117.1 - ALL REFERENCE NUMBERS REFER TO ANSI A117.1, EXCEPT AS NOTED.

- 2010 ADA STANDARDS FOR ACCESSIBLE DESIGN (SHOWN IN ITALICS)

- 2012 INTERNATIONAL BUILDING CODE (CHAPTER 11, ETC.)

- 2012 NFPA 101 LIFE SAFETY CODE (7.5.4, ETC.)

NOTE: - 2012 IBC REFERENCES THE 2003 ICC/ANSI A117.1 Accessibility (IBC Chapter 11) Design (1101.2) Buildings and facilities shall be designed and constructed to be accessible with this code (2009 IBC) and 2009 ICC/ANSI A117.1. (See Chapter 35 Referenced Standards).

104. CONVENTIONS

ALL DIMENSIONS THAT ARE NOT STATED AS "MAXIMUM" OR "MINIMUM" ARE ABSOLUTE.

ALL DIMENSIONS ARE SUBJECT TO CONVENTIONAL INDUSTRY TOLERANCES.

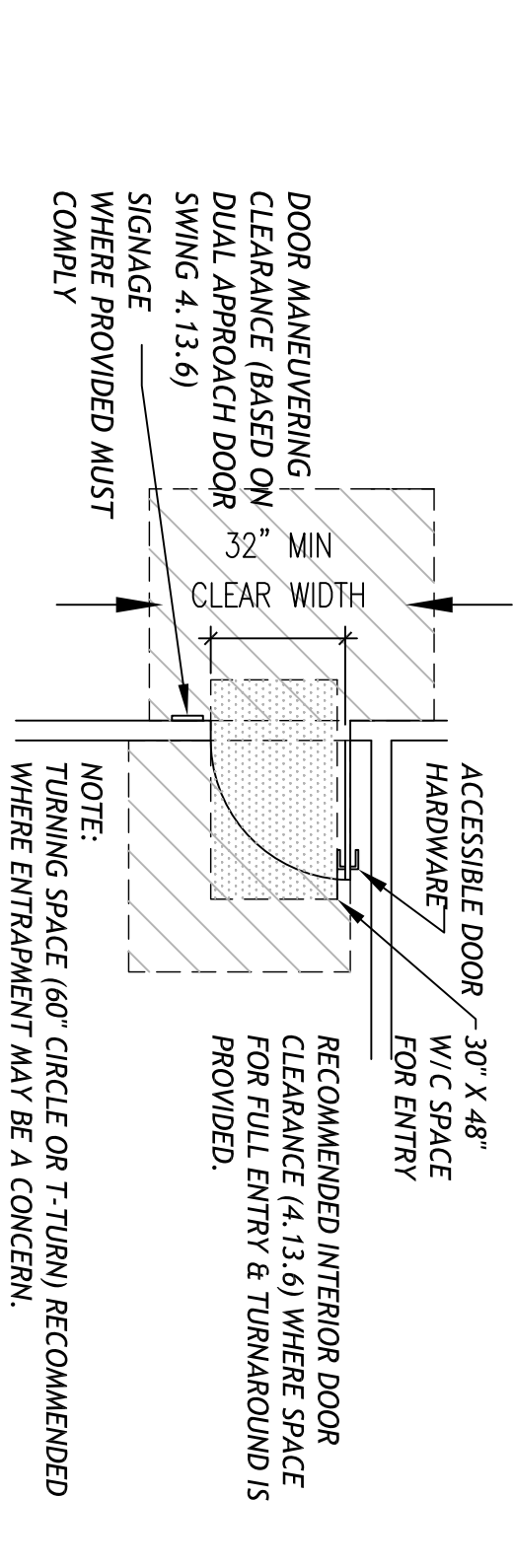
[104.1.1] *ADA Standards* RECOGNIZES CONVENTIONAL INDUSTRY TOLERANCES FOR FIELD CONDITIONS EXCEPT WHERE STATED AS A RANGE. THIS APPLIES TO THE FIELD WORK, NOT THE DESIGN WORK.

REQUIREMENTS:

[203.9] 2010 *ADA Standards* EMPLOYEE WORK AREAS - SEE 206.2.8, 207.1 & 215.3

PUBLIC OR COMMON USE AREAS MUST BE FULLY ACCESSIBLE. ACCESS IS REQUIRED TO, NOT FULLY WITHIN, WORK AREAS IN ORDER TO REACH ACCESS OR DISABLED EMPLOYEES MAKE THEIR NEED AREAS ARE COMMON USE & MUST BE FULLY ACCESSIBLE. WORK AREAS THAT FUNCTION AS PUBLIC USE SPACES MUST BE FULLY ACCESSIBLE FOR PUBLIC ACCESS.

WORK AREAS MUST BE ACCESSIBLE FOR APPROACH, ENTRY & EXIT - WHICH MEANS LOCATION ON AN ACCESSIBLE ROUTE SO THAT PEOPLE USING WHEELCHAIRS CAN ENTER & BACK OUT OF A SPACE.



CORRIDOR

RECOMMENDATIONS: SPACE FOR TURNING WITHIN THE WORK AREA & INTERIOR MANEUVERING CLEARANCES AT DOORS, WHILE NOT REQUIRED, SHOULD BE CONSIDERED, ESPECIALLY WHERE ENTRANCEWAY MAY BE A CONCERN (I.E., ENTRY DOORS W/ CLOSERS). INTERIOR DOOR CLEARANCES ARE RECOMMENDED WHERE SPACE FOR FULL ENTRY & TURNING IS AVAILABLE WITHIN A WORK AREA.

301.2 OVERLAP

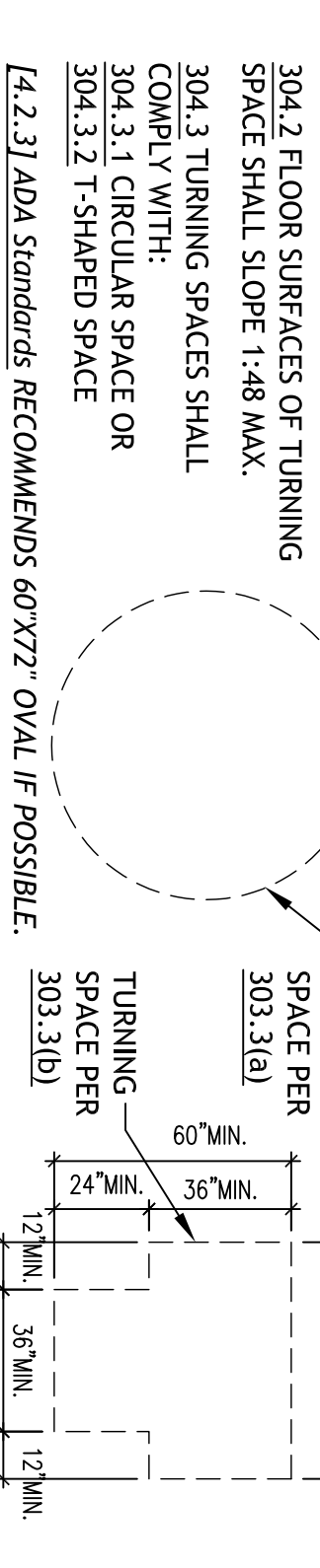
UNLESS OTHERWISE SPECIFIED, CLEAR FLOOR SPACES, CLEARANCES AT FIXTURES, MANEUVERING CLEARANCES AT DOORS & TURNING SPACES SHALL BE PERMITTED TO OVERLAP.

302 FLOOR SURFACES [202] *ADA Standards*

MAX. IN HEIGHT. EXPOSED EDGES SHALL COMPLY WITH 303.

302.3 OPENINGS IN FLOOR SURFACES SHALL NOT ALLOW PASSAGE OF 1/2" SPHERE. SOME SECTIONS PLACE ELEVATED OPENINGS WITH LONG DIMENSION PERPENDICULAR TO DOMINANT DIRECTION OF TRAVEL.

304 TURNING SPACE [204] *ADA Standards*



[4.2.3] *ADA Standards* RECOMMENDS 60" X 72" OVAL IF POSSIBLE.

307.2 PROTRUDING OBJECTS [207] *ADA Standards*

307.2 OBJECTS WITH LEADING EDGES MORE THAN 27 INCHES & NOT MORE THAN 80 INCHES ABOVE THE FLOOR SHALL PROTRUDE 4" MAX. INTO CIRCULATION SPACE. PERMITTED TO OVERLAP 4" MAX. WHERE MORE THAN 27 INCHES & NOT MORE THAN 80 INCHES ABOVE THE FLOOR. OBJECTS ON ALL THE POSTS OR PILLONS WHERE THE CLEAR DISTANCE BETWEEN POSTS OR PILLONS IS GREATER THAN 12" SHALL HAVE THE LOWEST EDGE OF SUCH OBJECT EITHER 27 INCHES MAX. OR 80 INCHES MIN. ABOVE THE FLOOR.

307.4 GUARDRAILS OR OTHER BARRIERS SHALL BE PROVIDED WHERE OBJECT PROTRUSION IS BEYOND LIMITS ALLOWED BY 307.2 & 307.3 & WHERE VERTICAL CLEARANCE IS LESS THAN 80 INCHES ABOVE FLOOR. LEADING EDGE OF SUCH GUARDRAIL SHALL BE 27 INCHES MAX. ABOVE FLOOR.

307.3 PROTRUDING OBJECTS SHALL NOT REDUCE THE CLEAR WIDTH REQUIRED FOR ACCESSIBLE ROUTES.

402 ACCESSIBLE ROUTES [206 & 402] *ADA Standards*

[206.2.1] *ADA Standards*, **SITE ARRIVAL POINTS**, AT LEAST ONE ACCESSIBLE ROUTE SHALL BE PROVIDED WITHIN THE SITE FROM ACCESSIBLE PARKING SPACES & LOADING ZONES.

[206.2.2] *ADA Standards*, AT LEAST ONE ACCESSIBLE ROUTE SHALL CONNECT ACCESSIBLE BUILDINGS, FACILITIES, ELEMENTS, & SPACES THAT ARE ON THE SAME SITE.

RECOMMENDATION: ACCESSIBLE ROUTES CAN CROSS VEHICULAR WAYS BUT IT IS RECOMMENDED THAT THEY BE MARKED AS A PEDESTRIAN CROSSING.

1104.1 IBC SITE ARRIVAL POINTS, ACCESSIBLE ROUTES WITHIN THE SITE SHALL BE PROVIDED FROM PUBLIC TRANSPORTATION STOPS, ACCESSIBLE PARKING, ACCESSIBLE PASSENGER LOADING ZONES, AND PUBLIC STREETS OR SIDEWALKS TO THE ACCESSIBLE BUILDING SERVED.

1104.2 IBC SITE ARRIVAL POINTS, ACCESSIBLE ROUTES WITHIN THE SITE SHALL BE PROVIDED FROM PUBLIC TRANSPORTATION STOPS, ACCESSIBLE PARKING, ACCESSIBLE PASSENGER LOADING ZONES, AND PUBLIC STREETS OR SIDEWALKS TO THE ACCESSIBLE BUILDING SERVED.

1104.3 IBC SITE ARRIVAL POINTS, ACCESSIBLE ROUTES WITHIN THE SITE SHALL BE PROVIDED FROM PUBLIC TRANSPORTATION STOPS, ACCESSIBLE PARKING, ACCESSIBLE PASSENGER LOADING ZONES, AND PUBLIC STREETS OR SIDEWALKS TO THE ACCESSIBLE BUILDING SERVED.

1104.4 IBC SITE ARRIVAL POINTS, ACCESSIBLE ROUTES WITHIN THE SITE SHALL BE PROVIDED FROM PUBLIC TRANSPORTATION STOPS, ACCESSIBLE PARKING, ACCESSIBLE PASSENGER LOADING ZONES, AND PUBLIC STREETS OR SIDEWALKS TO THE ACCESSIBLE BUILDING SERVED.

1104.5 IBC SITE ARRIVAL POINTS, ACCESSIBLE ROUTES WITHIN THE SITE SHALL BE PROVIDED FROM PUBLIC TRANSPORTATION STOPS, ACCESSIBLE PARKING, ACCESSIBLE PASSENGER LOADING ZONES, AND PUBLIC STREETS OR SIDEWALKS TO THE ACCESSIBLE BUILDING SERVED.

1104.6 IBC SITE ARRIVAL POINTS, ACCESSIBLE ROUTES WITHIN THE SITE SHALL BE PROVIDED FROM PUBLIC TRANSPORTATION STOPS, ACCESSIBLE PARKING, ACCESSIBLE PASSENGER LOADING ZONES, AND PUBLIC STREETS OR SIDEWALKS TO THE ACCESSIBLE BUILDING SERVED.

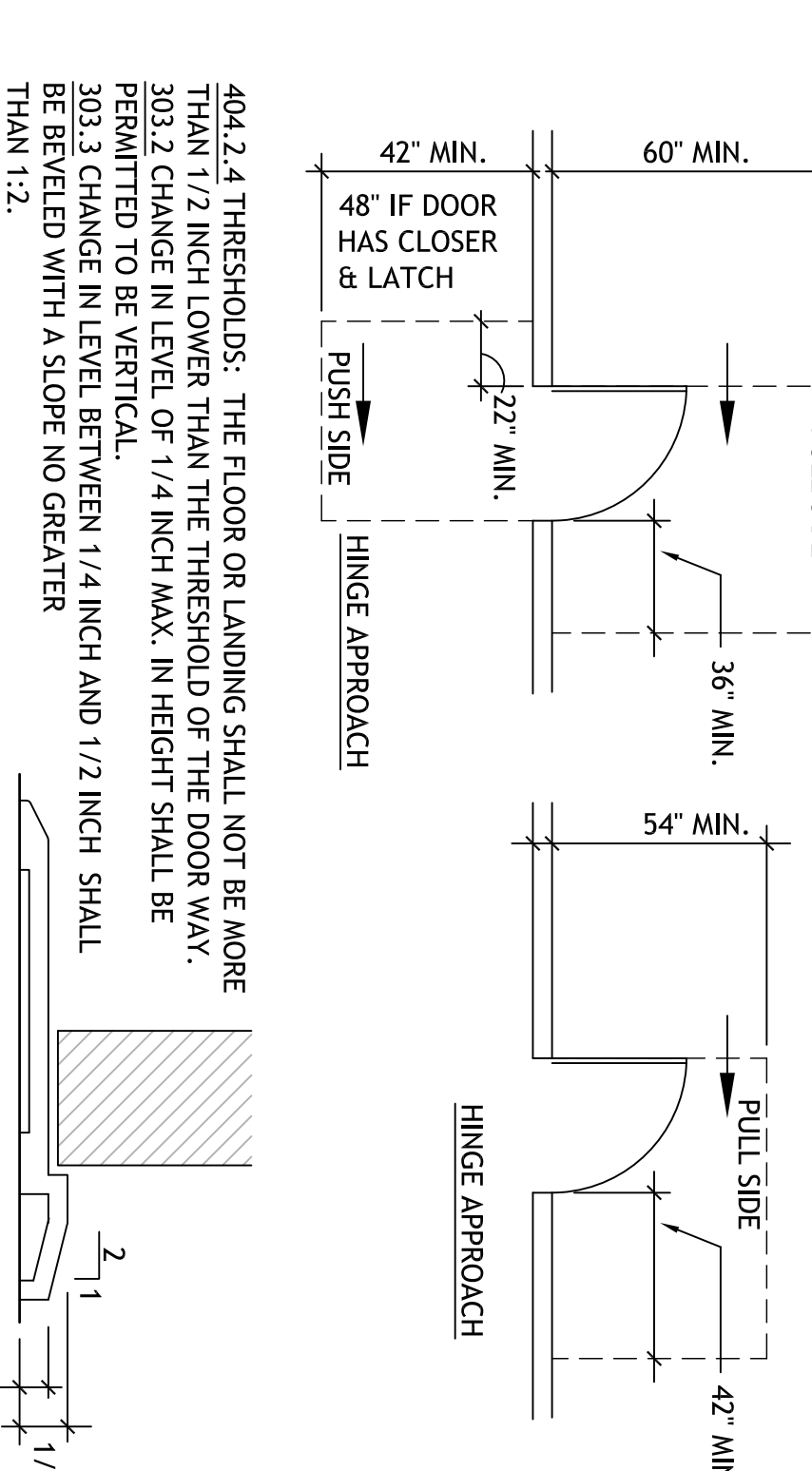
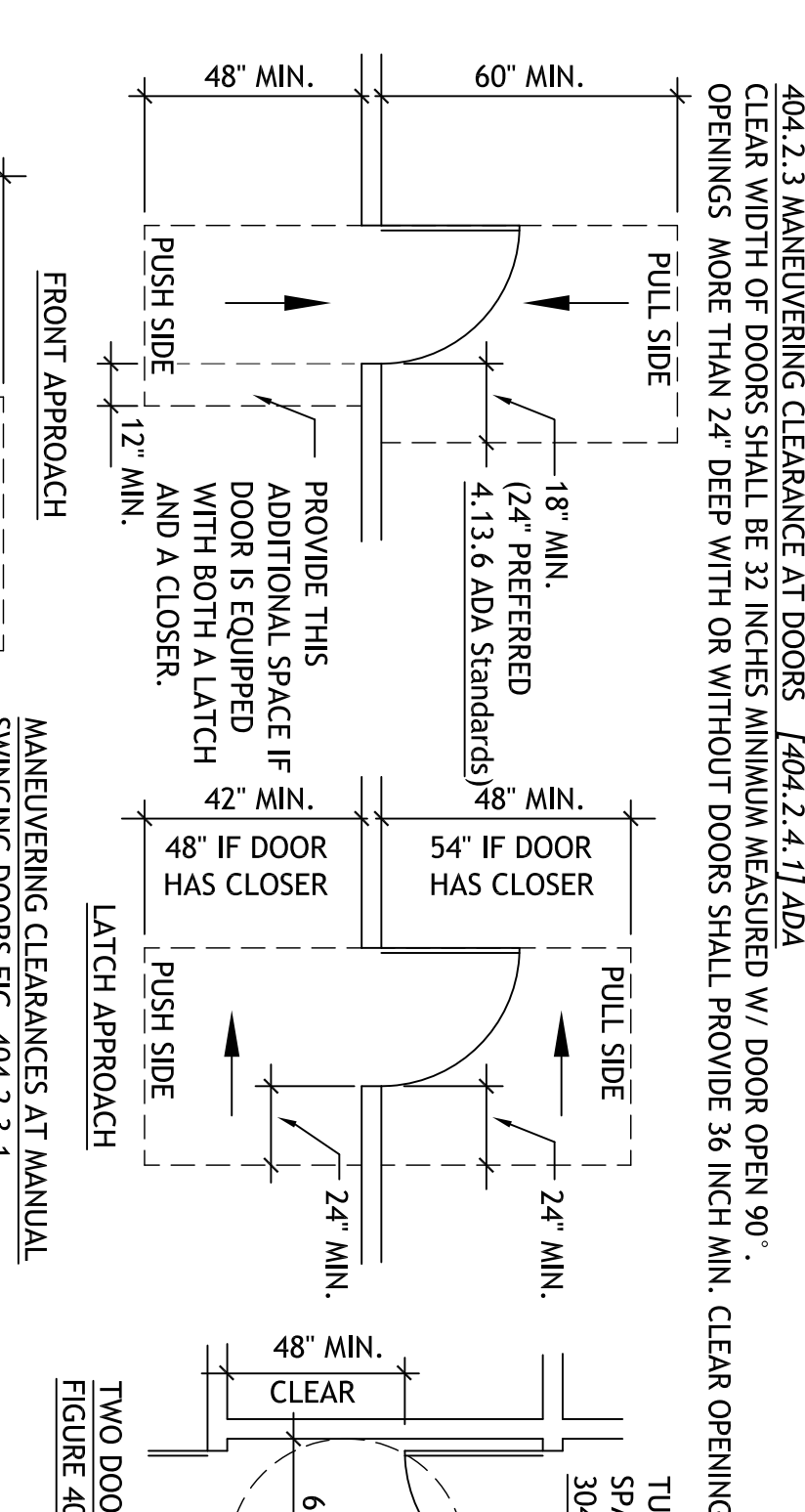
SEGMENT LENGTH	SEGMENT WIDTH
≤ 24 INCHES	32 INCHES
> 24 INCHES	36 INCHES

404 DOORS [404] *ADA*

404.2.2 CLEAR WIDTH OF DOORS SHALL BE 32 INCHES MINIMUM MEASURED W/ DOOR OPEN 90°.

404.2.3 MANEUVERING CLEARANCE AT DOORS [404.2.3.1] *ADA*

404.2.3.1 CLEAR WIDTH OF DOORS SHALL BE 32 INCHES MINIMUM MEASURED W/ DOOR OPEN 90°.



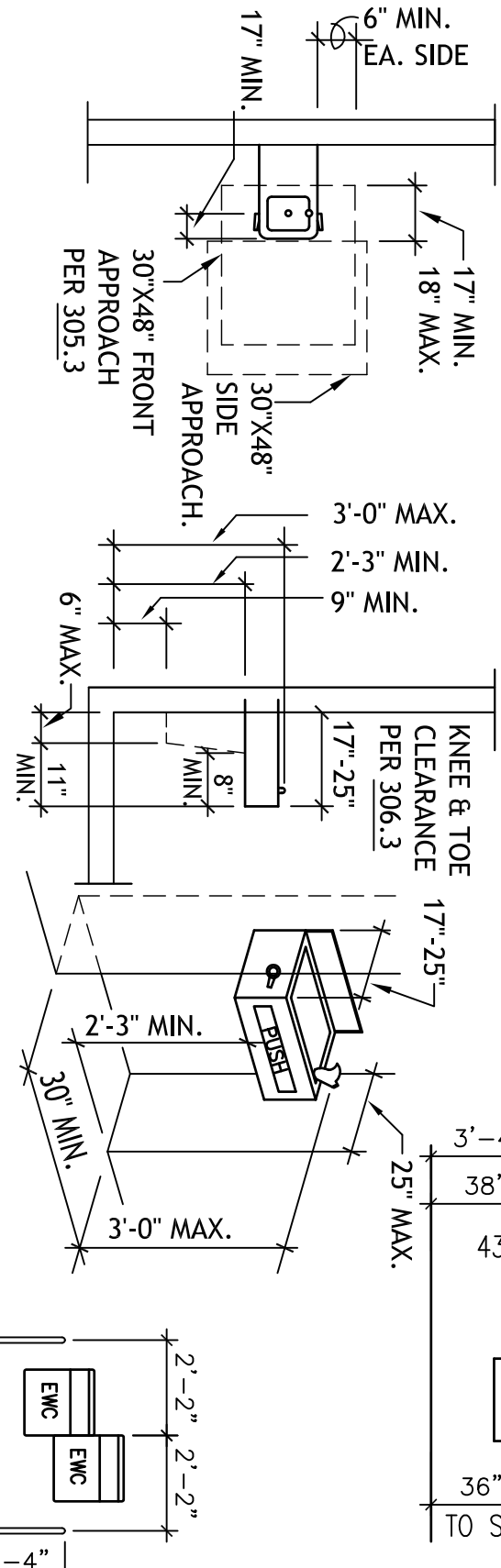
404.2.4 THRESHOLDS: THE FLOOR OR LANDING SHALL NOT BE MORE THAN 1/2 INCH LOWER THAN THE THRESHOLD OF THE DOOR WAY.

303.2 CHANGE IN LEVEL OF 1/4 INCH MAX. IN HEIGHT SHALL BE PERMITTED TO BE VERTICAL.

303.3 CHANGE IN LEVEL BETWEEN 1/4 INCH AND 1/2 INCH SHALL BE PERMITTED WITH A SLOPE NO GREATER THAN 1:2.

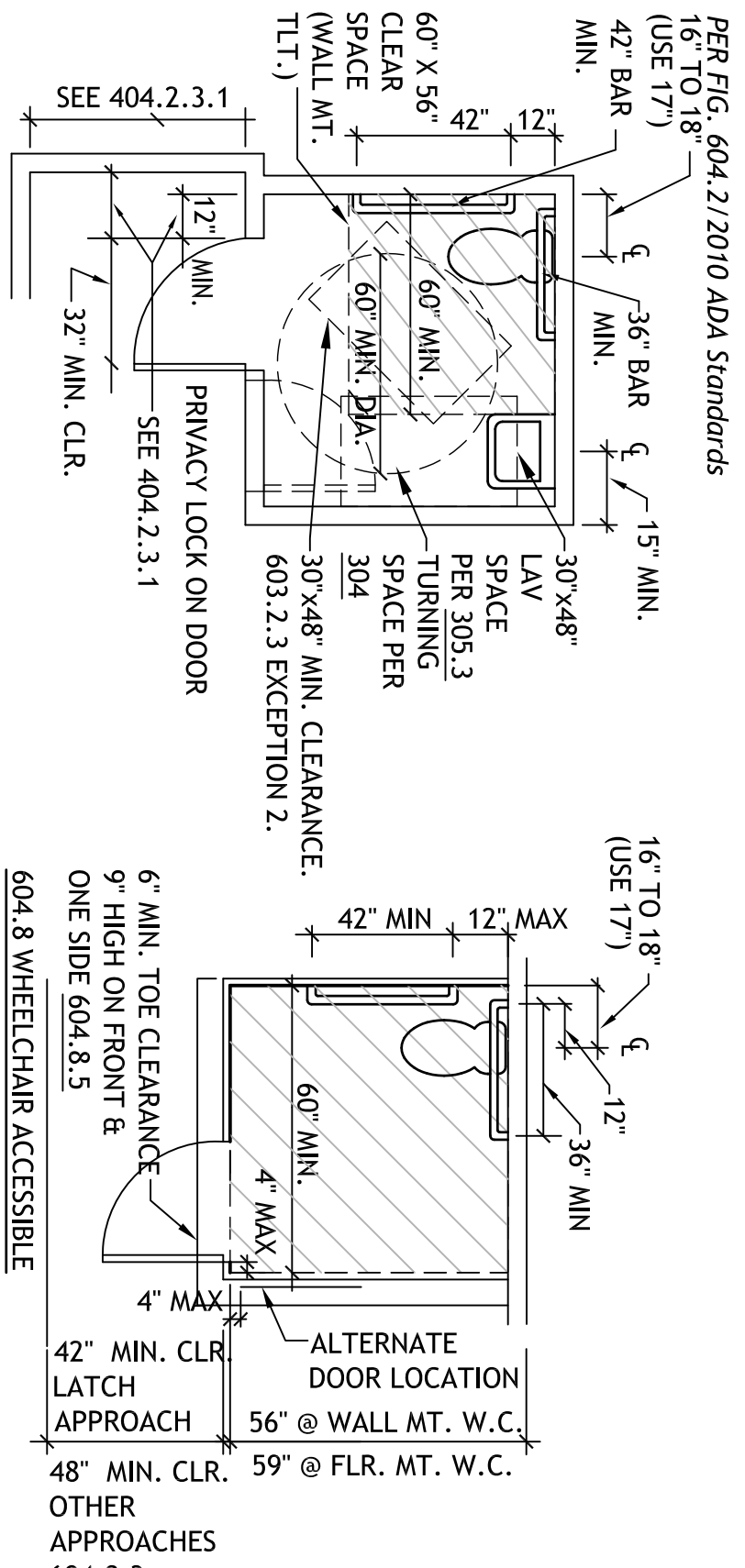
602 DRINKING FOUNTAINS

PROVIDE AT LEAST ONE COMBINATION "HOT" WATER COOLER PER FLOOR. HALF SHALL BE ACCESSIBLE FROM WHEELCHAIRS & HALF FOR PEOPLE WITH LIMITED ABILITY TO STOOP.)

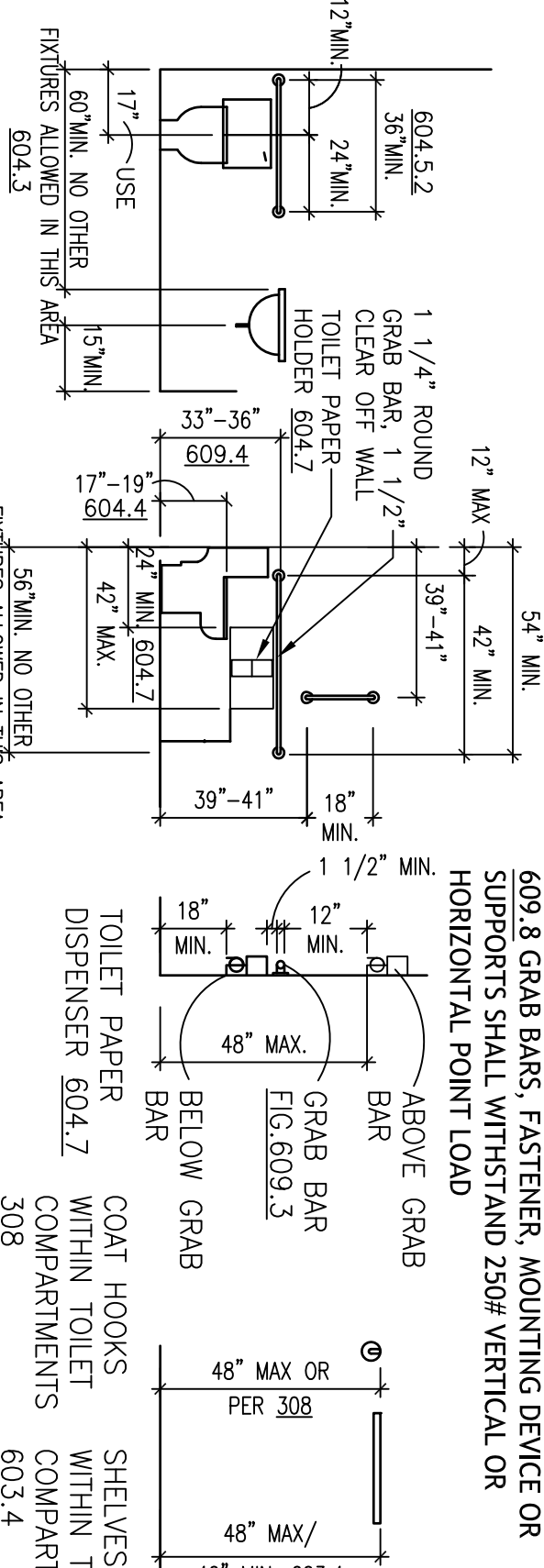


DRINKING FOUNTAINS 602, 307 [602 ADA Standards]

IF DRINKING FOUNTAINS ARE NOT IN ACCESS, OR IF THEY EXTEND MORE THAN 4" OUT OF ACCESS, ADD BAILING OR SCREEN WALL TO COMPLY W/ 307.2 OVERLAP. DOORS SHALL NOT SWING INTO CLEAR FLOOR SPACE OR CLEARANCE FOR ANY FIXTURE, EXCEPT IN SINGLE OCCUPANT TOILETS. DOORS MAY SWING INTO REQUIRED TURNING SPACE.



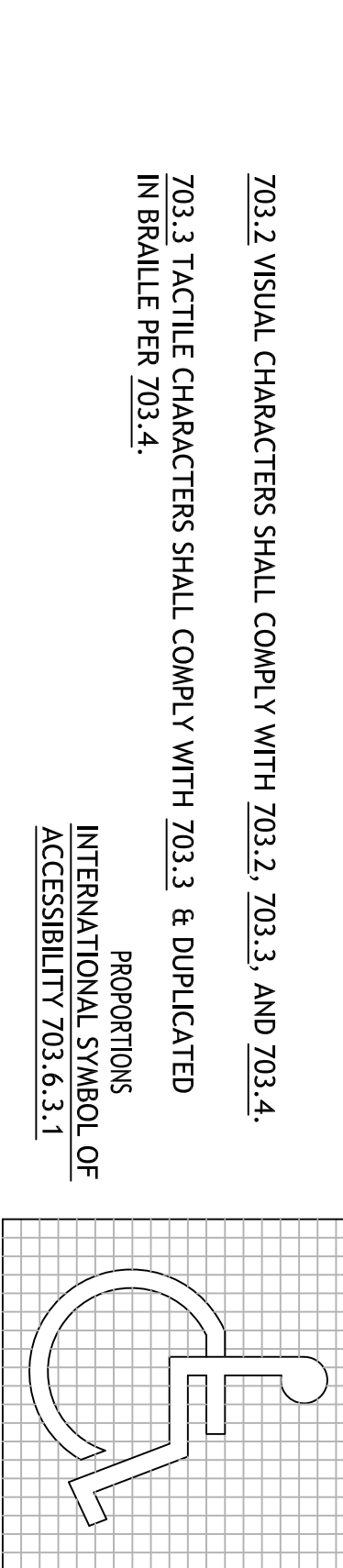
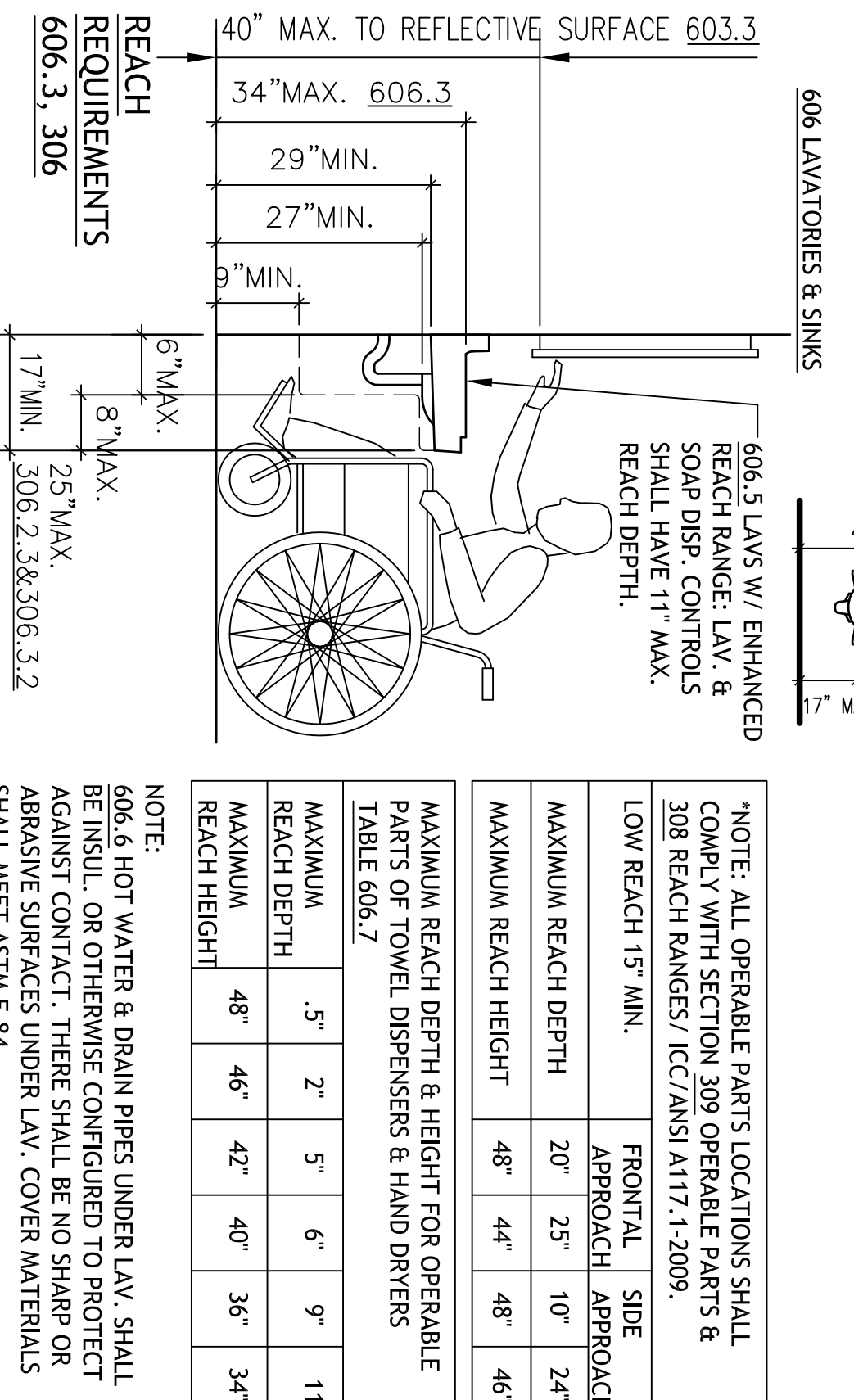
PRIVACY TOILET



WATER CLOSET CLEARANCES

NOTE: THESE FIGURES ARE ILLUSTRATIVE ONLY AND DO NOT DELINEATE THE ONLY MEANS OF COMPLIANCE. REFER TO PLANS FOR EXACT LAYOUT OF TOILET ROOMS.

605 *ADA Standards* URINALS SHALL BE 13 1/2" MIN. DEPTH.



INFECTION CONTROL NOTES

1. Remediation of hazardous material will be the responsibility of the VA. There are no known locations of hazardous material in these work areas. However, it is the contractor's responsibility to identify suspected material to be tested.

Suspect areas include:

- Preexisting flooring underneath existing wall/partitions.
- Backing behind/below radiator units.
- Existing chases.

2. The Contractor shall be aware and take precautions in these areas.

3. Lead has been discovered in the glazing of ceramic tile. It can be disposed of as an unregulated item.

4. The construction dumpster will be provided by the VA. No hazardous materials may be placed in the dumpster.

5. The Contractor shall be responsible for notification and permitting for removal of hazardous materials.

6. The Contractor will be responsible for complying with the infection control matrix/checklist.

7. The Contractor will be required to follow the standard VA badge ID, requirements and security procedures.

8. The Contractor will be required to follow the standard lock-out/tag-out procedures.

9. The Contractor shall provide:

- Asbestos testing for additional suspicious material discovered during demolition/construction and name certified testing agency.

- Contractor to submit name of asbestos removal contractor for Owner approval.

- Unit prices for additional asbestos testing and removal.

- Negative pressure/HEPA air filtration.

- Secured jobsite.

- Hot work permit.

- Schedule for hot work and utility interruptions.

- Securing and removal of hazardous material from the jobsite including fluorescent bulbs.

- Approved flammable material storage locker.

- OSHA certified "competent person" on the jobsite at all times during work.

- Attendance for 48 hour notice prior to asbestos abatement for minor abatement and one week notice for major abatement to give notify unions.

10. VA will provide a lockset for the Contractor to use on the dust partition or site entrance door. VA will provide the keys for these locks.

11. Where applicable, the Contractor will secure stairway doors from the stair side to prohibit entry into a construction area.

12. Hot work will require a permit which will be issued by the VA engineering office.

13. The Contractor will be required to notify the VA when smoke detectors will need to be shut down during activities which might cause activation of the smoke detector.

14. The Contractor shall be aware that a flammable storage cabinet will be required to be provided on site such that any hazardous materials brought to the jobsite, such as adhesives, aerosols, flammables, etc. will be stored in the flammable storage cabinet.

15. Fluorescent light tubes will be considered hazardous materials and will be removed as such. These materials will be labeled as "universal waste" and handled to avoid breakage.

16. The "safety preconstruction meeting checklist" will be included in the contract specifications and reviewed at the preconstruction meeting.

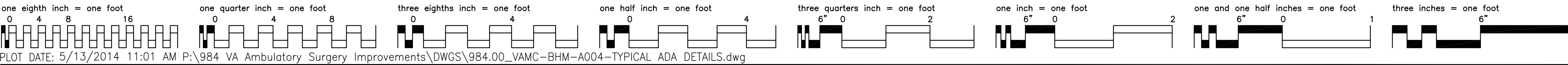
17. Negative air machines will be provided where negative air is required within a project site. Multiple units shall be provided such that the machines are not expected to cover more than 1,200 to 1,800 square feet of project area.

18. General contractor and subcontractors are required to attend the preconstruction meeting.

19. A "competent person" having completed the 30 hour OSHA course shall be on site at all times when work is being performed.

16. General contractor and subcontractors are required to attend the preconstruction meeting.

19. A "competent person" having completed the 30 hour OSHA course shall be on site at all times when work is being performed.



PLOT DATE: 5/13/2014 11:01 AM P:\984 VA Ambulatory Surgery Improvements\DWGS\984.00_VAMC-BHM-A004-TYPICAL ADA DETAILS.dwg

Revisions	Date

CONSULTING ENGINEERS:



LBVD, Inc.
Civil and Structural Engineers
710 South Main Street
Birmingham, AL 35203
Phone: (205) 261-4500
Fax: (205) 324-4181
© copyright 2002

SSOE, Inc.

3804 7th Avenue South
Birmingham, AL 35222
Phone: (205) 963-5555
Project # 010-0105100



ARCHITECT:



CM Architects, Inc.
1205 9th Avenue South
Birmingham, AL 35203
Phone: (205) 963-5555
Fax: (205) 963-5555
www.cmarchitects.com
Copyright © 2011 CM Architects, Inc.

PROJECT MANAGEMENT:



WALKER AND MOORE, INC.
PROJECT MANAGEMENT
11800 Central Expressway
Montgomery, Alabama 36105
Telephone: 334.366.6099
Fax: 334.366.6099
www.walkerandmoore.com

Typical ADA DETAILS AND INFECTION CONTROL NOTES

Approved Project Director

James Zellander

Project Title	Project Number
A/E AMBULATORY SURGERY IMPROVEMENTS	521-328
Location	Building Number
VAMC - Birmingham, Alabama	0000000000
Date	Drawing Number
5/23/2014	A004
Checked: bea	Drawn: gah
DWG 07 of 104	Office of Construction and Facilities Management