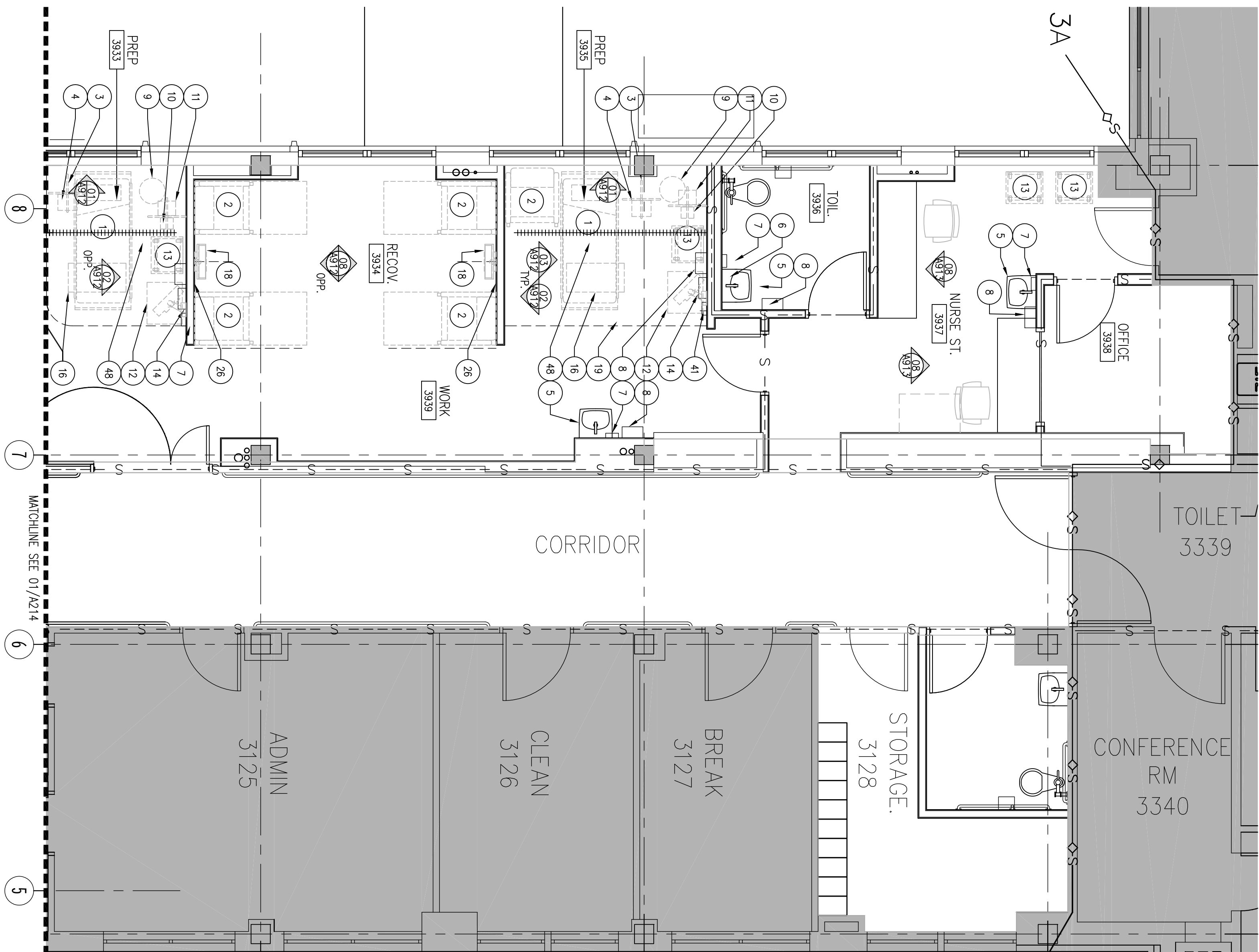
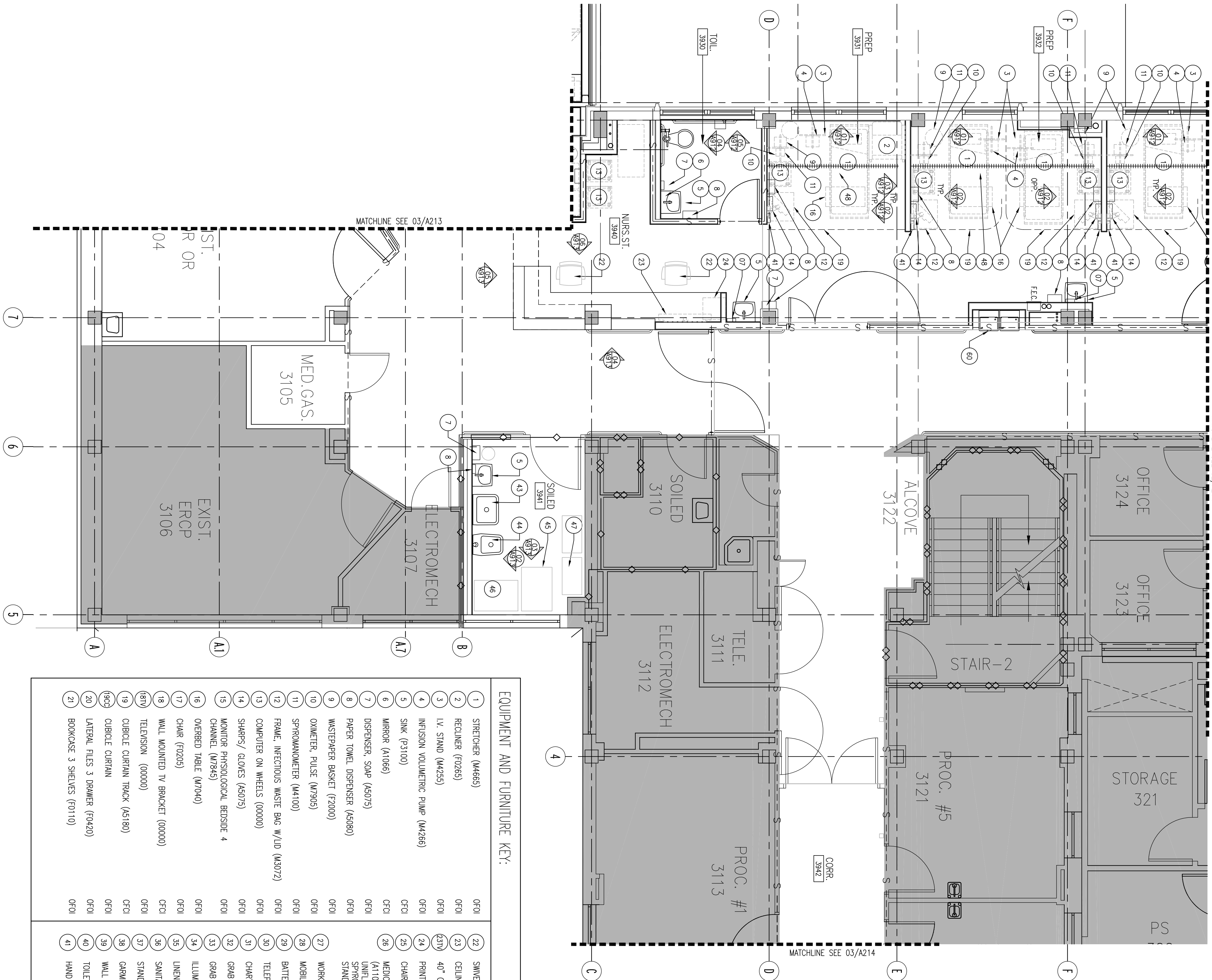


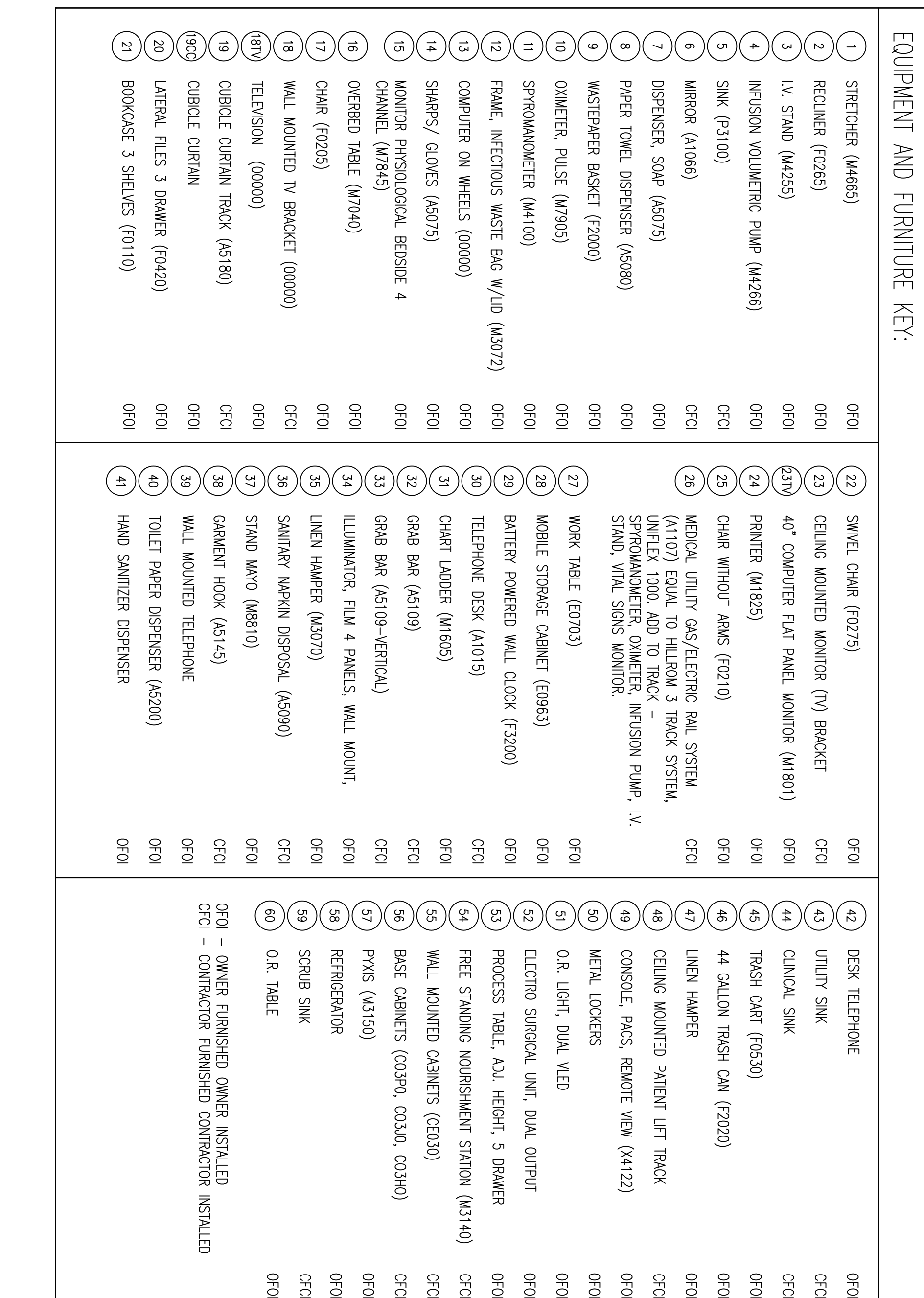
03 THIRD FLOOR EQUIPMENT PLAN
SCALE: 1/4" = 1'-0"



03 THIRD FLOOR EQUIPMENT PLAN



01 THIRD FLOOR EQUIPMENT PLAN



EQUIPMENT AND FURNITURE KEY:

1	STRETCHER (M466)	070	22	SMEL. CHAIR (7227)	070	42	DESK TELEPHONE	070
2	RECLINER (7026)	070	23	CEILING MOUNTED MONITOR (TV) BRACKET	070	43	UTILITY SINK	070
3	LV. STAND (M425)	070	24	40" COMPUTER FLAT PANEL MONITOR (M180)	070	44	CINCLIC SINK	070
4	INFUSION VOLUMETRIC PUMP (M426)	070	25	PRINTER (M425)	070	45	TRASH CART (7053)	070
5	SINK (7310)	070	26	CHAIR WITHOUT ARMS (7021)	070	46	44 GALLON TRASH CAN (7202)	070
6	MIRROR (A106)	070		MEDICAL UTILITY GAS/ELECTRIC RAIL SYSTEM (A1107) EQUAL TO HILTILOK 3 TRACK SYSTEM, UNLESS 1000 ADD TO TRACK - SPROINGMADDER, CANKER, INFUSION PUMP, LV. SINK, VIAL SINK MONITOR.	070	47	UNEN HAMMER	070
7	DISPENSER, SOAP (A507)	070				48	CEILING MOUNTED PATIENT LIFT TRACK	070
8	PAPER TOWEL DISPENSER (A498)	070				49	CONSOLE, PAGES, REMOVE VIEW (A412)	070
9	WASTEPAPER BASKET (7200)	070	27	WORK TABLE (0703)	070	50	METAL LOCKERS	070
10	COMETER, PULSE (M105)	070	28	MOBILE STORAGE CABINET (096)	070	51	O.R. LIGHT, DUAL HEAD	070
11	SPRINGMADDER (M400)	070	29	BATTERY POWERED WALL CLOCK (7320)	070	52	ELECTRO SURGEOL UNIT, DUAL OUTPUT	070
12	FRAME, MEDICIOUS WAST BAG W/ID (A5072)	070	30	TELEPHONE DESK (A1015)	070	53	PROCESS TABLE, ADJ. HEIGHT, 5 DRAWER	070
13	COMPUTER ON WHEELS (00000)	070	31	CHAIR (A408)	070	54	FREE STANDING NOURISHMENT STATION (M414)	070
14	SHAPERS / GLOVES (A5075)	070	32	CHART LADDER (M465)	070	55	BASE CABINETS (C03FO, C03AO, C03HO)	070
15	MONITOR PHYSIOLOGICAL BEDSIDE 4 CHANNEL (M785)	070	33	ORAL BAR (A5109)	070	56	WALL MOUNTED CABINETS (E03X)	070
16	OVERHEAD TABLE (M7040)	070	34	ILLUMINATOR, FLUO 4 PANELS, WALL MOUNT.	070	57	PANIS (M3150)	070
17	CHART (70205)	070	35	UNEN HAMMER (A507)	070	58	REFRIGERATOR	070
18	WALL MOUNTED TV BRACKET (00000)	070	36	SANITARY WAPIN DISPOSL (A509)	070	59	SRIB SINK	070
19	TELEVISION (00000)	070	37	STAND WATO (M6810)	070	60	O.R. TABLE	070
20	CUBICLE CURTAIN (A5180)	070	38	GARGENT HOOK (A5145)	070			
21	CUBICLE CURTAIN	070	39	WALL MOUNTED TELEPHONE	070			
22	LATERAL FILES 3 DRAWER (71420)	070	40	TOILET PAPER DISPENSER (A5200)	070			
23	BOOKCASE 3 SHELVES (70110)	070	41	HAND SANITIZER DISPENSER	070			

CONSTRUCTION DOCUMENTS - 100% FINALS FULLY SPRINKLERED

CONSULTING ENGINEERS:		ARCHITECT:		PROJECT MANAGEMENT:		Drawing Title THIRD FLOOR EQUIPMENT PLAN		Project Number 521-328		Office of Construction and Facilities Management	
SSOE, Inc. 104 Thimble Shoar Bldg 200, Suite 2022 Birmingham, AL 35203 Phone: 205/333-3373 Project # 13241051.00		CMH Architects, Inc. 1000 17th Avenue Birmingham, AL 35203 Phone: 205/969-3456 - TEL 205/969-3456 - FAX www.cmharch.com Copyright © 2011 CMH Architects, Inc.		WALKER AND MOORE INTERIOR DESIGN PROJECT MANAGEMENT 1000 17th Avenue Birmingham, Alabama 35203 Telephone: 205/969-3456 Fax: 205/969-3456 www.walkerandmoore.com		Approved Project Director James Zellender		Drawing Number A214		Department of Veterans Affairs	
LEYD, Inc. Oil and Structural Engineers 716 South 30th Street Birmingham, AL 35233 Phone: 205/924-4500 Fax: (205) 324-4181 © copyright 2002		STATE OF ALABAMA Bearing 1/20 Recorded JAN 10 2014		PROJECT MANAGEMENT		Location YAMC - Birmingham, Alabama		Checked bea		Department of Veterans Affairs	
Date						Date 5/23/2014		Dwg. Cdd of 124			