

PLOT DATE: 5/13/2014 2:00 PM P:\984 VA Ambulatory Surgery Improvements\DWGS\984.00\_VAMC-BHM-A412-WALL SECTIONS.dwg

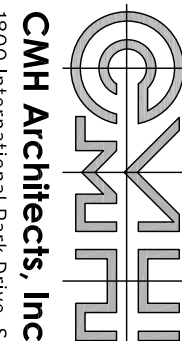
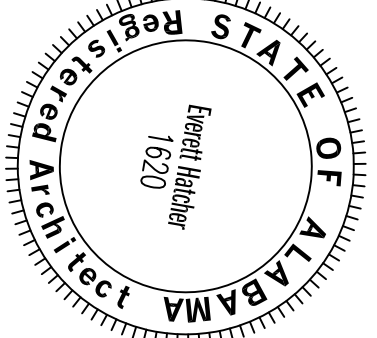
VA FORM 08-6231

[illegible]

# CONSULTING ENGINEERS



**LBYD, Inc.**  
Civil and Structural Engineers  
716 South 30th Street  
Birmingham, AL 35233  
Main (205) 251-4500  
Fax (205) 324-1811




1800 International Park Drive, Suite 300  
Birmingham, AL 35243  
(205)969-2696 • TEL  
(205)969-3930 • FAX  
www.cmharcl.com  
Copyright © 2011 CMH Architects, Inc.

ARCHITECT:



**WALKER AND MOORE**  
PROJECT MANAGEMENT

1100 Laurel Lane    Montgomery, Alabama 36106    Telephone: 334.380.4379    Facsimile: 334.264.5565

The logo for Walker and Moore Project Management features a stylized blue and red circular emblem with a white 'W' in the center, surrounded by the words 'WALKER AND MOORE' and 'PROJECT MANAGEMENT' in a circular arrangement.

## PROJECT MANAGEMENT:

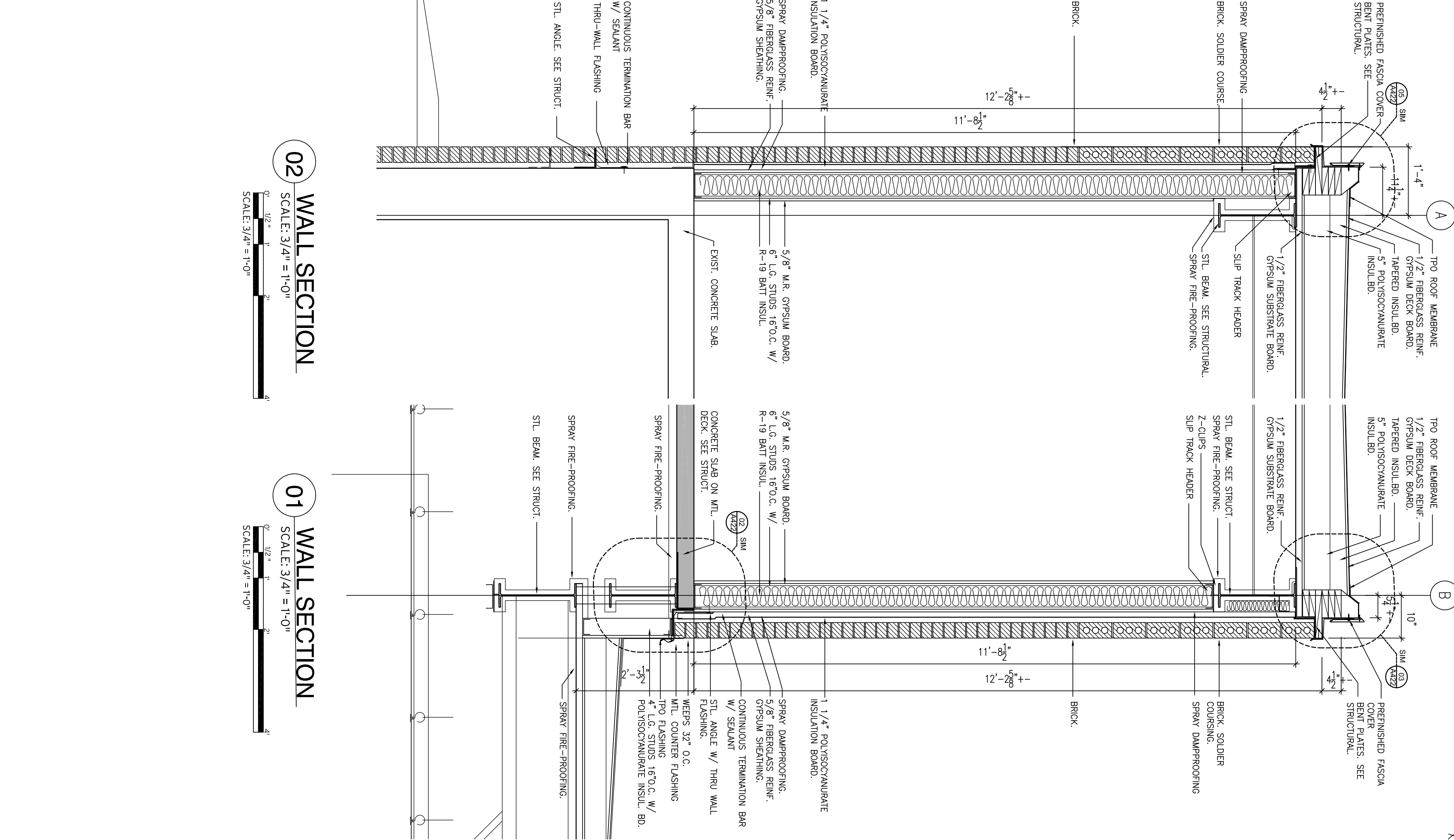
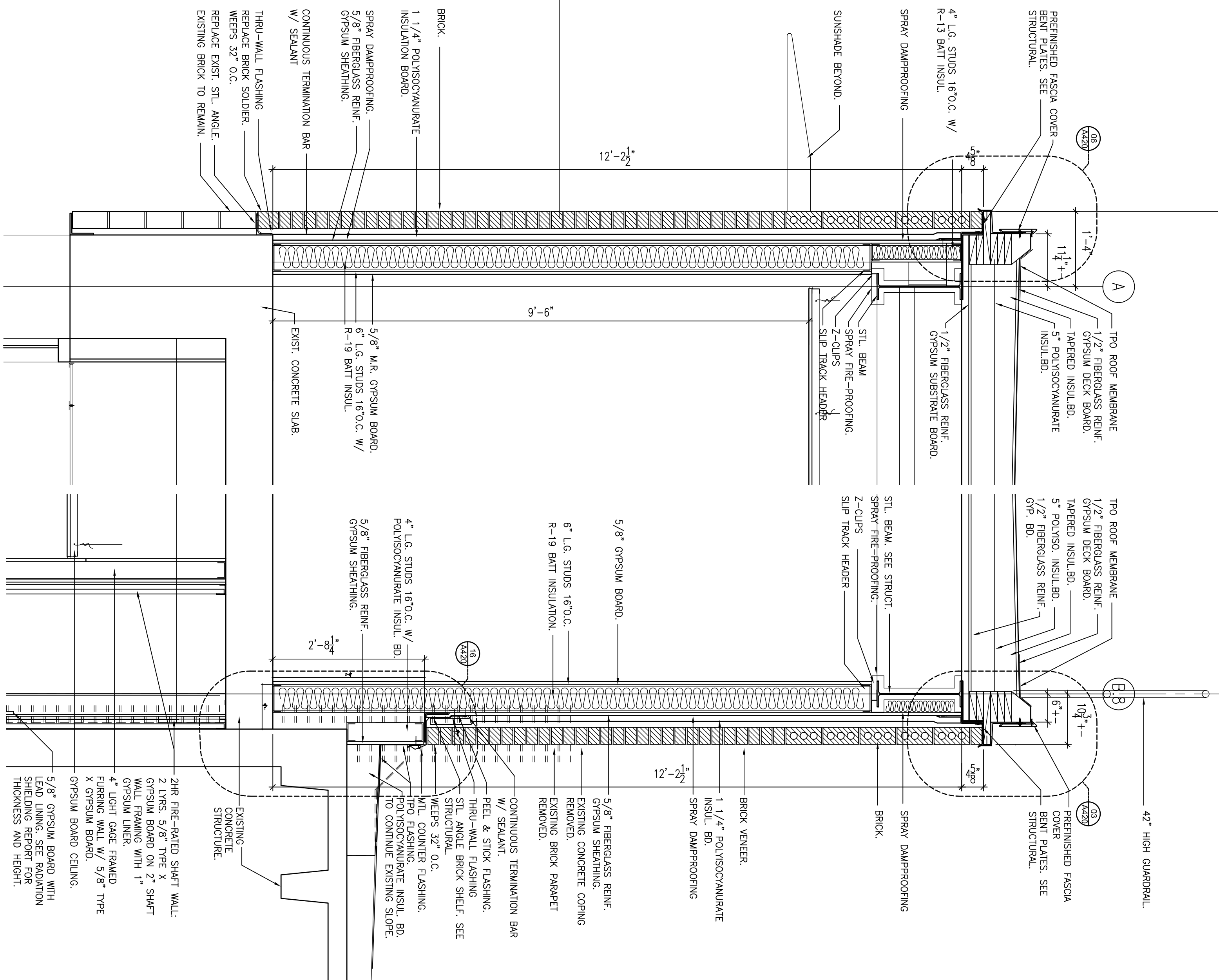
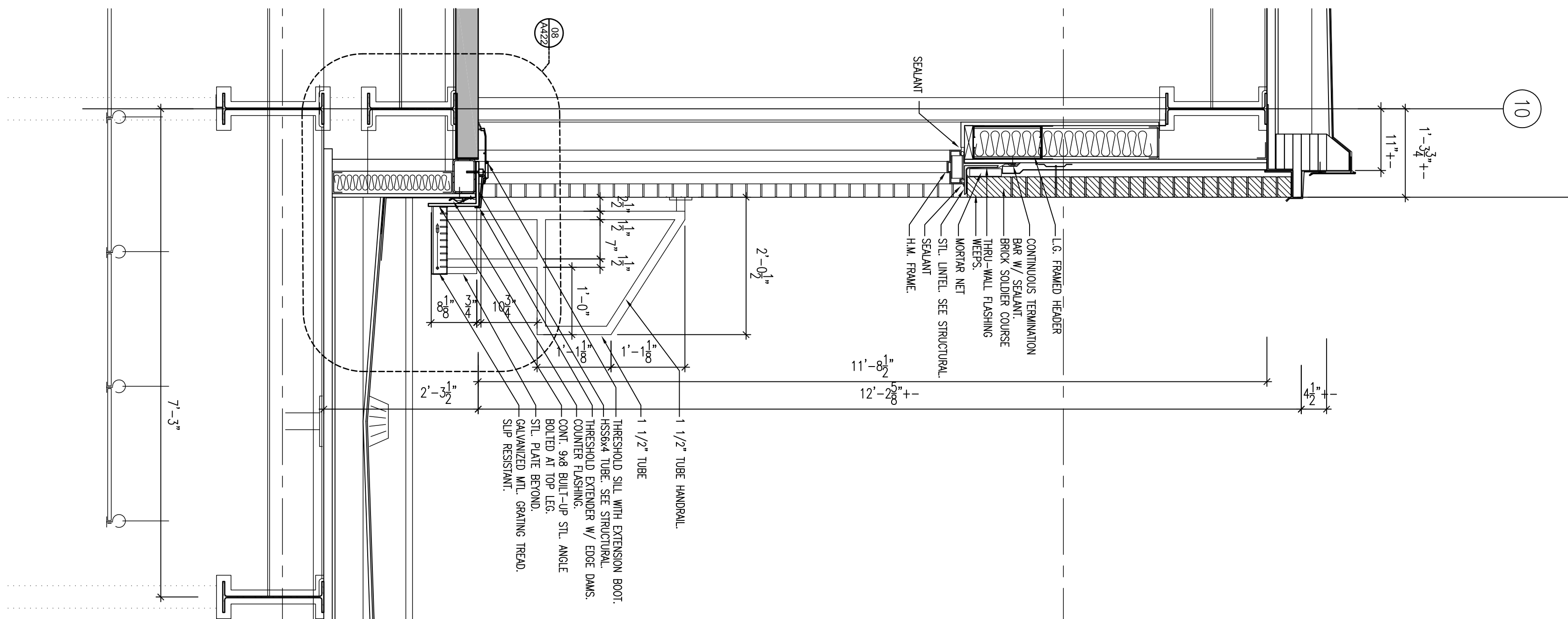
## WALL SECTIONS

Approved: Project Director  
James Zellander


CONSTRUCTION DOCUMENTS - 100% FINALS FULLY SPRINKLERED

Project Title  
A/E AMBULATORY SURGERYProject Number  
521-328Drawing Number  
A 410A412  
Dwg. 052 of

Office of




**04 WALL SECTION**  
SCALE: 3/4" = 1'-0"



0' 1/2" 1" 2' 4'

SCALE: 3/4" = 1'-0"

**03 WALL SECTION**  
SCALE: 3/4" = 1'-0"  
  
SCALE: 3/4" = 1'-0"

**02 WALL SECTION**  
SCALE: 3/4" = 1'-0"  
  
SCALE: 3/4" = 1'-0"

**01 WALL SECTION**  
SCALE: 3/4" = 1'-0"