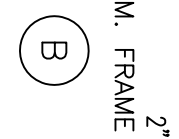
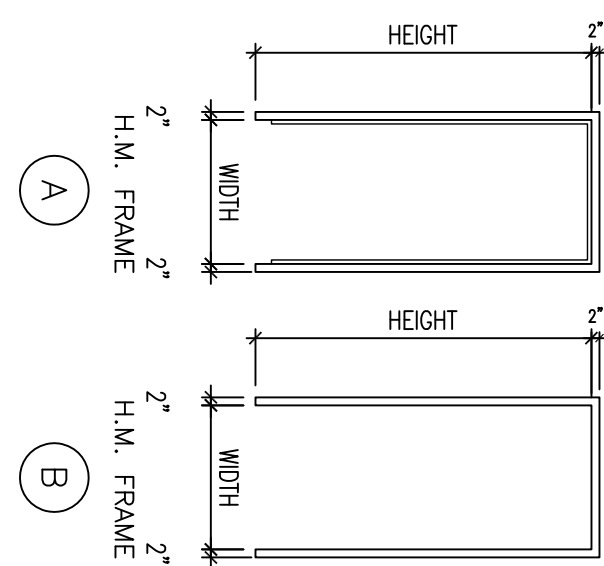
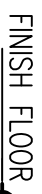
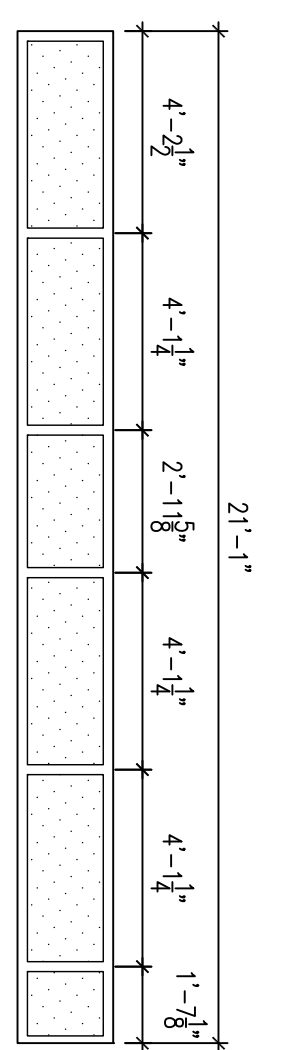
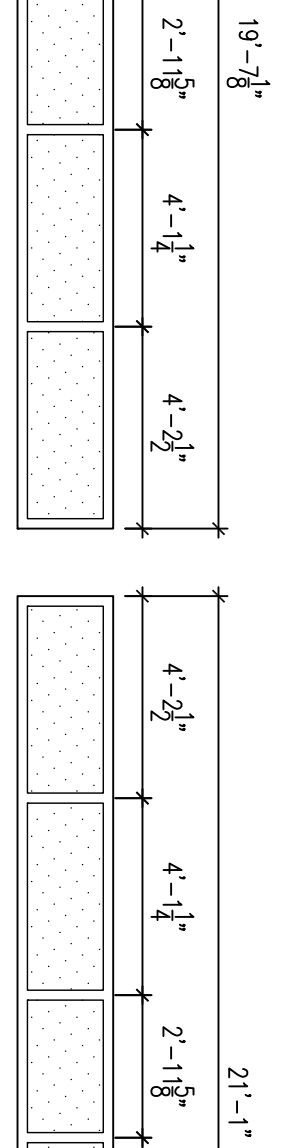
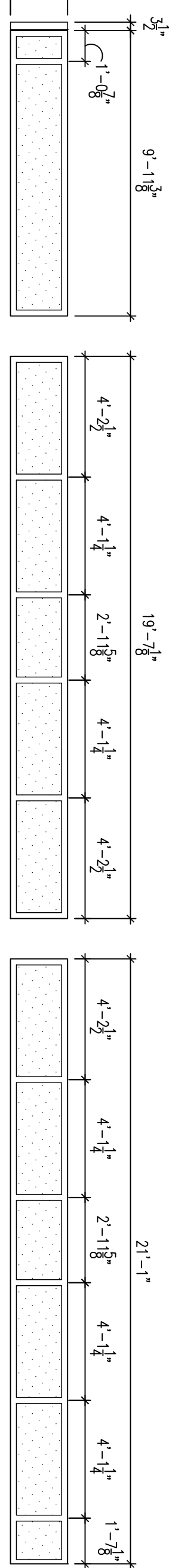
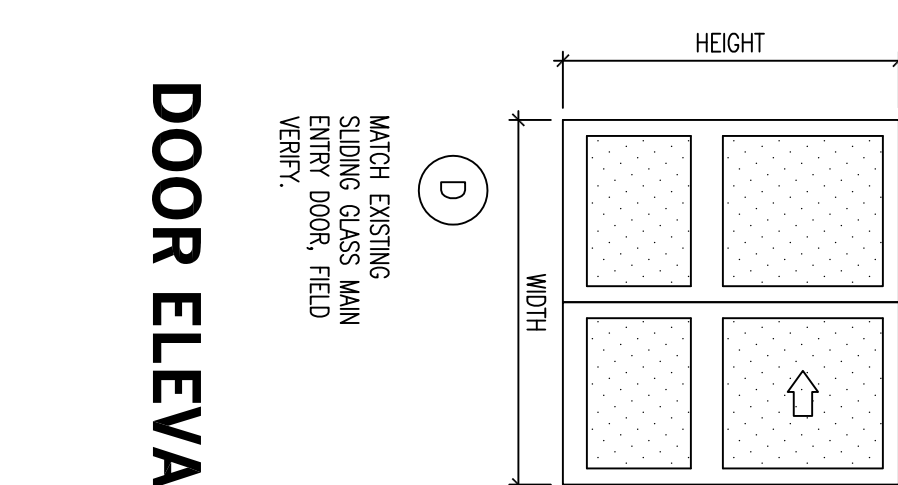
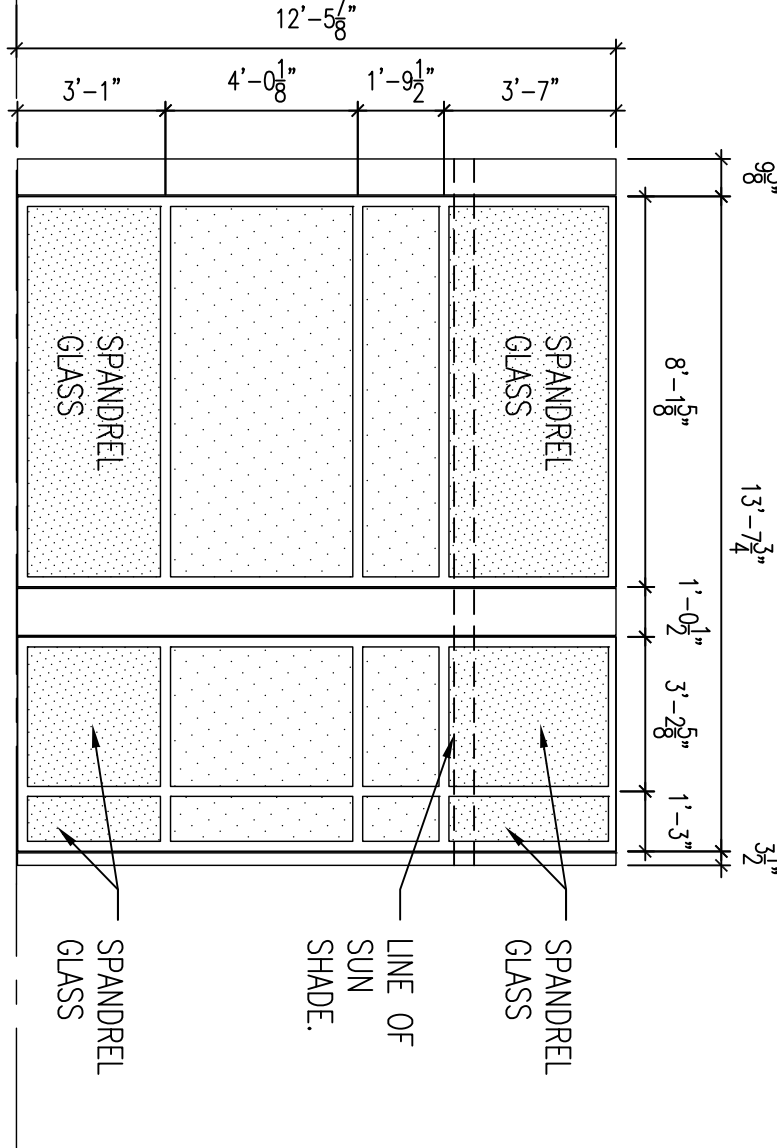
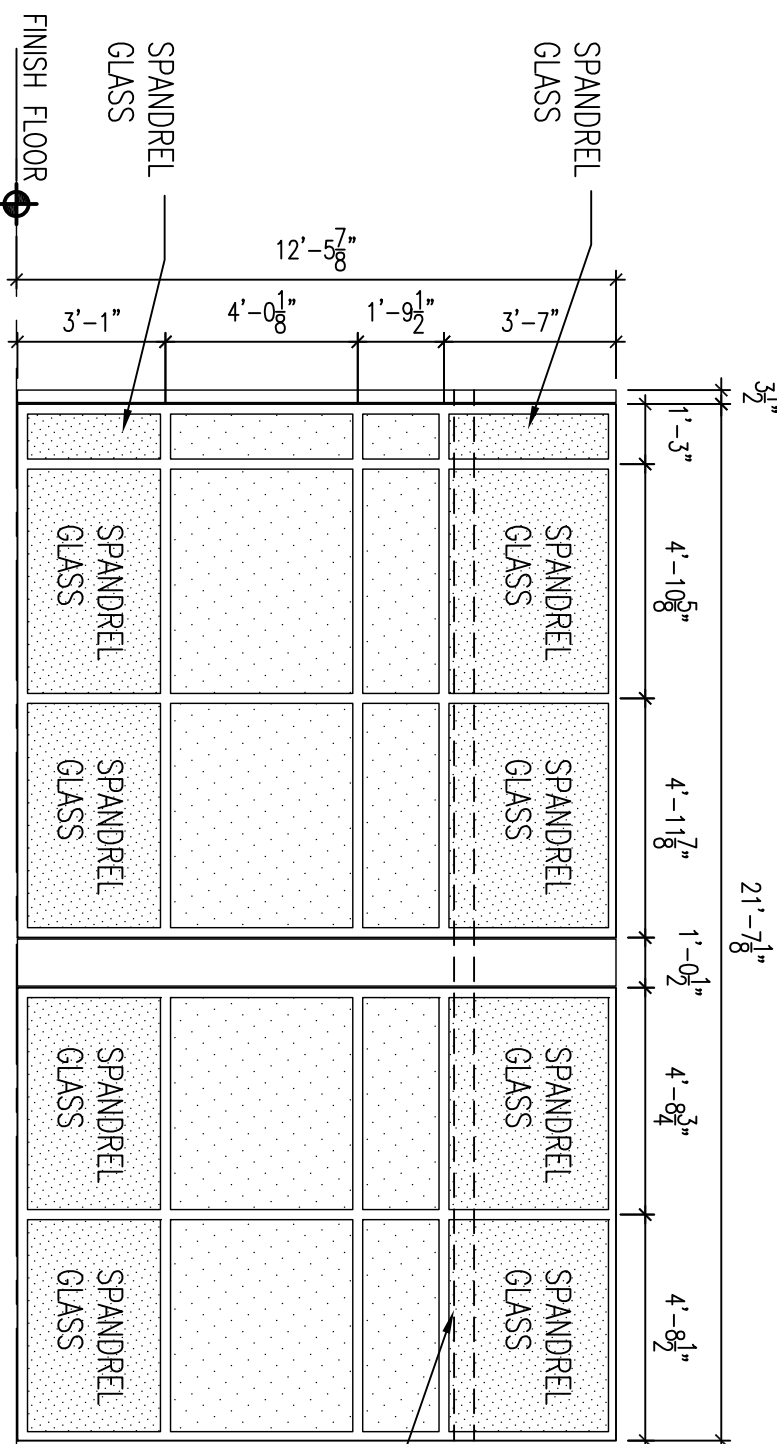
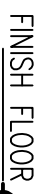
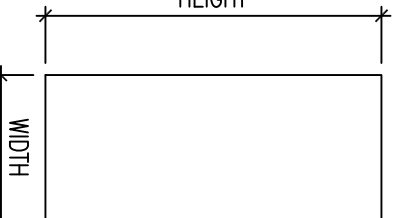
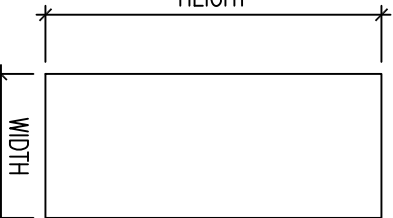
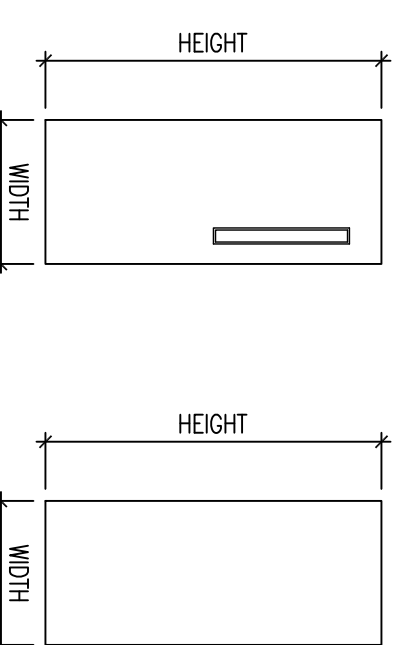


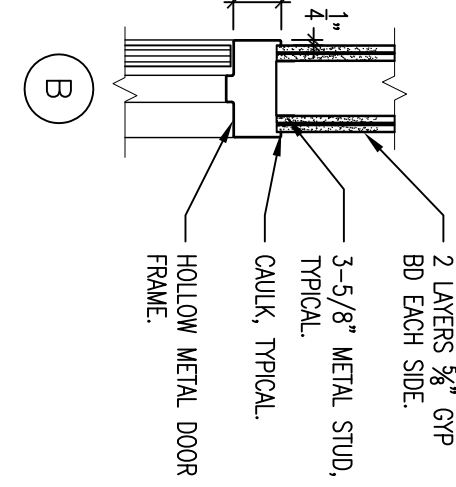
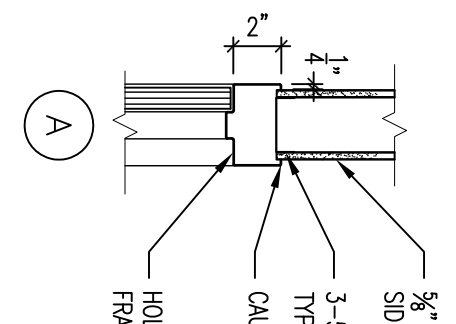
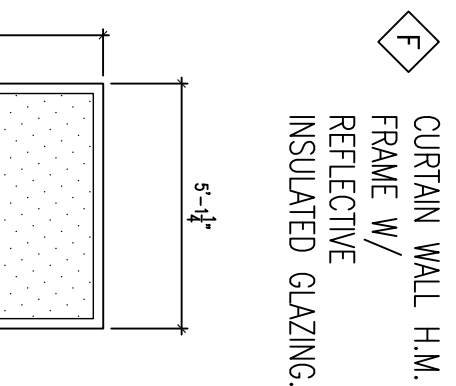
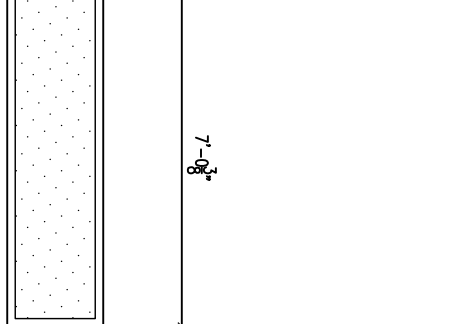
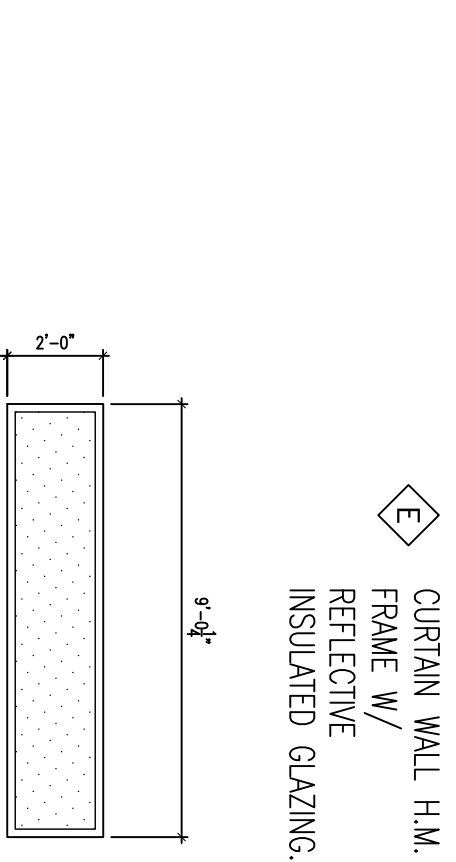
PLOT DATE: 5/13/2014 2:46 PM P:\984 VA Ambulatory Surgery Improvements\DWGS\984.00_VAMC-BHM-A800-DOOR AND WINDOW DETAILS AND SCHEDULES.dwg



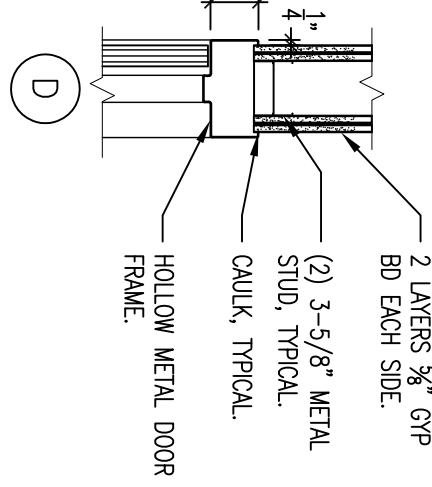
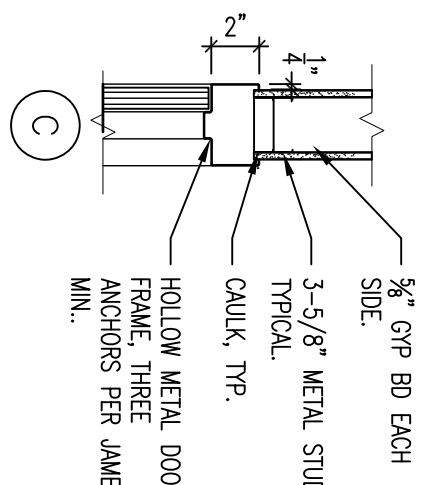
FRAME ELEVATIONS



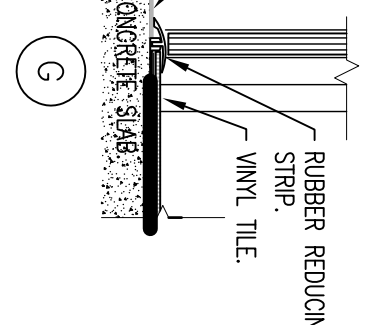
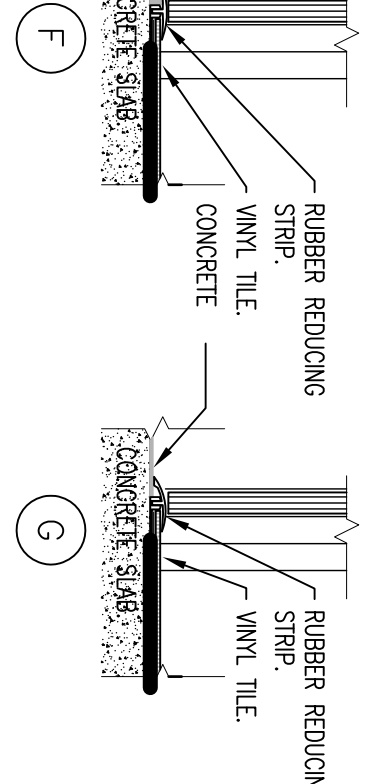
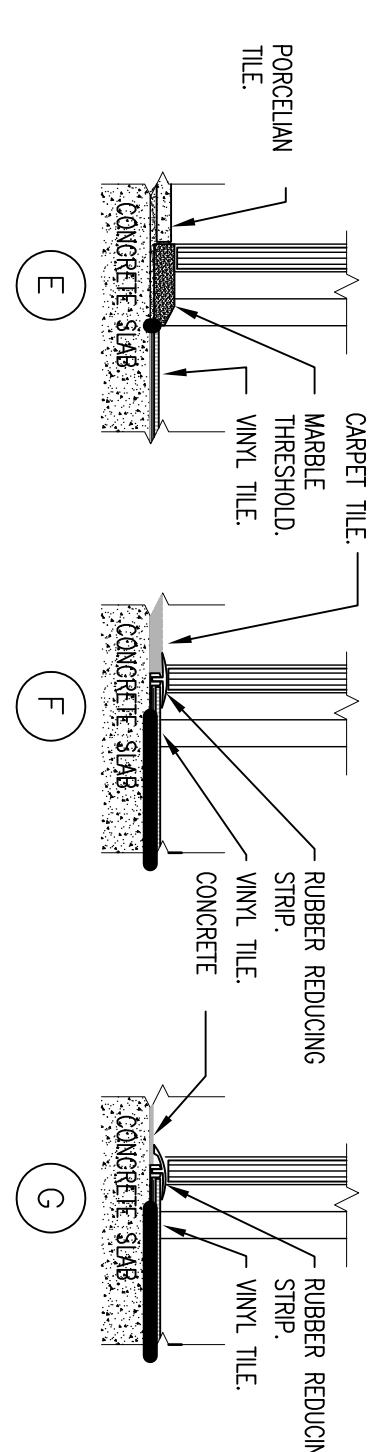
DOOR ELEVATIONS N.T.S.



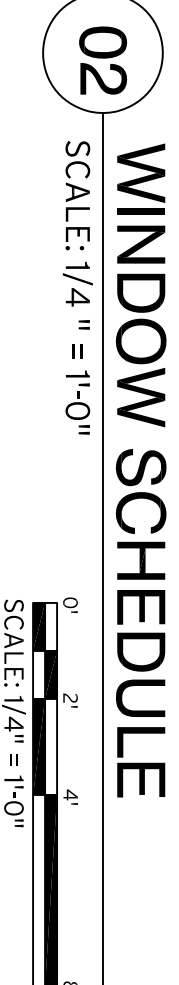
HEAD DETAILS



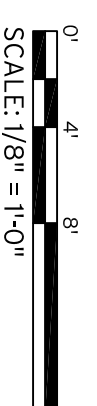
JAMB DETAILS



THRESHOLD DETAILS







DOOR SCHEDULE



DOOR SCHEDULE															
DOOR					FRAME					REMARKS					
ELEVATION	MATERIAL		FINISH	ELEVATION		DETAIL		HARDWARE	RATING		ROOM NUMBER				
	SIZE	HEIGHT		MATERIAL	HD	JB	TH								
NUMBER	WIDTH	HEIGHT													
FIRST FLOOR															
101	D	H.M.	F.V.	F.V.	-	-	-	-	-	-	1500	EXISTING SLIDING DOORS. PROTECT FOR REUSE. REPLACE IF NECESS.			
102	D	H.M.	F.V.	F.V.	-	-	-	-	-	-	1500	EXISTING SLIDING DOORS. PROTECT FOR REUSE. REPLACE IF NECESS.			
SECOND FLOOR															
201	B	WD	3'-0"	7'-0"	STAIN	A	H.M.	A	C	-	112	S	2509	OMITTED IF DEDUCTIVE ALTERNATE #2 ACCEPTED.	
201A	B	WD	3'-0"	7'-0"	STAIN	A	H.M.	A	C	-	113	1	HR	SHELL	DEDUCTIVE ALTERNATE #2
202	B	WD	3'-0"	7'-0"	STAIN	A	H.M.	A	C	-	112	2	S	2510	OMITTED IF DEDUCTIVE ALTERNATE #2 ACCEPTED.
202A	B	WD	3'-0"	7'-0"	STAIN	A	H.M.	A	C	-	113	1	HR	SHELL	DEDUCTIVE ALTERNATE #2
203	B	WD	3'-0"	7'-0"	STAIN	A	H.M.	A	C	-	112	2	S	2511	OMITTED IF DEDUCTIVE ALTERNATE #2 ACCEPTED.
204	B	WD	3'-0"	7'-0"	STAIN	A	H.M.	A	C	-	112	2	S	2512	OMITTED IF DEDUCTIVE ALTERNATE #2 ACCEPTED.
205	B	WD	3'-0"	7'-0"	STAIN	A	H.M.	A	C	-	112	2	S	2513	OMITTED IF DEDUCTIVE ALTERNATE #2 ACCEPTED.
206	B	WD	3'-0"	7'-0"	STAIN	A	H.M.	A	C	-	112	2	S	2514	OMITTED IF DEDUCTIVE ALTERNATE #2 ACCEPTED.
207	B	WD	3'-0"	7'-0"	STAIN	A	H.M.	A	C	-	113	2	S	2515	OMITTED IF DEDUCTIVE ALTERNATE #2 ACCEPTED.
208	B	WD	3'-0"	7'-0"	STAIN	A	H.M.	A	C	-	113	1	S	2516	OMITTED IF DEDUCTIVE ALTERNATE #2 ACCEPTED.
209	B	WD	3'-0"	7'-0"	STAIN	A	H.M.	A	C	-	113	3	S	2517	OMITTED IF DEDUCTIVE ALTERNATE #2 ACCEPTED.
210	B	WD	3'-0"	7'-0"	STAIN	A	H.M.	A	C	-	114			2518	OMITTED IF DEDUCTIVE ALTERNATE #2 ACCEPTED.
211	B	WD	3'-0"	7'-0"	STAIN	A	H.M.	A	C	-	112	2	S	2519	OMITTED IF DEDUCTIVE ALTERNATE #2 ACCEPTED.
212	B	WD	3'-0"	7'-0"	STAIN	A	H.M.	A	C	-	112	2	S	2520	OMITTED IF DEDUCTIVE ALTERNATE #2 ACCEPTED.
213	B	WD	3'-0"	7'-0"	STAIN	A	H.M.	A	C	-	112	2	S	2521	OMITTED IF DEDUCTIVE ALTERNATE #2 ACCEPTED.
214	B	WD	3'-0"	7'-0"	STAIN	A	H.M.	A	C	-	112	2	S	2522	OMITTED IF DEDUCTIVE ALTERNATE #2 ACCEPTED.

[illegible]

CONSULTING ENGINEERS:										ARCHITECT:										PROJECT MANAGEMENT:										Drawing Title				Project Number				Office of Construction and Facilities Management Department of Veterans Affairs																					
LBYPD, Inc. Civil and Structural Engineers Birmingham, AL 35222 716 South 30th Street Mobile (205) 251-4500 Main (205) 324-4181 Fax (205) 324-4181 © Copyright 2005										SSOE, Inc. Civil and Structural Engineers Birmingham, AL 35222 Project # 013-01051-00										 CWH Architects, Inc. 1000 Lakeside Drive Birmingham, AL 35243 (205)966-2950 - FAX (205)966-2950 - FAX www.cwha.com Copyright © 2003 CWH Architects, Inc.										 WALKER AND MOORE INTERIOR DESIGN PROJECT MANAGEMENT 1000 Lakeside Drive Montgomery, Alabama 36106 Telephone: 334-382-4999 Facsimile: 334-343-9400												DOOR AND WINDOW SCHEDULES AND DETAILS				Approved Project Director James Zellander				A/E AMBULATORY SURGERY IMPROVEMENTS				521-328 0000000000					
LBYPD										SSOE, Inc.										 Eugene Hilder 1620										 Eugene Hilder 1620										Door and Window Schedules and Details				Location YAMC - Birmingham, Alabama				Building Number 0000000000				Drawing Number A800				Dwg. 006 of 124			
Date										Date										Date										Date				Date				Date				Date																	