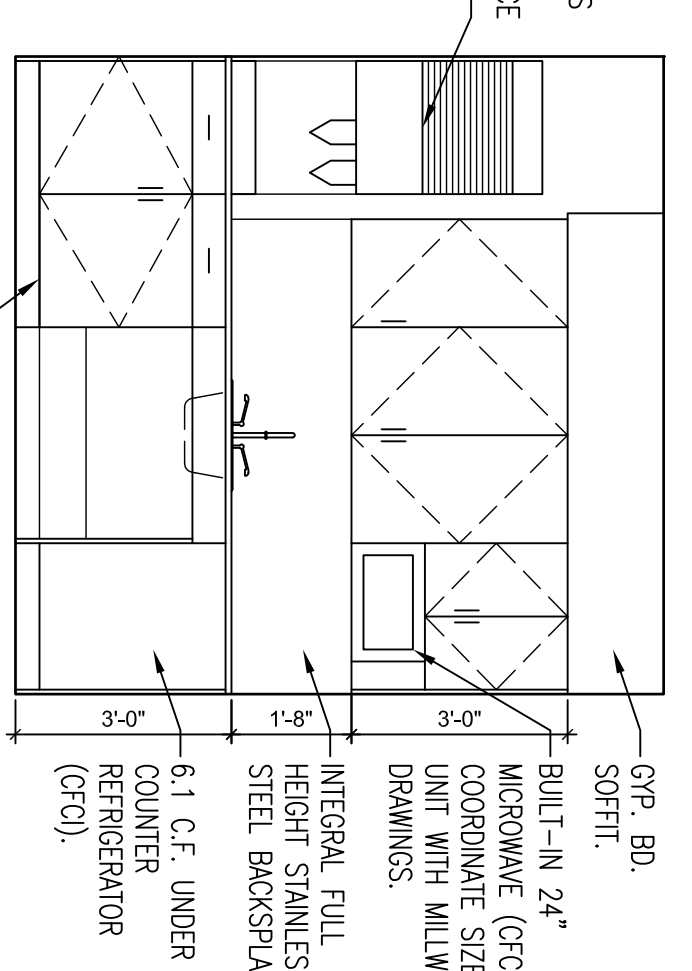
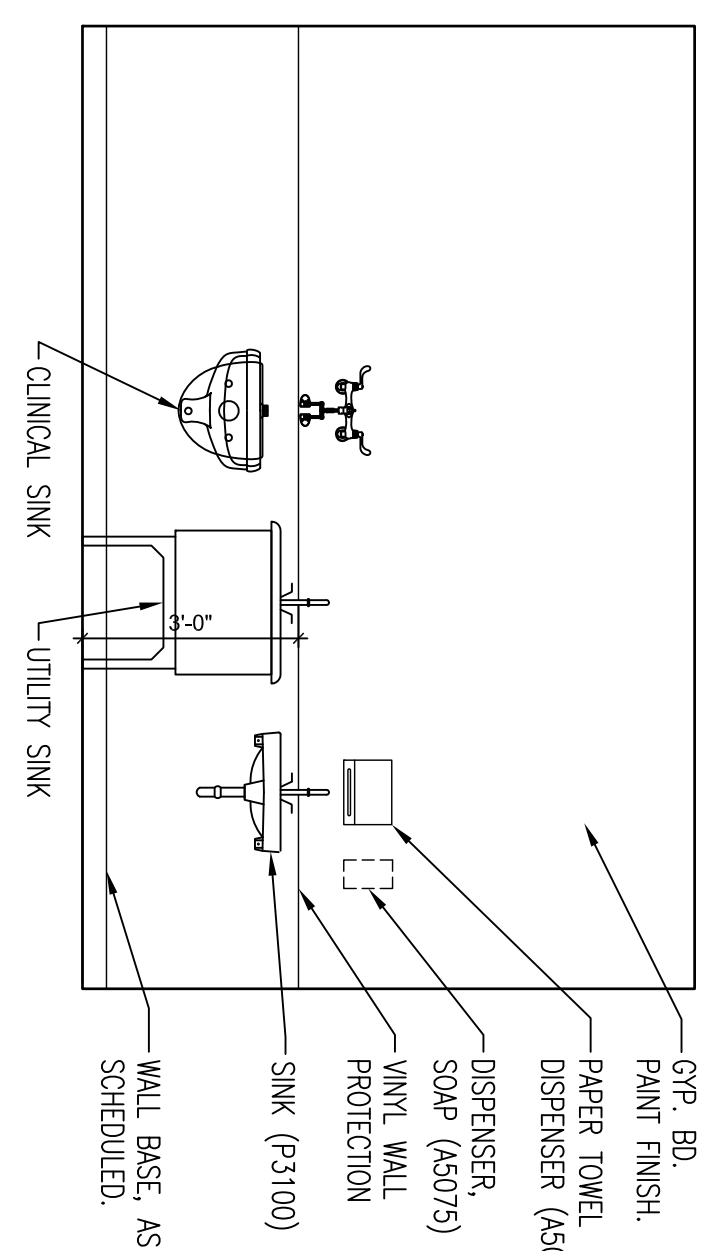
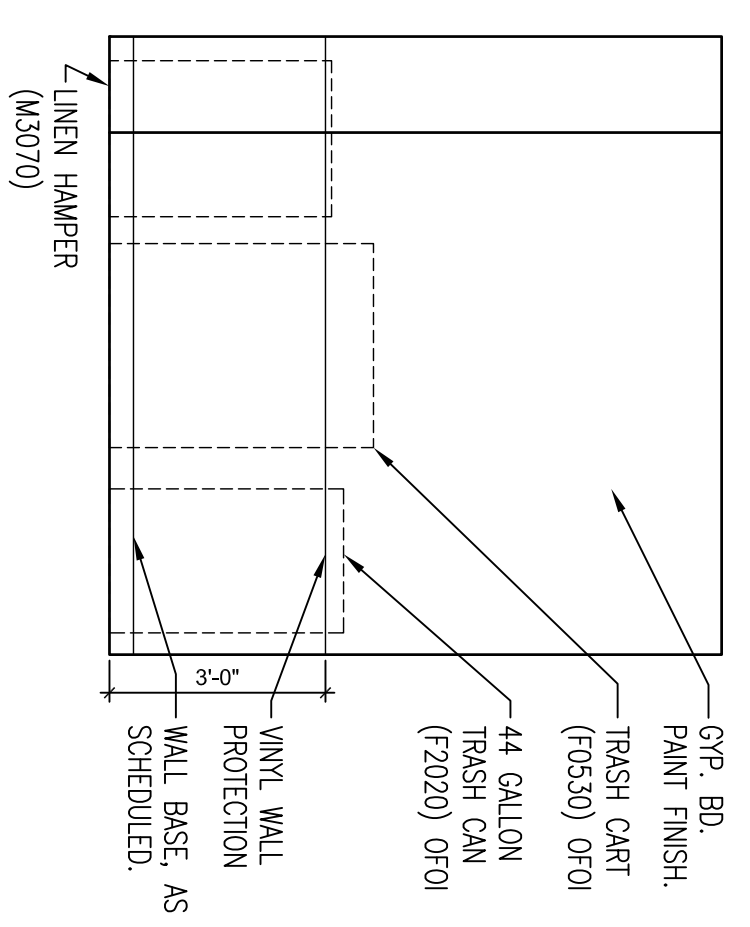
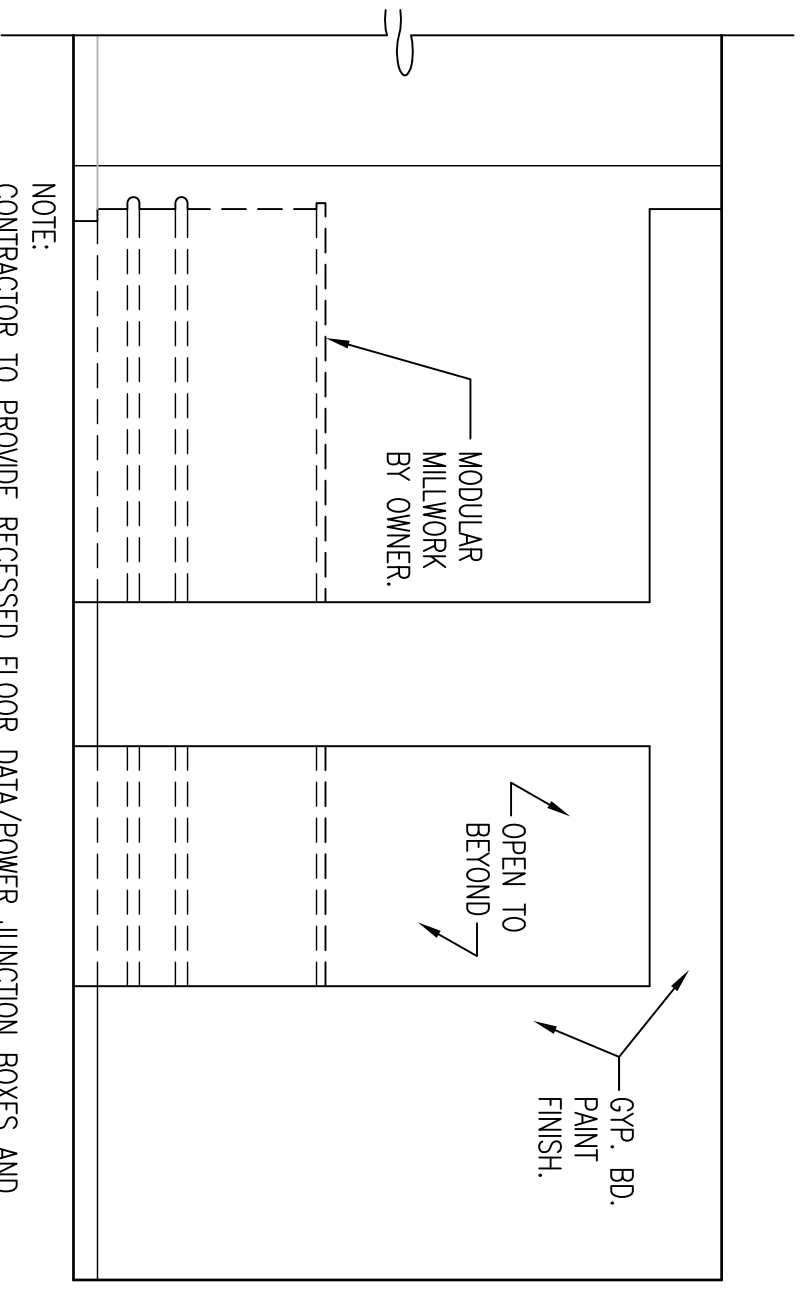
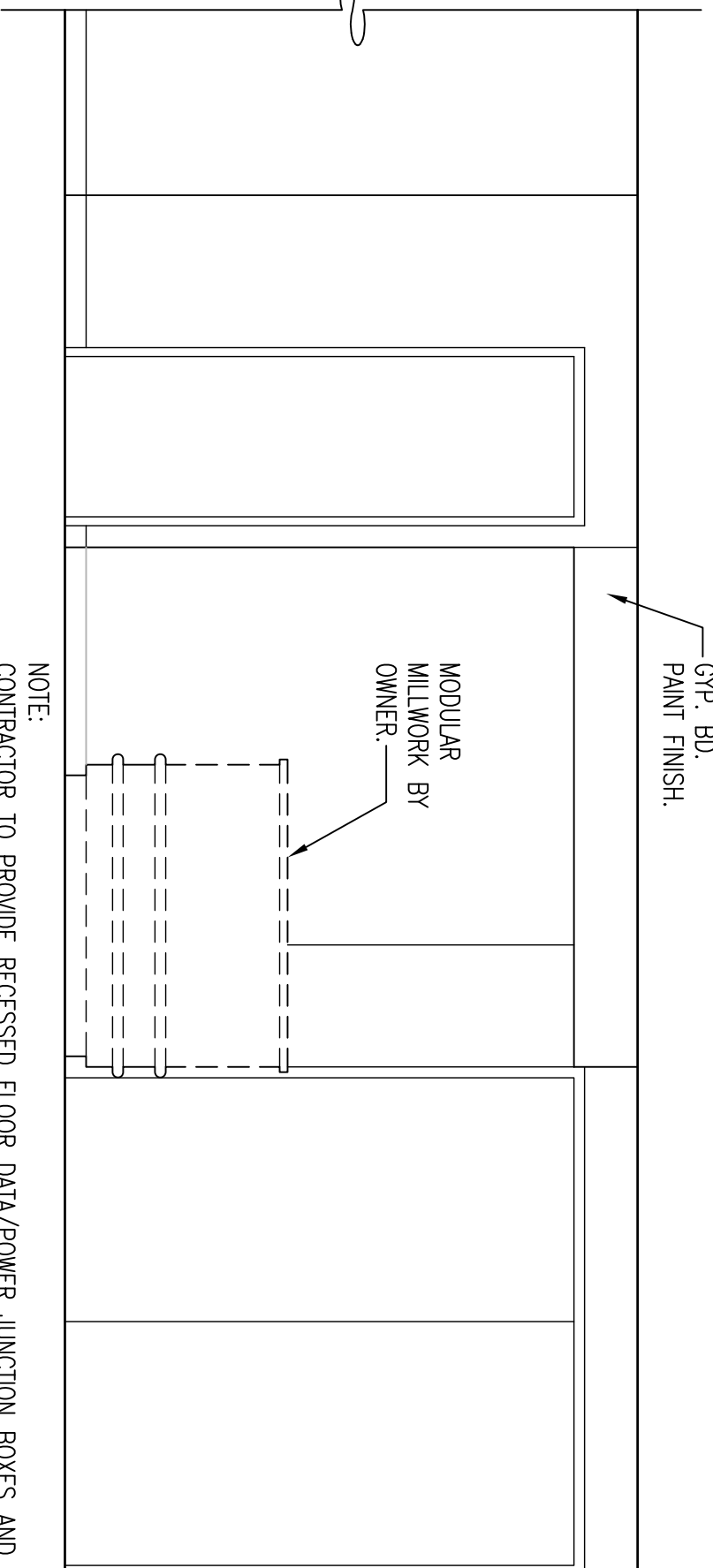
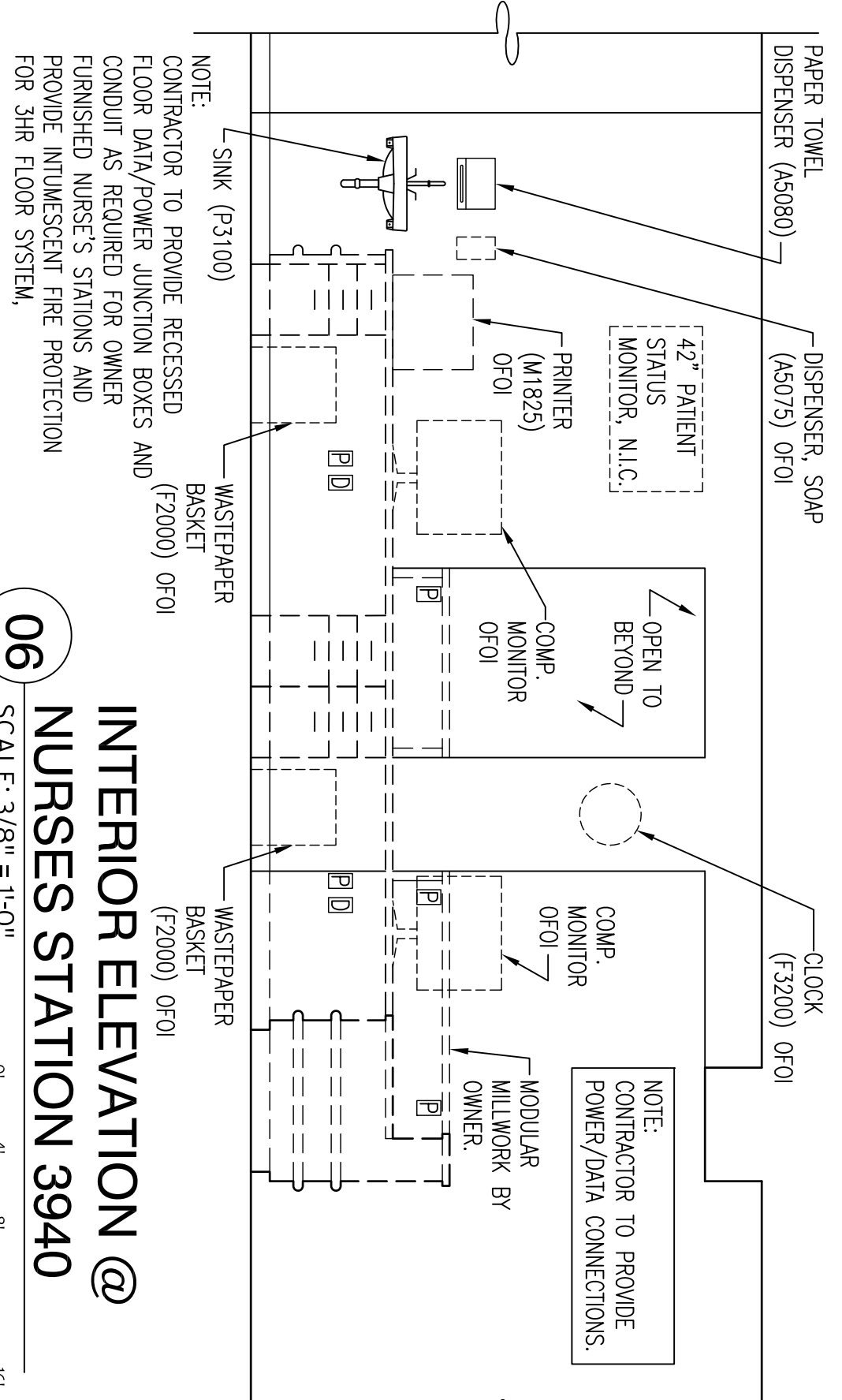
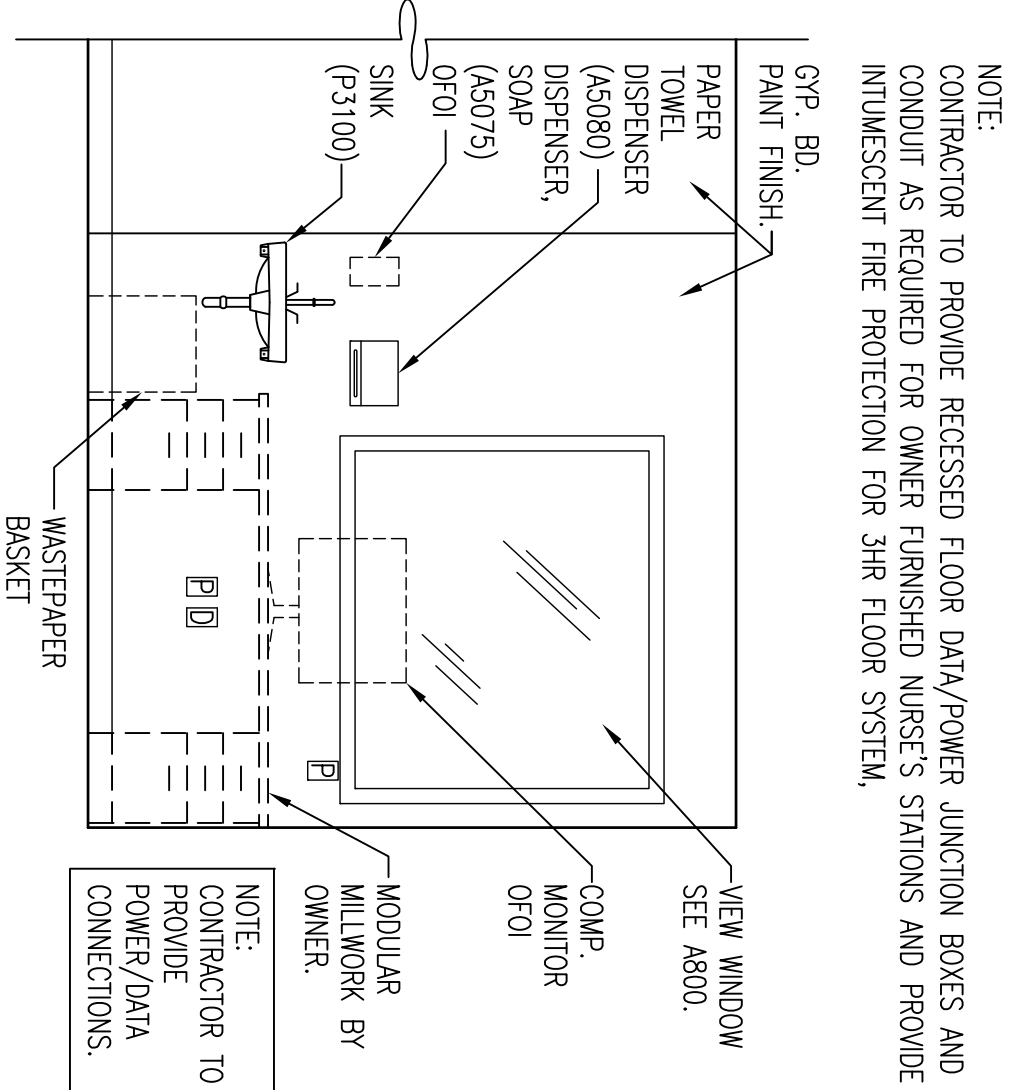
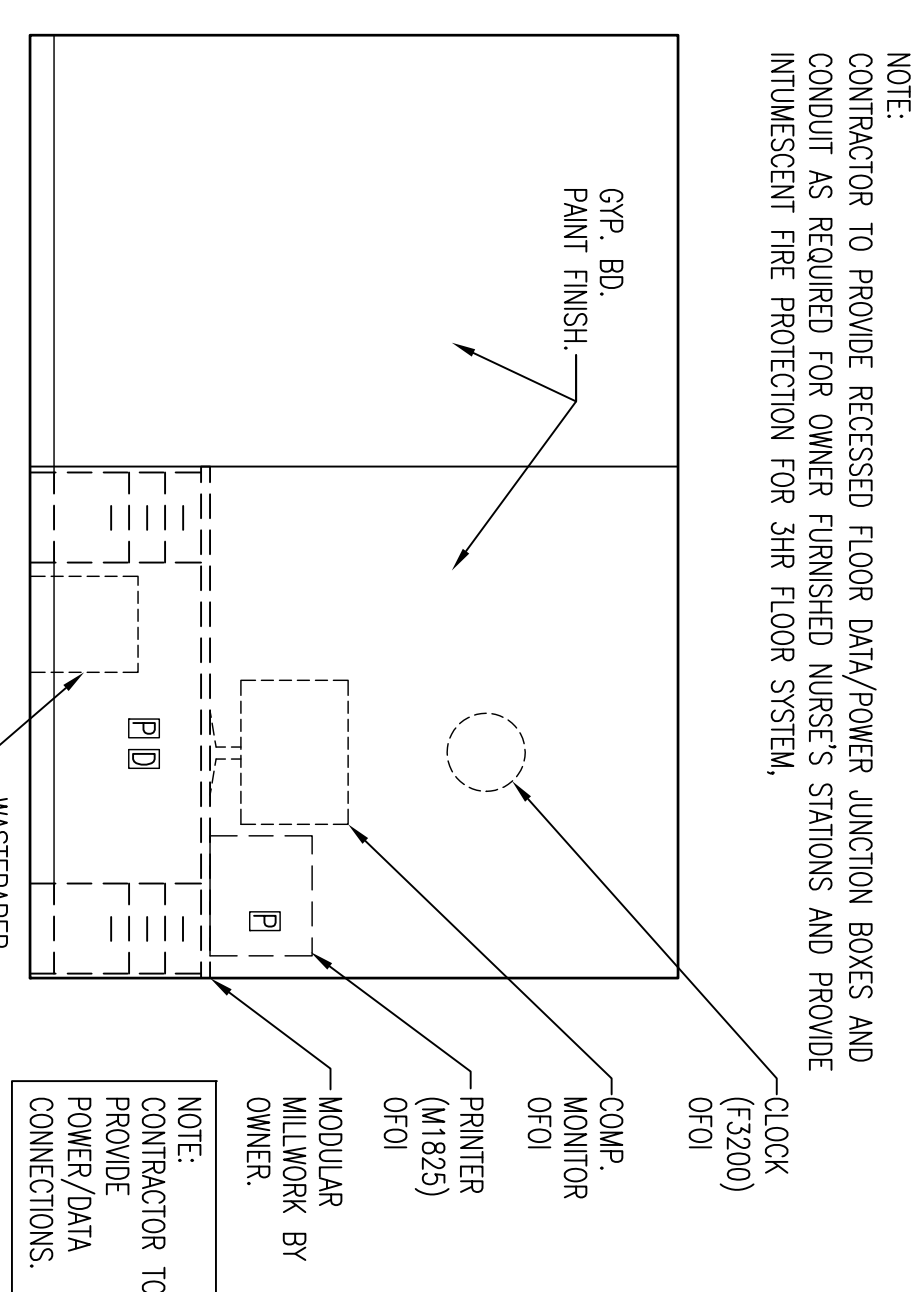
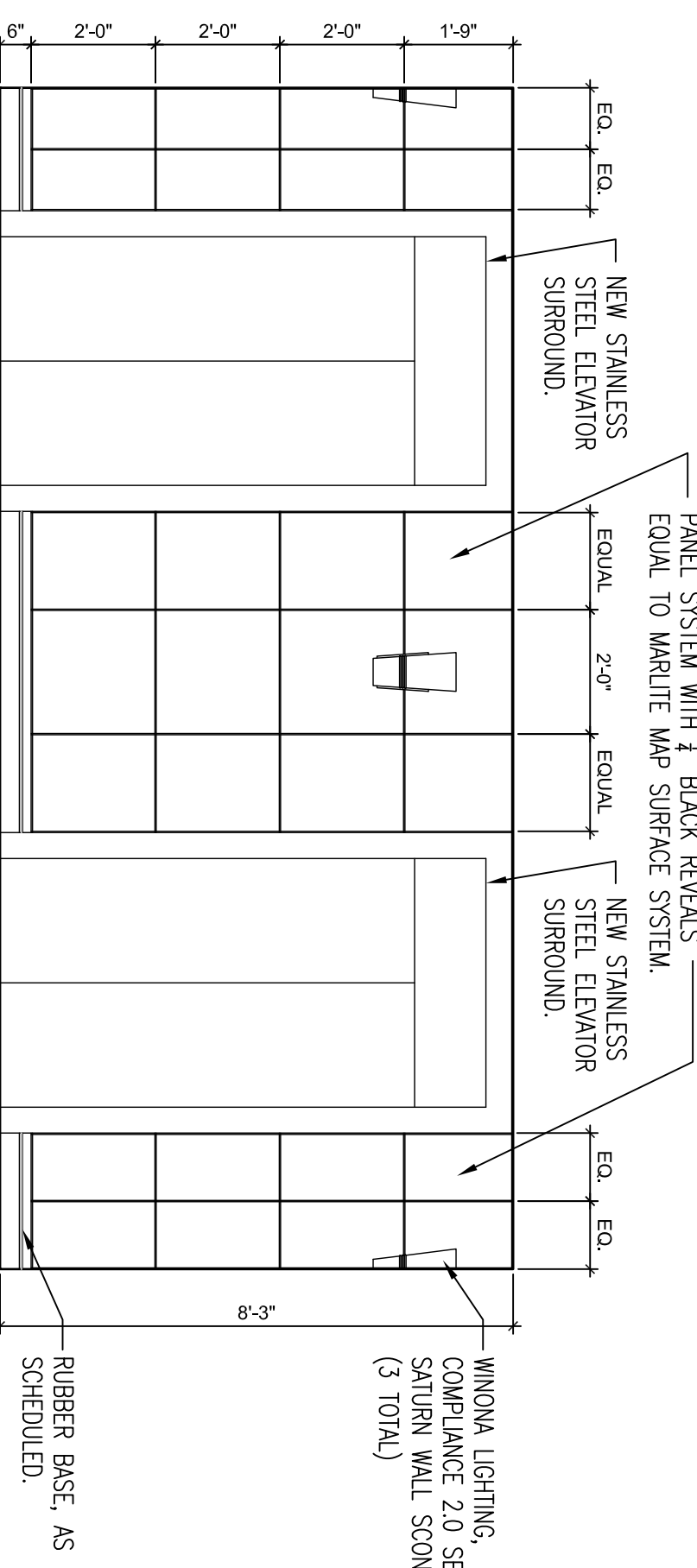
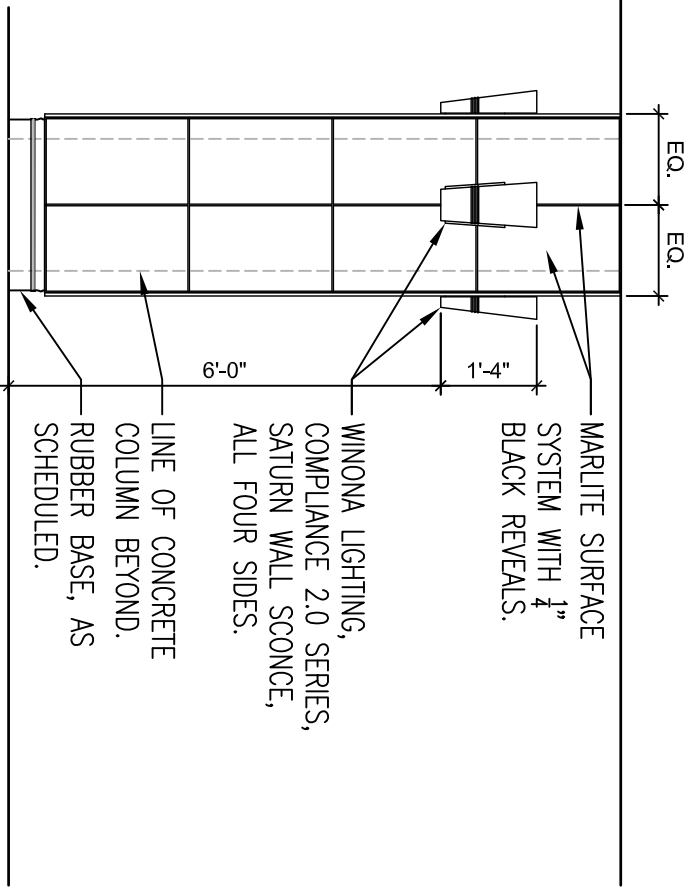
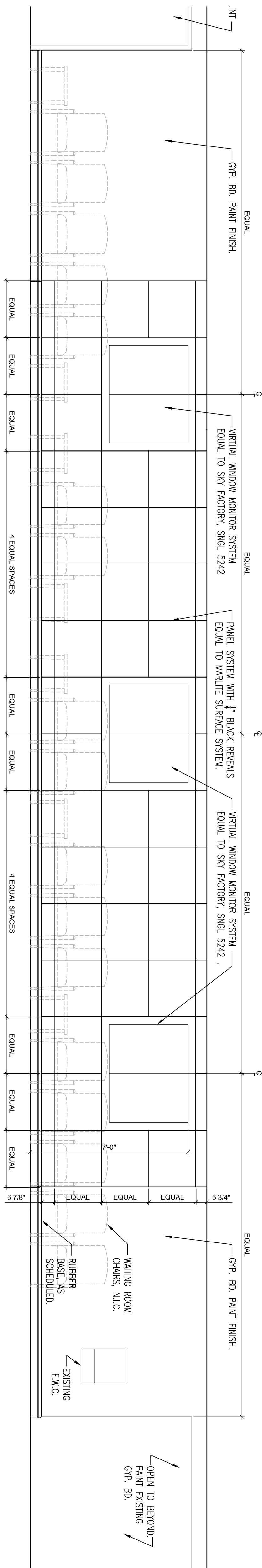


PLOT DATE: 5/13/2014 3:08 PM P:\984 VA Ambulatory Surgery Improvements\DWGS\984.00_VAMC-BHM-A913-INTERIOR ELEVATIONS.dwg

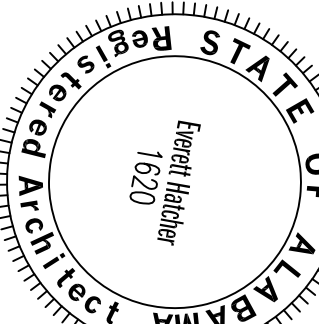
WALL OUTLET LEGEND	
B	OXYGEN (M0735)
A	AIR (M0750)
V	VACUUM (M0765)
C	CODE
S	BOTTLE SLIDE
M	NURSE CALL
D	DATA
N	CABLE TV
P	POWER
E	EMERGENCY POWER NOTE: EMERGENCY POWER LOCATIONS ARE NOT DISTINGUISHED FROM STANDARD POWER ON ARCHITECTURAL DRAWINGS AT THIS TIME. REFER TO ELECTRICAL DRAWINGS.




CONSULTING ENGINEERS

LBYPD, Inc.
Civil and Structural Engineers
716 South 30th Street
Birmingham, AL 35233
Main (205) 251-4500
Fax (205) 324-4181


3504 7th Avenue South
Birmingham, AL 35222
T 205-353-2373
Project # 012-01051.00



CMH Architects, Inc.
1800 International Park Drive, Suite 300
Birmingham, AL 35243
(205)969-2696 • TEL
(205)969-3930 • FAX
www.cmharch.com

 **WALKER AND MOORE**
INTERIOR DESIGN
PROJECT MANAGEMENT

1100 Laurel Lane
Kempner, Arkansas 71606
Telephone: 501.280.4399
Facsimile: 501.244.5555



Drawing Title
INTERIOR ELEVATIONS

Approved Project Director
James Zeilander

Project Title	A/E AMBULATORY SURGERY IMPROVEMENTS		
Location	VAMC - Birmingham, Alabama		
Date	Checked	Drawn	
11/26/2014			

Project Number 521-328	Office of Construction and Facilities Management
Building Number 0000000000	
Drawing Number A913	Department of

0' 4' 8' 1'

SCALE: 3/8" = 1'-0"

0' 4' 8' 1'

SCALE: 3/8" = 1'-0"

0' 4' 8'

SCALE: 3/8" = 1'-0"

0' 4' 8' 1'

SCALE: 3/8" = 1'-0"

SCALE: 3/8" = 1'-0"



0' 4' 8' 16'

SCALE: 3/8" = 1'-0"

A vertical color calibration bar with segments labeled 1 through 10. The segments are: 1 (black), 2 (dark gray), 3 (medium gray), 4 (light gray), 5 (white), 6 (yellow), 7 (cyan), 8 (magenta), 9 (red), and 10 (blue).

11 WAITING
SCALE: 3/8" = 1'-0"

AFS @ LUBB

CONSTRUCTION DOCUMENTS - 100% FINALS FULLY SPRINKLERED

Project Title

Building Number

ing Number

Department of