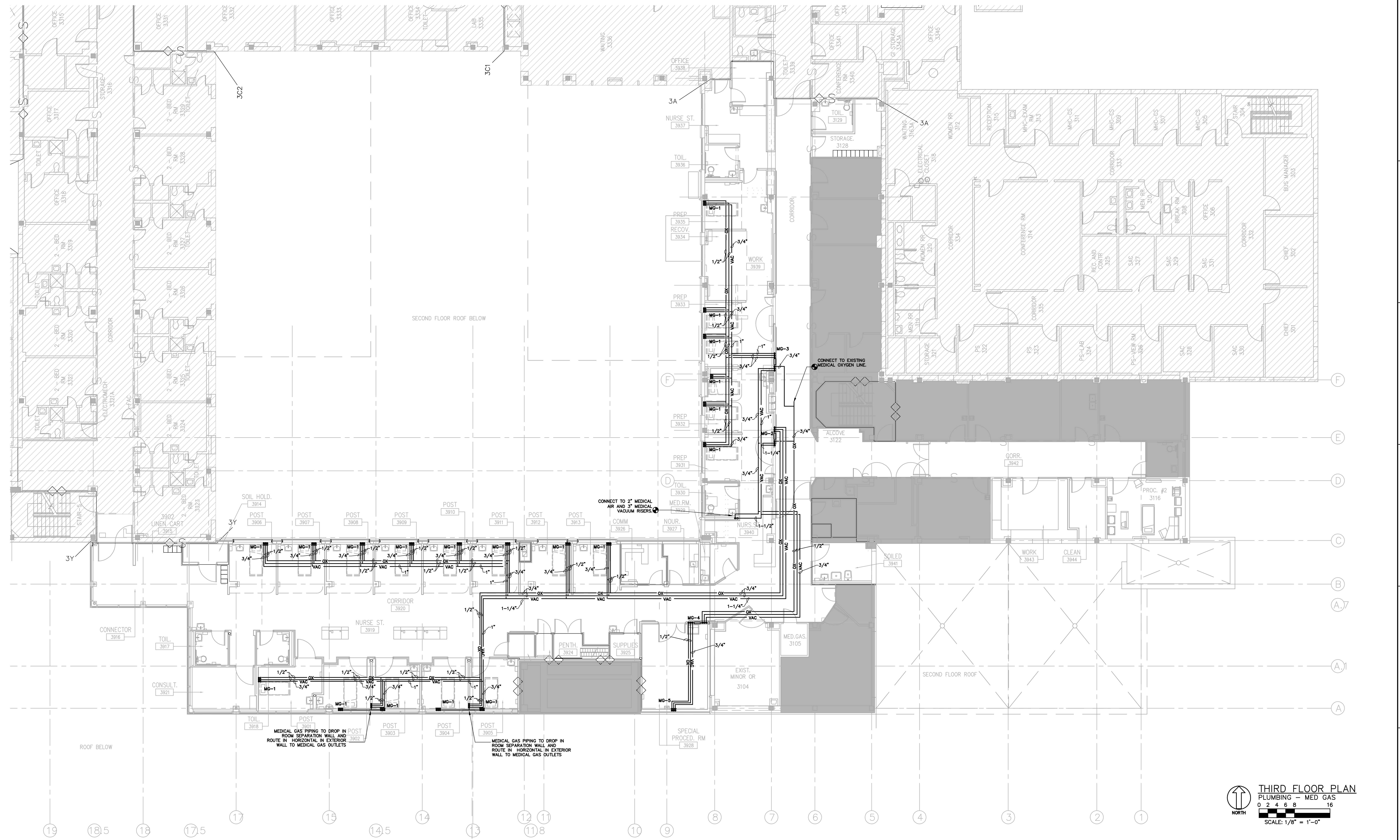


one eighth inch = one foot
one quarter inch = one foot
three eighths inch = one foot
one half inch = one foot
three quarters inch = one foot
one inch = one foot
one and one half inches = one foot
two inches = one foot
three inches = one foot
four inches = one foot
five inches = one foot
six inches = one foot
seven inches = one foot
eight inches = one foot
nine inches = one foot
ten inches = one foot
eleven inches = one foot
twelve inches = one foot
thirteen inches = one foot
fourteen inches = one foot
fifteen inches = one foot
sixteen inches = one foot
seventeen inches = one foot
eighteen inches = one foot
nineteen inches = one foot
twenty inches = one foot
twenty one inches = one foot
twenty two inches = one foot
twenty three inches = one foot
twenty four inches = one foot
twenty five inches = one foot
twenty six inches = one foot
twenty seven inches = one foot
twenty eight inches = one foot
twenty nine inches = one foot
thirty inches = one foot
thirty one inches = one foot
thirty two inches = one foot
thirty three inches = one foot
thirty four inches = one foot
thirty five inches = one foot
thirty six inches = one foot
thirty seven inches = one foot
thirty eight inches = one foot
thirty nine inches = one foot
forty inches = one foot
forty one inches = one foot
forty two inches = one foot
forty three inches = one foot
forty four inches = one foot
forty five inches = one foot
forty six inches = one foot
forty seven inches = one foot
forty eight inches = one foot
forty nine inches = one foot
fifty inches = one foot
fifty one inches = one foot
fifty two inches = one foot
fifty three inches = one foot
fifty four inches = one foot
fifty five inches = one foot
fifty six inches = one foot
fifty seven inches = one foot
fifty eight inches = one foot
fifty nine inches = one foot
sixty inches = one foot
sixty one inches = one foot
sixty two inches = one foot
sixty three inches = one foot
sixty four inches = one foot
sixty five inches = one foot
sixty six inches = one foot
sixty seven inches = one foot
sixty eight inches = one foot
sixty nine inches = one foot
seventy inches = one foot
seventy one inches = one foot
seventy two inches = one foot
seventy three inches = one foot
seventy four inches = one foot
seventy five inches = one foot
seventy six inches = one foot
seventy seven inches = one foot
seventy eight inches = one foot
seventy nine inches = one foot
eighty inches = one foot
eighty one inches = one foot
eighty two inches = one foot
eighty three inches = one foot
eighty four inches = one foot
eighty five inches = one foot
eighty six inches = one foot
eighty seven inches = one foot
eighty eight inches = one foot
eighty nine inches = one foot
ninety inches = one foot
ninety one inches = one foot
ninety two inches = one foot
ninety three inches = one foot
ninety four inches = one foot
ninety five inches = one foot
ninety six inches = one foot
ninety seven inches = one foot
ninety eight inches = one foot
ninety nine inches = one foot
one hundred inches = one foot



THIRD FLOOR PLAN
PLUMBING - MED GAS
SCALE: 1/8" = 1'-0"

CONSTRUCTION DOCUMENTS - 100% FINALS FULLY SPRINKLERED

CONSULTING ENGINEERS: LBVD, Inc. Civil and Structural Engineers 716 South 30th Street Birmingham, AL 35223 Main (205) 251-4500 Fax (205) 324-4181 © copyright 2012		SSOE, Inc. 3504 7th Avenue South Birmingham, AL 35222 1-205-333-5573 Project # 012-01051.00		 5-20-2014		ARCHITECT: CMH Architects, Inc. 1800 International Park Drive, Suite 300 Birmingham, AL 35243 (205) 969-2696 - TEL (205) 969-3930 - FAX www.cmharch.com Copyright © 2011 CMH Architects, Inc.		PROJECT MANAGEMENT: WALKER AND MOORE 1100 Laurel Lane Montgomery, Alabama 36106 Telephone: 334.380.4599 Facsimile: 334.264.5585		Drawing Title THIRD FLOOR PLAN - MEDICAL GAS Approved Project Director James Zellander		Project Title A/E AMBULATORY SURGERY IMPROVEMENTS Location VAMC - Birmingham, Alabama Date 5/23/2014 Checked DSH Drawn CNM		Project Number 521-328 Bidding Number 0000000000 Drawing Number P303 Dwg. 78 of 124 Office of Construction and Facilities Management 	
----------------------------------------------------------------------------------------------------------------------------------------------------------------------------------------------------	--	----------------------------------------------------------------------------------------------------------------	--	---------------	--	-------------------------------------------------------------------------------------------------------------------------------------------------------------------------------------------------------------------------------	--	--------------------------------------------------------------------------------------------------------------------------------------------------	--	----------------------------------------------------------------------------------------------------------------------	--	------------------------------------------------------------------------------------------------------------------------------------------------------------------------------------------	--	--------------------------------------------------------------------------------------------------------------------------------------------------------------------------------------------------	--