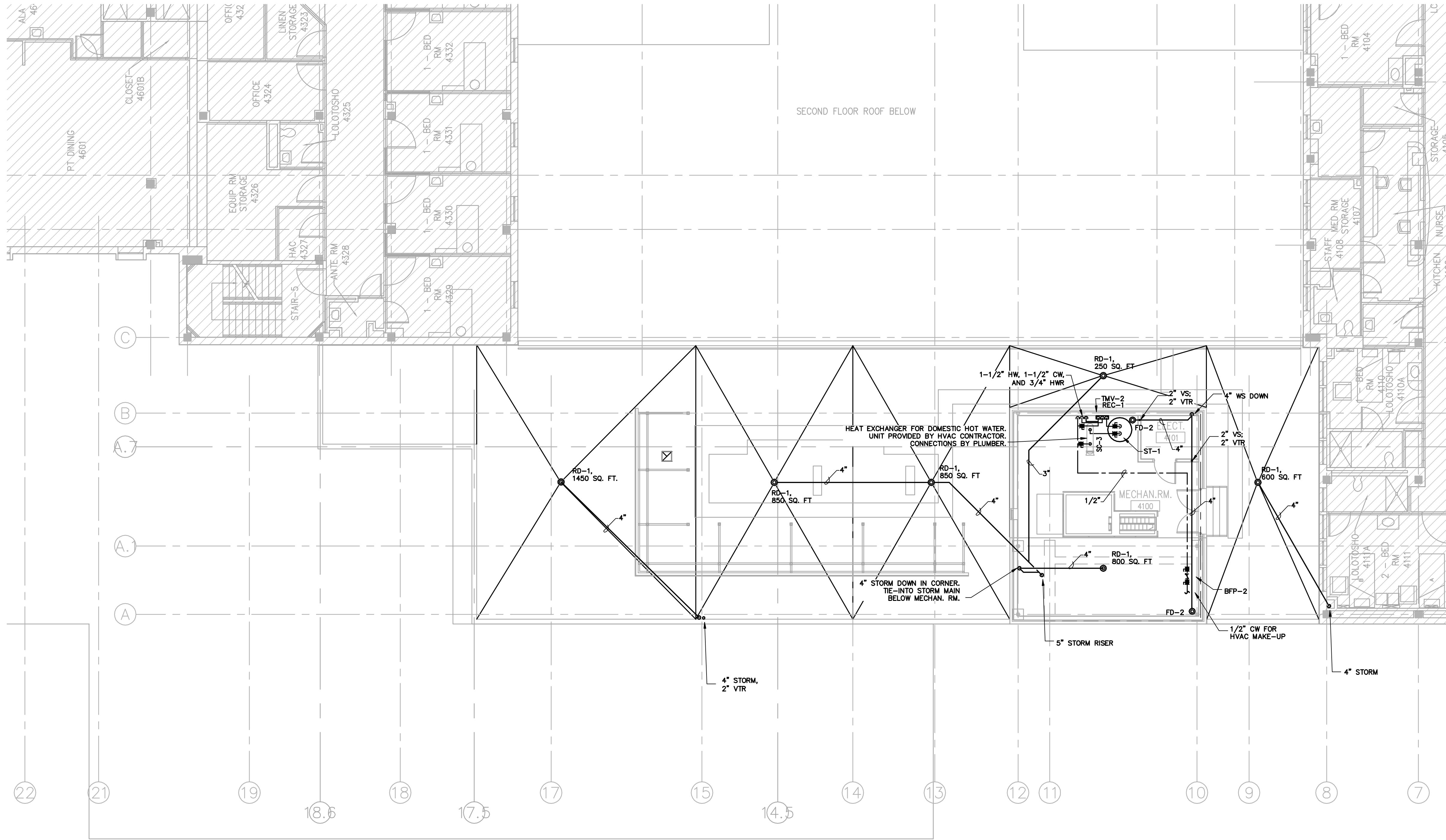







one eighth inch = one foot
one quarter inch = one foot
one half inch = one foot
three eighths inch = one foot
one inch = one foot
one and one half inches = one foot
two inches = one foot
three inches = one foot

PLOT DATE: 5/20/2014 10:01 AM
T:\10\10129 Drawings-BHM\1012905new.dwg



ROOF/PENTHOUSE PLAN
PLUMBING
SCALE: 1/8" = 1'-0"

CONSTRUCTION DOCUMENTS - 100% FINALS FULLY SPRINKLERED

		CONSULTING ENGINEERS:		ARCHITECT:		PROJECT MANAGEMENT:		Drawing Title		Project Title		Project Number		Office of Construction and Facilities Management Department of Veterans Affairs			
		<div><div><div>LBVD, Inc. Civil and Structural Engineers 716 South 30th Street Birmingham, AL 35233 Main (205) 251-4500 Fax (205) 324-4181</div></div><div><div><div>SSOE, Inc. 3504 7th Avenue South Birmingham, AL 35222 1 205-333-2373 Project # 012-01051.00</div></div></div></div>		<div><div>5-20-2014</div></div>		<div><div>CMH Architects, Inc. 1800 International Park Drive, Suite 300 Birmingham, AL 35243 (205) 969-2696 – TEL (205) 969-3930 – FAX www.cmharch.com Copyright © 2011 CMH Architects, Inc.</div></div>		<div><div>WALKER AND MOORE INTERIOR DESIGN PROJECT MANAGEMENT 1100 Laurel Lane Montgomery, Alabama 36106 Telephone: 334.380.4599 Facsimile: 334.264.5585</div></div>		ROOF PLAN - PLUMBING		A/E AMBULATORY SURGERY IMPROVEMENTS				521-328	
								Approved Project Director James Zellander		Location VAMC - Birmingham, Alabama		Drawing Number P402					
										Date 5/23/2014		Checked DSH				Drawn CNM	
Revisions		Date										Dwg. 80 of 124					