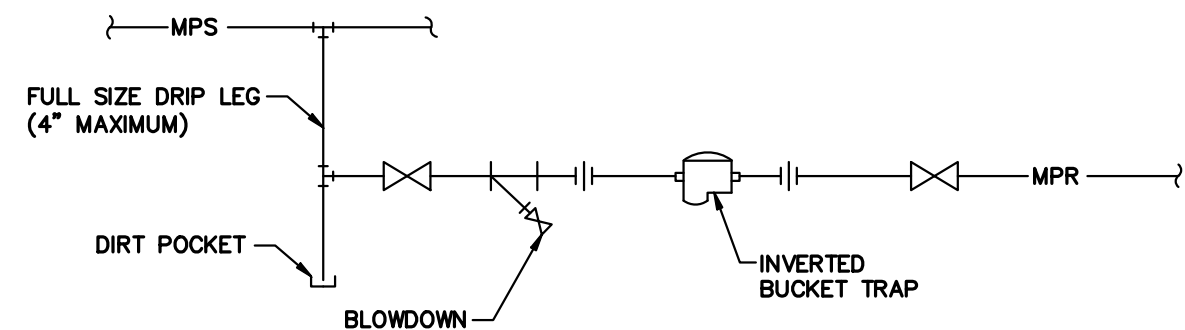
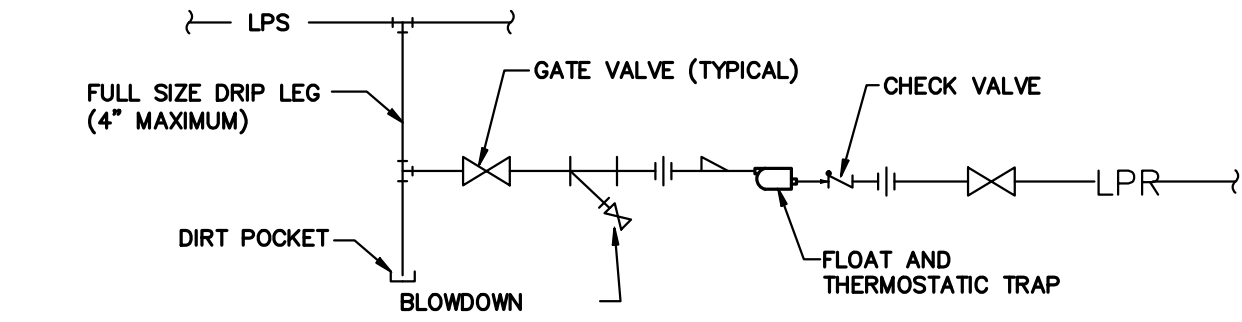


three inches = one foot  
one and one half inches = one foot  
one inch = one foot  
three quarters inch = one foot  
one half inch = one foot  
one quarter inch = one foot  
one eighth inch = one foot

T:\10\10129\Drawings-BHM\10129001.dwg  
PLOT DATE: 5/20/2014 9:45 AM

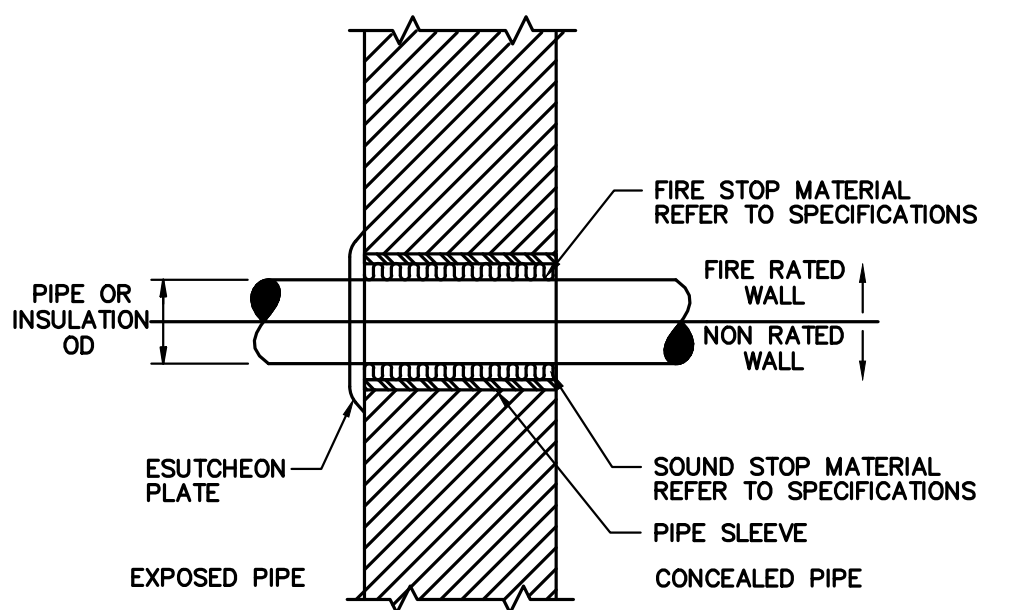


MEDIUM PRESSURE DRIP SCHEMATIC  
NO SCALE

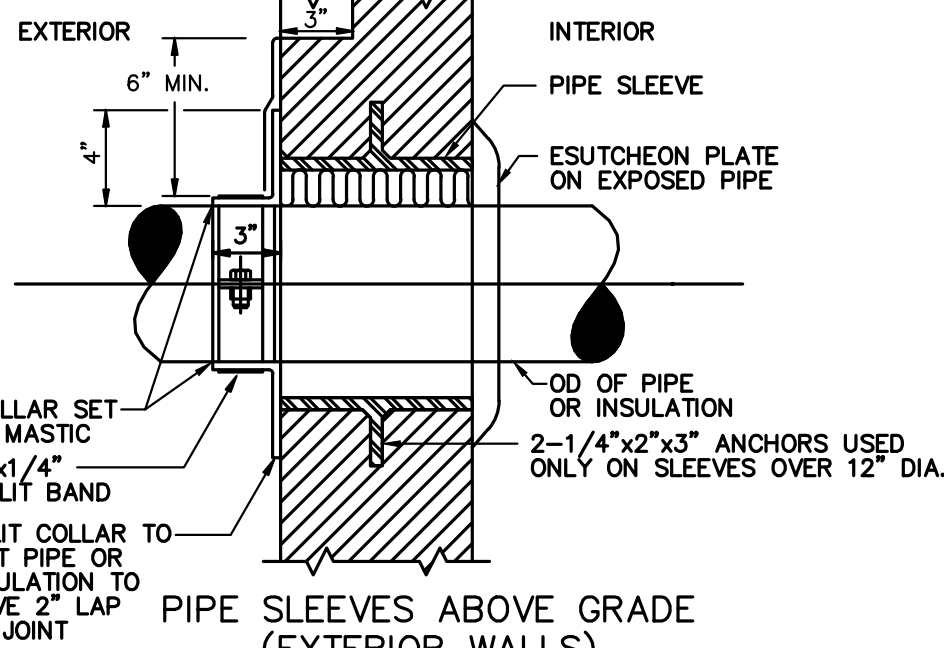


LOW PRESSURE DRIP SCHEMATIC  
NO SCALE

PIPE OR INSULATION OD	MINIMUM SLEEVE SIZE (NPS)
UP TO 1"	3"
1" THRU 2"	5"
2" THRU 3"	6"
3" THRU 5 1/2"	8"
6" THRU 8"	10"
8 5/8" THRU 10"	12"
10 3/4" THRU 11"	14"
12 3/4" THRU 13"	16"
14" THRU 16"	20"
16" THRU 20"	24"

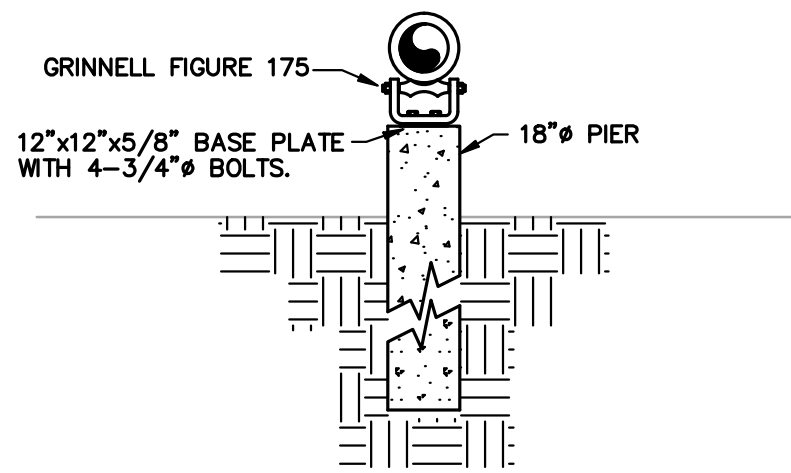


PIPE SLEEVES ABOVE GRADE  
(INTERIOR WALLS)

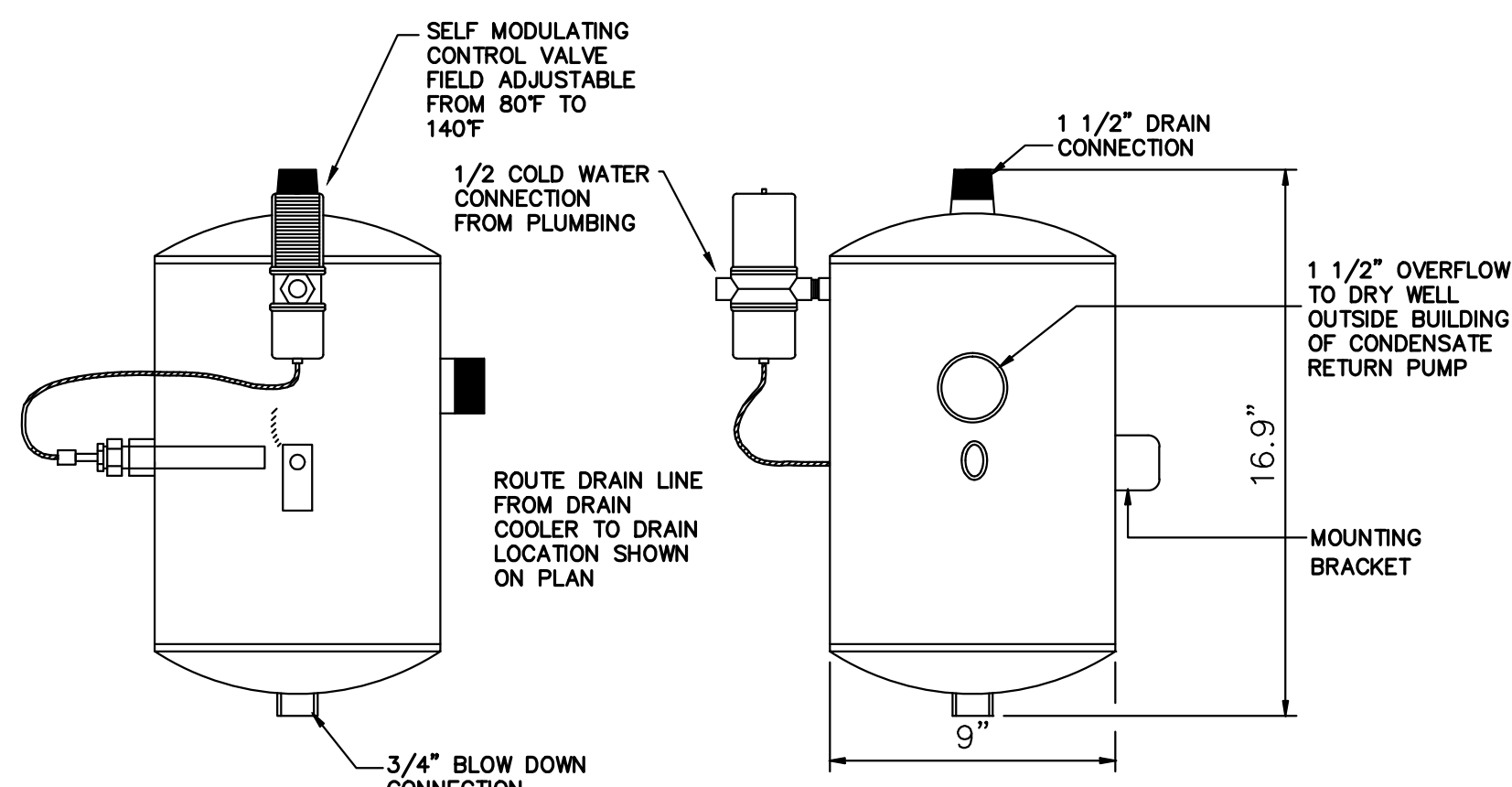


PIPE SLEEVES ABOVE GRADE  
(EXTERIOR WALLS)

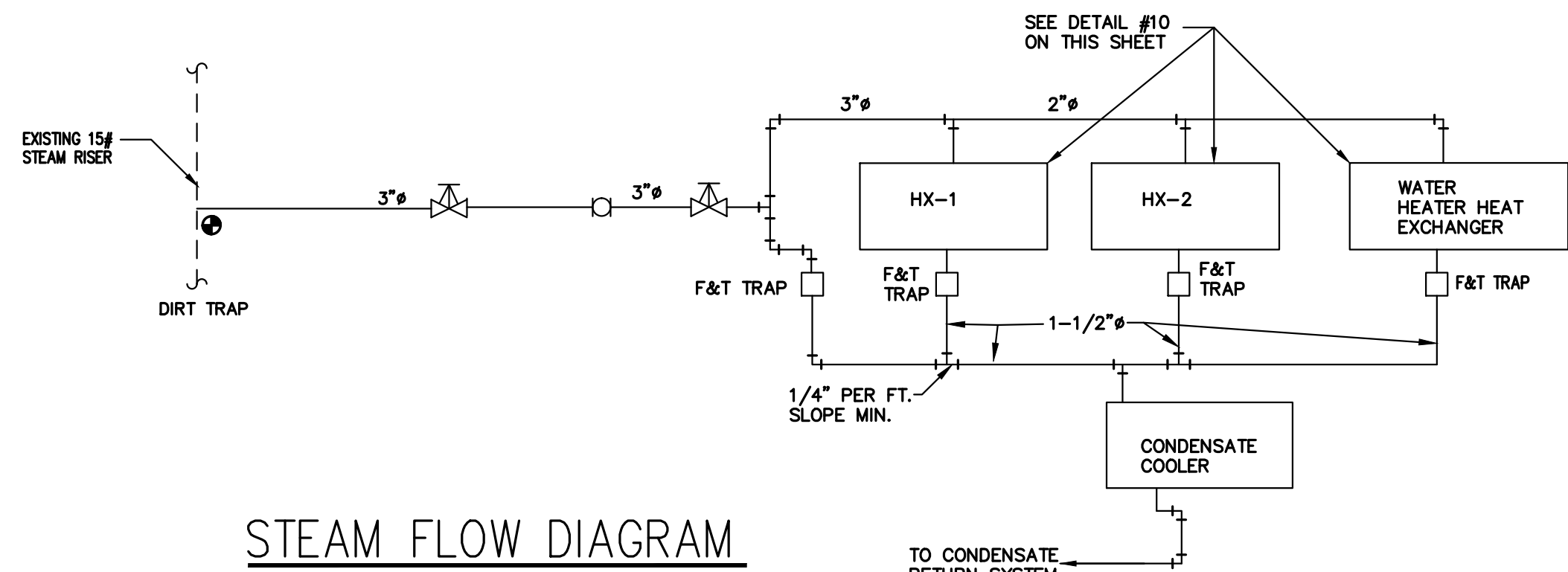
NO SCALE



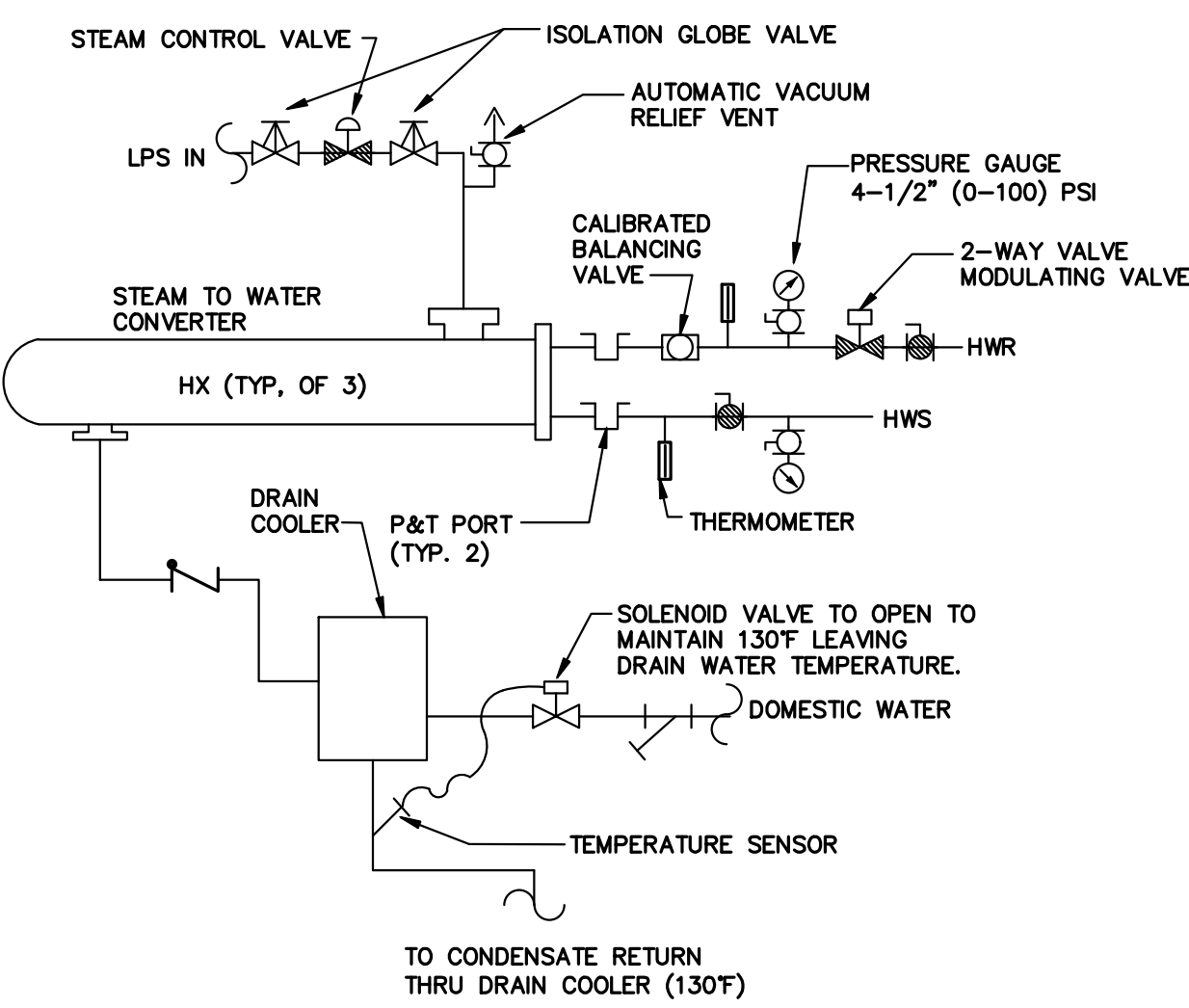
PIPE SUPPORT DETAIL  
NO SCALE



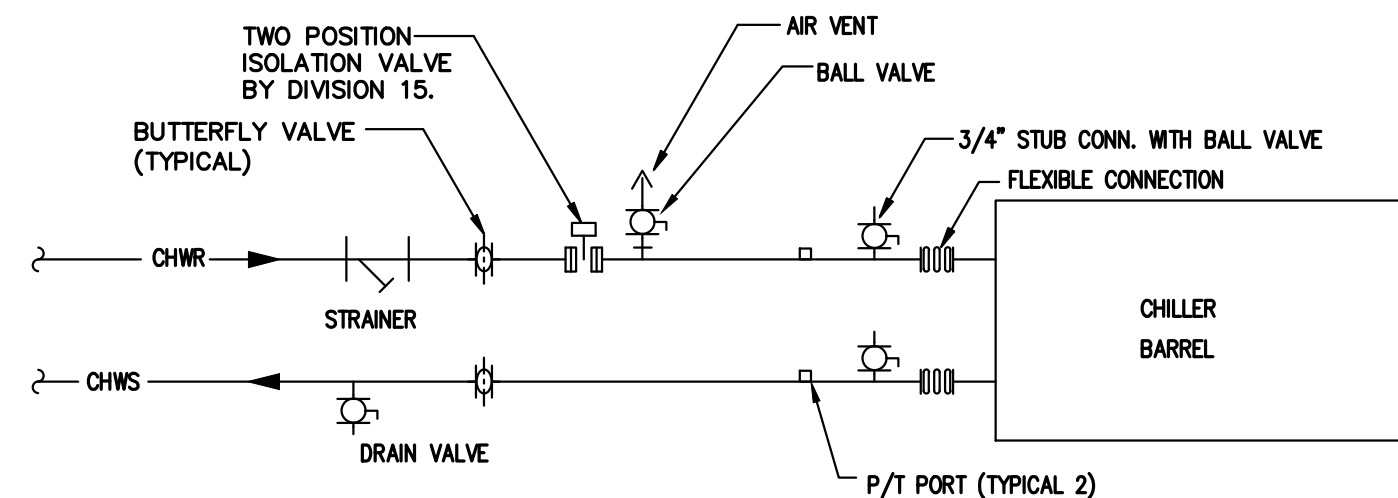
DRAIN COOLER DETAIL  
NO SCALE



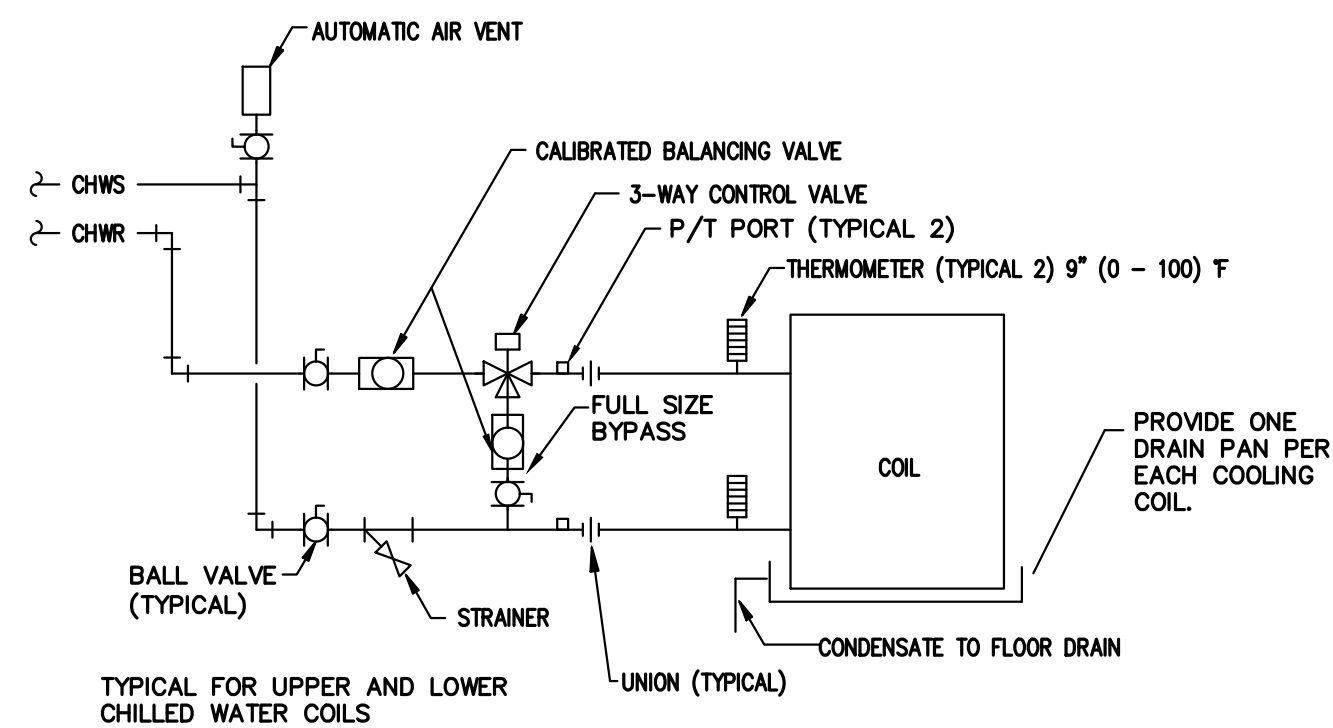
STEAM FLOW DIAGRAM  
NO SCALE



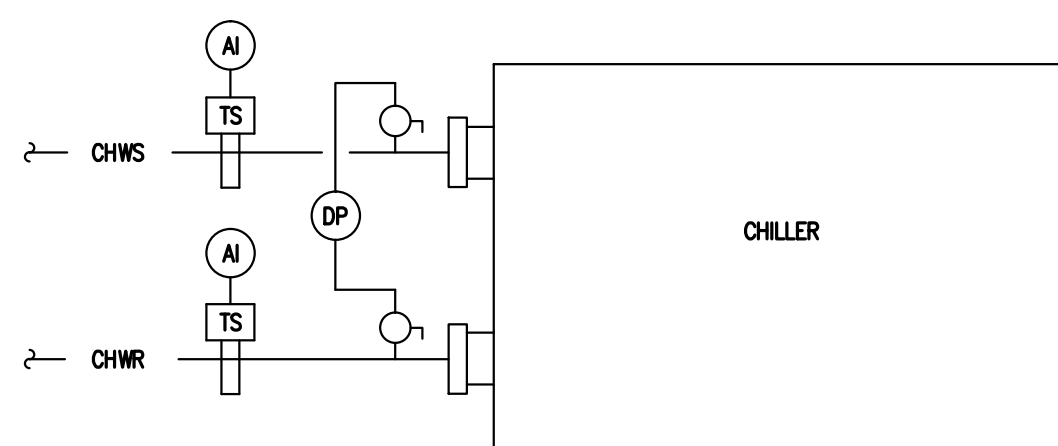
HX AND CONDENSATE COOLER DETAIL  
NO SCALE



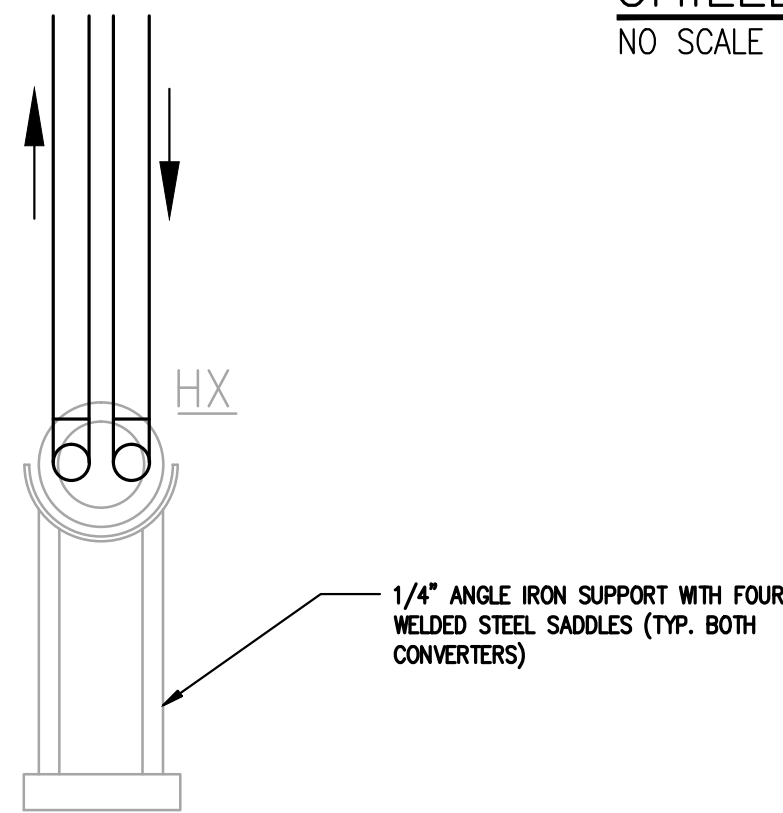
CHILLER PIPING SCHEMATIC  
CHILLED WATER - NO SCALE



AHU CHILLED WATER COIL  
NO SCALE



CHILLER CONTROL DIAGRAM  
NO SCALE



HEAT EXCHANGER SUPPORT DETAIL  
NO SCALE

COMPLETION ITEM NO. \_\_\_\_\_  
CONSTRUCTION DOCUMENTS - 100% FINALS FULLY SPRINKLERED

MECH REVIEW RESPONSE	2014/02/24
Revisions	Date

CONSULTING ENGINEERS:



SSOE, Inc.  
3504 7th Avenue South  
Birmingham, AL 35222  
T 205-925-2375  
Project # 012-01051.00



5-20-2014

ARCHITECT:



CMH Architects, Inc.  
1800 International Park Drive, Suite 300  
Birmingham, AL 35243  
(205) 969-2696 - TEL  
(205) 969-3950 - FAX  
www.cmharch.com  
Copyright © 2011 CMH Architects, Inc.

PROJECT MANAGEMENT:



Drawing Title

HVAC CONTROLS

Approved Project Director  
James Zellander

Project Title  
A/E AMBULATORY SURGERY  
IMPROVEMENTS

Location  
VAMC - Birmingham, Alabama

Date  
5/23/2014

Checked  
DSH

Drawn  
JAG

Project Number  
521-328

Building Number  
0000000000

Drawing Number  
M005  
Dwg. 85 of 124

Office of  
Construction  
and Facilities  
Management

