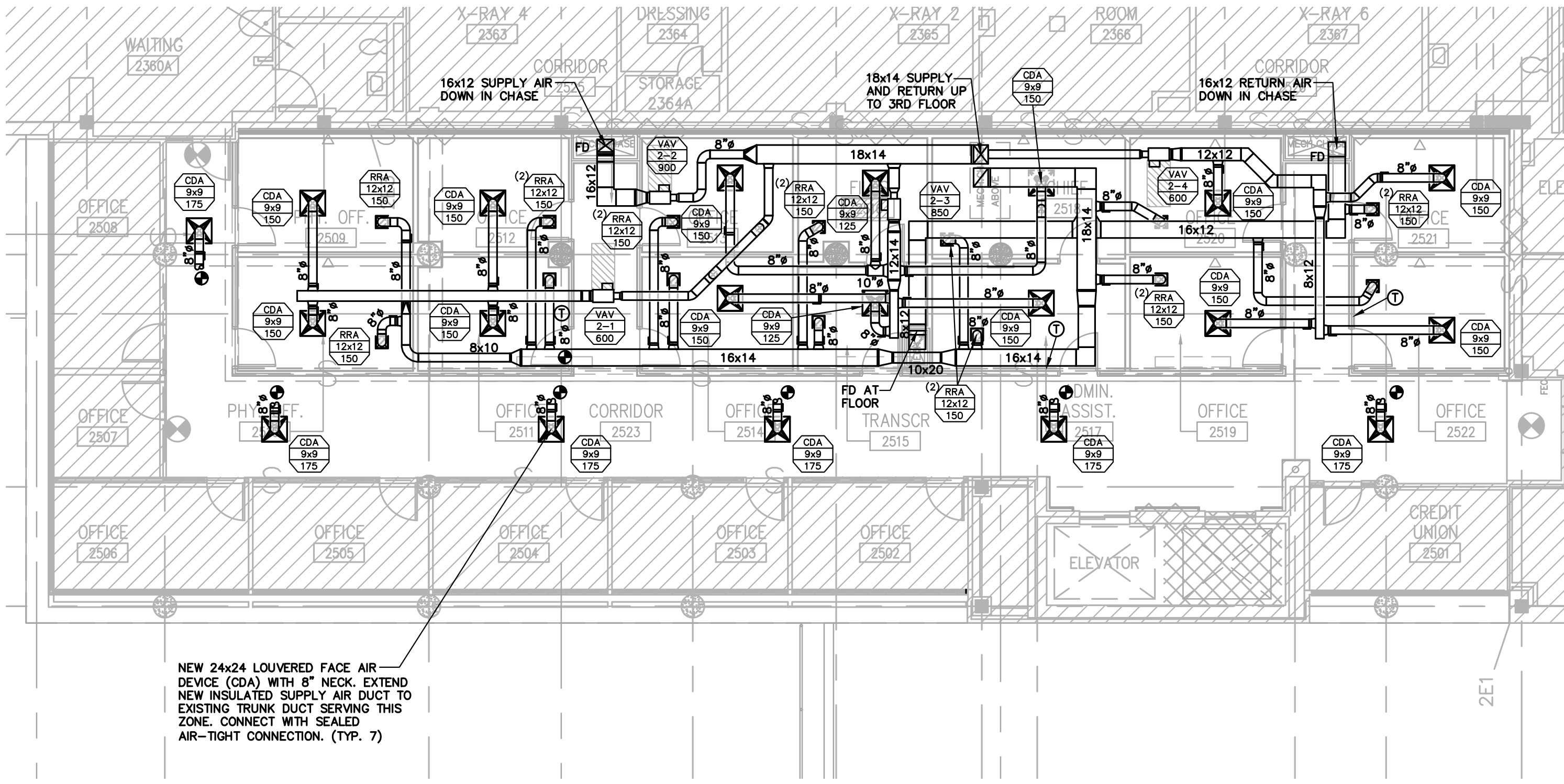
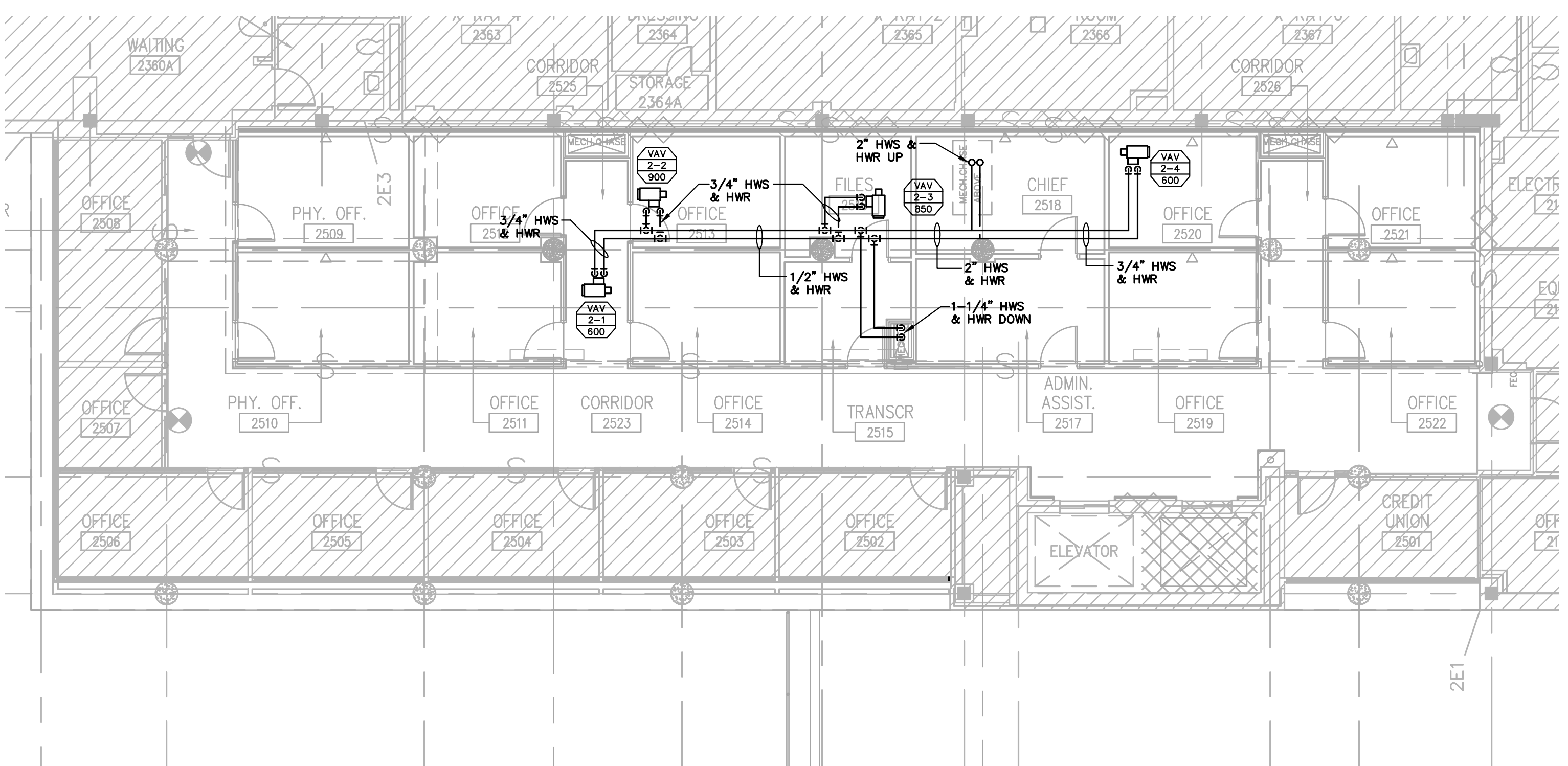


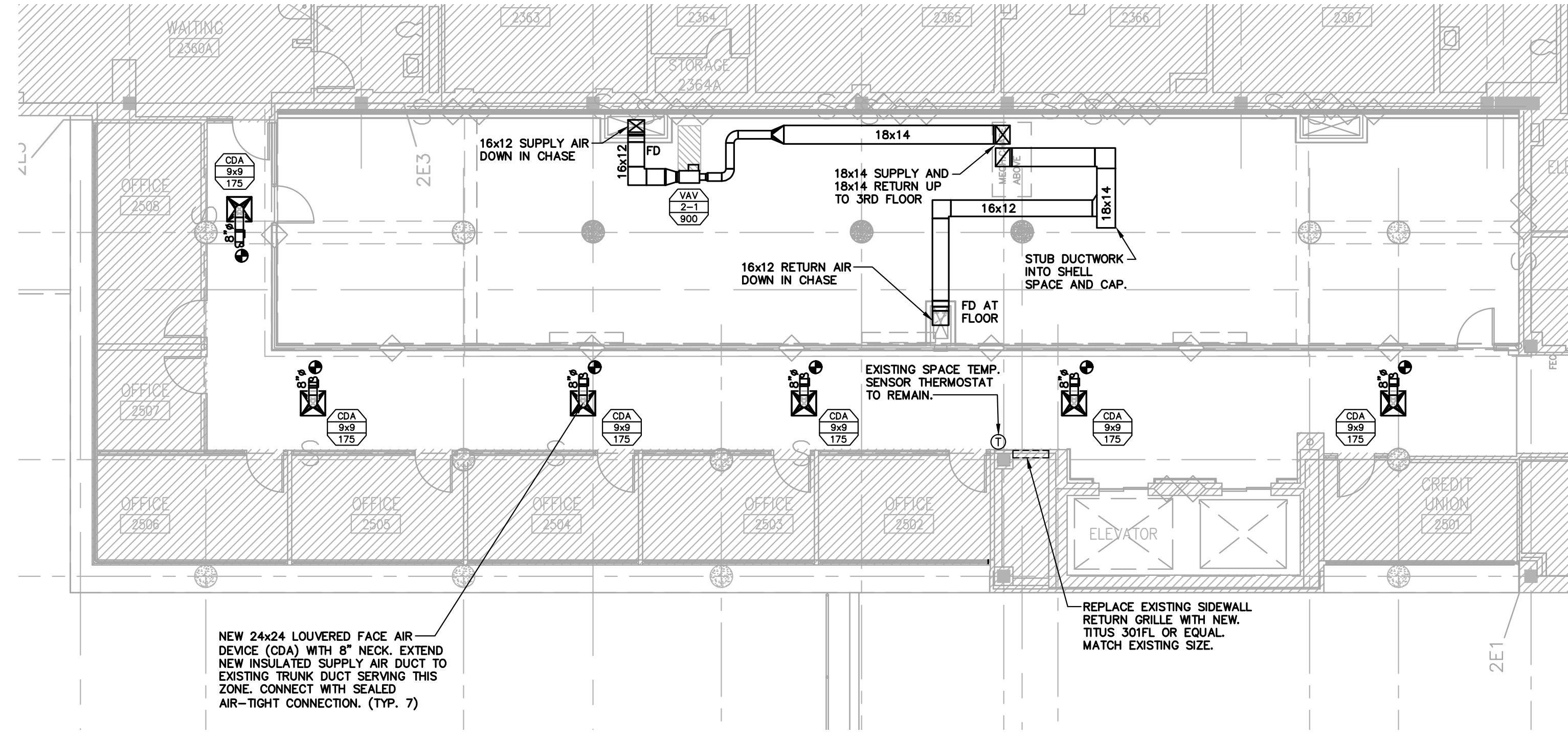
one eighth inch = one foot  
one quarter inch = one foot  
three eighths inch = one foot  
one half inch = one foot  
three quarters inch = one foot  
one inch = one foot  
one and one half inches = one foot  
two inches = one foot  
three inches = one foot  
four inches = one foot  
five inches = one foot  
six inches = one foot  
seven inches = one foot  
eight inches = one foot  
nine inches = one foot  
ten inches = one foot  
eleven inches = one foot  
twelve inches = one foot  
thirteen inches = one foot  
fourteen inches = one foot  
fifteen inches = one foot  
sixteen inches = one foot  
seventeen inches = one foot  
eighteen inches = one foot  
nineteen inches = one foot  
twenty inches = one foot  
twenty one inches = one foot  
twenty two inches = one foot  
twenty three inches = one foot  
twenty four inches = one foot  
twenty five inches = one foot  
twenty six inches = one foot  
twenty seven inches = one foot  
twenty eight inches = one foot  
twenty nine inches = one foot  
thirty inches = one foot  
thirty one inches = one foot  
thirty two inches = one foot  
thirty three inches = one foot  
thirty four inches = one foot  
thirty five inches = one foot  
thirty six inches = one foot  
thirty seven inches = one foot  
thirty eight inches = one foot  
thirty nine inches = one foot  
forty inches = one foot  
forty one inches = one foot  
forty two inches = one foot  
forty three inches = one foot  
forty four inches = one foot  
forty five inches = one foot  
forty six inches = one foot  
forty seven inches = one foot  
forty eight inches = one foot  
forty nine inches = one foot  
fifty inches = one foot  
fifty one inches = one foot  
fifty two inches = one foot  
fifty three inches = one foot  
fifty four inches = one foot  
fifty five inches = one foot  
fifty six inches = one foot  
fifty seven inches = one foot  
fifty eight inches = one foot  
fifty nine inches = one foot  
sixty inches = one foot  
sixty one inches = one foot  
sixty two inches = one foot  
sixty three inches = one foot  
sixty four inches = one foot  
sixty five inches = one foot  
sixty six inches = one foot  
sixty seven inches = one foot  
sixty eight inches = one foot  
sixty nine inches = one foot  
seventy inches = one foot  
seventy one inches = one foot  
seventy two inches = one foot  
seventy three inches = one foot  
seventy four inches = one foot  
seventy five inches = one foot  
seventy six inches = one foot  
seventy seven inches = one foot  
seventy eight inches = one foot  
seventy nine inches = one foot  
eighty inches = one foot  
eighty one inches = one foot  
eighty two inches = one foot  
eighty three inches = one foot  
eighty four inches = one foot  
eighty five inches = one foot  
eighty six inches = one foot  
eighty seven inches = one foot  
eighty eight inches = one foot  
eighty nine inches = one foot  
ninety inches = one foot  
ninety one inches = one foot  
ninety two inches = one foot  
ninety three inches = one foot  
ninety four inches = one foot  
ninety five inches = one foot  
ninety six inches = one foot  
ninety seven inches = one foot  
ninety eight inches = one foot  
ninety nine inches = one foot  
one hundred inches = one foot



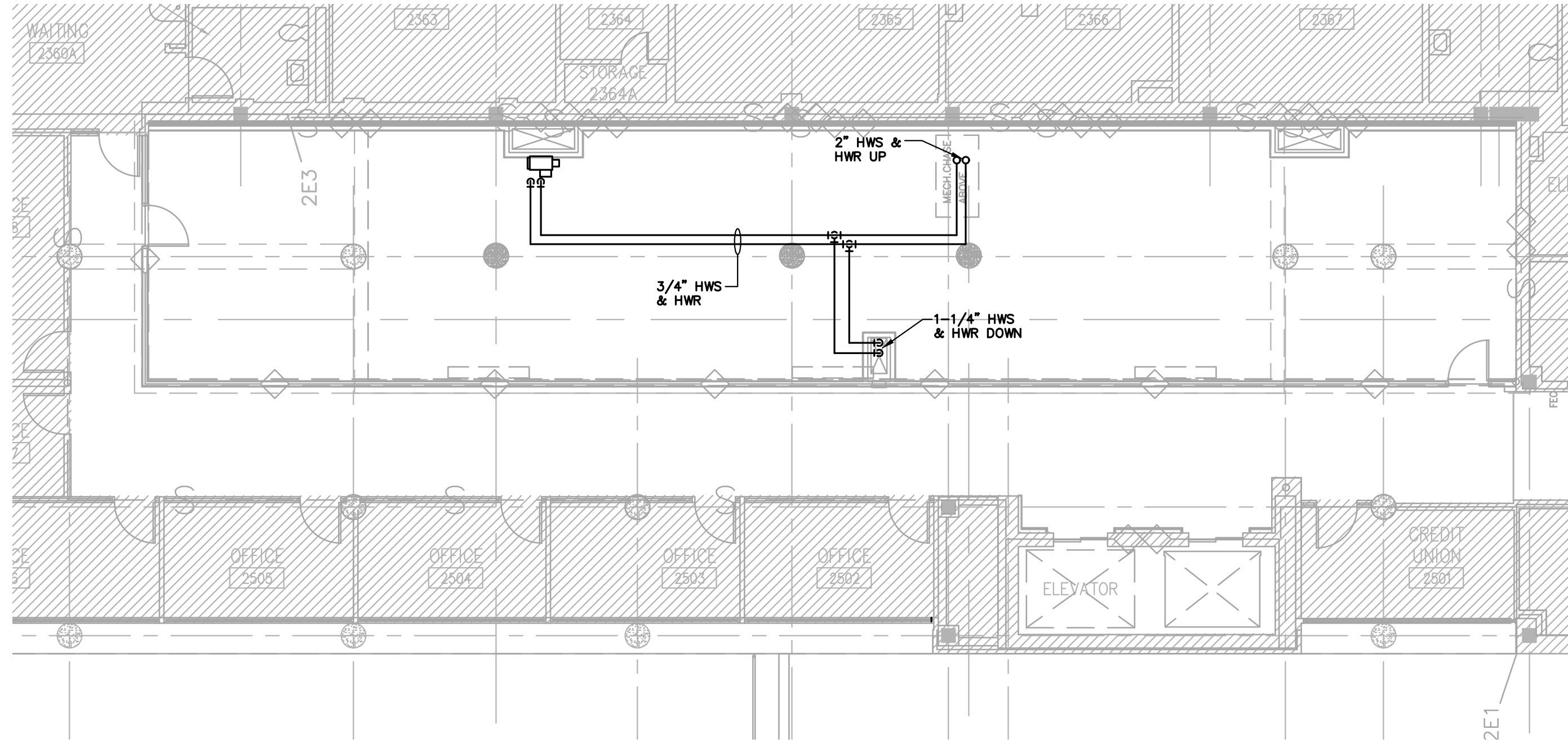
SECOND FLOOR PLAN - NEW BASE BID  
HVAC DUCTWORK  
0 2 4 6 8 16  
SCALE: 1/8" = 1'-0"



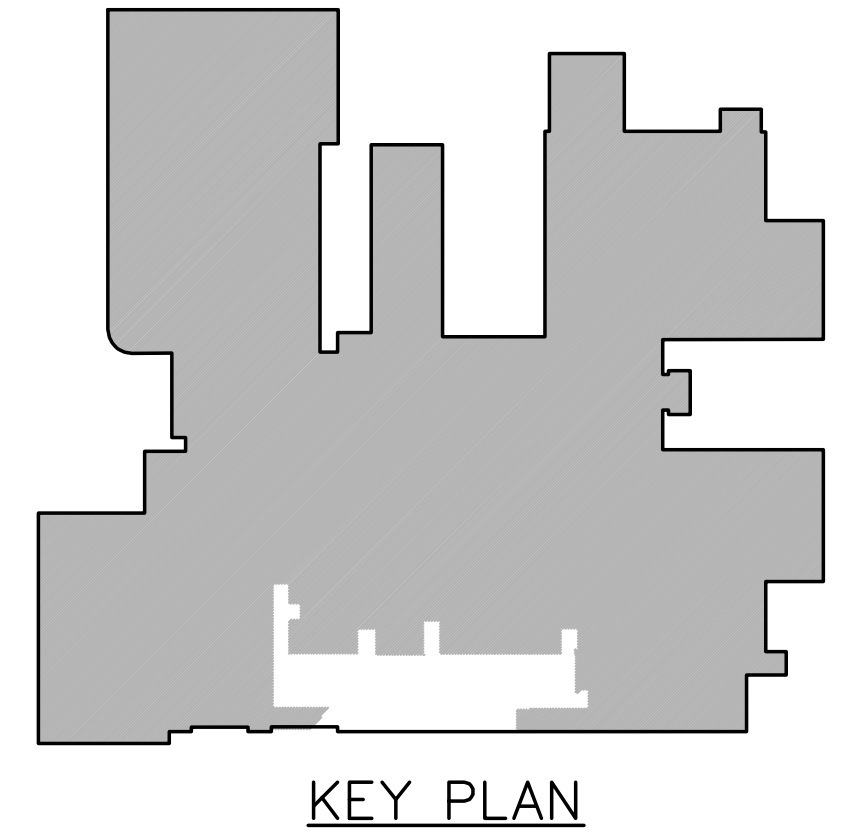
SECOND FLOOR PLAN - NEW BASE BID  
HVAC PIPING  
0 2 4 6 8 16  
SCALE: 1/8" = 1'-0"



SECOND FLOOR PLAN - NEW DEDUCTIVE ALTERNATE #2  
HVAC DUCTWORK  
0 2 4 6 8 16  
SCALE: 1/8" = 1'-0"


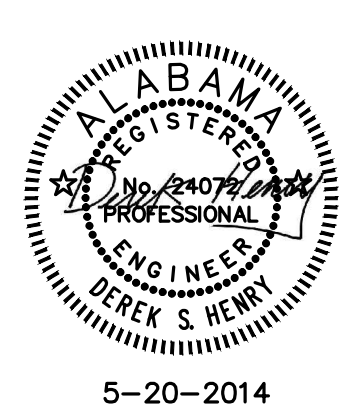





SECOND FLOOR PLAN - NEW DEDUCTIVE ALTERNATE #2  
HVAC - PIPING  
0 2 4 6 8 16  
SCALE: 1/8" = 1'-0"



KEY PLAN

COMPLETION ITEM NO. \_\_\_\_\_  
CONSTRUCTION DOCUMENTS - 100% FINALS FULLY SPRINKLERED

<b>CONSULTING ENGINEERS:</b>  <b>LBYO, Inc.</b> Civil and Structural Engineers 716 South 30th Street Birmingham, AL 35233 Main (205) 251-4500 Fax (205) 324-4181		<b>SSOE, Inc.</b> 3504 7th Avenue South Birmingham, AL 35222 P 205-325-2373 Project # 012-01051.00		 5-20-2014		<b>ARCHITECT:</b>  <b>CMH Architects, Inc.</b> 1800 International Park Drive, Suite 300 Birmingham, AL 35243 (205) 969-2696 - TEL (205) 969-3950 - FAX www.cmharch.com Copyright © 2011 CMH Architects, Inc.		<b>PROJECT MANAGEMENT:</b>  <b>WALKER AND MOORE</b> 1100 Laurel Lane Montgomery, Alabama 36106 Telephone: 334.380.4399 Fax: 334.264.5585		<b>Drawing Title</b> <b>SECOND FLOOR PLAN HVAC - NEW</b> <b>Approved Project Director</b> James Zellander		<b>Project Title</b> <b>A/E AMBULATORY SURGERY IMPROVEMENTS</b>		<b>Project Number</b> 521-328 <b>Building Number</b> 0000000000		<b>Office of Construction and Facilities Management</b> 	
<b>MECH REVIEW RESPONSE</b> 2014/05/05 <b>MECH REVIEW RESPONSE</b> 2014/02/24 <b>Revisions</b> Date												<b>Location</b> VAMC - Birmingham, Alabama <b>Date</b> 5/23/2014 <b>Checked</b> DSH <b>Drawn</b> JAG		<b>Drawing Number</b> <b>M202</b> Dwg. 88 of 124			