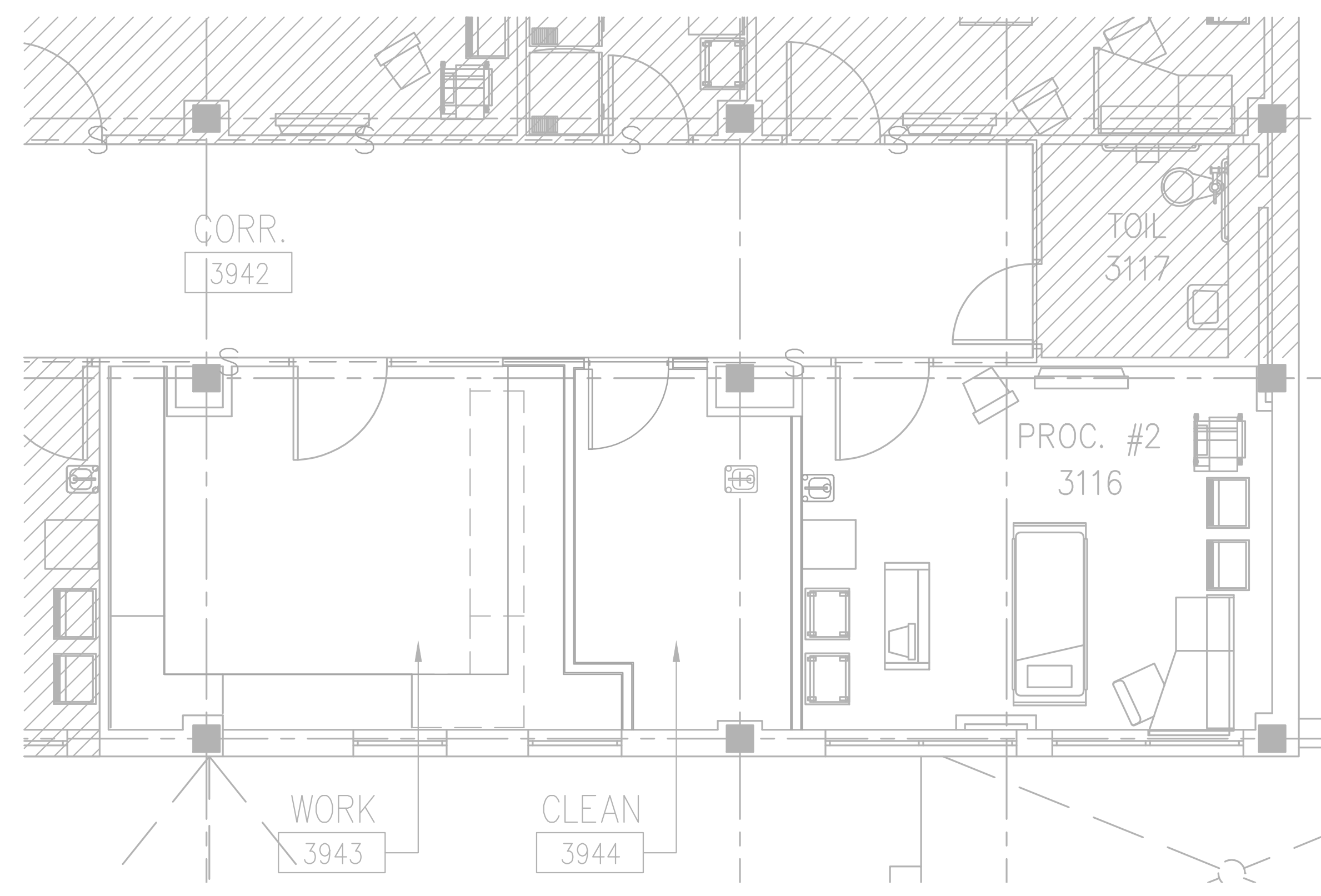
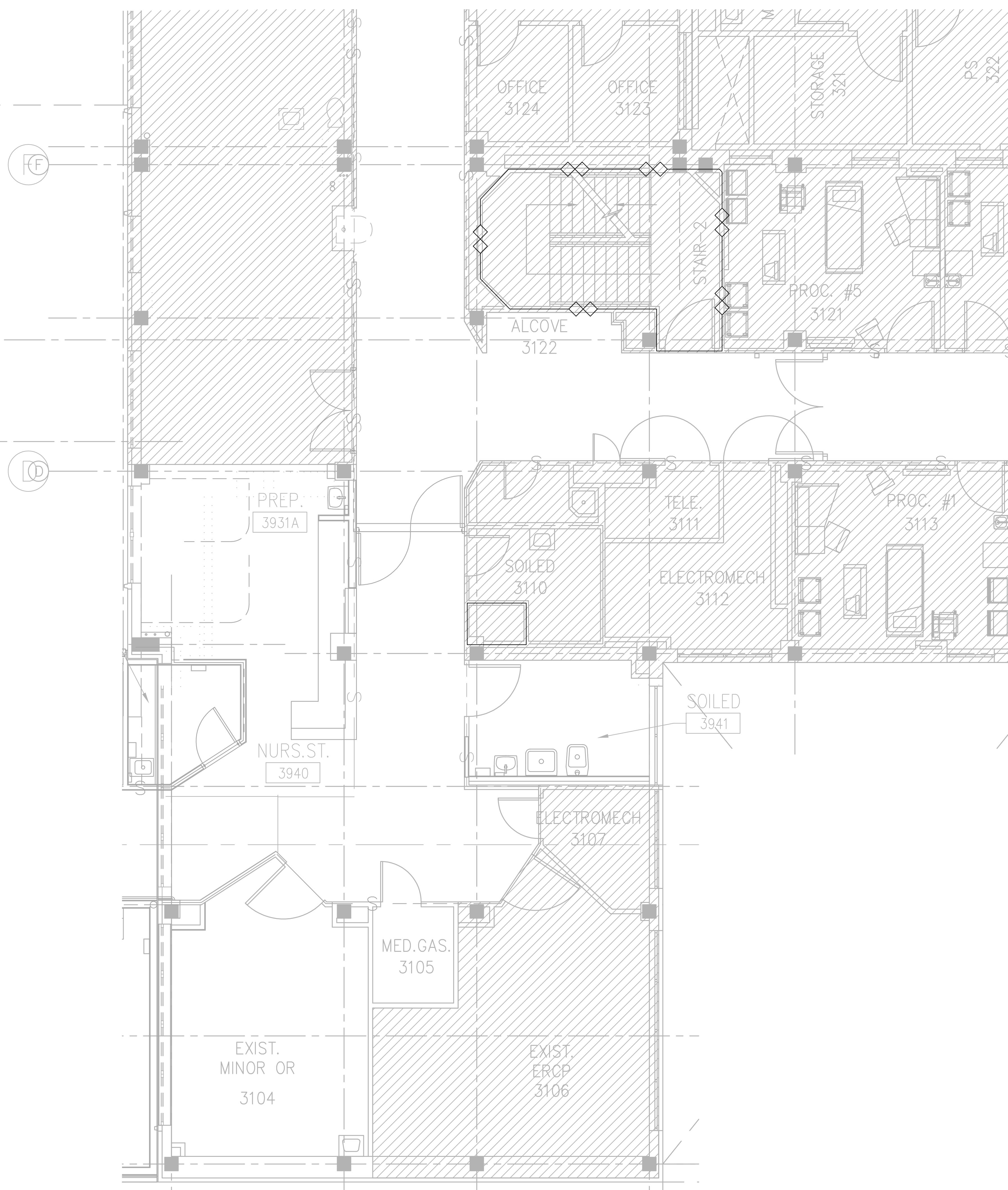


one eighth inch = one foot
one quarter inch = one foot
three eighths inch = one foot
one half inch = one foot
three quarters inch = one foot
one inch = one foot
one and one half inches = one foot
two inches = one foot
three inches = one foot
four inches = one foot
five inches = one foot
six inches = one foot
seven inches = one foot
eight inches = one foot
nine inches = one foot
ten inches = one foot
eleven inches = one foot
twelve inches = one foot
thirteen inches = one foot
fourteen inches = one foot
fifteen inches = one foot
sixteen inches = one foot
seventeen inches = one foot
eighteen inches = one foot
nineteen inches = one foot
twenty inches = one foot
twenty one inches = one foot
twenty two inches = one foot
twenty three inches = one foot
twenty four inches = one foot
twenty five inches = one foot
twenty six inches = one foot
twenty seven inches = one foot
twenty eight inches = one foot
twenty nine inches = one foot
thirty inches = one foot
thirty one inches = one foot
thirty two inches = one foot
thirty three inches = one foot
thirty four inches = one foot
thirty five inches = one foot
thirty six inches = one foot
thirty seven inches = one foot
thirty eight inches = one foot
thirty nine inches = one foot
forty inches = one foot
forty one inches = one foot
forty two inches = one foot
forty three inches = one foot
forty four inches = one foot
forty five inches = one foot
forty six inches = one foot
forty seven inches = one foot
forty eight inches = one foot
forty nine inches = one foot
fifty inches = one foot
fifty one inches = one foot
fifty two inches = one foot
fifty three inches = one foot
fifty four inches = one foot
fifty five inches = one foot
fifty six inches = one foot
fifty seven inches = one foot
fifty eight inches = one foot
fifty nine inches = one foot
sixty inches = one foot
sixty one inches = one foot
sixty two inches = one foot
sixty three inches = one foot
sixty four inches = one foot
sixty five inches = one foot
sixty six inches = one foot
sixty seven inches = one foot
sixty eight inches = one foot
sixty nine inches = one foot
seventy inches = one foot
seventy one inches = one foot
seventy two inches = one foot
seventy three inches = one foot
seventy four inches = one foot
seventy five inches = one foot
seventy six inches = one foot
seventy seven inches = one foot
seventy eight inches = one foot
seventy nine inches = one foot
eighty inches = one foot
eighty one inches = one foot
eighty two inches = one foot
eighty three inches = one foot
eighty four inches = one foot
eighty five inches = one foot
eighty six inches = one foot
eighty seven inches = one foot
eighty eight inches = one foot
eighty nine inches = one foot
ninety inches = one foot
ninety one inches = one foot
ninety two inches = one foot
ninety three inches = one foot
ninety four inches = one foot
ninety five inches = one foot
ninety six inches = one foot
ninety seven inches = one foot
ninety eight inches = one foot
ninety nine inches = one foot
one hundred inches = one foot



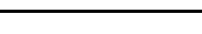
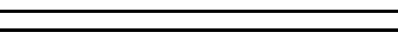


THIRD FLOOR EQUIPMENT PLAN
FIRE PROTECTION
SCALE: 1/8" = 1'-0"



DEDUCTIVE ALTERNATE #3 THIRD FLOOR EQUIPMENT PLAN
FIRE PROTECTION
SCALE: 1/8" = 1'-0"

- FIRESTOP NOTES:**
1. PROVIDE THROUGH-PENETRATION FIRESTOP SYSTEMS FOR PIPING PENETRATIONS THROUGH THE FOLLOWING FIRE-RESISTANCE-RATED ASSEMBLIES:
A. FLOORS
B. ROOFS
C. WALLS AND PARTITIONS
D. SMOKE BARRIERS
E. CONSTRUCTION ENCLOSING COMPARTMENTALIZED AREAS
 2. FIRESTOP SYSTEMS PROVIDED SHALL RESIST SPREAD OF FIRE, RESIST PASSAGE OF SMOKE AND OTHER GASES, PROVIDE U.L. CLASSIFIED THROUGH-PENETRATION FIRESTOP SYSTEM FOR EACH PENETRATION IN ACCORDANCE WITH MANUFACTURER'S GUIDELINES.
- SPRINKLER NOTES:**
1. REWORK EXISTING SPRINKLER SYSTEM PIPING AND PROVIDE NEW SPRINKLERS IN ALL AREAS IN ACCORDANCE WITH THE CITY OF BIRMINGHAM, NFPA 13 AND SPECIFICATION SECTION 2113.13 REQUIREMENTS.
 2. PROVIDE UPRIGHT SPRINKLERS IN UNFINISHED AREAS WITHOUT CEILING AND CHROME RECESSED PENDENT TYPE SPRINKLERS IN ALL OTHER AREAS WITH CEILING.
 3. ALL SPRINKLERS WITHIN CONTRACT LIMITS SHALL BE QUICK RESPONSE TYPE. REPLACE EXISTING STANDARD RESPONSE SPRINKLERS WITHIN CONTRACT LIMITS WITH NEW QUICK RESPONSE TYPE SPRINKLERS. DO NOT MIX STANDARD RESPONSE AND QUICK RESPONSE SPRINKLERS WITHIN THE SAME COMPARTMENT.
 4. STRUCTURAL DRAWINGS INDICATE AN OVERALL SEISMIC DESIGN CATEGORY "C". PROVIDE SEISMIC BRACING OF SPRINKLER PIPING IN ACCORDANCE WITH NFPA 13 REQUIREMENTS.
 5. SPRINKLERS IN FINISHED GYPSUM BOARD CEILINGS SHALL BE SYMMETRICALLY ALIGNED WITH LIGHTS AND OTHER CEILING FEATURES.
 6. SPRINKLERS IN GRIDDED ACOUSTICAL CEILINGS SHALL BE CENTERED BOTH WAYS IN CEILING TILES.
 7. FURNISH NEW PIPE/FITTINGS AS NEEDED FOR COMPLETE SYSTEM COVERAGE IN ALL AREAS.
 8. FIRE STOP AND SEAL ALL PENETRATIONS IN WALLS IN ACCORDANCE WITH SPECIFICATION SECTION FIRE STOP NOTES THIS SHEET.
 9. CONTRACTOR SHALL MAKE ARRANGEMENTS AND ADD TEMPORARY VALVES AS NEEDED TO MINIMIZE THE TIME SPRINKLERS OUTSIDE THE RENOVATION AREAS ARE SHUT DOWN.
 10. DO NOT INSTALL PIPING DIRECTLY OVER PANELS OR TRANSFORMERS IN ELECTRICAL OR SWITCHGEAR ROOMS.
 11. FILE STORAGE AREAS WITH MOBILE SHELVING OR "SPACE SAVER" RACKS LESS THAN 18" BENEATH SPRINKLER DEFLECTORS PROVIDE .20 GPM PER SQ. FT. FOR THE ENTIRE AREA UP TO 1500 SQ. FT. AREA OF SPRINKLER OPERATION. ARRANGE SPRINKLERS TO PROVIDE COVERAGE OVER AISLEWAYS WHEREVER IT IS POSSIBLE FOR AISLEWAYS TO EXIST. PROVIDE 6" DEEP X 9" WIDE 18 GAUGE METAL Baffles BETWEEN SPRINKLERS LESS THAN 6'-0" APART.
 12. ALL MATERIALS, WORKMANSHIP AND TESTING SHALL MEET THE REQUIREMENTS OF APPLICABLE STATE/LOCAL CODES AND THE REQUIREMENTS OF NFPA 13.
 13. REFER TO ARCHITECTURAL AND MEP DRAWINGS FOR DETAILS REGARDING PHASING, CEILING, LIGHTING, AND EQUIPMENT LAYOUTS WITHIN PROJECT LIMITS.

CONSTRUCTION DOCUMENTS - 100% FINALS FULLY SPRINKLERED

		CONSULTING ENGINEERS:				ARCHITECT:		PROJECT MANAGEMENT:		Drawing Title		Project Title		Project Number		Office of Construction and Facilities Management	
		<div><div>LBVD, Inc. Civil and Structural Engineers 716 South 30th Street Birmingham, AL 35223 Main (205) 251-4500 Fax (205) 324-4181</div></div>		<div><div>SSOE, Inc. 3504 7th Avenue South Birmingham, AL 35222 T 205-925-2375 Project # 012-01051.00</div></div>		<div><div>CMH Architects, Inc. 1800 International Park Drive, Suite 300 Birmingham, AL 35243 (205) 969-2696 – TEL (205) 969-3930 – FAX www.cmharch.com Copyright © 2011 CMH Architects, Inc.</div></div>		<div><div>WALKER AND MOORE 1100 Laurel Lane Montgomery, Alabama 36106 Telephone: 334.380.4399 Facsimile: 334.264.5555</div></div>		DEDUCTIVE ALTERNATE THIRD FLOOR PLAN		A/E AMBULATORY SURGERY IMPROVEMENTS		521-328			
										Approved Project Director James Zellander		Location VAMC – Birmingham, Alabama		Drawing Number FP301B Dwg. 100 of 124			
Revisions		Date								Checked RWS		Drawn DLB					