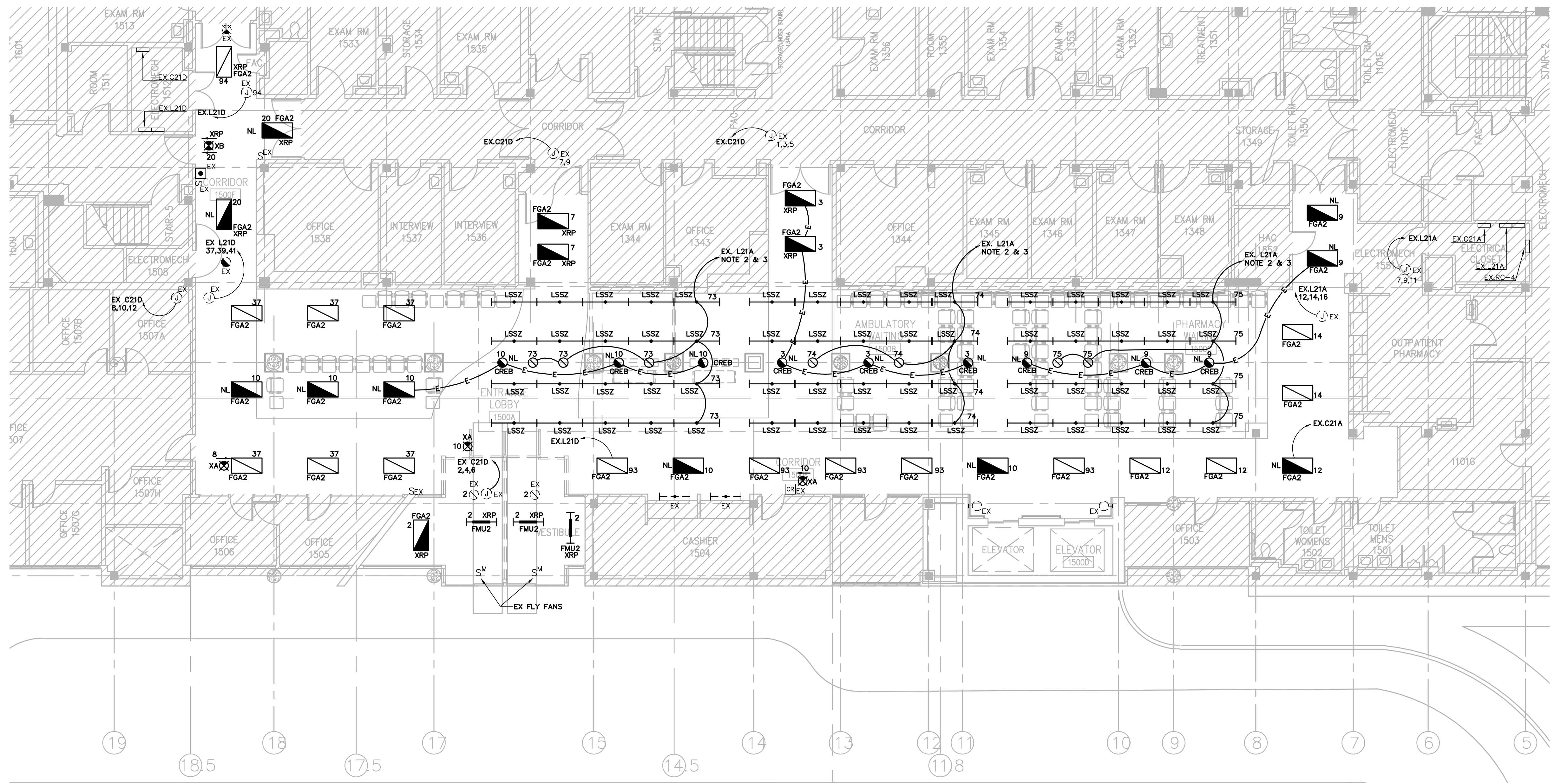


one eighth inch = one foot
one quarter inch = one foot
one half inch = one foot
three eighths inch = one foot
three quarters inch = one foot
one inch = one foot
one and one half inches = one foot
two inches = one foot
three inches = one foot







PLOT DATE: 5/19/2014 2:20 PM
T:\10\10129 Drawings-BHM\10129.01.dwg



FIRST FLOOR PLAN
LIGHTING
SCALE: 1/8" = 1'-0"

- NOTES:
- UNLESS OTHERWISE NOTED (OR SHOWN), CONNECT NEW LUMINAIRE TO EXISTING 120V. CIRCUIT/CONTROL.
 - INSTALL NEW 20/1 CIRCUIT BREAKERS IN PROVISIONS (#73, 74, AND 75) OF EXISTING PANEL L21A.
 - INSTALL NEW LOW VOLTAGE MOMENTARY CONTACT SWITCHES IN EX. LOW VOLTAGE RELAY CABINET RG-4, FOR CIRCUITS #73-75.

CONSTRUCTION DOCUMENTS - 100% FINALS FULLY SPRINKLERED

		CONSULTING ENGINEERS:		 5-20-14		ARCHITECT:  CMH Architects, Inc. 1800 International Park Drive, Suite 300 Birmingham, AL 35243 (205) 969-2696 – TEL (205) 969-3930 – FAX www.cmharch.com Copyright © 2011 CMH Architects, Inc.		PROJECT MANAGEMENT:  WALKER AND MOORE 1100 Laurel Lane Montgomery, Alabama 36106 Telephone: 334.380.4599 Facsimile: 334.264.4585		Drawing Title FIRST FLOOR PLAN LIGHTING		Project Title A/E AMBULATORY SURGERY IMPROVEMENTS		Project Number 521-328		Office of Construction and Facilities Management  Department of Veterans Affairs			
		 LBVD, Inc. Civil and Structural Engineers 716 South 30th Street Birmingham, AL 35233 Main (205) 251-4500 Fax (205) 324-4181		 SSOE, Inc. 3504 7th Avenue South Birmingham, AL 35222 1-205-333-2373 Project # 012-01051.00				Approved Project Director James Zellander		Location VAMC - Birmingham, Alabama		Building Number 0000000000		Drawing Number E101 Dwg. 108 of 124					
Revisions		Date										Date 5/23/2014		Checked JDH		Drawn DJH			