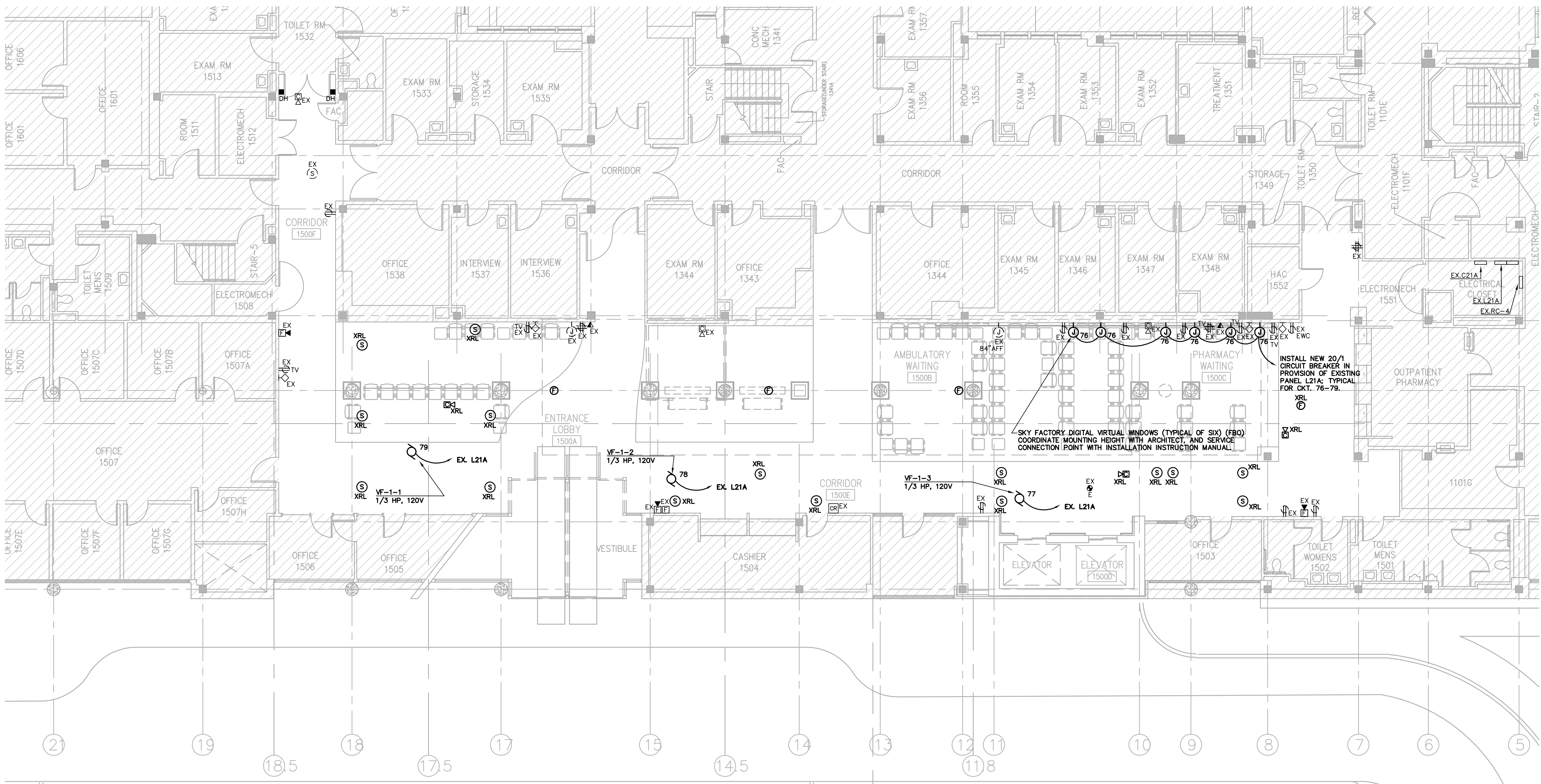


one eighth inch = one foot  
one quarter inch = one foot  
one half inch = one foot  
three eighths inch = one foot  
three quarters inch = one foot  
one inch = one foot  
one and one half inches = one foot  
two inches = one foot  
three inches = one foot

T:\10\10129 Drawings-BM\10129P01.dwg  
PLOT DATE: 5/19/2014 2:32 PM



NOTES:  
1. NEW VOICE / DATA CABLES TERMINATE IN EXISTING ELECTROMECH 1304.

FIRST FLOOR PLAN  
ELECTRICAL  
0 2 4 6 8 16  
SCALE: 1/8" = 1'-0"

CONSTRUCTION DOCUMENTS - 100% FINALS FULLY SPRINKLERED

<b>CONSULTING ENGINEERS:</b>		<b>ARCHITECT:</b>		<b>PROJECT MANAGEMENT:</b>		<b>Drawing Title</b> FIRST FLOOR PLAN POWER & AUXILIARY		<b>Project Title</b> A/E AMBULATORY SURGERY IMPROVEMENTS		<b>Office of Construction and Facilities Management</b>	
 LBYD, Inc. Civil and Structural Engineers 716 South 30th Street Birmingham, AL 35223 Main (205) 251-4500 Fax (205) 324-4181		 SSOE, Inc. 3504 7th Avenue South Birmingham, AL 35222 T 205-333-5973 Project # 012-01051.00		 CMH Architects, Inc. 1800 International Park Drive, Suite 300 Birmingham, AL 35243 (205) 969-2696 - TEL (205) 969-3930 - FAX www.cmharch.com Copyright © 2011 CMH Architects, Inc.		 WALKER AND MOORE INTERIOR DESIGN PROJECT MANAGEMENT 1100 Laurel Lane Montgomery, Alabama 36106 Telephone: 334.380.4599 Facsimile: 334.264.5585		<b>Approved Project Director</b> James Zellander		<b>Location</b> VAMC - Birmingham, Alabama	
<b>Revisions</b>		<b>Date</b>		<b>Date</b> 5/23/2014		<b>Checked</b> JDH		<b>Drawn</b> DJH		<b>Project Number</b> 521-328	
										<b>Building Number</b> 0000000000	
										<b>Drawing Number</b> E201	
										<b>Dwg. 115 of 124</b>	