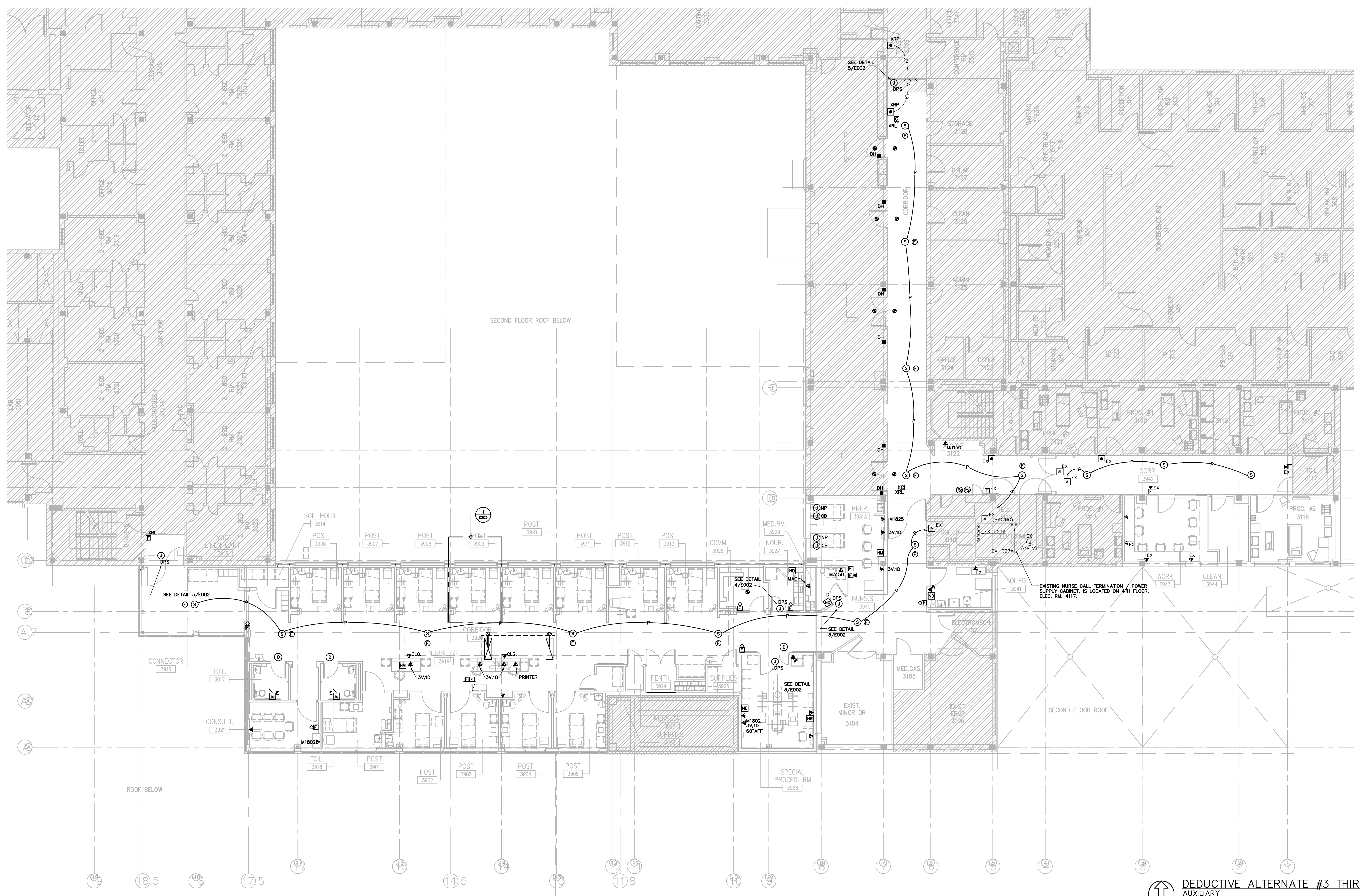


one eighth inch = one foot  
one quarter inch = one foot  
one half inch = one foot  
three eighths inch = one foot  
three quarters inch = one foot  
one inch = one foot  
one and one half inches = one foot  
two inches = one foot  
three inches = one foot

PLOT DATE: 5/19/2014 11:44 AM  
T:\10\10129 Drawings-BHM\10129A03-DA.dwg



DEDUCTIVE ALTERNATE #3 THIRD FLOOR PLAN  
AUXILIARY  
SCALE: 1/8" = 1'-0"

CONSTRUCTION DOCUMENTS - 100% FINALS FULLY SPRINKLERED

<b>CONSULTING ENGINEERS:</b>  LBVD, Inc. Civil and Structural Engineers 716 South 30th Street Birmingham, AL 35223 Main (205) 251-4500 Fax (205) 324-4181 © copyright 2012		<b>SSOE, Inc.</b> 3504 7th Avenue South Birmingham, AL 35222 1-205-333-5273 Project # 012-01051.00				<b>ARCHITECT:</b>  CMH Architects, Inc. 1800 International Park Drive, Suite 300 Birmingham, AL 35243 (205) 969-2696 - TEL (205) 969-3930 - FAX www.cmharch.com Copyright © 2011 CMH Architects, Inc.		<b>PROJECT MANAGEMENT:</b>  WALKER AND MOORE 1100 Laurel Lane Montgomery, Alabama 36106 Telephone: 334.380.4599 Facsimile: 334.264.5585		<b>Drawing Title</b> <b>DEDUCTIVE ALTERNATE THIRD FLOOR PLAN</b> <b>Approved Project Director</b> James Zellander		<b>Project Title</b> A/E AMBULATORY SURGERY IMPROVEMENTS <b>Location</b> VAMC - Birmingham, Alabama <b>Date</b> 5/23/2014 <b>Checked</b> JDH <b>Drawn</b> DAG		<b>Project Number</b> 521-328 <b>Bidding Number</b> 0000000000 <b>Drawing Number</b> E303A Dwg. 124 of 124 	
--	--	--	--	--	--	---	--	---	--	--	--	--	--	--	--