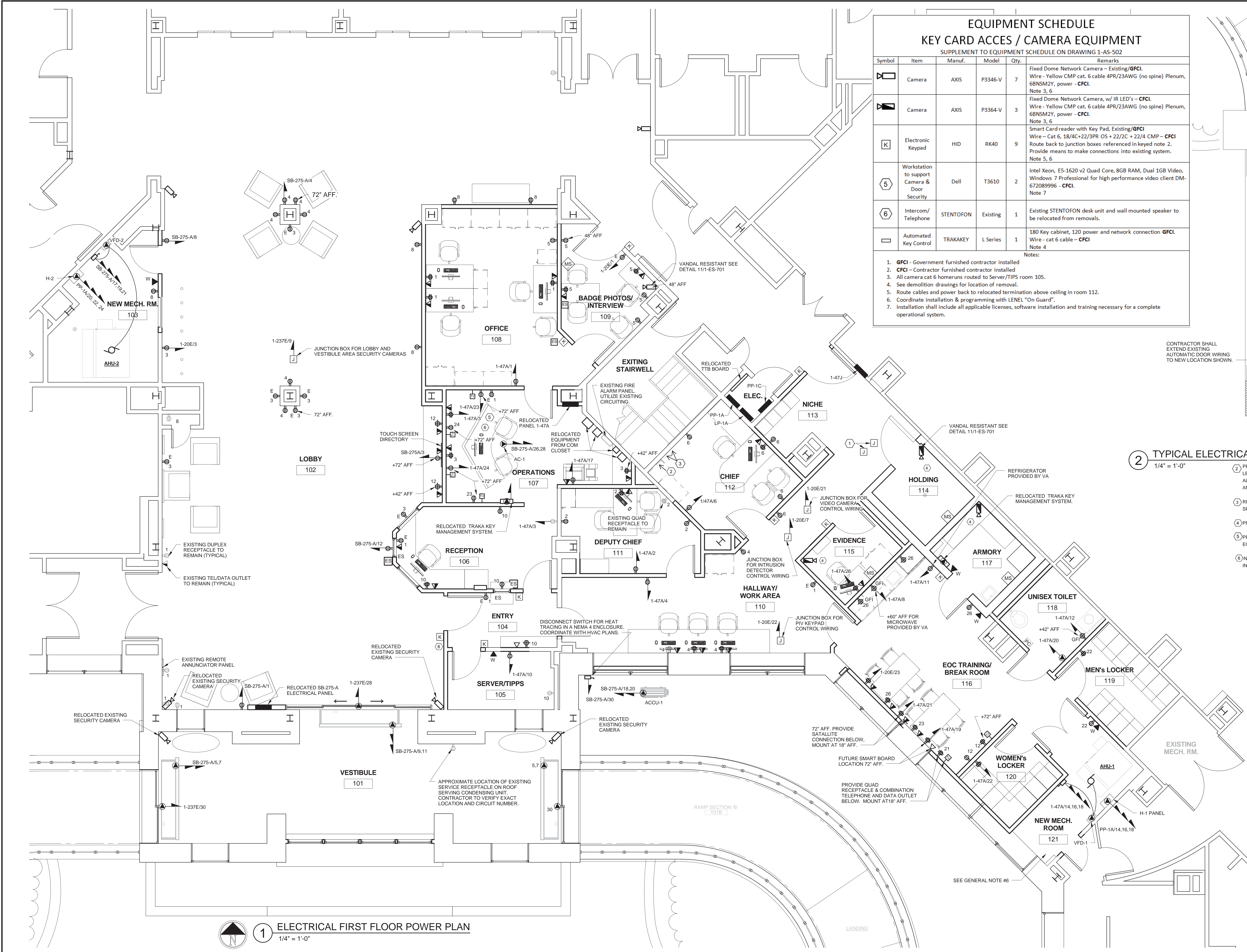



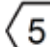
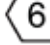



one eighth inch = one foot  
one quarter inch = one foot  
one half inch = one foot  
three quarters inch = one foot  
one inch = one foot  
one and one half inches = one foot  
two inches = one foot  
three inches = one foot  
four inches = one foot  
five inches = one foot  
six inches = one foot  
seven inches = one foot  
eight inches = one foot  
nine inches = one foot  
ten inches = one foot  
eleven inches = one foot  
twelve inches = one foot  
thirteen inches = one foot  
fourteen inches = one foot  
fifteen inches = one foot  
sixteen inches = one foot  
seventeen inches = one foot  
eighteen inches = one foot  
nineteen inches = one foot  
twenty inches = one foot  
twenty one inches = one foot  
twenty two inches = one foot  
twenty three inches = one foot  
twenty four inches = one foot  
twenty five inches = one foot  
twenty six inches = one foot  
twenty seven inches = one foot  
twenty eight inches = one foot  
twenty nine inches = one foot  
thirty inches = one foot  
thirty one inches = one foot  
thirty two inches = one foot  
thirty three inches = one foot  
thirty four inches = one foot  
thirty five inches = one foot  
thirty six inches = one foot  
thirty seven inches = one foot  
thirty eight inches = one foot  
thirty nine inches = one foot  
forty inches = one foot  
forty one inches = one foot  
forty two inches = one foot  
forty three inches = one foot  
forty four inches = one foot  
forty five inches = one foot  
forty six inches = one foot  
forty seven inches = one foot  
forty eight inches = one foot  
forty nine inches = one foot  
fifty inches = one foot  
fifty one inches = one foot  
fifty two inches = one foot  
fifty three inches = one foot  
fifty four inches = one foot  
fifty five inches = one foot  
fifty six inches = one foot  
fifty seven inches = one foot  
fifty eight inches = one foot  
fifty nine inches = one foot  
sixty inches = one foot  
sixty one inches = one foot  
sixty two inches = one foot  
sixty three inches = one foot  
sixty four inches = one foot  
sixty five inches = one foot  
sixty six inches = one foot  
sixty seven inches = one foot  
sixty eight inches = one foot  
sixty nine inches = one foot  
seventy inches = one foot  
seventy one inches = one foot  
seventy two inches = one foot  
seventy three inches = one foot  
seventy four inches = one foot  
seventy five inches = one foot  
seventy six inches = one foot  
seventy seven inches = one foot  
seventy eight inches = one foot  
seventy nine inches = one foot  
eighty inches = one foot  
eighty one inches = one foot  
eighty two inches = one foot  
eighty three inches = one foot  
eighty four inches = one foot  
eighty five inches = one foot  
eighty six inches = one foot  
eighty seven inches = one foot  
eighty eight inches = one foot  
eighty nine inches = one foot  
ninety inches = one foot  
ninety one inches = one foot  
ninety two inches = one foot  
ninety three inches = one foot  
ninety four inches = one foot  
ninety five inches = one foot  
ninety six inches = one foot  
ninety seven inches = one foot  
ninety eight inches = one foot  
ninety nine inches = one foot  
one hundred inches = one foot



EQUIPMENT SCHEDULE					Remarks
KEY CARD ACCES / CAMERA EQUIPMENT					
Symbol	Item	Manuf.	Model	Qty.	
	Camera	AXIS	P3346-V	7	Fixed Dome Network Camera - Existing/ <b>GFCI</b> . Wire - Yellow CMP cat. 6 cable 4PR/23AWG (no spine) Plenum, 68NSM2Y, power - <b>CFCI</b> . Note 3, 6
	Camera	AXIS	P3364-V	3	Fixed Dome Network Camera, w/ IR LED's - <b>CFCI</b> . Wire - Yellow CMP cat. 6 cable 4PR/23AWG (no spine) Plenum, 68NSM2Y, power - <b>CFCI</b> . Note 3, 6
	Electronic Keypad	HID	RK40	9	Smart Card reader with Key Pad, Existing/ <b>GFCI</b> Wire - Cat 6, 18/4C+22/3PR OS + 22/2C + 22/4 CMP - <b>CFCI</b> Route back to junction boxes referenced in keyed note 2. Provide means to make connections into existing system. Note 5, 6
	Workstation to support Camera & Door Security	Dell	T3610	2	Intel Xeon, E5-1620 v2 Quad Core, 8GB RAM, Dual 1GB Video, Windows 7 Professional for high performance video client DM-672089996 - <b>CFCI</b> . Note 7
	Intercom/ Telephone	STENTOFON	Existing	1	Existing STENTOFON desk unit and wall mounted speaker to be relocated from removals.
	Automated Key Control	TRAKKEY	L Series	1	180 Key cabinet, 120 power and network connection <b>GFCI</b> . Wire - cat 6 cable - <b>CFCI</b> Note 4
Notes:					
1. <b>GFCI</b> - Government furnished contractor installed					
2. <b>CFCI</b> - Contractor furnished contractor installed					
3. All camera cat 6 homeruns routed to Server/TIPPS room 105.					
4. See demolition drawings for location of removal.					
5. Route cables and power back to relocated termination above ceiling in room 112.					
6. Coordinate installation & programming with LENE "On Guard".					
7. Installation shall include all applicable licenses, software installation and training necessary for a complete operational system.					

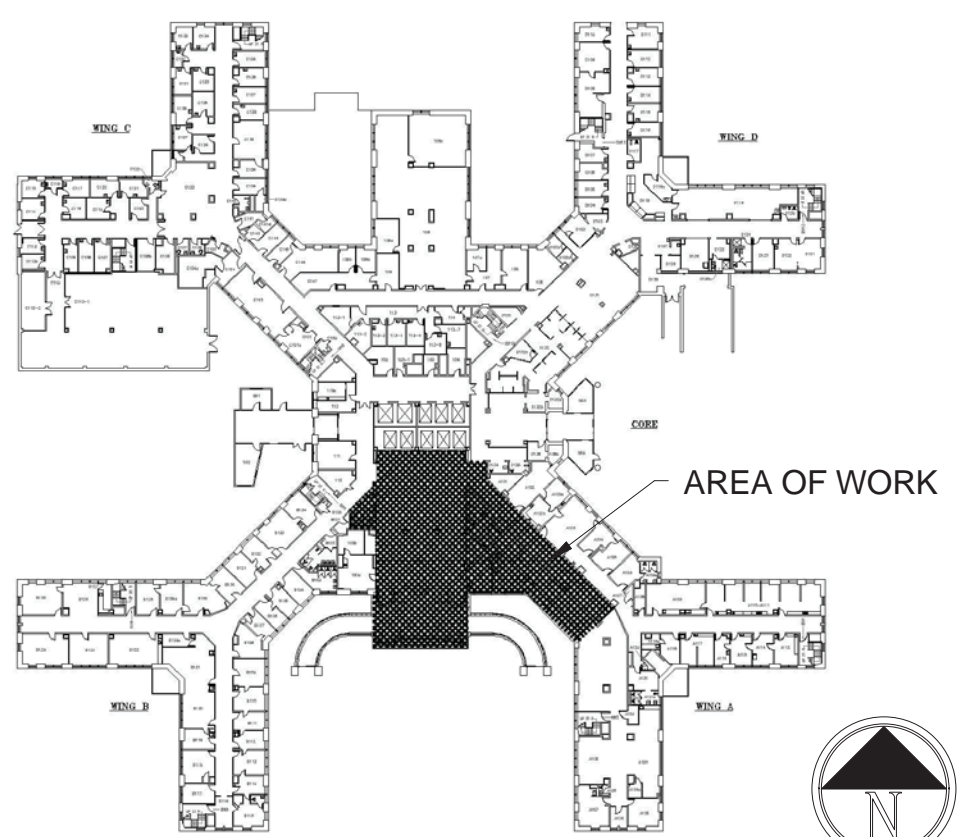
2 TYPICAL ELECTRICAL POWER RAMP EXTENSION - DEDUCT ALT. A & B  
1/4" = 1'-0"

- 2 PROVIDE AND INSTALL ON WALL ABOVE CEILING ONE (1) NEW WALL MOUNTED JUNCTION BOX BY LENEL 24"W x 18"H x 4.5" D TO HOUSE THREE (3) 1320 BOARDS AND ONE (1) 3000 SERIES COMM. BOARD. ALL BOARDS SHALL BE GFCI. GC SHALL BE RESPONSIBLE FOR COMPLETE SYSTEM INSTALLATION AND OPERATION.
- 3 RELOCATE EXISTING JUNCTION BOXES PROVIDING POWER TO MAGNETIC DOOR LOCKS ON WALL SPACE ABOVE CEILING. COORDINATE ALL WORK WITH COR AND VA POLICE.
- 4 PROVIDE AND INSTALL MOTION SENSOR TO CONTROL CAMERA OPERATION.
- 5 PROVIDE TWO WORKSTATIONS TO SUPPORT CAMERA AND DOOR SECURITY, REFER TO EXTENDED EQUIPMENT SCHEDULE.
- 6 INSTALL STENTOFON DESK UNIT AT OPERATIONS TO WALL MOUNTED SPEAKER AT ENTRANCE DOOR INTO ENTRY.

Keynote Legend	
Key Value	Keynote Text
1	CONTRACTOR TO PROVIDE JUNCTION BOX FOR FUTURE CONNECTION TO PANEL 1-ADLS DURING PHASE 4 CONSTRUCTION.

- NOTES:
1. ELECTRICAL CONTRACTOR SHALL PROVIDE & INSTALL ALL LINE VOLTAGE CONDUCTORS IN CONDUIT AND MAKE ALL CONNECTIONS REQUIRED FOR VAV BOXES. COORDINATE EXACT LOCATIONS IN FIELD WITH MECHANICAL CONTRACTOR. ALL LINE VOLTAGE CONDUCTORS & CONDUIT SHALL MATCH BRANCH CIRCUIT SHOWN.
2. EMERGENCY PWER PANEL 1-20-E IS LOCATED IN ROOM A112 ON THE FIRST FLOOR.
3. TELEPHONE EQUIPMENT AT RECEPTION WILL BE MASTER STATION BACK FED FROM B-WING.
4. EXISTING AIPHONE TO BE RELOCATED. COORDINATE EXACT LOCATION WITH VA.
5. CONTRACTOR TO PROVIDE EXTENSION RING TO NEW DEVICES IN NEW WAINSCOT AREAS AS REQUIRED.
6. TIPS CLOSET SERVING RENOVATED AREA IS LOCATED AT FLOOR BELOW UNDER NEW MECHANICAL ROOM 121.

KEY PLAN



		CONSULTANTS:		JOHN D. FELLENER, P.E.		ARCHITECT/ENGINEERS:		Drawing Title ELECTRICAL POWER PLAN		Project Title RENOVATE LOBBY & POLICE SUITE AT STRATTON VA MEDICAL CENTER		Project Number 528A8-13-801		Office of Construction and Facilities Management	
						FELLENER III ENGINEERING LLP 12-278 22 Mulberry St., Suite 2A, Middletown, NY 10940 t 845-343-1481 f 845-320-8735 t 845-454-9704 f 855-320-8735 UNAUTHORIZED ALTERATION OR ADDITION TO A PLAN BEARING A LICENSED PROFESSIONAL ENGINEER'S SEAL IS A VIOLATION OF STATE EDUCATION LAW		Liscum McCormack VanVoorhis LLP  181 Church Street Poughkeepsie, New York 12601 PHONE 845-452-2268 FAX 845-452-3752 ARCHITECTURE PLANNING INTERIORS		Approved: Project Director 		Location V.A.M.C. ALBANY, NY			
VA01		ADDED EQUIP. SCHED. & KEYED NOTES 2.3.4.5.6				MAY 22, 2014						Date 4/4/14		Checked JDF	
REV #		REVISION DESCRIPTION		DATE											