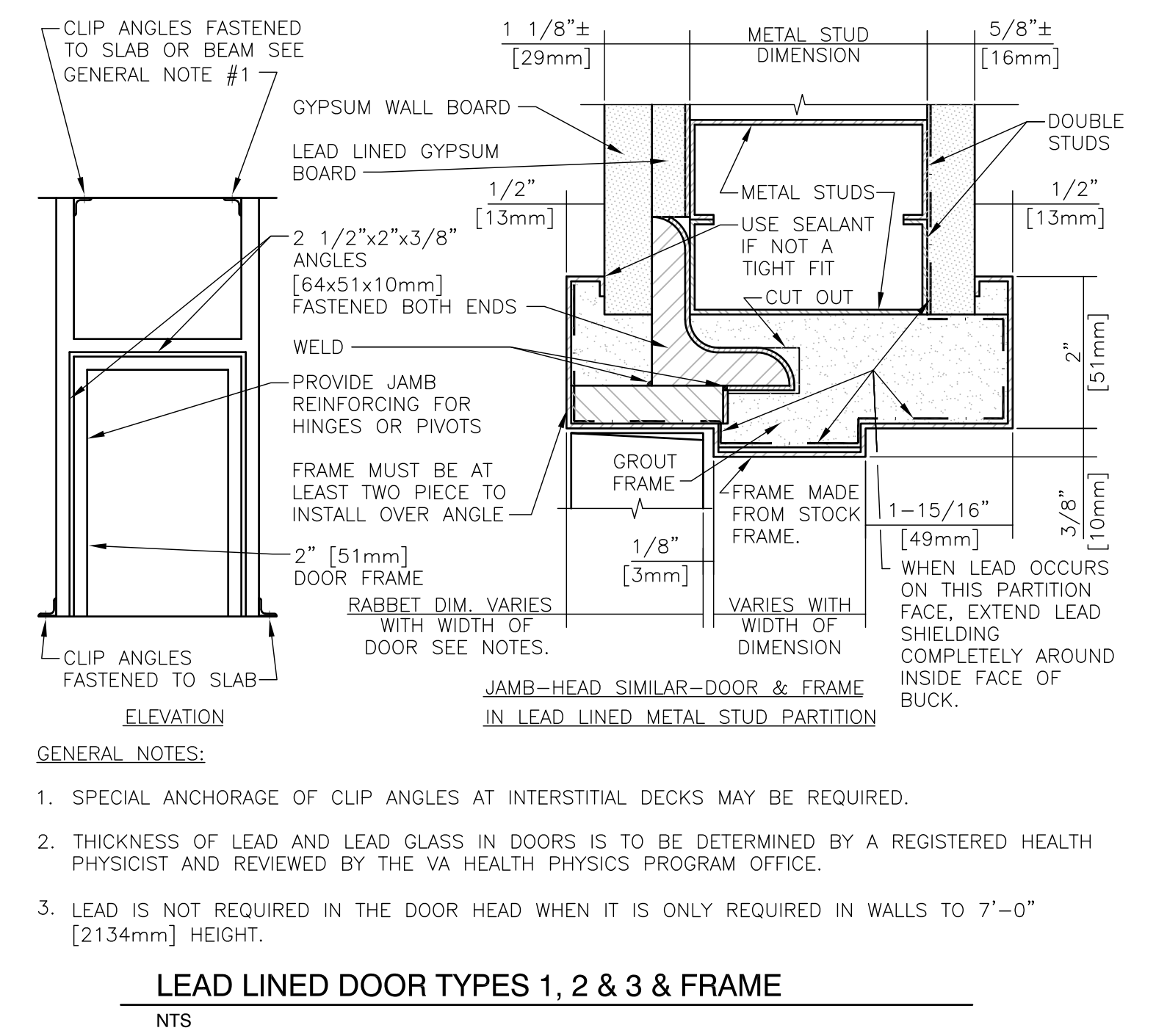
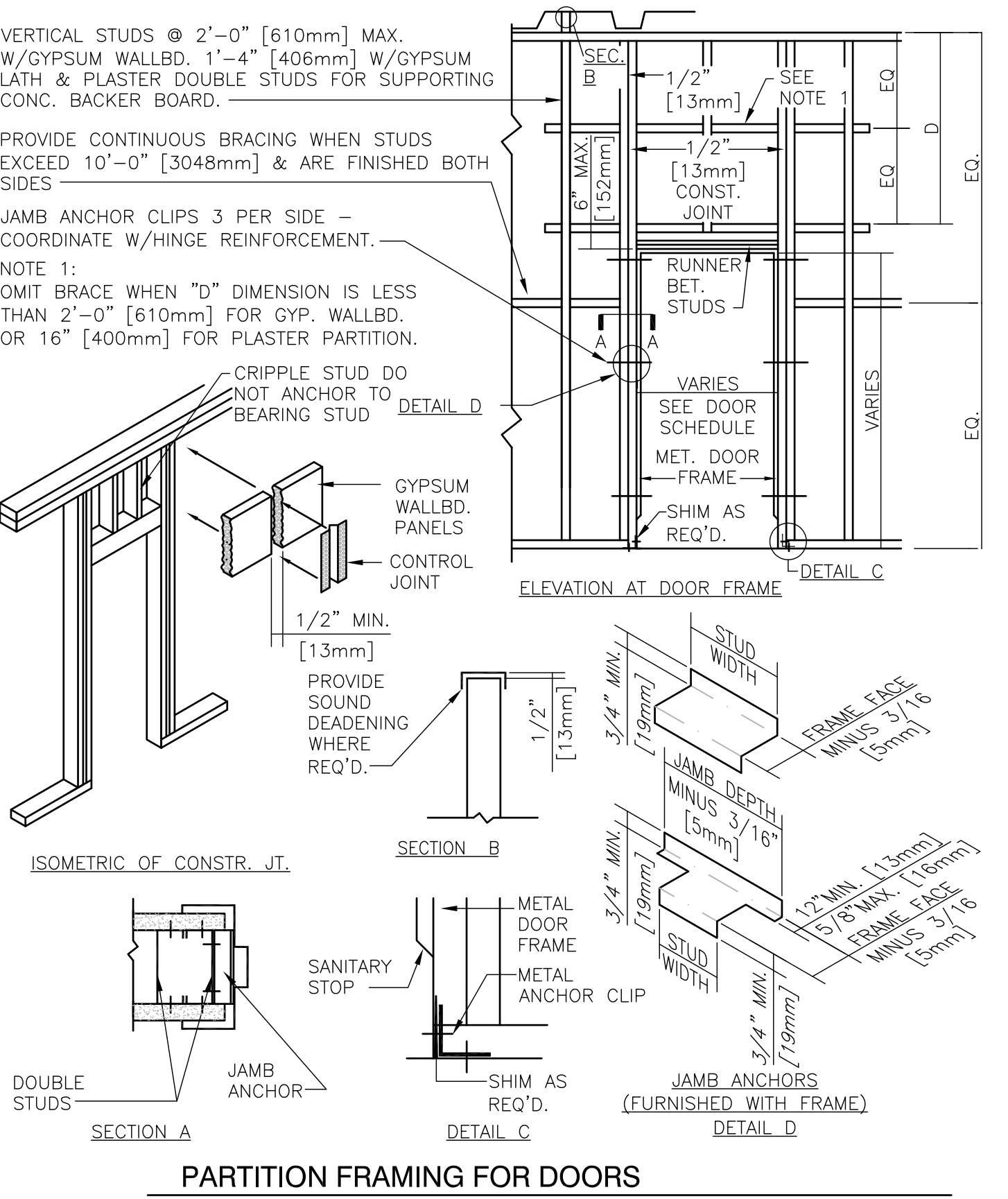



- IMAGING EQUIPMENT NOTES:**
- ALL X-RAY EQUIPMENT AND CEILING MOUNTED UTILITY COLUMNS ARE VA FURNISHED, VA INSTALLED. MANUFACTURERS DRAWINGS ARE INCLUDED IN THIS SET FOR REFERENCE PURPOSES.
 - CONTRACTOR SHALL VERIFY WITH THE EQUIPMENT MANUFACTURER'S FINAL INSTALLATION DRAWINGS THE LOCATION AND TRAVEL OF ALL ANCILLARY EQUIPMENT TO BE FLOOR, CEILING OR WALL MOUNTED, AND COORDINATE LOCATIONS WITH SPRINKLER HEADS, SMOKE DETECTORS, ELECTRICAL OUTLETS, HAVC GRILLS & DIFFUSERS, GENERAL ROOM LIGHTS, SPEAKERS, CAMERAS & ANY OTHER DEVICES.
 - CONTRACTOR SHALL BE RESPONSIBLE FOR ALL FINAL PAINT TOUCH-UP, COSMETIC TRIM WORK NEEDED OR REQUIRED AFTER INSTALLATION OF ALL EQUIPMENT & ASSOCIATED SUPPORT APPARATUS.
 - SEE WALL ELEVATIONS FOR MISC. CONTRACTOR FURNISHED EQUIPMENT.



FINAL SUBMITTAL
APPROVED FOR CONSTRUCTION

		CONSULTANTS:		ARCHITECT-OF-RECORD THOMAS H. GYLLSTROM FL. REG. NO. 9098	ARCHITECT/ENGINEERS: <div>AKEA INC. 3603 NW 98th Street, Suite B Gainesville, FL 32606 Phone: (352) 474-6124 Fax: (352) 474-6324 COA: FL #26693 AKEA Project No. 072-14</div>	Drawing Title EQUIPMENT PLAN, PARTITION TYPES, DOOR TYPES & DETAILS	Project Title NEW SURGICAL 9TH OR SUITE	Project Number 508-14-105	Building Number	Office of Construction and Facilities Management
Revisions:	Date					Approved: Project Director	Location Atlanta, Georgia	Drawing Number A101 4 of 36		 Department of Veterans Affairs
						Date APRIL 30, 2014	Checked THG	Drawn CLN		