

1
2
3
4
5
6
7
8
9

A
B
C
D
E
F

three inches = one foot
6"

one and one half inches = one foot
1 1/2"

one inch = one foot
1"

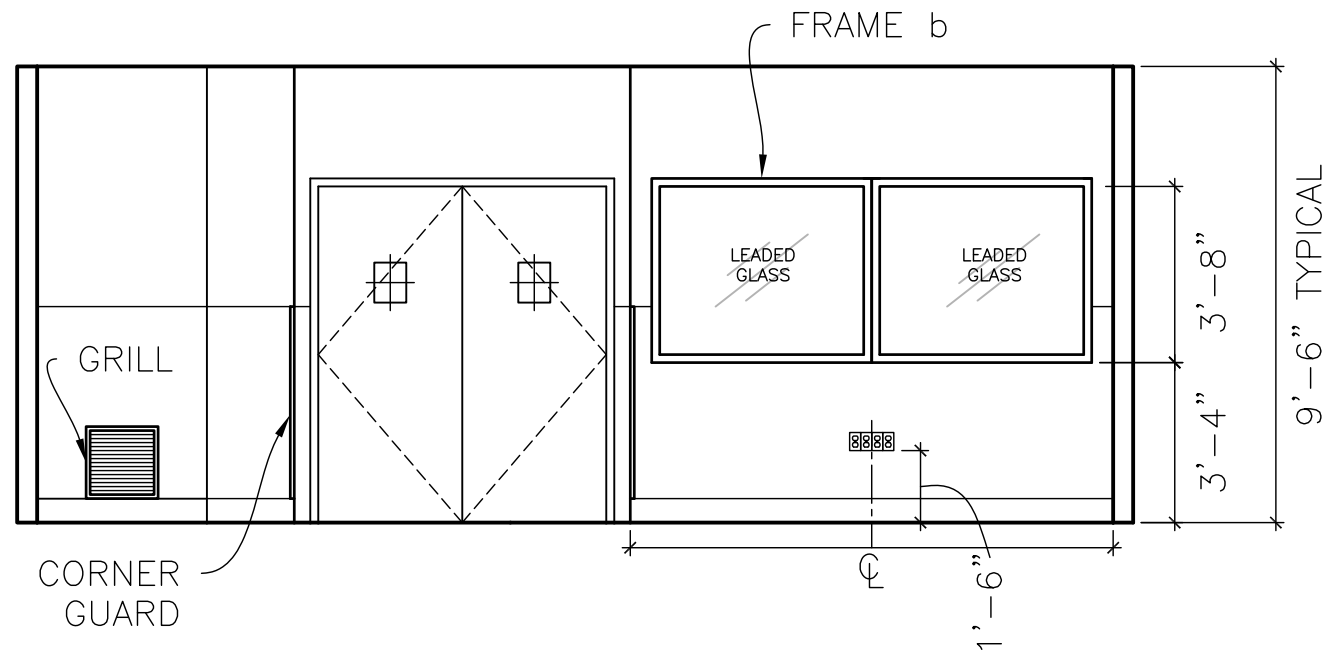
three quarters inch = one foot
3/4"

one half inch = one foot
1/2"

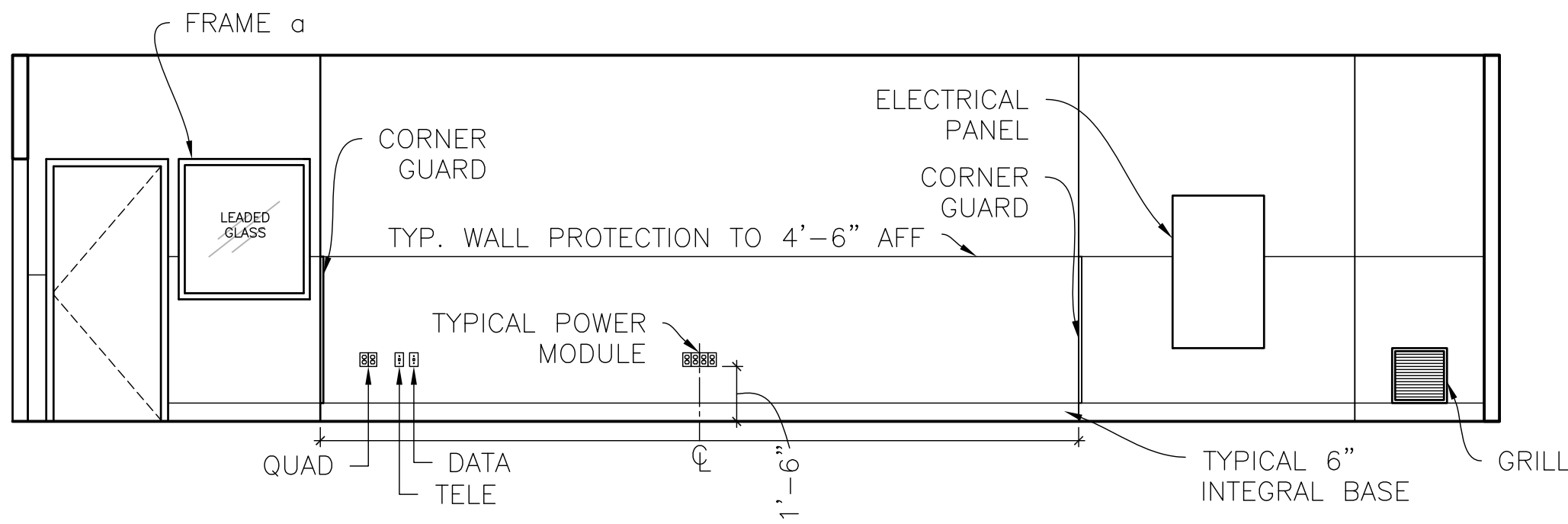
three eighths inch = one foot
3/8"

one quarter inch = one foot
1/4"

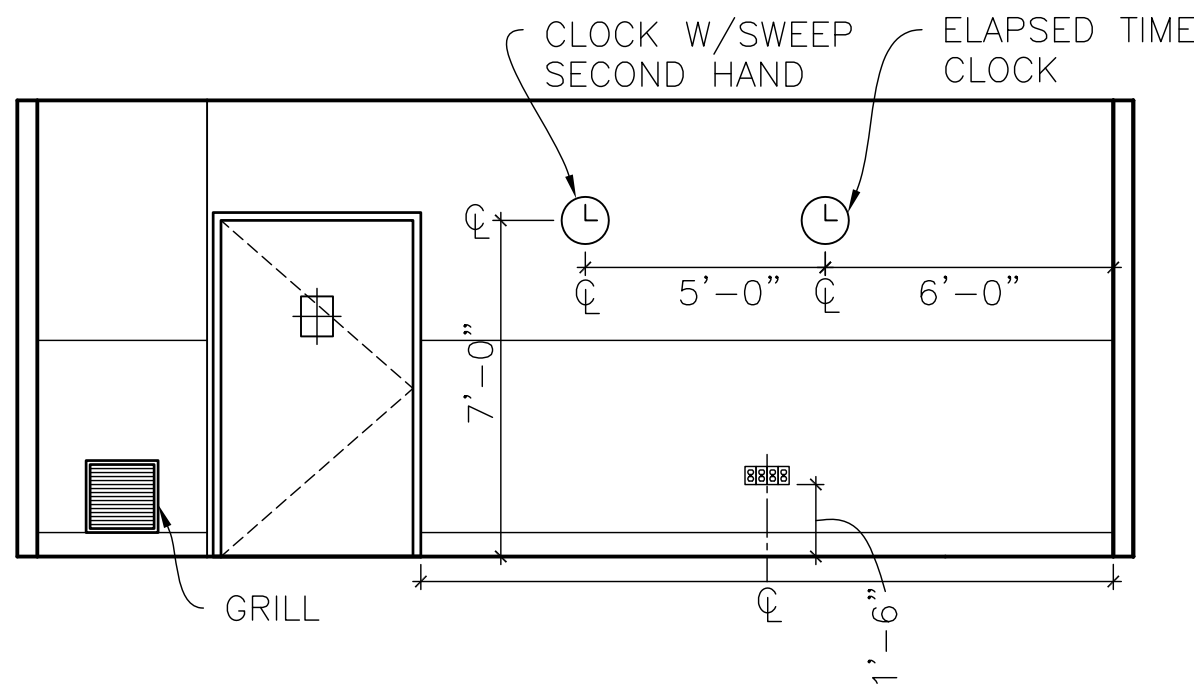
one eighth inch = one foot
1/8"



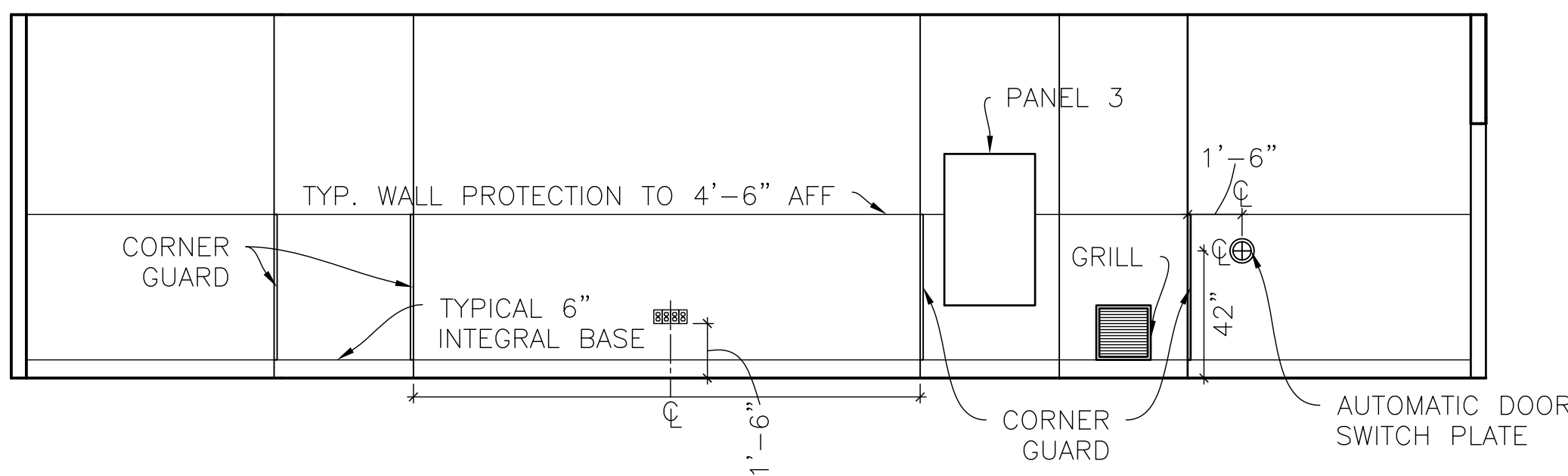
1 ELEVATION - NORTH
1/4" = 1' - 0"



2 ELEVATION - EAST
1/4" = 1' - 0"



3 ELEVATION - SOUTH
1/4" = 1' - 0"



4 ELEVATION - WEST
1/4" = 1' - 0"

FINAL SUBMITTAL
APPROVED FOR CONSTRUCTION

		CONSULTANTS:	ARCHITECT-OF-RECORD THOMAS H. GYLLSTROM FL. REG. NO. 9098	ARCHITECT/ENGINEERS: <div><div>AKEA</div><div>INC.</div><div>3603 NW 98th Street, Suite B Gainesville, FL 32606 Phone: (352) 474-6124 Fax: (352) 474-6324 COA: FL #26693 AKEA Project No. 072-14</div></div>	Drawing Title	Project Title	Project Number 508-14-105	Office of Construction and Facilities Management	
					ELEVATIONS	NEW SURGICAL 9TH OR SUITE	Building Number		
					Approved: Project Director	Location Atlanta, Georgia	Drawing Number A102	<div><div></div>Department of Veterans Affairs</div>	
						Date APRIL 30, 2014	Checked THG		5 of 36
							Drawn CLN		
Revisions:	Date								